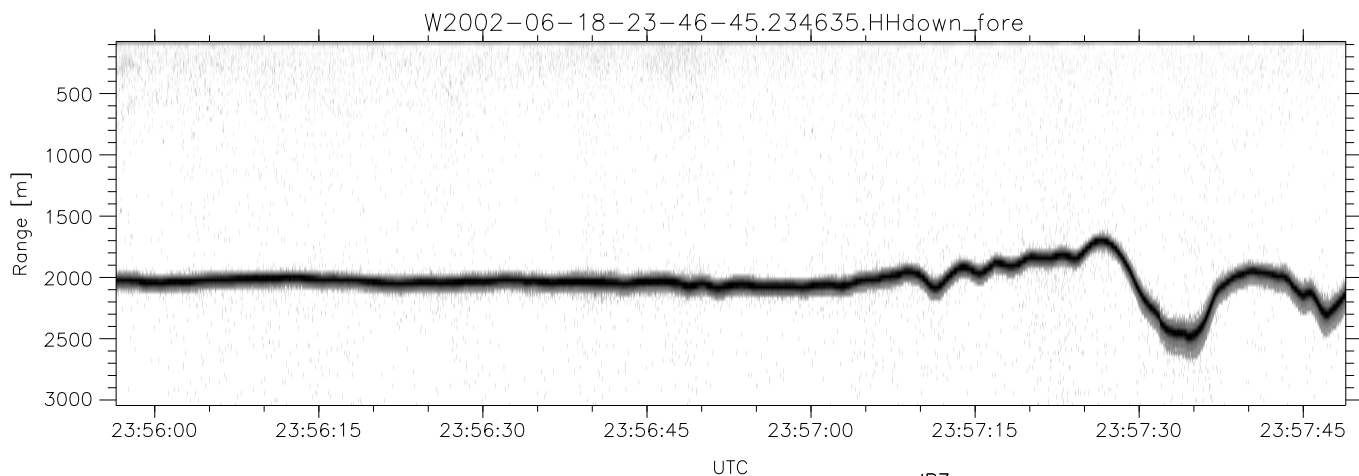
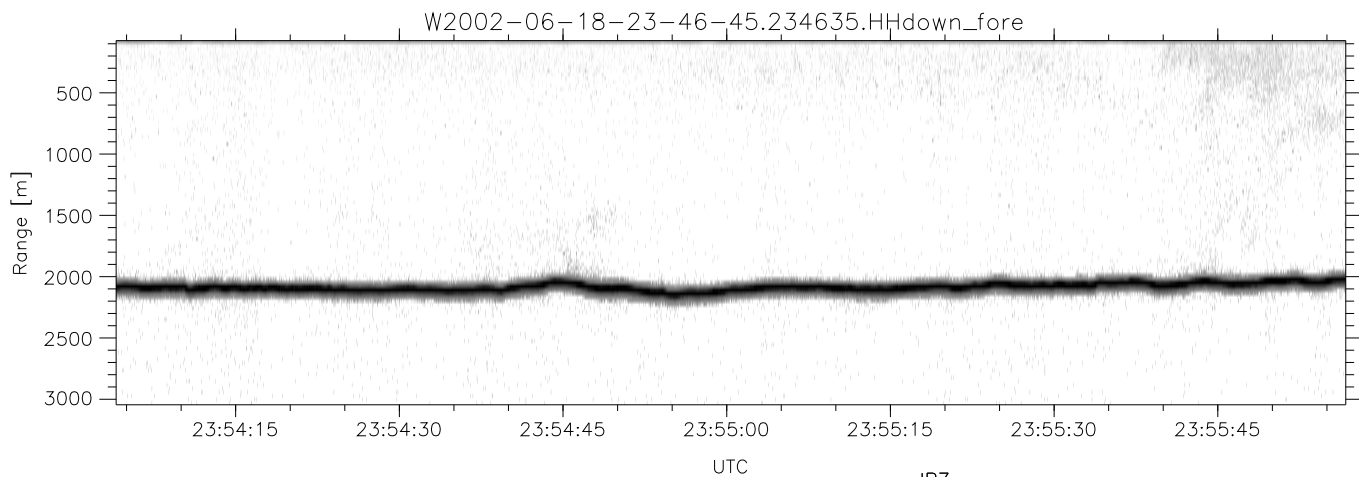
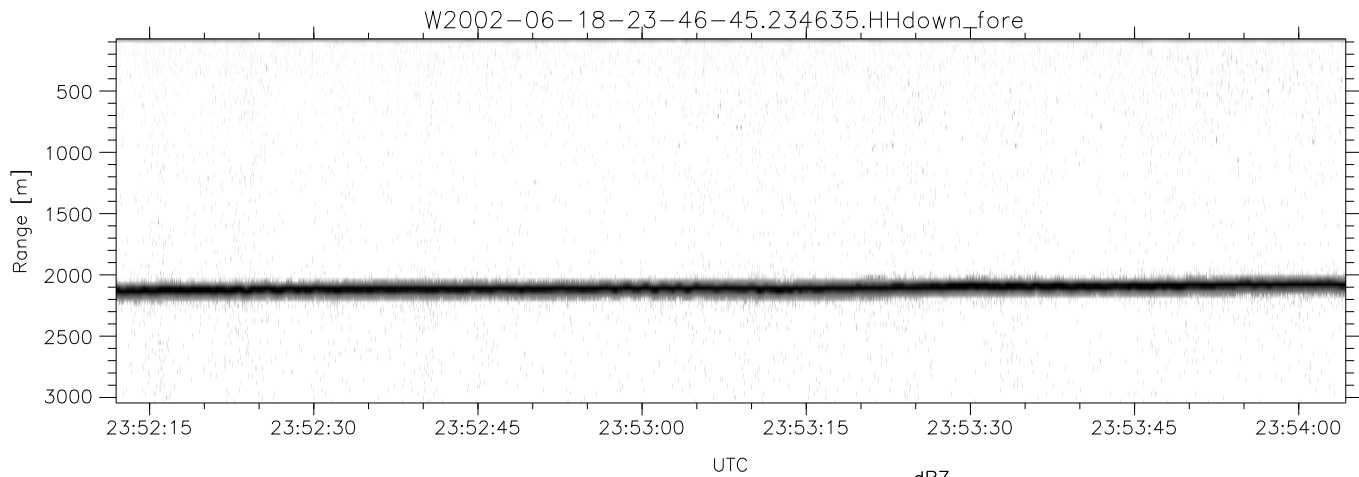


IHOP 2002 (dual-antenna config, modes 1,3,4,7) Data (cal: 55.0,50.0)

W2002-06-18-23-46-45 - PPMAG4
 IRIG:1,UTC: 23:46:35.48 to 00:09:17.17, Dur: 1362s
 TimeLngth: 1361.69s, TimeInt: 28ms (34.8pps)
 TimeCor=-13.0s, DSPDif(mn,min,mx):28,28,323
 PPS(min,max,std): 21,36,2.22
 Prof: 343 to 47757, NumProf(t/r): 47414/34138
 ProcTime/Recs: 23:46:35-00:02:55/0-34137
 MxACQtime: 33ms; DRate: 194.9KB/s; Flags: 0, 0, 0
 Pulse: 275ns, IFfilt: 5.0MHz; ppPol: HH HV VV
 TxPol: HHVV, PRF: 20 10 20 10 kHz
 Range: Delay 75m, Spacing 30m, Gates 100
 Ave. Pulses: 84, Rng/Prof Aspect@90m/s: 11.6

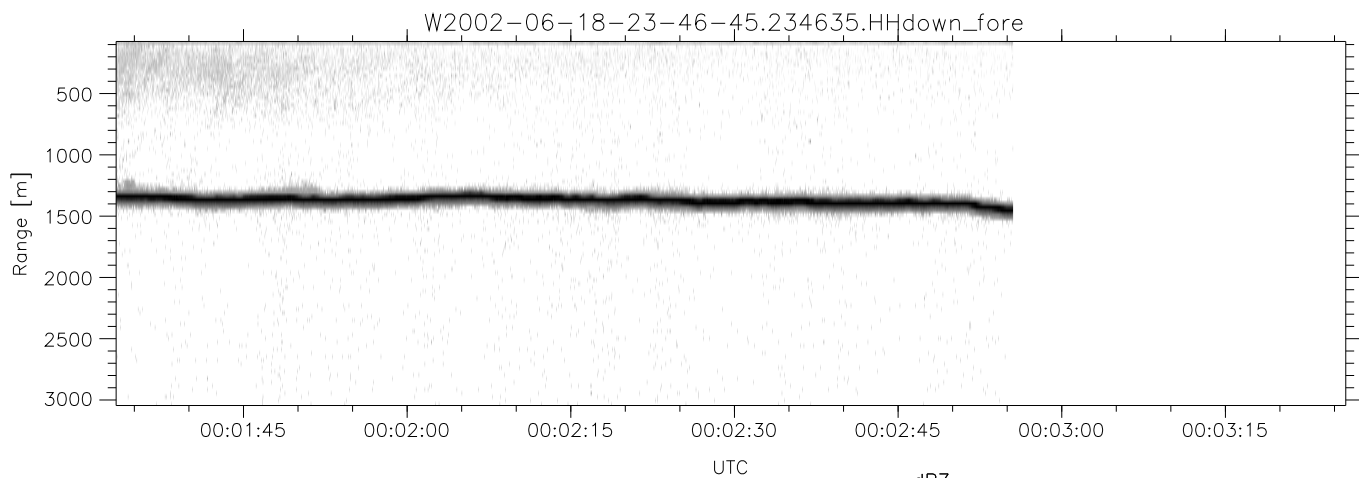
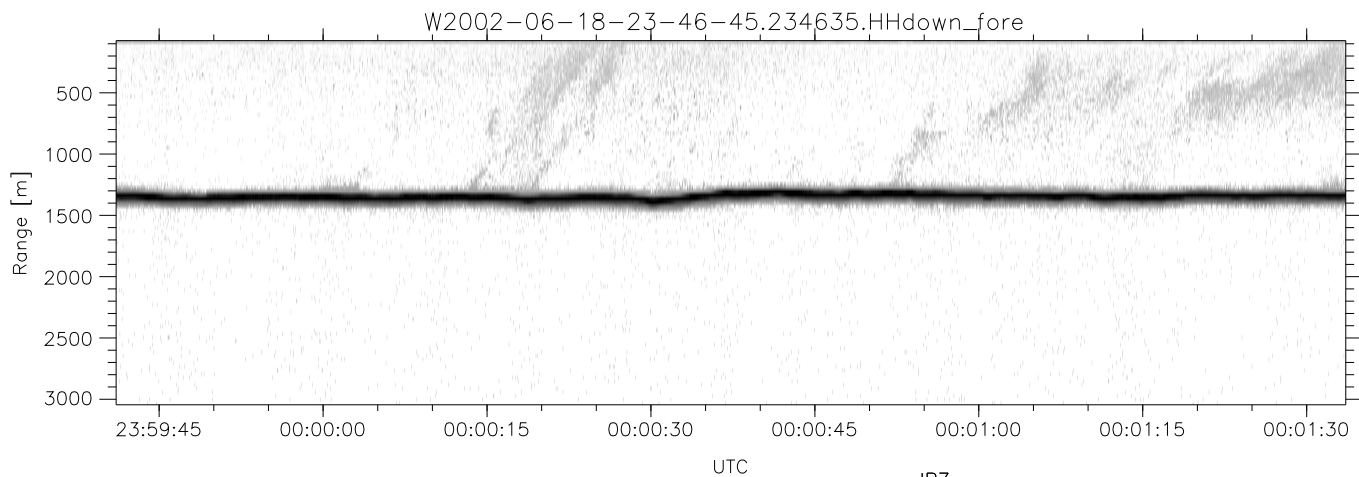
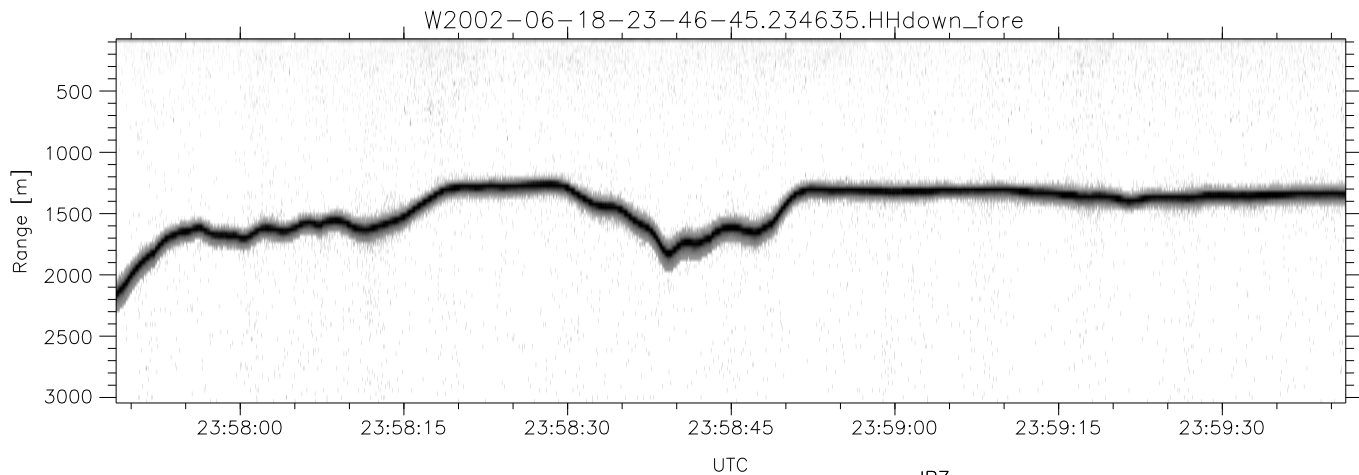
	Min	Max	Mean	Std	Varc%
hhN(dB)	-68.18	-64.60	-66.24	-76.07	10.4
vvN(dB)	-67.32	-63.92	-65.47	-75.40	10.2
hhL(dB)	-15.03	-2.72	-7.41	-10.82	45.6
vvL(dB)	-9.75	1.17	-1.32	-6.92	27.5
ppN(m/s)	-12.63	12.58	-0.04	4.12	
ppT(m/s)	-99.75	99.42	-0.30	32.58	
hh/vv(dB)	-NaN	95.04	48.92	71.27	1717
vh/hh(dB)	-NaN	-28.97	-50.52	-40.95	905.
hv/vv(dB)	-NaN	-34.58	-51.26	-45.51	375.
hnjmp(dB)	-2.19	2.57	0.16	-8.32	14.2
vnjmp(dB)	-2.53	2.82	0.19	-8.31	14.1



IHOP 2002 (dual-antenna config, modes 1,3,4,7) Data (cal: 55.0,50.0)

W2002-06-18-23-46-45 - PPMAG4
 IRIG:1,UTC: 23:46:35.48 to 00:09:17.17, Dur: 1362s
 TimeLngth: 1361.69s, TimeInt: 28ms (34.8pps)
 TimeCor=-13.0s, DSPDif(mn,min,mx):28,28,323
 PPS(min,max,std): 21,36,2.22
 Prof: 343 to 47757, NumProf(t/r): 47414/34138
 ProcTime/Recs: 23:46:35-00:02:55/0-34137
 MxACQtime: 33ms; DRate: 194.9KB/s; Flags: 0, 0, 0
 Pulse: 275ns, IFfilt: 5.0MHz; ppPol: HH HV VV
 TxPol: HHVV, PRF: 20 10 20 10 kHz
 Range: Delay 75m, Spacing 30m, Gates 100
 Ave. Pulses: 84, Rng/Prof Aspect@90m/s: 11.6

	Min	Max	Mean	Std	Varc%
hhN(dB)	-68.18	-64.60	-66.24	-76.07	10.4
vvN(dB)	-67.32	-63.92	-65.47	-75.40	10.2
hhL(dB)	-15.03	-2.72	-7.41	-10.82	45.6
vvL(dB)	-9.75	1.17	-1.32	-6.92	27.5
ppN(m/s)	-12.63	12.58	-0.04	4.12	
ppT(m/s)	-99.75	99.42	-0.30	32.58	
hh/vv(dB)	-NaN	95.04	48.92	71.27	1717
vh/hh(dB)	-NaN	-28.97	-50.52	-40.95	905.
hv/vv(dB)	-NaN	-34.58	-51.26	-45.51	375.
hnjmp(dB)	-2.19	2.57	0.16	-8.32	14.2
vnjmp(dB)	-2.53	2.82	0.19	-8.31	14.1



IHOP 2002 (dual-antenna config, modes 1,3,4,7) Data (cal: 55.0,50.0)

W2002-06-18-23-46-45 - PPMAG4
 IRIG:1,UTC: 23:46:35.48 to 00:09:17.17, Dur: 1362s
 TimeLngth: 1361.69s, TimeInt: 28ms (34.8pps)
 TimeCor=-13.0s, DSPDif(mn,min,mx):28,28,323
 PPS(min,max,std): 21,36,2.22
 Prof: 343 to 47757, NumProf(t/r): 47414/34138
 ProcTime/Recs: 23:46:35-00:02:55/0-34137
 MxACQtime: 33ms; DRate: 194.9KB/s; Flags: 0, 0, 0
 Pulse: 275ns, IFilt: 5.0MHz; ppPol: HH HV VV
 TxPol: HHVV, PRF: 20 10 20 10 kHz
 Range: Delay 75m, Spacing 30m, Gates 100
 Ave. Pulses: 84, Rng/Prof Aspect@90m/s: 11.6

	Min	Max	Mean	Std	Varc%
hhN(dB)	-68.18	-64.60	-66.24	-76.07	10.4
vvN(dB)	-67.32	-63.92	-65.47	-75.40	10.2
hhL(dB)	-15.03	-2.72	-7.41	-10.82	45.6
vvL(dB)	-9.75	1.17	-1.32	-6.92	27.5
ppN(m/s)	-12.63	12.58	-0.04	4.12	
ppT(m/s)	-99.75	99.42	-0.30	32.58	
hh/vv(dB)	-NaN	95.04	48.92	71.27	1717
vh/hh(dB)	-NaN	-28.97	-50.52	-40.95	905.
hv/vv(dB)	-NaN	-34.58	-51.26	-45.51	375.
hh_jmp(dB)	-2.19	2.57	0.16	-8.32	14.2
vv_jmp(dB)	-2.53	2.82	0.19	-8.31	14.1