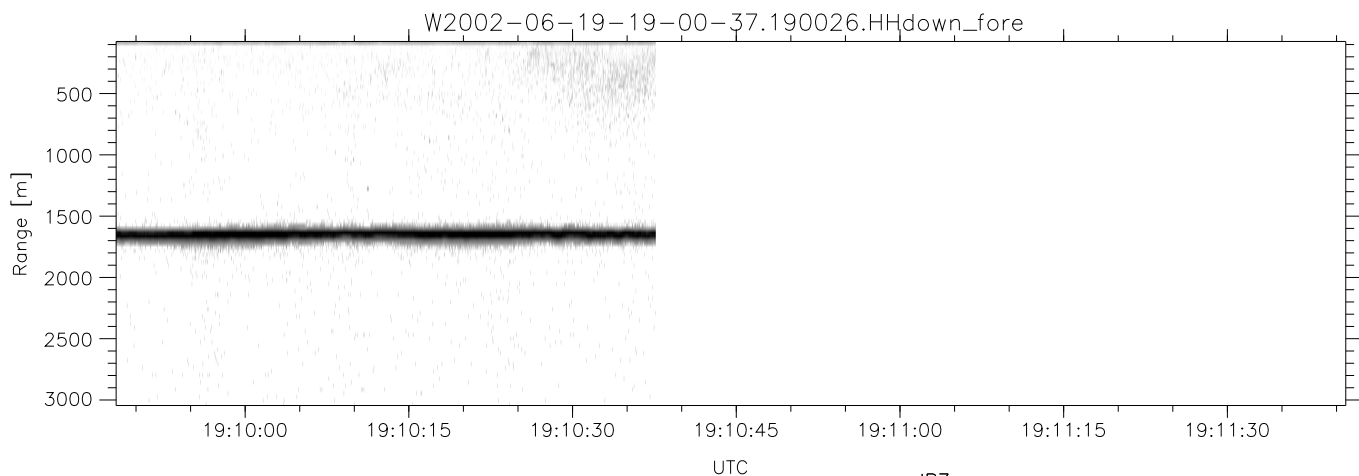
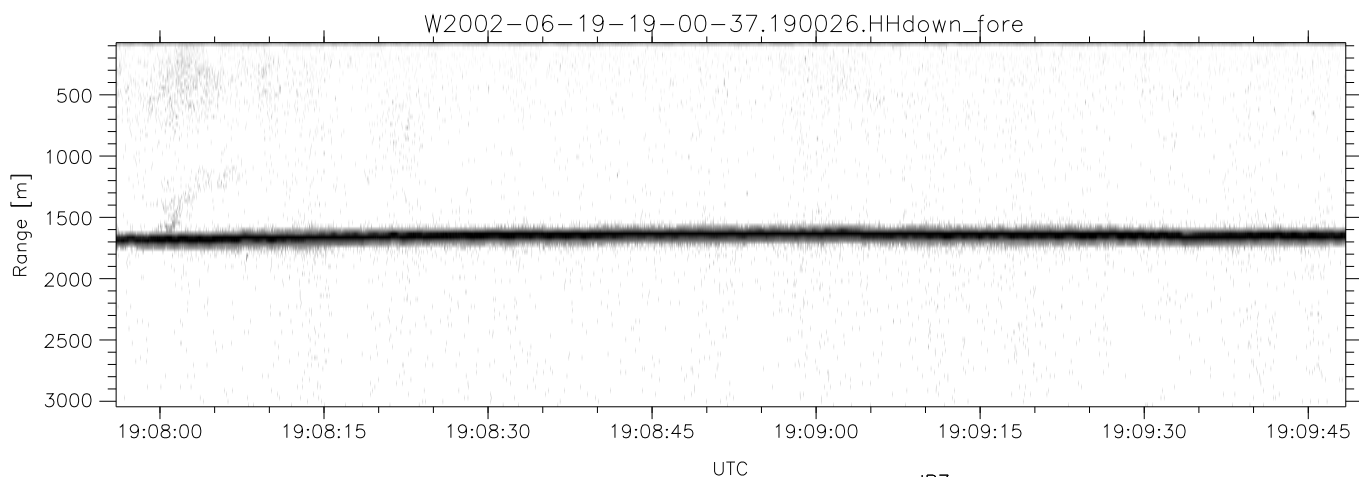
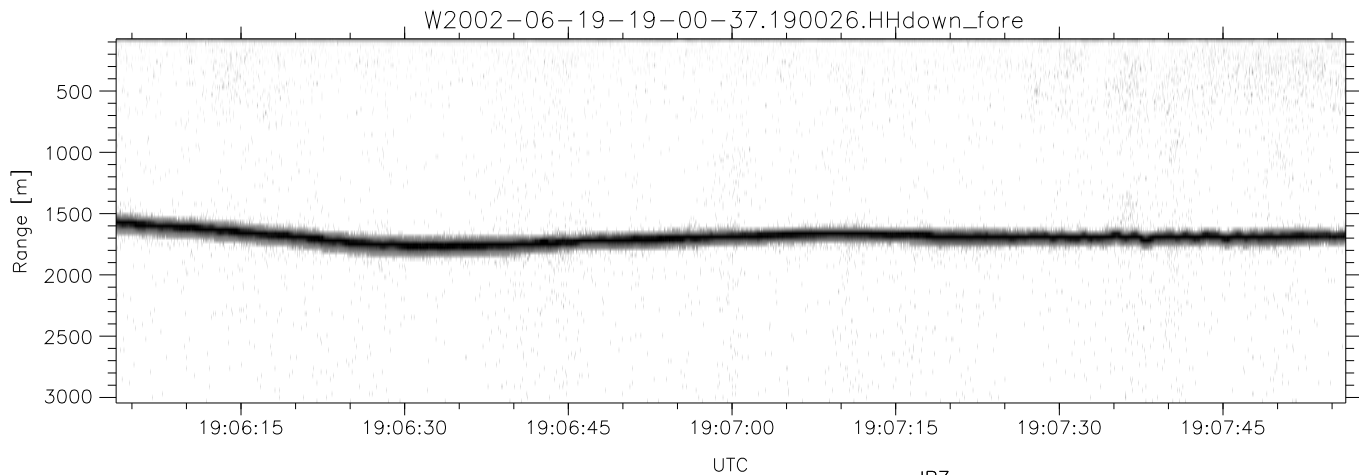


IHOP 2002 (dual-antenna config, modes 1,3,4,7) Data (cal: 55.0,50.0)

W2002-06-19-19-00-37 - PPMAG4
 IRIG:1,UTC: 19:00:26.74 to 19:10:37.61, Dur: 611s
 TimeLngth: 610.87s, TimeInt: 28ms (34.9pps)
 TimeCor=-13.0s, DSPDif(mn,min,mx):28,28,312
 PPS(min,max,std): 25,36,2.11
 Prof: 1030 to 22332, NumProf(t/r): 21302/21302
 MxACQtime: 33ms; DRate: 195.2KB/s; Flags: 0, 0, 0
 Pulse: 275ns, IFfilt: 5.0MHz; ppPol: HH HV VV
 TxPol: HHVV, PRF: 20 10 20 10 kHz
 Range: Delay 75m, Spacing 30m, Gates 100
 Ave. Pulses: 84, Rng/Prof Aspect@90m/s: 11.6

	Min	Max	Mean	Std	Varc%
hhN(dB)	-66.95	-63.53	-65.05	-75.12	9.8
vvN(dB)	-66.39	-62.43	-64.20	-74.28	9.8
hhL(dB)	-11.22	-0.08	-4.53	-8.32	41.8
vvL(dB)	-22.13	0.60	-4.72	-4.69	100.
ppN(m/s)	-12.51	12.78	-0.05	4.16	
ppT(m/s)	-98.80	100.96	-0.42	32.87	
hh/vv(dB)	-NaN	93.29	49.00	72.71	2349
vh/hh(dB)	-NaN	-7.79	-39.15	-26.74	1738
hv/vv(dB)	-NaN	-15.14	-42.60	-34.21	689.
hn_jmp(dB)	-2.34	1.93	-0.10	-8.68	13.9
vn_jmp(dB)	-2.35	2.22	-0.09	-8.73	13.7



IHOP 2002 (dual-antenna config, modes 1,3,4,7) Data (cal: 55.0,50.0)

W2002-06-19-19-00-37 - PPMAG4
 IRIG:1,UTC: 19:00:26.74 to 19:10:37.61, Dur: 611s
 TimeLngth: 610.87s, TimeInt: 28ms (34.9pps)
 TimeCor=-13.0s, DSPDif(mn,min,mx):28,28,312
 PPS(min,max,std): 25,36,2.11
 Prof: 1030 to 22332, NumProf(t/r): 21302/21302
 MxACQtime: 33ms; DRate: 195.2KB/s; Flags: 0, 0, 0
 Pulse: 275ns, IFfilt: 5.0MHz; ppPol: HH HV VV
 TxPol: HHVV, PRF: 20 10 20 10 kHz
 Range: Delay 75m, Spacing 30m, Gates 100
 Ave. Pulses: 84, Rng/Prof Aspect@90m/s: 11.6

	Min	Max	Mean	Std	Varc%
hhN(dB)	-66.95	-63.53	-65.05	-75.12	9.8
vvN(dB)	-66.39	-62.43	-64.20	-74.28	9.8
hhL(dB)	-11.22	-0.08	-4.53	-8.32	41.8
vvL(dB)	-22.13	0.60	-4.72	-4.69	100.
ppN(m/s)	-12.51	12.78	-0.05	4.16	
ppT(m/s)	-98.80	100.96	-0.42	32.87	
hh/vv(dB)	-NaN	93.29	49.00	72.71	2349
vh/hh(dB)	-NaN	-7.79	-39.15	-26.74	1738
hv/vv(dB)	-NaN	-15.14	-42.60	-34.21	689.
hh_jmp(dB)	-2.34	1.93	-0.10	-8.68	13.9
vv_jmp(dB)	-2.35	2.22	-0.09	-8.73	13.7