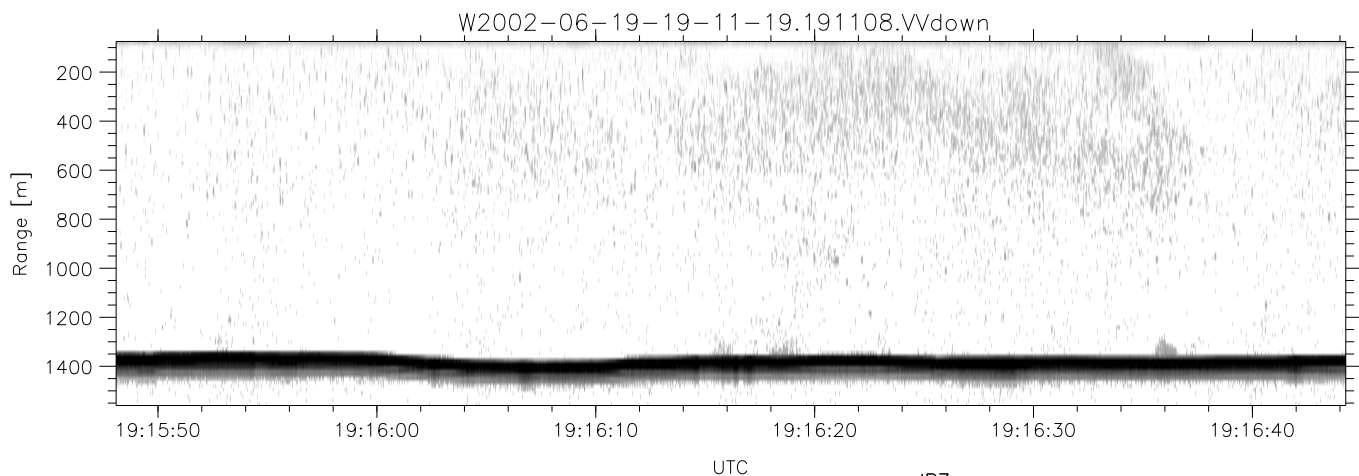
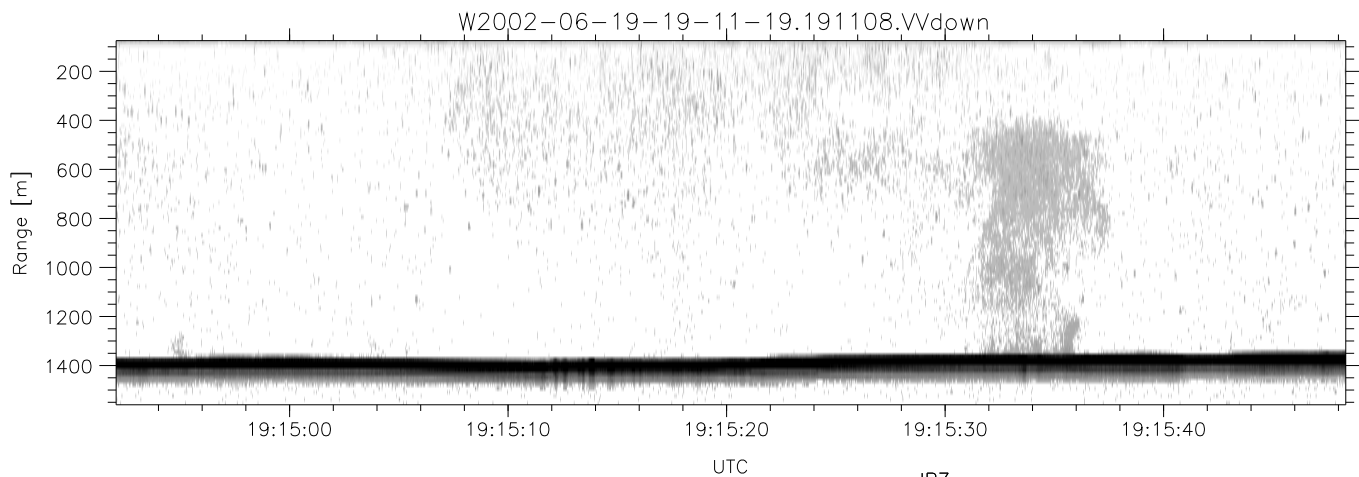
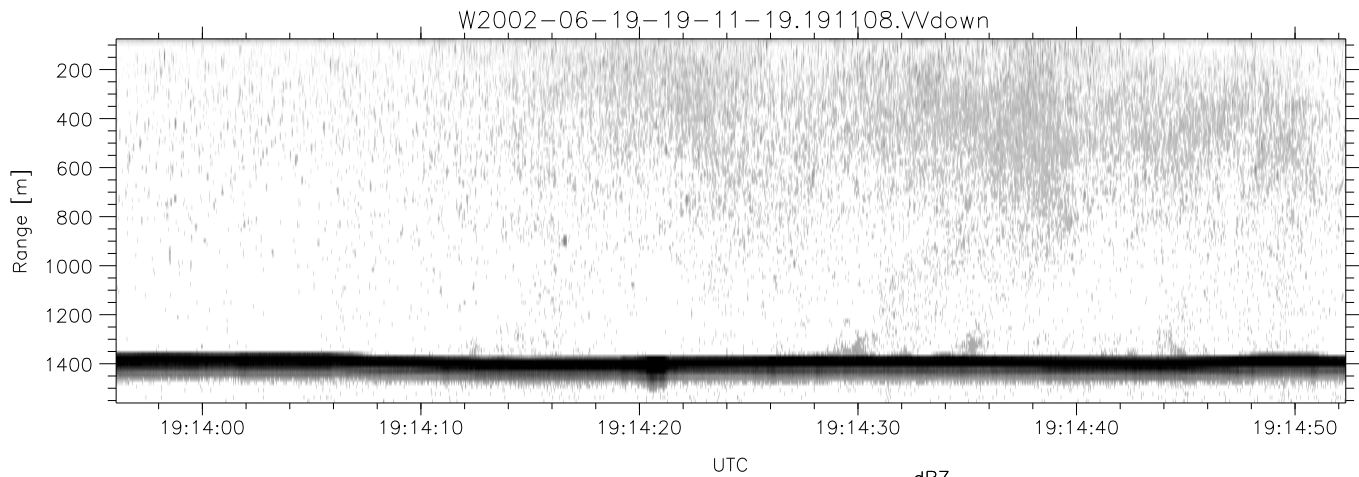


IHOP 2002 (dual-antenna config, modes 1,3,4,7) Data (cal: 55.0,50.0)

W2002-06-19-19-11-19 - PPMAG4
 IRIG:1,UTC: 19:11:08.29 to 19:23:41.59, Dur: 753s
 TimeLngth: 753.31s, TimeInt: 28ms (34.7pps)
 TimeCor=-13.0s, DSPDif(mn,min,mx):28,28,309
 PPS(min,max,std): 22,36,2.12
 Prof: 266 to 26402, NumProf(t/r): 26136/17069
 ProcTime/Recs: 19:11:08-19:19:20/0-17068
 MxACQtime: 33ms; DRate: 194.2KB/s; Flags: 0, 0, 0
 Pulse: 275ns, IFfilt: 5.0MHz; ppPol: HH HV VV
 TxPol: HHVV, PRF: 20 10 20 10 kHz
 Range: Delay 75m, Spacing 15m, Gates 100
 Ave. Pulses: 84, Rng/Prof Aspect@90m/s: 5.8

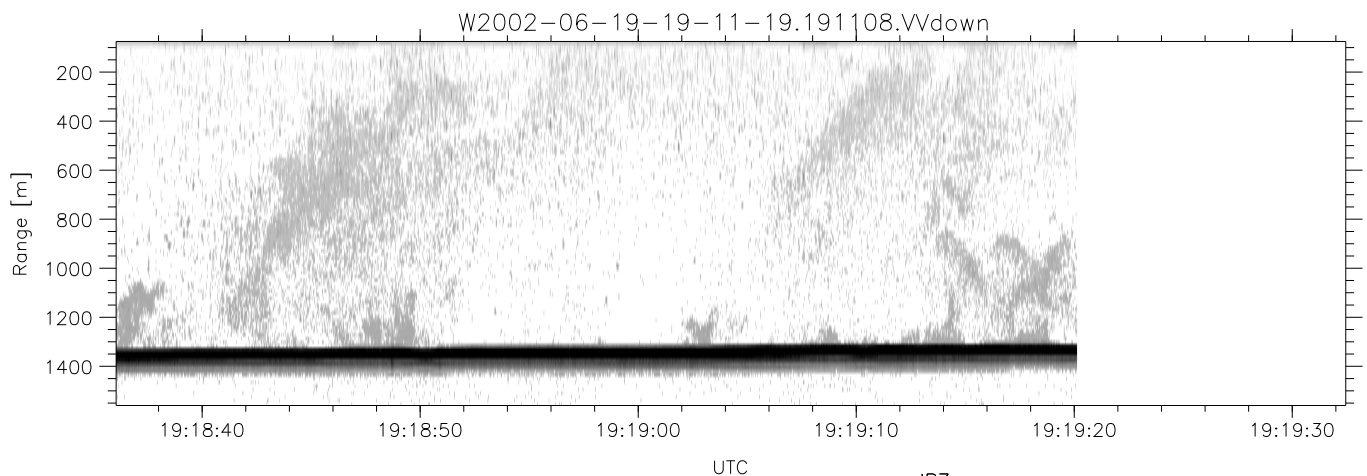
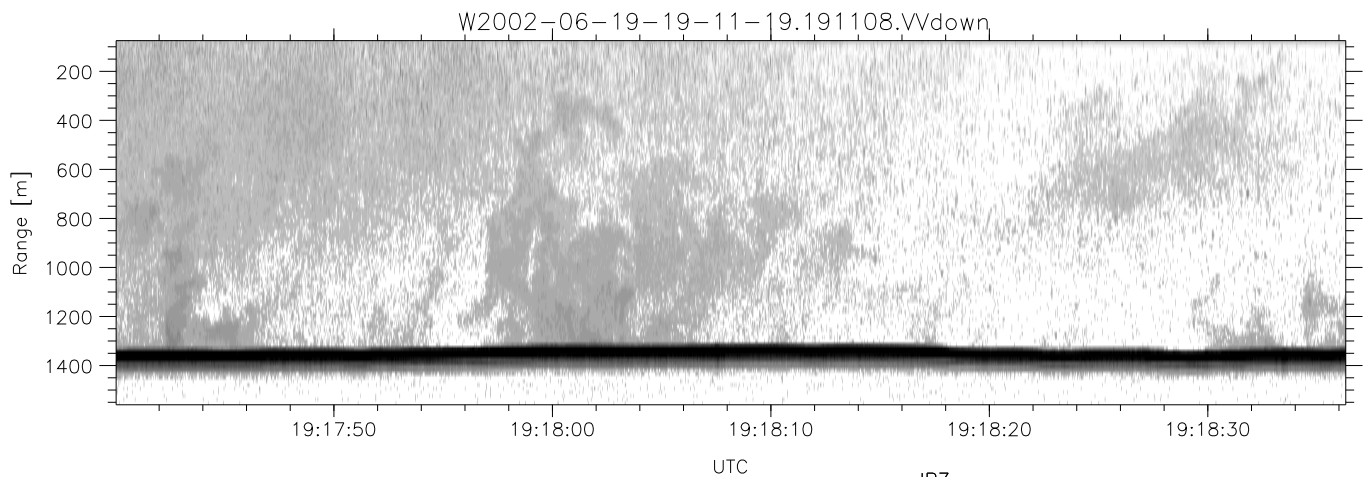
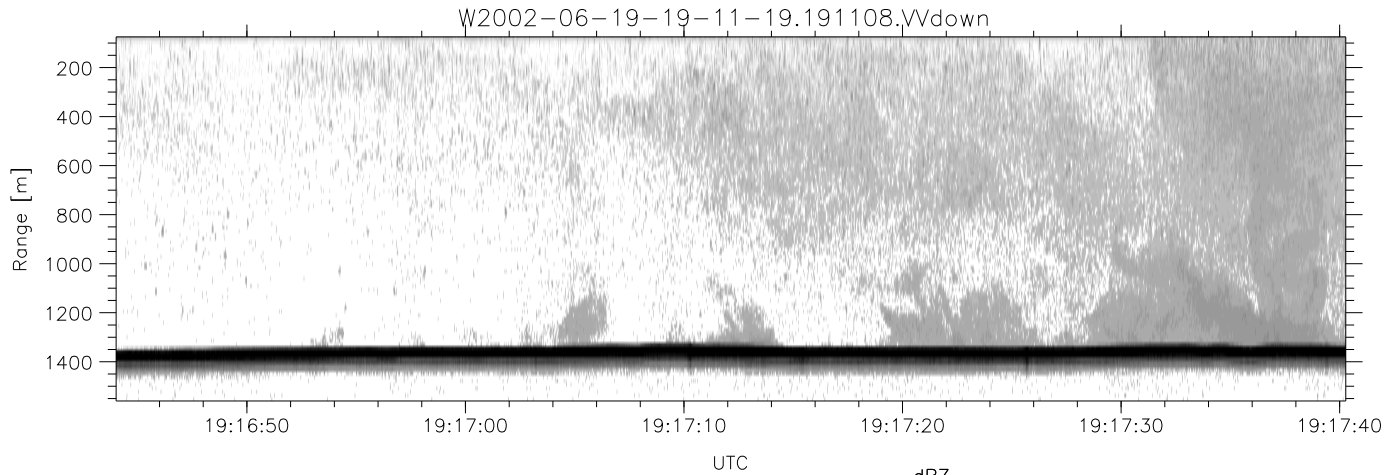
	Min	Max	Mean	Std	Varc%
hhN(dB)	-66.87	-63.56	-65.11	-75.17	9.9
vvN(dB)	-65.84	-62.69	-64.19	-74.24	9.9
hhL(dB)	-13.02	-2.12	-6.38	-9.98	43.7
vvL(dB)	-20.04	-0.62	-10.13	-10.99	82.0
ppN(m/s)	-12.54	12.36	0.02	4.17	
ppT(m/s)	-99.07	97.64	0.13	32.98	
hh/vv(dB)	-NaN	83.68	-NaN	71.56	-158
vh/hh(dB)	-NaN	-28.39	-48.45	-40.47	626.
hv/vv(dB)	-NaN	-33.76	-49.06	-45.39	233.
hnjmp(dB)	-2.21	2.12	-0.08	-8.67	13.8
vnjmp(dB)	-2.53	2.03	-0.09	-8.67	13.9



IHOP 2002 (dual-antenna config, modes 1,3,4,7) Data (cal: 55.0,50.0)

W2002-06-19-19-11-19 - PPMAG4
 IRIG:1,UTC: 19:11:08.29 to 19:23:41.59, Dur: 753s
 TimeLngth: 753.31s, TimeInt: 28ms (34.7pps)
 TimeCor=-13.0s, DSPDif(mn,min,mx):28,28,309
 PPS(min,max,std): 22,36,2.12
 Prof: 266 to 26402, NumProf(t/r): 26136/17069
 ProcTime/Recs: 19:11:08-19:19:20/0-17068
 MxACQtime: 33ms; DRate: 194.2KB/s; Flags: 0, 0, 0
 Pulse: 275ns, IFfilt: 5.0MHz; ppPol: HH HV VV
 TxPol: HHVV, PRF: 20 10 20 10 kHz
 Range: Delay 75m, Spacing 15m, Gates 100
 Ave. Pulses: 84, Rng/Prof Aspect@90m/s: 5.8

	Min	Max	Mean	Std	Varc%
hhN(dB)	-66.87	-63.56	-65.11	-75.17	9.9
vvN(dB)	-65.84	-62.69	-64.19	-74.24	9.9
hhL(dB)	-13.02	-2.12	-6.38	-9.98	43.7
vvL(dB)	-20.04	-0.62	-10.13	-10.99	82.0
ppN(m/s)	-12.54	12.36	0.02	4.17	
ppT(m/s)	-99.07	97.64	0.13	32.98	
hh/vv(dB)	-NaN	83.68	-NaN	71.56	-158
vh/hh(dB)	-NaN	-28.39	-48.45	-40.47	626.
hv/vv(dB)	-NaN	-33.76	-49.06	-45.39	233.
hnjmp(dB)	-2.21	2.12	-0.08	-8.67	13.8
vnjmp(dB)	-2.53	2.03	-0.09	-8.67	13.9



IHOP 2002 (dual-antenna config, modes 1,3,4,7) Data (cal: 55.0,50.0)

W2002-06-19-19-11-19 - PPMAG4
 IRIG:1,UTC: 19:11:08.29 to 19:23:41.59, Dur: 753s
 TimeLngth: 753.31s, TimeInt: 28ms (34.7pps)
 TimeCor=-13.0s, DSPDif(mn,min,mx):28,28,309
 PPS(min,max,std): 22,36,2.12
 Prof: 266 to 26402, NumProf(t/r): 26136/17069
 ProcTime/Recs: 19:11:08-19:19:20/0-17068
 MxACQtime: 33ms; DRate: 194.2KB/s; Flags: 0, 0, 0
 Pulse: 275ns, IFfilt: 5.0MHz; ppPol: HH HV VV
 TxPol: HHVV, PRF: 20 10 20 10 kHz
 Range: Delay 75m, Spacing 15m, Gates 100
 Ave. Pulses: 84, Rng/Prof Aspect@90m/s: 5.8

	Min	Max	Mean	Std	Varc%
hhN(dB)	-66.87	-63.56	-65.11	-75.17	9.9
vvN(dB)	-65.84	-62.69	-64.19	-74.24	9.9
hhL(dB)	-13.02	-2.12	-6.38	-9.98	43.7
vvL(dB)	-20.04	-0.62	-10.13	-10.99	82.0
ppN(m/s)	-12.54	12.36	0.02	4.17	
ppT(m/s)	-99.07	97.64	0.13	32.98	
hh/vv(dB)	-NaN	83.68	-NaN	71.56	-158
vh/hh(dB)	-NaN	-28.39	-48.45	-40.47	626.
hv/vv(dB)	-NaN	-33.76	-49.06	-45.39	233.
hnjmp(dB)	-2.21	2.12	-0.08	-8.67	13.8
vnjmp(dB)	-2.53	2.03	-0.09	-8.67	13.9