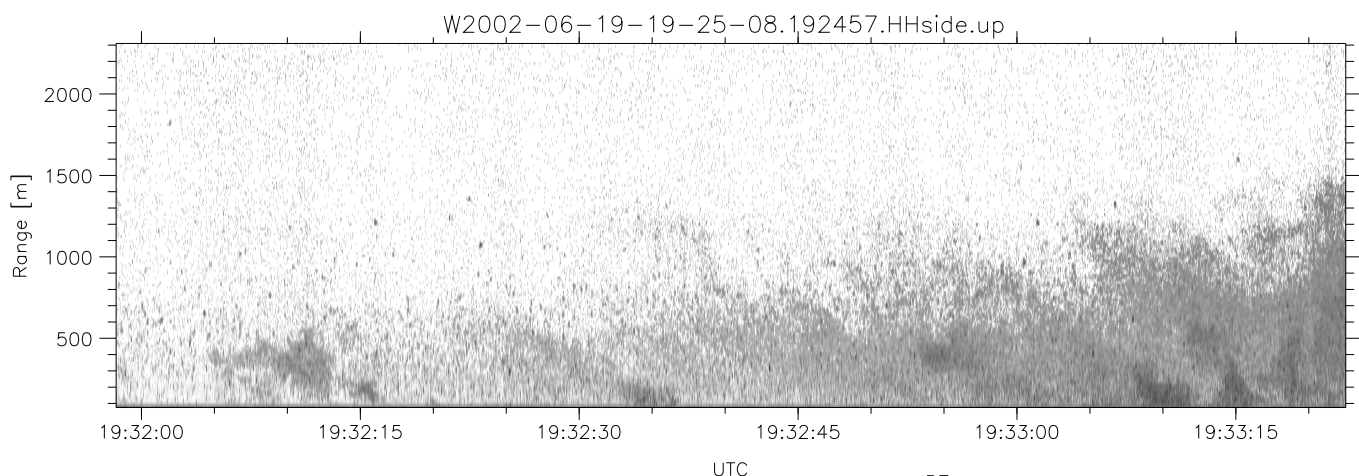
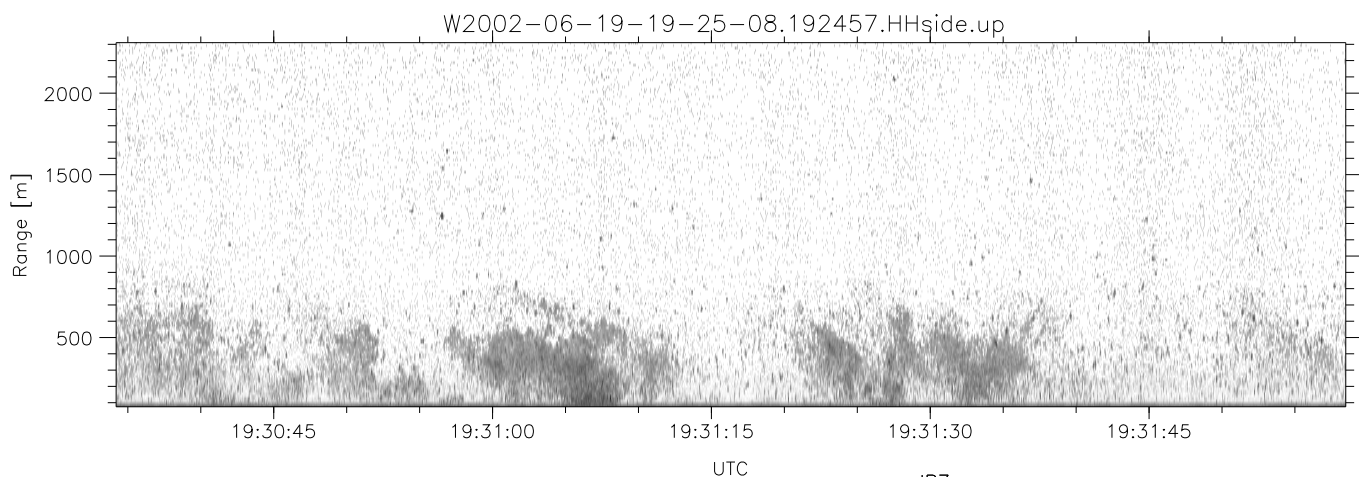
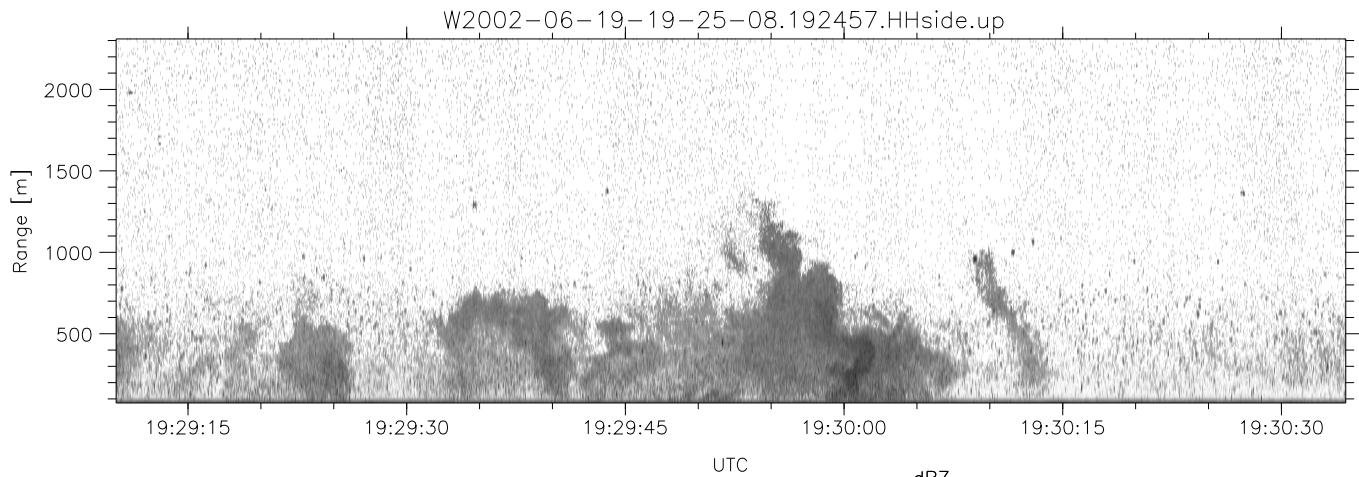


IHOP 2002 (dual-antenna config, modes 1,3,4,7) Data (cal: 49.0,50.0)

W2002-06-19-19-25-08 - SPPMAG
 IRIG:1,UTC: 19:24:57.66 to 19:47:15.16, Dur: 1338s
 TimeLngth: 1337.50s, TimeInt: 24ms (41.0pps)
 TimeCor=-13.0s, DSPDif(mn,min,mx):21,20,507
 PPS(min,max,std): 24,42,2.39
 Prof: 600 to 55447, NumProf(t/r): 54847/30875
 ProcTime/Recs: 19:24:57-19:37:29/0-30874
 MxACQtime: 17ms; DRate: 98.2KB/s; Flags: 0, 0, 0
 Pulse: 275ns, IFfilt: 5.0MHz; ppPol: HH
 TxPol: H, PRF: 20 kHz
 Range: Delay 75m, Spacing 15m, Gates 150
 Ave. Pulses: 348, Rng/Prof Aspect@90m/s: 6.8

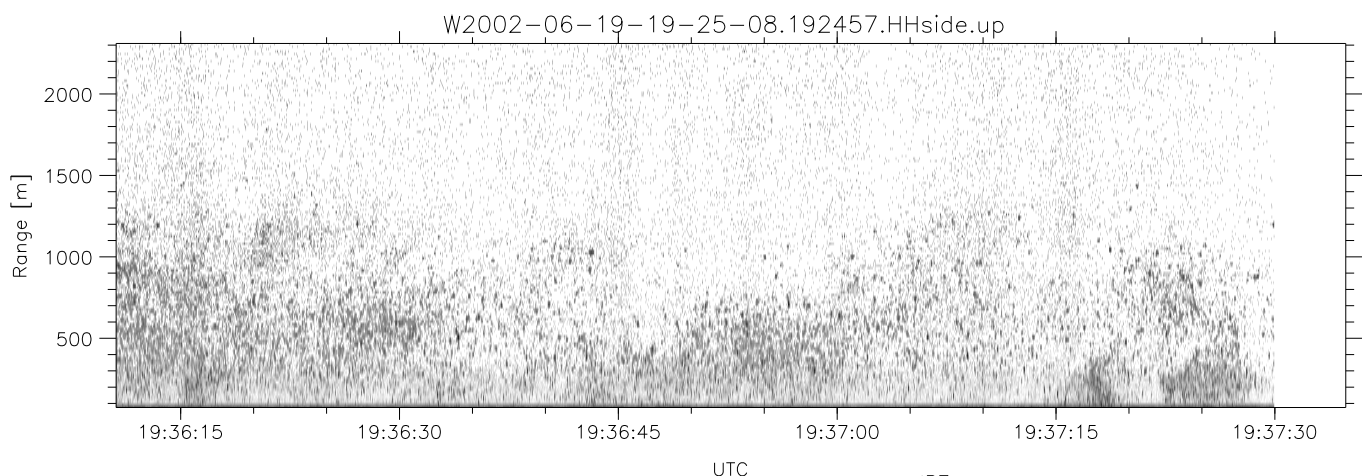
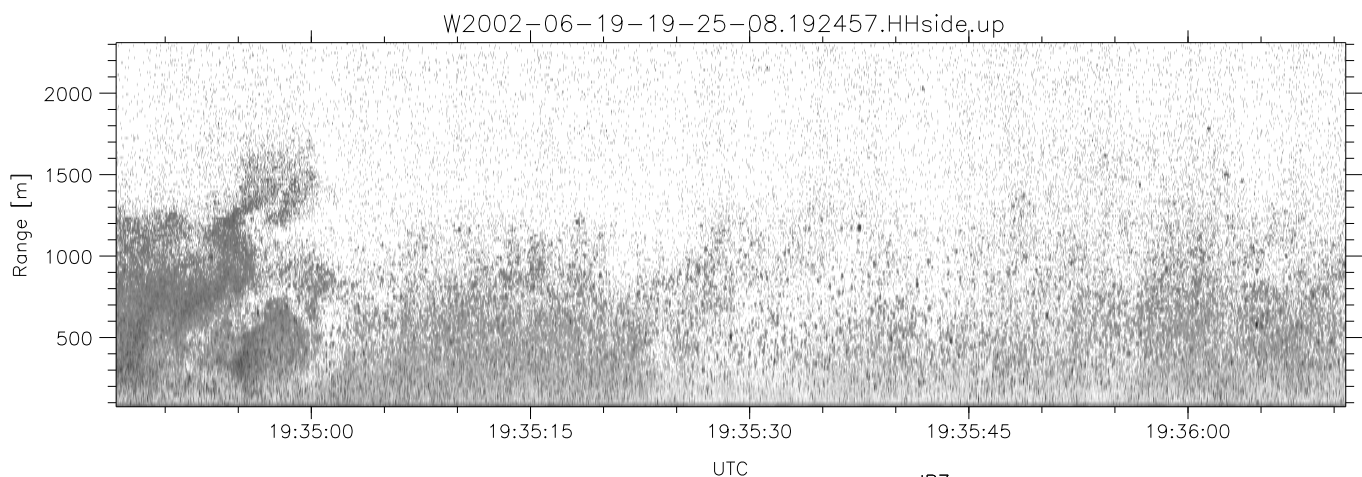
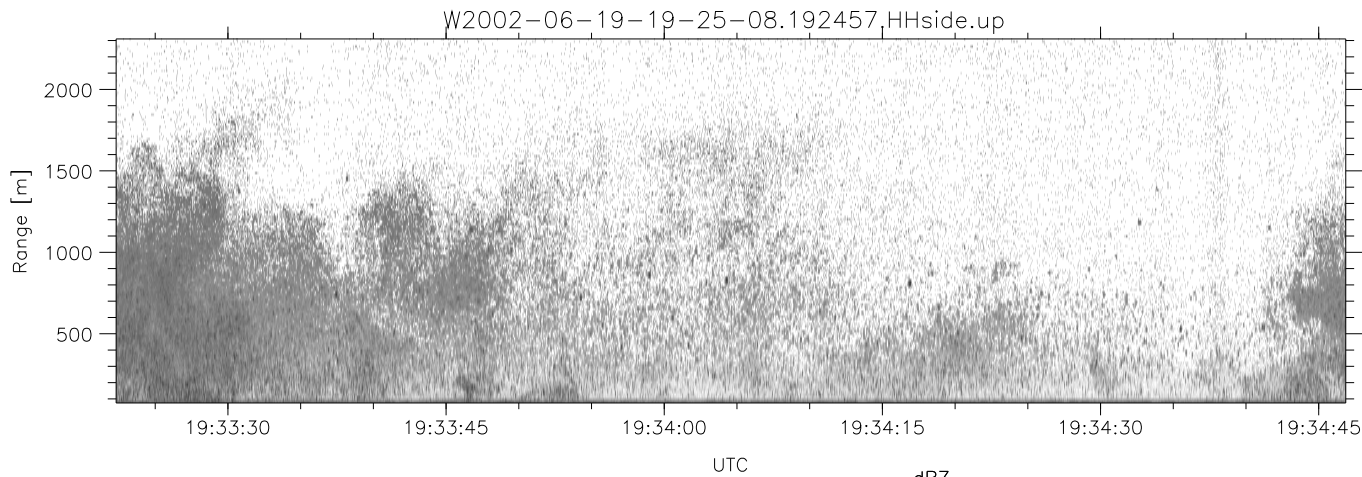
	Min	Max	Mean	Std	Varc%
hhN(dB)	-66.42	-64.50	-65.49	-78.35	5.2
vvN(dB)	-65.26	-63.43	-64.32	-77.23	5.1
hhL(dB)	-12.67	-1.10	-5.66	-9.71	39.3
vhL(dB)	-23.18	-4.03	-11.50	-12.35	82.2
ppN(m/s)	-15.80	15.80	0.03	9.08	
ppT(m/s)	-0.03	0.03	-0.00	0.01	
vh/hh(dB)	-NaN	-23.28	-33.12	-34.33	75.7
hnjmp(dB)	-1.22	0.98	-0.13	-11.83	6.8
vnjmp(dB)	-1.42	1.10	-0.12	-11.78	6.8



IHOP 2002 (dual-antenna config, modes 1,3,4,7) Data (cal: 49.0,50.0)

W2002-06-19-19-25-08 - SPPMAG
 IRIG:1,UTC: 19:24:57.66 to 19:47:15.16, Dur: 1338s
 TimeLngth: 1337.50s, TimeInt: 24ms (41.0pps)
 TimeCor=-13.0s, DSPDif(mn,min,mx):21,20,507
 PPS(min,max,std): 24,42,2.39
 Prof: 600 to 55447, NumProf(t/r): 54847/30875
 ProcTime/Recs: 19:24:57-19:37:29/0-30874
 MxACQtime: 17ms; DRate: 98.2KB/s; Flags: 0, 0, 0
 Pulse: 275ns, IFfilt: 5.0MHz; ppPol: HH
 TxPol: H, PRF: 20 kHz
 Range: Delay 75m, Spacing 15m, Gates 150
 Ave. Pulses: 348, Rng/Prof Aspect@90m/s: 6.8

	Min	Max	Mean	Std	Varc%
hhN(dB)	-66.42	-64.50	-65.49	-78.35	5.2
vvN(dB)	-65.26	-63.43	-64.32	-77.23	5.1
hhL(dB)	-12.67	-1.10	-5.66	-9.71	39.3
vhL(dB)	-23.18	-4.03	-11.50	-12.35	82.2
ppN(m/s)	-15.80	15.80	0.03	9.08	
ppT(m/s)	-0.03	0.03	-0.00	0.01	
vh/hh(dB)	-NaN	-23.28	-33.12	-34.33	75.7
hnjmp(dB)	-1.22	0.98	-0.13	-11.83	6.8
vnjmp(dB)	-1.42	1.10	-0.12	-11.78	6.8



IHOP 2002 (dual-antenna config, modes 1,3,4,7) Data (cal: 49.0,50.0)

W2002-06-19-19-25-08 - SPPMAG
 IRIG:1,UTC: 19:24:57.66 to 19:47:15.16, Dur: 1338s
 TimeLngth: 1337.50s, TimeInt: 24ms (41.0pps)
 TimeCor=-13.0s, DSPDif(mn,min,mx):21,20,507
 PPS(min,max,std): 24,42,2.39
 Prof: 600 to 55447, NumProf(t/r): 54847/30875
 ProcTime/Recs: 19:24:57-19:37:29/0-30874
 MxACQtime: 17ms; DRate: 98.2KB/s; Flags: 0, 0, 0
 Pulse: 275ns, IFfilt: 5.0MHz; ppPol: HH
 TxPol: H, PRF: 20 kHz
 Range: Delay 75m, Spacing 15m, Gates 150
 Ave. Pulses: 348, Rng/Prof Aspect@90m/s: 6.8

	Min	Max	Mean	Std	Varc%
hhN(dB)	-66.42	-64.50	-65.49	-78.35	5.2
vvN(dB)	-65.26	-63.43	-64.32	-77.23	5.1
hhL(dB)	-12.67	-1.10	-5.66	-9.71	39.3
vhL(dB)	-23.18	-4.03	-11.50	-12.35	82.2
ppN(m/s)	-15.80	15.80	0.03	9.08	
ppT(m/s)	-0.03	0.03	-0.00	0.01	
vh/hh(dB)	-NaN	-23.28	-33.12	-34.33	75.7
hn_jmp(dB)	-1.22	0.98	-0.13	-11.83	6.8
vn_jmp(dB)	-1.42	1.10	-0.12	-11.78	6.8