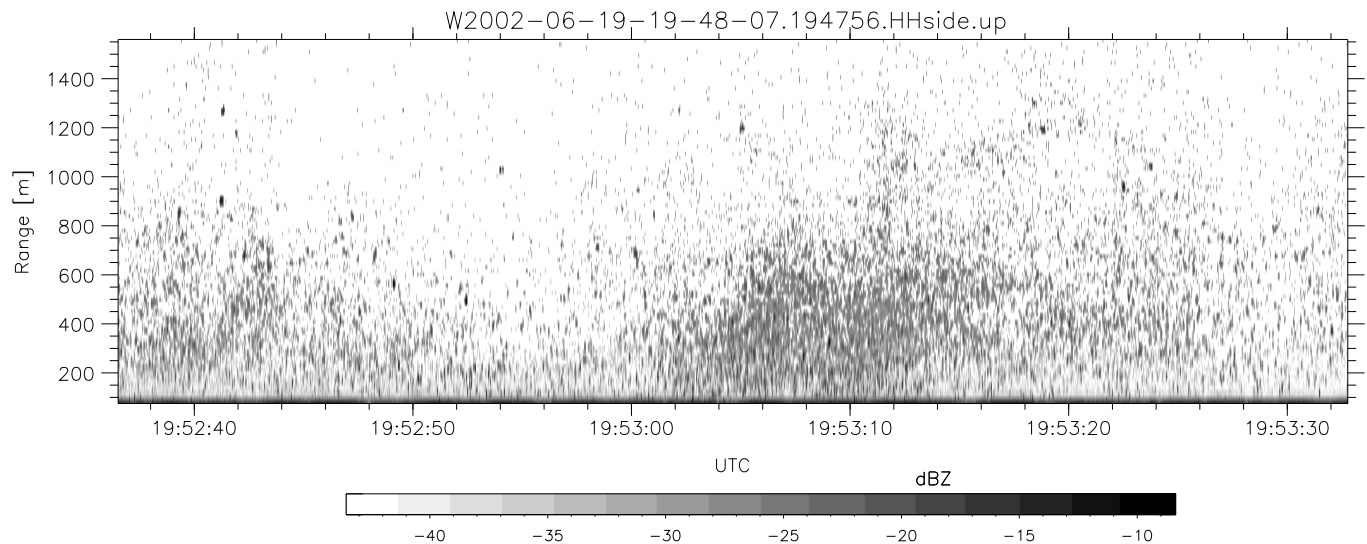
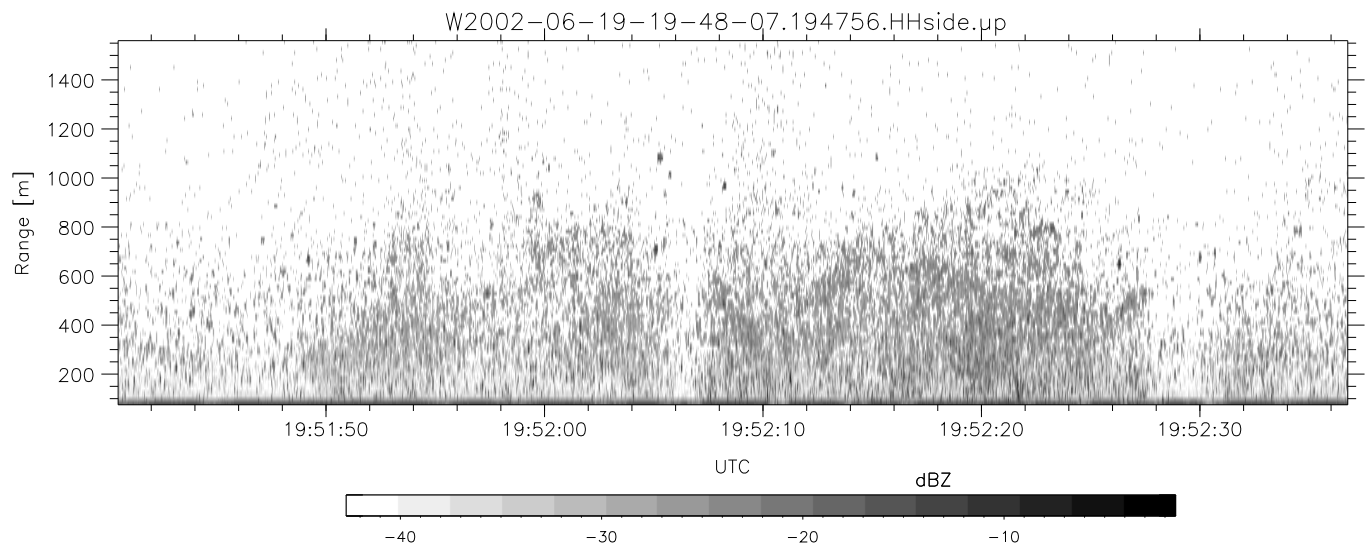
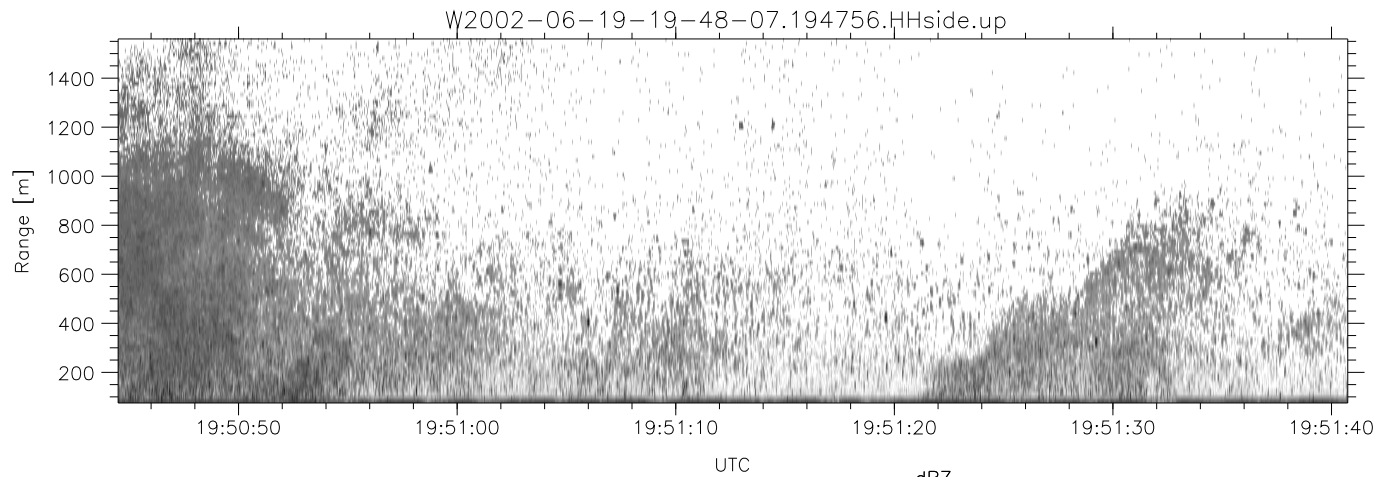


IHOP 2002 (dual-antenna config, modes 1,3,4,7) Data (cal: 49.0,50.0)

W2002-06-19-19-48-07 - PPMAG4  
 IRIG:1,UTC: 19:47:56.47 to 20:08:03.81, Dur: 1207s  
 TimeLngth: 1207.35s, TimeInt: 28ms (34.6pps)  
 TimeCor=-13.0s, DSPDif(mn,min,mx):28,28,677  
 PPS(min,max,std): 12,36,2.42  
 Prof: 550 to 42269, NumProf(t/r): 41719/17069  
 ProcTime/Recs: 19:47:56-19:56:10/0-17068  
 MxACQtime: 33ms; DRate: 193.4KB/s; Flags: 0, 0, 0  
 Pulse: 275ns, IFfilt: 5.0MHz; ppPol: HH HV VV  
 TxPol: HHVV, PRF: 20 10 20 10 kHz  
 Range: Delay 75m, Spacing 15m, Gates 100  
 Ave. Pulses: 84, Rng/Prof Aspect@90m/s: 5.8

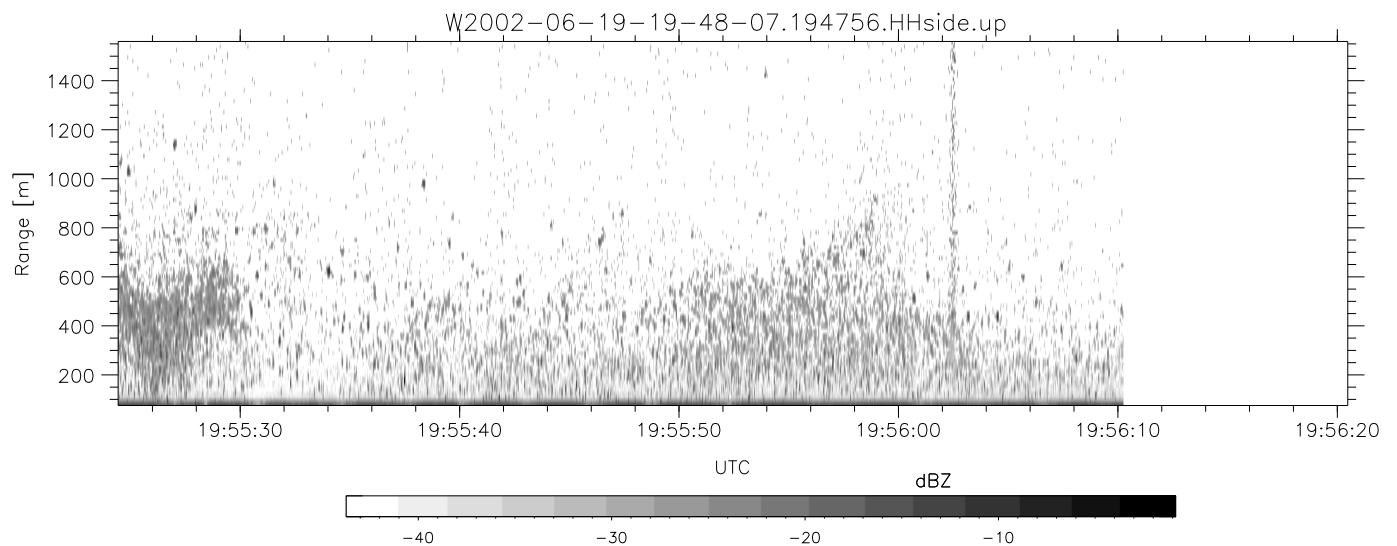
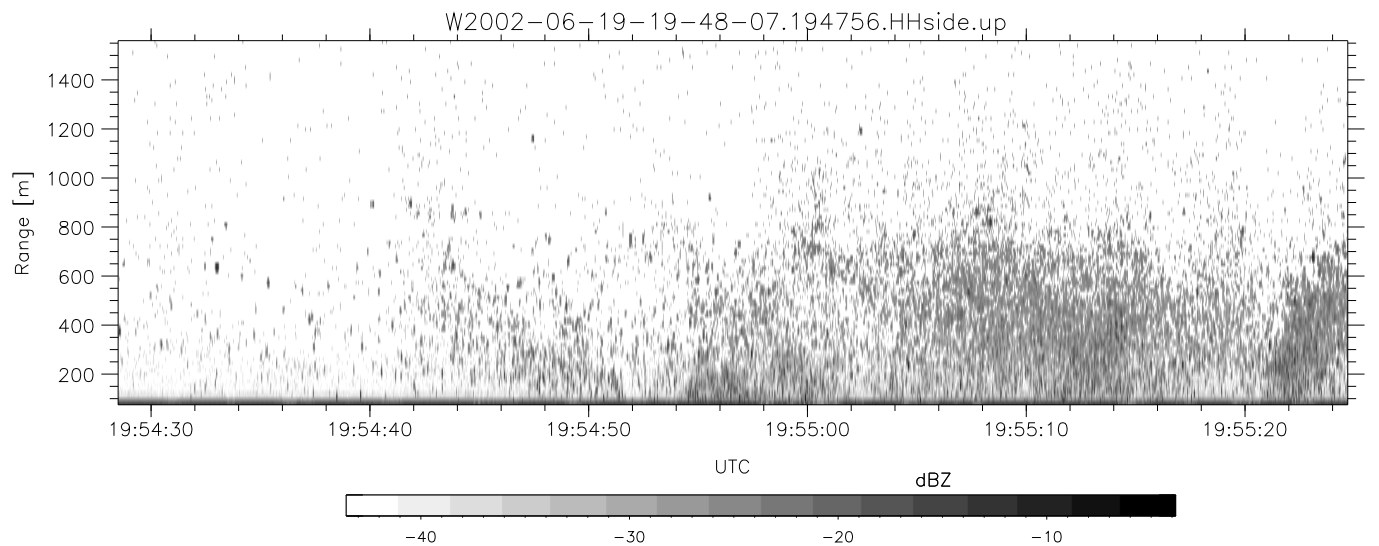
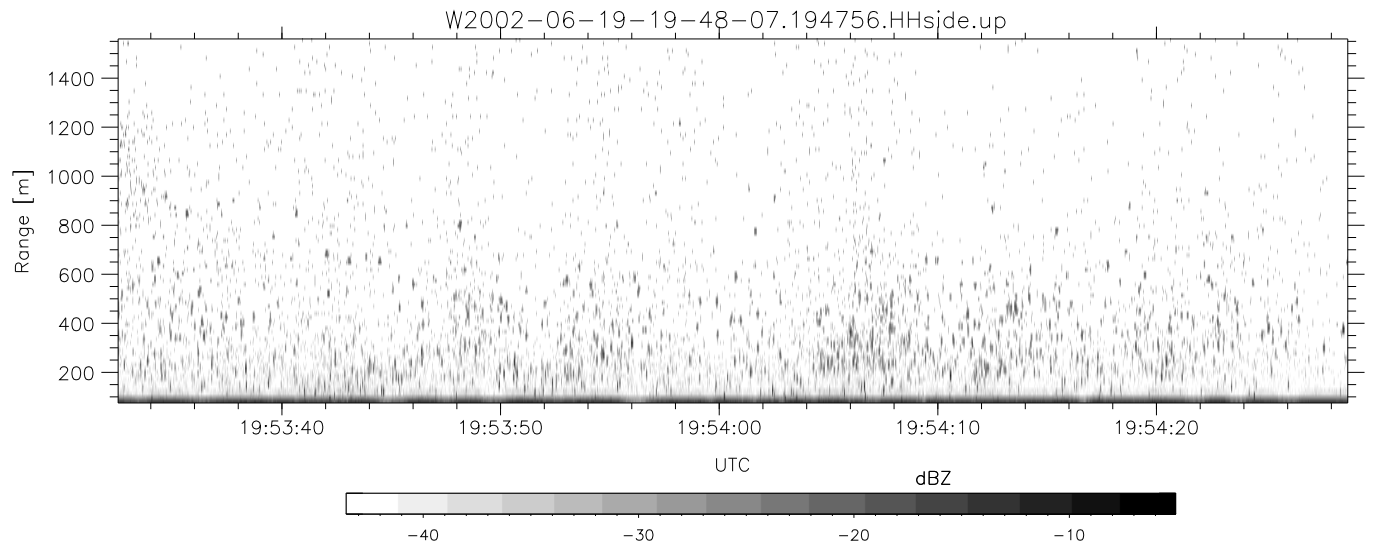
	Min	Max	Mean	Std	Varc%
hhN(dB)	-67.89	-58.09	-65.60	-69.70	38.9
vvN(dB)	-66.41	-56.93	-64.42	-69.51	31.0
hhL(dB)	-13.29	-1.48	-3.58	-8.76	30.3
vvL(dB)	-15.95	-0.01	-3.03	-6.84	41.6
ppN(m/s)	-12.34	12.42	0.08	4.10	
ppT(m/s)	-97.46	98.09	0.63	32.40	
hh/vv(dB)	-NaN	50.69	13.40	31.17	5995
vh/hh(dB)	-NaN	-20.64	-31.86	-27.47	275.
hv/vv(dB)	-NaN	-22.55	-53.29	-38.75	2848
hnjmp(dB)	-5.73	4.55	-0.08	-8.56	14.2
vnjmp(dB)	-4.82	4.01	-0.11	-8.58	14.2



IHOP 2002 (dual-antenna config, modes 1,3,4,7) Data (cal: 49.0,50.0)

W2002-06-19-19-48-07 - PPMAG4

	Min	Max	Mean	Std	Varc%	
IRIG:1,UTC: 19:47:56.47 to 20:08:03.81, Dur: 1207s	hhN (dB)	-67.89	-58.09	-65.60	-69.70	38.9
TimeLngth: 1207.35s, TimeInt: 28ms (34.6pps)	vvN (dB)	-66.41	-56.93	-64.42	-69.51	31.0
TimeCor=-13.0s, DSPDif(mn,min,mx):28,28,677	hhL (dB)	-13.29	-1.48	-3.58	-8.76	30.3
PPS(min,max,std): 12,36,2.42	vvL (dB)	-15.95	-0.01	-3.03	-6.84	41.6
Prof: 550 to 42269, NumProf(t/r): 41719/17069	ppN (m/s)	-12.34	12.42	0.08	4.10	
ProcTime/Recs: 19:47:56-19:56:10/0-17068	ppT (m/s)	-97.46	98.09	0.63	32.40	
MxACQtime: 33ms; DRate: 193.4KB/s; Flags: 0, 0, 0	hh/vv (dB)	-NaN	50.69	13.40	31.17	5995
Pulse: 275ns, IFfilt: 5.0MHz; ppPol: HH HV VV	vh/hh (dB)	-NaN	-20.64	-31.86	-27.47	275.
TxPol: HHVV, PRF: 20 10 20 10 kHz	hv/vv (dB)	-NaN	-22.55	-53.29	-38.75	2848
Range: Delay 75m, Spacing 15m, Gates 100	hn/jmp (dB)	-5.73	4.55	-0.08	-8.56	14.2
Ave. Pulses: 84, Rng/Prof Aspect@90m/s: 5.8	vn/jmp (dB)	-4.82	4.01	-0.11	-8.58	14.2



IHOP 2002 (dual-antenna config, modes 1,3,4,7) Data (cal: 49.0,50.0)

W2002-06-19-19-48-07 - PPMAG4  
IRIG:1,UTC: 19:47:56.47 to 20:08:03.81, Dur: 1207s  
TimeLngth: 1207.35s, TimeInt: 28ms (34.6pps)  
TimeCor=-13.0s, DSPDif(mn,min,mx):28,28,677  
PPS(min,max,std): 12,36,2.42  
Prof: 550 to 42269, NumProf(t/r): 41719/17069  
ProcTime/Recs: 19:47:56-19:56:10/0-17068  
MxACQtime: 33ms; DRate: 193.4KB/s; Flags: 0, 0, 0  
Pulse: 275ns, IFfilt: 5.0MHz; ppPol: HH HV VV  
TxPol: HHVV, PRF: 20 10 20 10 kHz  
Range: Delay 75m, Spacing 15m, Gates 100  
Ave. Pulses: 84, Rng/Prof Aspect@90m/s: 5.8

	Min	Max	Mean	Std	Varc%
hhN(dB)	-67.89	-58.09	-65.60	-69.70	38.9
vvN(dB)	-66.41	-56.93	-64.42	-69.51	31.0
hhL(dB)	-13.29	-1.48	-3.58	-8.76	30.3
vvL(dB)	-15.95	-0.01	-3.03	-6.84	41.6
ppN(m/s)	-12.34	12.42	0.08	4.10	
ppT(m/s)	-97.46	98.09	0.63	32.40	
hh/vv(dB)	-NaN	50.69	13.40	31.17	5995
vh/hh(dB)	-NaN	-20.64	-31.86	-27.47	275.
hv/vv(dB)	-NaN	-22.55	-53.29	-38.75	2848
hnjmp(dB)	-5.73	4.55	-0.08	-8.56	14.2
vnjmp(dB)	-4.82	4.01	-0.11	-8.58	14.2