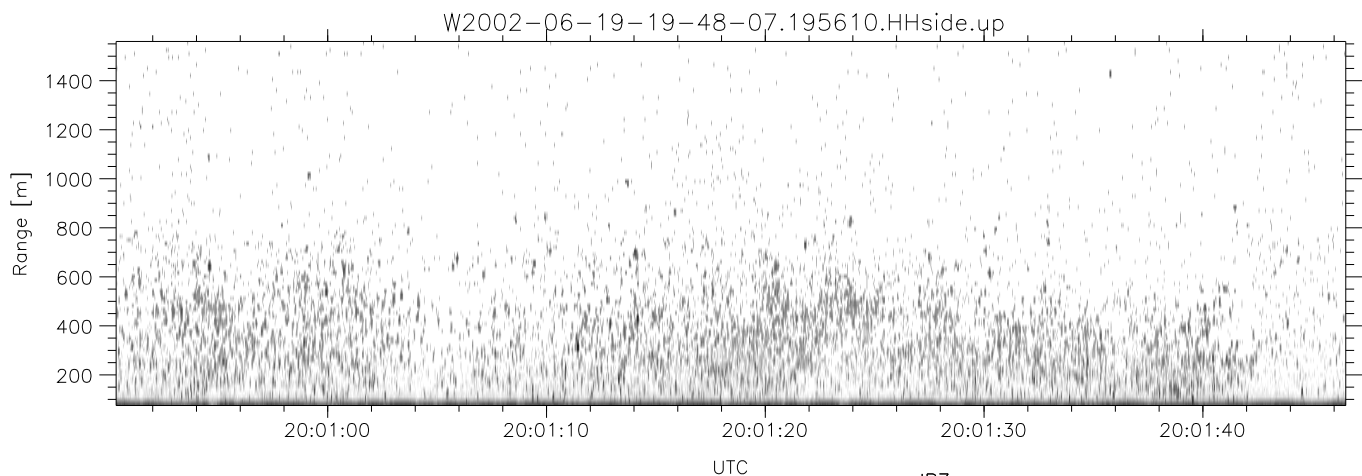
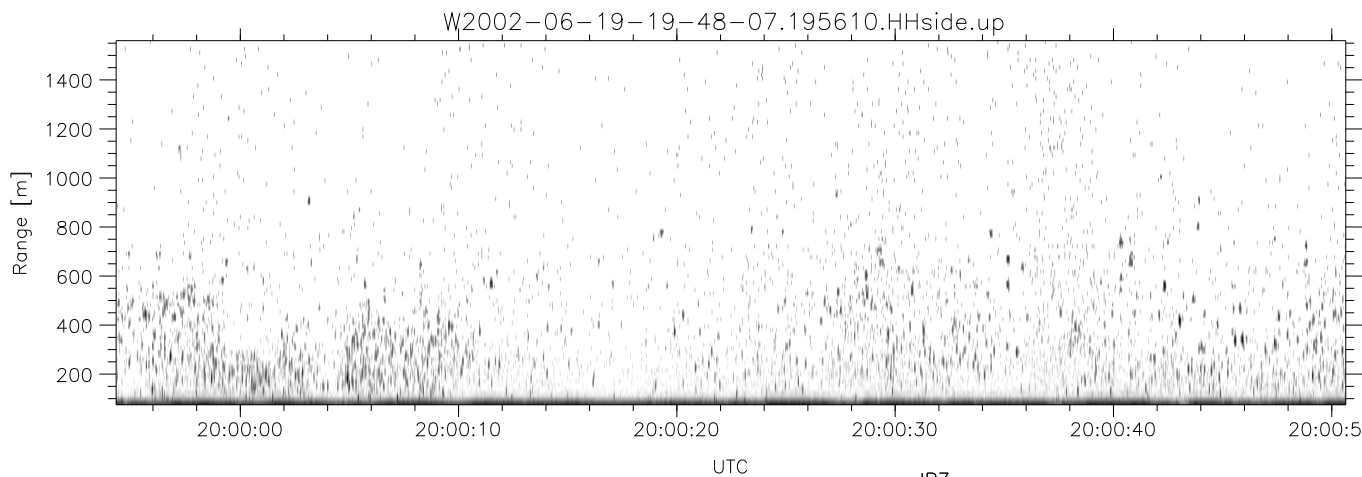
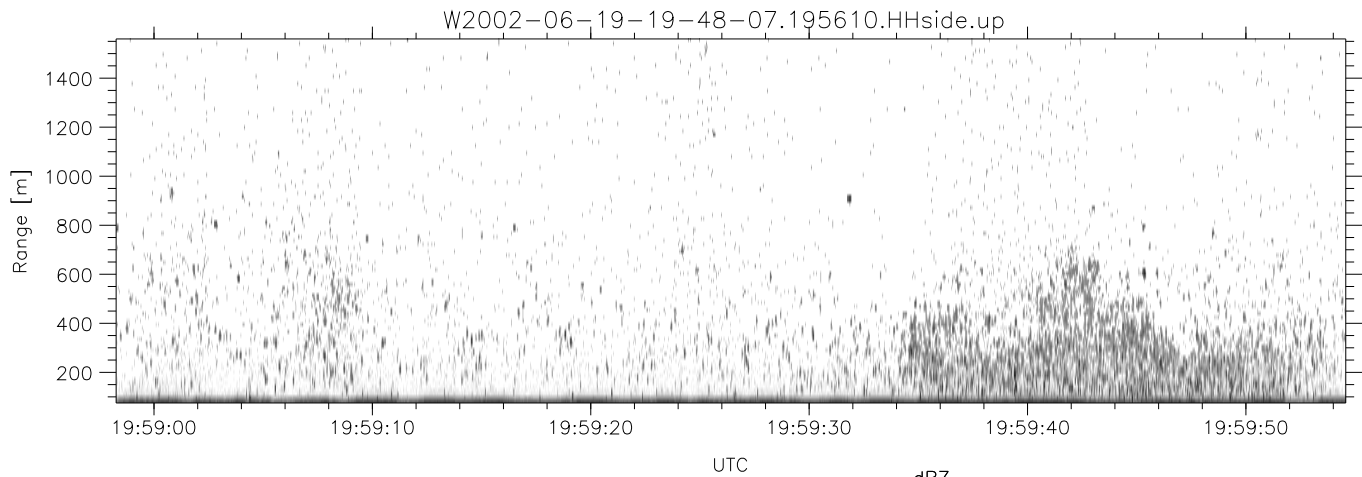


IHOP 2002 (dual-antenna config, modes 1,3,4,7) Data (cal: 49.0,50.0)

W2002-06-19-19-48-07 - PPMAG4  
 IRIG:1,UTC: 19:47:56.47 to 20:08:03.81, Dur: 1207s  
 TimeLngth: 1207.35s, TimeInt: 28ms (34.6pps)  
 TimeCor=-13.0s, DSPDif(mn,min,mx):29,28,316  
 PPS(min,max,std): 25,36,2.19  
 Prof: 550 to 42269, NumProf(t/r): 41719/17069  
 ProcTime/Recs: 19:56:10-20:04:24/17069-34137  
 MxACQtime: 33ms; DRate: 193.4KB/s; Flags: 0, 0, 0  
 Pulse: 275ns, IFilt: 5.0MHz; ppPol: HH HV VV  
 TxPol: HHVV, PRF: 20 10 20 10 kHz  
 Range: Delay 75m, Spacing 15m, Gates 100  
 Ave. Pulses: 84, Rng/Prof Aspect@90m/s: 5.8

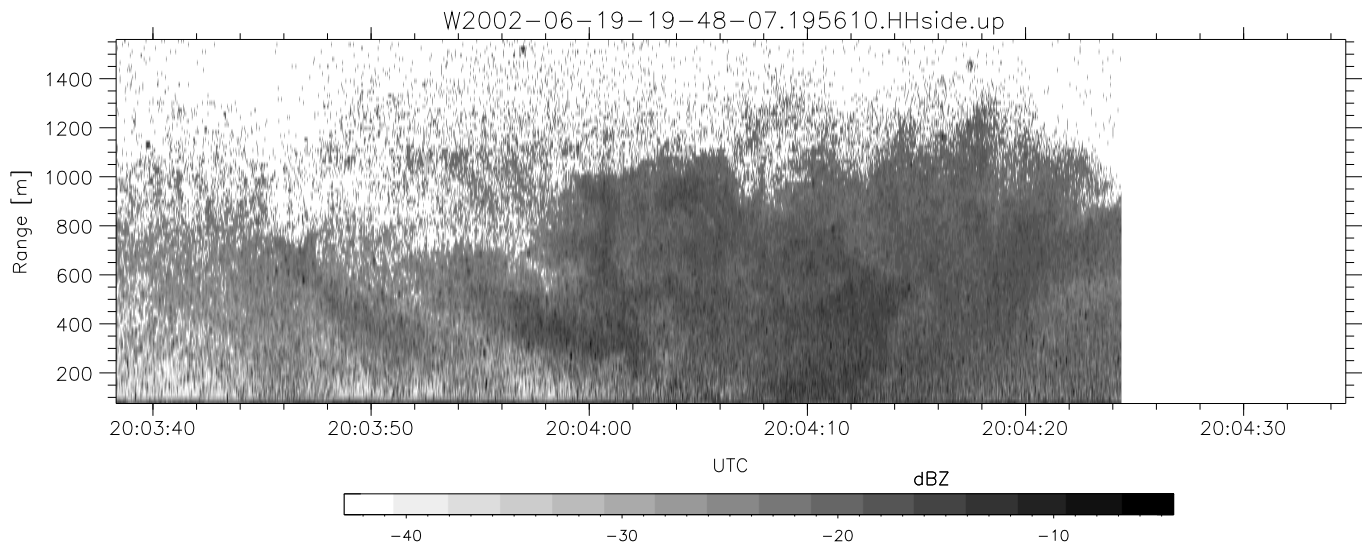
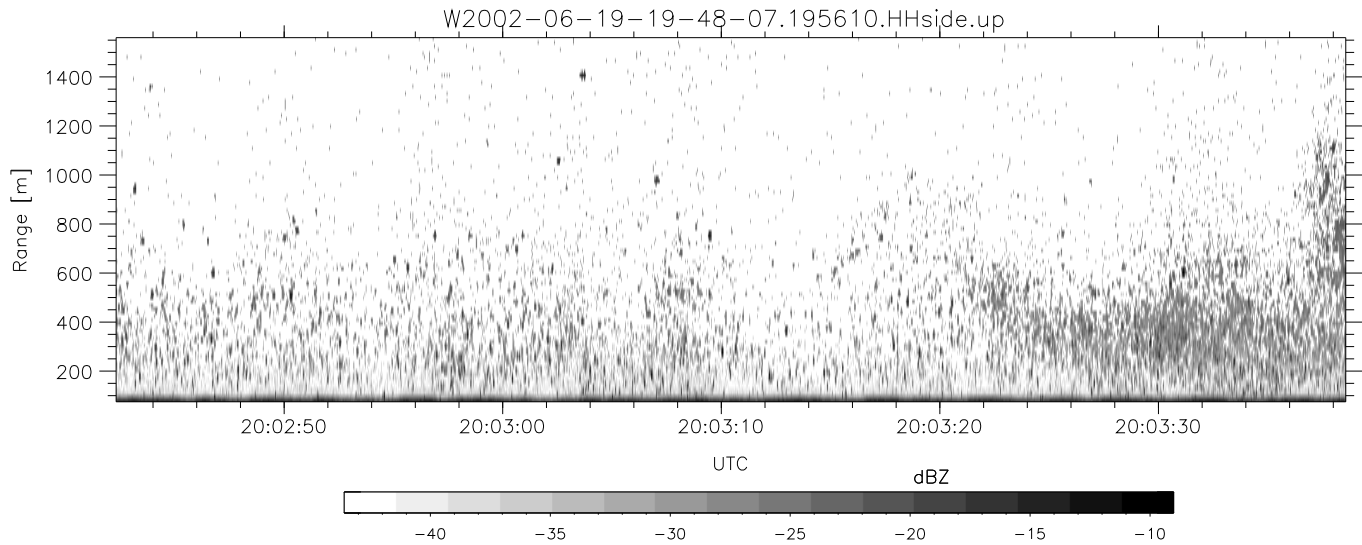
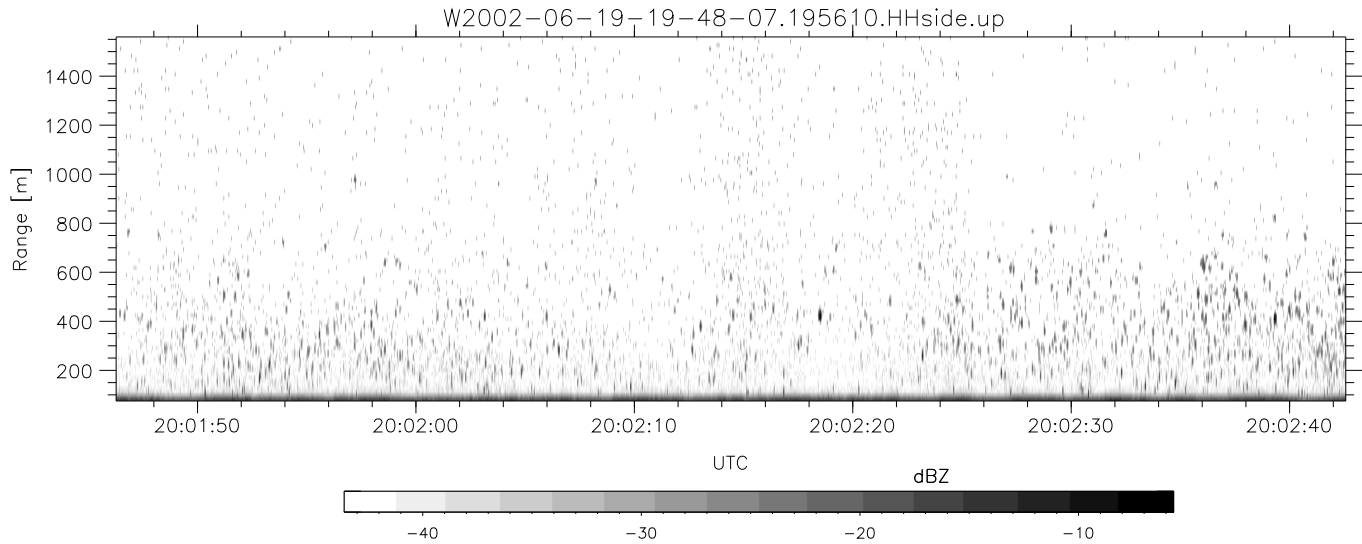
	Min	Max	Mean	Std	Varc%
hhN(dB)	-68.21	-60.49	-65.89	-72.07	24.1
vvN(dB)	-66.63	-59.47	-64.64	-70.80	24.2
hhL(dB)	-18.02	-1.93	-5.57	-8.90	46.5
vvL(dB)	-11.70	-0.20	-2.90	-6.92	39.6
ppN(m/s)	-12.72	12.41	0.09	4.11	
ppT(m/s)	-100.5	98.00	0.73	32.51	
hh/vv(dB)	-NaN	58.57	19.17	38.32	8225
vh/hh(dB)	-NaN	-28.60	-35.45	-33.88	143.
hv/vv(dB)	-NaN	-25.96	-63.60	-41.17	1750
hnjmp(dB)	-1.99	2.49	0.17	-8.40	13.9
vnjmp(dB)	-2.02	2.59	0.18	-8.36	14.0



IHOP 2002 (dual-antenna config, modes 1,3,4,7) Data (cal: 49.0,50.0)

W2002-06-19-19-48-07 - PPMAG4  
 IRIG:1,UTC: 19:47:56.47 to 20:08:03.81, Dur: 1207s  
 TimeLngth: 1207.35s, TimeInt: 28ms (34.6pps)  
 TimeCor=-13.0s, DSPDif(mn,min,mx):29,28,316  
 PPS(min,max,std): 25,36,2.19  
 Prof: 550 to 42269, NumProf(t/r): 41719/17069  
 ProcTime/Recs: 19:56:10-20:04:24/17069-34137  
 MxACQtime: 33ms; DRate: 193.4KB/s; Flags: 0, 0, 0  
 Pulse: 275ns, IFfilt: 5.0MHz; ppPol: HH HV VV  
 TxPol: HHVV, PRF: 20 10 20 10 kHz  
 Range: Delay 75m, Spacing 15m, Gates 100  
 Ave. Pulses: 84, Rng/Prof Aspect@90m/s: 5.8

	Min	Max	Mean	Std	Varc%
hhN(dB)	-68.21	-60.49	-65.89	-72.07	24.1
vvN(dB)	-66.63	-59.47	-64.64	-70.80	24.2
hhL(dB)	-18.02	-1.93	-5.57	-8.90	46.5
vvL(dB)	-11.70	-0.20	-2.90	-6.92	39.6
ppN(m/s)	-12.72	12.41	0.09	4.11	
ppT(m/s)	-100.5	98.00	0.73	32.51	
hh/vv(dB)	-NaN	58.57	19.17	38.32	8225
vh/hh(dB)	-NaN	-28.60	-35.45	-33.88	143.
hv/vv(dB)	-NaN	-25.96	-63.60	-41.17	1750
hnjmp(dB)	-1.99	2.49	0.17	-8.40	13.9
vnjmp(dB)	-2.02	2.59	0.18	-8.36	14.0



IHOP 2002 (dual-antenna config, modes 1,3,4,7) Data (cal: 49.0,50.0)

W2002-06-19-19-48-07 - PPMAG4  
 IRIG:1,UTC: 19:47:56.47 to 20:08:03.81, Dur: 1207s  
 TimeLngth: 1207.35s, TimeInt: 28ms (34.6pps)  
 TimeCor=-13.0s, DSPDif(mn,min,mx):29,28,316  
 PPS(min,max,std): 25,36,2.19  
 Prof: 550 to 42269, NumProf(t/r): 41719/17069  
 ProcTime/Recs: 19:56:10-20:04:24/17069-34137  
 MxACQtime: 33ms; DRate: 193.4KB/s; Flags: 0, 0, 0  
 Pulse: 275ns, IFfilt: 5.0MHz; ppPol: HH HV VV  
 TxPol: HHVV, PRF: 20 10 20 10 kHz  
 Range: Delay 75m, Spacing 15m, Gates 100  
 Ave. Pulses: 84, Rng/Prof Aspect@90m/s: 5.8

	Min	Max	Mean	Std	Varc%
hhN(dB)	-68.21	-60.49	-65.89	-72.07	24.1
vvN(dB)	-66.63	-59.47	-64.64	-70.80	24.2
hhL(dB)	-18.02	-1.93	-5.57	-8.90	46.5
vvL(dB)	-11.70	-0.20	-2.90	-6.92	39.6
ppN(m/s)	-12.72	12.41	0.09	4.11	
ppT(m/s)	-100.5	98.00	0.73	32.51	
hh/vv(dB)	-NaN	58.57	19.17	38.32	8225
vh/hh(dB)	-NaN	-28.60	-35.45	-33.88	143.
hv/vv(dB)	-NaN	-25.96	-63.60	-41.17	1750
hnjmp(dB)	-1.99	2.49	0.17	-8.40	13.9
vnjmp(dB)	-2.02	2.59	0.18	-8.36	14.0