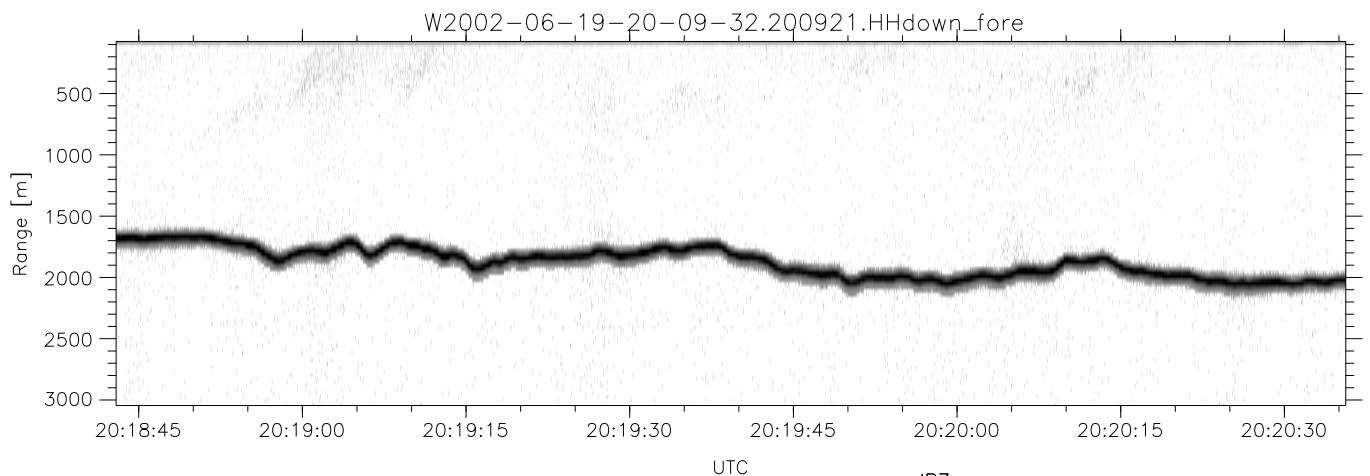
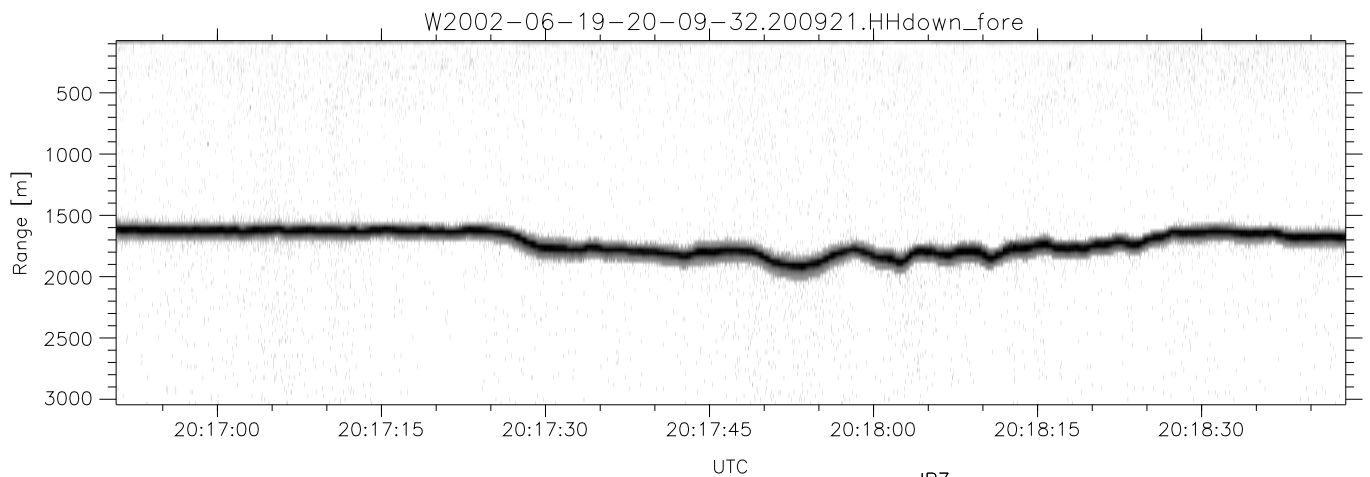
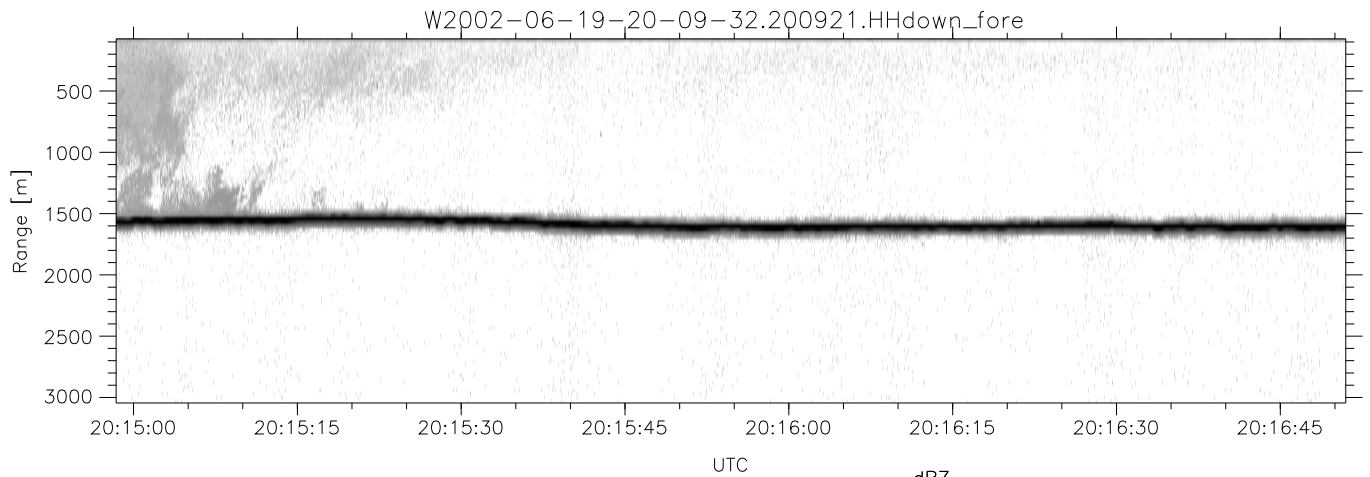


IHOP 2002 (dual-antenna config, modes 1,3,4,7) Data (cal: 55.0,50.0)

W2002-06-19-20-09-32 - PPMAG4  
 IRIG:1,UTC: 20:09:21.81 to 20:27:30.07, Dur: 1089s  
 TimeLngth: 1088.27s, TimeInt: 28ms (34.7pps)  
 TimeCor=-13.0s, DSPDif(mn,min,mx):28,28,353  
 PPS(min,max,std): 24,36,2.19  
 Prof: 613 to 38428, NumProf(t/r): 37815/34138  
 ProcTime/Recs: 20:09:21-20:25:44/0-34137  
 MxACQtime: 33ms; DRate: 194.5KB/s; Flags: 0, 0, 0  
 Pulse: 275ns, IFfilt: 5.0MHz; ppPol: HH HV VV  
 TxPol: HHVV, PRF: 20 10 20 10 kHz  
 Range: Delay 75m, Spacing 30m, Gates 100  
 Ave. Pulses: 84, Rng/Prof Aspect@90m/s: 11.6

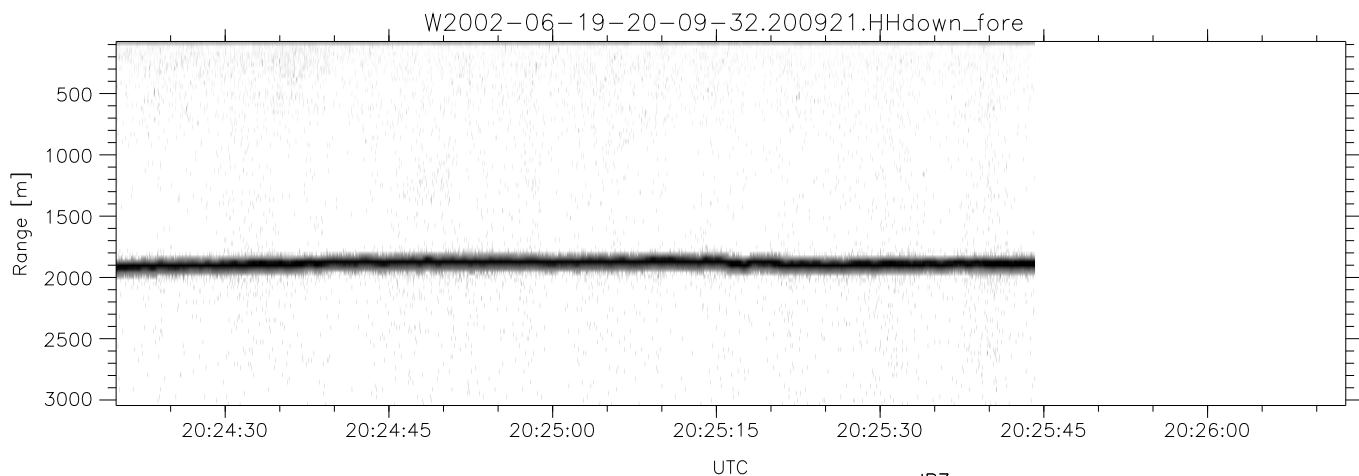
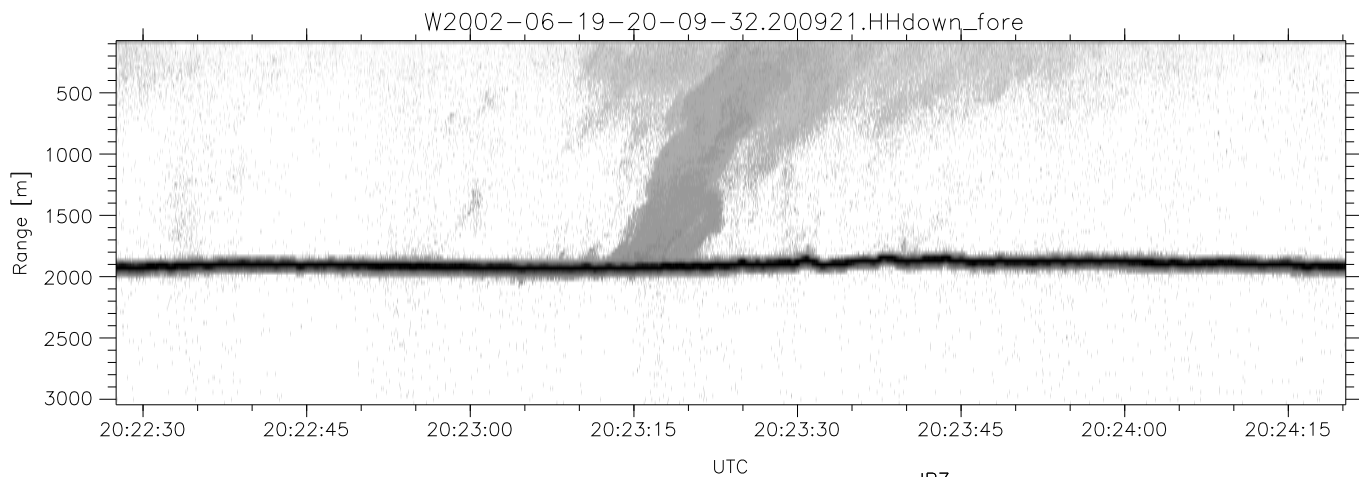
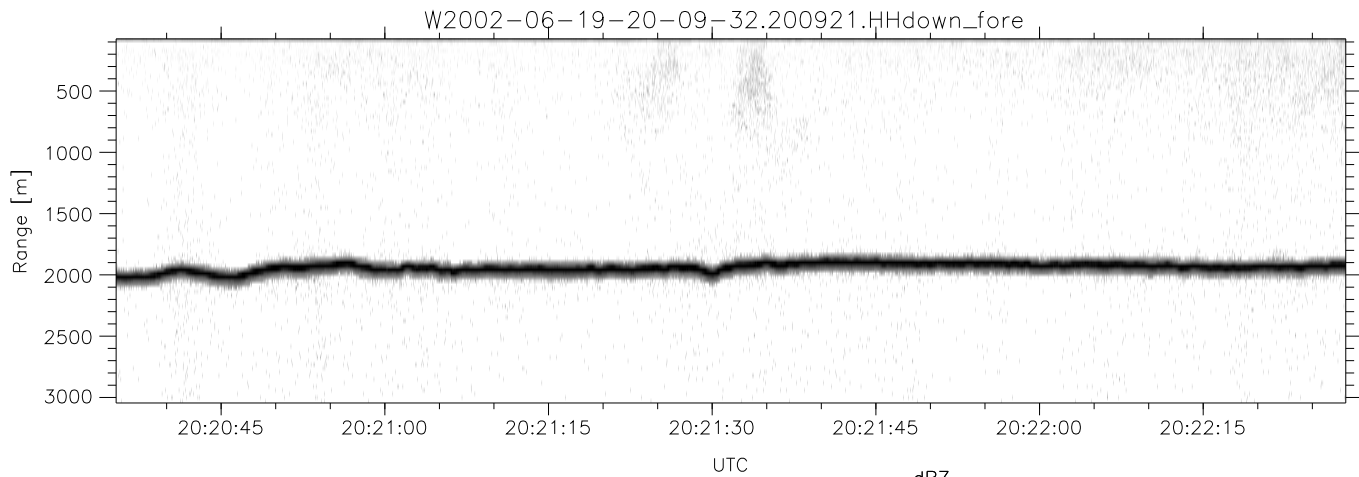
	Min	Max	Mean	Std	Varc%
hhN(dB)	-67.77	-64.27	-66.03	-76.04	10.0
vvN(dB)	-67.05	-63.26	-65.07	-75.03	10.1
hhL(dB)	-16.52	-4.52	-8.16	-13.99	26.1
vvL(dB)	-15.56	0.28	-4.03	-7.88	41.2
ppN(m/s)	-12.75	12.68	0.03	4.11	
ppT(m/s)	-100.7	100.20	0.24	32.48	
hh/vv(dB)	-NaN	99.39	-NaN	78.30	-497
vh/hh(dB)	-NaN	-28.57	-50.05	-40.73	856.
hv/vv(dB)	-NaN	-33.91	-52.32	-47.22	323.
hh/jmp(dB)	-2.26	2.43	0.17	-8.36	14.0
vv/jmp(dB)	-2.19	2.79	0.19	-8.34	14.0



IHOP 2002 (dual-antenna config, modes 1,3,4,7) Data (cal: 55.0,50.0)

W2002-06-19-20-09-32 - PPMAG4  
 IRIG:1,UTC: 20:09:21.81 to 20:27:30.07, Dur: 1089s  
 TimeLngth: 1088.27s, TimeInt: 28ms (34.7pps)  
 TimeCor=-13.0s, DSPDif(mn,min,mx):28,28,353  
 PPS(min,max,std): 24,36,2.19  
 Prof: 613 to 38428, NumProf(t/r): 37815/34138  
 ProcTime/Recs: 20:09:21-20:25:44/0-34137  
 MxAcQtime: 33ms; DRate: 194.5KB/s; Flags: 0, 0, 0  
 Pulse: 275ns, IFfilt: 5.0MHz; ppPol: HH HV VV  
 TxPol: HHVV, PRF: 20 10 20 10 kHz  
 Range: Delay 75m, Spacing 30m, Gates 100  
 Ave. Pulses: 84, Rng/Prof Aspect@90m/s: 11.6

	Min	Max	Mean	Std	Varc%
hhN(dB)	-67.77	-64.27	-66.03	-76.04	10.0
vvN(dB)	-67.05	-63.26	-65.07	-75.03	10.1
hhL(dB)	-16.52	-4.52	-8.16	-13.99	26.1
vvL(dB)	-15.56	0.28	-4.03	-7.88	41.2
ppN(m/s)	-12.75	12.68	0.03	4.11	
ppT(m/s)	-100.7	100.20	0.24	32.48	
hh/vv(dB)	-NaN	99.39	-NaN	78.30	-497
vh/hh(dB)	-NaN	-28.57	-50.05	-40.73	856.
hv/vv(dB)	-NaN	-33.91	-52.32	-47.22	323.
hh/jmp(dB)	-2.26	2.43	0.17	-8.36	14.0
vv/jmp(dB)	-2.19	2.79	0.19	-8.34	14.0



IHOP 2002 (dual-antenna config, modes 1,3,4,7) Data (cal: 55.0,50.0)

W2002-06-19-20-09-32 - PPMAG4  
 IRIG:1,UTC: 20:09:21.81 to 20:27:30.07, Dur: 1089s  
 TimeLngth: 1088.27s, TimeInt: 28ms (34.7pps)  
 TimeCor=-13.0s, DSPDif(mn,min,mx):28,28,353  
 PPS(min,max,std): 24,36,2.19  
 Prof: 613 to 38428, NumProf(t/r): 37815/34138  
 ProcTime/Recs: 20:09:21-20:25:44/0-34137  
 MxACQtime: 33ms; DRate: 194.5KB/s; Flags: 0, 0, 0  
 Pulse: 275ns, IFfilt: 5.0MHz; ppPol: HH HV VV  
 TxPol: HHVV, PRF: 20 10 20 10 kHz  
 Range: Delay 75m, Spacing 30m, Gates 100  
 Ave. Pulses: 84, Rng/Prof Aspect@90m/s: 11.6

	Min	Max	Mean	Std	Varc%
hhN(dB)	-67.77	-64.27	-66.03	-76.04	10.0
vvN(dB)	-67.05	-63.26	-65.07	-75.03	10.1
hhL(dB)	-16.52	-4.52	-8.16	-13.99	26.1
vvL(dB)	-15.56	0.28	-4.03	-7.88	41.2
ppN(m/s)	-12.75	12.68	0.03	4.11	
ppT(m/s)	-100.7	100.20	0.24	32.48	
hh/vv(dB)	-NaN	99.39	-NaN	78.30	-497
vh/hh(dB)	-NaN	-28.57	-50.05	-40.73	856.
hv/vv(dB)	-NaN	-33.91	-52.32	-47.22	323.
hnjmp(dB)	-2.26	2.43	0.17	-8.36	14.0
vnjmp(dB)	-2.19	2.79	0.19	-8.34	14.0