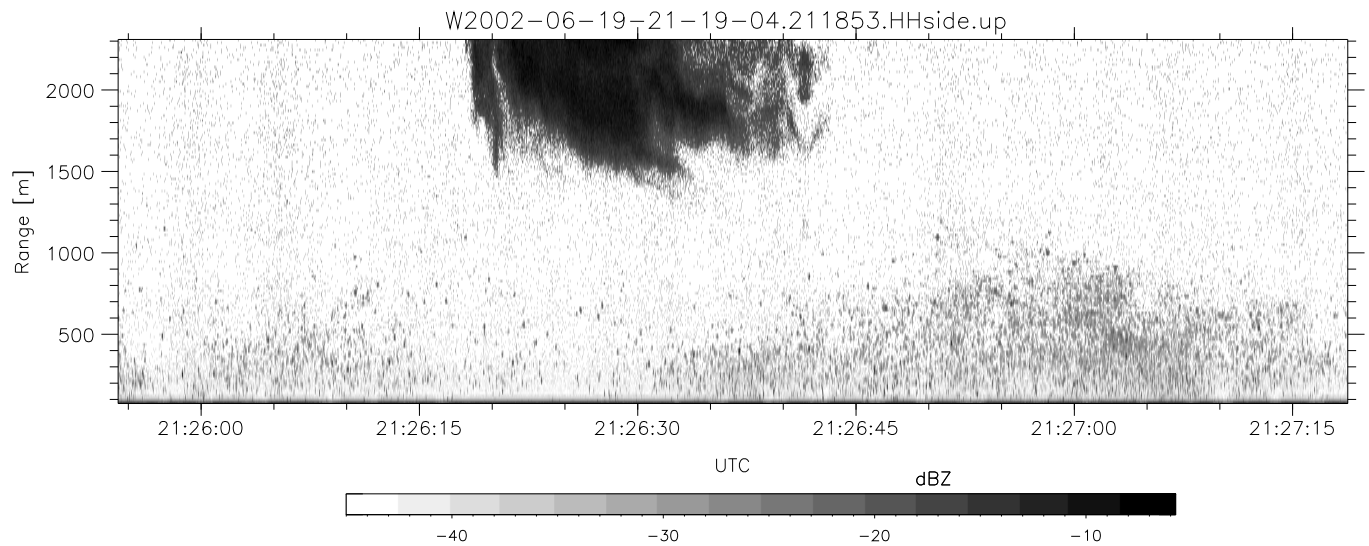
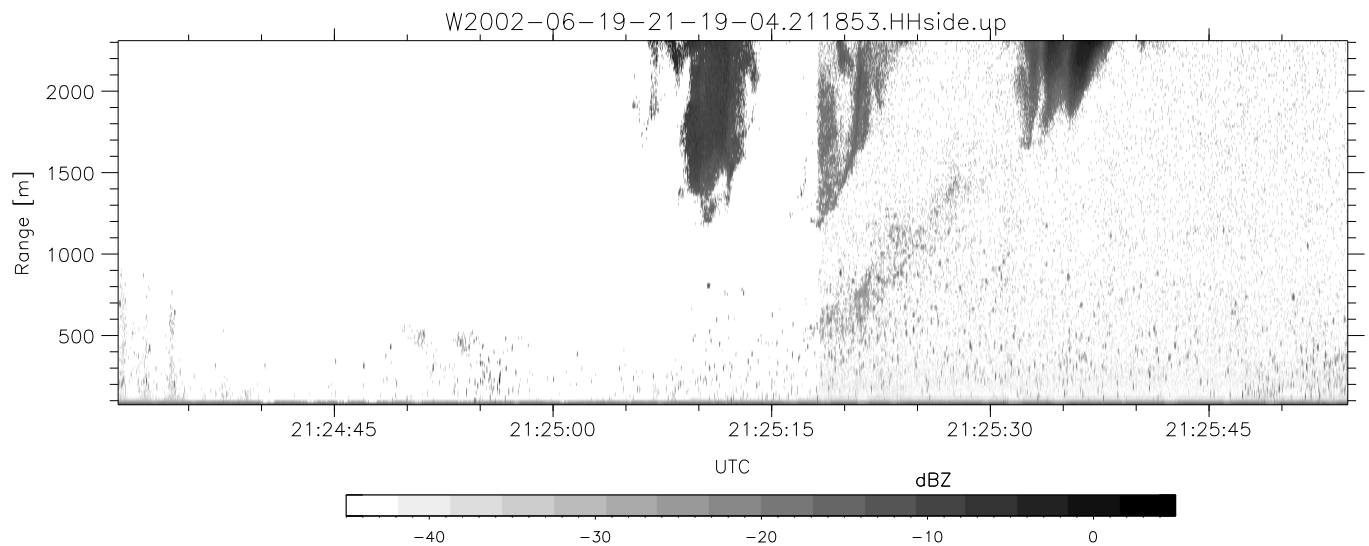
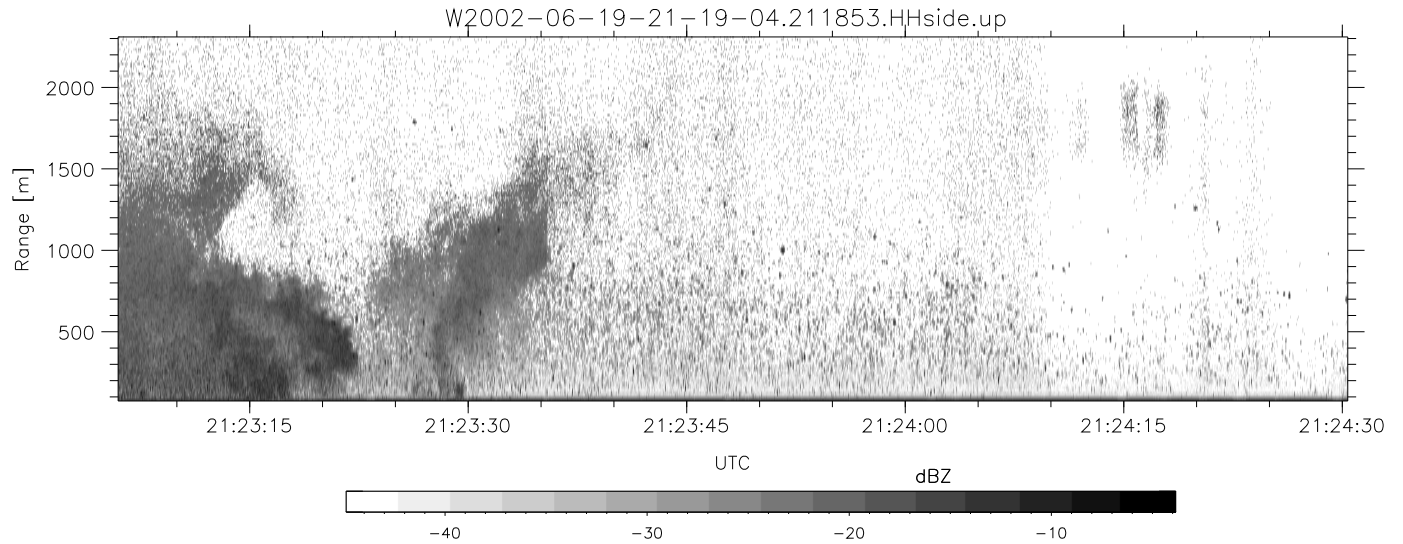


IHOP 2002 (dual-antenna config, modes 1,3,4,7) Data (cal: 49.0,50.0)

W2002-06-19-21-19-04 - SPPMAG  
 IRIG:1,UTC: 21:18:53.33 to 21:30:57.66, Dur: 724s  
 TimeLngth: 724.33s, TimeInt: 24ms (40.6pps)  
 TimeCor=-13.0s, DSPDif(mn,min,mx):25,20,267  
 PPS(min,max,std): 21,42,2.61  
 Prof: 473 to 29846, NumProf(t/r): 29373/29373  
 MxACQtime: 17ms; DRate: 97.1KB/s; Flags: 0, 0, 0  
 Pulse: 275ns, IFfilt: 5.0MHz; ppPol: HH  
 TxPol: H, PRF: 20 kHz  
 Range: Delay 75m, Spacing 15m, Gates 150  
 Ave. Pulses: 348, Rng/Prof Aspect@90m/s: 6.8

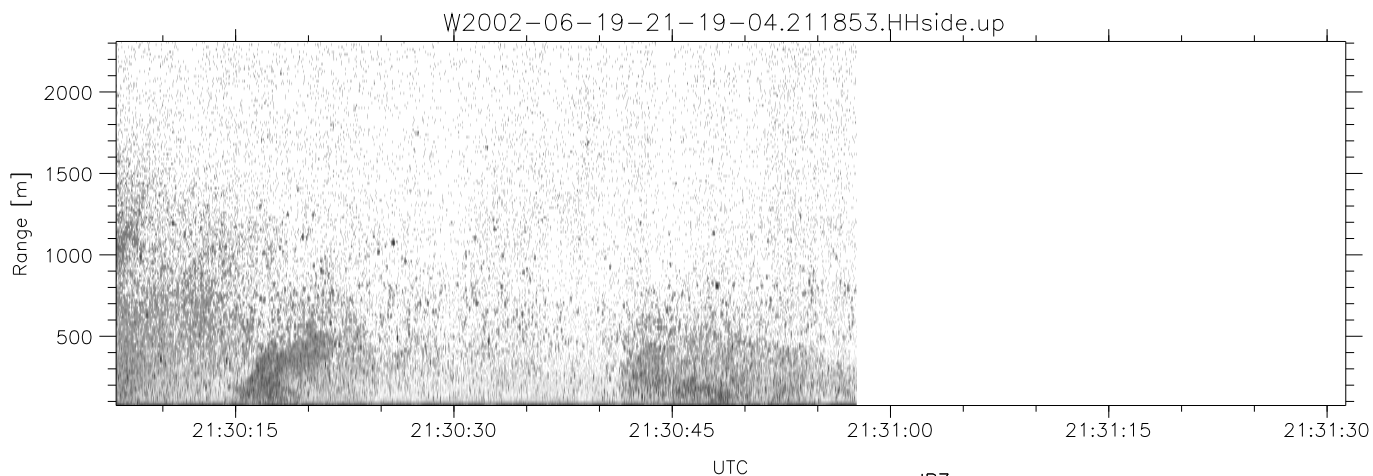
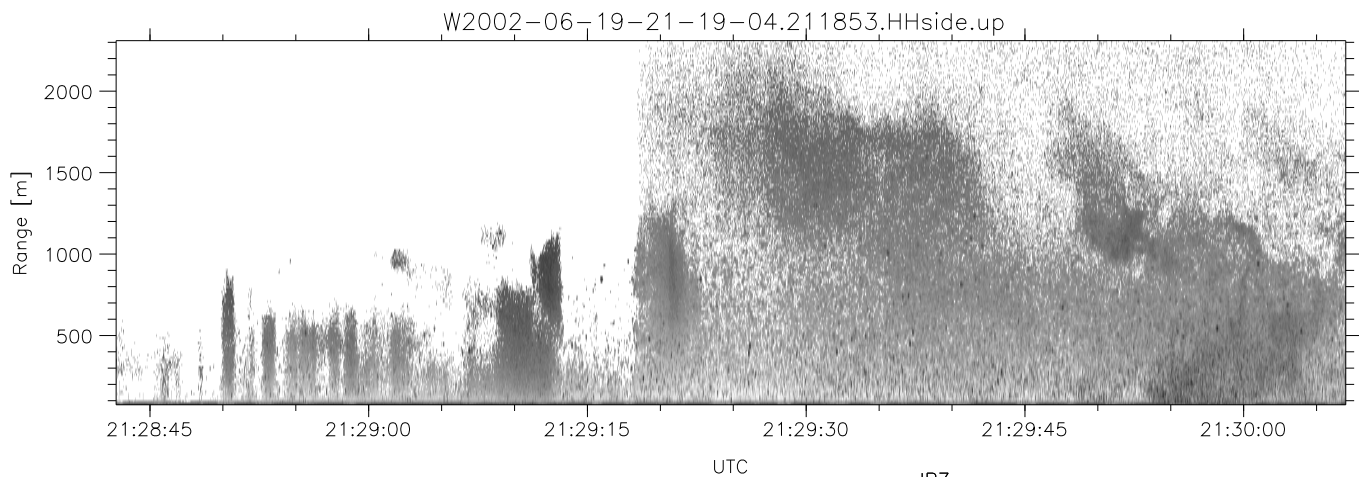
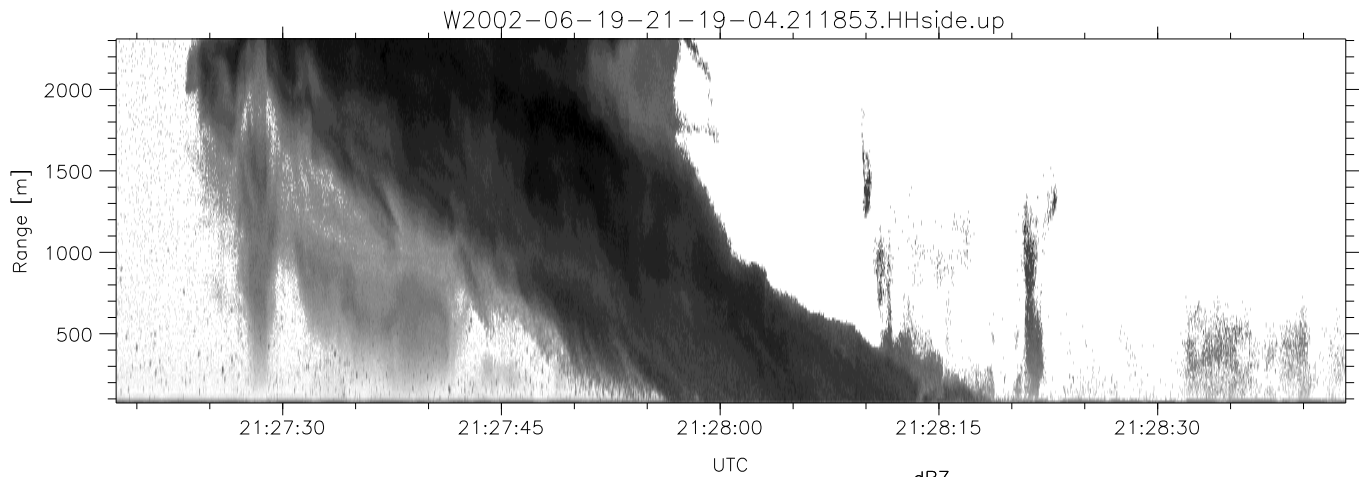
	Min	Max	Mean	Std	Varc%
hhN(dB)	-67.31	-51.12	-63.14	-61.32	151.
vvN(dB)	-66.27	-64.45	-65.32	-78.19	5.2
hhL(dB)	-17.94	-1.80	-4.53	-9.37	32.8
vhL(dB)	-23.85	-5.68	-11.06	-14.76	42.7
ppN(m/s)	-15.80	15.80	0.75	8.07	
ppT(m/s)	-0.03	0.02	-0.00	0.01	
vh/hh(dB)	-NaN	-5.59	-21.73	-16.77	313.
hnjmp(dB)	-3.09	3.20	0.16	-9.89	9.9
vnjmp(dB)	-1.07	1.62	0.15	-11.43	7.0



IHOP 2002 (dual-antenna config, modes 1,3,4,7) Data (cal: 49.0,50.0)

W2002-06-19-21-19-04 - SPPMAG  
 IRIG:1,UTC: 21:18:53.33 to 21:30:57.66, Dur: 724s  
 TimeLngth: 724.33s, TimeInt: 24ms (40.6pps)  
 TimeCor=-13.0s, DSPDif(mn,min,mx):25,20,267  
 PPS(min,max,std): 21,42,2.61  
 Prof: 473 to 29846, NumProf(t/r): 29373/29373  
 MxACQtime: 17ms; DRate: 97.1KB/s; Flags: 0, 0, 0  
 Pulse: 275ns, IFfilt: 5.0MHz; ppPol: HH  
 TxPol: H, PRF: 20 kHz  
 Range: Delay 75m, Spacing 15m, Gates 150  
 Ave. Pulses: 348, Rng/Prof Aspect@90m/s: 6.8

	Min	Max	Mean	Std	Varc%
hhN(dB)	-67.31	-51.12	-63.14	-61.32	151.
vvN(dB)	-66.27	-64.45	-65.32	-78.19	5.2
hhL(dB)	-17.94	-1.80	-4.53	-9.37	32.8
vhL(dB)	-23.85	-5.68	-11.06	-14.76	42.7
ppN(m/s)	-15.80	15.80	0.75	8.07	
ppT(m/s)	-0.03	0.02	-0.00	0.01	
vh/hh(dB)	-NaN	-5.59	-21.73	-16.77	313.
hnjmp(dB)	-3.09	3.20	0.16	-9.89	9.9
vnjmp(dB)	-1.07	1.62	0.15	-11.43	7.0



IHOP 2002 (dual-antenna config, modes 1,3,4,7) Data (cal: 49.0,50.0)

W2002-06-19-21-19-04 - SPPMAG  
 IRIG:1,UTC: 21:18:53.33 to 21:30:57.66, Dur: 724s  
 TimeLngth: 724.33s, TimeInt: 24ms (40.6pps)  
 TimeCor=-13.0s, DSPDif(mn,min,mx):25,20,267  
 PPS(min,max,std): 21,42,2.61  
 Prof: 473 to 29846, NumProf(t/r): 29373/29373  
 MxACQtime: 17ms; DRate: 97.1KB/s; Flags: 0, 0, 0  
 Pulse: 275ns, IFfilt: 5.0MHz; ppPol: HH  
 TxPol: H, PRF: 20 kHz  
 Range: Delay 75m, Spacing 15m, Gates 150  
 Ave. Pulses: 348, Rng/Prof Aspect@90m/s: 6.8

	Min	Max	Mean	Std	Varc%
hhN(dB)	-67.31	-51.12	-63.14	-61.32	151.
vvN(dB)	-66.27	-64.45	-65.32	-78.19	5.2
hhL(dB)	-17.94	-1.80	-4.53	-9.37	32.8
vhL(dB)	-23.85	-5.68	-11.06	-14.76	42.7
ppN(m/s)	-15.80	15.80	0.75	8.07	
ppT(m/s)	-0.03	0.02	-0.00	0.01	
vh/hh(dB)	-NaN	-5.59	-21.73	-16.77	313.
hnjmp(dB)	-3.09	3.20	0.16	-9.89	9.9
vnjmp(dB)	-1.07	1.62	0.15	-11.43	7.0