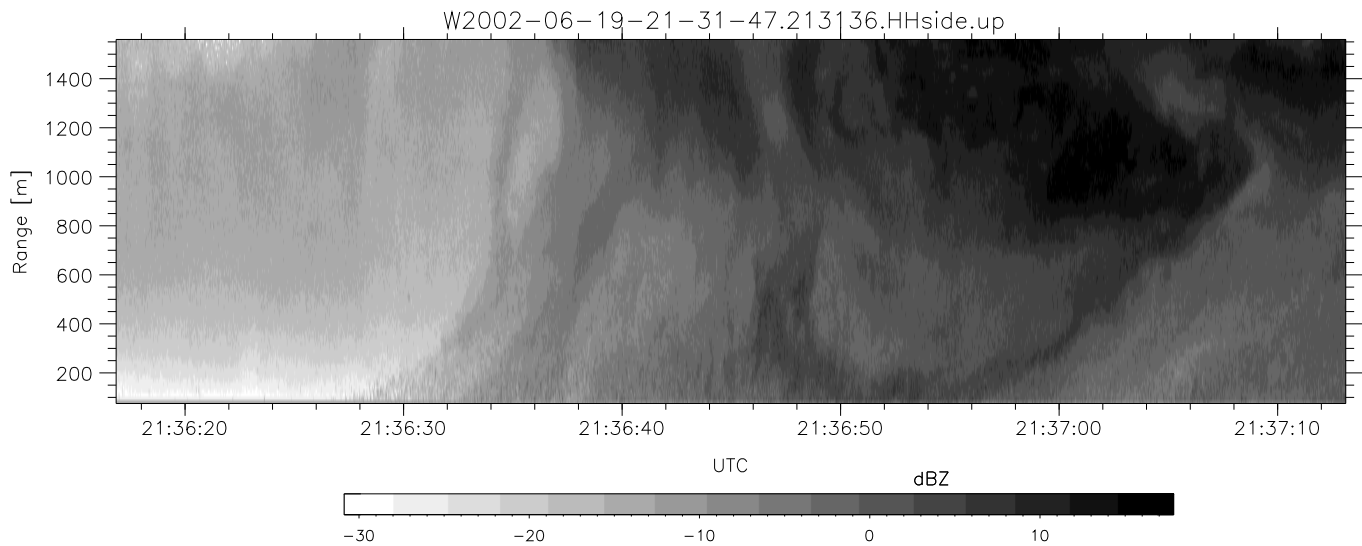
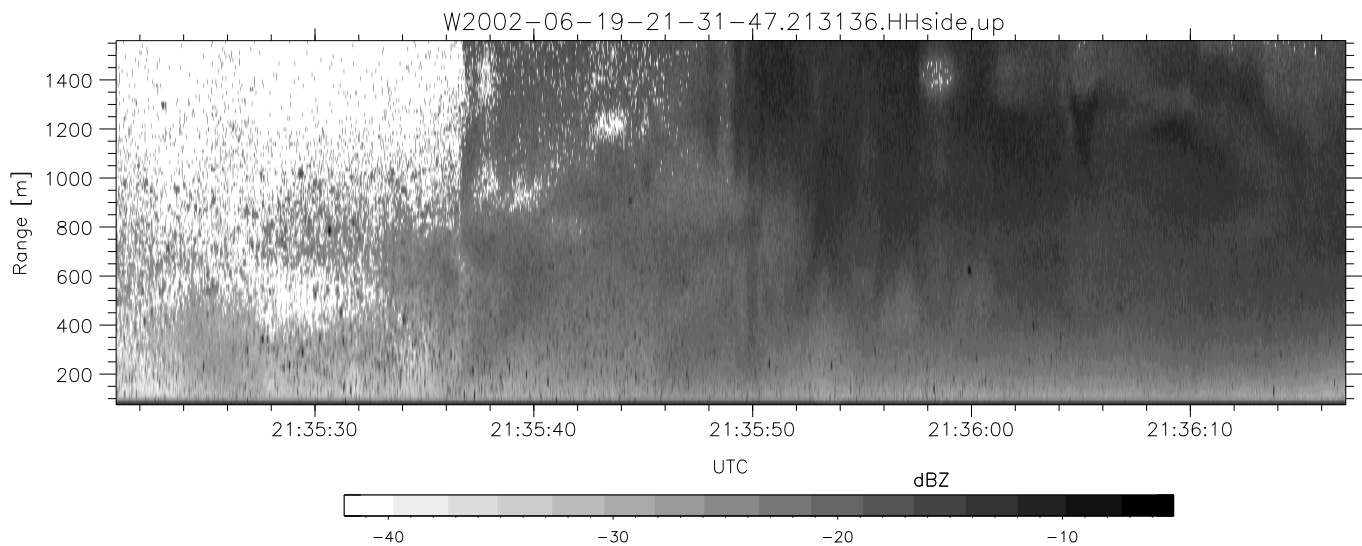
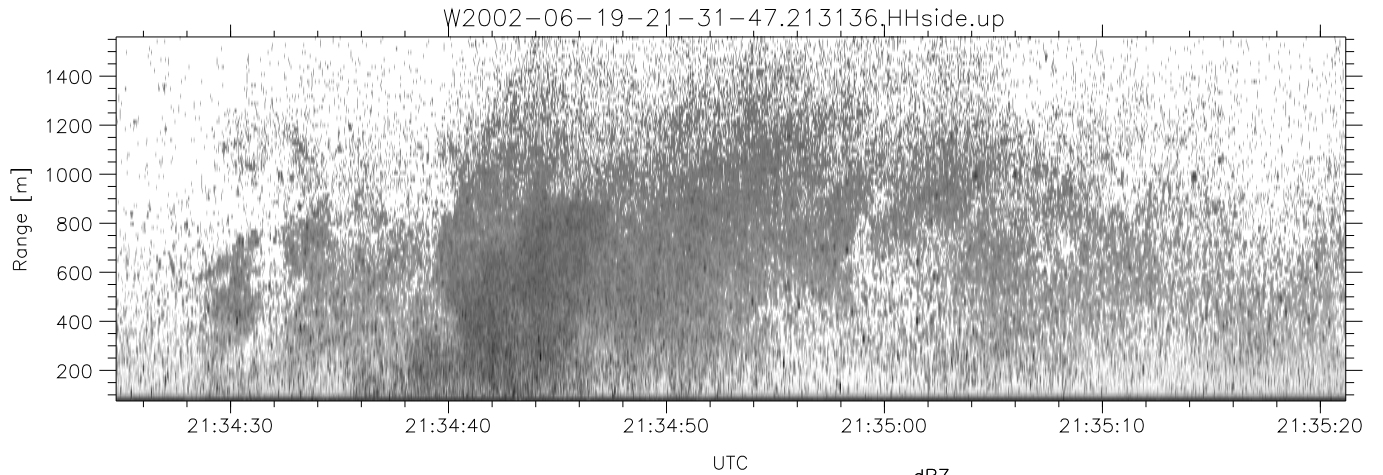


IHOP 2002 (dual-antenna config, modes 1,3,4,7) Data (cal: 49.0,50.0)

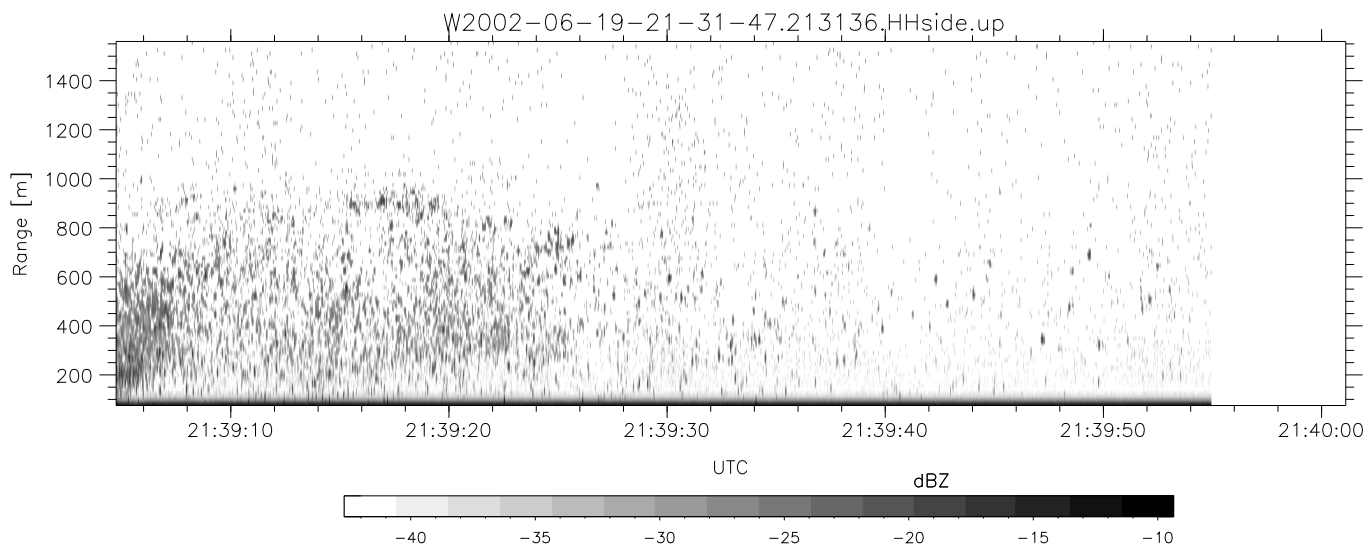
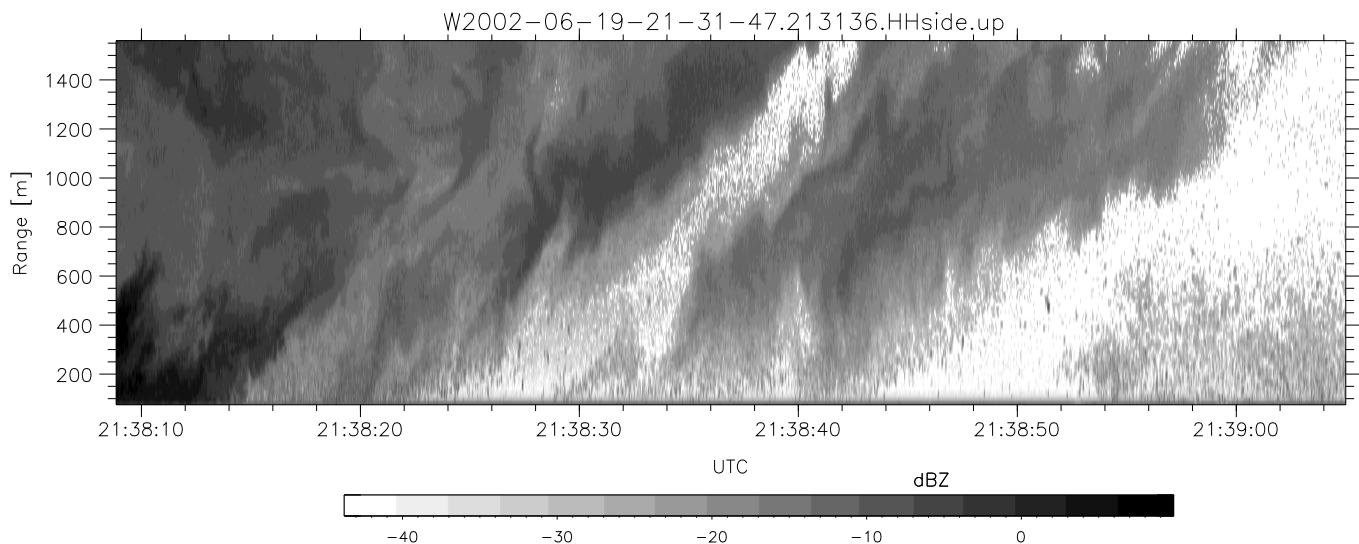
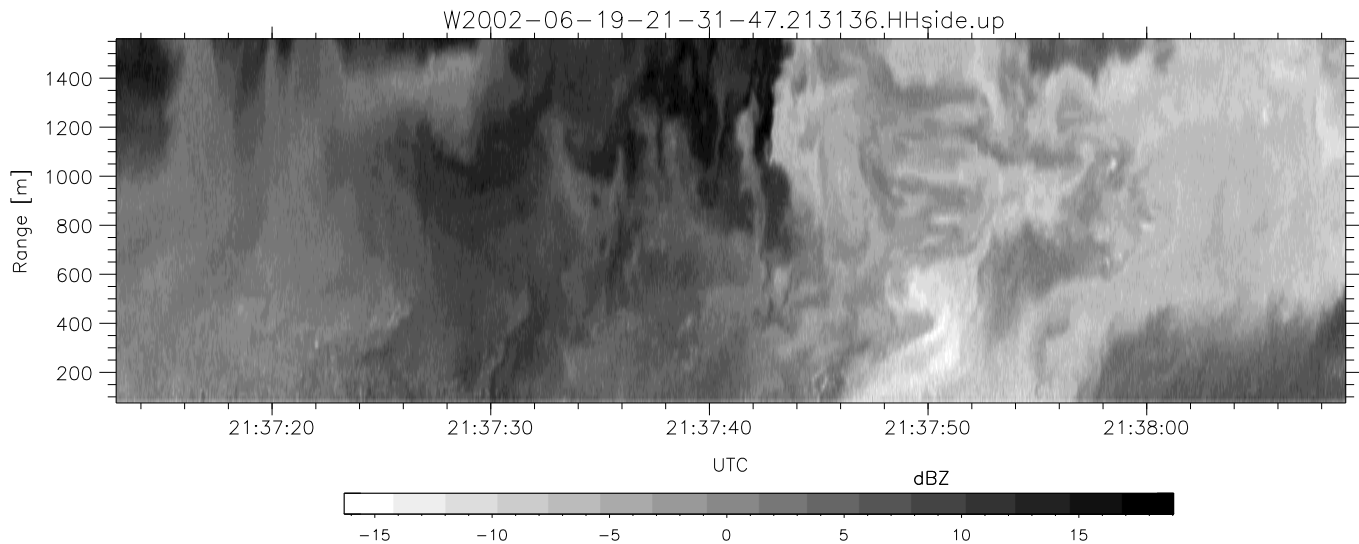
W2002-06-19-21-31-47 - PPMAG4
 IRIG:1,UTC: 21:31:36.67 to 21:41:49.85, Dur: 613s
 TimeLngth: 613.17s, TimeInt: 29ms (34.3pps)
 TimeCor=-13.0s, DSPDif(mn,min,mx):29,28,473
 PPS(min,max,std): 19,36,2.32
 Prof: 472 to 21480, NumProf(t/r): 21008/17069
 ProcTime/Recs: 21:31:36-21:39:54/0-17068
 MxACQtime: 33ms; DRate: 191.8KB/s; Flags: 0, 0, 0
 Pulse: 275ns, IFfilt: 5.0MHz; ppPol: HH HV VV
 TxPol: HHVV, PRF: 20 10 20 10 kHz
 Range: Delay 75m, Spacing 15m, Gates 100
 Ave. Pulses: 84, Rng/Prof Aspect@90m/s: 5.7

	Min	Max	Mean	Std	Varc%
hhN (dB)	-68.69	-64.52	-66.35	-75.83	11.3
vvN (dB)	-67.15	-63.50	-65.34	-75.24	10.2
hhL (dB)	-11.62	-2.15	-3.15	-11.92	13.3
vvL (dB)	-15.79	-1.01	-4.05	-9.56	28.1
ppN (m/s)	-12.20	12.64	0.03	4.17	
ppT (m/s)	-96.38	99.84	0.26	32.95	
hh/vv (dB)	-NaN	79.66	-NaN	64.35	-640
vh/hh (dB)	-NaN	-16.26	-38.21	-31.19	504.
hv/vv (dB)	-NaN	-29.00	-44.58	-40.22	272.
hnjmp (dB)	-2.58	2.36	-0.10	-8.60	14.1
vnjmp (dB)	-2.68	2.10	-0.11	-8.60	14.2



IHOP 2002 (dual-antenna config, modes 1,3,4,7) Data (cal: 49.0,50.0)

	Min	Max	Mean	Std	Varc%	
W2002-06-19-21-31-47 - PPMAG4						
IRIG:1,UTC: 21:31:36.67 to 21:41:49.85, Dur: 613s	hhN (dB)	-68.69	-64.52	-66.35	-75.83	11.3
TimeLngth: 613.17s, TimeInt: 29ms (34.3pps)	vvN (dB)	-67.15	-63.50	-65.34	-75.24	10.2
TimeCor=-13.0s, DSPDif(mn,min,mx):29,28,473	hhL (dB)	-11.62	-2.15	-3.15	-11.92	13.3
PPS(min,max,std): 19,36,2.32	vvL (dB)	-15.79	-1.01	-4.05	-9.56	28.1
Prof: 472 to 21480, NumProf(t/r): 21008/17069	ppN (m/s)	-12.20	12.64	0.03	4.17	
ProcTime/Recs: 21:31:36-21:39:54/0-17068	ppT (m/s)	-96.38	99.84	0.26	32.95	
MxACQtime: 33ms; DRate: 191.8KB/s; Flags: 0, 0, 0	hh/vv (dB)	-NaN	79.66	-NaN	64.35	-640
Pulse: 275ns, IFilt: 5.0MHz; ppPol: HH HV VV	vh/hh (dB)	-NaN	-16.26	-38.21	-31.19	504.
TxPol: HHVV, PRF: 20 10 20 10 kHz	hv/vv (dB)	-NaN	-29.00	-44.58	-40.22	272.
Range: Delay 75m, Spacing 15m, Gates 100	hn_jmp (dB)	-2.58	2.36	-0.10	-8.60	14.1
Ave. Pulses: 84, Rng/Prof Aspect@90m/s: 5.7	vn_jmp (dB)	-2.68	2.10	-0.11	-8.60	14.2



IHOP 2002 (dual-antenna config, modes 1,3,4,7) Data (cal: 49.0,50.0)

W2002-06-19-21-31-47 - PPMAG4
 IRIG:1,UTC: 21:31:36.67 to 21:41:49.85, Dur: 613s
 TimeLngth: 613.17s, TimeInt: 29ms (34.3pps)
 TimeCor=-13.0s, DSPDif(mn,min,mx):29,28,473
 PPS(min,max,std): 19,36,2.32
 Prof: 472 to 21480, NumProf(t/r): 21008/17069
 ProcTime/Recs: 21:31:36-21:39:54/0-17068
 MxACQtime: 33ms; DRate: 191.8KB/s; Flags: 0, 0, 0
 Pulse: 275ns, IFfilt: 5.0MHz; ppPol: HH HV VV
 TxPol: HHVV, PRF: 20 10 20 10 kHz
 Range: Delay 75m, Spacing 15m, Gates 100
 Ave. Pulses: 84, Rng/Prof Aspect@90m/s: 5.7

	Min	Max	Mean	Std	Varc%
hhN(dB)	-68.69	-64.52	-66.35	-75.83	11.3
vvN(dB)	-67.15	-63.50	-65.34	-75.24	10.2
hhL(dB)	-11.62	-2.15	-3.15	-11.92	13.3
vvL(dB)	-15.79	-1.01	-4.05	-9.56	28.1
ppN(m/s)	-12.20	12.64	0.03	4.17	
ppT(m/s)	-96.38	99.84	0.26	32.95	
hh/vv(dB)	-NaN	79.66	-NaN	64.35	-640
vh/hh(dB)	-NaN	-16.26	-38.21	-31.19	504.
hv/vv(dB)	-NaN	-29.00	-44.58	-40.22	272.
hnjmp(dB)	-2.58	2.36	-0.10	-8.60	14.1
vnjmp(dB)	-2.68	2.10	-0.11	-8.60	14.2