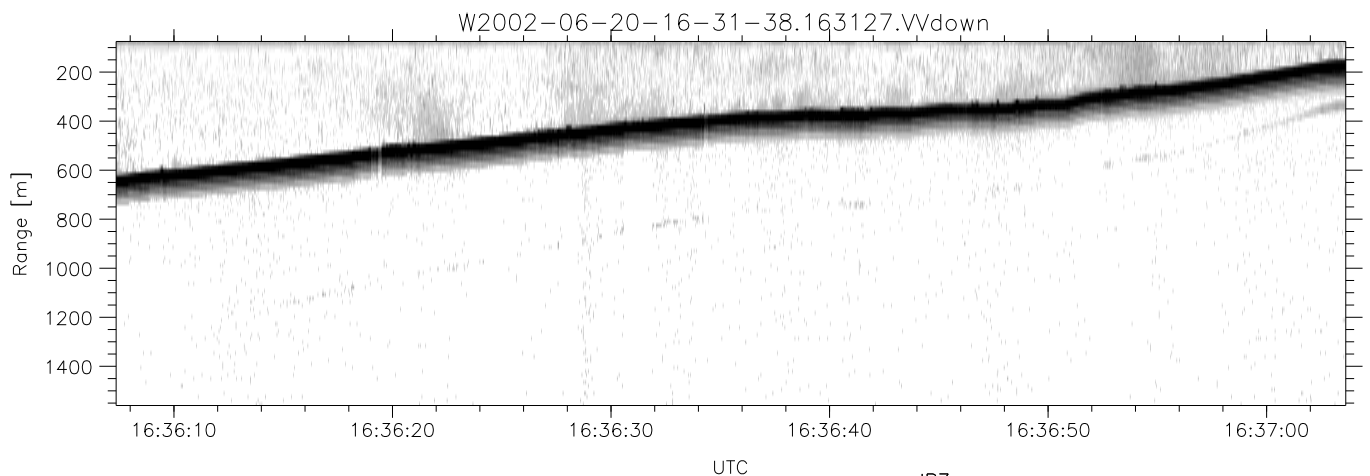
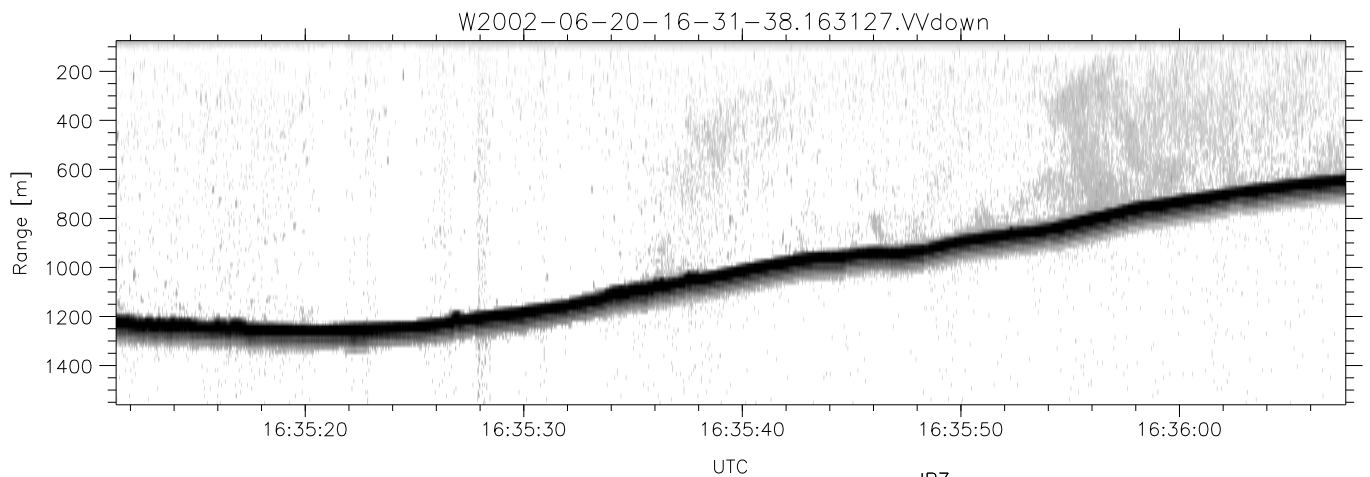
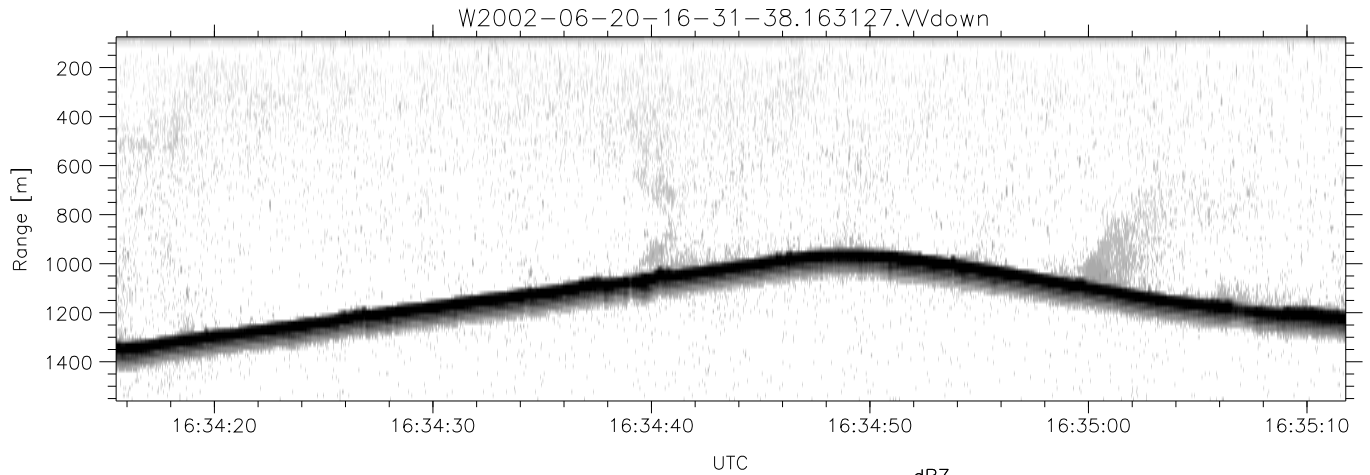


IHOP 2002 (dual-antenna config, modes 1,3,4,7) Data (cal: 49.0,50.0)

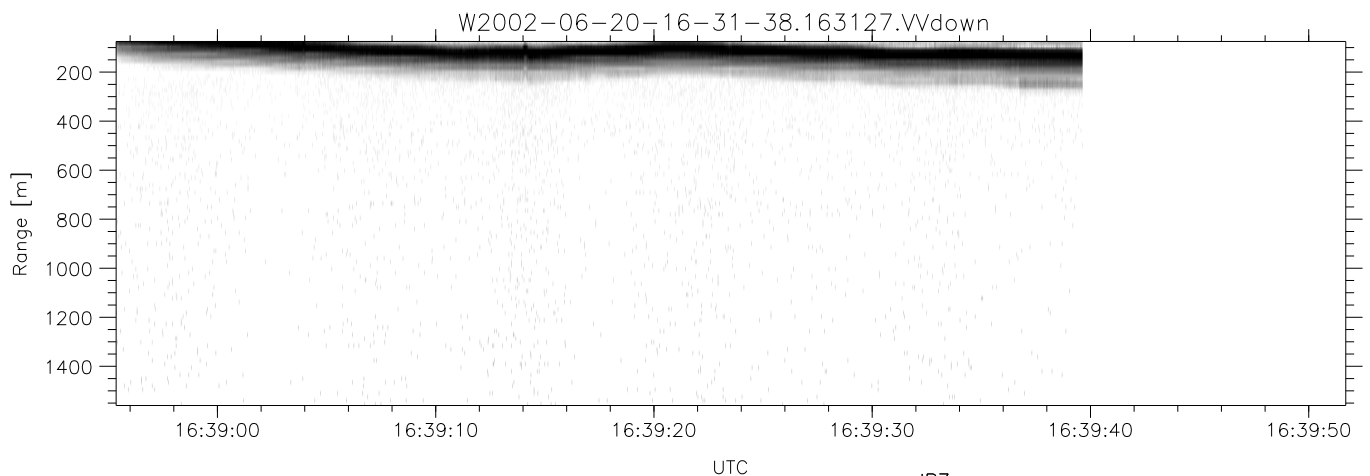
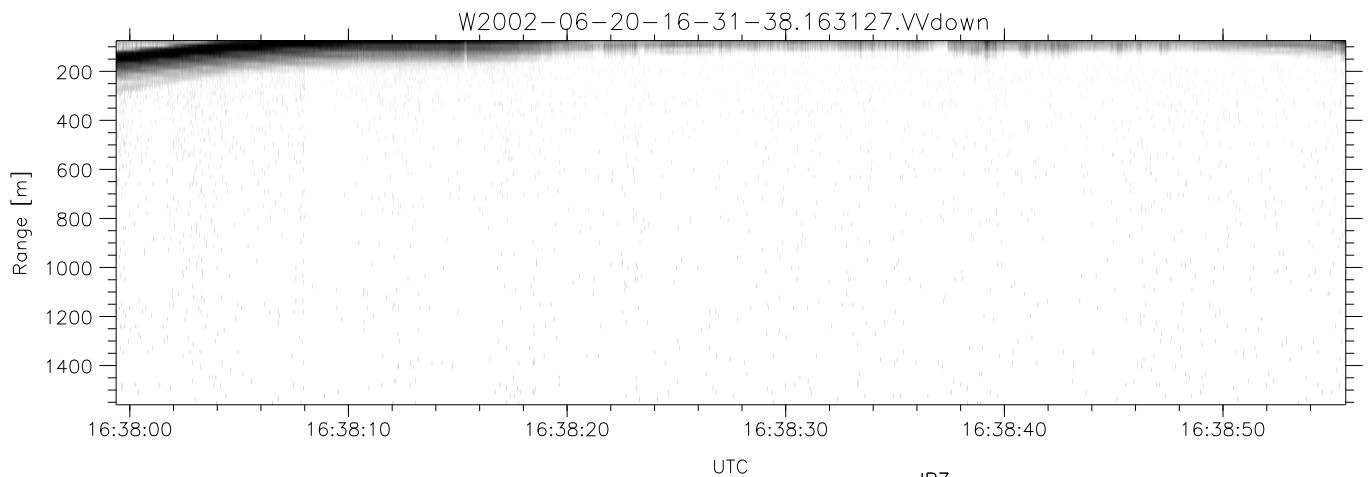
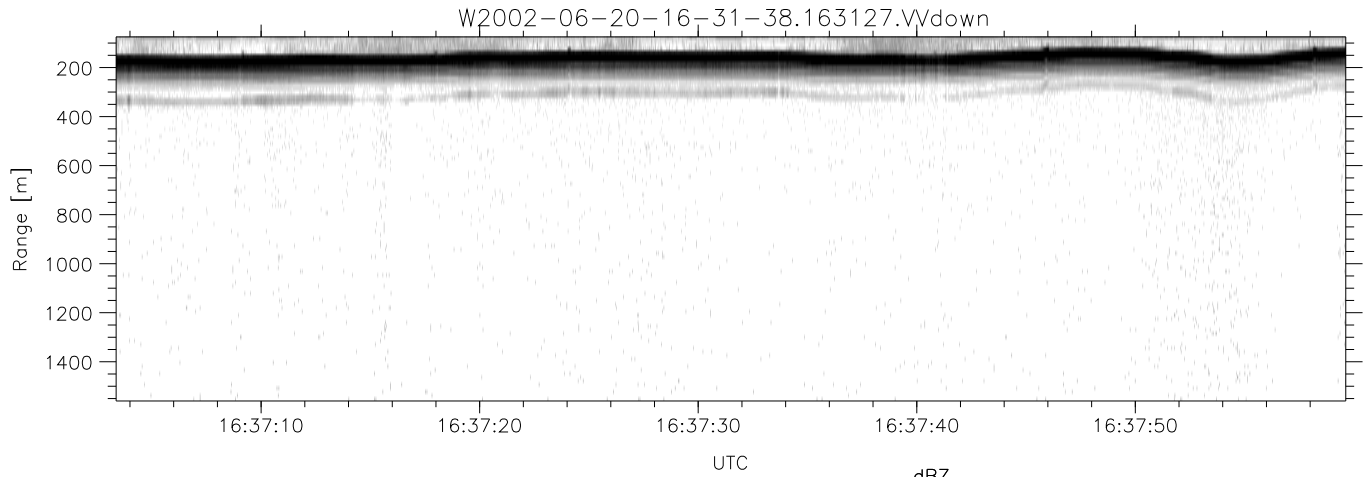
	Min	Max	Mean	Std	Varc%	
W2002-06-20-16-31-38 - PPMAG4						
IRIG:1,UTC: 16:31:27.42 to 17:06:34.43, Dur: 2107s	hhN (dB)	-67.21	-62.51	-65.49	-74.70	12.0
TimeLngth: 2107.01s, TimeInt: 28ms (34.7pps)	vvN (dB)	-66.44	-61.90	-64.54	-74.01	11.3
TimeCor=-13.0s, DSPDif(mn,min,mx):28,28,341	hhL (dB)	-16.99	-1.98	-5.71	-8.34	54.5
PPS(min,max,std): 17,36,2.27	vvL (dB)	-15.56	0.42	-4.73	-6.43	67.5
Prof: 902 to 73956, NumProf(t/r): 73054/17069	ppN (m/s)	-12.51	12.20	-0.11	4.08	
ProcTime/Recs: 16:31:27-16:39:39/0-17068	ppT (m/s)	-98.84	96.36	-0.89	32.23	
MxAcQtime: 33ms; DRate: 194.1KB/s; Flags: 0, 0, 0	hh/vv (dB)	-NaN	54.73	16.79	34.39	5759
Pulse: 275ns, IFfilt: 5.0MHz; ppPol: HH HV VV	vh/hh (dB)	-43.58	2.86	-5.55	-1.99	227.
TxPol: HHVV, PRF: 20 10 20 10 kHz	hv/vv (dB)	-NaN	-15.13	-40.27	-30.22	1010
Range: Delay 75m, Spacing 15m, Gates 100	hn_jmp (dB)	-2.16	1.95	-0.08	-8.64	13.9
Ave. Pulses: 84, Rng/Prof Aspect@90m/s: 5.8	vn_jmp (dB)	-2.49	2.07	-0.07	-8.59	14.1



IHOP 2002 (dual-antenna config, modes 1,3,4,7) Data (cal: 49.0,50.0)

W2002-06-20-16-31-38 - PPMAG4
 IRIG:1,UTC: 16:31:27.42 to 17:06:34.43, Dur: 2107s
 TimeLngth: 2107.01s, TimeInt: 28ms (34.7pps)
 TimeCor=-13.0s, DSPDif(mn,min,mx):28,28,341
 PPS(min,max,std): 17,36,2.27
 Prof: 902 to 73956, NumProf(t/r): 73054/17069
 ProcTime/Recs: 16:31:27-16:39:39/0-17068
 MxAcQtime: 33ms; DRate: 194.1KB/s; Flags: 0, 0, 0
 Pulse: 275ns, IFfilt: 5.0MHz; ppPol: HH HV VV
 TxPol: HHVV, PRF: 20 10 20 10 kHz
 Range: Delay 75m, Spacing 15m, Gates 100
 Ave. Pulses: 84, Rng/Prof Aspect@90m/s: 5.8

	Min	Max	Mean	Std	Varc%
hhN(dB)	-67.21	-62.51	-65.49	-74.70	12.0
vvN(dB)	-66.44	-61.90	-64.54	-74.01	11.3
hhL(dB)	-16.99	-1.98	-5.71	-8.34	54.5
vvL(dB)	-15.56	0.42	-4.73	-6.43	67.5
ppN(m/s)	-12.51	12.20	-0.11	4.08	
ppT(m/s)	-98.84	96.36	-0.89	32.23	
hh/vv(dB)	-NaN	54.73	16.79	34.39	5759
vh/hh(dB)	-43.58	2.86	-5.55	-1.99	227.
hv/vv(dB)	-NaN	-15.13	-40.27	-30.22	1010
hnjmp(dB)	-2.16	1.95	-0.08	-8.64	13.9
vnjmp(dB)	-2.49	2.07	-0.07	-8.59	14.1



IHOP 2002 (dual-antenna config, modes 1,3,4,7) Data (cal: 49.0,50.0)

W2002-06-20-16-31-38 - PPMAG4	Min	Max	Mean	Std	Varc%	
IRIG:1,UTC: 16:31:27.42 to 17:06:34.43, Dur: 2107s	hhN (dB)	-67.21	-62.51	-65.49	-74.70	12.0
TimeLngth: 2107.01s, TimeInt: 28ms (34.7pps)	vvN (dB)	-66.44	-61.90	-64.54	-74.01	11.3
TimeCor=-13.0s, DSPDif(mn,min,mx):28,28,341	hhL (dB)	-16.99	-1.98	-5.71	-8.34	54.5
PPS(min,max,std): 17,36,2.27	vvL (dB)	-15.56	0.42	-4.73	-6.43	67.5
Prof: 902 to 73956, NumProf(t/r): 73054/17069	ppN (m/s)	-12.51	12.20	-0.11	4.08	
ProcTime/Recs: 16:31:27-16:39:39/0-17068	ppT (m/s)	-98.84	96.36	-0.89	32.23	
MxACQtime: 33ms; DRate: 194.1KB/s; Flags: 0, 0, 0	hh/vv (dB)	-NaN	54.73	16.79	34.39	5759
Pulse: 275ns, IFilt: 5.0MHz; ppPol: HH HV VV	vh/hh (dB)	-43.58	2.86	-5.55	-1.99	227.
TxPol: HHV, PRF: 20 10 20 10 kHz	hv/vv (dB)	-NaN	-15.13	-40.27	-30.22	1010
Range: Delay 75m, Spacing 15m, Gates 100	hnjmp (dB)	-2.16	1.95	-0.08	-8.64	13.9
Ave. Pulses: 84, Rng/Prof Aspect@90m/s: 5.8	vnjmp (dB)	-2.49	2.07	-0.07	-8.59	14.1