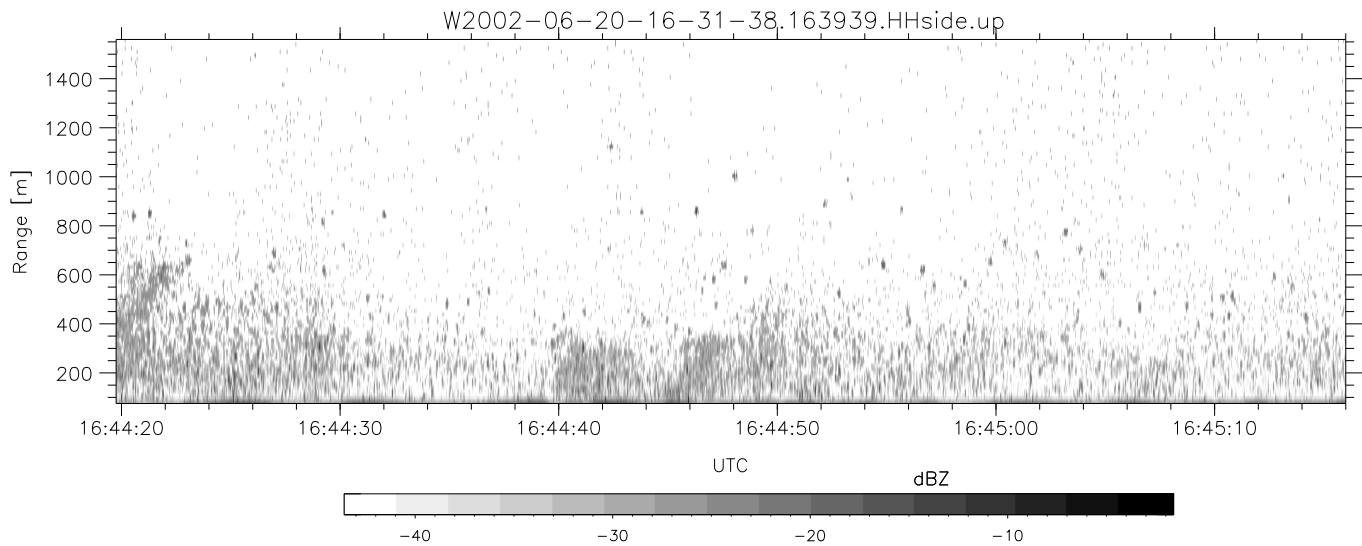
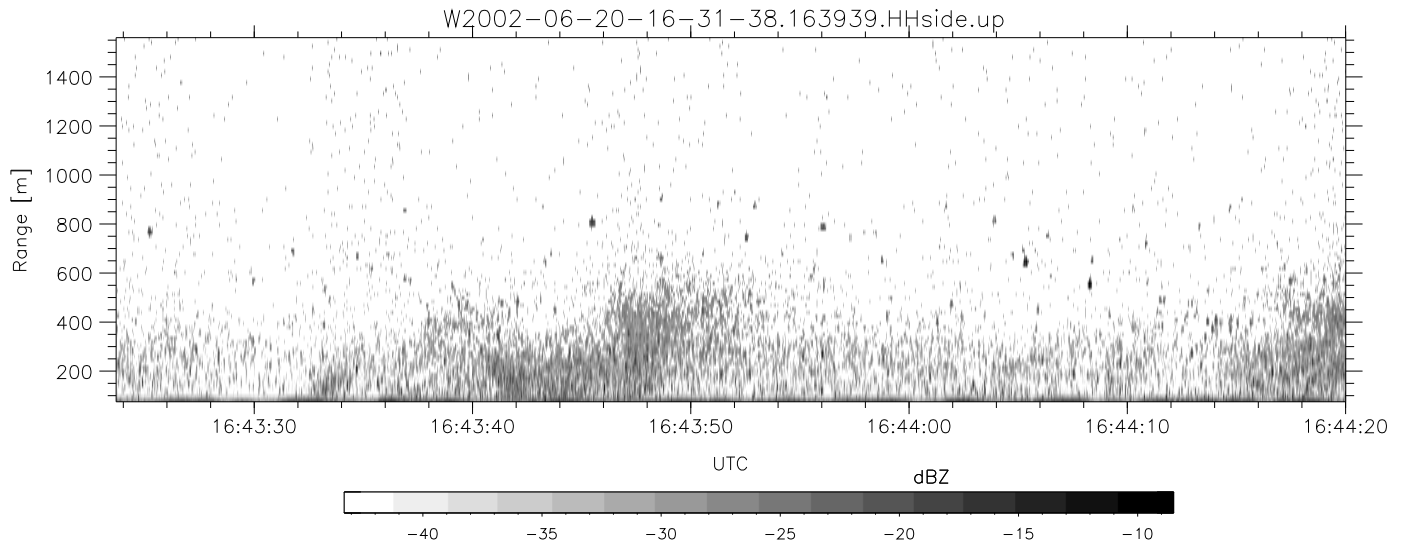
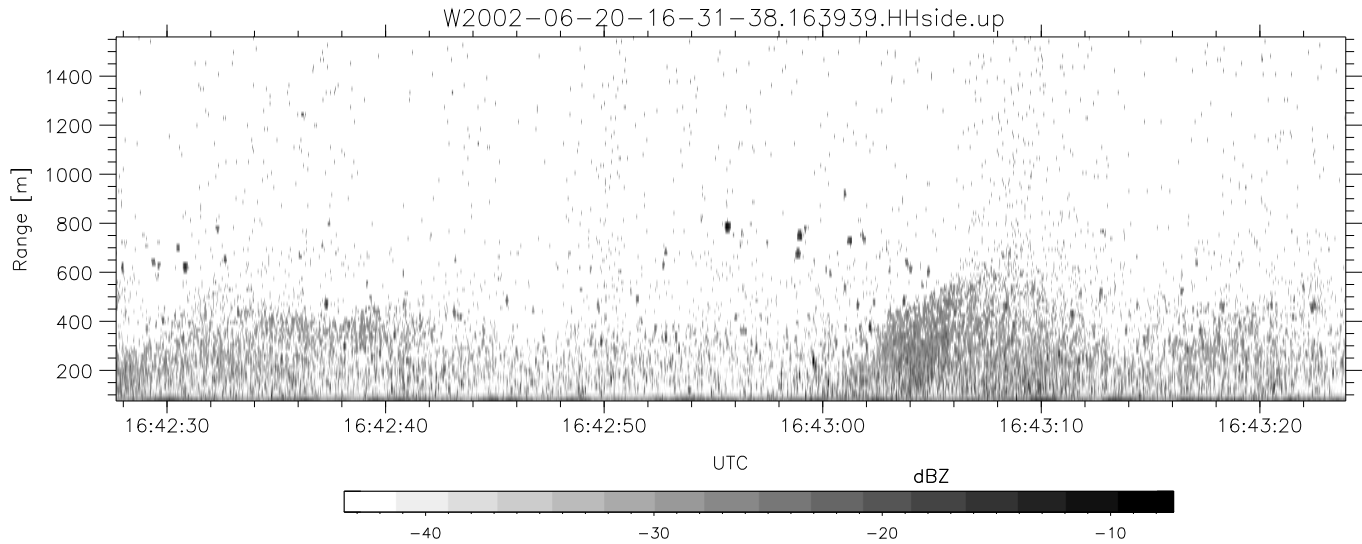


IHOP 2002 (dual-antenna config, modes 1,3,4,7) Data (cal: 49.0,50.0)

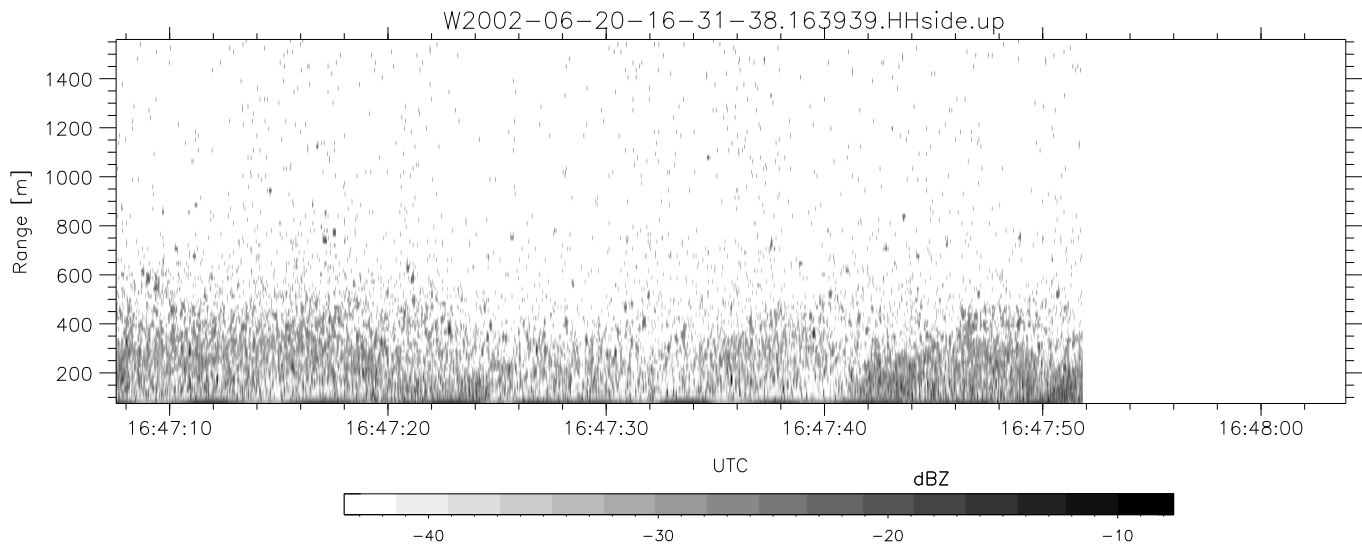
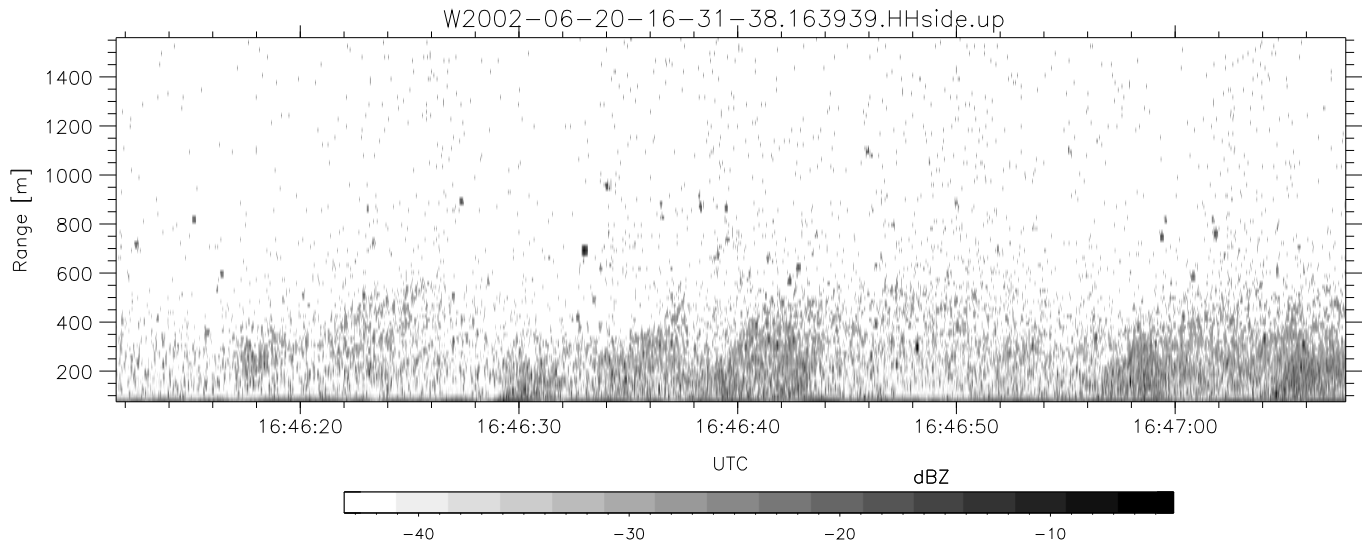
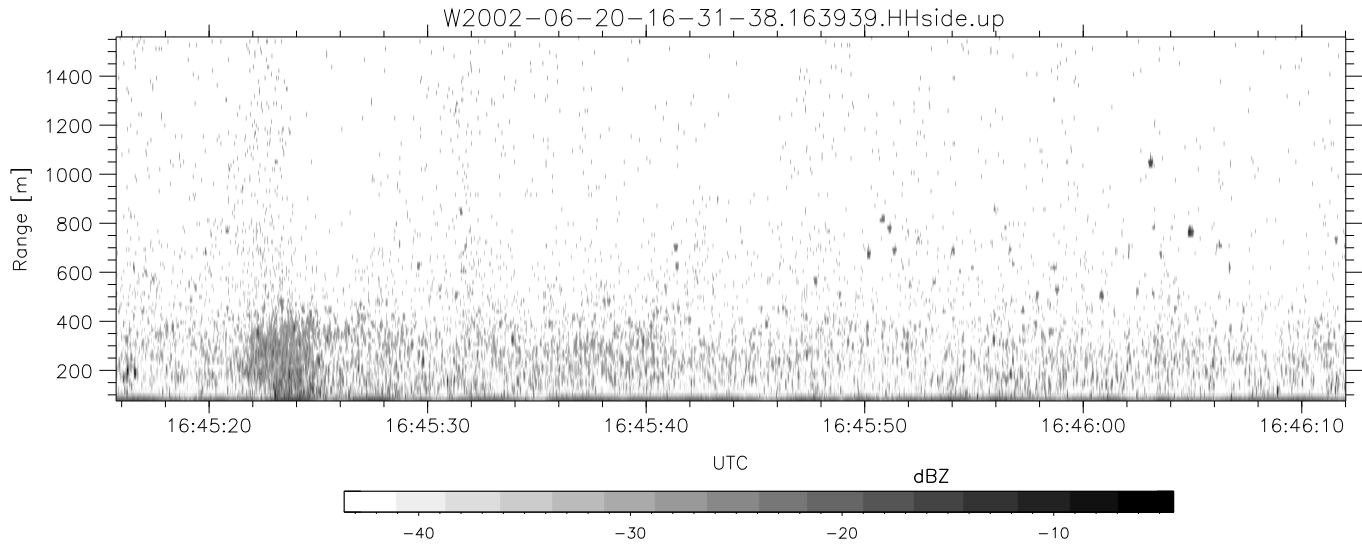
W2002-06-20-16-31-38 - PPMAG4
 IRIG:1,UTC: 16:31:27.42 to 17:06:34.43, Dur: 2107s
 TimeLngth: 2107.01s, TimeInt: 28ms (34.7pps)
 TimeCor=-13.0s, DSPDif(mn,min,mx):28,28,310
 PPS(min,max,std): 25,36,2.16
 Prof: 902 to 73956, NumProf(t/r): 73054/17069
 ProcTime/Recs: 16:39:39-16:47:51/17069-34137
 MxACQtime: 33ms; DRate: 194.1KB/s; Flags: 0, 0, 0
 Pulse: 275ns, IFilt: 5.0MHz; ppPol: HH HV VV
 TxPol: HHVV, PRF: 20 10 20 10 kHz
 Range: Delay 75m, Spacing 15m, Gates 100
 Ave. Pulses: 84, Rng/Prof Aspect@90m/s: 5.8

	Min	Max	Mean	Std	Varc%
hhN(dB)	-67.35	-63.94	-65.50	-75.59	9.8
vvN(dB)	-66.41	-63.06	-64.51	-74.57	9.9
hhL(dB)	-17.17	-3.54	-10.74	-12.33	69.3
vvL(dB)	-12.02	0.01	-6.06	-7.48	72.0
ppN(m/s)	-12.32	12.48	-0.04	4.15	
ppT(m/s)	-97.32	98.60	-0.34	32.75	
hh/vv(dB)	-NaN	45.74	14.31	28.82	2820
vh/hh(dB)	-NaN	-27.59	-33.35	-34.17	82.9
hv/vv(dB)	-NaN	-34.10	-52.80	-46.48	428.
hnjmp(dB)	-1.90	2.26	0.15	-8.43	13.9
vnjmp(dB)	-2.62	2.19	0.17	-8.44	13.8



IHOP 2002 (dual-antenna config, modes 1,3,4,7) Data (cal: 49.0,50.0)

	Min	Max	Mean	Std	Varc%	
W2002-06-20-16-31-38 - PPMAG4						
IRIG:1,UTC: 16:31:27.42 to 17:06:34.43, Dur: 2107s						
TimeLngth: 2107.01s, TimeInt: 28ms (34.7pps)						
TimeCor=-13.0s, DSPDif(mn,min,mx):28,28,310						
PPS(min,max,std): 25,36,2.16						
Prof: 902 to 73956, NumProf(t/r): 73054/17069	hhN (dB)	-67.35	-63.94	-65.50	-75.59	9.8
ProcTime/Recs: 16:39:39-16:47:51/17069-34137	vvN (dB)	-66.41	-63.06	-64.51	-74.57	9.9
MxACQtime: 33ms; DRate: 194.1KB/s; Flags: 0, 0, 0	hhL (dB)	-17.17	-3.54	-10.74	-12.33	69.3
Pulse: 275ns, IFfilt: 5.0MHz; ppPol: HH HV VV	vvL (dB)	-12.02	0.01	-6.06	-7.48	72.0
TxPol: HHVV, PRF: 20 10 20 10 kHz	ppN (m/s)	-12.32	12.48	-0.04	4.15	
Range: Delay 75m, Spacing 15m, Gates 100	ppT (m/s)	-97.32	98.60	-0.34	32.75	
Ave. Pulses: 84, Rng/Prof Aspect@90m/s: 5.8	hh/vv (dB)	-NaN	45.74	14.31	28.82	2820
	vh/hh (dB)	-NaN	-27.59	-33.35	-34.17	82.9
	hv/vv (dB)	-NaN	-34.10	-52.80	-46.48	428.
	hnjmp (dB)	-1.90	2.26	0.15	-8.43	13.9
	vnjmp (dB)	-2.62	2.19	0.17	-8.44	13.8



IHOP 2002 (dual-antenna config, modes 1,3,4,7) Data (cal: 49.0,50.0)

	Min	Max	Mean	Std	Varc%	
W2002-06-20-16-31-38 - PPMAG4						
IRIG:1,UTC: 16:31:27.42 to 17:06:34.43, Dur: 2107s	hhN (dB)	-67.35	-63.94	-65.50	-75.59	9.8
TimeLngth: 2107.01s, TimeInt: 28ms (34.7pps)	vvN (dB)	-66.41	-63.06	-64.51	-74.57	9.9
TimeCor=-13.0s, DSPDif(mn,min,mx):28,28,310	hhL (dB)	-17.17	-3.54	-10.74	-12.33	69.3
PPS(min,max,std): 25,36,2.16	vvL (dB)	-12.02	0.01	-6.06	-7.48	72.0
Prof: 902 to 73956, NumProf(t/r): 73054/17069	ppN (m/s)	-12.32	12.48	-0.04	4.15	
ProcTime/Recs: 16:39:39-16:47:51/17069-34137	ppT (m/s)	-97.32	98.60	-0.34	32.75	
MxACQtime: 33ms; DRate: 194.1KB/s; Flags: 0, 0, 0	hh/vv (dB)	-NaN	45.74	14.31	28.82	2820
Pulse: 275ns, IFfilt: 5.0MHz; ppPol: HH HV VV	vh/hh (dB)	-NaN	-27.59	-33.35	-34.17	82.9
TxPol: HHVV, PRF: 20 10 20 10 kHz	hv/vv (dB)	-NaN	-34.10	-52.80	-46.48	428.
Range: Delay 75m, Spacing 15m, Gates 100	hn_jmp (dB)	-1.90	2.26	0.15	-8.43	13.9
Ave. Pulses: 84, Rng/Prof Aspect@90m/s: 5.8	vn_jmp (dB)	-2.62	2.19	0.17	-8.44	13.8