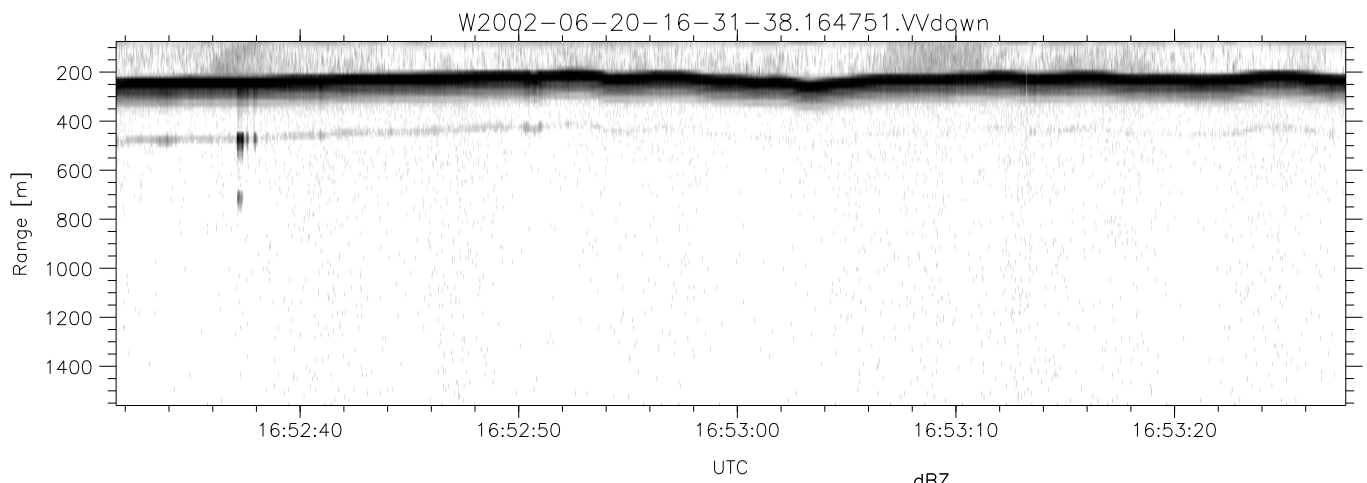
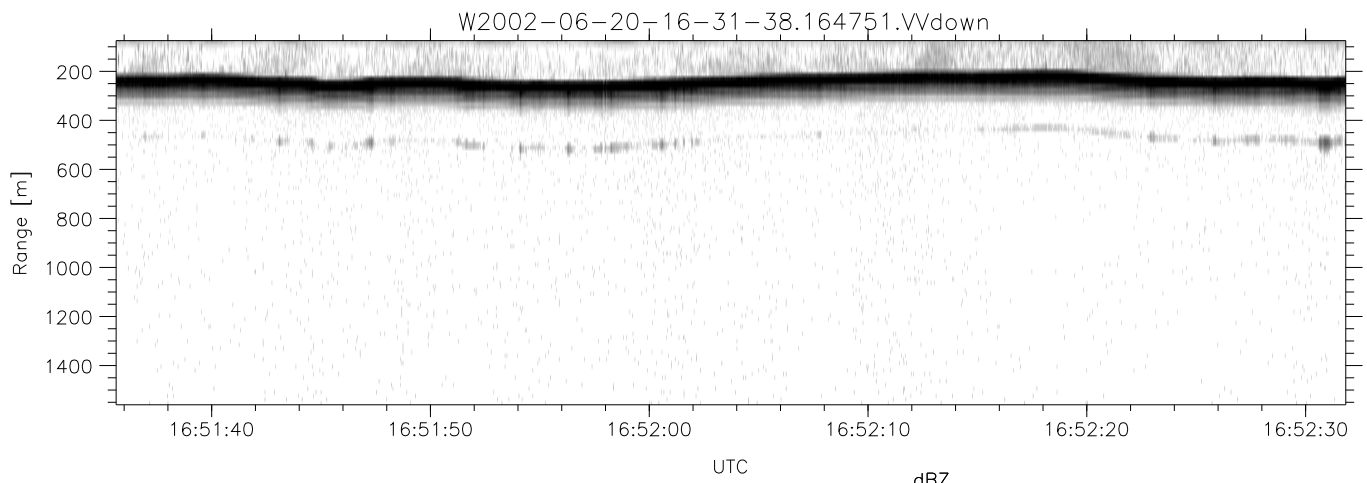
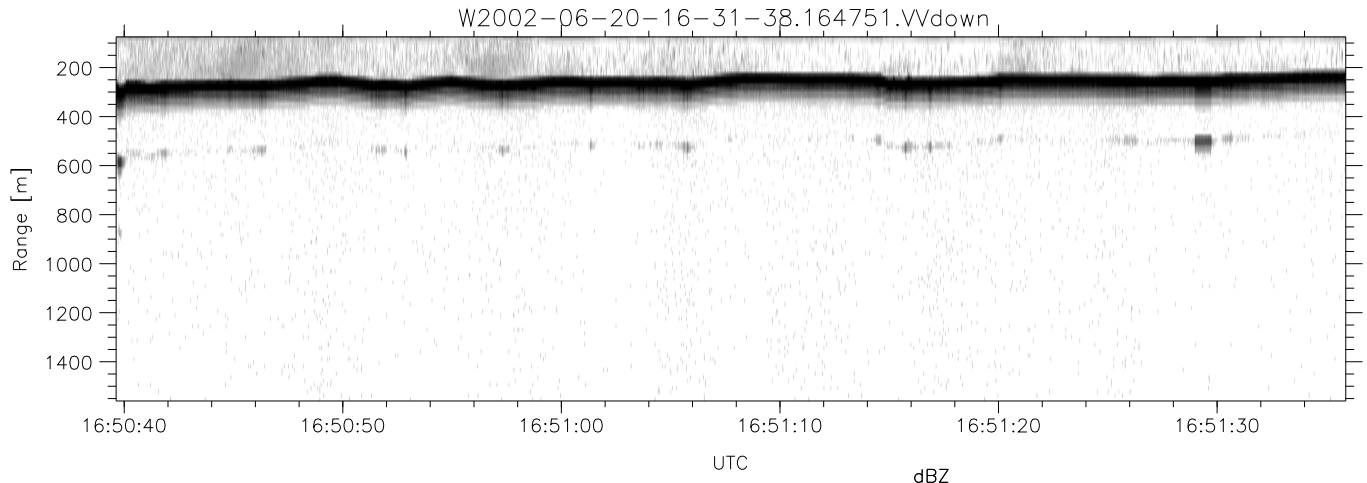


IHOP 2002 (dual-antenna config, modes 1,3,4,7) Data (cal: 49.0,50.0)

W2002-06-20-16-31-38 - PPMAG4  
 IRIG:1,UTC: 16:31:27.42 to 17:06:34.43, Dur: 2107s  
 TimeLngth: 2107.01s, TimeInt: 28ms (34.7pps)  
 TimeCor=-13.0s, DSPDif(mn,min,mx):28,28,307  
 PPS(min,max,std): 25,36,2.10  
 Prof: 902 to 73956, NumProf(t/r): 73054/17069  
 ProcTime/Recs: 16:47:51-16:56:03/34138-51206  
 MxACQtime: 33ms; DRate: 194.1KB/s; Flags: 0, 0, 0  
 Pulse: 275ns, IFilt: 5.0MHz; ppPol: HH HV VV  
 TxPol: HHVV, PRF: 20 10 20 10 kHz  
 Range: Delay 75m, Spacing 15m, Gates 100  
 Ave. Pulses: 84, Rng/Prof Aspect@90m/s: 5.8

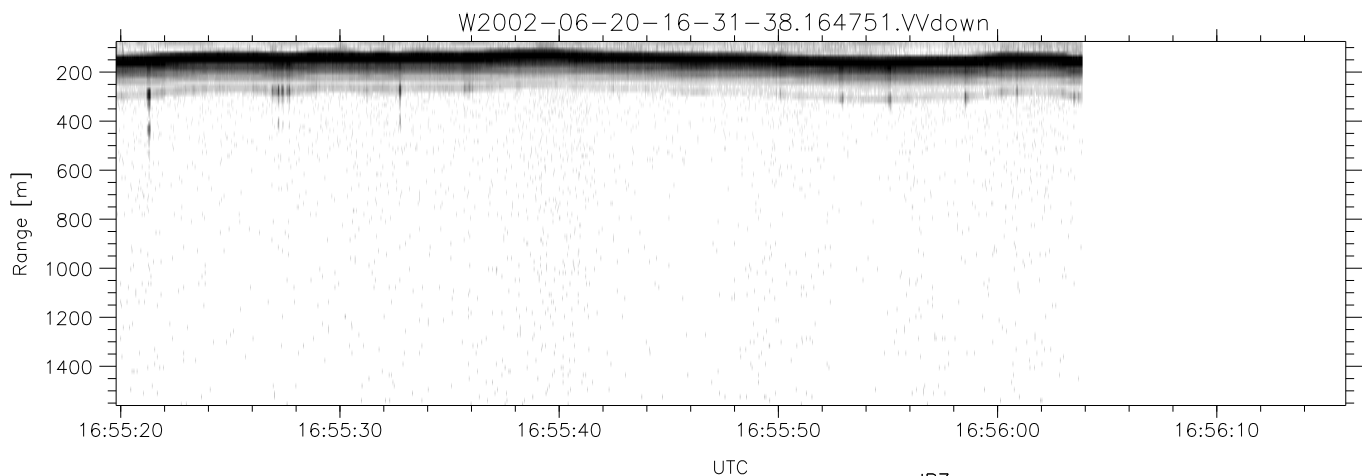
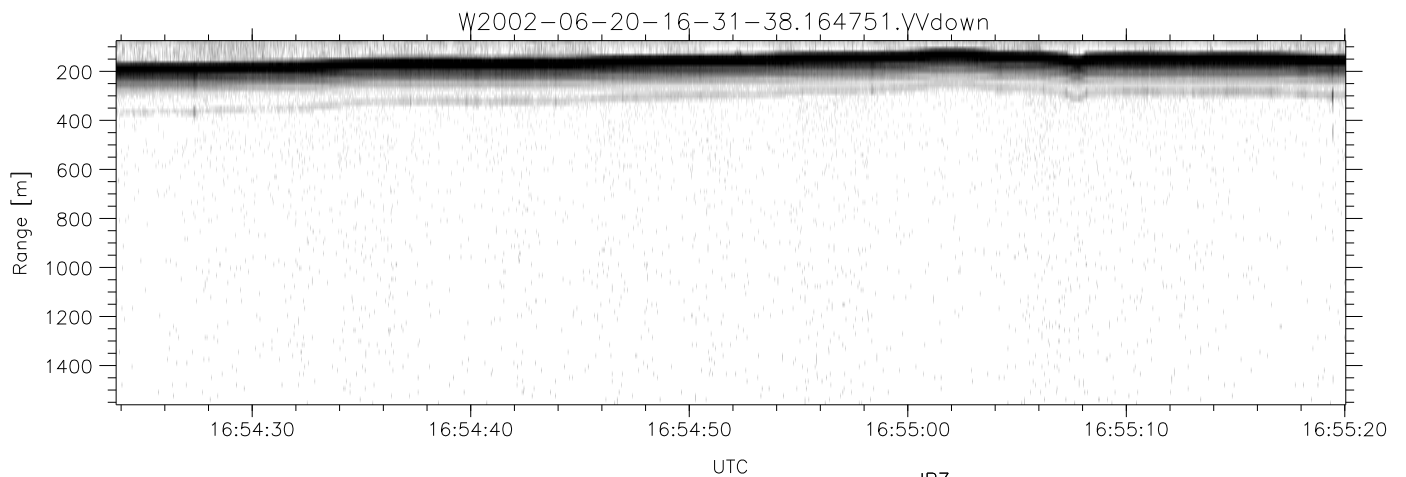
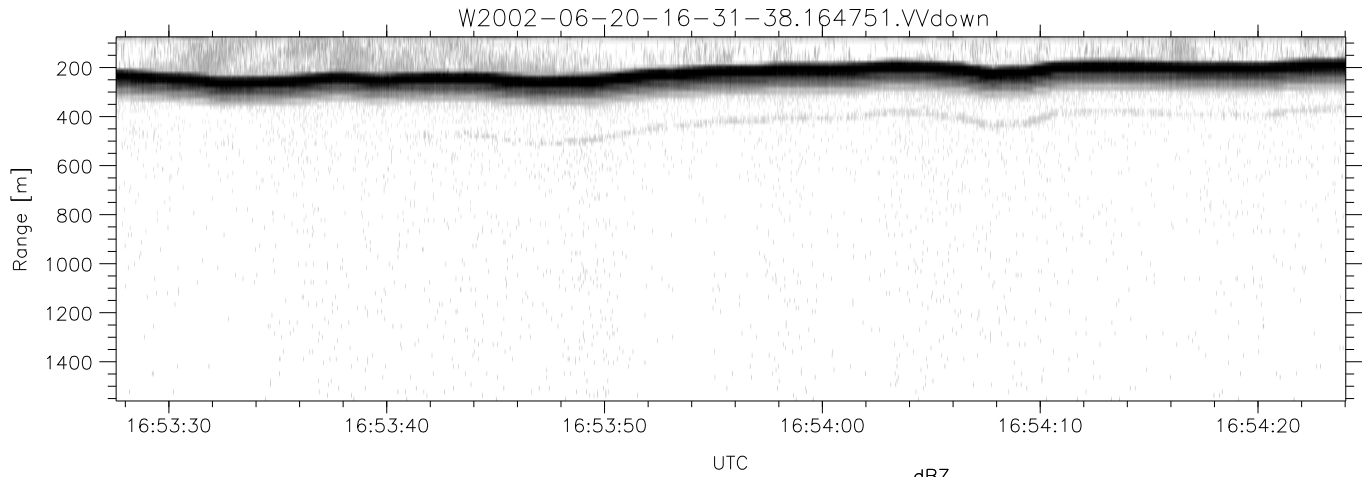
	Min	Max	Mean	Std	Varc%
hhN(dB)	-67.35	-63.93	-65.53	-75.62	9.8
vvN(dB)	-66.57	-62.91	-64.50	-74.55	9.9
hhL(dB)	-19.90	-4.01	-9.81	-11.24	71.9
vvL(dB)	-13.55	-0.36	-7.67	-9.07	72.4
ppN(m/s)	-12.80	12.26	-0.02	4.16	
ppT(m/s)	-101.1	96.86	-0.20	32.88	
hh/vv(dB)	-NaN	50.54	14.63	29.87	3345
vh/hh(dB)	-34.98	-3.03	-11.09	-7.99	204.
hv/vv(dB)	-NaN	-33.64	-52.00	-46.19	380.
hnjmp(dB)	-2.84	2.02	-0.07	-8.66	13.8
vnjmp(dB)	-2.42	1.90	-0.07	-8.63	13.9



IHOP 2002 (dual-antenna config, modes 1,3,4,7) Data (cal: 49.0,50.0)

W2002-06-20-16-31-38 - PPMAG4  
 IRIG:1,UTC: 16:31:27.42 to 17:06:34.43, Dur: 2107s  
 TimeLngth: 2107.01s, TimeInt: 28ms (34.7pps)  
 TimeCor=-13.0s, DSPDif(mn,min,mx):28,28,307  
 PPS(min,max,std): 25,36,2.10  
 Prof: 902 to 73956, NumProf(t/r): 73054/17069  
 ProcTime/Recs: 16:47:51-16:56:03/34138-51206  
 MxACQtime: 33ms; DRate: 194.1KB/s; Flags: 0, 0, 0  
 Pulse: 275ns, IFilt: 5.0MHz; ppPol: HH HV VV  
 TxPol: HHVV, PRF: 20 10 20 10 kHz  
 Range: Delay 75m, Spacing 15m, Gates 100  
 Ave. Pulses: 84, Rng/Prof Aspect@90m/s: 5.8

	Min	Max	Mean	Std	Varc%
hhN(dB)	-67.35	-63.93	-65.53	-75.62	9.8
vvN(dB)	-66.57	-62.91	-64.50	-74.55	9.9
hhL(dB)	-19.90	-4.01	-9.81	-11.24	71.9
vvL(dB)	-13.55	-0.36	-7.67	-9.07	72.4
ppN(m/s)	-12.80	12.26	-0.02	4.16	
ppT(m/s)	-101.1	96.86	-0.20	32.88	
hh/vv(dB)	-NaN	50.54	14.63	29.87	3345
vh/hh(dB)	-34.98	-3.03	-11.09	-7.99	204.
hv/vv(dB)	-NaN	-33.64	-52.00	-46.19	380.
hnjmp(dB)	-2.84	2.02	-0.07	-8.66	13.8
vnjmp(dB)	-2.42	1.90	-0.07	-8.63	13.9



IHOP 2002 (dual-antenna config, modes 1,3,4,7) Data (cal: 49.0,50.0)

W2002-06-20-16-31-38 - PPMAG4  
 IRIG:1,UTC: 16:31:27.42 to 17:06:34.43, Dur: 2107s  
 TimeLngth: 2107.01s, TimeInt: 28ms (34.7pps)  
 TimeCor=-13.0s, DSPDif(mn,min,mx):28,28,307  
 PPS(min,max,std): 25,36,2.10  
 Prof: 902 to 73956, NumProf(t/r): 73054/17069  
 ProcTime/Recs: 16:47:51-16:56:03/34138-51206  
 MxACQtime: 33ms; DRate: 194.1KB/s; Flags: 0, 0, 0  
 Pulse: 275ns, IFfilt: 5.0MHz; ppPol: HH HV VV  
 TxPol: HHVV, PRF: 20 10 20 10 kHz  
 Range: Delay 75m, Spacing 15m, Gates 100  
 Ave. Pulses: 84, Rng/Prof Aspect@90m/s: 5.8

	Min	Max	Mean	Std	Varc%
hhN(dB)	-67.35	-63.93	-65.53	-75.62	9.8
vvN(dB)	-66.57	-62.91	-64.50	-74.55	9.9
hhL(dB)	-19.90	-4.01	-9.81	-11.24	71.9
vvL(dB)	-13.55	-0.36	-7.67	-9.07	72.4
ppN(m/s)	-12.80	12.26	-0.02	4.16	
ppT(m/s)	-101.1	96.86	-0.20	32.88	
hh/vv(dB)	-NaN	50.54	14.63	29.87	3345
vh/hh(dB)	-34.98	-3.03	-11.09	-7.99	204.
hv/vv(dB)	-NaN	-33.64	-52.00	-46.19	380.
hnjmp(dB)	-2.84	2.02	-0.07	-8.66	13.8
vnjmp(dB)	-2.42	1.90	-0.07	-8.63	13.9