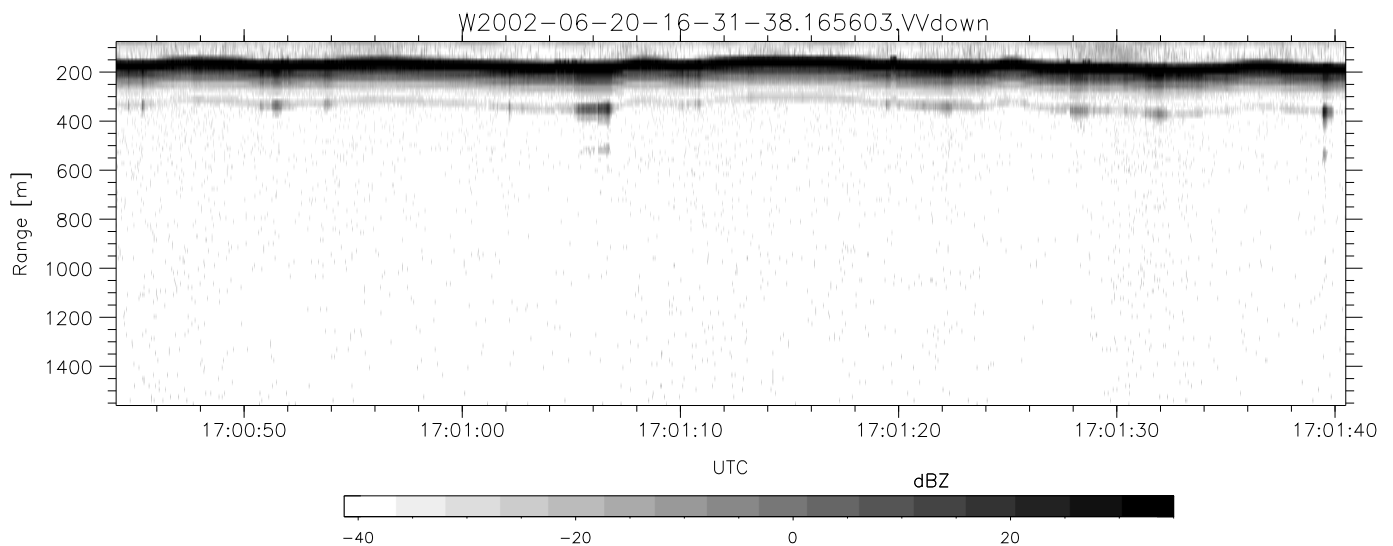
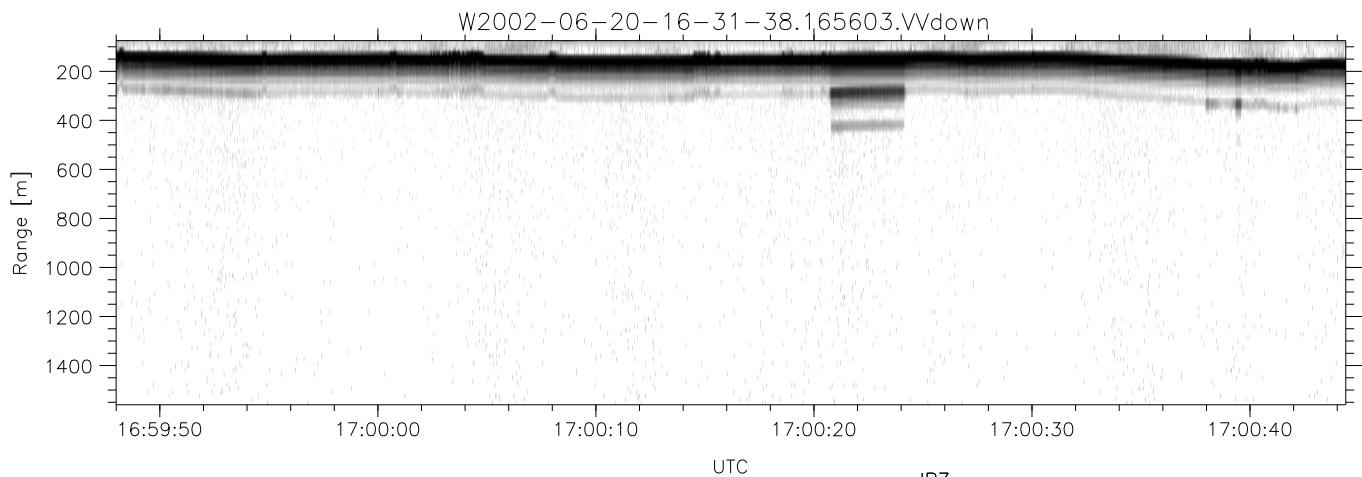
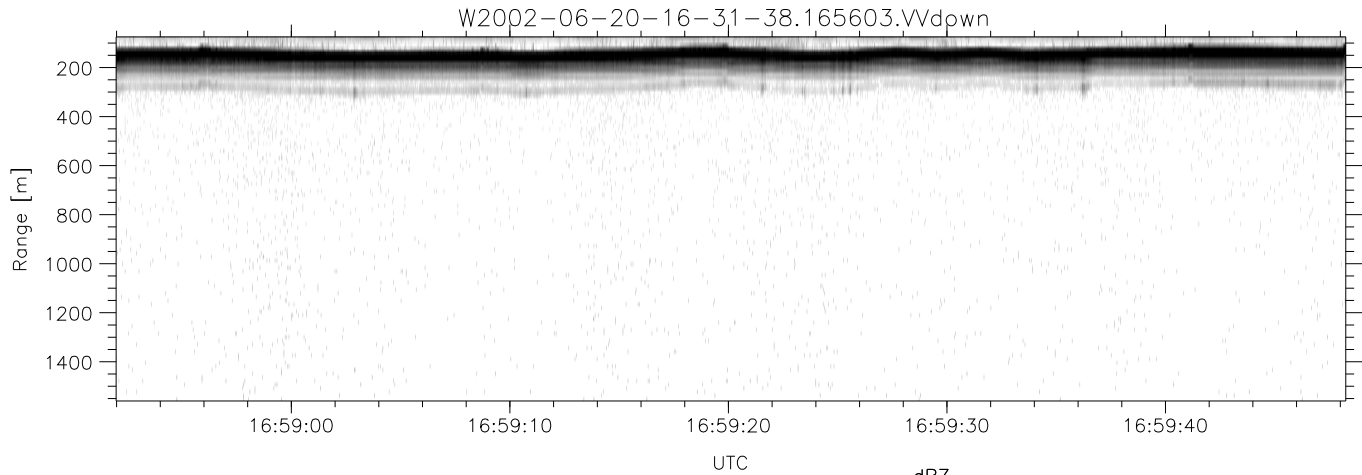


IHOP 2002 (dual-antenna config, modes 1,3,4,7) Data (cal: 49.0,50.0)

W2002-06-20-16-31-38 - PPMAG4
 IRIG:1,UTC: 16:31:27.42 to 17:06:34.43, Dur: 2107s
 TimeLngth: 2107.01s, TimeInt: 28ms (34.7pps)
 TimeCor=-13.0s, DSPDif(mn,min,mx):28,28,299
 PPS(min,max,std): 25,36,2.15
 Prof: 902 to 73956, NumProf(t/r): 73054/17069
 ProcTime/Recs: 16:56:03-17:04:16/51207-68275
 MxACQtime: 33ms; DRate: 194.1KB/s; Flags: 0, 0, 0
 Pulse: 275ns, IFfilt: 5.0MHz; ppPol: HH HV VV
 TxPol: HHVV, PRF: 20 10 20 10 kHz
 Range: Delay 75m, Spacing 15m, Gates 100
 Ave. Pulses: 84, Rng/Prof Aspect@90m/s: 5.8

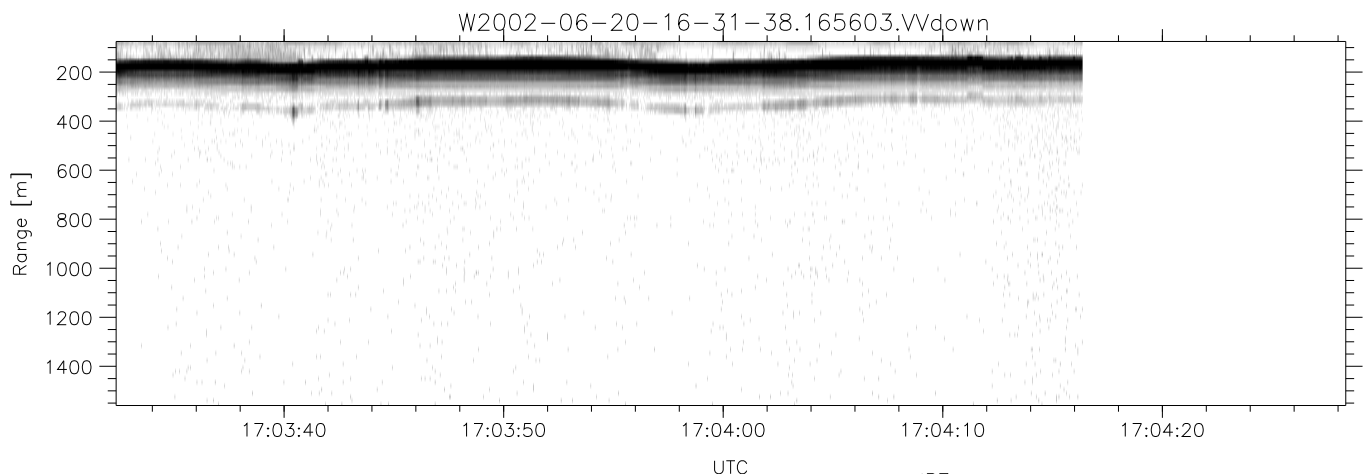
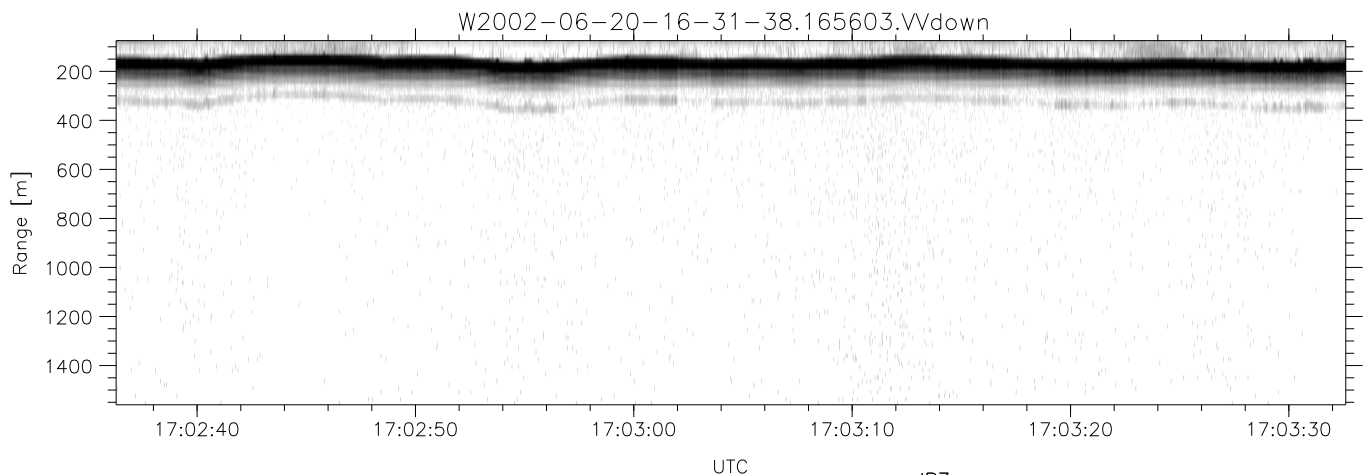
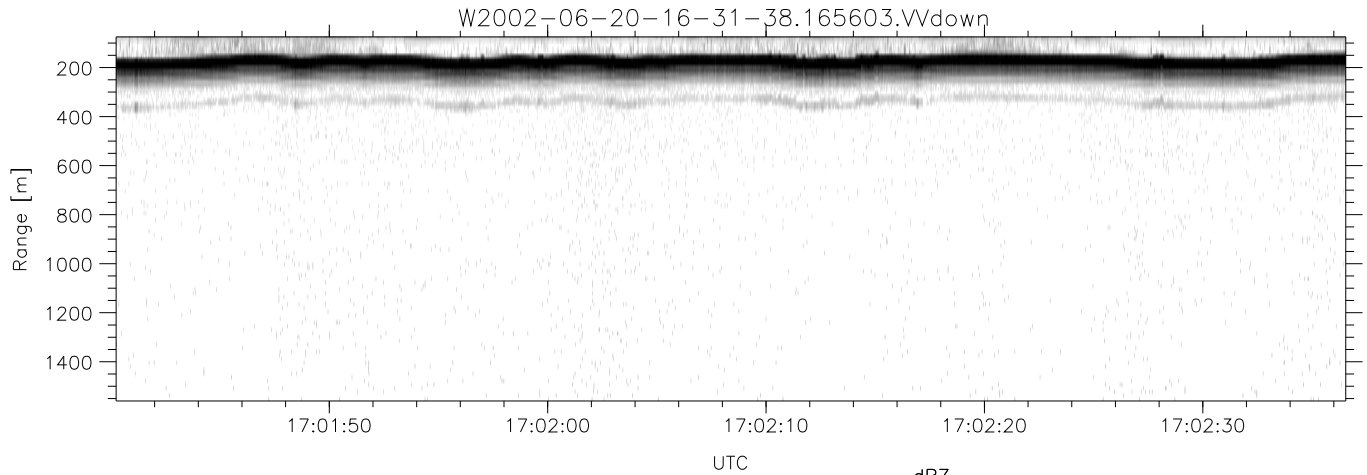
	Min	Max	Mean	Std	Varc%
hhN(dB)	-67.37	-64.09	-65.57	-75.65	9.8
vvN(dB)	-66.69	-63.04	-64.57	-74.59	10.0
hhL(dB)	-21.88	-4.30	-11.11	-12.12	79.3
vvL(dB)	-14.06	-0.41	-7.53	-8.33	83.2
ppN(m/s)	-12.79	12.40	-0.02	4.17	
ppT(m/s)	-101.0	97.98	-0.17	32.94	
hh/vv(dB)	-NaN	51.13	10.36	29.34	7910
vh/hh(dB)	-NaN	-7.25	-16.48	-12.98	223.
hv/vv(dB)	-NaN	-33.15	-50.46	-45.15	339.
hnjmp(dB)	-1.99	2.73	0.16	-8.43	13.9
vnjmp(dB)	-2.16	2.07	0.17	-8.39	13.9



IHOP 2002 (dual-antenna config, modes 1,3,4,7) Data (cal: 49.0,50.0)

W2002-06-20-16-31-38 - PPMAG4
 IRIG:1,UTC: 16:31:27.42 to 17:06:34.43, Dur: 2107s
 TimeLngth: 2107.01s, TimeInt: 28ms (34.7pps)
 TimeCor=-13.0s, DSPDif(mn,min,mx):28,28,299
 PPS(min,max,std): 25,36,2.15
 Prof: 902 to 73956, NumProf(t/r): 73054/17069
 ProcTime/Recs: 16:56:03-17:04:16/51207-68275
 MxACQtime: 33ms; DRate: 194.1KB/s; Flags: 0, 0, 0
 Pulse: 275ns, IFilt: 5.0MHz; ppPol: HH HV VV
 TxPol: HHVV, PRF: 20 10 20 10 kHz
 Range: Delay 75m, Spacing 15m, Gates 100
 Ave. Pulses: 84, Rng/Prof Aspect@90m/s: 5.8

	Min	Max	Mean	Std	Varc%
hhN(dB)	-67.37	-64.09	-65.57	-75.65	9.8
vvN(dB)	-66.69	-63.04	-64.57	-74.59	10.0
hhL(dB)	-21.88	-4.30	-11.11	-12.12	79.3
vvL(dB)	-14.06	-0.41	-7.53	-8.33	83.2
ppN(m/s)	-12.79	12.40	-0.02	4.17	
ppT(m/s)	-101.0	97.98	-0.17	32.94	
hh/vv(dB)	-NaN	51.13	10.36	29.34	7910
vh/hh(dB)	-NaN	-7.25	-16.48	-12.98	223.
hv/vv(dB)	-NaN	-33.15	-50.46	-45.15	339.
hnjmp(dB)	-1.99	2.73	0.16	-8.43	13.9
vnjmp(dB)	-2.16	2.07	0.17	-8.39	13.9



IHOP 2002 (dual-antenna config, modes 1,3,4,7) Data (cal: 49.0,50.0)

W2002-06-20-16-31-38 - PPMAG4
 IRIG:1,UTC: 16:31:27.42 to 17:06:34.43, Dur: 2107s
 TimeLngth: 2107.01s, TimeInt: 28ms (34.7pps)
 TimeCor=-13.0s, DSPDif(mn,min,mx):28,28,299
 PPS(min,max,std): 25,36,2.15
 Prof: 902 to 73956, NumProf(t/r): 73054/17069
 ProcTime/Recs: 16:56:03-17:04:16/51207-68275
 MxACQtime: 33ms; DRate: 194.1KB/s; Flags: 0, 0, 0
 Pulse: 275ns, IFfilt: 5.0MHz; ppPol: HH HV VV
 TxPol: HHVV, PRF: 20 10 20 10 kHz
 Range: Delay 75m, Spacing 15m, Gates 100
 Ave. Pulses: 84, Rng/Prof Aspect@90m/s: 5.8

	Min	Max	Mean	Std	Varc%
hhN(dB)	-67.37	-64.09	-65.57	-75.65	9.8
vvN(dB)	-66.69	-63.04	-64.57	-74.59	10.0
hhL(dB)	-21.88	-4.30	-11.11	-12.12	79.3
vvL(dB)	-14.06	-0.41	-7.53	-8.33	83.2
ppN(m/s)	-12.79	12.40	-0.02	4.17	
ppT(m/s)	-101.0	97.98	-0.17	32.94	
hh/vv(dB)	-NaN	51.13	10.36	29.34	7910
vh/hh(dB)	-NaN	-7.25	-16.48	-12.98	223.
hv/vv(dB)	-NaN	-33.15	-50.46	-45.15	339.
hnjmp(dB)	-1.99	2.73	0.16	-8.43	13.9
vnjmp(dB)	-2.16	2.07	0.17	-8.39	13.9