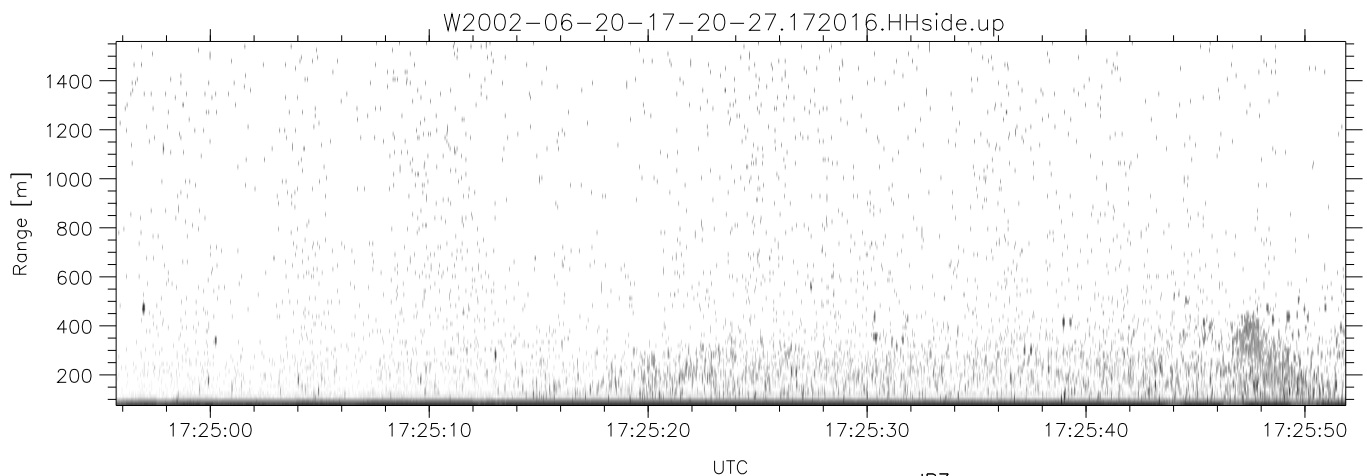
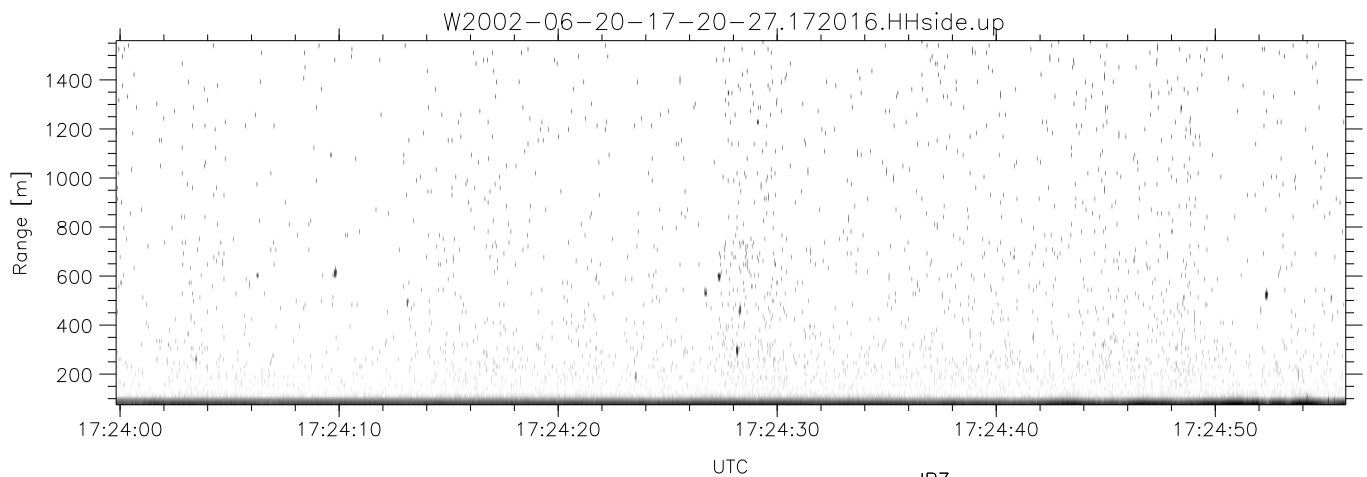
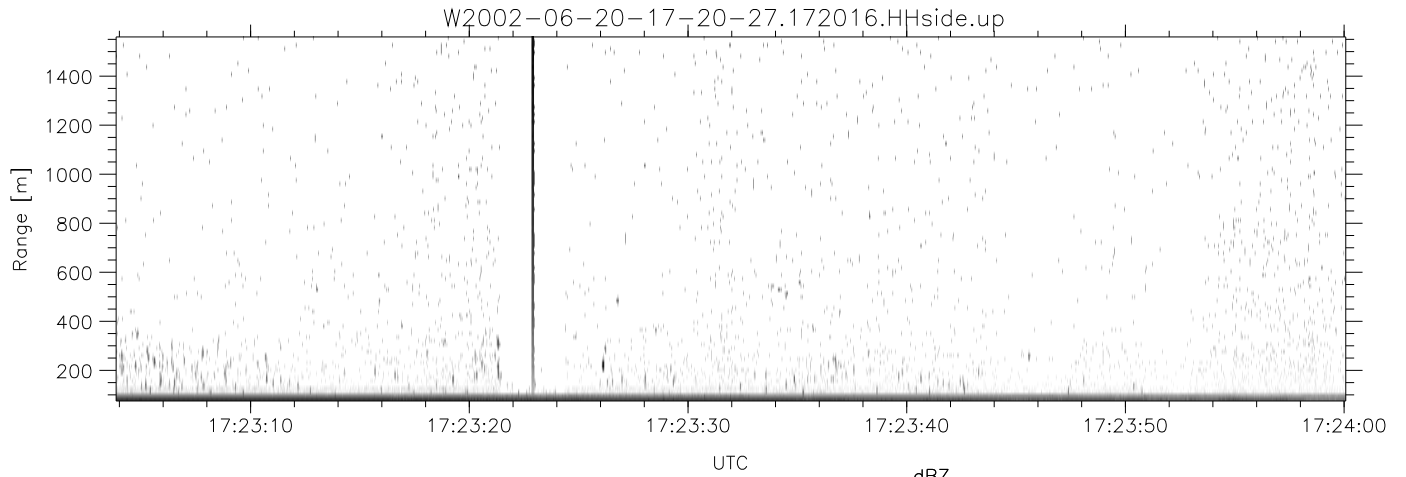


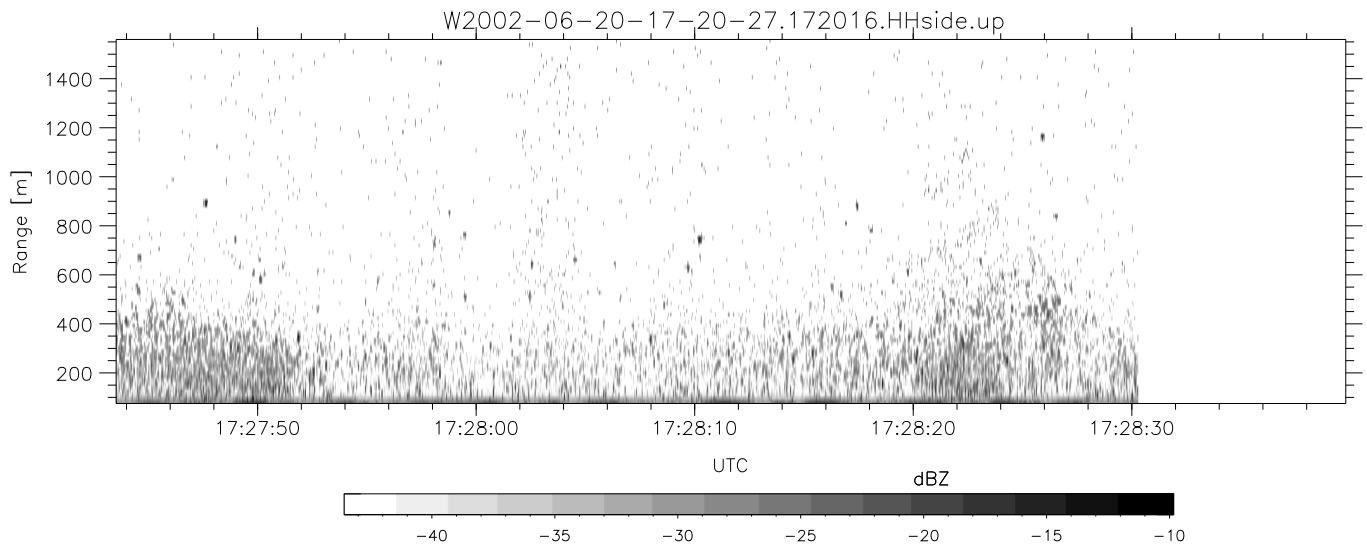
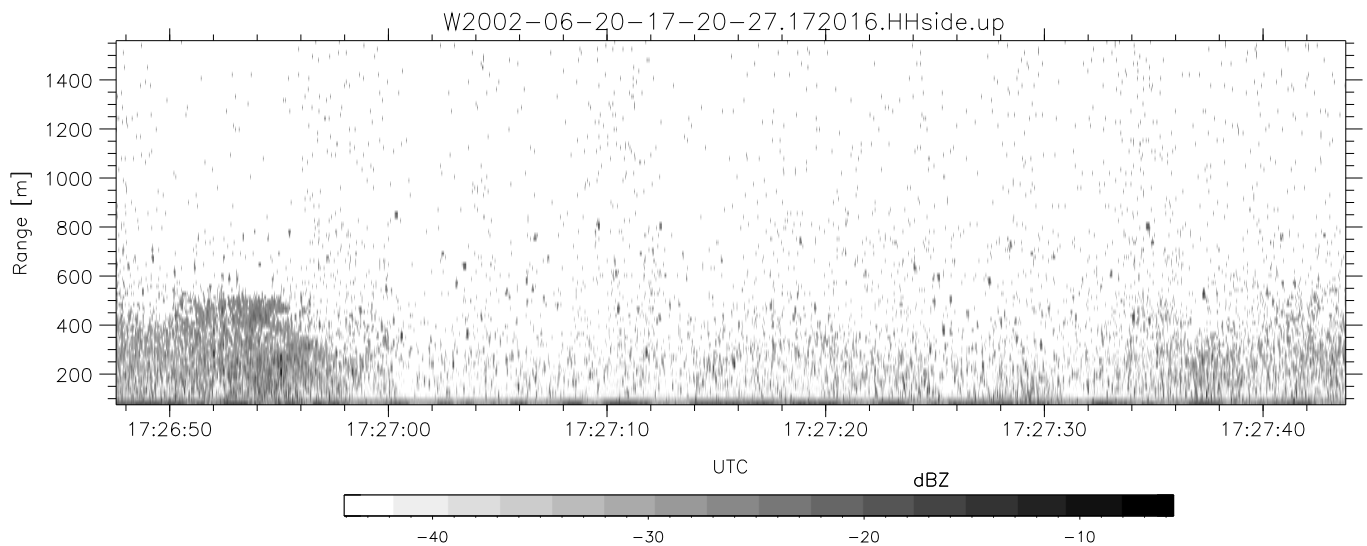
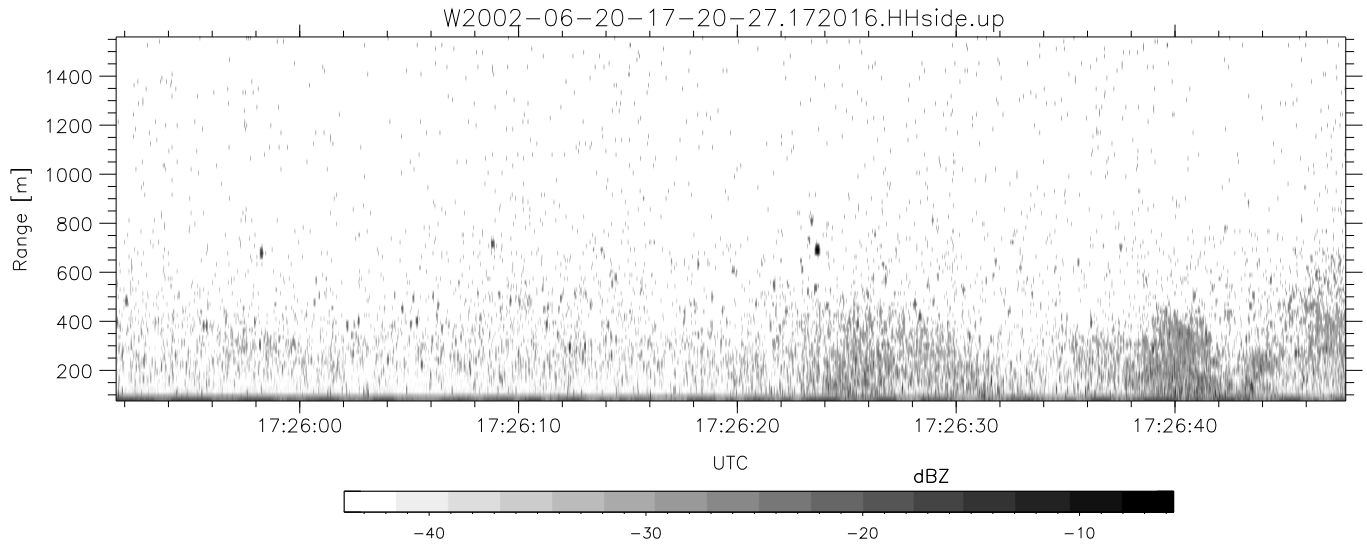
IHOP 2002 (dual-antenna config, modes 1,3,4,7) Data (cal: 49.0,50.0)

|  |            |        |        |        |        |       |
|--|------------|--------|--------|--------|--------|-------|
| W2002-06-20-17-20-27 - PPMAG4                      | Min        | Max    | Mean   | Std    | Varc%  |       |
| IRIG:1,UTC: 17:20:16.22 to 17:52:57.71, Dur: 1961s | hhN(dB)    | -67.50 | -62.26 | -65.80 | -75.82 | 9.9   |
| TimeLngth: 1961.48s, TimeInt: 28ms (34.5pps)       | vvN(dB)    | -66.40 | -61.37 | -64.68 | -74.62 | 10.1  |
| TimeCor=-13.0s, DSPDif(mn,min,mx):28,28,332        | hhL(dB)    | -19.66 | -2.78  | -6.79  | -8.69  | 64.6  |
| PPS(min,max,std): 14,36,2.37                       | vvL(dB)    | -12.73 | 0.02   | -3.42  | -5.58  | 60.7  |
| Prof: 409 to 68069, NumProf(t/r): 67660/17069      | ppN(m/s)   | -12.86 | 12.06  | -0.01  | 4.17   |       |
| ProcTime/Recs: 17:20:16-17:28:30/0-17068           | ppT(m/s)   | -101.5 | 95.31  | -0.08  | 32.98  |       |
| MxACQtime: 33ms; DRate: 193.1KB/s; Flags: 0, 0, 0  | hh/vv(dB)  | -NaN   | 43.33  | 8.71   | 30.75  | 1599  |
| Pulse: 275ns, IFfilt: 5.0MHz; ppPol: HH HV VV      | vh/hh(dB)  | -48.95 | -32.97 | -34.72 | -37.60 | 51.5  |
| TxPol: HHVV, PRF: 20 10 20 10 kHz                  | hv/vv(dB)  | -NaN   | -35.51 | -54.92 | -46.47 | 700.0 |
| Range: Delay 75m, Spacing 15m, Gates 100           | hn_jmp(dB) | -2.34  | 2.90   | 0.15   | -8.46  | 13.8  |
| Ave. Pulses: 84, Rng/Prof Aspect@90m/s: 5.7        | vn_jmp(dB) | -2.13  | 3.53   | 0.17   | -8.31  | 14.2  |



IHOP 2002 (dual-antenna config, modes 1,3,4,7) Data (cal: 49.0,50.0)

|  | Min         | Max    | Mean   | Std    | Varc%  |      |
|--|-------------|--------|--------|--------|--------|------|
| W2002-06-20-17-20-27 - PPMAG4                      |             |        |        |        |        |      |
| IRIG:1,UTC: 17:20:16.22 to 17:52:57.71, Dur: 1961s | hhN (dB)    | -67.50 | -62.26 | -65.80 | -75.82 | 9.9  |
| TimeLngth: 1961.48s, TimeInt: 28ms (34.5pps)       | vvN (dB)    | -66.40 | -61.37 | -64.68 | -74.62 | 10.1 |
| TimeCor=-13.0s, DSPDif(mn,min,mx):28,28,332        | hhL (dB)    | -19.66 | -2.78  | -6.79  | -8.69  | 64.6 |
| PPS(min,max,std): 14,36,2.37                       | vvL (dB)    | -12.73 | 0.02   | -3.42  | -5.58  | 60.7 |
| Prof: 409 to 68069, NumProf(t/r): 67660/17069      | ppN (m/s)   | -12.86 | 12.06  | -0.01  | 4.17   |      |
| ProcTime/Recs: 17:20:16-17:28:30/0-17068           | ppT (m/s)   | -101.5 | 95.31  | -0.08  | 32.98  |      |
| MxAcQtime: 33ms; DRate: 193.1KB/s; Flags: 0, 0, 0  | hh/vv (dB)  | -NaN   | 43.33  | 8.71   | 30.75  | 1599 |
| Pulse: 275ns, IFilt: 5.0MHz; ppPol: HH HV VV       | vh/hh (dB)  | -48.95 | -32.97 | -34.72 | -37.60 | 51.5 |
| TxPol: HHVV, PRF: 20 10 20 10 kHz                  | hv/vv (dB)  | -NaN   | -35.51 | -54.92 | -46.47 | 700. |
| Range: Delay 75m, Spacing 15m, Gates 100           | hn_jmp (dB) | -2.34  | 2.90   | 0.15   | -8.46  | 13.8 |
| Ave. Pulses: 84, Rng/Prof Aspect@90m/s: 5.7        | vn_jmp (dB) | -2.13  | 3.53   | 0.17   | -8.31  | 14.2 |



IHOP 2002 (dual-antenna config, modes 1,3,4,7) Data (cal: 49.0,50.0)

W2002-06-20-17-20-27 - PPMAG4  
 IRIG:1,UTC: 17:20:16.22 to 17:52:57.71, Dur: 1961s  
 TimeLngth: 1961.48s, TimeInt: 28ms (34.5pps)  
 TimeCor=-13.0s, DSPDif(mn,min,mx):28,28,332  
 PPS(min,max,std): 14,36,2.37  
 Prof: 409 to 68069, NumProf(t/r): 67660/17069  
 ProcTime/Recs: 17:20:16-17:28:30/0-17068  
 MxACQtime: 33ms; DRate: 193.1KB/s; Flags: 0, 0, 0  
 Pulse: 275ns, IFfilt: 5.0MHz; ppPol: HH HV VV  
 TxPol: HHVV, PRF: 20 10 20 10 kHz  
 Range: Delay 75m, Spacing 15m, Gates 100  
 Ave. Pulses: 84, Rng/Prof Aspect@90m/s: 5.7

|           | Min    | Max    | Mean   | Std    | Varc% |
|-----------|--------|--------|--------|--------|-------|
| hhN(dB)   | -67.50 | -62.26 | -65.80 | -75.82 | 9.9   |
| vvN(dB)   | -66.40 | -61.37 | -64.68 | -74.62 | 10.1  |
| hhL(dB)   | -19.66 | -2.78  | -6.79  | -8.69  | 64.6  |
| vvL(dB)   | -12.73 | 0.02   | -3.42  | -5.58  | 60.7  |
| ppN(m/s)  | -12.86 | 12.06  | -0.01  | 4.17   |       |
| ppT(m/s)  | -101.5 | 95.31  | -0.08  | 32.98  |       |
| hh/vv(dB) | -NaN   | 43.33  | 8.71   | 30.75  | 1599  |
| vh/hh(dB) | -48.95 | -32.97 | -34.72 | -37.60 | 51.5  |
| hv/vv(dB) | -NaN   | -35.51 | -54.92 | -46.47 | 700.  |
| hnjmp(dB) | -2.34  | 2.90   | 0.15   | -8.46  | 13.8  |
| vnjmp(dB) | -2.13  | 3.53   | 0.17   | -8.31  | 14.2  |