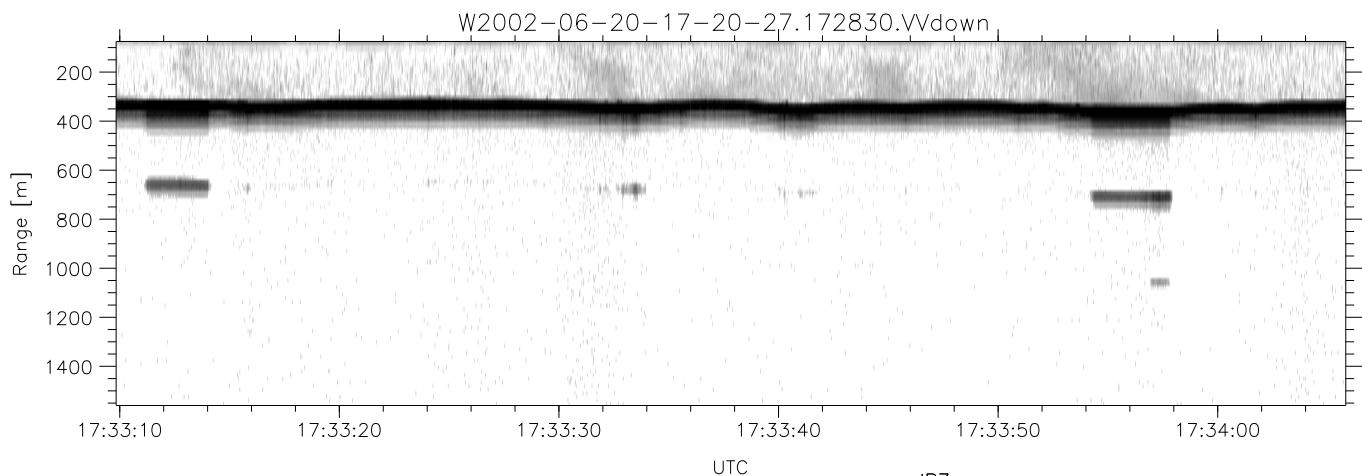
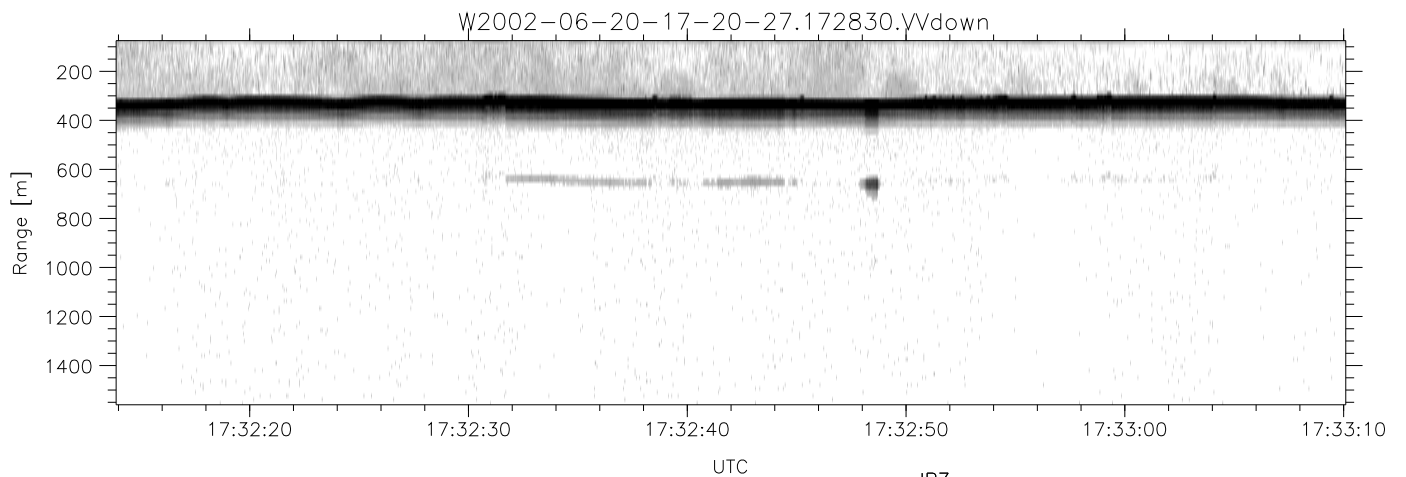
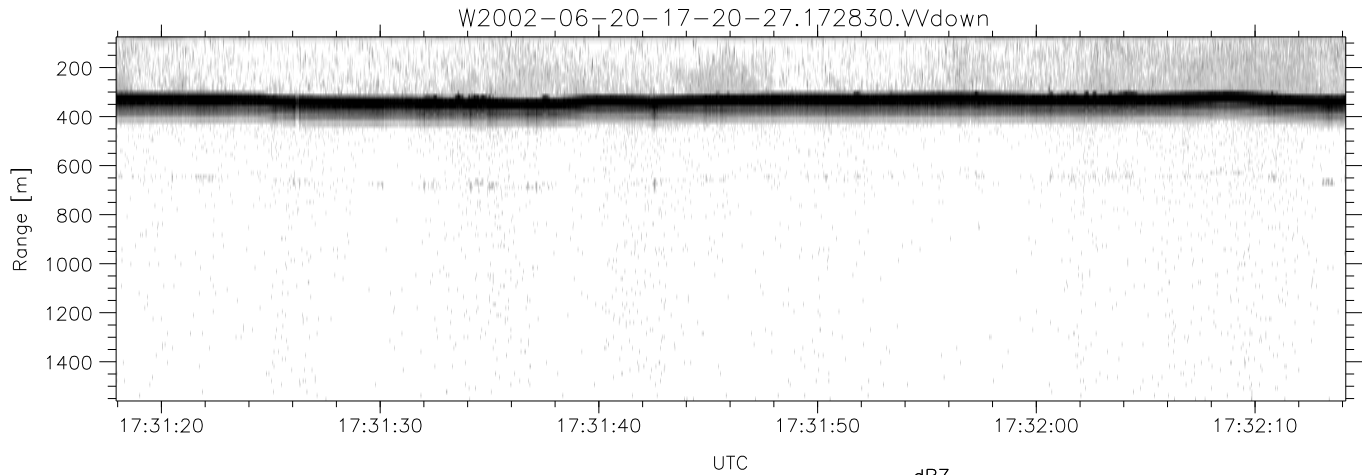


IHOP 2002 (dual-antenna config, modes 1,3,4,7) Data (cal: 49.0,50.0)

W2002-06-20-17-20-27 - PPMAG4
 IRIG:1,UTC: 17:20:16.22 to 17:52:57.71, Dur: 1961s
 TimeLngth: 1961.48s, TimeInt: 28ms (34.5pps)
 TimeCor=-13.0s, DSPDif(mn,min,mx):28,28,326
 PPS(min,max,std): 24,36,2.24
 Prof: 409 to 68069, NumProf(t/r): 67660/17069
 ProcTime/Recs: 17:28:30-17:36:44/17069-34137
 MxACQtime: 33ms; DRate: 193.1KB/s; Flags: 0, 0, 0
 Pulse: 275ns, IFilt: 5.0MHz; ppPol: HH HV VV
 TxPol: HHVV, PRF: 20 10 20 10 kHz
 Range: Delay 75m, Spacing 15m, Gates 100
 Ave. Pulses: 84, Rng/Prof Aspect@90m/s: 5.7

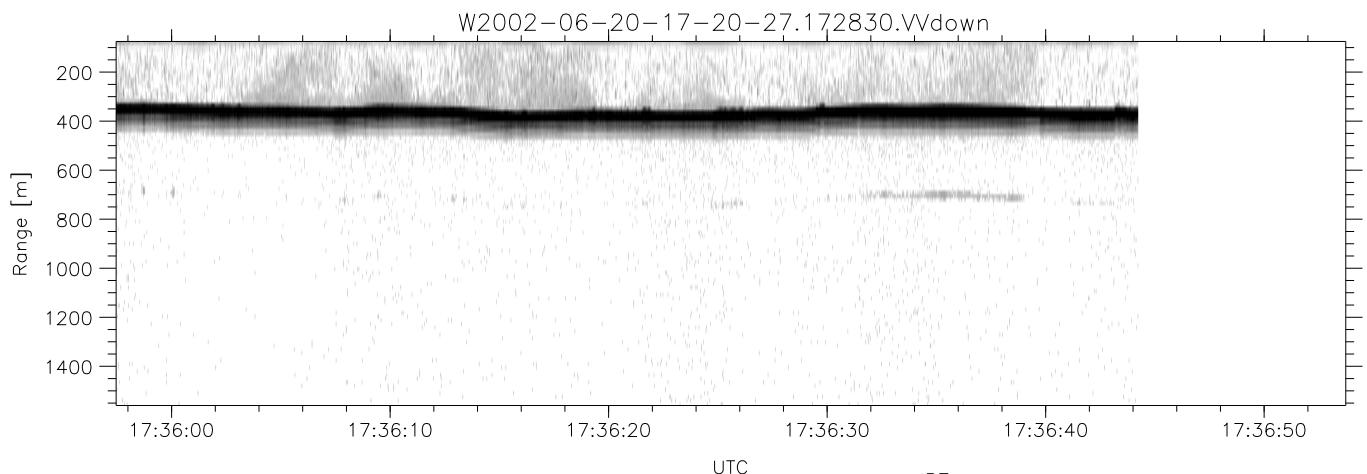
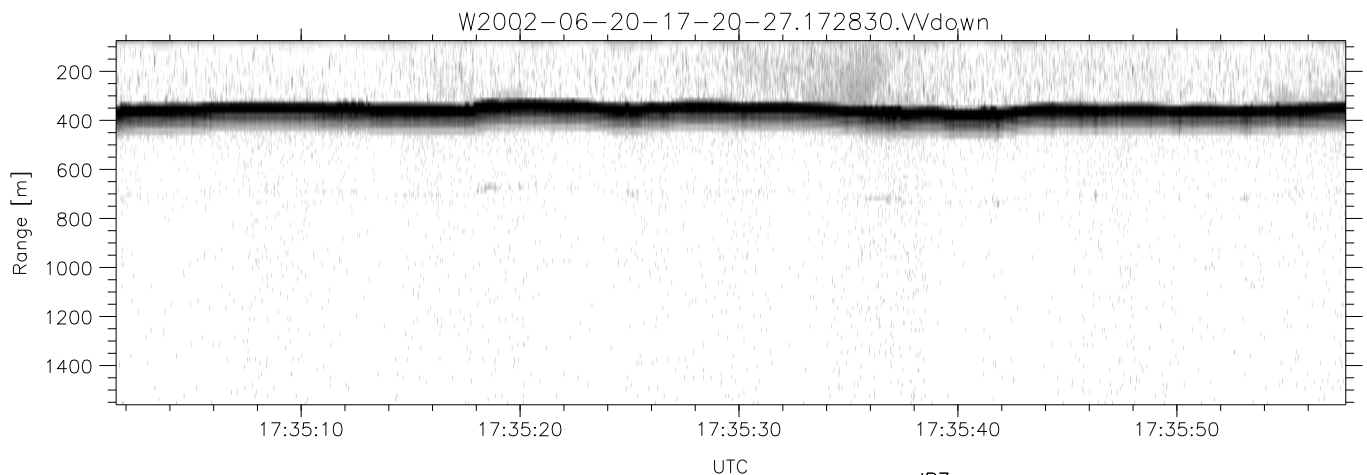
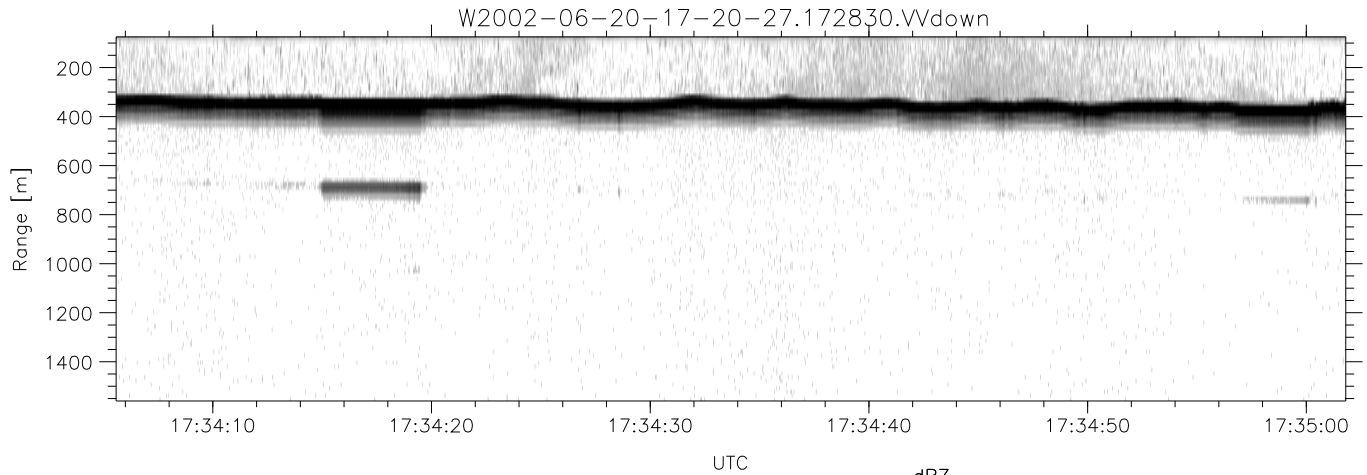
	Min	Max	Mean	Std	Varc%
hhN(dB)	-67.52	-64.20	-65.80	-75.88	9.8
vvN(dB)	-66.62	-62.95	-64.73	-74.75	9.9
hhL(dB)	-18.99	-5.52	-11.35	-12.98	68.8
vvL(dB)	-12.63	-0.94	-7.79	-9.55	66.7
ppN(m/s)	-12.53	12.24	-0.02	4.12	
ppT(m/s)	-98.96	96.69	-0.17	32.57	
hh/vv(dB)	-NaN	45.10	15.54	29.79	2660
vh/hh(dB)	-NaN	-28.94	-33.99	-34.12	97.1
hv/vv(dB)	-NaN	-35.04	-53.82	-46.88	494.
hnjmp(dB)	-2.43	1.94	-0.07	-8.68	13.8
vnjmp(dB)	-2.45	2.68	-0.09	-8.64	14.0



IHOP 2002 (dual-antenna config, modes 1,3,4,7) Data (cal: 49.0,50.0)

W2002-06-20-17-20-27 - PPMAG4
 IRIG:1,UTC: 17:20:16.22 to 17:52:57.71, Dur: 1961s
 TimeLngth: 1961.48s, TimeInt: 28ms (34.5pps)
 TimeCor=-13.0s, DSPDif(mn,min,mx):28,28,326
 PPS(min,max,std): 24,36,2.24
 Prof: 409 to 68069, NumProf(t/r): 67660/17069
 ProcTime/Recs: 17:28:30-17:36:44/17069-34137
 MxACQtime: 33ms; DRate: 193.1KB/s; Flags: 0, 0, 0
 Pulse: 275ns, IFilt: 5.0MHz; ppPol: HH HV VV
 TxPol: HHVV, PRF: 20 10 20 10 kHz
 Range: Delay 75m, Spacing 15m, Gates 100
 Ave. Pulses: 84, Rng/Prof Aspect@90m/s: 5.7

	Min	Max	Mean	Std	Varc%
hhN(dB)	-67.52	-64.20	-65.80	-75.88	9.8
vvN(dB)	-66.62	-62.95	-64.73	-74.75	9.9
hhL(dB)	-18.99	-5.52	-11.35	-12.98	68.8
vvL(dB)	-12.63	-0.94	-7.79	-9.55	66.7
ppN(m/s)	-12.53	12.24	-0.02	4.12	
ppT(m/s)	-98.96	96.69	-0.17	32.57	
hh/vv(dB)	-NaN	45.10	15.54	29.79	2660
vh/hh(dB)	-NaN	-28.94	-33.99	-34.12	97.1
hv/vv(dB)	-NaN	-35.04	-53.82	-46.88	494.
hnjmp(dB)	-2.43	1.94	-0.07	-8.68	13.8
vnjmp(dB)	-2.45	2.68	-0.09	-8.64	14.0



IHOP 2002 (dual-antenna config, modes 1,3,4,7) Data (cal: 49.0,50.0)

W2002-06-20-17-20-27 - PPMAG4
 IRIG:1,UTC: 17:20:16.22 to 17:52:57.71, Dur: 1961s
 TimeLngth: 1961.48s, TimeInt: 28ms (34.5pps)
 TimeCor=-13.0s, DSPDif(mn,min,mx):28,28,326
 PPS(min,max,std): 24,36,2.24
 Prof: 409 to 68069, NumProf(t/r): 67660/17069
 ProcTime/Recs: 17:28:30-17:36:44/17069-34137
 MxACQtime: 33ms; DRate: 193.1KB/s; Flags: 0, 0, 0
 Pulse: 275ns, IFfilt: 5.0MHz; ppPol: HH HV VV
 TxPol: HHVV, PRF: 20 10 20 10 kHz
 Range: Delay 75m, Spacing 15m, Gates 100
 Ave. Pulses: 84, Rng/Prof Aspect@90m/s: 5.7

	Min	Max	Mean	Std	Varc%
hhN(dB)	-67.52	-64.20	-65.80	-75.88	9.8
vvN(dB)	-66.62	-62.95	-64.73	-74.75	9.9
hhL(dB)	-18.99	-5.52	-11.35	-12.98	68.8
vvL(dB)	-12.63	-0.94	-7.79	-9.55	66.7
ppN(m/s)	-12.53	12.24	-0.02	4.12	
ppT(m/s)	-98.96	96.69	-0.17	32.57	
hh/vv(dB)	-NaN	45.10	15.54	29.79	2660
vh/hh(dB)	-NaN	-28.94	-33.99	-34.12	97.1
hv/vv(dB)	-NaN	-35.04	-53.82	-46.88	494.
hnjmp(dB)	-2.43	1.94	-0.07	-8.68	13.8
vnjmp(dB)	-2.45	2.68	-0.09	-8.64	14.0