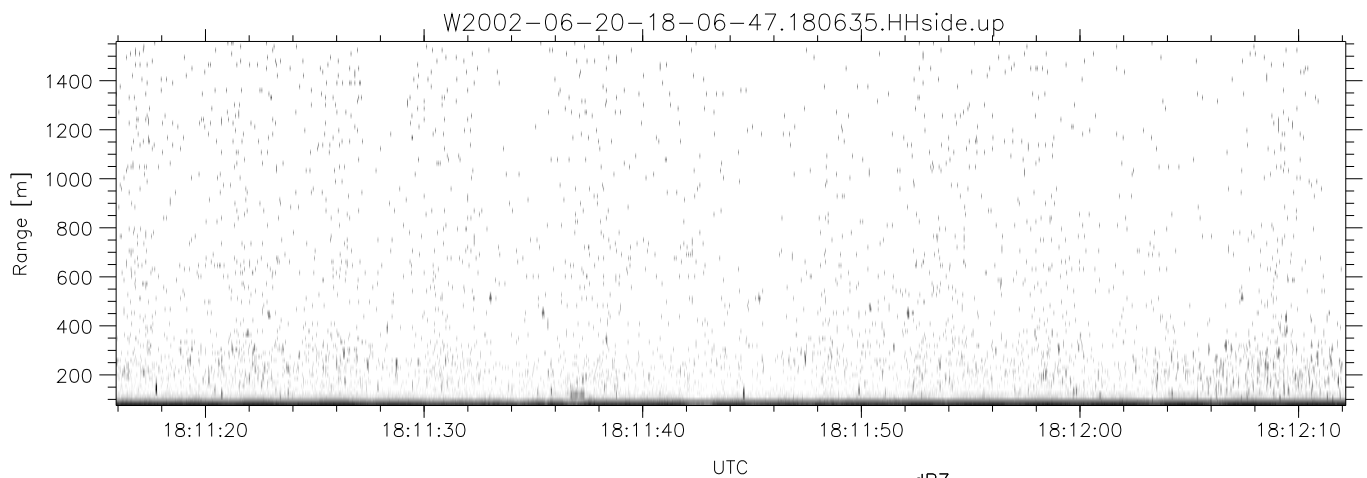
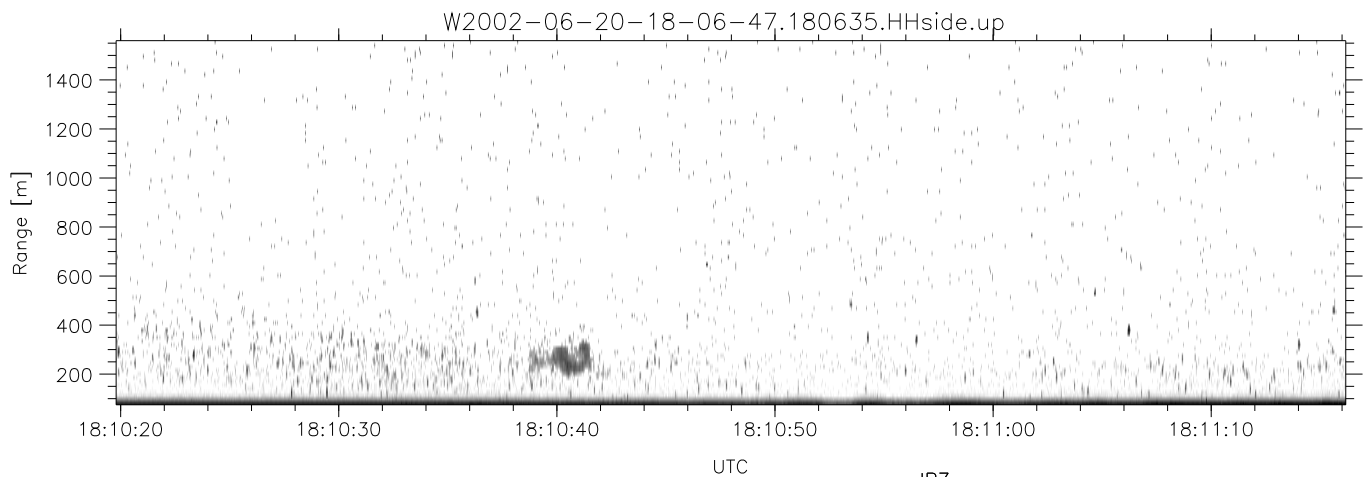
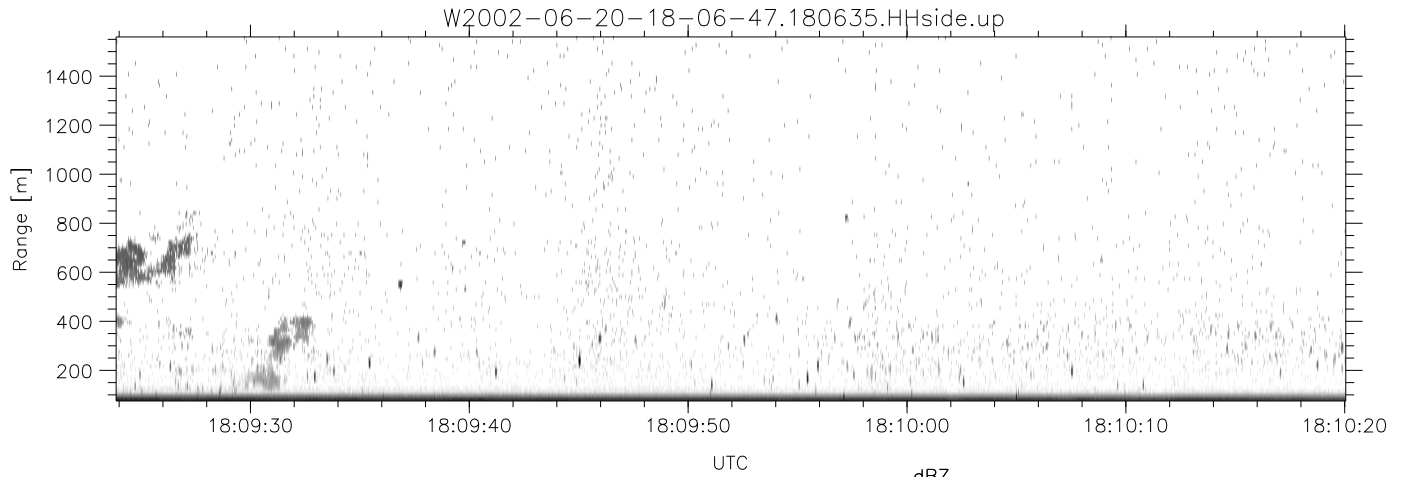


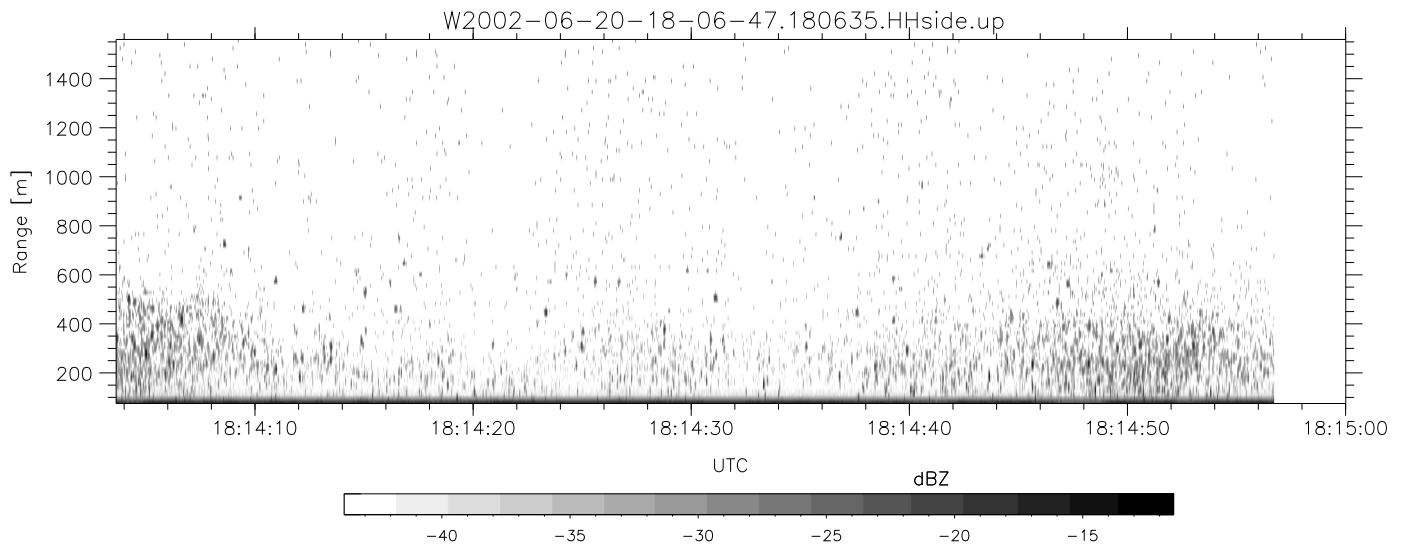
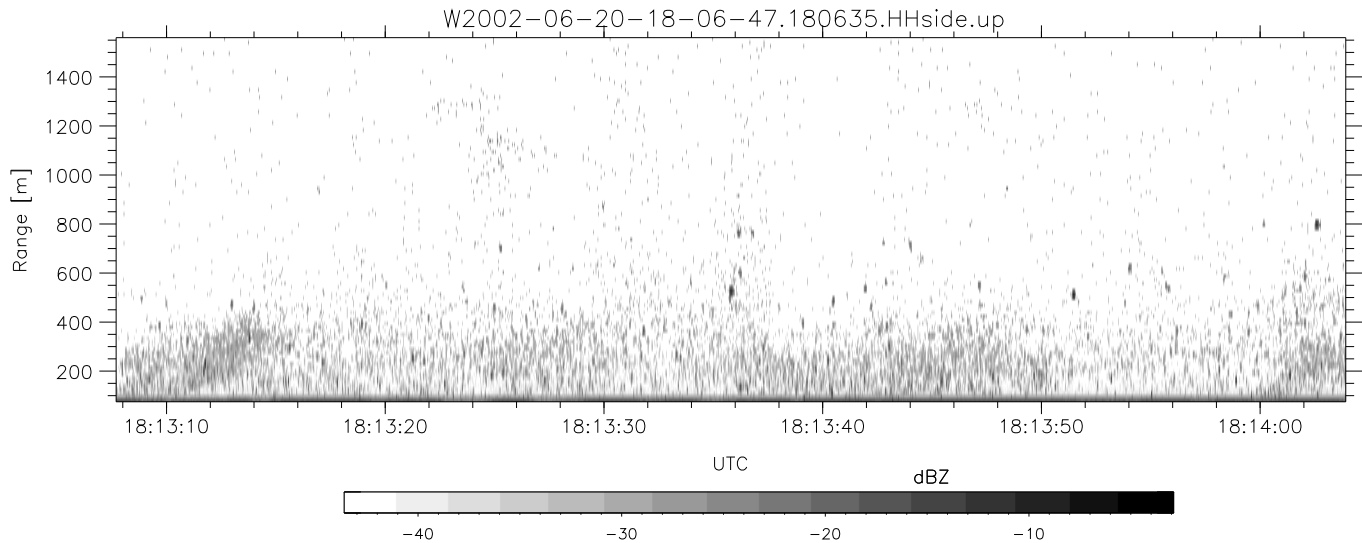
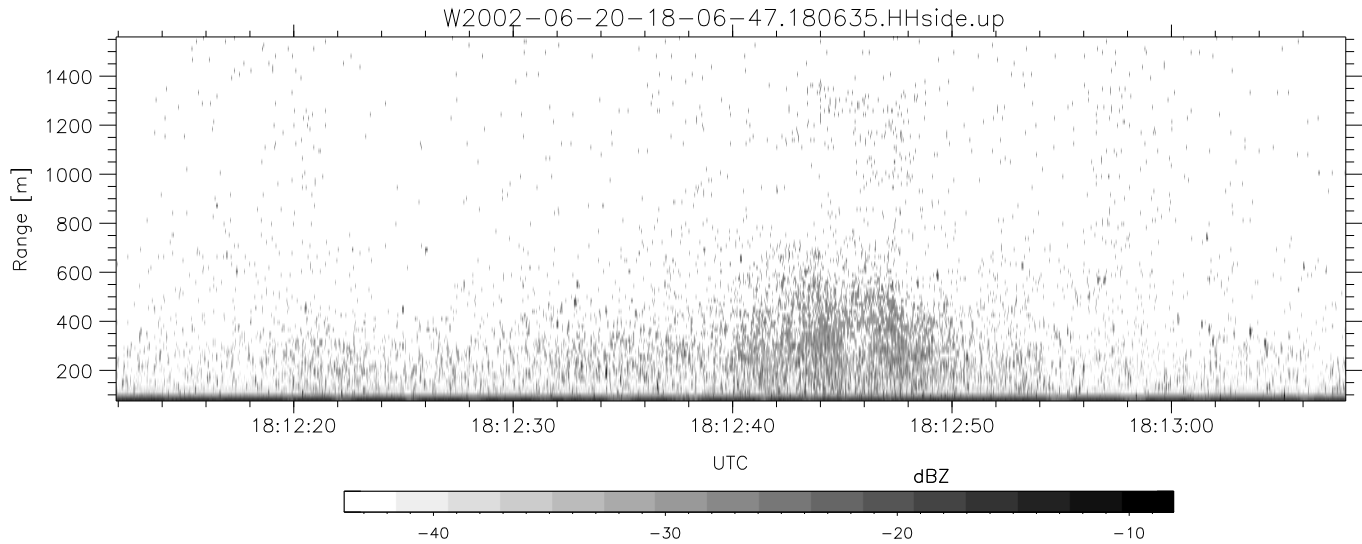
IHOP 2002 (dual-antenna config, modes 1,3,4,7) Data (cal: 49.0,50.0)

W2002-06-20-18-06-47 - PPMAG4	Min	Max	Mean	Std	Varc%
IRIG:1,UTC: 18:06:35.77 to 18:26:38.28, Dur: 1203s	-67.70	-64.38	-65.93	-76.00	9.8
TimeLngth: 1202.51s, TimeInt: 29ms (34.1pps)	-66.96	-63.19	-64.84	-74.82	10.0
TimeCor=-13.0s, DSPDif(mn,min,mx):29,28,368	-16.86	-2.91	-6.43	-10.51	39.1
PPS(min,max,std): 22,36,2.36	-13.28	0.02	-2.83	-6.74	40.7
Prof: 321 to 41305, NumProf(t/r): 40984/17069	ppN(m/s)	-12.60	12.62	-0.03	4.15
ProcTime/Recs: 18:06:35-18:14:56/0-17068	ppT(m/s)	-99.53	99.68	-0.22	32.82
MxACQtime: 33ms; DRate: 190.8KB/s; Flags: 0, 0, 0	hh/vv(dB)	-NaN	47.96	16.70	33.62 4918
Pulse: 275ns, IFilt: 5.0MHz; ppPol: HH HV VV	vh/hh(dB)	-99.00	-99.00	-99.00	-99.00
TxPol: HHVV, PRF: 20 10 20 10 kHz	hv/vv(dB)	-NaN	-34.66	-55.17	-46.01 823.
Range: Delay 75m, Spacing 15m, Gates 100	hn/jmp(dB)	-2.31	2.23	0.16	-8.42 13.9
Ave. Pulses: 84, Rng/Prof Aspect@90m/s: 5.7	vn/jmp(dB)	-2.32	2.70	0.18	-8.35 14.0



IHOP 2002 (dual-antenna config, modes 1,3,4,7) Data (cal: 49.0,50.0)

W2002-06-20-18-06-47 - PPMAG4	Min	Max	Mean	Std	Varc%	
IRIG:1,UTC: 18:06:35.77 to 18:26:38.28, Dur: 1203s	hhN(dB)	-67.70	-64.38	-65.93	-76.00	9.8
TimeLngth: 1202.51s, TimeInt: 29ms (34.1pps)	vvN(dB)	-66.96	-63.19	-64.84	-74.82	10.0
TimeCor=-13.0s, DSPDif(mn,min,mx):29,28,368	hhL(dB)	-16.86	-2.91	-6.43	-10.51	39.1
PPS(min,max,std): 22,36,2.36	vvL(dB)	-13.28	0.02	-2.83	-6.74	40.7
Prof: 321 to 41305, NumProf(t/r): 40984/17069	ppN(m/s)	-12.60	12.62	-0.03	4.15	
ProcTime/Recs: 18:06:35-18:14:56/0-17068	ppT(m/s)	-99.53	99.68	-0.22	32.82	
MxACQtime: 33ms; DRate: 190.8KB/s; Flags: 0, 0, 0	hh/vv(dB)	-NaN	47.96	16.70	33.62	4918
Pulse: 275ns, IFilt: 5.0MHz; ppPol: HH HV VV	vh/hh(dB)	-99.00	-99.00	-99.00	-99.00	-99.
TxPol: HHVV, PRF: 20 10 20 10 kHz	hv/vv(dB)	-NaN	-34.66	-55.17	-46.01	823.
Range: Delay 75m, Spacing 15m, Gates 100	hnjmp(dB)	-2.31	2.23	0.16	-8.42	13.9
Ave. Pulses: 84, Rng/Prof Aspect@90m/s: 5.7	vnjmp(dB)	-2.32	2.70	0.18	-8.35	14.0



IHOP 2002 (dual-antenna config, modes 1,3,4,7) Data (cal: 49.0,50.0)

	Min	Max	Mean	Std	Varc%	
W2002-06-20-18-06-47 - PPMAG4						
IRIG:1,UTC: 18:06:35.77 to 18:26:38.28, Dur: 1203s	hhN (dB)	-67.70	-64.38	-65.93	-76.00	9.8
TimeLngth: 1202.51s, TimeInt: 29ms (34.1pps)	vvN (dB)	-66.96	-63.19	-64.84	-74.82	10.0
TimeCor=-13.0s, DSPDif(mn,min,mx):29,28,368	hhL (dB)	-16.86	-2.91	-6.43	-10.51	39.1
PPS(min,max,std): 22,36,2.36	vvL (dB)	-13.28	0.02	-2.83	-6.74	40.7
Prof: 321 to 41305, NumProf(t/r): 40984/17069	ppN (m/s)	-12.60	12.62	-0.03	4.15	
ProcTime/Recs: 18:06:35-18:14:56/0-17068	ppT (m/s)	-99.53	99.68	-0.22	32.82	
MxAcQtime: 33ms; DRate: 190.8KB/s; Flags: 0, 0, 0	hh/vv (dB)	-NaN	47.96	16.70	33.62	4918
Pulse: 275ns, IFilt: 5.0MHz; ppPol: HH HV VV	vh/hh (dB)	-99.00	-99.00	-99.00	-99.00	-99.0
TxPol: HHVV, PRF: 20 10 20 10 kHz	hv/vv (dB)	-NaN	-34.66	-55.17	-46.01	823.0
Range: Delay 75m, Spacing 15m, Gates 100	hn/jmp (dB)	-2.31	2.23	0.16	-8.42	13.9
Ave. Pulses: 84, Rng/Prof Aspect@90m/s: 5.7	vn/jmp (dB)	-2.32	2.70	0.18	-8.35	14.0