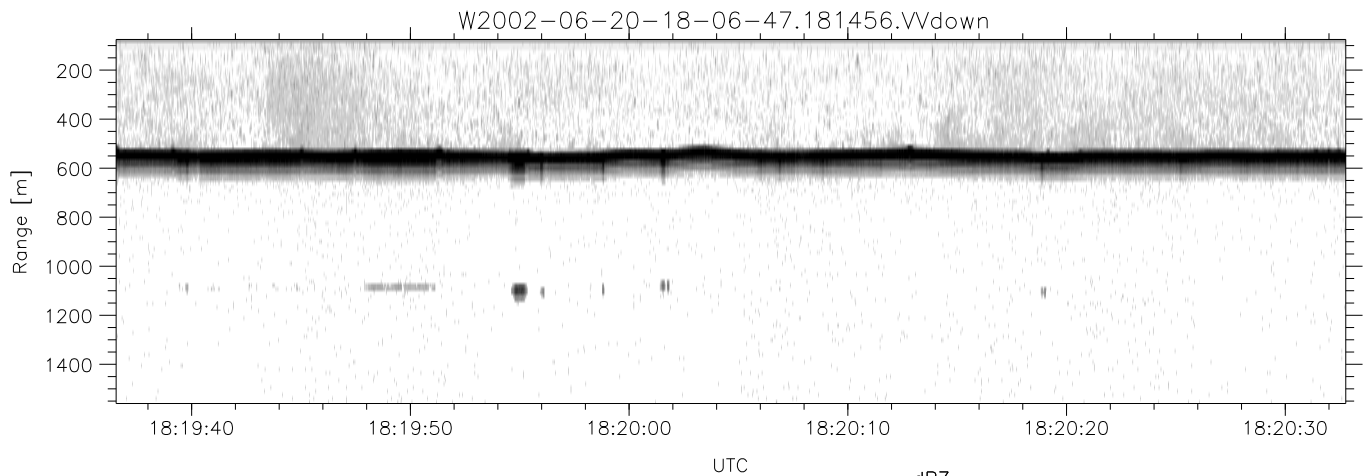
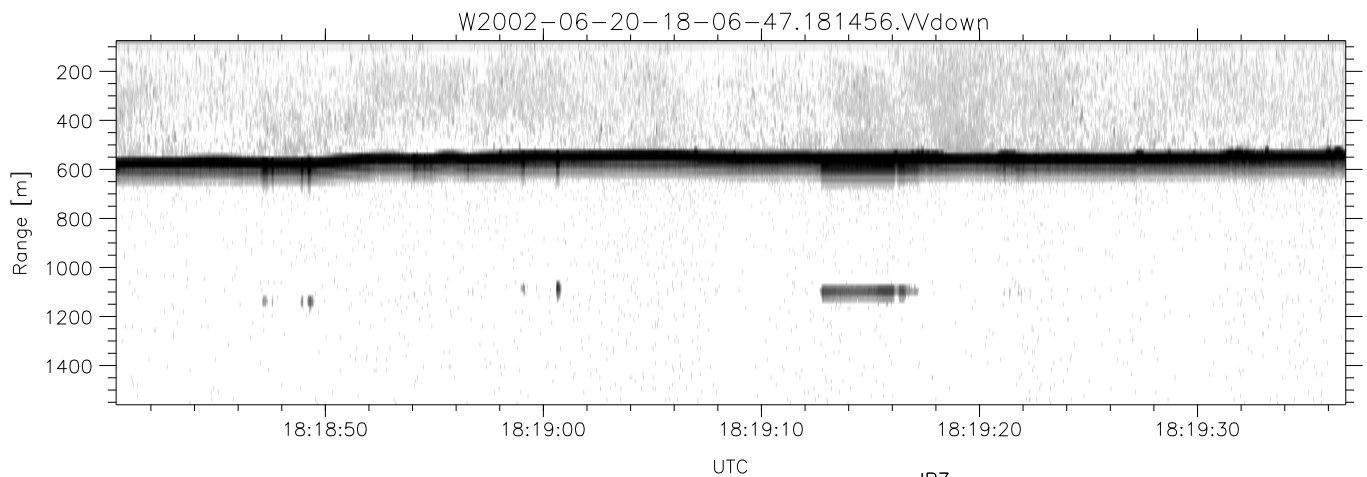
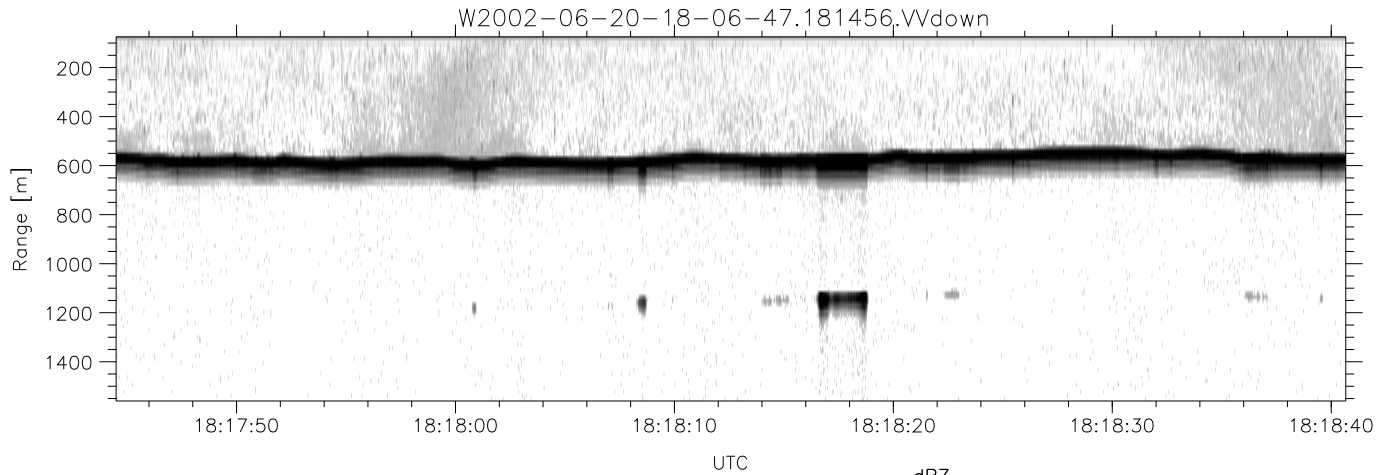


IHOP 2002 (dual-antenna config, modes 1,3,4,7) Data (cal: 49.0,50.0)

W2002-06-20-18-06-47 - PPMAG4
 IRIG:1,UTC: 18:06:35.77 to 18:26:38.28, Dur: 1203s
 TimeLngth: 1202.51s, TimeInt: 29ms (34.1pps)
 TimeCor=-13.0s, DSPDif(mn,min,mx):29,28,329
 PPS(min,max,std): 24,36,2.36
 Prof: 321 to 41305, NumProf(t/r): 40984/17069
 ProcTime/Recs: 18:14:56-18:23:17/17069-34137
 MxAcQtime: 33ms; DRate: 190.8KB/s; Flags: 0, 0, 0
 Pulse: 275ns, IFfilt: 5.0MHz; ppPol: HH HV VV
 TxPol: HHVV, PRF: 20 10 20 10 kHz
 Range: Delay 75m, Spacing 15m, Gates 100
 Ave. Pulses: 84, Rng/Prof Aspect@90m/s: 5.7

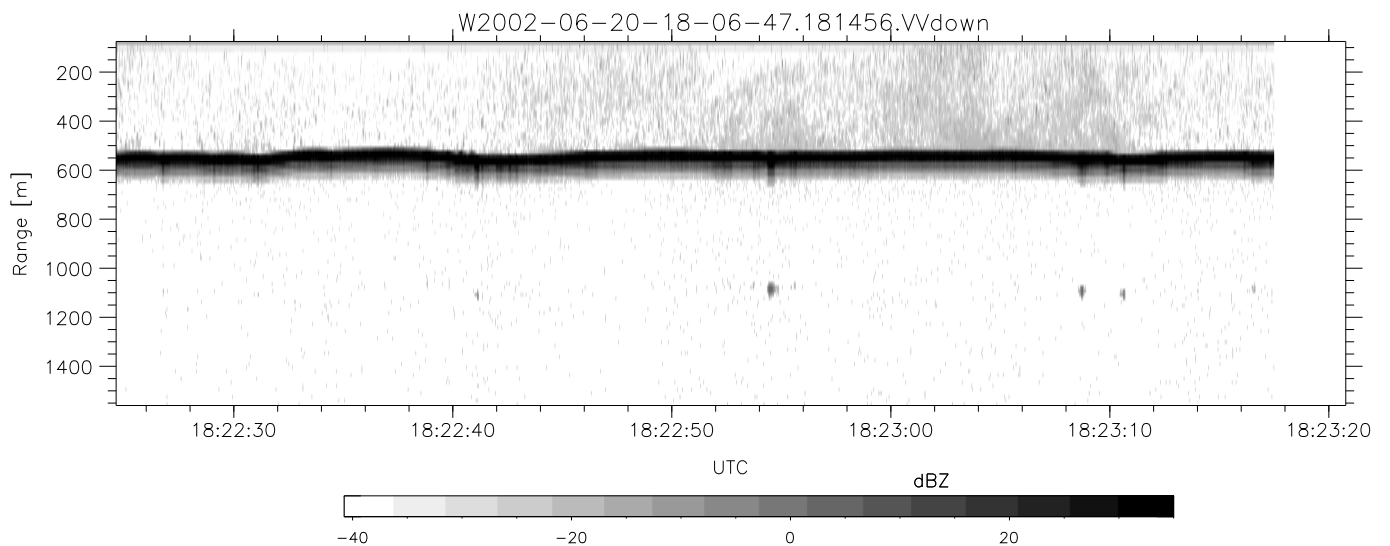
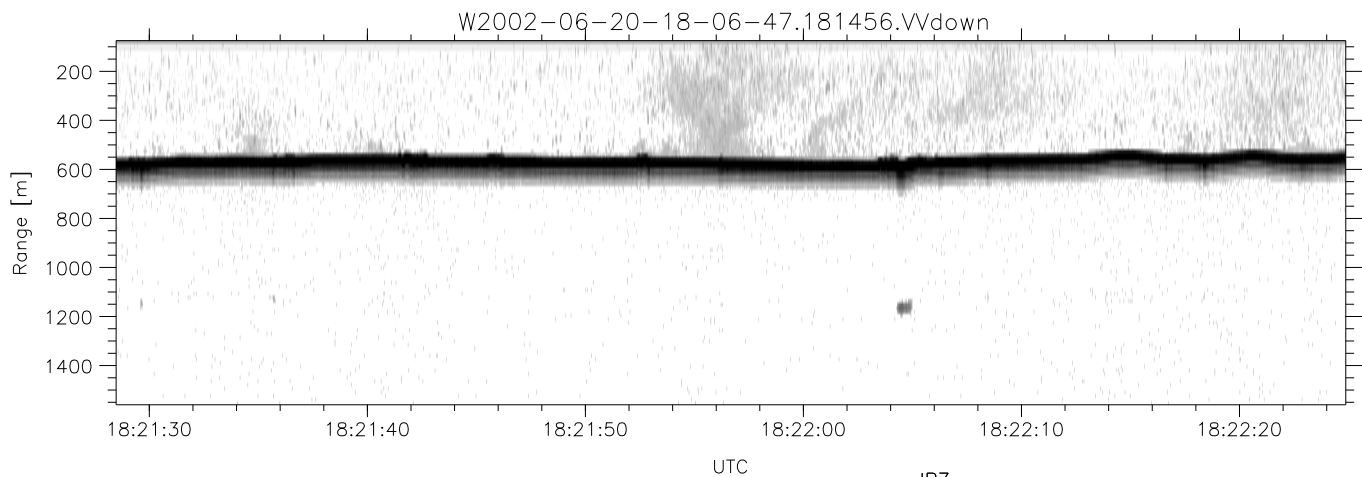
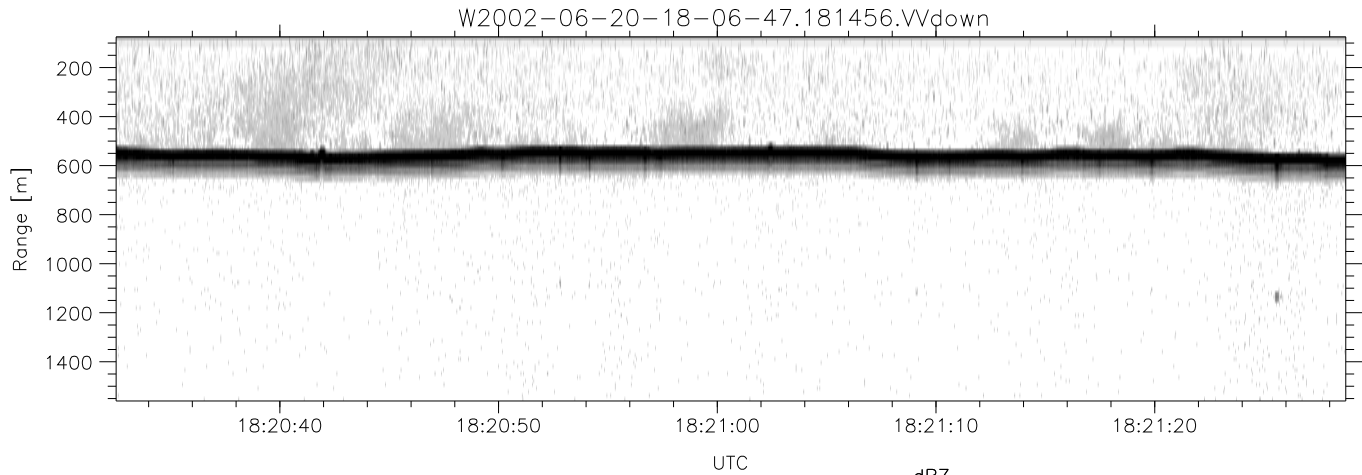
	Min	Max	Mean	Std	Varc%
hhN(dB)	-67.59	-64.43	-65.92	-76.01	9.8
vvN(dB)	-66.53	-63.45	-64.87	-74.96	9.8
hhL(dB)	-9.11	-4.59	-6.40	-15.12	13.4
vvL(dB)	-6.26	-1.23	-3.65	-12.07	14.4
ppN(m/s)	-12.84	12.82	-0.07	4.13	
ppT(m/s)	-101.4	101.30	-0.55	32.63	
hh/vv(dB)	-NaN	55.11	20.19	36.21	4001
vh/hh(dB)	-NaN	-30.72	-35.18	-35.16	100.
hv/vv(dB)	-NaN	-26.53	-53.09	-45.24	610.
hnjmp(dB)	-2.27	1.96	-0.07	-8.71	13.7
vnjmp(dB)	-2.42	1.89	-0.08	-8.68	13.8



IHOP 2002 (dual-antenna config, modes 1,3,4,7) Data (cal: 49.0,50.0)

W2002-06-20-18-06-47 - PPMAG4
 IRIG:1,UTC: 18:06:35.77 to 18:26:38.28, Dur: 1203s
 TimeLngth: 1202.51s, TimeInt: 29ms (34.1pps)
 TimeCor=-13.0s, DSPDif(mn,min,mx):29,28,329
 PPS(min,max,std): 24,36,2.36
 Prof: 321 to 41305, NumProf(t/r): 40984/17069
 ProcTime/Recs: 18:14:56-18:23:17/17069-34137
 MxAcQtime: 33ms; DRate: 190.8KB/s; Flags: 0, 0, 0
 Pulse: 275ns, IFfilt: 5.0MHz; ppPol: HH HV VV
 TxPol: HHVV, PRF: 20 10 20 10 kHz
 Range: Delay 75m, Spacing 15m, Gates 100
 Ave. Pulses: 84, Rng/Prof Aspect@90m/s: 5.7

	Min	Max	Mean	Std	Varc%
hhN(dB)	-67.59	-64.43	-65.92	-76.01	9.8
vvN(dB)	-66.53	-63.45	-64.87	-74.96	9.8
hhL(dB)	-9.11	-4.59	-6.40	-15.12	13.4
vvL(dB)	-6.26	-1.23	-3.65	-12.07	14.4
ppN(m/s)	-12.84	12.82	-0.07	4.13	
ppT(m/s)	-101.4	101.30	-0.55	32.63	
hh/vv(dB)	-NaN	55.11	20.19	36.21	4001
vh/hh(dB)	-NaN	-30.72	-35.18	-35.16	100.
hv/vv(dB)	-NaN	-26.53	-53.09	-45.24	610.
hnjmp(dB)	-2.27	1.96	-0.07	-8.71	13.7
vnjmp(dB)	-2.42	1.89	-0.08	-8.68	13.8



IHOP 2002 (dual-antenna config, modes 1,3,4,7) Data (cal: 49.0,50.0)

W2002-06-20-18-06-47 - PPMAG4
 IRIG:1,UTC: 18:06:35.77 to 18:26:38.28, Dur: 1203s
 TimeLngth: 1202.51s, TimeInt: 29ms (34.1pps)
 TimeCor=-13.0s, DSPDif(mn,min,mx):29,28,329
 PPS(min,max,std): 24,36,2.36
 Prof: 321 to 41305, NumProf(t/r): 40984/17069
 ProcTime/Recs: 18:14:56-18:23:17/17069-34137
 MxACQtime: 33ms; DRate: 190.8KB/s; Flags: 0, 0, 0
 Pulse: 275ns, IFfilt: 5.0MHz; ppPol: HH HV VV
 TxPol: HHVV, PRF: 20 10 20 10 kHz
 Range: Delay 75m, Spacing 15m, Gates 100
 Ave. Pulses: 84, Rng/Prof Aspect@90m/s: 5.7

	Min	Max	Mean	Std	Varc%
hhN(dB)	-67.59	-64.43	-65.92	-76.01	9.8
vvN(dB)	-66.53	-63.45	-64.87	-74.96	9.8
hhL(dB)	-9.11	-4.59	-6.40	-15.12	13.4
vvL(dB)	-6.26	-1.23	-3.65	-12.07	14.4
ppN(m/s)	-12.84	12.82	-0.07	4.13	
ppT(m/s)	-101.4	101.30	-0.55	32.63	
hh/vv(dB)	-NaN	55.11	20.19	36.21	4001
vh/hh(dB)	-NaN	-30.72	-35.18	-35.16	100.
hv/vv(dB)	-NaN	-26.53	-53.09	-45.24	610.
hnjmp(dB)	-2.27	1.96	-0.07	-8.71	13.7
vnjmp(dB)	-2.42	1.89	-0.08	-8.68	13.8