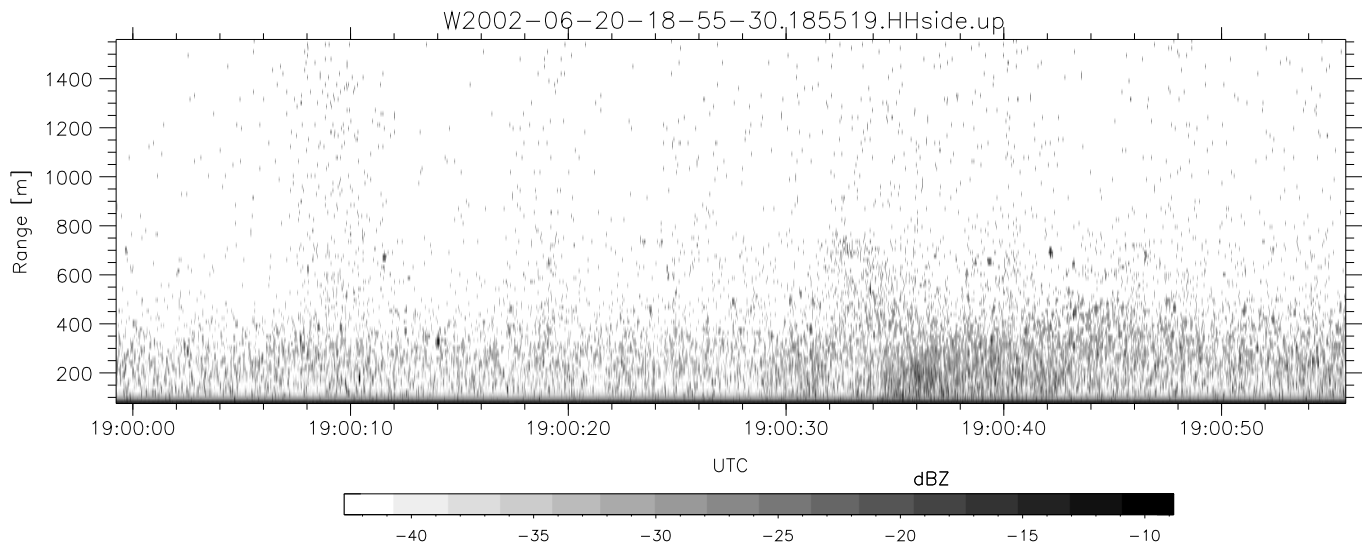
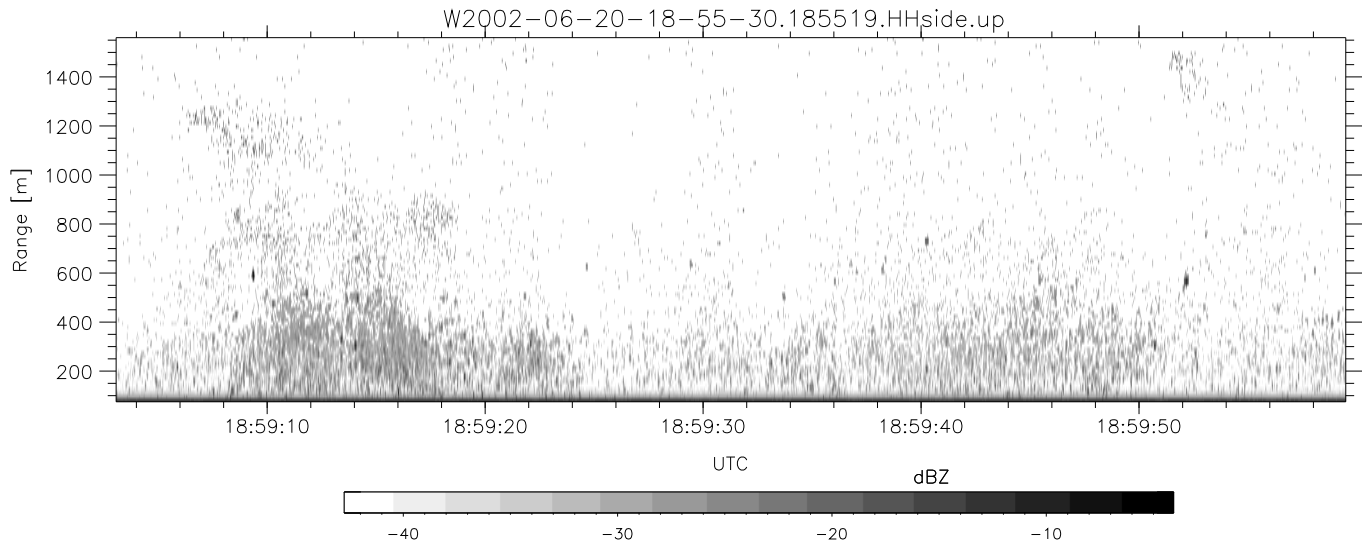
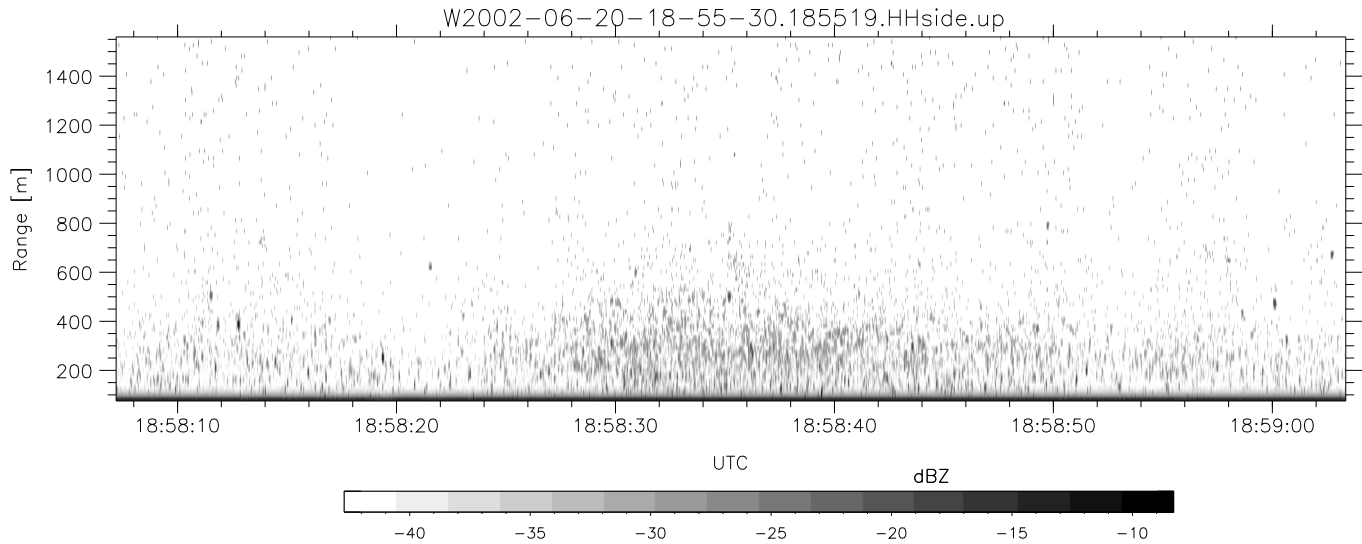


IHOP 2002 (dual-antenna config, modes 1,3,4,7) Data (cal: 49.0,50.0)

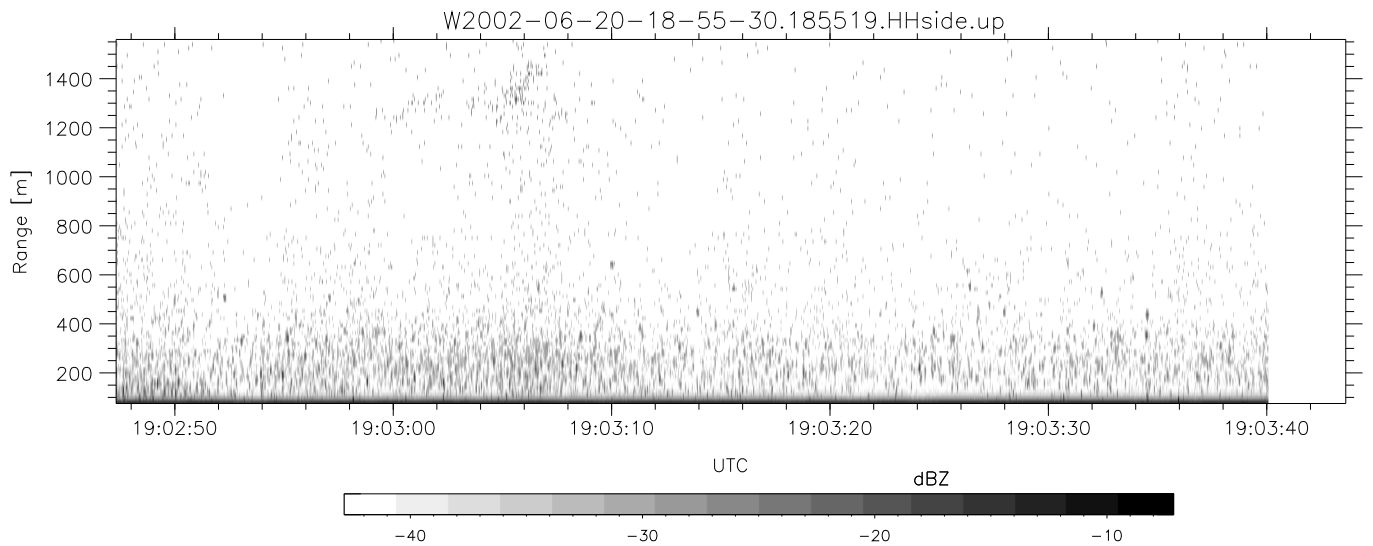
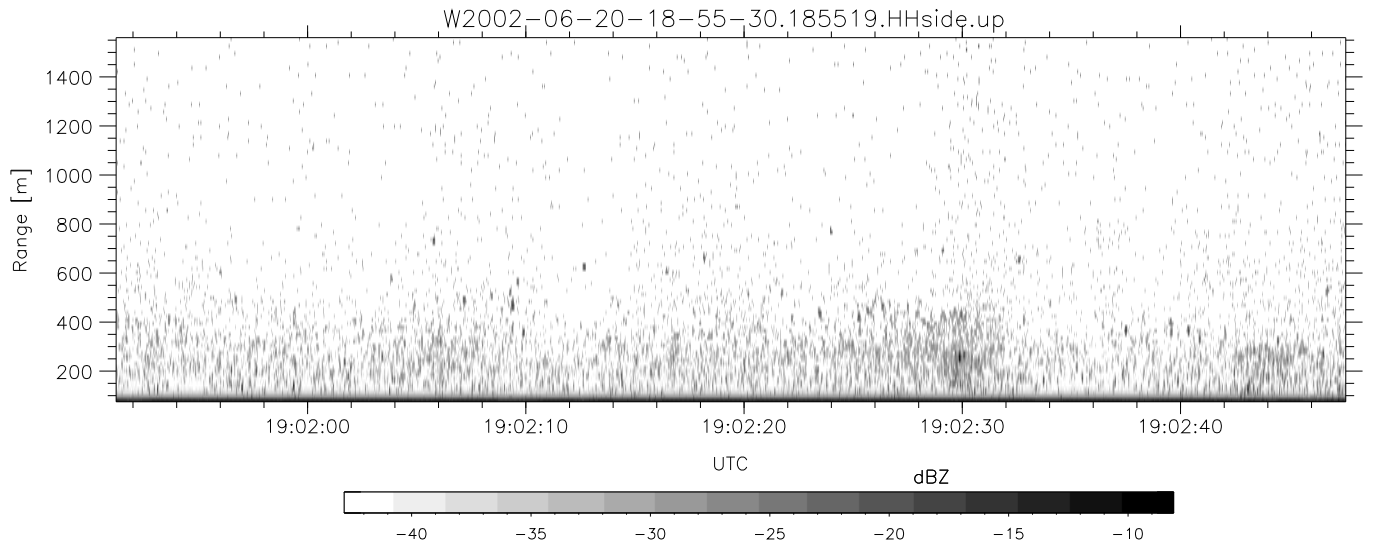
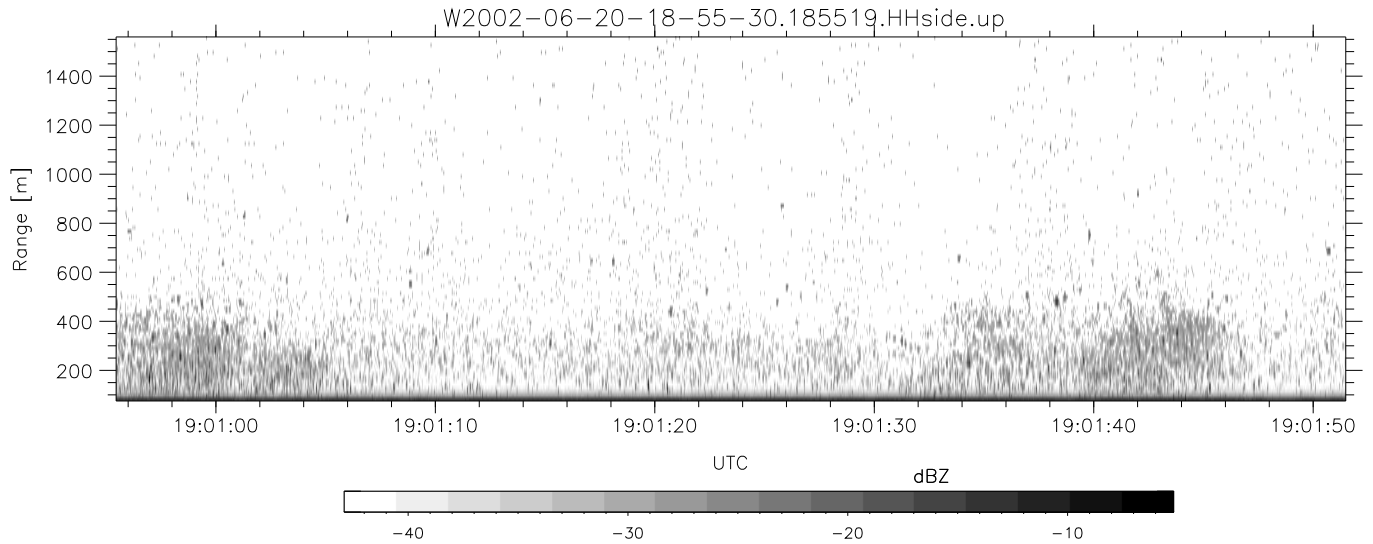
W2002-06-20-18-55-30 - PPMAG4
 IRIG:1,UTC: 18:55:19.09 to 19:21:11.31, Dur: 1552s
 TimeLngth: 1552.22s, TimeInt: 29ms (34.1pps)
 TimeCor=-13.0s, DSPDif(mn,min,mx):29,28,312
 PPS(min,max,std): 15,36,2.48
 Prof: 354 to 53272, NumProf(t/r): 52918/17069
 ProcTime/Recs: 18:55:19-19:03:40/0-17068
 MxACQtime: 33ms; DRate: 190.8KB/s; Flags: 0, 0, 0
 Pulse: 275ns, IFilt: 5.0MHz; ppPol: HH HV VV
 TxPol: HHVV, PRF: 20 10 20 10 kHz
 Range: Delay 75m, Spacing 15m, Gates 100
 Ave. Pulses: 84, Rng/Prof Aspect@90m/s: 5.7

	Min	Max	Mean	Std	Varc%
hhN(dB)	-67.83	-64.62	-66.08	-76.11	9.9
vvN(dB)	-66.80	-63.58	-65.05	-75.06	10.0
hhL(dB)	-8.55	-3.44	-4.53	-13.39	13.0
vvL(dB)	-7.41	-2.17	-3.73	-11.72	15.9
ppN(m/s)	-12.22	12.63	-0.05	4.15	
ppT(m/s)	-96.52	99.80	-0.36	32.79	
hh/vv(dB)	-NaN	45.90	16.17	30.54	2733
vh/hh(dB)	-NaN	-29.20	-33.62	-33.95	92.7
hv/vv(dB)	-NaN	-32.27	-54.35	-45.58	753.
hnjmp(dB)	-2.08	2.20	-0.07	-8.59	14.1
vnjmp(dB)	-2.73	2.32	-0.09	-8.58	14.2



IHOP 2002 (dual-antenna config, modes 1,3,4,7) Data (cal: 49.0,50.0)

	Min	Max	Mean	Std	Varc%	
W2002-06-20-18-55-30 - PPMAG4						
IRIG:1,UTC: 18:55:19.09 to 19:21:11.31, Dur: 1552s	hhN(dB)	-67.83	-64.62	-66.08	-76.11	9.9
TimeLngth: 1552.22s, TimeInt: 29ms (34.1pps)	vvN(dB)	-66.80	-63.58	-65.05	-75.06	10.0
TimeCor=-13.0s, DSPDif(mn,min,mx):29,28,312	hhL(dB)	-8.55	-3.44	-4.53	-13.39	13.0
PPS(min,max,std): 15,36,2.48	vvL(dB)	-7.41	-2.17	-3.73	-11.72	15.9
Prof: 354 to 53272, NumProf(t/r): 52918/17069	ppN(m/s)	-12.22	12.63	-0.05	4.15	
ProcTime/Recs: 18:55:19-19:03:40/0-17068	ppT(m/s)	-96.52	99.80	-0.36	32.79	
MxAcQtime: 33ms; DRate: 190.8KB/s; Flags: 0, 0, 0	hh/vv(dB)	-NaN	45.90	16.17	30.54	2733
Pulse: 275ns, IFilt: 5.0MHz; ppPol: HH HV VV	vh/hh(dB)	-NaN	-29.20	-33.62	-33.95	92.7
TxPol: HHVV, PRF: 20 10 20 10 kHz	hv/vv(dB)	-NaN	-32.27	-54.35	-45.58	753.
Range: Delay 75m, Spacing 15m, Gates 100	hn_jmp(dB)	-2.08	2.20	-0.07	-8.59	14.1
Ave. Pulses: 84, Rng/Prof Aspect@90m/s: 5.7	vn_jmp(dB)	-2.73	2.32	-0.09	-8.58	14.2



IHOP 2002 (dual-antenna config, modes 1,3,4,7) Data (cal: 49.0,50.0)

W2002-06-20-18-55-30 - PPMAG4
 IRIG:1,UTC: 18:55:19.09 to 19:21:11.31, Dur: 1552s
 TimeLngth: 1552.22s, TimeInt: 29ms (34.1pps)
 TimeCor=-13.0s, DSPDif(mn,min,mx):29,28,312
 PPS(min,max,std): 15,36,2.48
 Prof: 354 to 53272, NumProf(t/r): 52918/17069
 ProcTime/Recs: 18:55:19-19:03:40/0-17068
 MxACQtime: 33ms; DRate: 190.8KB/s; Flags: 0, 0, 0
 Pulse: 275ns, IFfilt: 5.0MHz; ppPol: HH HV VV
 TxPol: HHVV, PRF: 20 10 20 10 kHz
 Range: Delay 75m, Spacing 15m, Gates 100
 Ave. Pulses: 84, Rng/Prof Aspect@90m/s: 5.7

	Min	Max	Mean	Std	Varc%
hhN(dB)	-67.83	-64.62	-66.08	-76.11	9.9
vvN(dB)	-66.80	-63.58	-65.05	-75.06	10.0
hhL(dB)	-8.55	-3.44	-4.53	-13.39	13.0
vvL(dB)	-7.41	-2.17	-3.73	-11.72	15.9
ppN(m/s)	-12.22	12.63	-0.05	4.15	
ppT(m/s)	-96.52	99.80	-0.36	32.79	
hh/vv(dB)	-NaN	45.90	16.17	30.54	2733
vh/hh(dB)	-NaN	-29.20	-33.62	-33.95	92.7
hv/vv(dB)	-NaN	-32.27	-54.35	-45.58	753.
hnjmp(dB)	-2.08	2.20	-0.07	-8.59	14.1
vnjmp(dB)	-2.73	2.32	-0.09	-8.58	14.2