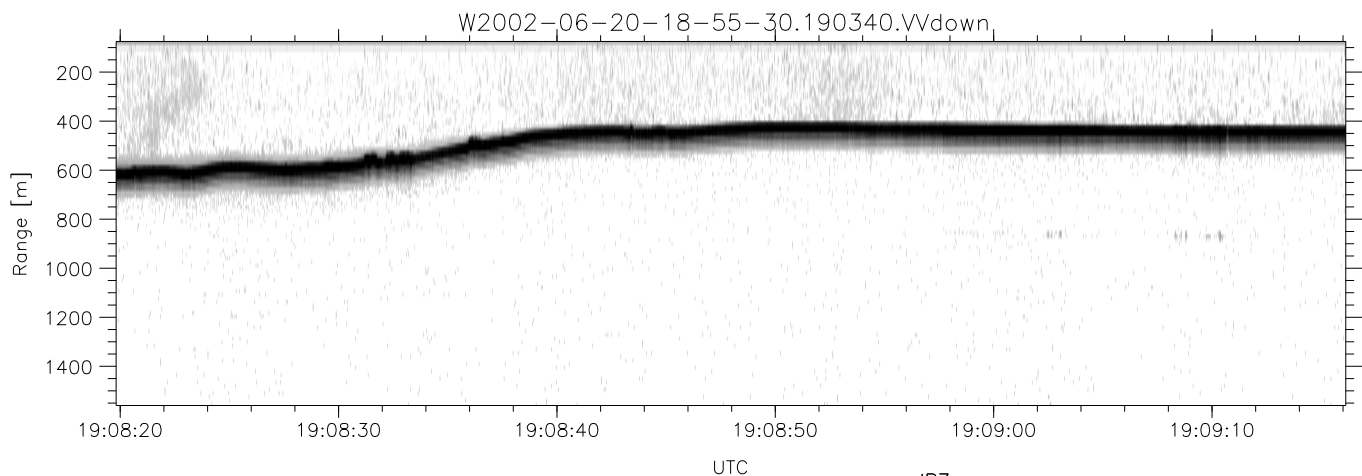
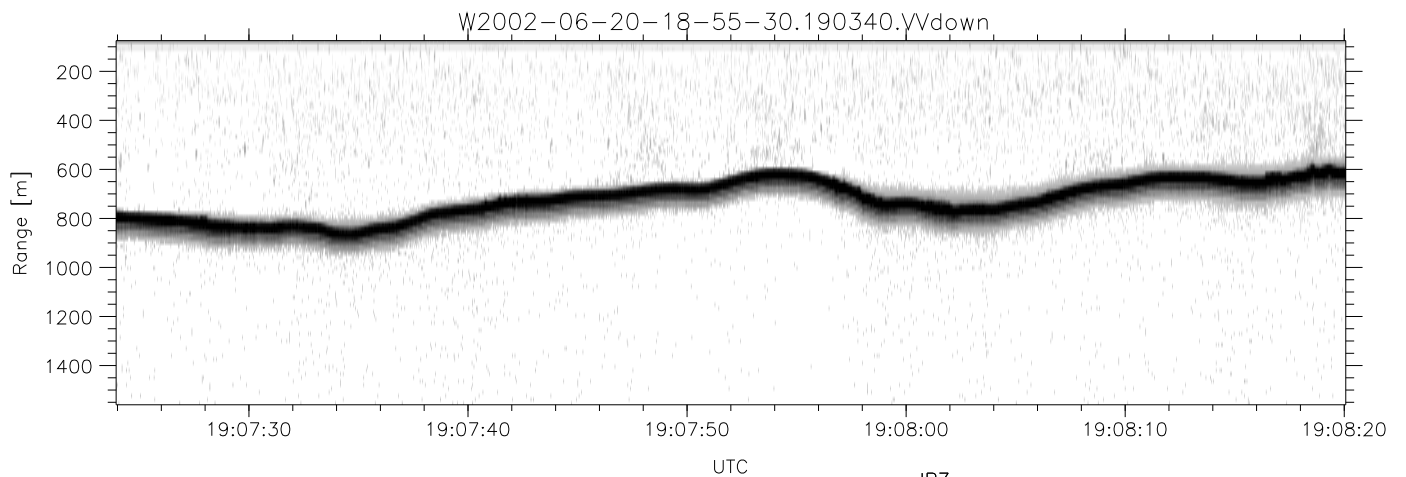
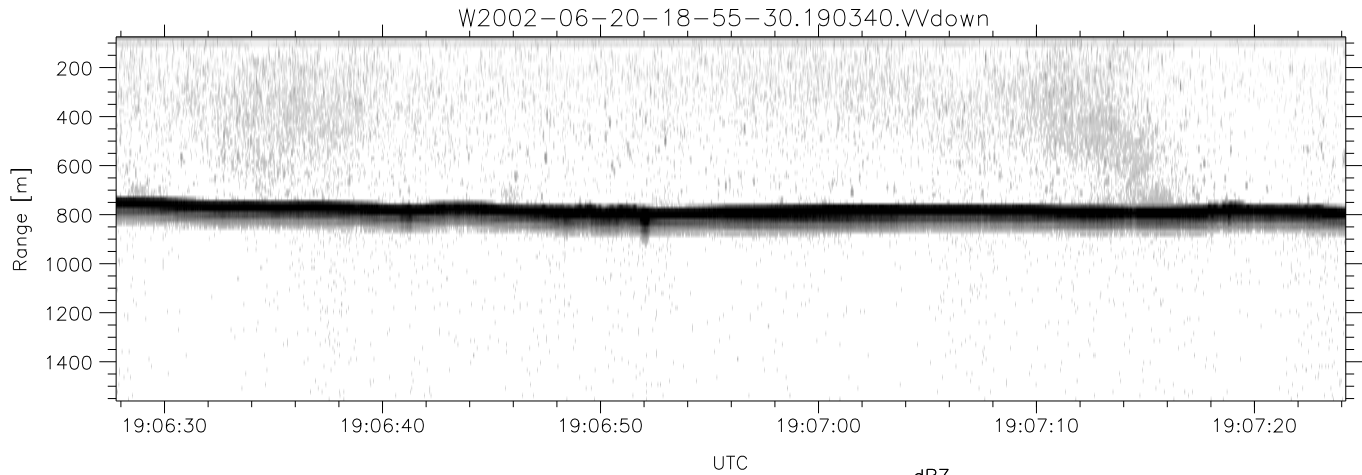


IHOP 2002 (dual-antenna config, modes 1,3,4,7) Data (cal: 49.0,50.0)

W2002-06-20-18-55-30 - PPMAG4
 IRIG:1,UTC: 18:55:19.09 to 19:21:11.31, Dur: 1552s
 TimeLngth: 1552.22s, TimeInt: 29ms (34.1pps)
 TimeCor=-13.0s, DSPDif(mn,min,mx):29,28,363
 PPS(min,max,std): 23,36,2.29
 Prof: 354 to 53272, NumProf(t/r): 52918/17069
 ProcTime/Recs: 19:03:40-19:12:00/17069-34137
 MxAcQtime: 33ms; DRate: 190.8KB/s; Flags: 0, 0, 0
 Pulse: 275ns, IFilt: 5.0MHz; ppPol: HH HV VV
 TxPol: HHVV, PRF: 20 10 20 10 kHz
 Range: Delay 75m, Spacing 15m, Gates 100
 Ave. Pulses: 84, Rng/Prof Aspect@90m/s: 5.7

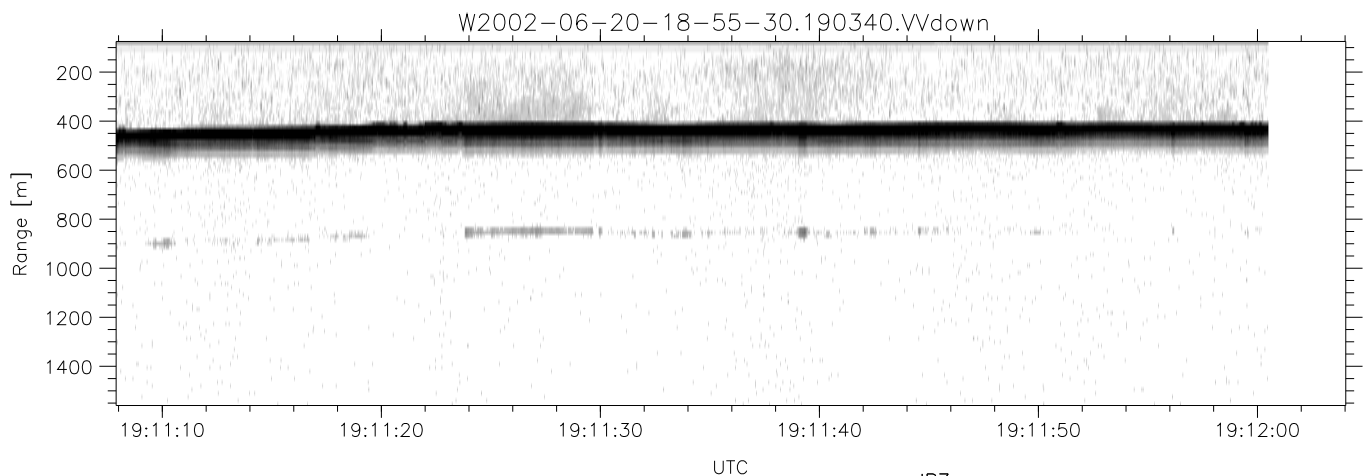
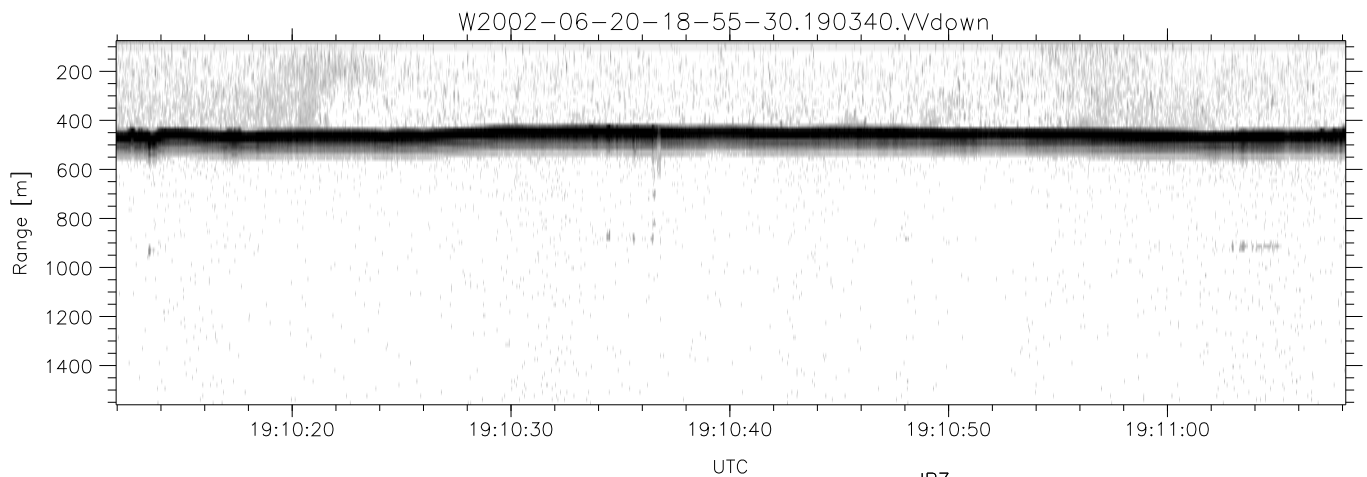
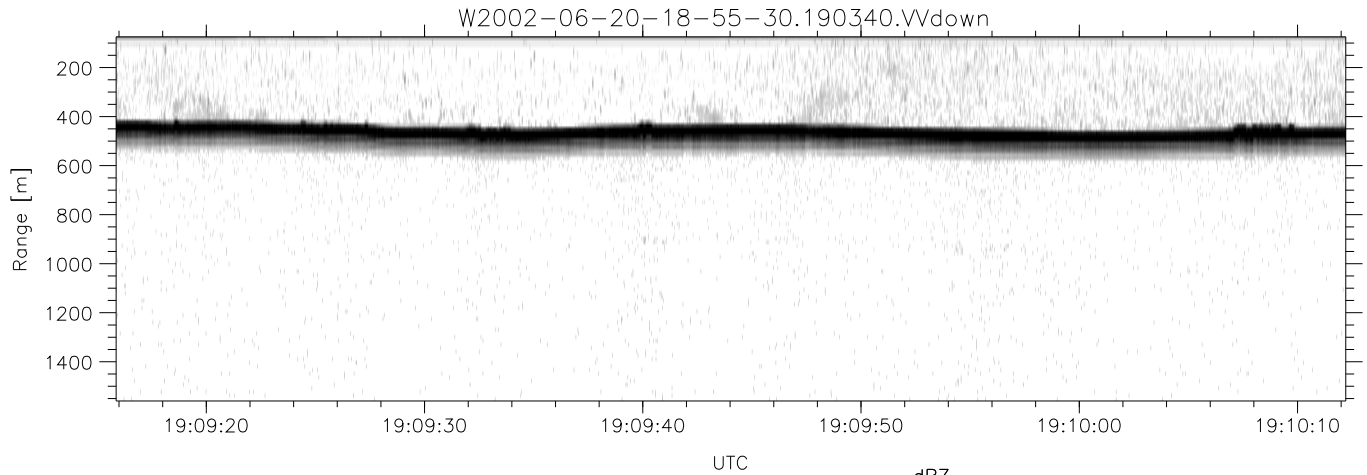
	Min	Max	Mean	Std	Varc%
hhN(dB)	-67.94	-64.39	-66.13	-76.17	9.9
vvN(dB)	-66.84	-63.46	-65.05	-75.06	10.0
hhL(dB)	-10.69	-3.45	-6.03	-9.46	45.5
vvL(dB)	-8.99	-1.87	-4.92	-9.58	34.2
ppN(m/s)	-12.74	12.76	-0.05	4.11	
ppT(m/s)	-100.6	100.81	-0.43	32.50	
hh/vv(dB)	-NaN	42.78	17.30	28.75	1396
vh/hh(dB)	-NaN	-28.58	-34.29	-33.62	116.
hv/vv(dB)	-NaN	-32.63	-54.91	-46.30	726.
hnjmp(dB)	-2.01	2.29	0.17	-8.35	14.1
vnjmp(dB)	-2.21	2.51	0.18	-8.38	13.9



IHOP 2002 (dual-antenna config, modes 1,3,4,7) Data (cal: 49.0,50.0)

W2002-06-20-18-55-30 - PPMAG4
 IRIG:1,UTC: 18:55:19.09 to 19:21:11.31, Dur: 1552s
 TimeLngth: 1552.22s, TimeInt: 29ms (34.1pps)
 TimeCor=-13.0s, DSPDif(mn,min,mx):29,28,363
 PPS(min,max,std): 23,36,2.29
 Prof: 354 to 53272, NumProf(t/r): 52918/17069
 ProcTime/Recs: 19:03:40-19:12:00/17069-34137
 MxACQtime: 33ms; DRate: 190.8KB/s; Flags: 0, 0, 0
 Pulse: 275ns, IFfilt: 5.0MHz; ppPol: HH HV VV
 TxPol: HHVV, PRF: 20 10 20 10 kHz
 Range: Delay 75m, Spacing 15m, Gates 100
 Ave. Pulses: 84, Rng/Prof Aspect@90m/s: 5.7

	Min	Max	Mean	Std	Varc%
hhN(dB)	-67.94	-64.39	-66.13	-76.17	9.9
vvN(dB)	-66.84	-63.46	-65.05	-75.06	10.0
hhL(dB)	-10.69	-3.45	-6.03	-9.46	45.5
vvL(dB)	-8.99	-1.87	-4.92	-9.58	34.2
ppN(m/s)	-12.74	12.76	-0.05	4.11	
ppT(m/s)	-100.6	100.81	-0.43	32.50	
hh/vv(dB)	-NaN	42.78	17.30	28.75	1396
vh/hh(dB)	-NaN	-28.58	-34.29	-33.62	116.
hv/vv(dB)	-NaN	-32.63	-54.91	-46.30	726.
hnjmp(dB)	-2.01	2.29	0.17	-8.35	14.1
vnjmp(dB)	-2.21	2.51	0.18	-8.38	13.9



IHOP 2002 (dual-antenna config, modes 1,3,4,7) Data (cal: 49.0,50.0)

W2002-06-20-18-55-30 - PPMAG4
 IRIG:1,UTC: 18:55:19.09 to 19:21:11.31, Dur: 1552s
 TimeLngth: 1552.22s, TimeInt: 29ms (34.1pps)
 TimeCor=-13.0s, DSPDif(mn,min,mx):29,28,363
 PPS(min,max,std): 23,36,2.29
 Prof: 354 to 53272, NumProf(t/r): 52918/17069
 ProcTime/Recs: 19:03:40-19:12:00/17069-34137
 MxACQtime: 33ms; DRate: 190.8KB/s; Flags: 0, 0, 0
 Pulse: 275ns, IFfilt: 5.0MHz; ppPol: HH HV VV
 TxPol: HHVV, PRF: 20 10 20 10 kHz
 Range: Delay 75m, Spacing 15m, Gates 100
 Ave. Pulses: 84, Rng/Prof Aspect@90m/s: 5.7

	Min	Max	Mean	Std	Varc%
hhN(dB)	-67.94	-64.39	-66.13	-76.17	9.9
vvN(dB)	-66.84	-63.46	-65.05	-75.06	10.0
hhL(dB)	-10.69	-3.45	-6.03	-9.46	45.5
vvL(dB)	-8.99	-1.87	-4.92	-9.58	34.2
ppN(m/s)	-12.74	12.76	-0.05	4.11	
ppT(m/s)	-100.6	100.81	-0.43	32.50	
hh/vv(dB)	-NaN	42.78	17.30	28.75	1396
vh/hh(dB)	-NaN	-28.58	-34.29	-33.62	116.
hv/vv(dB)	-NaN	-32.63	-54.91	-46.30	726.
hnjmp(dB)	-2.01	2.29	0.17	-8.35	14.1
vnjmp(dB)	-2.21	2.51	0.18	-8.38	13.9