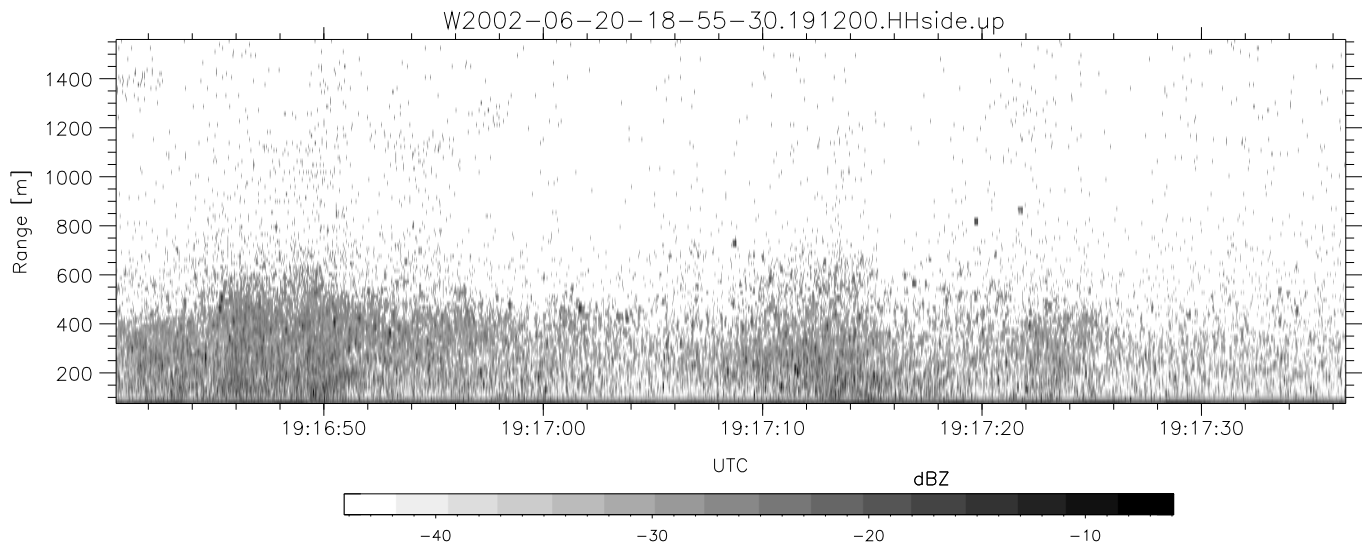
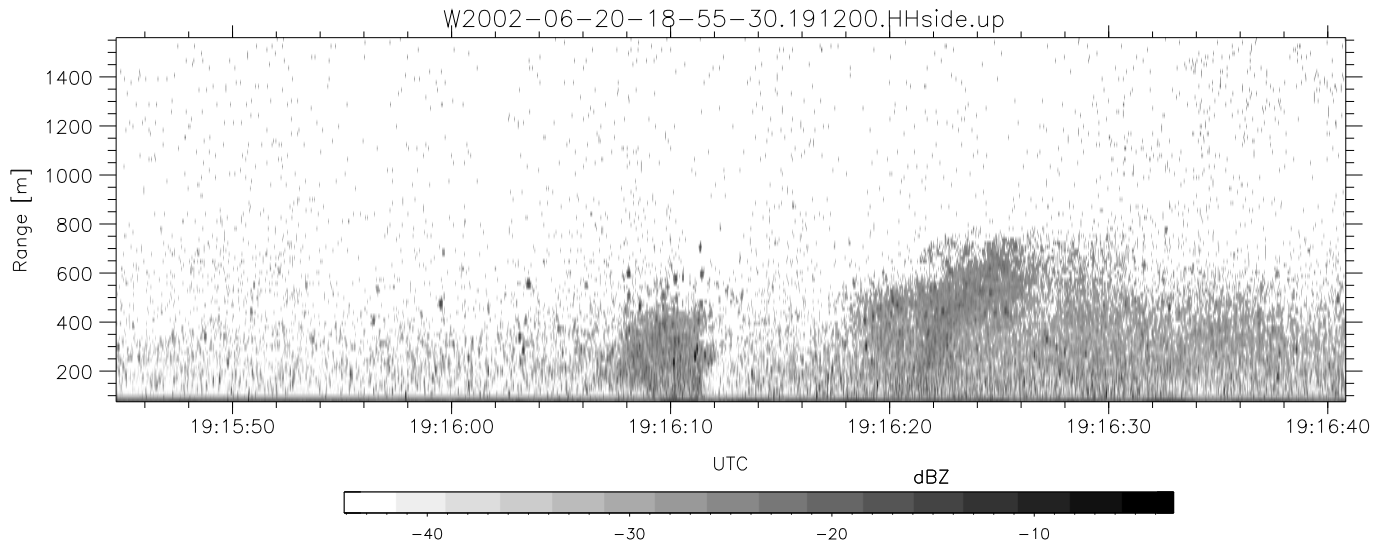
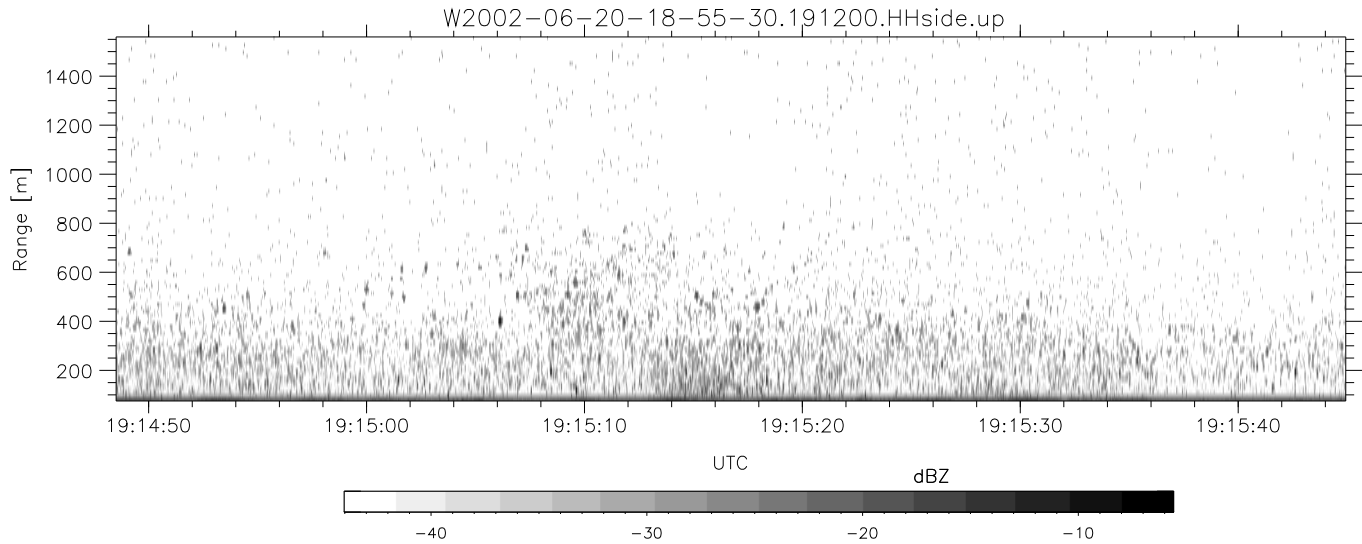


IHOP 2002 (dual-antenna config, modes 1,3,4,7) Data (cal: 49.0,50.0)

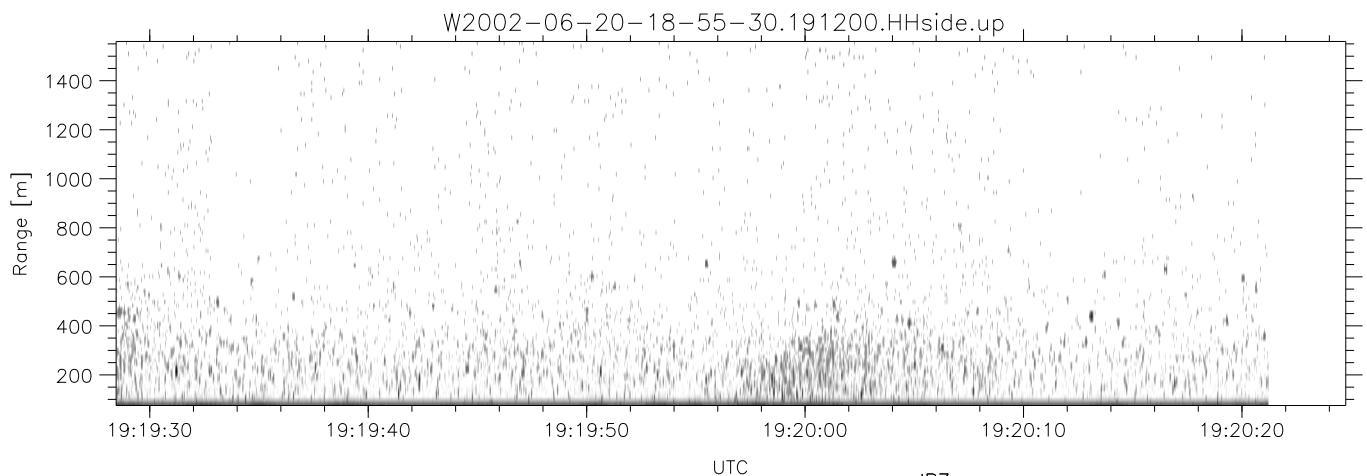
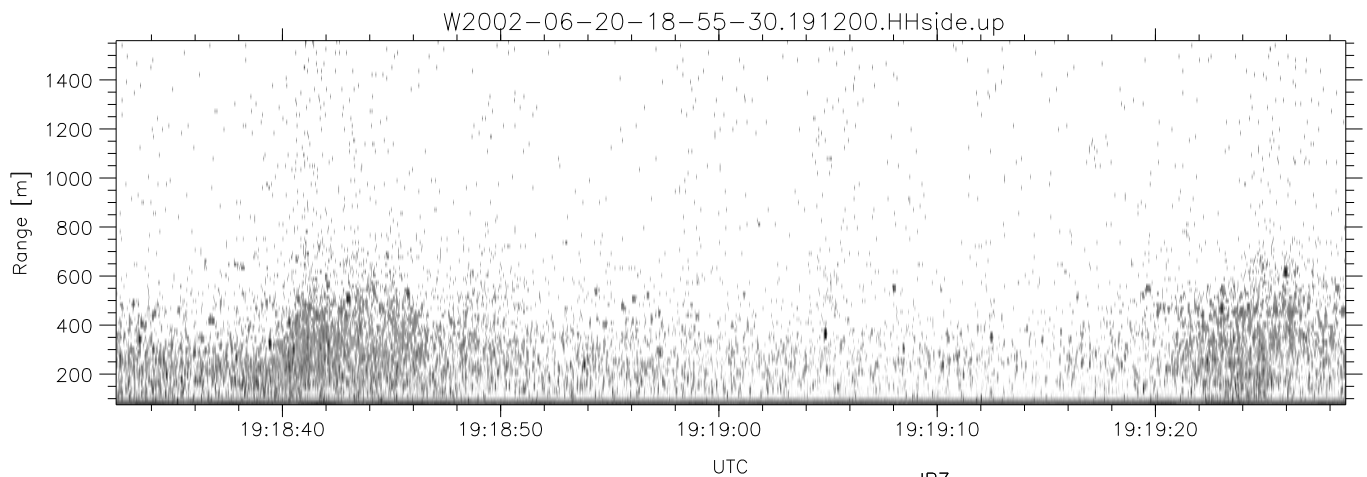
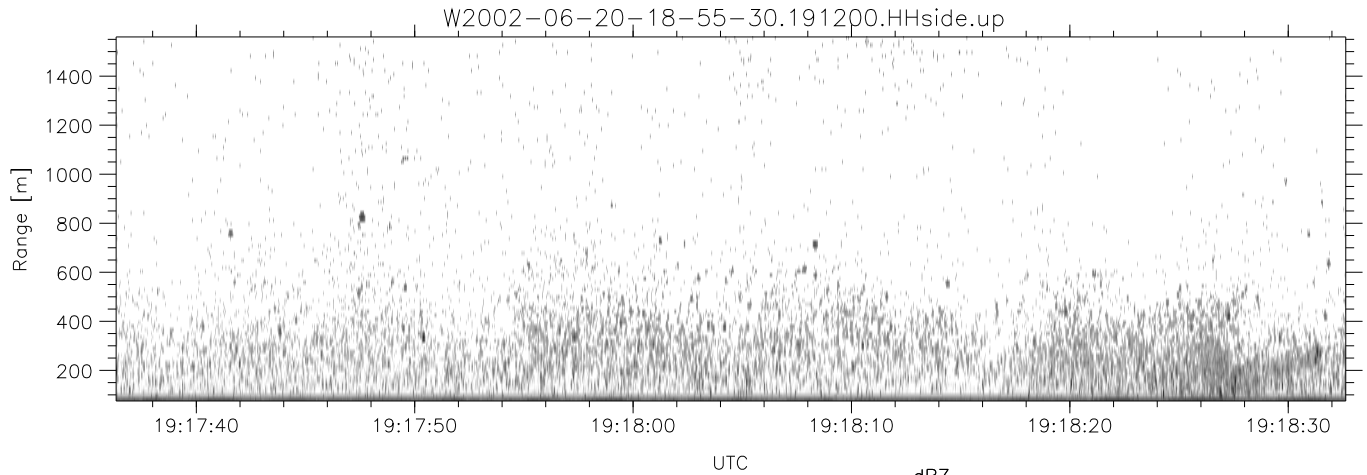
W2002-06-20-18-55-30 - PPMAG4
 IRIG:1,UTC: 18:55:19.09 to 19:21:11.31, Dur: 1552s
 TimeLngth: 1552.22s, TimeInt: 29ms (34.1pps)
 TimeCor=-13.0s, DSPDif(mn,min,mx):29,28,320
 PPS(min,max,std): 24,36,2.37
 Prof: 354 to 53272, NumProf(t/r): 52918/17069
 ProcTime/Recs: 19:12:00-19:20:21/34138-51206
 MxACQtime: 33ms; DRate: 190.8KB/s; Flags: 0, 0, 0
 Pulse: 275ns, IFfilt: 5.0MHz; ppPol: HH HV VV
 TxPol: HHVV, PRF: 20 10 20 10 kHz
 Range: Delay 75m, Spacing 15m, Gates 100
 Ave. Pulses: 84, Rng/Prof Aspect@90m/s: 5.7

	Min	Max	Mean	Std	Varc%
hhN(dB)	-67.72	-64.51	-66.12	-76.18	9.9
vvN(dB)	-66.69	-63.34	-65.06	-75.09	9.9
hhL(dB)	-11.25	-6.72	-9.35	-16.93	17.5
vvL(dB)	-9.97	-3.37	-6.70	-12.48	26.4
ppN(m/s)	-12.84	12.55	-0.08	4.16	
ppT(m/s)	-101.4	99.16	-0.66	32.87	
hh/vv(dB)	-NaN	46.95	16.62	28.26	1459
vh/hh(dB)	-NaN	-29.68	-34.95	-35.15	95.5
hv/vv(dB)	-NaN	-35.35	-54.54	-46.95	573.
hnjmp(dB)	-2.15	1.87	-0.07	-8.64	13.9
vnjmp(dB)	-2.21	2.38	-0.10	-8.66	13.9



IHOP 2002 (dual-antenna config, modes 1,3,4,7) Data (cal: 49.0,50.0)

	Min	Max	Mean	Std	Varc%	
W2002-06-20-18-55-30 - PPMAG4						
IRIG:1,UTC: 18:55:19.09 to 19:21:11.31, Dur: 1552s	hhN (dB)	-67.72	-64.51	-66.12	-76.18	9.9
TimeLngth: 1552.22s, TimeInt: 29ms (34.1pps)	vvN (dB)	-66.69	-63.34	-65.06	-75.09	9.9
TimeCor=-13.0s, DSPDif(mn,min,mx):29,28,320	hhL (dB)	-11.25	-6.72	-9.35	-16.93	17.5
PPS(min,max,std): 24,36,2.37	vvL (dB)	-9.97	-3.37	-6.70	-12.48	26.4
Prof: 354 to 53272, NumProf(t/r): 52918/17069	ppN (m/s)	-12.84	12.55	-0.08	4.16	
ProcTime/Recs: 19:12:00-19:20:21/34138-51206	ppT (m/s)	-101.4	99.16	-0.66	32.87	
MxACQtime: 33ms; DRate: 190.8KB/s; Flags: 0, 0, 0	hh/vv (dB)	-NaN	46.95	16.62	28.26	1459
Pulse: 275ns, IFfilt: 5.0MHz; ppPol: HH HV VV	vh/hh (dB)	-NaN	-29.68	-34.95	-35.15	95.5
TxPol: HHVV, PRF: 20 10 20 10 kHz	hv/vv (dB)	-NaN	-35.35	-54.54	-46.95	573.
Range: Delay 75m, Spacing 15m, Gates 100	hnjmp (dB)	-2.15	1.87	-0.07	-8.64	13.9
Ave. Pulses: 84, Rng/Prof Aspect@90m/s: 5.7	vnjmp (dB)	-2.21	2.38	-0.10	-8.66	13.9



IHOP 2002 (dual-antenna config, modes 1,3,4,7) Data (cal: 49.0,50.0)

W2002-06-20-18-55-30 - PPMAG4	Min	Max	Mean	Std	Varc%	
IRIG:1,UTC: 18:55:19.09 to 19:21:11.31, Dur: 1552s	hhN(dB)	-67.72	-64.51	-66.12	-76.18	9.9
TimeLngth: 1552.22s, TimeInt: 29ms (34.1pps)	vvN(dB)	-66.69	-63.34	-65.06	-75.09	9.9
TimeCor=-13.0s, DSPDif(mn,min,mx):29,28,320	hhL(dB)	-11.25	-6.72	-9.35	-16.93	17.5
PPS(min,max,std): 24,36,2.37	vvL(dB)	-9.97	-3.37	-6.70	-12.48	26.4
Prof: 354 to 53272, NumProf(t/r): 52918/17069	ppN(m/s)	-12.84	12.55	-0.08	4.16	
ProcTime/Recs: 19:12:00-19:20:21/34138-51206	ppT(m/s)	-101.4	99.16	-0.66	32.87	
MxACQtime: 33ms; DRate: 190.8KB/s; Flags: 0, 0, 0	hh/vv(dB)	-NaN	46.95	16.62	28.26	1459
Pulse: 275ns, IFfilt: 5.0MHz; ppPol: HH HV VV	vh/hh(dB)	-NaN	-29.68	-34.95	-35.15	95.5
TxPol: HHVV, PRF: 20 10 20 10 kHz	hv/vv(dB)	-NaN	-35.35	-54.54	-46.95	573.
Range: Delay 75m, Spacing 15m, Gates 100	hn_jmp(dB)	-2.15	1.87	-0.07	-8.64	13.9
Ave. Pulses: 84, Rng/Prof Aspect@90m/s: 5.7	vn_jmp(dB)	-2.21	2.38	-0.10	-8.66	13.9