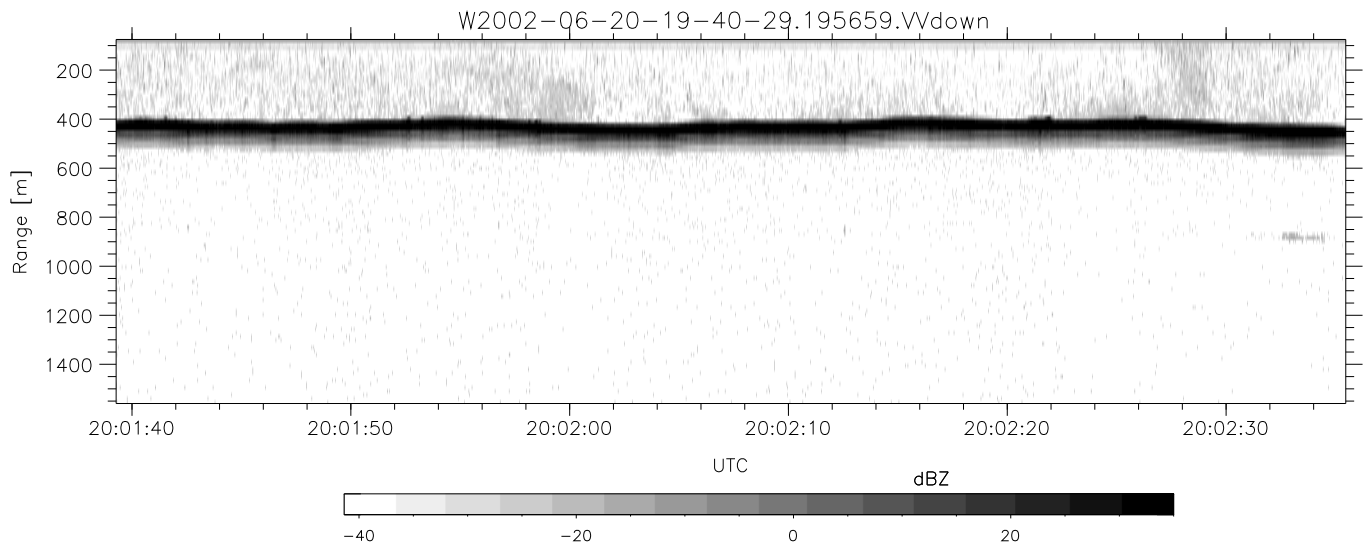
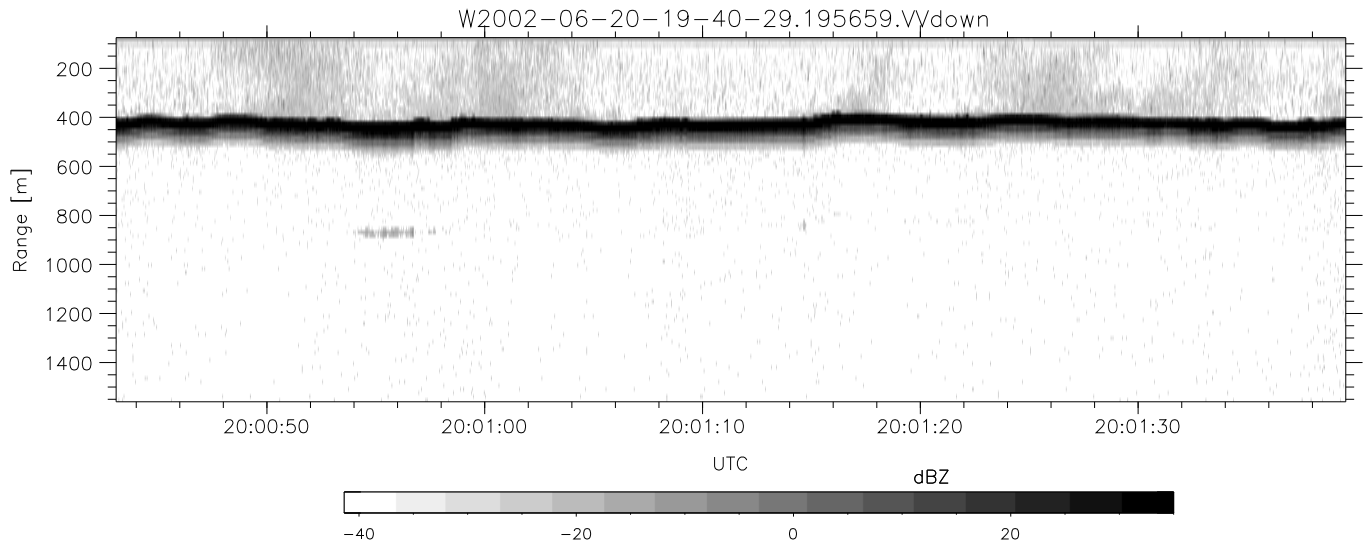
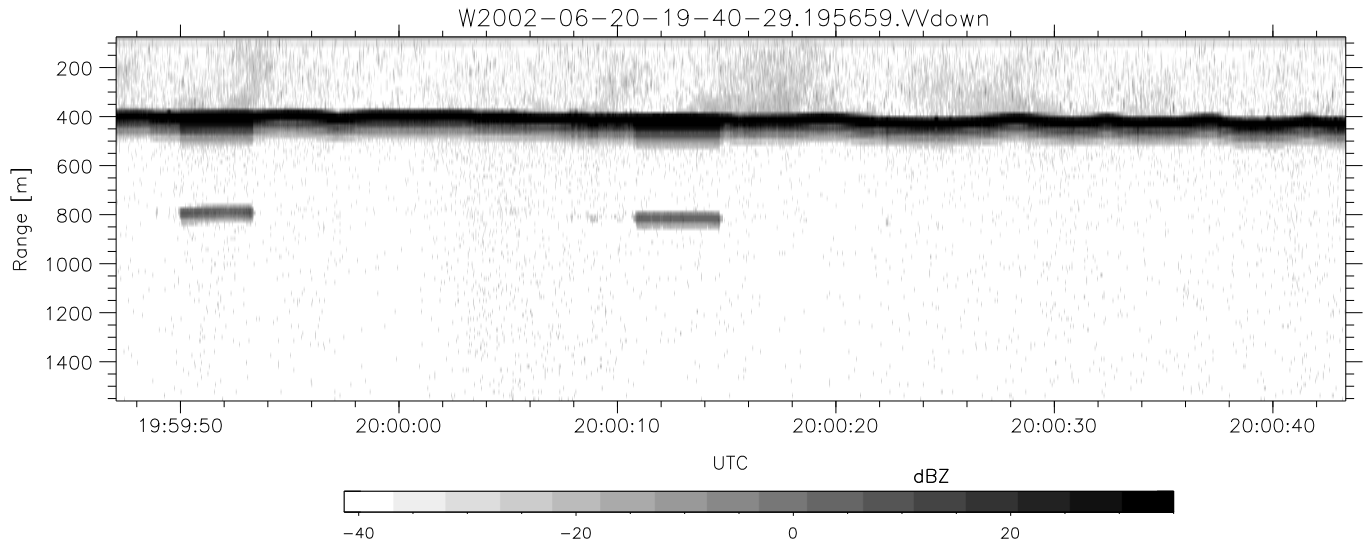


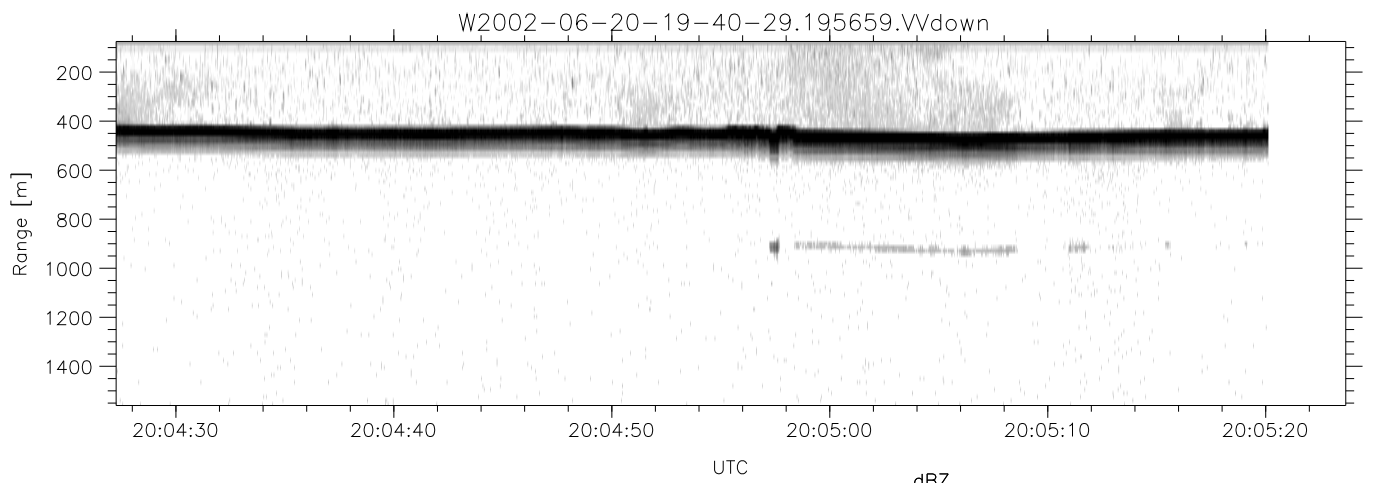
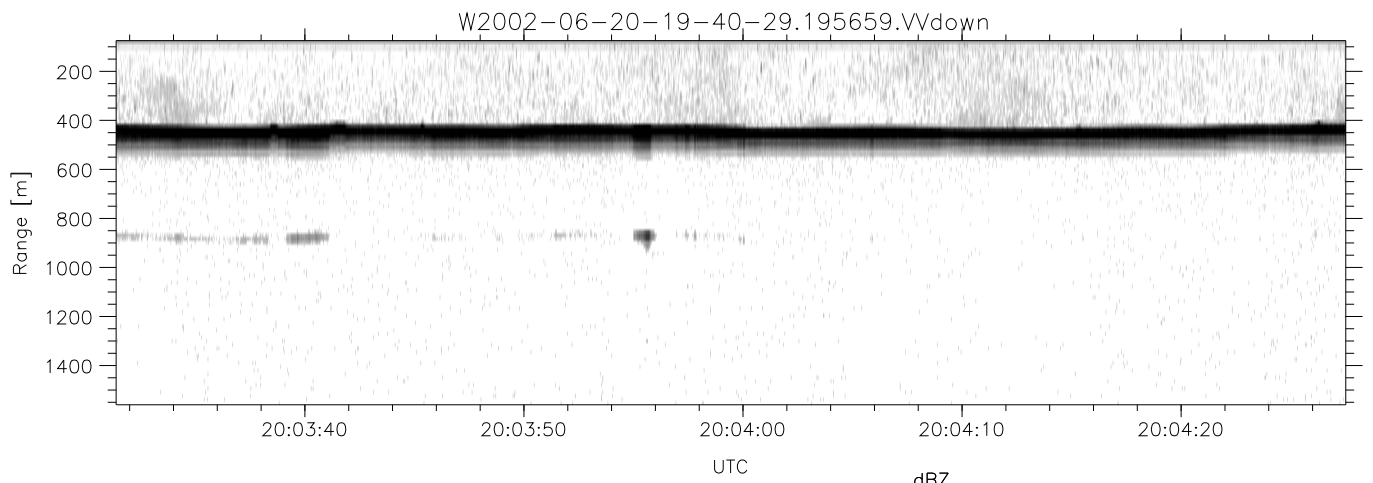
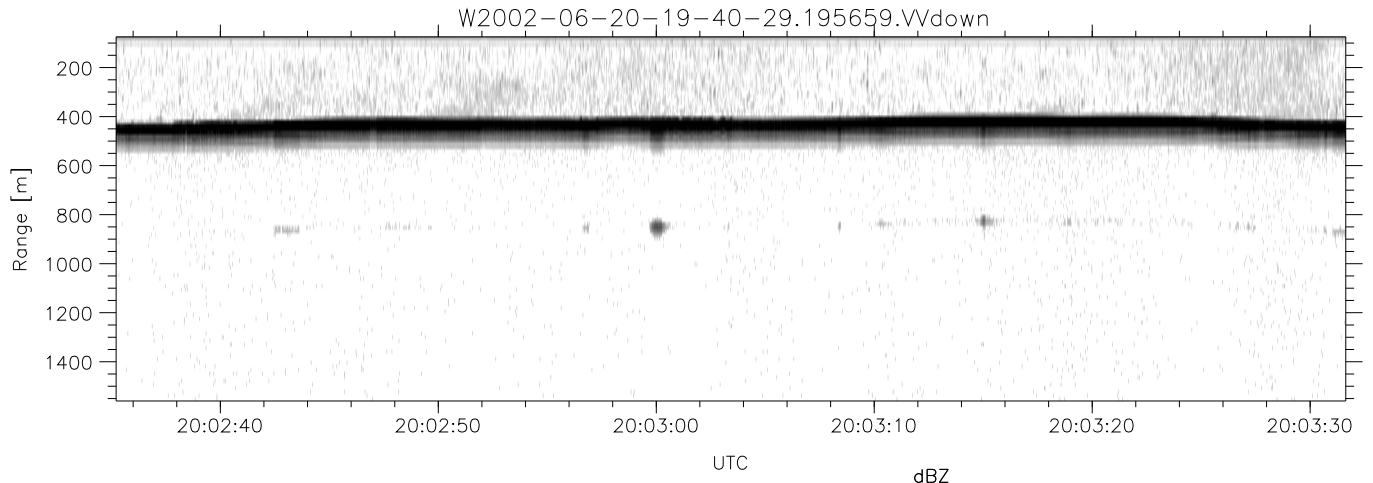
IHOP 2002 (dual-antenna config, modes 1,3,4,7) Data (cal: 49.0,50.0)

W2002-06-20-19-40-29 - PPMAG4	Min	Max	Mean	Std	Varc%	
IRIG:1,UTC: 19:40:17.86 to 20:05:32.18, Dur: 1515s	hhN(dB)	-68.08	-64.60	-66.22	-76.27	9.9
TimeLngth: 1514.32s, TimeInt: 29ms (34.1pps)	vvN(dB)	-66.93	-63.42	-65.15	-75.16	10.0
TimeCor=-13.0s, DSPDif(mn,min,mx):29,28,332	hhL(dB)	-11.71	-5.14	-7.99	-16.34	14.6
PPS(min,max,std): 24,36,2.32	vvL(dB)	-9.61	-2.94	-4.94	-12.44	17.8
Prof: 347 to 51965, NumProf(t/r): 51618/17069	ppN(m/s)	-12.57	12.28	-0.05	4.13	
ProcTime/Recs: 19:56:59-20:05:20/34138-51206	ppT(m/s)	-99.32	97.03	-0.37	32.65	
MxACQtime: 33ms; DRate: 190.8KB/s; Flags: 0, 0, 0	hh/vv(dB)	-NaN	46.69	16.85	31.02	2613
Pulse: 275ns, IFfilt: 5.0MHz; ppPol: HH HV VV	vh/hh(dB)	-NaN	-30.09	-34.22	-35.67	71.6
TxPol: HHVV, PRF: 20 10 20 10 kHz	hv/vv(dB)	-NaN	-33.49	-54.52	-47.05	559.0
Range: Delay 75m, Spacing 15m, Gates 100	hnjmp(dB)	-2.91	2.18	0.15	-8.39	14.0
Ave. Pulses: 84, Rng/Prof Aspect@90m/s: 5.7	vnjmp(dB)	-2.20	3.28	0.16	-8.40	13.9



IHOP 2002 (dual-antenna config, modes 1,3,4,7) Data (cal: 49.0,50.0)

	Min	Max	Mean	Std	Varc%	
W2002-06-20-19-40-29 - PPMAG4						
IRIG:1,UTC: 19:40:17.86 to 20:05:32.18, Dur: 1515s	hhN (dB)	-68.08	-64.60	-66.22	-76.27	9.9
TimeLngth: 1514.32s, TimeInt: 29ms (34.1pps)	vvN (dB)	-66.93	-63.42	-65.15	-75.16	10.0
TimeCor=-13.0s, DSPDif(mn,min,mx):29,28,332	hhL (dB)	-11.71	-5.14	-7.99	-16.34	14.6
PPS(min,max,std): 24,36,2.32	vvL (dB)	-9.61	-2.94	-4.94	-12.44	17.8
Prof: 347 to 51965, NumProf(t/r): 51618/17069	ppN (m/s)	-12.57	12.28	-0.05	4.13	
ProcTime/Recs: 19:56:59-20:05:20/34138-51206	ppT (m/s)	-99.32	97.03	-0.37	32.65	
MxAcQtime: 33ms; DRate: 190.8KB/s; Flags: 0, 0, 0	hh/vv (dB)	-NaN	46.69	16.85	31.02	2613
Pulse: 275ns, IFilt: 5.0MHz; ppPol: HH HV VV	vh/hh (dB)	-NaN	-30.09	-34.22	-35.67	71.6
TxPol: HHVV, PRF: 20 10 20 10 kHz	hv/vv (dB)	-NaN	-33.49	-54.52	-47.05	559.0
Range: Delay 75m, Spacing 15m, Gates 100	hn/jmp (dB)	-2.91	2.18	0.15	-8.39	14.0
Ave. Pulses: 84, Rng/Prof Aspect@90m/s: 5.7	vn/jmp (dB)	-2.20	3.28	0.16	-8.40	13.9



IHOP 2002 (dual-antenna config, modes 1,3,4,7) Data (cal: 49.0,50.0)

W2002-06-20-19-40-29 - PPMAG4
 IRIG:1,UTC: 19:40:17.86 to 20:05:32.18, Dur: 1515s
 TimeLngth: 1514.32s, TimeInt: 29ms (34.1pps)
 TimeCor=-13.0s, DSPDif(mn,min,mx):29,28,332
 PPS(min,max,std): 24,36,2.32
 Prof: 347 to 51965, NumProf(t/r): 51618/17069
 ProcTime/Recs: 19:56:59-20:05:20/34138-51206
 MxACQtime: 33ms; DRate: 190.8KB/s; Flags: 0, 0, 0
 Pulse: 275ns, IFfilt: 5.0MHz; ppPol: HH HV VV
 TxPol: HHVV, PRF: 20 10 20 10 kHz
 Range: Delay 75m, Spacing 15m, Gates 100
 Ave. Pulses: 84, Rng/Prof Aspect@90m/s: 5.7

	Min	Max	Mean	Std	Varc%
hhN(dB)	-68.08	-64.60	-66.22	-76.27	9.9
vvN(dB)	-66.93	-63.42	-65.15	-75.16	10.0
hhL(dB)	-11.71	-5.14	-7.99	-16.34	14.6
vvL(dB)	-9.61	-2.94	-4.94	-12.44	17.8
ppN(m/s)	-12.57	12.28	-0.05	4.13	
ppT(m/s)	-99.32	97.03	-0.37	32.65	
hh/vv(dB)	-NaN	46.69	16.85	31.02	2613
vh/hh(dB)	-NaN	-30.09	-34.22	-35.67	71.6
hv/vv(dB)	-NaN	-33.49	-54.52	-47.05	559.
hnjmp(dB)	-2.91	2.18	0.15	-8.39	14.0
vnjmp(dB)	-2.20	3.28	0.16	-8.40	13.9