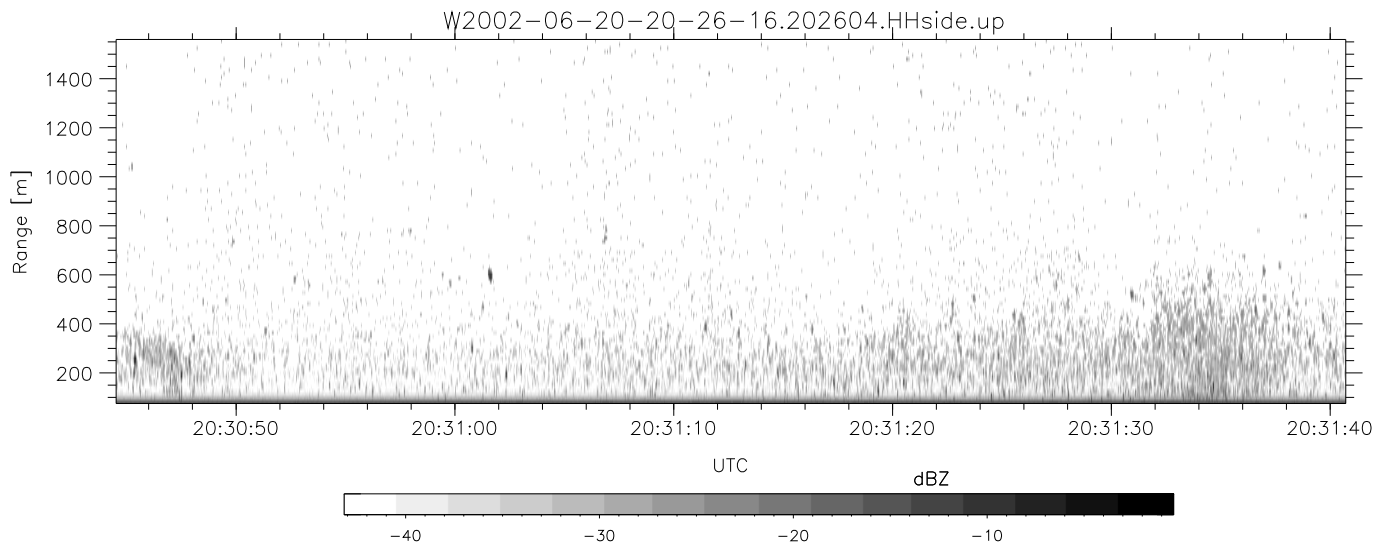
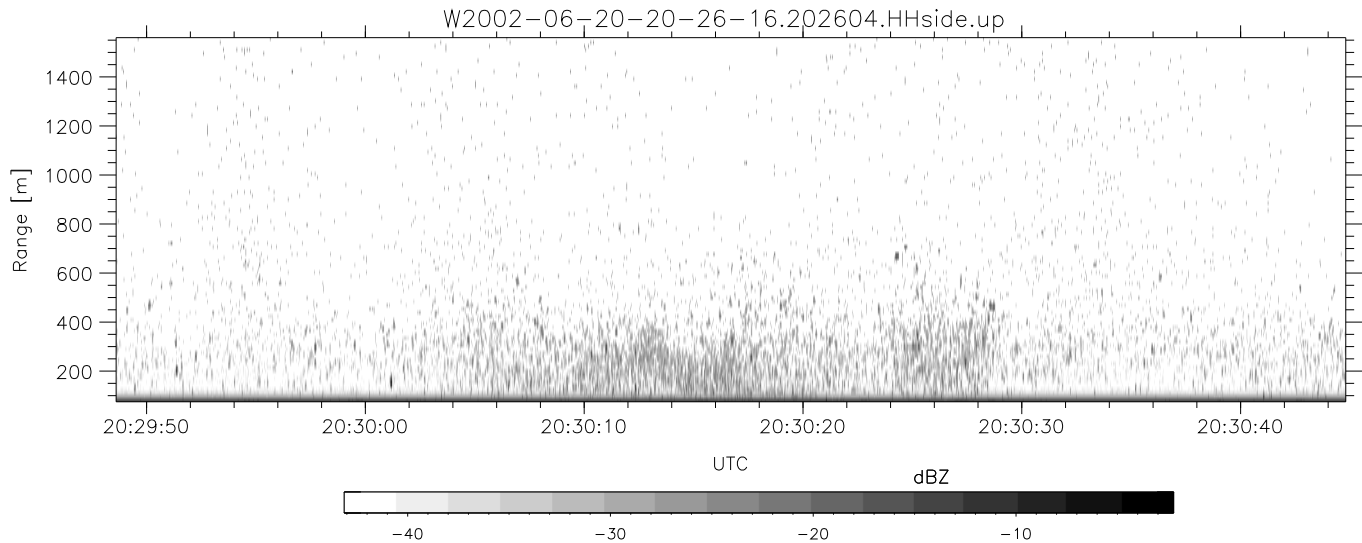
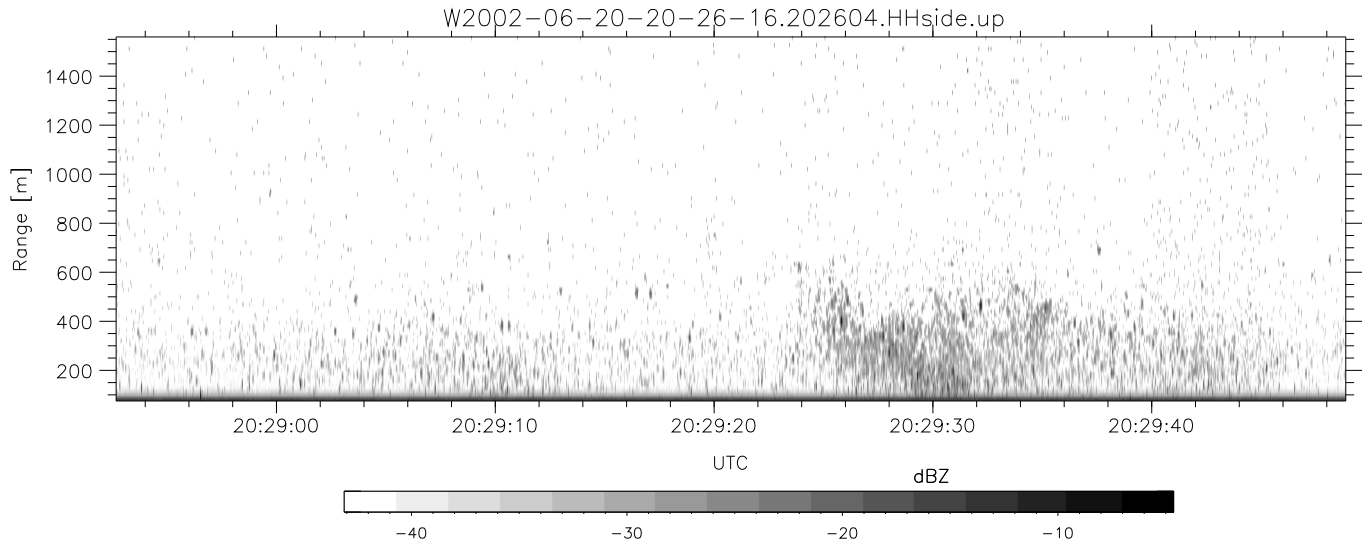


IHOP 2002 (dual-antenna config, modes 1,3,4,7) Data (cal: 49.0,50.0)

W2002-06-20-20-26-16 - PPMAG4
 IRIG:1,UTC: 20:26:04.63 to 20:36:21.15, Dur: 617s
 TimeLngth: 616.52s, TimeInt: 29ms (34.1pps)
 TimeCor=-13.0s, DSPDif(mn,min,mx):29,28,364
 PPS(min,max,std): 8,36,2.58
 Prof: 621 to 21632, NumProf(t/r): 21011/17069
 ProcTime/Recs: 20:26:04-20:34:25/0-17068
 MxACQtime: 33ms; DRate: 190.8KB/s; Flags: 0, 0, 0
 Pulse: 275ns, IFfilt: 5.0MHz; ppPol: HH HV VV
 TxPol: HHVV, PRF: 20 10 20 10 kHz
 Range: Delay 75m, Spacing 15m, Gates 100
 Ave. Pulses: 84, Rng/Prof Aspect@90m/s: 5.7

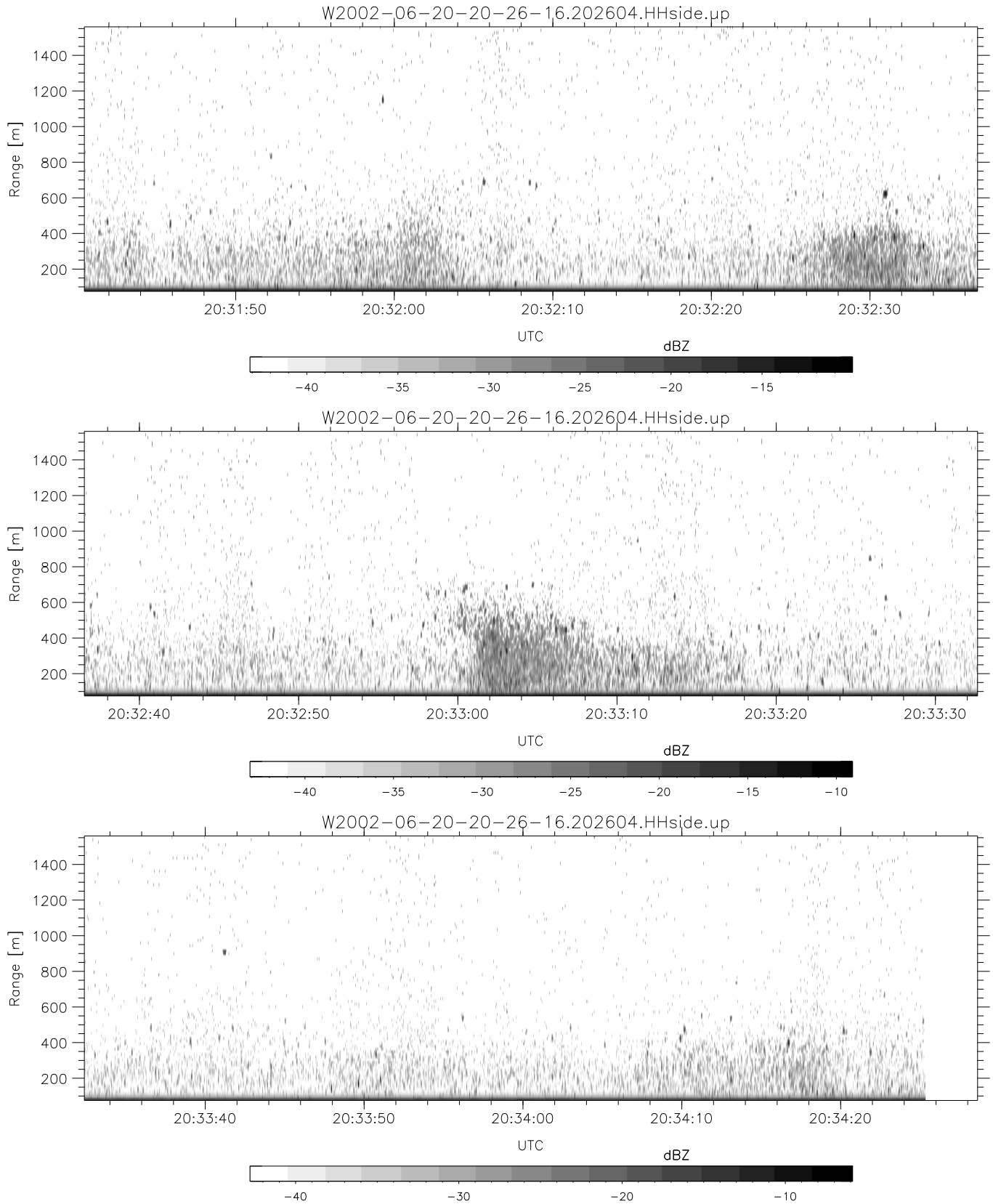
| | Min | Max | Mean | Std | Varc% |
|-----------|--------|--------|--------|--------|-------|
| hhN(dB) | -68.11 | -64.62 | -66.23 | -76.19 | 10.1 |
| vvN(dB) | -67.01 | -63.75 | -65.21 | -75.21 | 10.0 |
| hhL(dB) | -7.99 | -3.76 | -5.05 | -14.60 | 11.1 |
| vvL(dB) | -8.14 | -1.94 | -4.15 | -11.88 | 16.9 |
| ppN(m/s) | -12.42 | 12.87 | -0.13 | 4.11 | |
| ppT(m/s) | -98.14 | 101.64 | -1.06 | 32.44 | |
| hh/vv(dB) | -NaN | 53.08 | -NaN | 42.25 | -129 |
| vh/hh(dB) | -NaN | -29.38 | -34.32 | -34.12 | 104. |
| hv/vv(dB) | -NaN | -32.46 | -55.84 | -45.91 | 983. |
| hnjmp(dB) | -1.94 | 2.23 | 0.16 | -8.34 | 14.1 |
| vnjmp(dB) | -1.95 | 2.33 | 0.17 | -8.36 | 14.0 |



IHOP 2002 (dual-antenna config, modes 1,3,4,7) Data (cal: 49.0,50.0)

W2002-06-20-20-26-16 - PPMAG4
 IRIG:1,UTC: 20:26:04.63 to 20:36:21.15, Dur: 617s
 TimeLngth: 616.52s, TimeInt: 29ms (34.1pps)
 TimeCor=-13.0s, DSPDif(mn,min,mx):29,28,364
 PPS(min,max,std): 8,36,2.58
 Prof: 621 to 21632, NumProf(t/r): 21011/17069
 ProcTime/Recs: 20:26:04-20:34:25/0-17068
 MxACQtime: 33ms; DRate: 190.8KB/s; Flags: 0, 0, 0
 Pulse: 275ns, IFfilt: 5.0MHz; ppPol: HH HV VV
 TxPol: HHVV, PRF: 20 10 20 10 kHz
 Range: Delay 75m, Spacing 15m, Gates 100
 Ave. Pulses: 84, Rng/Prof Aspect@90m/s: 5.7

| | Min | Max | Mean | Std | Varc% |
|-----------|--------|--------|--------|--------|-------|
| hhN(dB) | -68.11 | -64.62 | -66.23 | -76.19 | 10.1 |
| vvN(dB) | -67.01 | -63.75 | -65.21 | -75.21 | 10.0 |
| hhL(dB) | -7.99 | -3.76 | -5.05 | -14.60 | 11.1 |
| vvL(dB) | -8.14 | -1.94 | -4.15 | -11.88 | 16.9 |
| ppN(m/s) | -12.42 | 12.87 | -0.13 | 4.11 | |
| ppT(m/s) | -98.14 | 101.64 | -1.06 | 32.44 | |
| hh/vv(dB) | -NaN | 53.08 | -NaN | 42.25 | -129 |
| vh/hh(dB) | -NaN | -29.38 | -34.32 | -34.12 | 104. |
| hv/vv(dB) | -NaN | -32.46 | -55.84 | -45.91 | 983. |
| hh/vv(dB) | -1.94 | 2.23 | 0.16 | -8.34 | 14.1 |
| vv/vv(dB) | -1.95 | 2.33 | 0.17 | -8.36 | 14.0 |



IHOP 2002 (dual-antenna config, modes 1,3,4,7) Data (cal: 49.0,50.0)

| | | | | | | |
|---|-------------|--------|--------|--------|--------|------|
| W2002-06-20-20-26-16 - PPMAG4 | Min | Max | Mean | Std | Varc% | |
| IRIG:1,UTC: 20:26:04.63 to 20:36:21.15, Dur: 617s | hhN (dB) | -68.11 | -64.62 | -66.23 | -76.19 | 10.1 |
| TimeLngth: 616.52s, TimeInt: 29ms (34.1pps) | vvN (dB) | -67.01 | -63.75 | -65.21 | -75.21 | 10.0 |
| TimeCor=-13.0s, DSPDif(mn,min,mx):29,28,364 | hhL (dB) | -7.99 | -3.76 | -5.05 | -14.60 | 11.1 |
| PPS(min,max,std): 8,36,2.58 | vvL (dB) | -8.14 | -1.94 | -4.15 | -11.88 | 16.9 |
| Prof: 621 to 21632, NumProf(t/r): 21011/17069 | ppN (m/s) | -12.42 | 12.87 | -0.13 | 4.11 | |
| ProcTime/Recs: 20:26:04-20:34:25/0-17068 | ppT (m/s) | -98.14 | 101.64 | -1.06 | 32.44 | |
| MxACQtime: 33ms; DRate: 190.8KB/s; Flags: 0, 0, 0 | hh/vv (dB) | -NaN | 53.08 | -NaN | 42.25 | -129 |
| Pulse: 275ns, IFilt: 5.0MHz; ppPol: HH HV VV | vh/hh (dB) | -NaN | -29.38 | -34.32 | -34.12 | 104. |
| TxPol: HHVV, PRF: 20 10 20 10 kHz | hv/vv (dB) | -NaN | -32.46 | -55.84 | -45.91 | 983. |
| Range: Delay 75m, Spacing 15m, Gates 100 | hn_jmp (dB) | -1.94 | 2.23 | 0.16 | -8.34 | 14.1 |
| Ave. Pulses: 84, Rng/Prof Aspect@90m/s: 5.7 | vn_jmp (dB) | -1.95 | 2.33 | 0.17 | -8.36 | 14.0 |