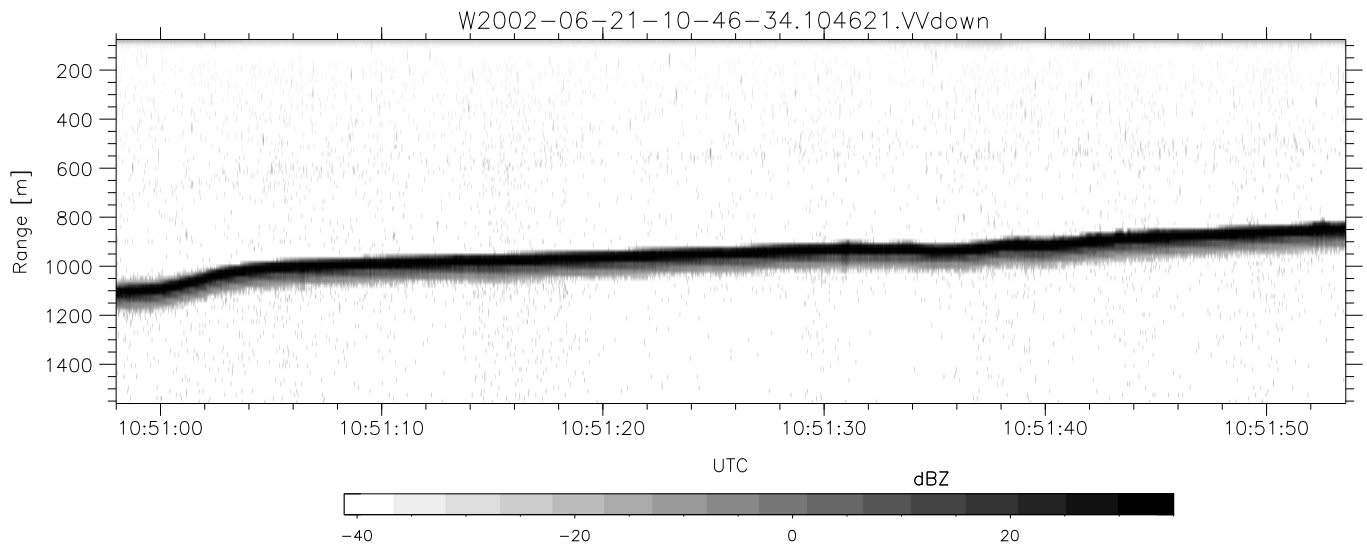
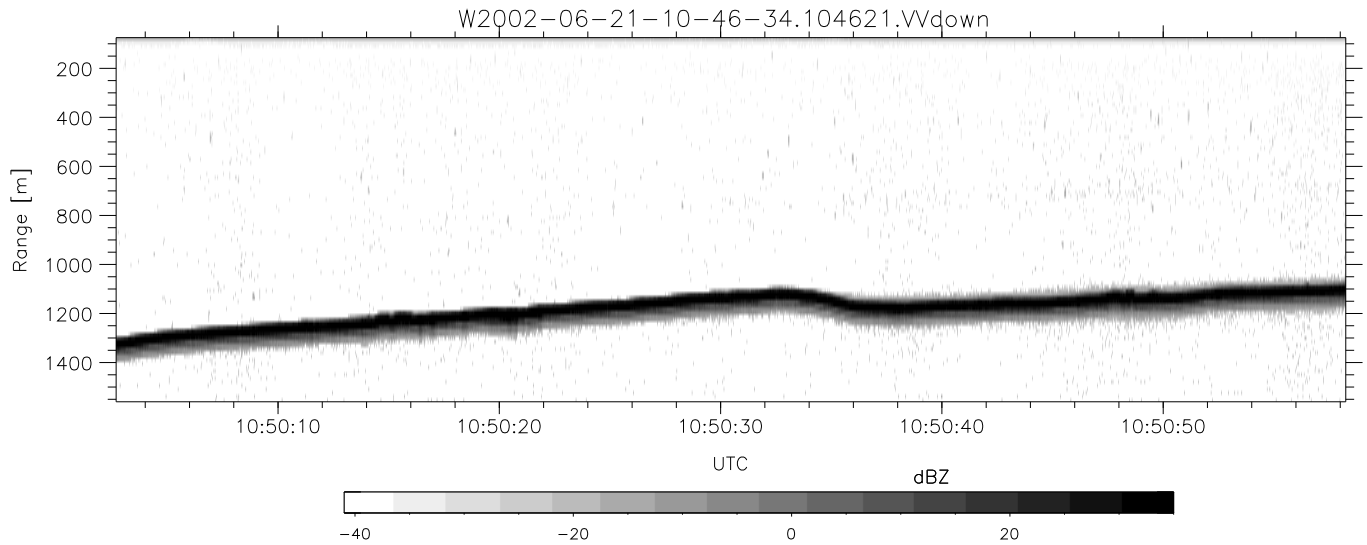
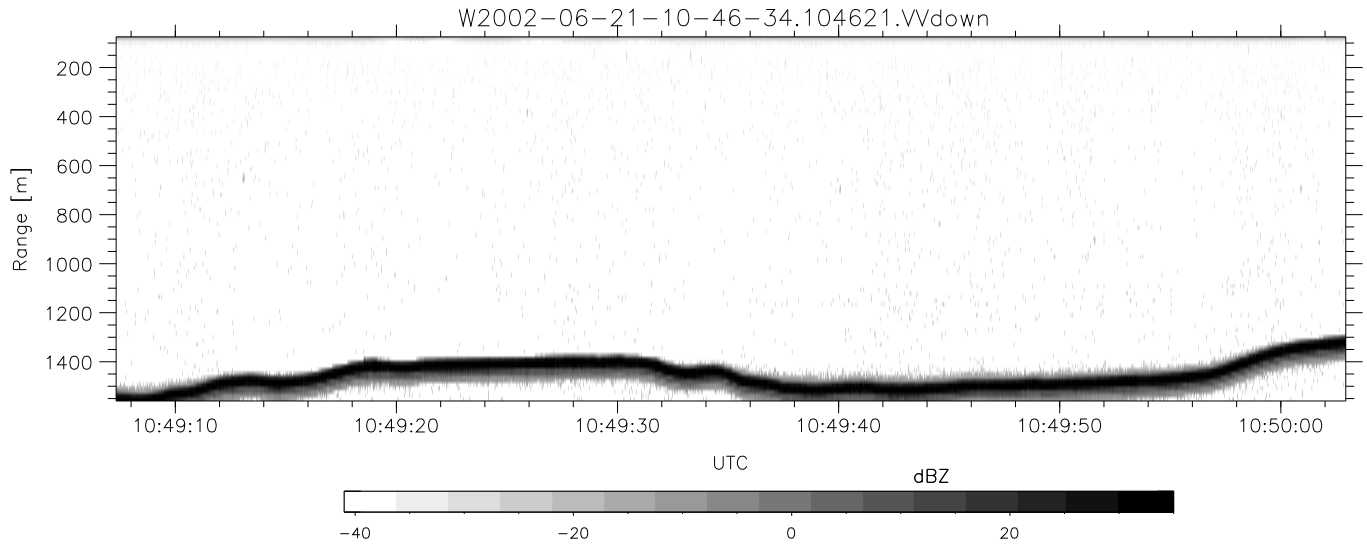


IHOP 2002 (dual-antenna config, modes 1,3,4,7) Data (cal: 49.0,50.0)

W2002-06-21-10-46-34 - PPMAG4  
 IRIG:1,UTC: 10:46:21.22 to 13:48:33.67, Dur: 10932s  
 TimeLngth: 10932.44s, TimeInt: 29ms (34.3pps)  
 TimeCor=-13.0s, DSPDif(mn,min,mx):28,28,310  
 PPS(min,max,std): 25,36,2.17  
 Prof: 398 to 375046, NumProf(t/r): 374648/17069  
 ProcTime/Recs: 10:46:21-10:54:33/0-17068  
 MxACQtime: 33ms; DRate: 191.8KB/s; Flags: 1, 0, 0  
 Pulse: 275ns, IFilt: 5.0MHz; ppPol: HH HV VV  
 TxPol: HHVV, PRF: 20 10 20 10 kHz  
 Range: Delay 75m, Spacing 15m, Gates 100  
 Ave. Pulses: 84, Rng/Prof Aspect@90m/s: 5.7

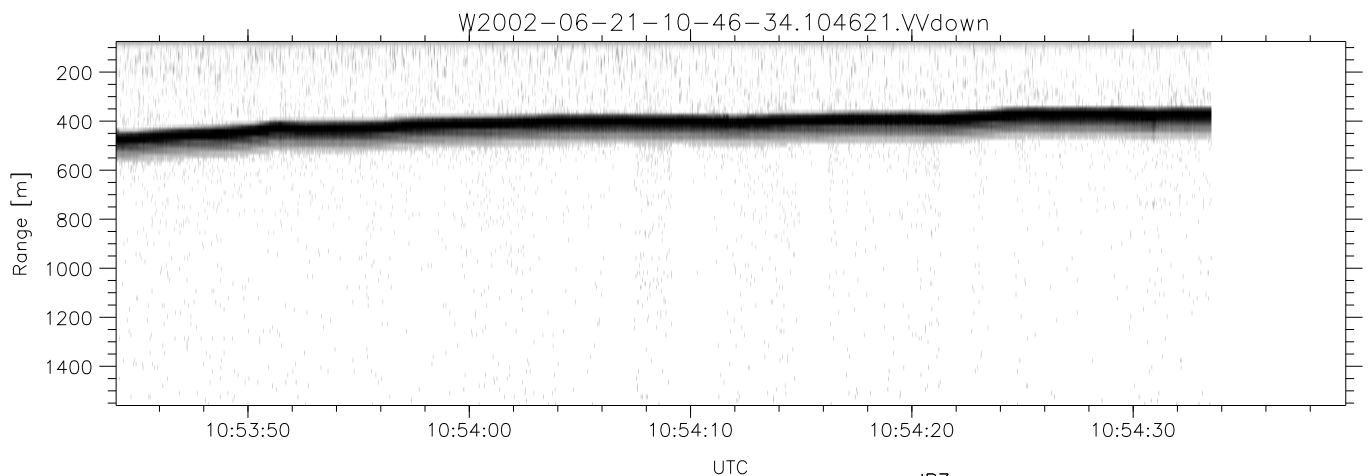
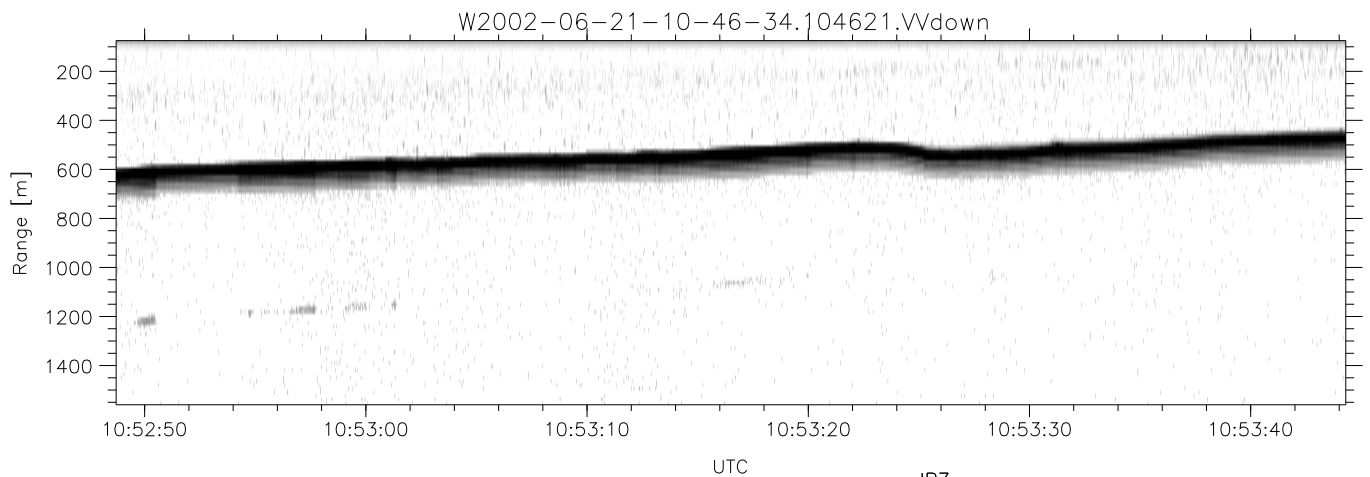
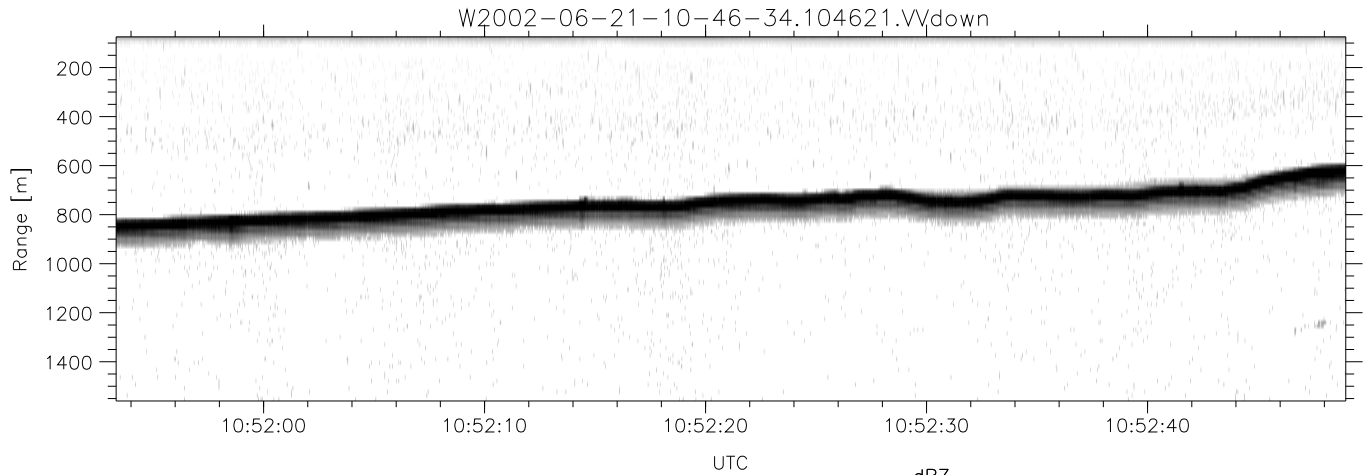
|           | Min    | Max    | Mean   | Std    | Varc% |
|-----------|--------|--------|--------|--------|-------|
| hhN(dB)   | -66.78 | -63.36 | -65.11 | -75.01 | 10.2  |
| vvN(dB)   | -65.97 | -62.28 | -64.08 | -73.99 | 10.2  |
| hhL(dB)   | -14.60 | -0.72  | -3.81  | -6.50  | 53.9  |
| vvL(dB)   | -14.13 | -1.45  | -6.13  | -7.86  | 67.1  |
| ppN(m/s)  | -12.31 | 12.42  | 0.15   | 4.21   |       |
| ppT(m/s)  | -97.27 | 98.14  | 1.17   | 33.26  |       |
| hh/vv(dB) | -NaN   | 36.24  | 18.82  | 28.93  | 1027  |
| vh/hh(dB) | -99.00 | -99.00 | -99.00 | -99.00 | -99.  |
| hv/vv(dB) | -NaN   | -32.19 | -51.98 | -44.88 | 513.  |
| hnjmp(dB) | -2.16  | 2.15   | -0.07  | -8.66  | 13.8  |
| vnjmp(dB) | -2.37  | 2.05   | -0.07  | -8.74  | 13.6  |



IHOP 2002 (dual-antenna config, modes 1,3,4,7) Data (cal: 49.0,50.0)

W2002-06-21-10-46-34 - PPMAG4  
 IRIG:1,UTC: 10:46:21.22 to 13:48:33.67, Dur: 10932s  
 TimeLngth: 10932.44s, TimeInt: 29ms (34.3pps)  
 TimeCor=-13.0s, DSPDif(mn,min,mx):28,28,310  
 PPS(min,max,std): 25,36,2.17  
 Prof: 398 to 375046, NumProf(t/r): 374648/17069  
 ProcTime/Recs: 10:46:21-10:54:33/0-17068  
 MxACQtime: 33ms; DRate: 191.8KB/s; Flags: 1, 0, 0  
 Pulse: 275ns, IFfilt: 5.0MHz; ppPol: HH HV VV  
 TxPol: HHVV, PRF: 20 10 20 10 kHz  
 Range: Delay 75m, Spacing 15m, Gates 100  
 Ave. Pulses: 84, Rng/Prof Aspect@90m/s: 5.7

|           | Min    | Max    | Mean   | Std    | Varc% |
|-----------|--------|--------|--------|--------|-------|
| hhN(dB)   | -66.78 | -63.36 | -65.11 | -75.01 | 10.2  |
| vvN(dB)   | -65.97 | -62.28 | -64.08 | -73.99 | 10.2  |
| hhL(dB)   | -14.60 | -0.72  | -3.81  | -6.50  | 53.9  |
| vvL(dB)   | -14.13 | -1.45  | -6.13  | -7.86  | 67.1  |
| ppN(m/s)  | -12.31 | 12.42  | 0.15   | 4.21   |       |
| ppT(m/s)  | -97.27 | 98.14  | 1.17   | 33.26  |       |
| hh/vv(dB) | -NaN   | 36.24  | 18.82  | 28.93  | 1027  |
| vh/hh(dB) | -99.00 | -99.00 | -99.00 | -99.00 | -99.  |
| hv/vv(dB) | -NaN   | -32.19 | -51.98 | -44.88 | 513.  |
| hnjmp(dB) | -2.16  | 2.15   | -0.07  | -8.66  | 13.8  |
| vnjmp(dB) | -2.37  | 2.05   | -0.07  | -8.74  | 13.6  |



IHOP 2002 (dual-antenna config, modes 1,3,4,7) Data (cal: 49.0,50.0)

W2002-06-21-10-46-34 - PPMAG4  
 IRIG:1,UTC: 10:46:21.22 to 13:48:33.67, Dur: 10932s  
 TimeLngth: 10932.44s, TimeInt: 29ms (34.3pps)  
 TimeCor=-13.0s, DSPDif(mn,min,mx):28,28,310  
 PPS(min,max,std): 25,36,2.17  
 Prof: 398 to 375046, NumProf(t/r): 374648/17069  
 ProcTime/Recs: 10:46:21-10:54:33/0-17068  
 MxACQtime: 33ms; DRate: 191.8KB/s; Flags: 1, 0, 0  
 Pulse: 275ns, IFilt: 5.0MHz; ppPol: HH HV VV  
 TxPol: HHVV, PRF: 20 10 20 10 kHz  
 Range: Delay 75m, Spacing 15m, Gates 100  
 Ave. Pulses: 84, Rng/Prof Aspect@90m/s: 5.7

|           | Min    | Max    | Mean   | Std    | Varc% |
|-----------|--------|--------|--------|--------|-------|
| hhN(dB)   | -66.78 | -63.36 | -65.11 | -75.01 | 10.2  |
| vvN(dB)   | -65.97 | -62.28 | -64.08 | -73.99 | 10.2  |
| hhL(dB)   | -14.60 | -0.72  | -3.81  | -6.50  | 53.9  |
| vvL(dB)   | -14.13 | -1.45  | -6.13  | -7.86  | 67.1  |
| ppN(m/s)  | -12.31 | 12.42  | 0.15   | 4.21   |       |
| ppT(m/s)  | -97.27 | 98.14  | 1.17   | 33.26  |       |
| hh/vv(dB) | -NaN   | 36.24  | 18.82  | 28.93  | 1027  |
| vh/hh(dB) | -99.00 | -99.00 | -99.00 | -99.00 | -99.  |
| hv/vv(dB) | -NaN   | -32.19 | -51.98 | -44.88 | 513.  |
| hnjmp(dB) | -2.16  | 2.15   | -0.07  | -8.66  | 13.8  |
| vnjmp(dB) | -2.37  | 2.05   | -0.07  | -8.74  | 13.6  |