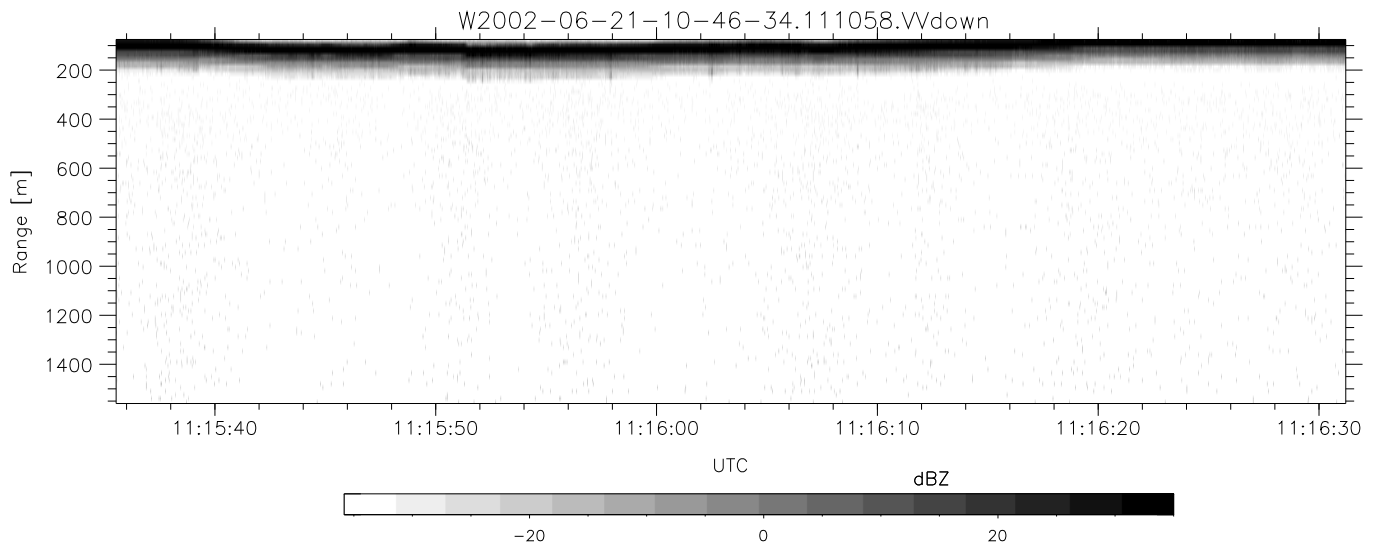
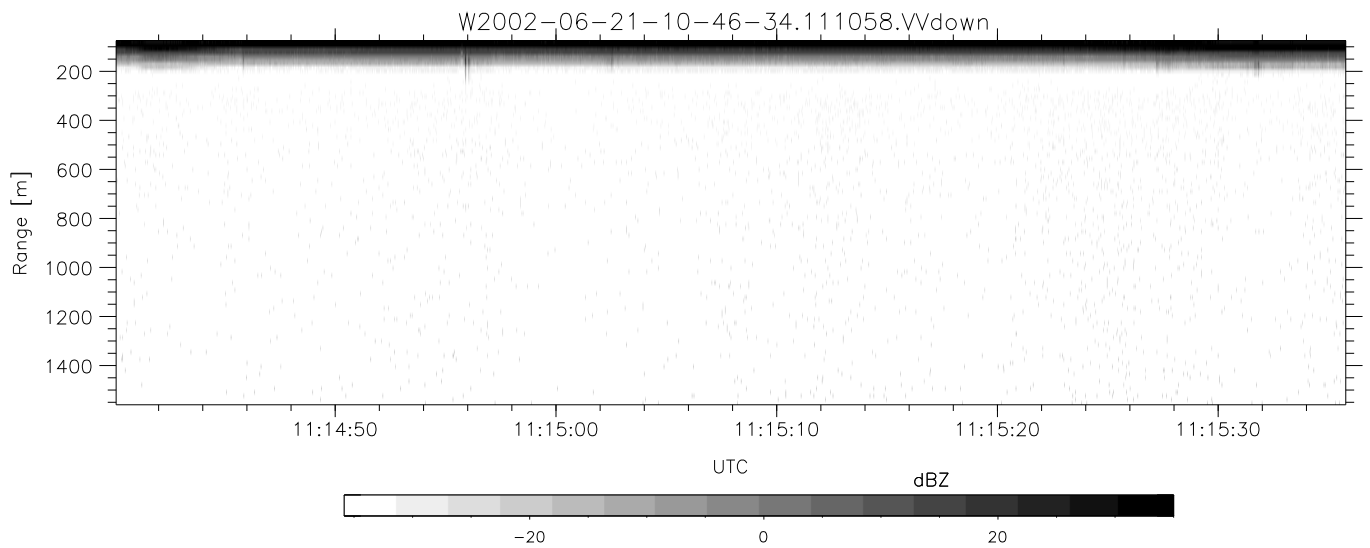
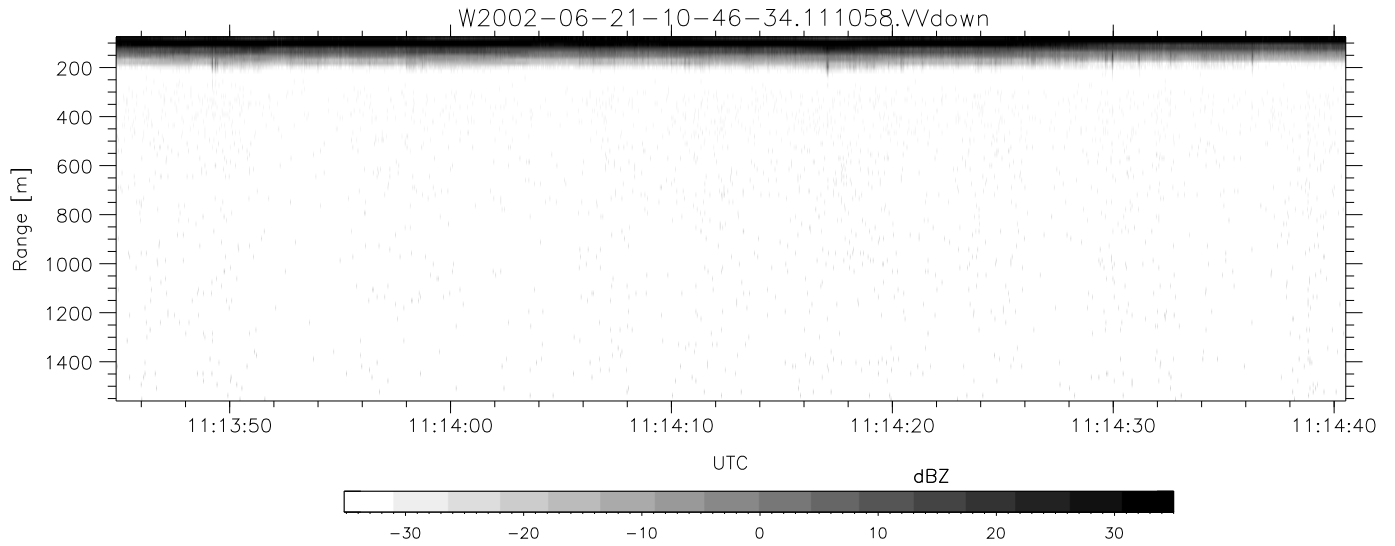


IHOP 2002 (dual-antenna config, modes 1,3,4,7) Data (cal: 49.0,50.0)

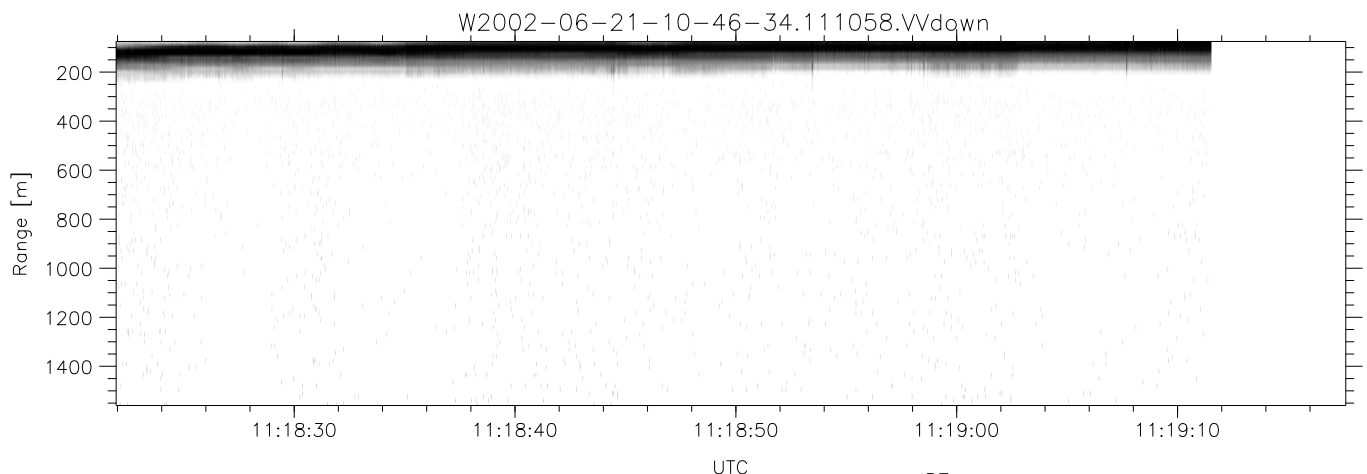
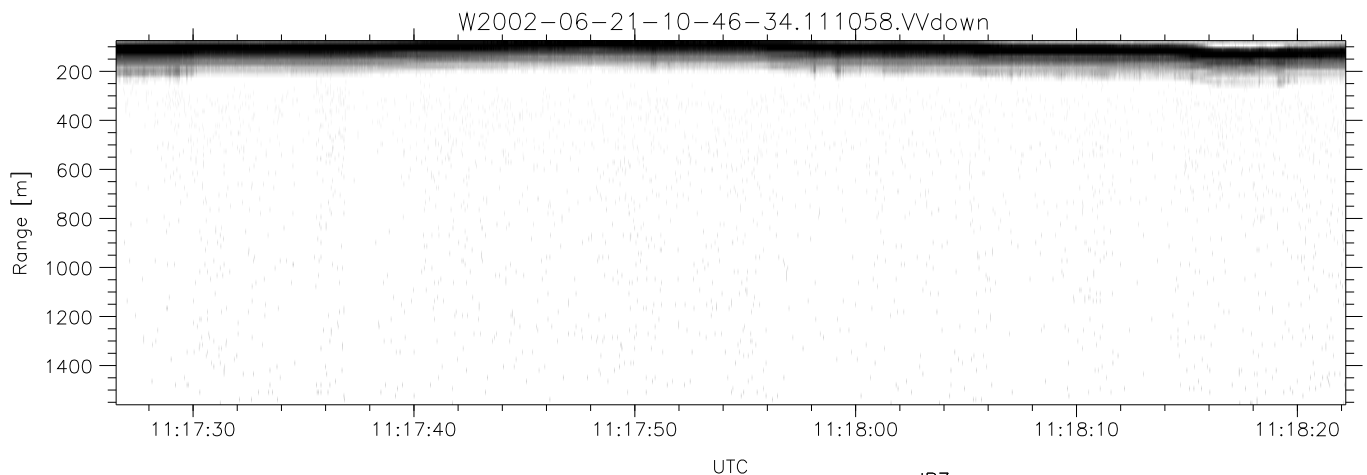
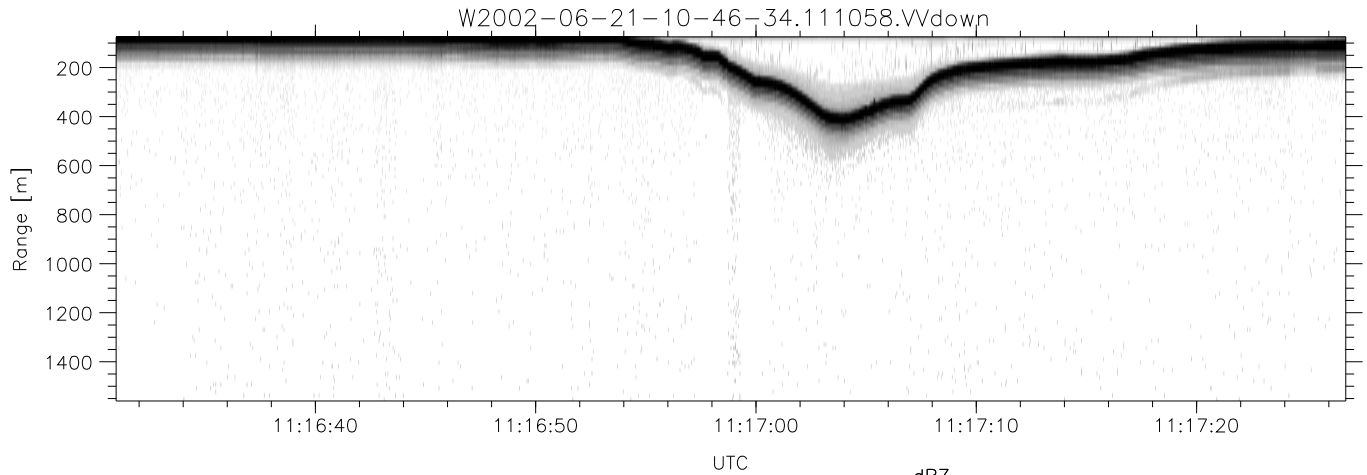
W2002-06-21-10-46-34 - PPMAG4
 IRIG:1,UTC: 10:46:21.22 to 13:48:33.67, Dur: 10932s
 TimeLngth: 10932.44s, TimeInt: 29ms (34.3pps)
 TimeCor=-13.0s, DSPDif(mn,min,mx):28,28,331
 PPS(min,max,std): 24,36,2.27
 Prof: 398 to 375046, NumProf(t/r): 374648/17069
 ProcTime/Recs: 11:10:58-11:19:11/51207-68275
 MxACQtime: 33ms; DRate: 191.8KB/s; Flags: 1, 0, 0
 Pulse: 275ns, IFfilt: 5.0MHz; ppPol: HH HV VV
 TxPol: HHVV, PRF: 20 10 20 10 kHz
 Range: Delay 75m, Spacing 15m, Gates 100
 Ave. Pulses: 84, Rng/Prof Aspect@90m/s: 5.7

	Min	Max	Mean	Std	Varc%
hhN(dB)	-66.90	-63.37	-65.20	-75.27	9.8
vvN(dB)	-65.84	-62.40	-64.16	-74.19	9.9
hhL(dB)	-8.08	-2.26	-4.40	-12.41	15.8
vvL(dB)	-10.64	-0.70	-5.56	-9.75	38.1
ppN(m/s)	-12.73	12.58	0.03	4.12	
ppT(m/s)	-100.5	99.35	0.21	32.54	
hh/vv(dB)	-NaN	35.04	-NaN	26.04	-782
vh/hh(dB)	-99.00	-99.00	-99.00	-99.00	-99.
hv/vv(dB)	-NaN	-16.45	-37.08	-32.67	276.
hnjmp(dB)	-2.12	2.77	0.15	-8.46	13.8
vnjmp(dB)	-2.05	2.41	0.16	-8.43	13.8



IHOP 2002 (dual-antenna config, modes 1,3,4,7) Data (cal: 49.0,50.0)

	Min	Max	Mean	Std	Varc%	
W2002-06-21-10-46-34 - PPMAG4						
IRIG:1,UTC: 10:46:21.22 to 13:48:33.67, Dur: 10932s	hhN(dB)	-66.90	-63.37	-65.20	-75.27	9.8
TimeLngth: 10932.44s, TimeInt: 29ms (34.3pps)	vvN(dB)	-65.84	-62.40	-64.16	-74.19	9.9
TimeCor=-13.0s, DSPDif(mn,min,mx):28,28,331	hhL(dB)	-8.08	-2.26	-4.40	-12.41	15.8
PPS(min,max,std): 24,36,2.27	vvL(dB)	-10.64	-0.70	-5.56	-9.75	38.1
Prof: 398 to 375046, NumProf(t/r): 374648/17069	ppN(m/s)	-12.73	12.58	0.03	4.12	
ProcTime/Recs: 11:10:58-11:19:11/51207-68275	ppT(m/s)	-100.5	99.35	0.21	32.54	
MxACQtime: 33ms; DRate: 191.8KB/s; Flags: 1, 0, 0	hh/vv(dB)	-NaN	35.04	-NaN	26.04	-782
Pulse: 275ns, IFilt: 5.0MHz; ppPol: HH HV VV	vh/hh(dB)	-99.00	-99.00	-99.00	-99.00	-99.
TxPol: HHVV, PRF: 20 10 20 10 kHz	hv/vv(dB)	-NaN	-16.45	-37.08	-32.67	276.
Range: Delay 75m, Spacing 15m, Gates 100	hnjmp(dB)	-2.12	2.77	0.15	-8.46	13.8
Ave. Pulses: 84, Rng/Prof Aspect@90m/s: 5.7	vnjmp(dB)	-2.05	2.41	0.16	-8.43	13.8



IHOP 2002 (dual-antenna config, modes 1,3,4,7) Data (cal: 49.0,50.0)

W2002-06-21-10-46-34 - PPMAG4
 IRIG:1,UTC: 10:46:21.22 to 13:48:33.67, Dur: 10932s
 TimeLngth: 10932.44s, TimeInt: 29ms (34.3pps)
 TimeCor=-13.0s, DSPDif(mn,min,mx):28,28,331
 PPS(min,max,std): 24,36,2.27
 Prof: 398 to 375046, NumProf(t/r): 374648/17069
 ProcTime/Recs: 11:10:58-11:19:11/51207-68275
 MxACQtime: 33ms; DRate: 191.8KB/s; Flags: 1, 0, 0
 Pulse: 275ns, IFfilt: 5.0MHz; ppPol: HH HV VV
 TxPol: HHVV, PRF: 20 10 20 10 kHz
 Range: Delay 75m, Spacing 15m, Gates 100
 Ave. Pulses: 84, Rng/Prof Aspect@90m/s: 5.7

	Min	Max	Mean	Std	Varc%
hhN(dB)	-66.90	-63.37	-65.20	-75.27	9.8
vvN(dB)	-65.84	-62.40	-64.16	-74.19	9.9
hhL(dB)	-8.08	-2.26	-4.40	-12.41	15.8
vvL(dB)	-10.64	-0.70	-5.56	-9.75	38.1
ppN(m/s)	-12.73	12.58	0.03	4.12	
ppT(m/s)	-100.5	99.35	0.21	32.54	
hh/vv(dB)	-NaN	35.04	-NaN	26.04	-782
vh/hh(dB)	-99.00	-99.00	-99.00	-99.00	-99.
hv/vv(dB)	-NaN	-16.45	-37.08	-32.67	276.
hnjmp(dB)	-2.12	2.77	0.15	-8.46	13.8
vnjmp(dB)	-2.05	2.41	0.16	-8.43	13.8