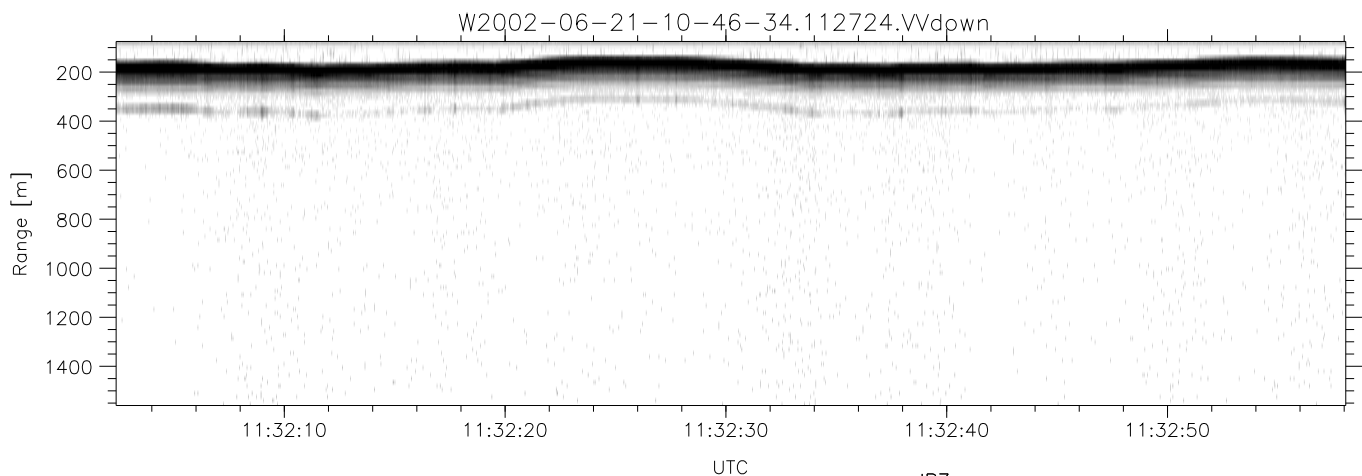
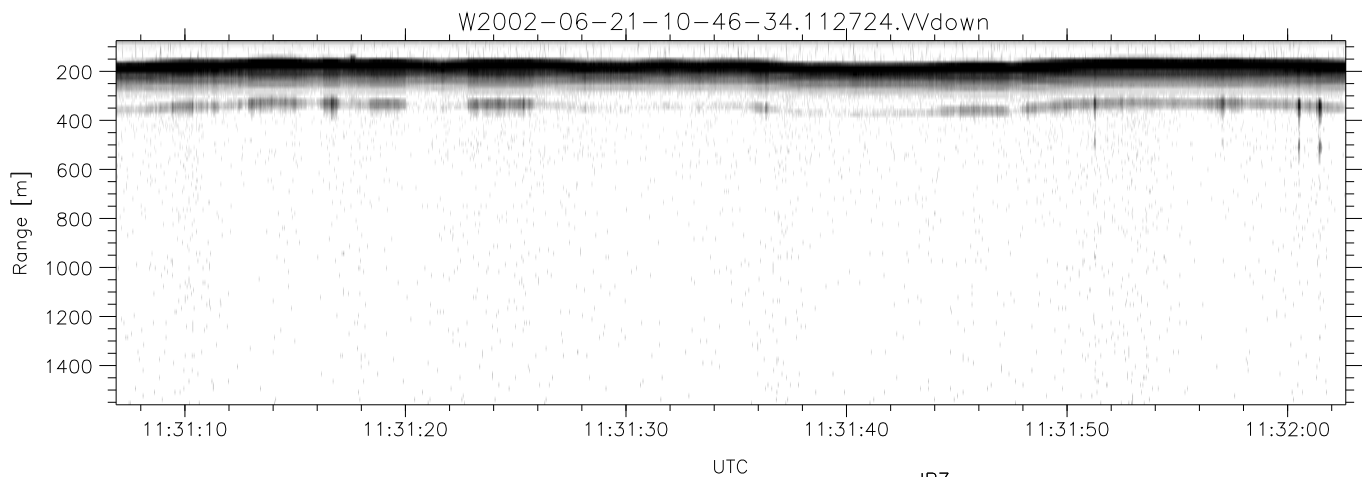
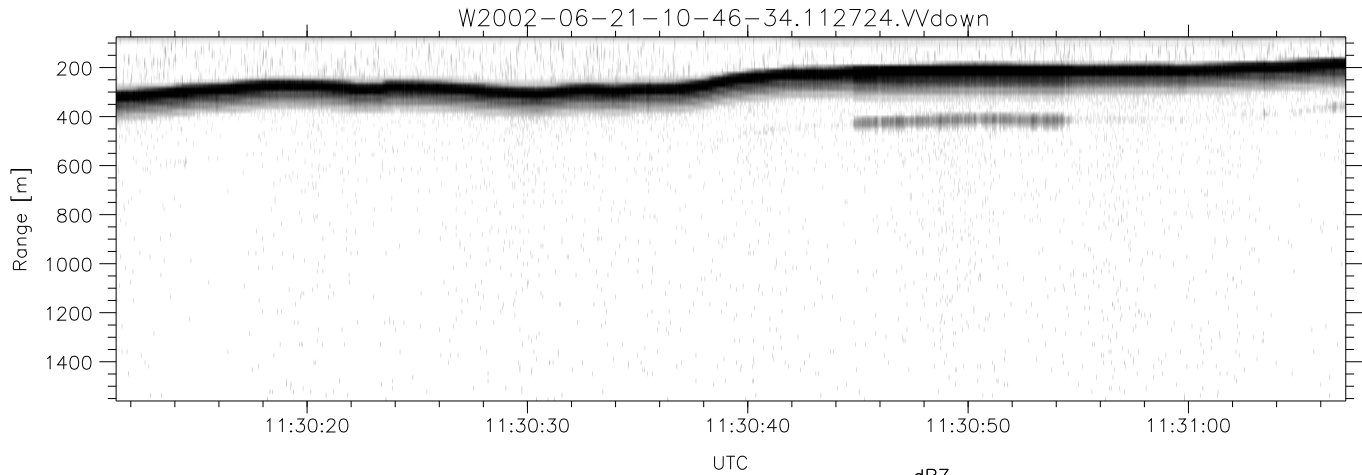


IHOP 2002 (dual-antenna config, modes 1,3,4,7) Data (cal: 49.0,50.0)

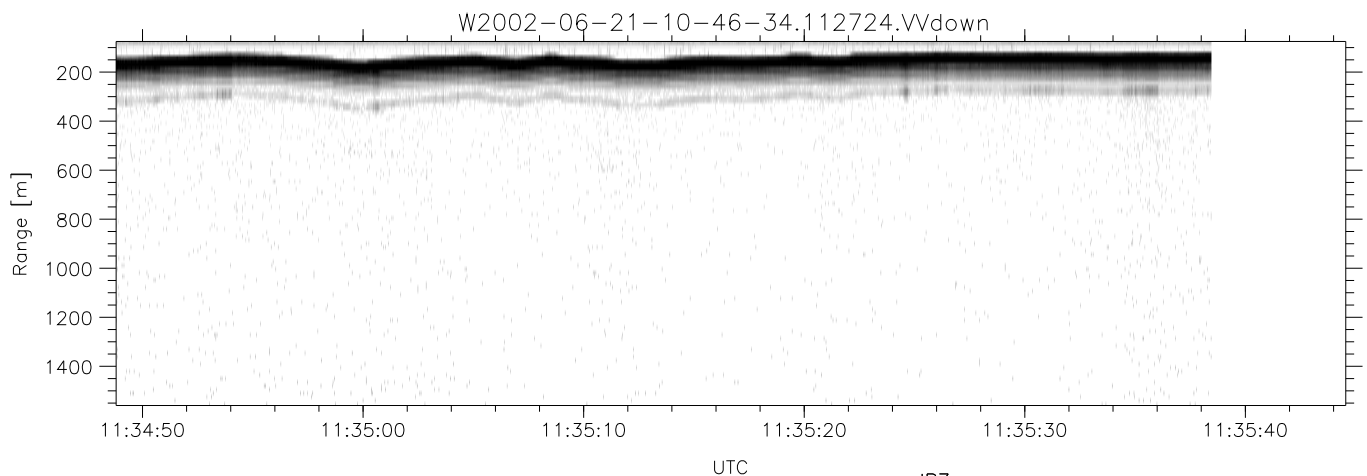
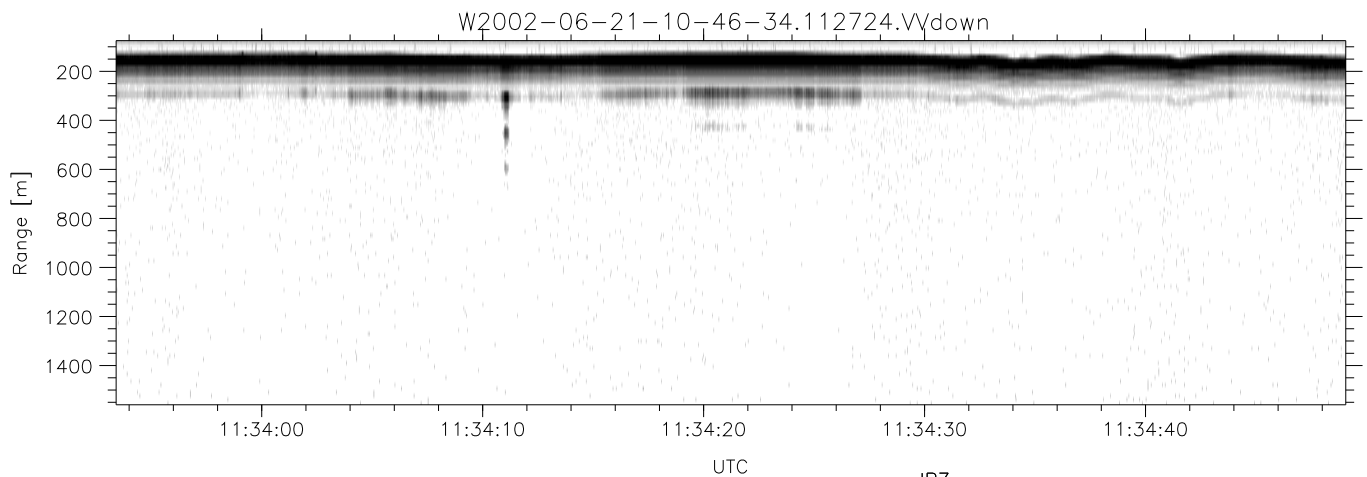
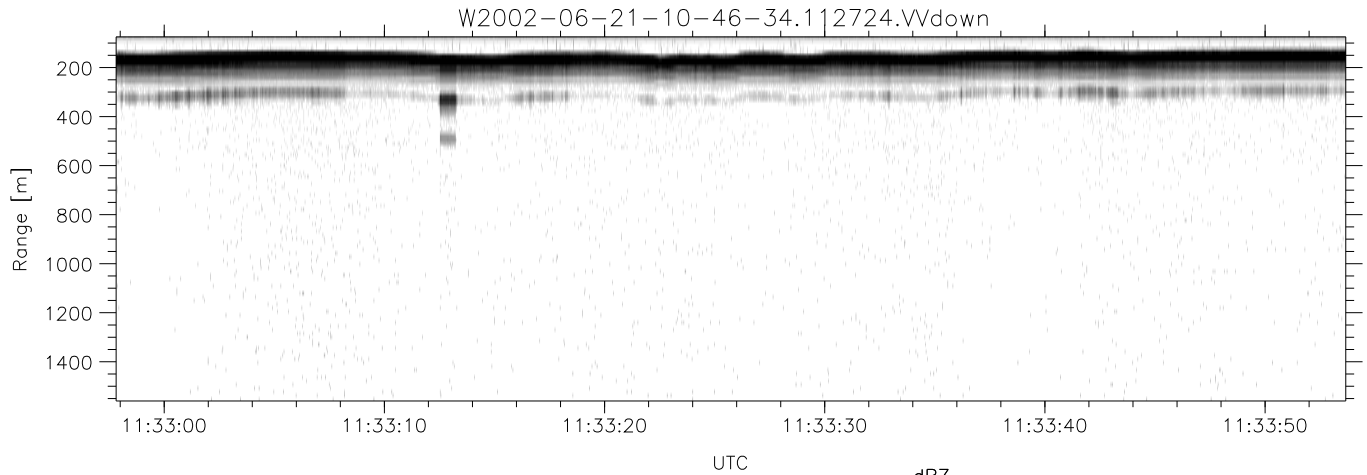
W2002-06-21-10-46-34 - PPMAG4	Min	Max	Mean	Std	Varc%	
IRIG:1,UTC: 10:46:21.22 to 13:48:33.67, Dur: 10932s	hhN (dB)	-66.97	-63.62	-65.31	-75.45	9.7
TimeLngth: 10932.44s, TimeInt: 29ms (34.3pps)	vvN (dB)	-66.04	-62.51	-64.27	-74.31	9.9
TimeCor=-13.0s, DSPDif(mn,min,mx):28,28,310	hhL (dB)	-8.76	-2.67	-5.25	-13.02	16.7
PPS(min,max,std): 25,36,2.17	vvL (dB)	-10.57	-0.69	-6.89	-10.16	47.0
Prof: 398 to 375046, NumProf(t/r): 374648/17069	ppN (m/s)	-12.61	12.11	-0.02	4.13	
ProcTime/Recs: 11:27:24-11:35:38/85345-102413	ppT (m/s)	-99.63	95.70	-0.15	32.65	
MxACQtime: 33ms; DRate: 191.8KB/s; Flags: 1, 0, 0	hh/vv (dB)	-NaN	43.07	15.79	28.41	1830
Pulse: 275ns, IFilt: 5.0MHz; ppPol: HH HV VV	vh/hh (dB)	-NaN	-33.61	-NaN	-32.84	-853
TxPol: HHVV, PRF: 20 10 20 10 kHz	hv/vv (dB)	-NaN	-33.57	-50.57	-45.46	324.
Range: Delay 75m, Spacing 15m, Gates 100	hn_jmp (dB)	-2.06	2.27	0.15	-8.51	13.6
Ave. Pulses: 84, Rng/Prof Aspect@90m/s: 5.7	vn_jmp (dB)	-2.31	2.26	0.17	-8.36	14.0



IHOP 2002 (dual-antenna config, modes 1,3,4,7) Data (cal: 49.0,50.0)

W2002-06-21-10-46-34 - PPMAG4
 IRIG:1,UTC: 10:46:21.22 to 13:48:33.67, Dur: 10932s
 TimeLngth: 10932.44s, TimeInt: 29ms (34.3pps)
 TimeCor=-13.0s, DSPDif(mn,min,mx):28,28,310
 PPS(min,max,std): 25,36,2.17
 Prof: 398 to 375046, NumProf(t/r): 374648/17069
 ProcTime/Recs: 11:27:24-11:35:38/85345-102413
 MxAcQtime: 33ms; DRate: 191.8KB/s; Flags: 1, 0, 0
 Pulse: 275ns, IFfilt: 5.0MHz; ppPol: HH HV VV
 TxPol: HHVV, PRF: 20 10 20 10 kHz
 Range: Delay 75m, Spacing 15m, Gates 100
 Ave. Pulses: 84, Rng/Prof Aspect@90m/s: 5.7

	Min	Max	Mean	Std	Varc%
hhN(dB)	-66.97	-63.62	-65.31	-75.45	9.7
vvN(dB)	-66.04	-62.51	-64.27	-74.31	9.9
hhL(dB)	-8.76	-2.67	-5.25	-13.02	16.7
vvL(dB)	-10.57	-0.69	-6.89	-10.16	47.0
ppN(m/s)	-12.61	12.11	-0.02	4.13	
ppT(m/s)	-99.63	95.70	-0.15	32.65	
hh/vv(dB)	-NaN	43.07	15.79	28.41	1830
vh/hh(dB)	-NaN	-33.61	-NaN	-32.84	-853
hv/vv(dB)	-NaN	-33.57	-50.57	-45.46	324.
hnjmp(dB)	-2.06	2.27	0.15	-8.51	13.6
vnjmp(dB)	-2.31	2.26	0.17	-8.36	14.0



IHOP 2002 (dual-antenna config, modes 1,3,4,7) Data (cal: 49.0,50.0)

W2002-06-21-10-46-34 - PPMAG4
 IRIG:1,UTC: 10:46:21.22 to 13:48:33.67, Dur: 10932s
 TimeLngth: 10932.44s, TimeInt: 29ms (34.3pps)
 TimeCor=-13.0s, DSPDif(mn,min,mx):28,28,310
 PPS(min,max,std): 25,36,2.17
 Prof: 398 to 375046, NumProf(t/r): 374648/17069
 ProcTime/Recs: 11:27:24-11:35:38/85345-102413
 MxACQtime: 33ms; DRate: 191.8KB/s; Flags: 1, 0, 0
 Pulse: 275ns, IFfilt: 5.0MHz; ppPol: HH HV VV
 TxPol: HHVV, PRF: 20 10 20 10 kHz
 Range: Delay 75m, Spacing 15m, Gates 100
 Ave. Pulses: 84, Rng/Prof Aspect@90m/s: 5.7

	Min	Max	Mean	Std	Varc%
hhN(dB)	-66.97	-63.62	-65.31	-75.45	9.7
vvN(dB)	-66.04	-62.51	-64.27	-74.31	9.9
hhL(dB)	-8.76	-2.67	-5.25	-13.02	16.7
vvL(dB)	-10.57	-0.69	-6.89	-10.16	47.0
ppN(m/s)	-12.61	12.11	-0.02	4.13	
ppT(m/s)	-99.63	95.70	-0.15	32.65	
hh/vv(dB)	-NaN	43.07	15.79	28.41	1830
vh/hh(dB)	-NaN	-33.61	-NaN	-32.84	-853
hv/vv(dB)	-NaN	-33.57	-50.57	-45.46	324.
hnjmp(dB)	-2.06	2.27	0.15	-8.51	13.6
vnjmp(dB)	-2.31	2.26	0.17	-8.36	14.0