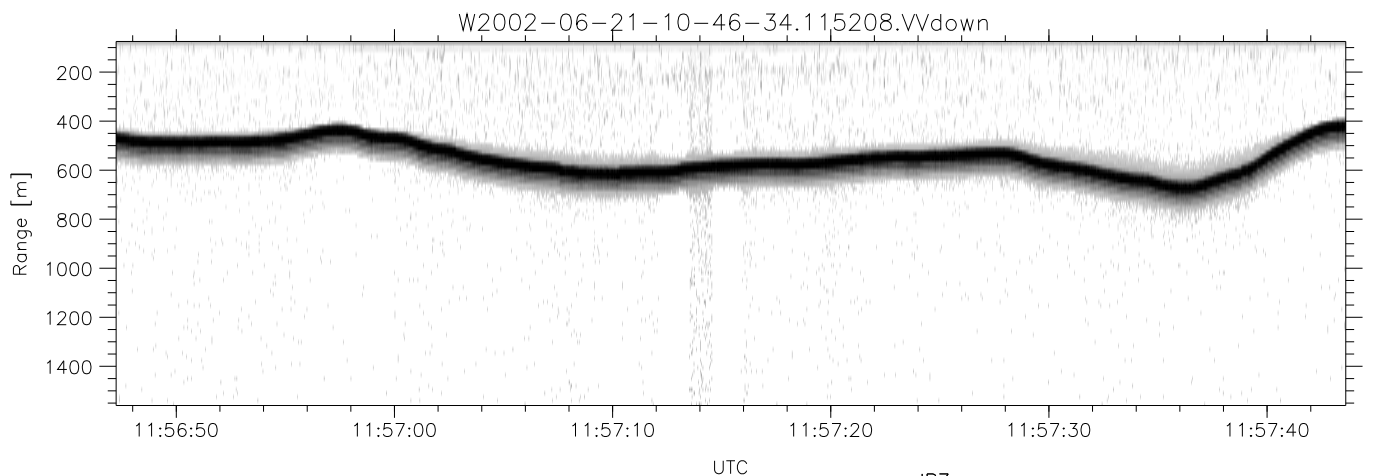
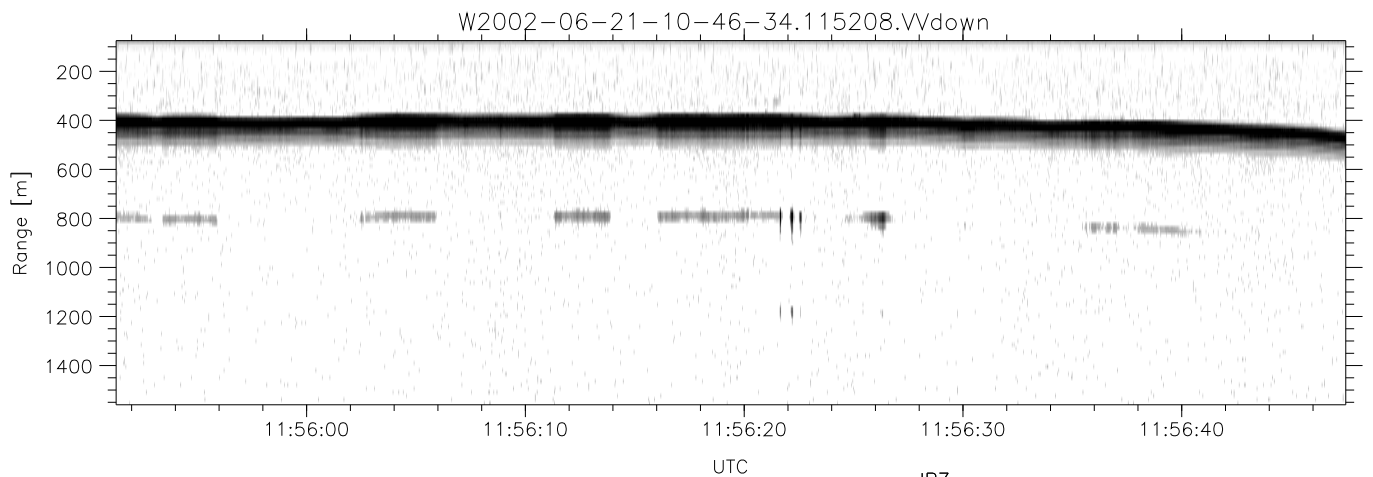
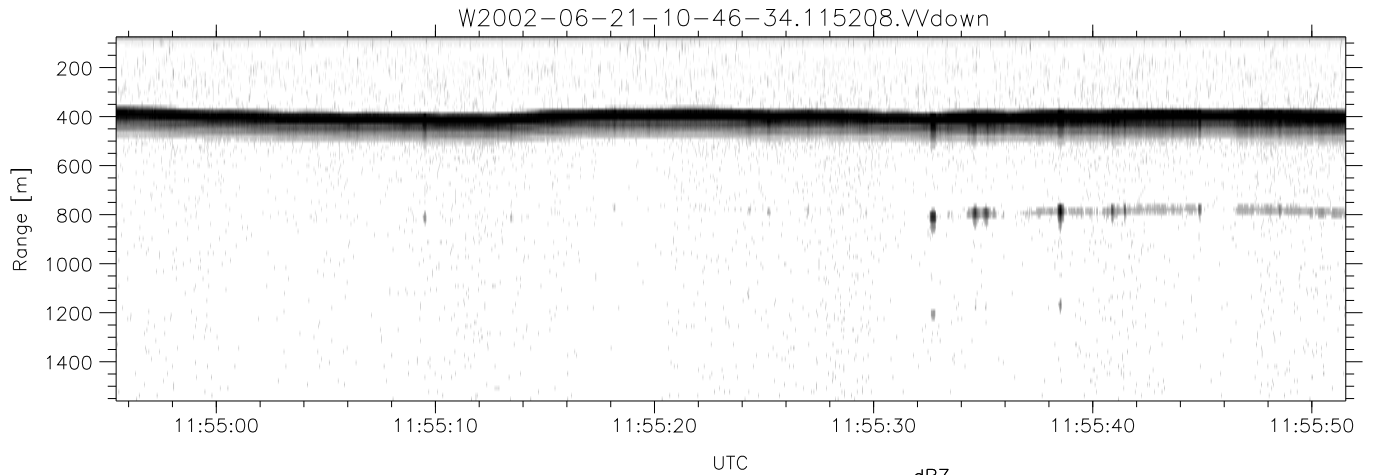


IHOP 2002 (dual-antenna config, modes 1,3,4,7) Data (cal: 49.0,50.0)

W2002-06-21-10-46-34 - PPMAG4
 IRIG:1,UTC: 10:46:21.22 to 13:48:33.67, Dur: 10932s
 TimeLngth: 10932.44s, TimeInt: 29ms (34.3pps)
 TimeCor=-13.0s, DSPDif(mn,min,mx):29,28,369
 PPS(min,max,std): 23,36,2.24
 Prof: 398 to 375046, NumProf(t/r): 374648/17069
 ProcTime/Recs: 11:52:08-12:00:25/136552-153620
 MxACQtime: 33ms; DRate: 191.8KB/s; Flags: 1, 0, 0
 Pulse: 275ns, IFfilt: 5.0MHz; ppPol: HH HV VV
 TxPol: HHVV, PRF: 20 10 20 10 kHz
 Range: Delay 75m, Spacing 15m, Gates 100
 Ave. Pulses: 84, Rng/Prof Aspect@90m/s: 5.7

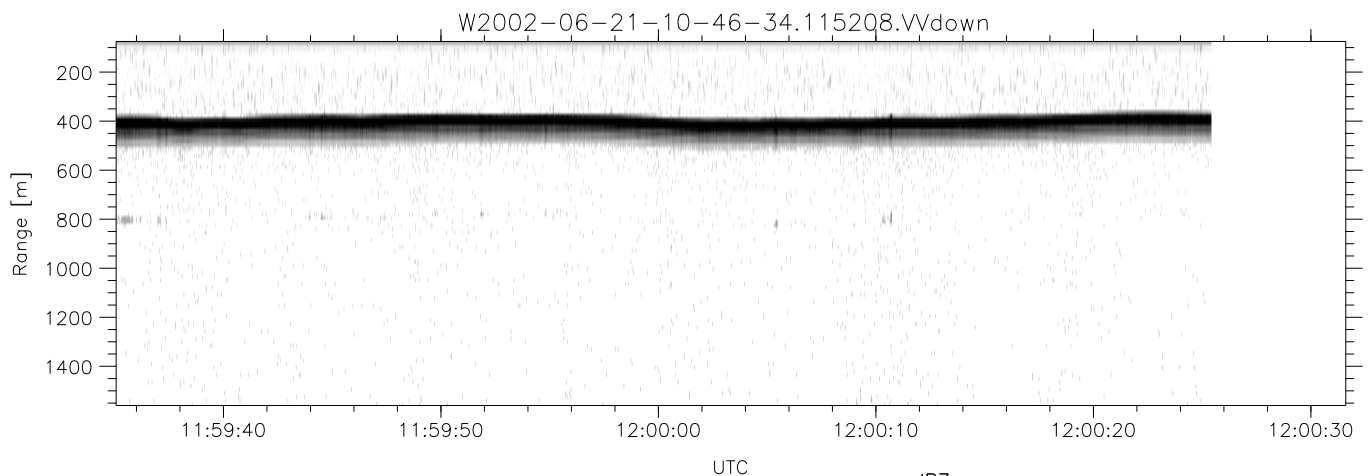
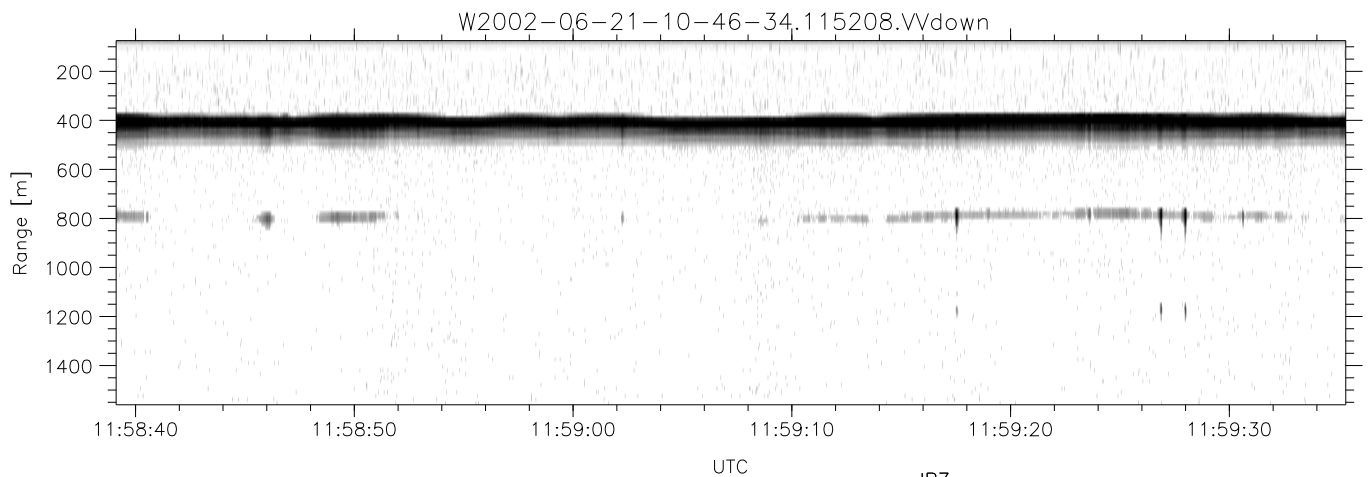
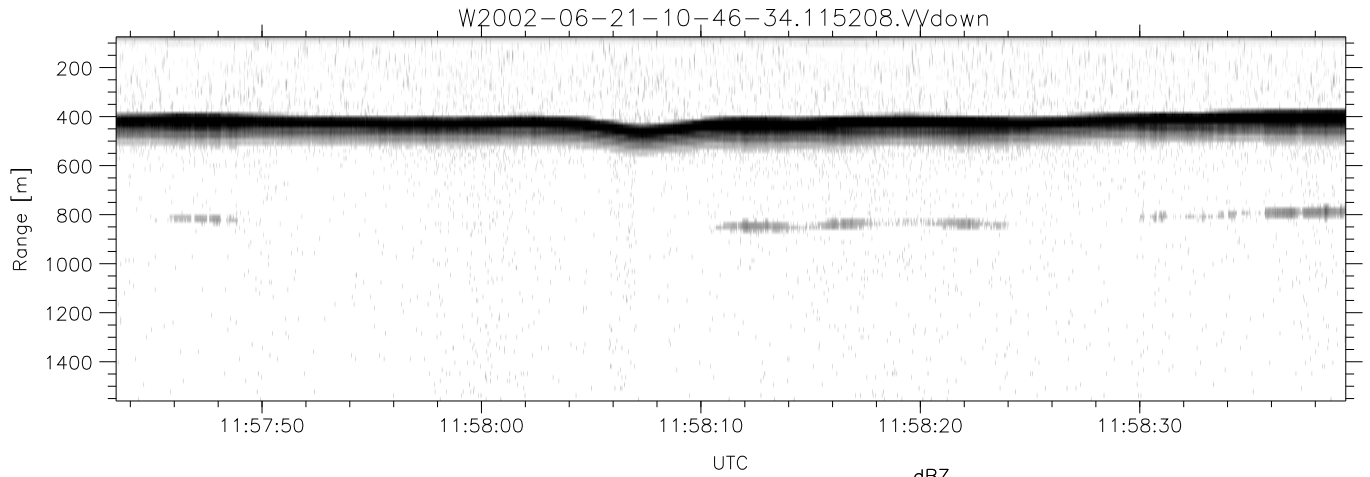
	Min	Max	Mean	Std	Varc%
hhN(dB)	-67.22	-63.44	-65.51	-75.51	10.0
vvN(dB)	-66.17	-62.14	-64.43	-74.40	10.1
hhL(dB)	-6.20	-2.70	-4.72	-14.42	10.7
vvL(dB)	-6.43	-1.23	-4.72	-13.14	14.4
ppN(m/s)	-12.62	11.83	-0.03	4.14	
ppT(m/s)	-99.71	93.47	-0.22	32.69	
hh/vv(dB)	-NaN	37.62	18.70	27.57	771.
vh/hh(dB)	-99.00	-99.00	-99.00	-99.00	-99.
hv/vv(dB)	-NaN	-31.18	-53.38	-45.96	552.
hnjmp(dB)	-2.14	1.91	-0.07	-8.71	13.7
vnjmp(dB)	-2.39	2.52	-0.07	-8.62	14.0



IHOP 2002 (dual-antenna config, modes 1,3,4,7) Data (cal: 49.0,50.0)

W2002-06-21-10-46-34 - PPMAG4
 IRIG:1,UTC: 10:46:21.22 to 13:48:33.67, Dur: 10932s
 TimeLngth: 10932.44s, TimeInt: 29ms (34.3pps)
 TimeCor=-13.0s, DSPDif(mn,min,mx):29,28,369
 PPS(min,max,std): 23,36,2.24
 Prof: 398 to 375046, NumProf(t/r): 374648/17069
 ProcTime/Recs: 11:52:08-12:00:25/136552-153620
 MxACQtime: 33ms; DRate: 191.8KB/s; Flags: 1, 0, 0
 Pulse: 275ns, IFilt: 5.0MHz; ppPol: HH HV VV
 TxPol: HHVV, PRF: 20 10 20 10 kHz
 Range: Delay 75m, Spacing 15m, Gates 100
 Ave. Pulses: 84, Rng/Prof Aspect@90m/s: 5.7

	Min	Max	Mean	Std	Varc%
hhN(dB)	-67.22	-63.44	-65.51	-75.51	10.0
vvN(dB)	-66.17	-62.14	-64.43	-74.40	10.1
hhL(dB)	-6.20	-2.70	-4.72	-14.42	10.7
vvL(dB)	-6.43	-1.23	-4.72	-13.14	14.4
ppN(m/s)	-12.62	11.83	-0.03	4.14	
ppT(m/s)	-99.71	93.47	-0.22	32.69	
hh/vv(dB)	-NaN	37.62	18.70	27.57	771.
vh/hh(dB)	-99.00	-99.00	-99.00	-99.00	-99.
hv/vv(dB)	-NaN	-31.18	-53.38	-45.96	552.
hnjmp(dB)	-2.14	1.91	-0.07	-8.71	13.7
vnjmp(dB)	-2.39	2.52	-0.07	-8.62	14.0



IHOP 2002 (dual-antenna config, modes 1,3,4,7) Data (cal: 49.0,50.0)

W2002-06-21-10-46-34 - PPMAG4	Min	Max	Mean	Std	Varc%	
IRIG:1,UTC: 10:46:21.22 to 13:48:33.67, Dur: 10932s	hhN(dB)	-67.22	-63.44	-65.51	-75.51	10.0
TimeLngth: 10932.44s, TimeInt: 29ms (34.3pps)	vvN(dB)	-66.17	-62.14	-64.43	-74.40	10.1
TimeCor=-13.0s, DSPDif(mn,min,mx):29,28,369	hhL(dB)	-6.20	-2.70	-4.72	-14.42	10.7
PPS(min,max,std): 23,36,2.24	vvL(dB)	-6.43	-1.23	-4.72	-13.14	14.4
Prof: 398 to 375046, NumProf(t/r): 374648/17069	ppN(m/s)	-12.62	11.83	-0.03	4.14	
ProcTime/Recs: 11:52:08-12:00:25/136552-153620	ppT(m/s)	-99.71	93.47	-0.22	32.69	
MxAcQtime: 33ms; DRate: 191.8KB/s; Flags: 1, 0, 0	hh/vv(dB)	-NaN	37.62	18.70	27.57	771.
Pulse: 275ns, IFilt: 5.0MHz; ppPol: HH HV VV	vh/hh(dB)	-99.00	-99.00	-99.00	-99.00	-99.
TxPol: HHVV, PRF: 20 10 20 10 kHz	hv/vv(dB)	-NaN	-31.18	-53.38	-45.96	552.
Range: Delay 75m, Spacing 15m, Gates 100	hnjmp(dB)	-2.14	1.91	-0.07	-8.71	13.7
Ave. Pulses: 84, Rng/Prof Aspect@90m/s: 5.7	vnjmp(dB)	-2.39	2.52	-0.07	-8.62	14.0