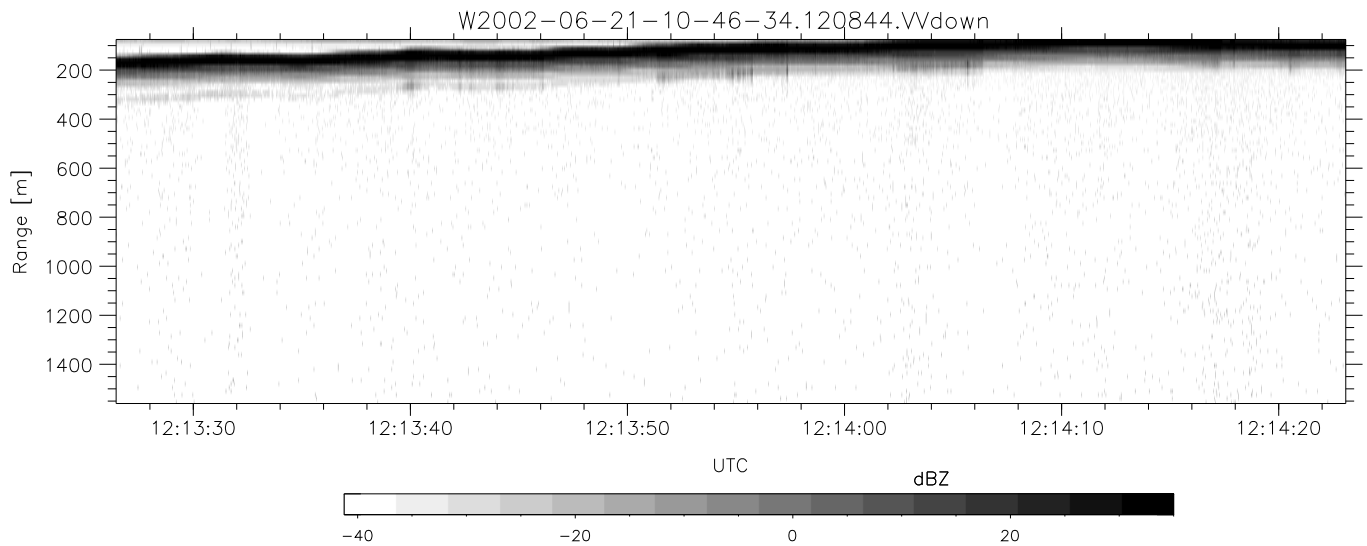
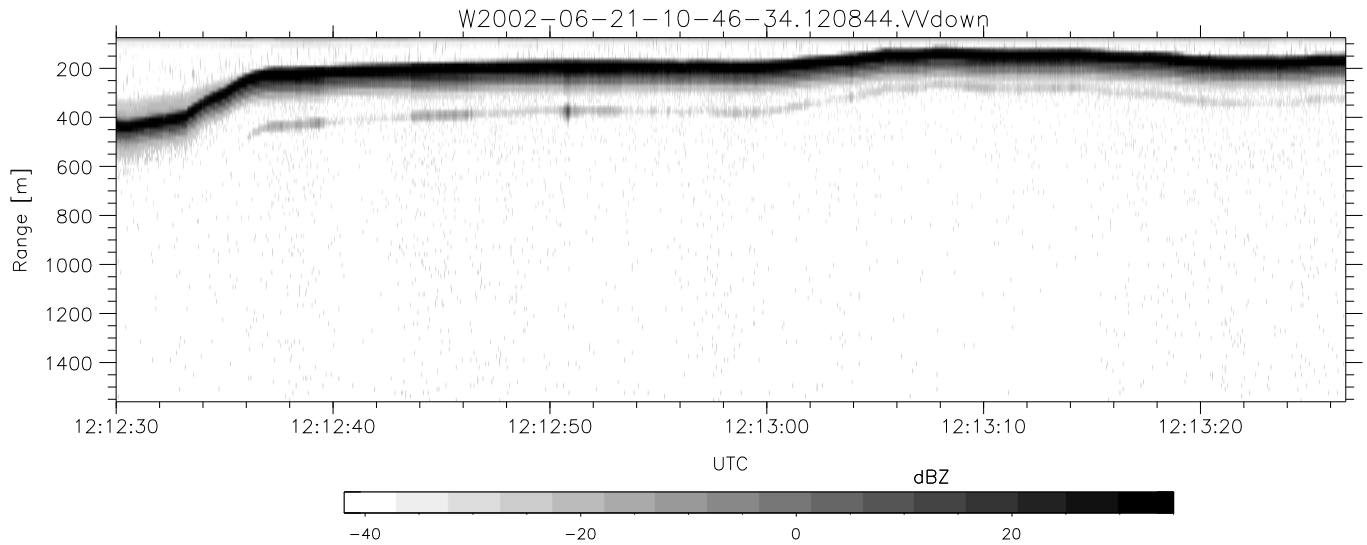
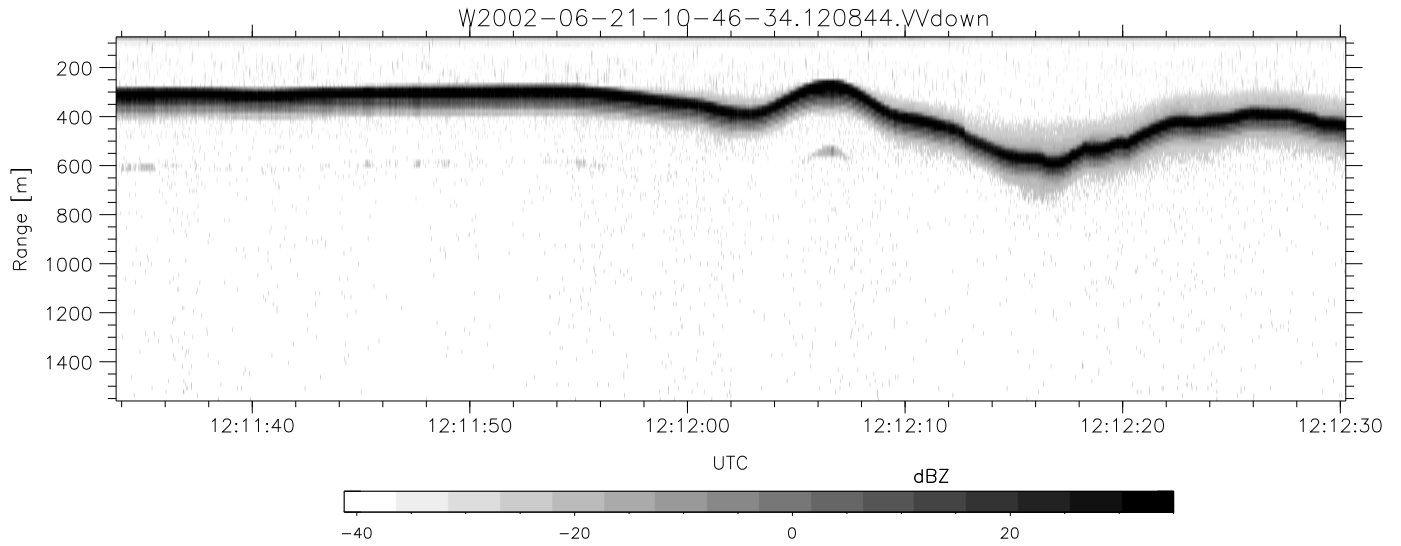


IHOP 2002 (dual-antenna config, modes 1,3,4,7) Data (cal: 49.0,50.0)

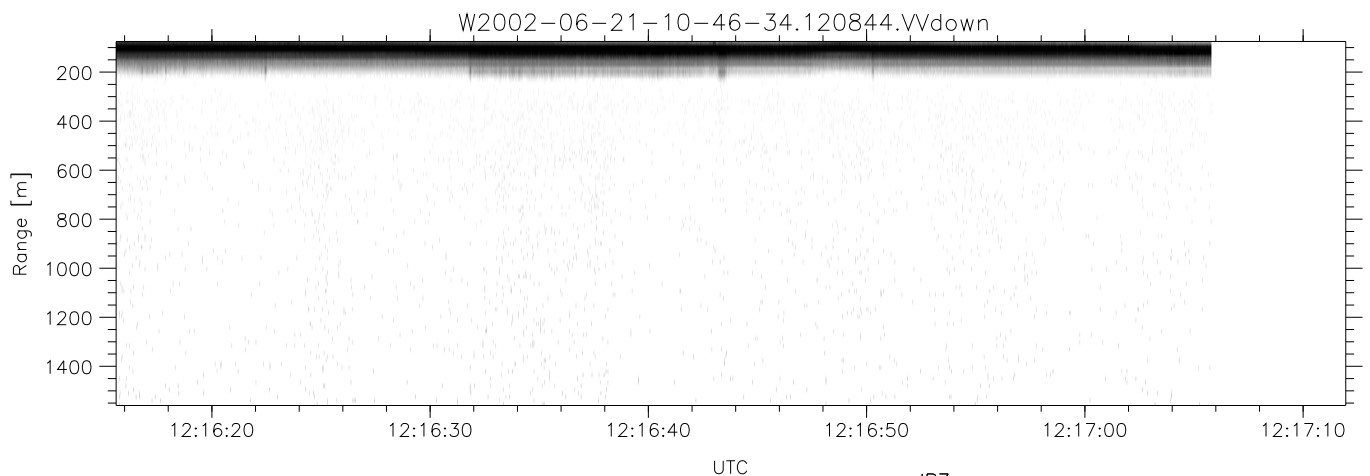
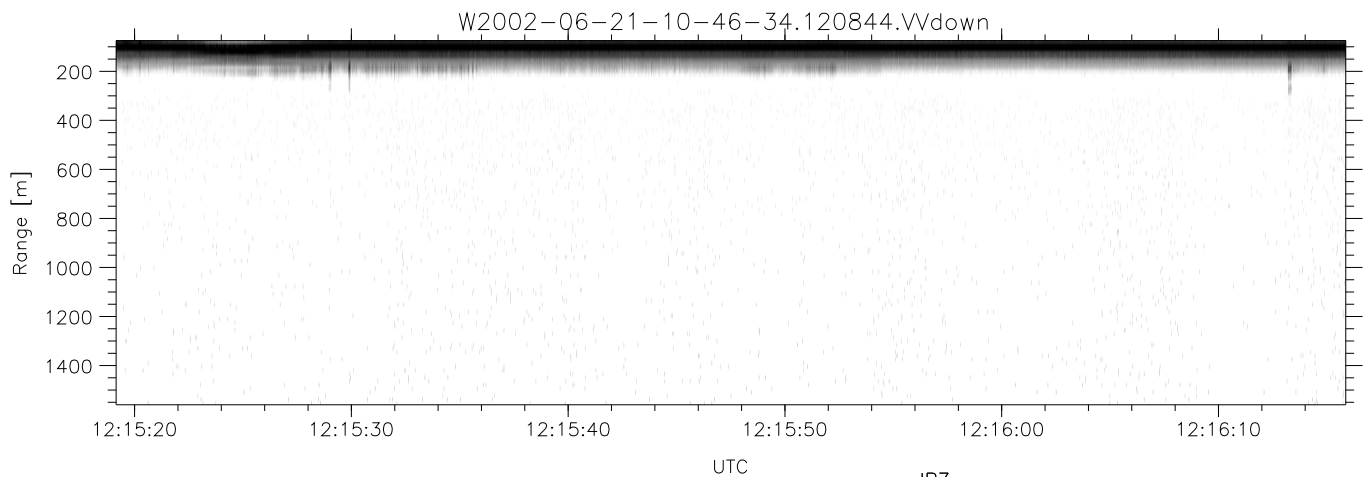
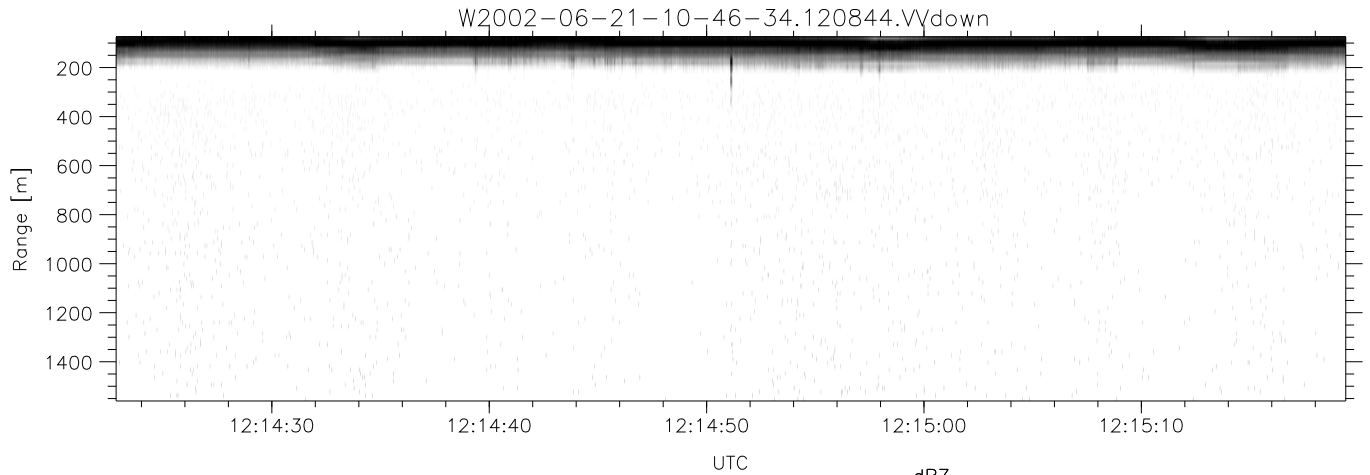
W2002-06-21-10-46-34 - PPMAG4
 IRIG:1,UTC: 10:46:21.22 to 13:48:33.67, Dur: 10932s
 TimeLngth: 10932.44s, TimeInt: 29ms (34.3pps)
 TimeCor=-13.0s, DSPDif(mn,min,mx):29,28,342
 PPS(min,max,std): 24,36,2.31
 Prof: 398 to 375046, NumProf(t/r): 374648/17069
 ProcTime/Recs: 12:08:44-12:17:05/170690-187758
 MxACQtime: 33ms; DRate: 191.8KB/s; Flags: 1, 0, 0
 Pulse: 275ns, IFfilt: 5.0MHz; ppPol: HH HV VV
 TxPol: HHVV, PRF: 20 10 20 10 kHz
 Range: Delay 75m, Spacing 15m, Gates 100
 Ave. Pulses: 84, Rng/Prof Aspect@90m/s: 5.7

	Min	Max	Mean	Std	Varc%
hhN(dB)	-67.14	-63.95	-65.52	-75.62	9.8
vvN(dB)	-66.37	-62.87	-64.56	-74.60	9.9
hhL(dB)	-9.53	-2.15	-6.02	-12.44	22.8
vvL(dB)	-10.60	-1.96	-5.76	-10.47	33.8
ppN(m/s)	-12.64	12.62	-0.03	4.18	
ppT(m/s)	-99.87	99.68	-0.23	33.03	
hh/vv(dB)	-NaN	37.72	18.79	26.03	530.
vh/hh(dB)	-NaN	-32.51	-37.92	-33.87	254.
hv/vv(dB)	-NaN	-14.50	-42.53	-36.67	385.
hnjmp(dB)	-2.49	1.97	-0.07	-8.63	13.9
vnjmp(dB)	-2.81	2.07	-0.08	-8.69	13.8



IHOP 2002 (dual-antenna config, modes 1,3,4,7) Data (cal: 49.0,50.0)

W2002-06-21-10-46-34 - PPMAG4	Min	Max	Mean	Std	Varc%	
IRIG:1,UTC: 10:46:21.22 to 13:48:33.67, Dur: 10932s	hhN (dB)	-67.14	-63.95	-65.52	-75.62	9.8
TimeLngth: 10932.44s, TimeInt: 29ms (34.3pps)	vvN (dB)	-66.37	-62.87	-64.56	-74.60	9.9
TimeCor=-13.0s, DSPDif(mn,min,mx):29,28,342	hhL (dB)	-9.53	-2.15	-6.02	-12.44	22.8
PPS(min,max,std): 24,36,2.31	vvL (dB)	-10.60	-1.96	-5.76	-10.47	33.8
Prof: 398 to 375046, NumProf(t/r): 374648/17069	ppN (m/s)	-12.64	12.62	-0.03	4.18	
ProcTime/Recs: 12:08:44-12:17:05/170690-187758	ppT (m/s)	-99.87	99.68	-0.23	33.03	
MxAcQtime: 33ms; DRate: 191.8KB/s; Flags: 1, 0, 0	hh/vv (dB)	-NaN	37.72	18.79	26.03	530.
Pulse: 275ns, IFilt: 5.0MHz; ppPol: HH HV VV	vh/hh (dB)	-NaN	-32.51	-37.92	-33.87	254.
TxPol: HHVV, PRF: 20 10 20 10 kHz	hv/vv (dB)	-NaN	-14.50	-42.53	-36.67	385.
Range: Delay 75m, Spacing 15m, Gates 100	hn/jmp (dB)	-2.49	1.97	-0.07	-8.63	13.9
Ave. Pulses: 84, Rng/Prof Aspect@90m/s: 5.7	vn/jmp (dB)	-2.81	2.07	-0.08	-8.69	13.8



IHOP 2002 (dual-antenna config, modes 1,3,4,7) Data (cal: 49.0,50.0)

W2002-06-21-10-46-34 - PPMAG4	Min	Max	Mean	Std	Varc%	
IRIG:1,UTC: 10:46:21.22 to 13:48:33.67, Dur: 10932s	hhN(dB)	-67.14	-63.95	-65.52	-75.62	9.8
TimeLngth: 10932.44s, TimeInt: 29ms (34.3pps)	vvN(dB)	-66.37	-62.87	-64.56	-74.60	9.9
TimeCor=-13.0s, DSPDif(mn,min,mx):29,28,342	hhL(dB)	-9.53	-2.15	-6.02	-12.44	22.8
PPS(min,max,std): 24,36,2.31	vvL(dB)	-10.60	-1.96	-5.76	-10.47	33.8
Prof: 398 to 375046, NumProf(t/r): 374648/17069	ppN(m/s)	-12.64	12.62	-0.03	4.18	
ProcTime/Recs: 12:08:44-12:17:05/170690-187758	ppT(m/s)	-99.87	99.68	-0.23	33.03	
MxACQtime: 33ms; DRate: 191.8KB/s; Flags: 1, 0, 0	hh/vv(dB)	-NaN	37.72	18.79	26.03	530.
Pulse: 275ns, IFilt: 5.0MHz; ppPol: HH HV VV	vh/hh(dB)	-NaN	-32.51	-37.92	-33.87	254.
TxPol: HHVV, PRF: 20 10 20 10 kHz	hv/vv(dB)	-NaN	-14.50	-42.53	-36.67	385.
Range: Delay 75m, Spacing 15m, Gates 100	hnjmp(dB)	-2.49	1.97	-0.07	-8.63	13.9
Ave. Pulses: 84, Rng/Prof Aspect@90m/s: 5.7	vnjmp(dB)	-2.81	2.07	-0.08	-8.69	13.8