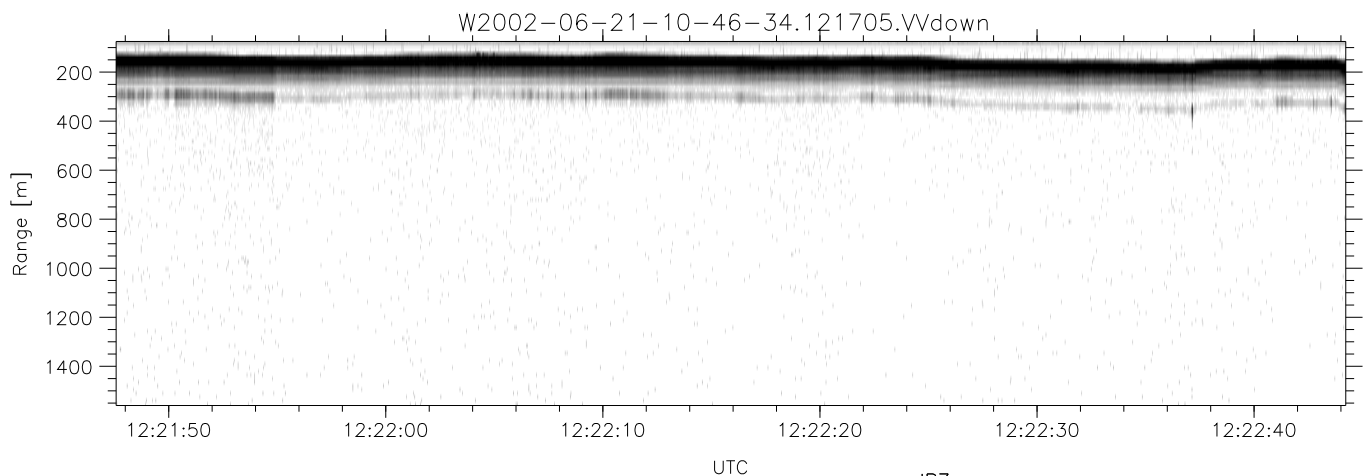
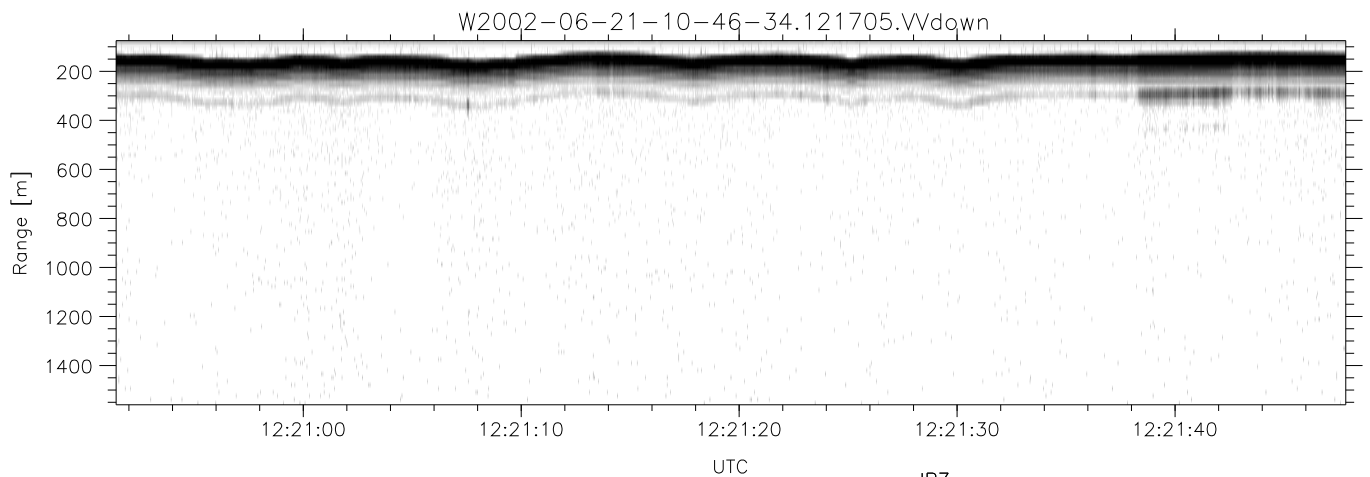
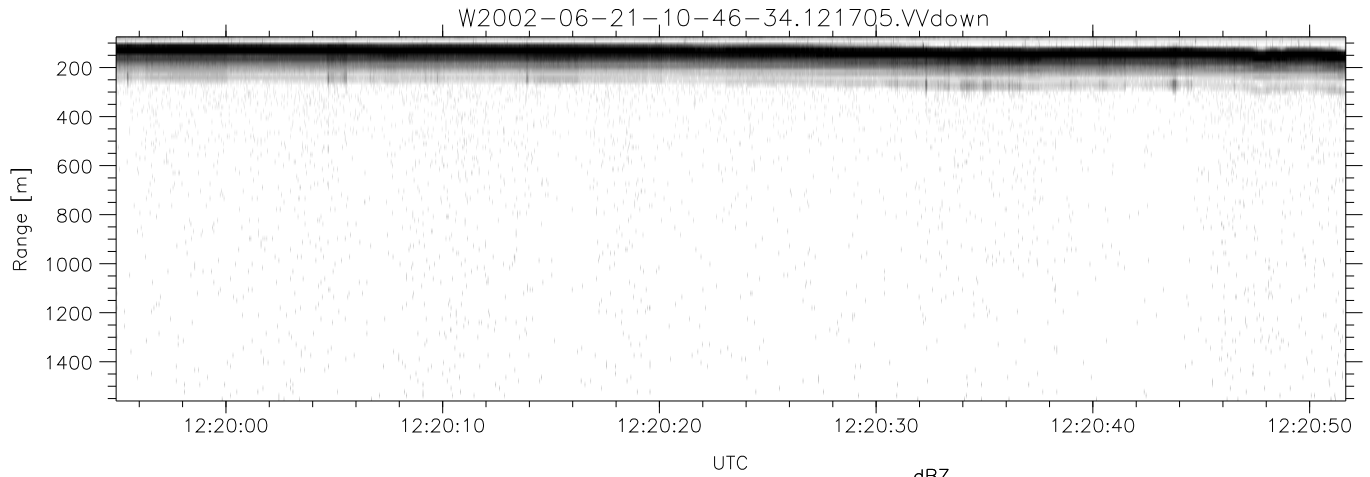


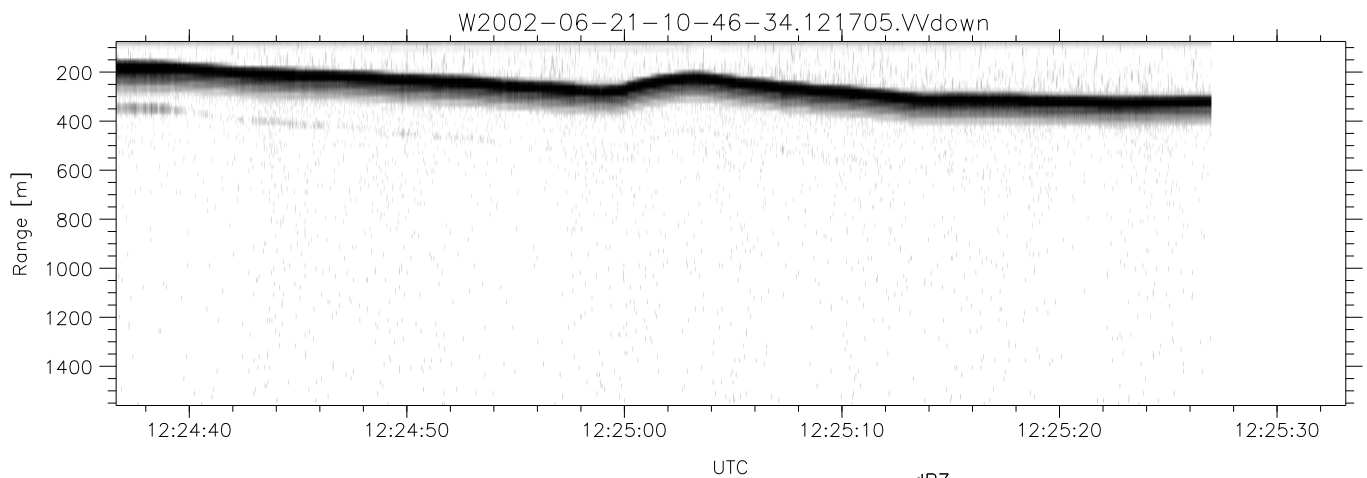
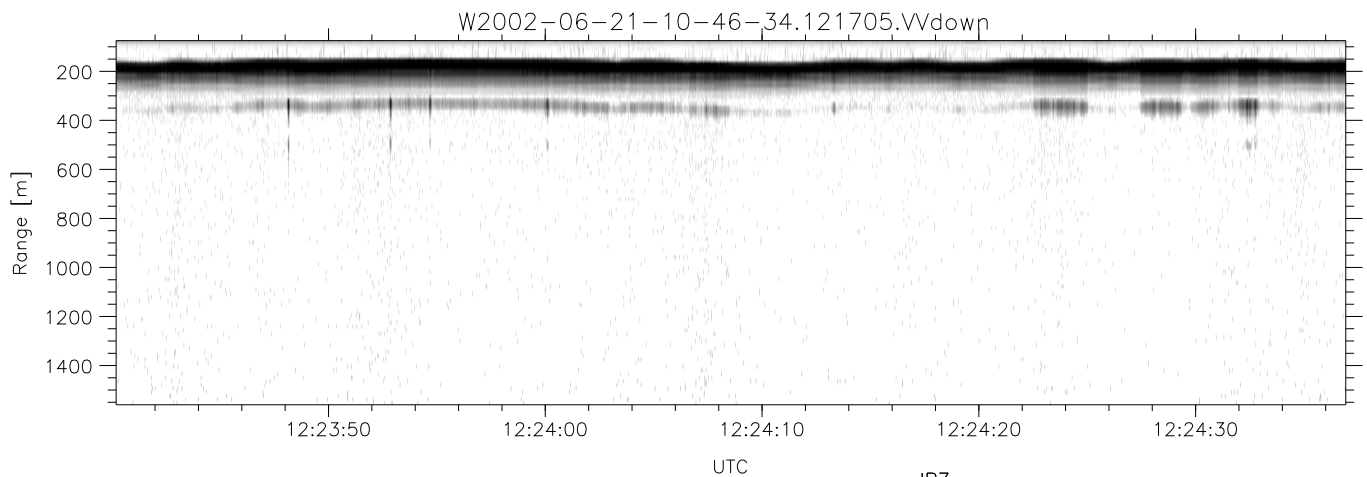
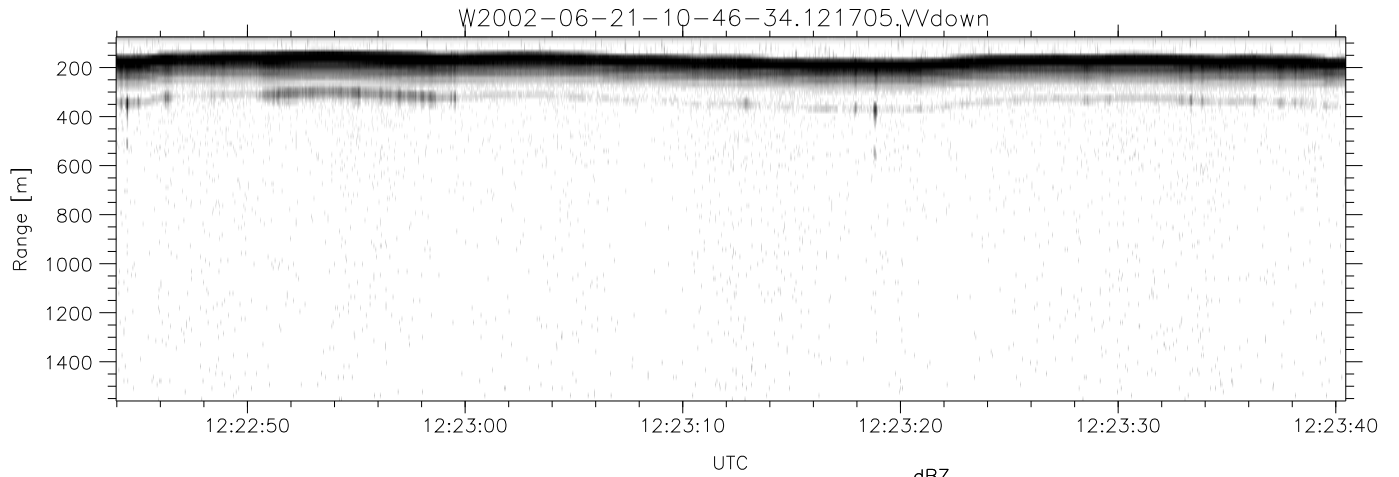
IHOP 2002 (dual-antenna config, modes 1,3,4,7) Data (cal: 49.0,50.0)

W2002-06-21-10-46-34 - PPMAG4	Min	Max	Mean	Std	Varc%	
IRIG:1,UTC: 10:46:21.22 to 13:48:33.67, Dur: 10932s	hhN(dB)	-67.22	-63.99	-65.54	-75.64	9.8
TimeLngth: 10932.44s, TimeInt: 29ms (34.3pps)	vvN(dB)	-66.26	-63.11	-64.60	-74.67	9.9
TimeCor=-13.0s, DSPDif(mn,min,mx):29,28,393	hhL(dB)	-9.39	-5.10	-7.26	-16.63	11.6
PPS(min,max,std): 22,36,2.44	vvL(dB)	-10.04	-2.75	-6.92	-12.25	29.3
Prof: 398 to 375046, NumProf(t/r): 374648/17069	ppN(m/s)	-12.27	12.22	0.02	4.14	
ProcTime/Recs: 12:17:05-12:25:26/187759-204827	ppT(m/s)	-96.90	96.50	0.19	32.70	
MxACQtime: 33ms; DRate: 191.8KB/s; Flags: 1, 0, 0	hh/vv(dB)	-NaN	65.30	33.87	49.57	3718
Pulse: 275ns, IFfilt: 5.0MHz; ppPol: HH HV VV	vh/hh(dB)	-NaN	-31.69	-35.03	-35.14	97.4
TxPol: HHVV, PRF: 20 10 20 10 kHz	hv/vv(dB)	-NaN	-22.94	-47.32	-43.46	243.
Range: Delay 75m, Spacing 15m, Gates 100	hnjmp(dB)	-2.19	2.66	0.15	-8.43	13.9
Ave. Pulses: 84, Rng/Prof Aspect@90m/s: 5.7	vnjmp(dB)	-2.46	2.34	0.16	-8.41	13.9



IHOP 2002 (dual-antenna config, modes 1,3,4,7) Data (cal: 49.0,50.0)

W2002-06-21-10-46-34 - PPMAG4	Min	Max	Mean	Std	Varc%
IRIG:1,UTC: 10:46:21.22 to 13:48:33.67, Dur: 10932s	-67.22	-63.99	-65.54	-75.64	9.8
TimeLngth: 10932.44s, TimeInt: 29ms (34.3pps)	-66.26	-63.11	-64.60	-74.67	9.9
TimeCor=-13.0s, DSPDif(mn,min,mx):29,28,393	-9.39	-5.10	-7.26	-16.63	11.6
PPS(min,max,std): 22,36,2.44	-10.04	-2.75	-6.92	-12.25	29.3
Prof: 398 to 375046, NumProf(t/r): 374648/17069	ppN(m/s)	-12.27	12.22	0.02	4.14
ProcTime/Recs: 12:17:05-12:25:26/187759-204827	ppT(m/s)	-96.90	96.50	0.19	32.70
MxACQtime: 33ms; DRate: 191.8KB/s; Flags: 1, 0, 0	hh/vv(dB)	-NaN	65.30	33.87	49.57 3718
Pulse: 275ns, IFfilt: 5.0MHz; ppPol: HH HV VV	vh/hh(dB)	-NaN	-31.69	-35.03	-35.14 97.4
TxPol: HHVV, PRF: 20 10 20 10 kHz	hv/vv(dB)	-NaN	-22.94	-47.32	-43.46 243.
Range: Delay 75m, Spacing 15m, Gates 100	hnjmp(dB)	-2.19	2.66	0.15	-8.43 13.9
Ave. Pulses: 84, Rng/Prof Aspect@90m/s: 5.7	vnjmp(dB)	-2.46	2.34	0.16	-8.41 13.9



IHOP 2002 (dual-antenna config, modes 1,3,4,7) Data (cal: 49.0,50.0)

W2002-06-21-10-46-34 - PPMAG4
 IRIG:1,UTC: 10:46:21.22 to 13:48:33.67, Dur: 10932s
 TimeLngth: 10932.44s, TimeInt: 29ms (34.3pps)
 TimeCor=-13.0s, DSPDif(mn,min,mx):29,28,393
 PPS(min,max,std): 22,36,2.44
 Prof: 398 to 375046, NumProf(t/r): 374648/17069
 ProcTime/Recs: 12:17:05-12:25:26/187759-204827
 MxACQtime: 33ms; DRate: 191.8KB/s; Flags: 1, 0, 0
 Pulse: 275ns, IFfilt: 5.0MHz; ppPol: HH HV VV
 TxPol: HHVV, PRF: 20 10 20 10 kHz
 Range: Delay 75m, Spacing 15m, Gates 100
 Ave. Pulses: 84, Rng/Prof Aspect@90m/s: 5.7

	Min	Max	Mean	Std	Varc%
hhN (dB)	-67.22	-63.99	-65.54	-75.64	9.8
vvN (dB)	-66.26	-63.11	-64.60	-74.67	9.9
hhL (dB)	-9.39	-5.10	-7.26	-16.63	11.6
vvL (dB)	-10.04	-2.75	-6.92	-12.25	29.3
ppN (m/s)	-12.27	12.22	0.02	4.14	
ppT (m/s)	-96.90	96.50	0.19	32.70	
hh/vv (dB)	-NaN	65.30	33.87	49.57	3718
vh/hh (dB)	-NaN	-31.69	-35.03	-35.14	97.4
hv/vv (dB)	-NaN	-22.94	-47.32	-43.46	243.
hnjmp (dB)	-2.19	2.66	0.15	-8.43	13.9
vnjmp (dB)	-2.46	2.34	0.16	-8.41	13.9