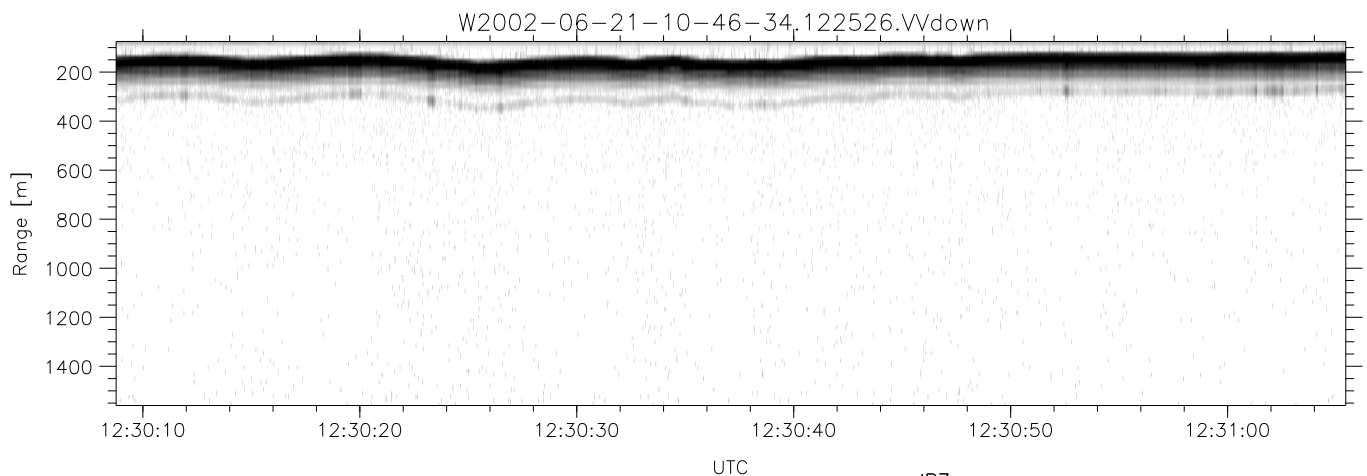
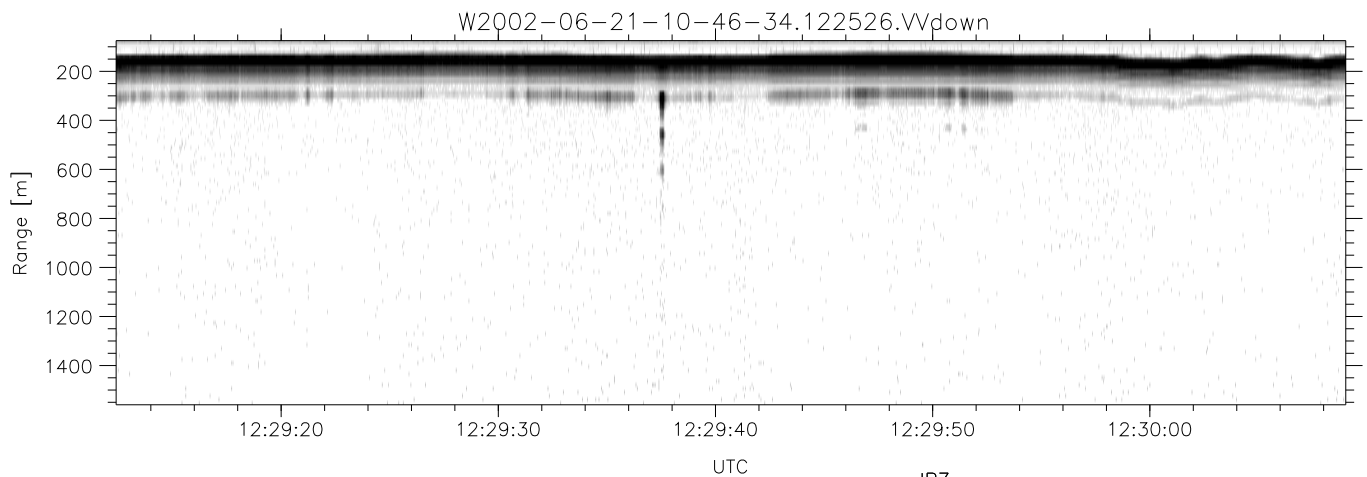
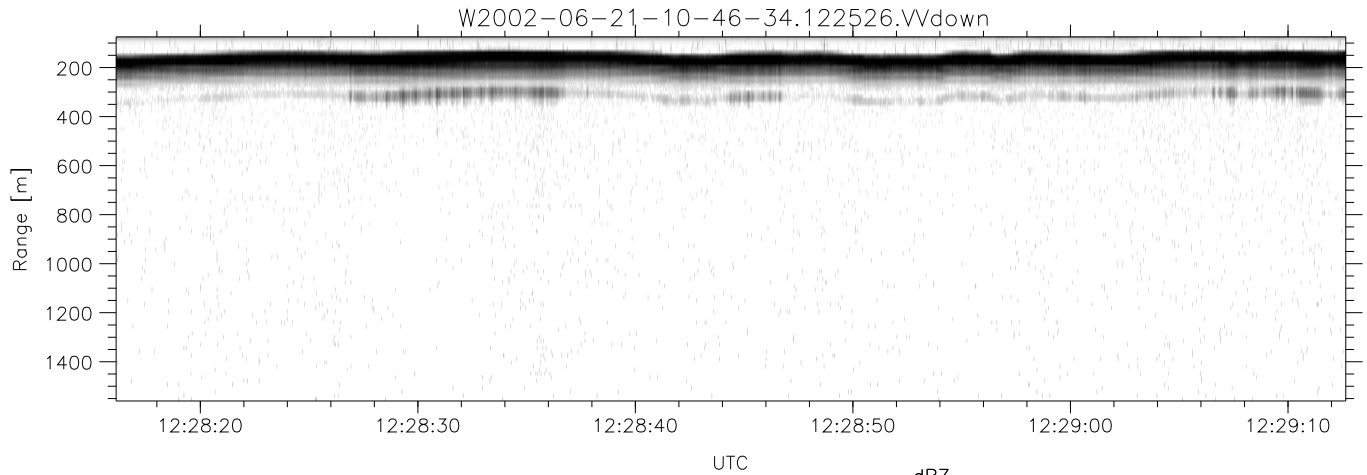


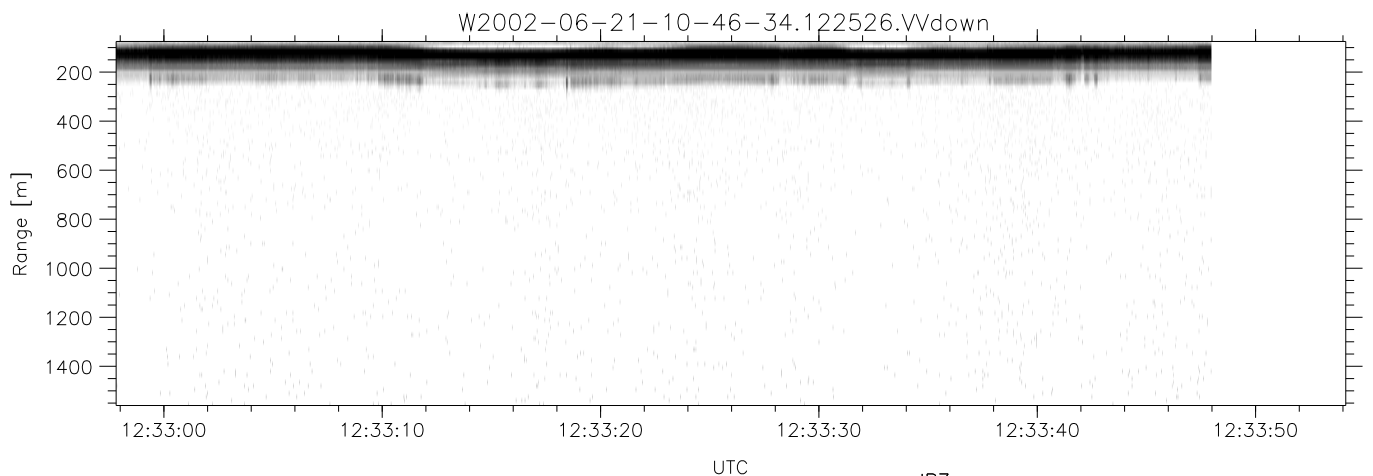
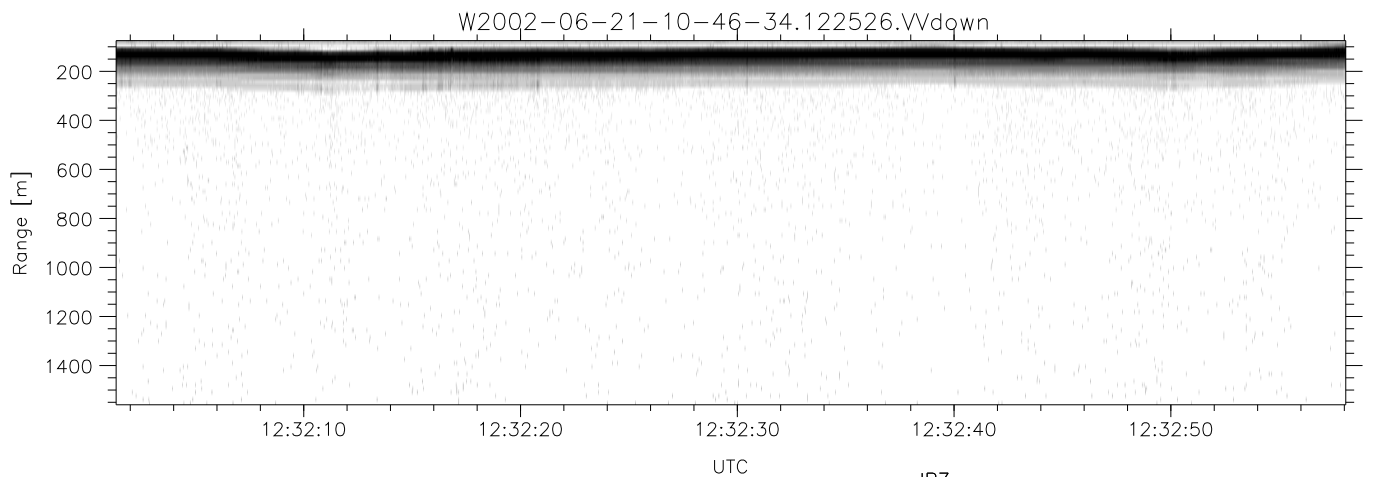
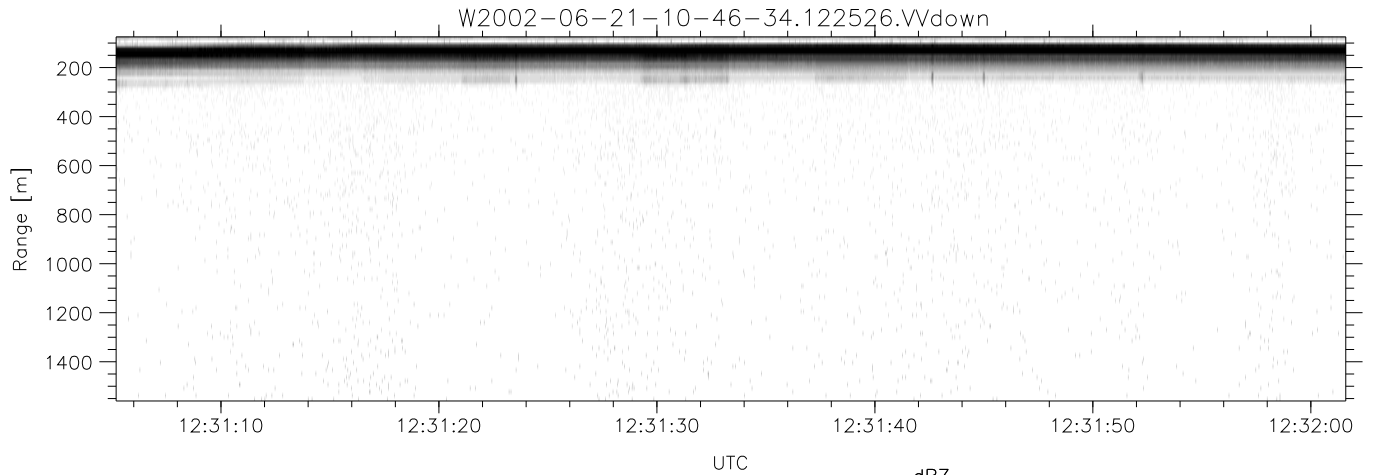
IHOP 2002 (dual-antenna config, modes 1,3,4,7) Data (cal: 49.0,50.0)

W2002-06-21-10-46-34 - PPMAG4	Min	Max	Mean	Std	Varc%	
IRIG:1,UTC: 10:46:21.22 to 13:48:33.67, Dur: 10932s	hhN(dB)	-67.24	-64.08	-65.56	-75.63	9.9
TimeLngth: 10932.44s, TimeInt: 29ms (34.3pps)	vvN(dB)	-66.34	-63.02	-64.65	-74.67	10.0
TimeCor=-13.0s, DSPDif(mn,min,mx):29,28,326	hhL(dB)	-9.23	-5.59	-7.20	-16.41	12.0
PPS(min,max,std): 23,36,2.39	vvL(dB)	-9.90	-2.46	-6.31	-10.87	35.0
Prof: 398 to 375046, NumProf(t/r): 374648/17069	ppN(m/s)	-12.52	12.92	-0.05	4.15	
ProcTime/Recs: 12:25:26-12:33:47/204828-221896	ppT(m/s)	-98.94	102.04	-0.36	32.82	
MxACQtime: 33ms; DRate: 191.8KB/s; Flags: 1, 0, 0	hh/vv(dB)	-NaN	47.40	19.42	31.82	1737
Pulse: 275ns, IFilt: 5.0MHz; ppPol: HH HV VV	vh/hh(dB)	-99.00	-99.00	-99.00	-99.00	-99.
TxPol: HHVV, PRF: 20 10 20 10 kHz	hv/vv(dB)	-NaN	-33.02	-48.13	-44.53	229.
Range: Delay 75m, Spacing 15m, Gates 100	hnjmp(dB)	-2.20	2.19	-0.08	-8.63	13.9
Ave. Pulses: 84, Rng/Prof Aspect@90m/s: 5.7	vnjmp(dB)	-2.38	2.11	-0.10	-8.60	14.1



IHOP 2002 (dual-antenna config, modes 1,3,4,7) Data (cal: 49.0,50.0)

W2002-06-21-10-46-34 - PPMAG4	Min	Max	Mean	Std	Varc%	
IRIG:1,UTC: 10:46:21.22 to 13:48:33.67, Dur: 10932s	hhN (dB)	-67.24	-64.08	-65.56	-75.63	9.9
TimeLngth: 10932.44s, TimeInt: 29ms (34.3pps)	vvN (dB)	-66.34	-63.02	-64.65	-74.67	10.0
TimeCor=-13.0s, DSPDif(mn,min,mx):29,28,326	hhL (dB)	-9.23	-5.59	-7.20	-16.41	12.0
PPS(min,max,std): 23,36,2.39	vvL (dB)	-9.90	-2.46	-6.31	-10.87	35.0
Prof: 398 to 375046, NumProf(t/r): 374648/17069	ppN (m/s)	-12.52	12.92	-0.05	4.15	
ProcTime/Recs: 12:25:26-12:33:47/204828-221896	ppT (m/s)	-98.94	102.04	-0.36	32.82	
MxACQtime: 33ms; DRate: 191.8KB/s; Flags: 1, 0, 0	hh/vv (dB)	-NaN	47.40	19.42	31.82	1737
Pulse: 275ns, IFilt: 5.0MHz; ppPol: HH HV VV	vh/hh (dB)	-99.00	-99.00	-99.00	-99.00	-99.
TxPol: HHVV, PRF: 20 10 20 10 kHz	hv/vv (dB)	-NaN	-33.02	-48.13	-44.53	229.
Range: Delay 75m, Spacing 15m, Gates 100	hn/jmp (dB)	-2.20	2.19	-0.08	-8.63	13.9
Ave. Pulses: 84, Rng/Prof Aspect@90m/s: 5.7	vn/jmp (dB)	-2.38	2.11	-0.10	-8.60	14.1



IHOP 2002 (dual-antenna config, modes 1,3,4,7) Data (cal: 49.0,50.0)

W2002-06-21-10-46-34 - PPMAG4	Min	Max	Mean	Std	Varc%	
IRIG:1,UTC: 10:46:21.22 to 13:48:33.67, Dur: 10932s	hhN(dB)	-67.24	-64.08	-65.56	-75.63	9.9
TimeLngth: 10932.44s, TimeInt: 29ms (34.3pps)	vvN(dB)	-66.34	-63.02	-64.65	-74.67	10.0
TimeCor=-13.0s, DSPDif(mn,min,mx):29,28,326	hhL(dB)	-9.23	-5.59	-7.20	-16.41	12.0
PPS(min,max,std): 23,36,2.39	vvL(dB)	-9.90	-2.46	-6.31	-10.87	35.0
Prof: 398 to 375046, NumProf(t/r): 374648/17069	ppN(m/s)	-12.52	12.92	-0.05	4.15	
ProcTime/Recs: 12:25:26-12:33:47/204828-221896	ppT(m/s)	-98.94	102.04	-0.36	32.82	
MxACQtime: 33ms; DRate: 191.8KB/s; Flags: 1, 0, 0	hh/vv(dB)	-NaN	47.40	19.42	31.82	1737
Pulse: 275ns, IFfilt: 5.0MHz; ppPol: HH HV VV	vh/hh(dB)	-99.00	-99.00	-99.00	-99.00	-99.
TxPol: HHVV, PRF: 20 10 20 10 kHz	hv/vv(dB)	-NaN	-33.02	-48.13	-44.53	229.
Range: Delay 75m, Spacing 15m, Gates 100	hn/jmp(dB)	-2.20	2.19	-0.08	-8.63	13.9
Ave. Pulses: 84, Rng/Prof Aspect@90m/s: 5.7	vn/jmp(dB)	-2.38	2.11	-0.10	-8.60	14.1