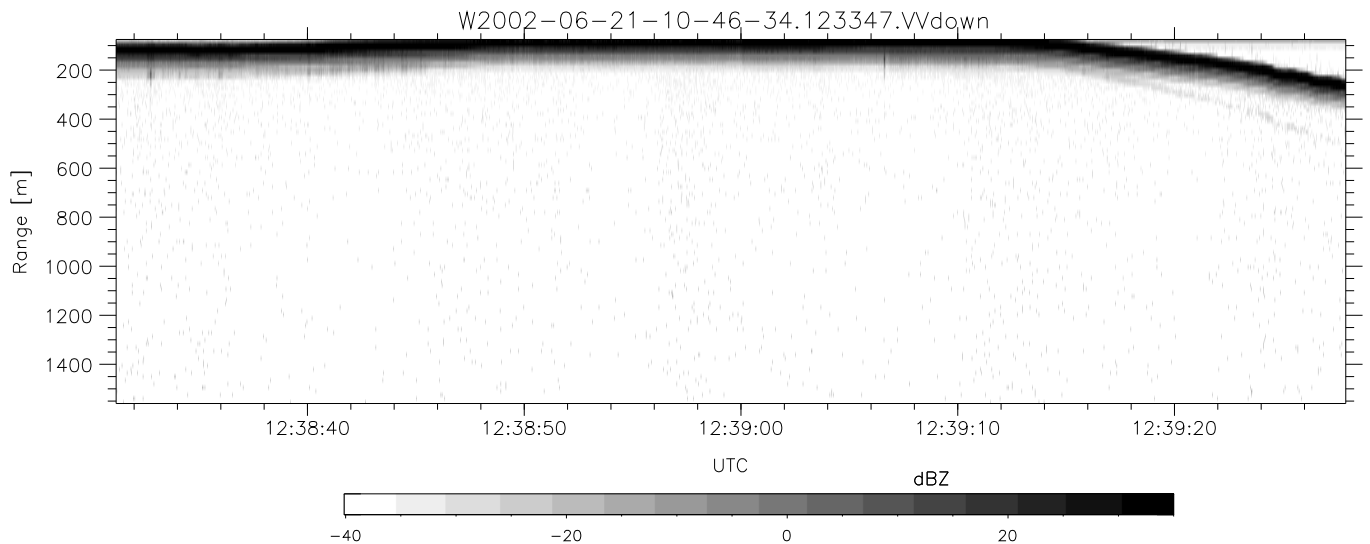
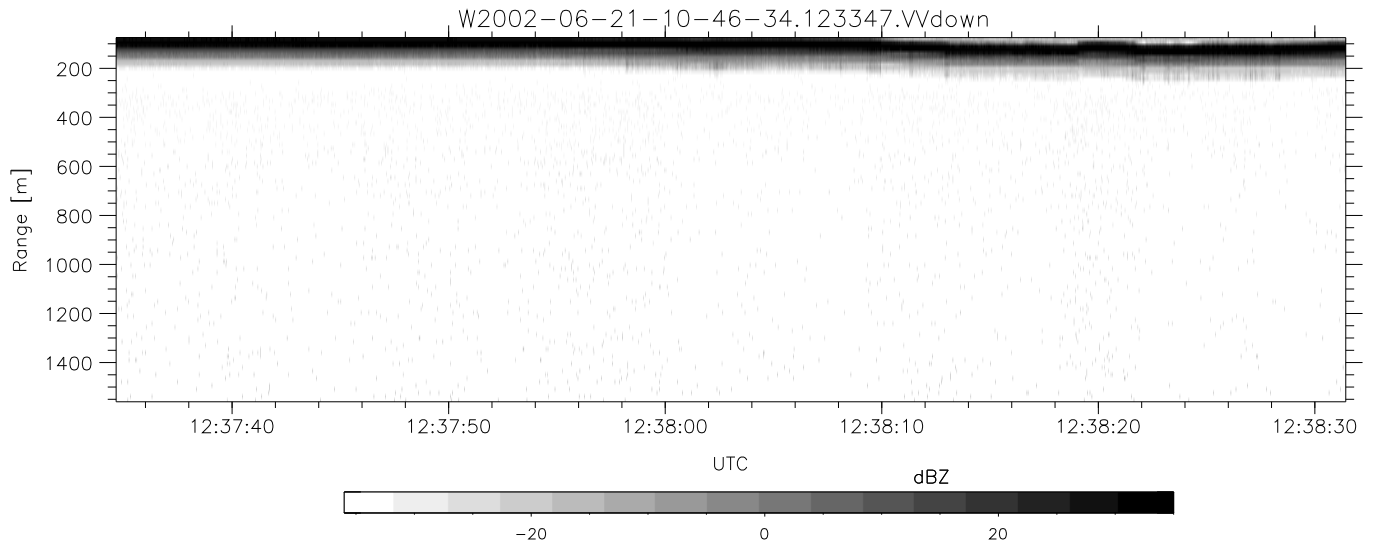
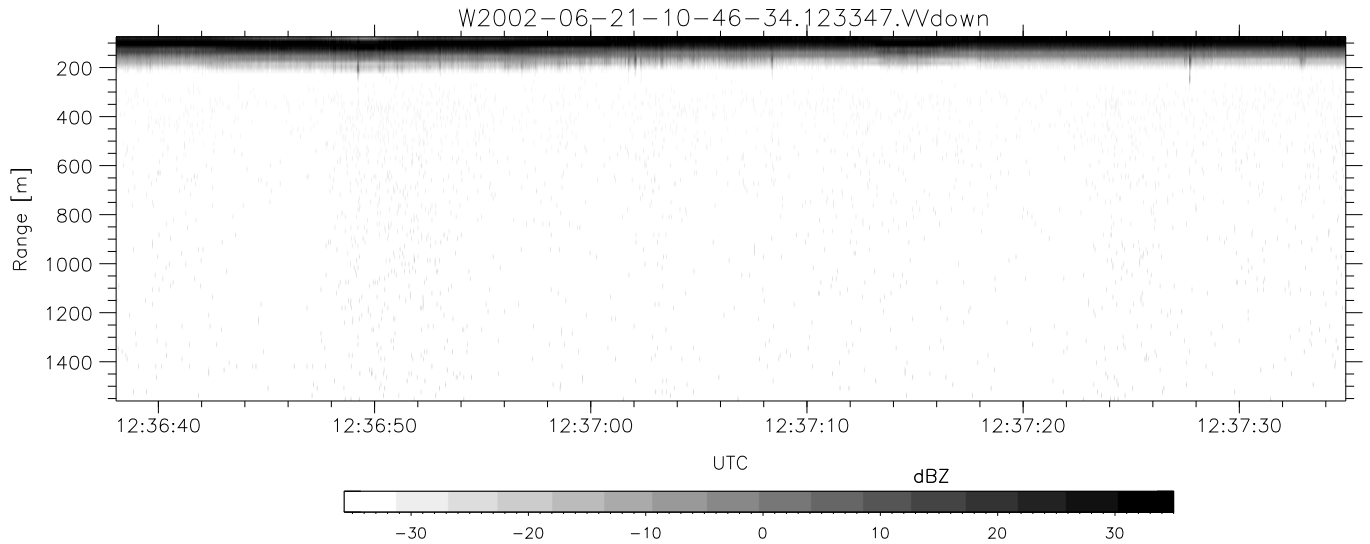


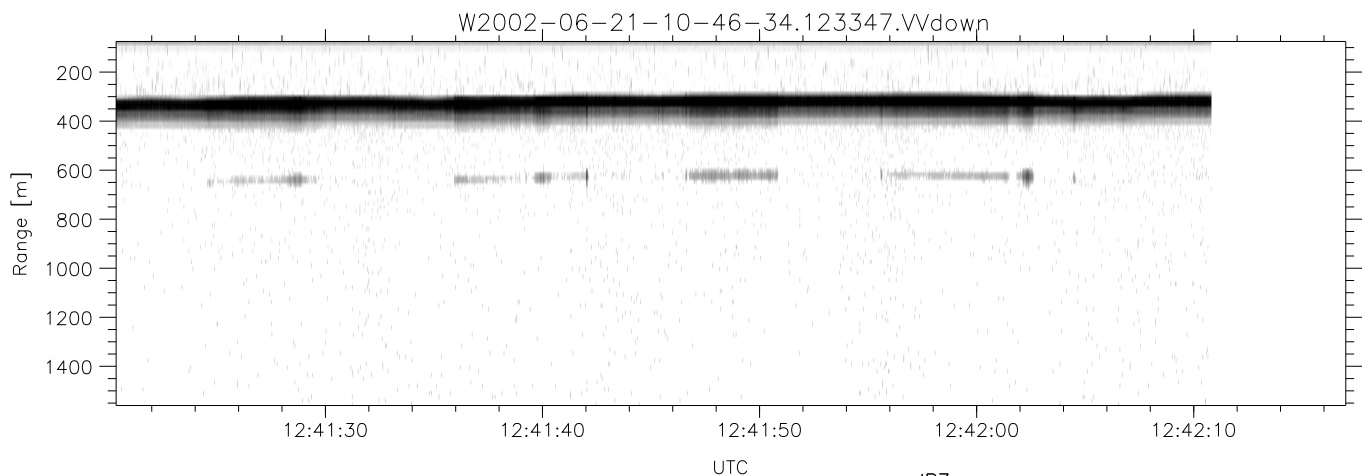
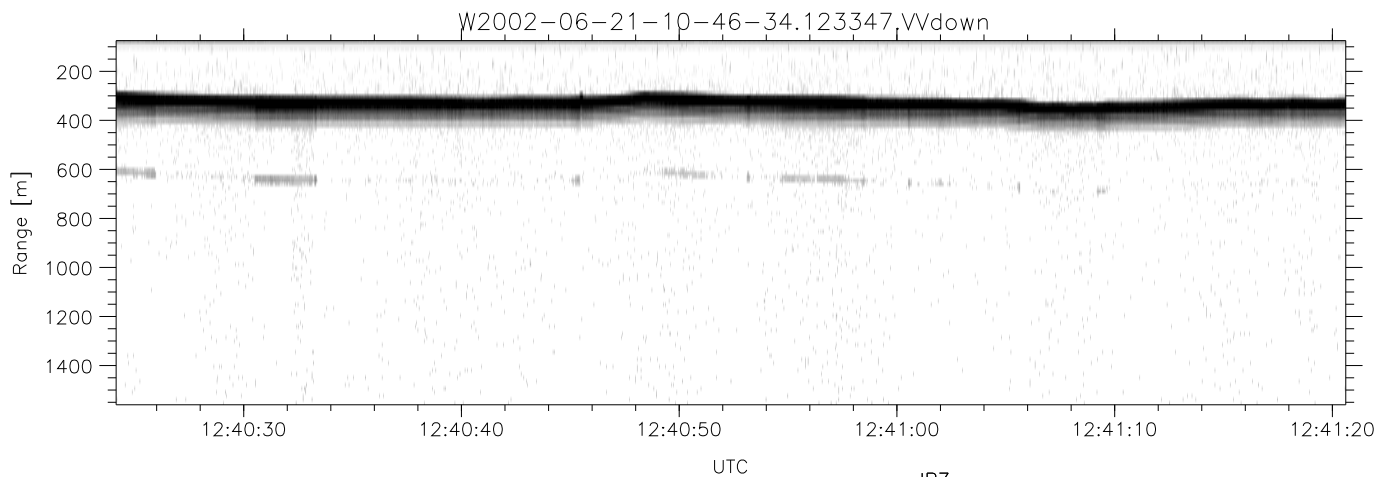
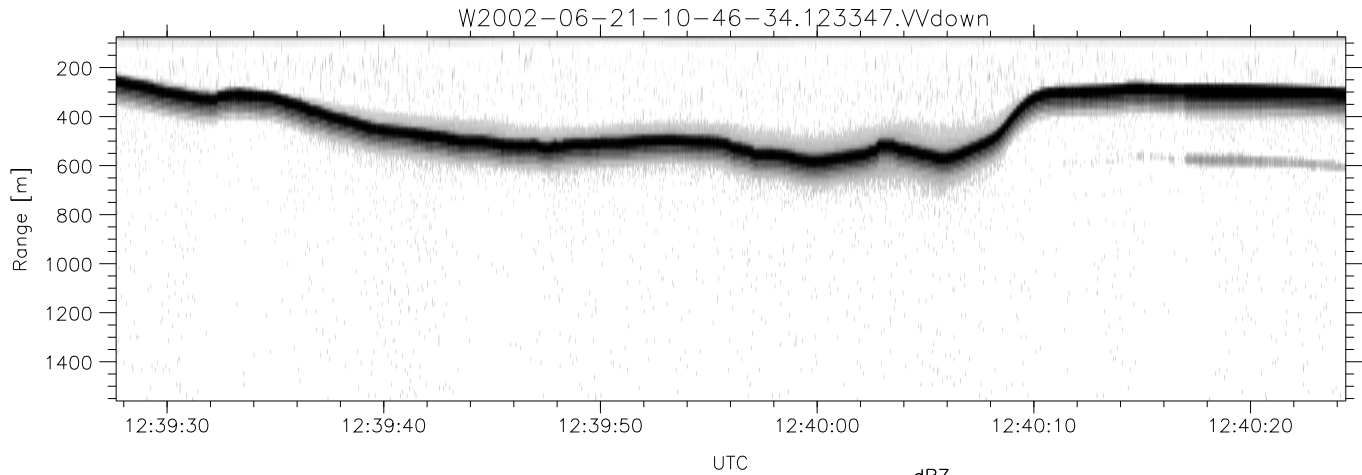
IHOP 2002 (dual-antenna config, modes 1,3,4,7) Data (cal: 49.0,50.0)

W2002-06-21-10-46-34 - PPMAG4	Min	Max	Mean	Std	Varc%	
IRIG:1,UTC: 10:46:21.22 to 13:48:33.67, Dur: 10932s	hhN(dB)	-67.67	-63.94	-65.61	-75.70	9.8
TimeLngth: 10932.44s, TimeInt: 29ms (34.3pps)	vvN(dB)	-66.80	-62.79	-64.66	-74.67	10.0
TimeCor=-13.0s, DSPDif(mn,min,mx):29,28,464	hhL(dB)	-9.54	-3.77	-6.63	-12.44	26.2
PPS(min,max,std): 17,36,2.76	vvL(dB)	-9.94	-2.33	-5.40	-9.80	36.4
Prof: 398 to 375046, NumProf(t/r): 374648/17069	ppN(m/s)	-12.54	11.94	-0.06	4.16	
ProcTime/Recs: 12:33:47-12:42:10/221897-238965	ppT(m/s)	-99.07	94.30	-0.44	32.88	
MxAcQtime: 33ms; DRate: 191.8KB/s; Flags: 1, 0, 0	hh/vv(dB)	-NaN	40.74	18.70	28.40	933.
Pulse: 275ns, IFfilt: 5.0MHz; ppPol: HH HV VV	vh/hh(dB)	-NaN	-19.87	-26.52	-23.45	203.
TxPol: HHVV, PRF: 20 10 20 10 kHz	hv/vv(dB)	-NaN	-19.71	-40.90	-38.22	185.
Range: Delay 75m, Spacing 15m, Gates 100	hn_jmp(dB)	-2.10	2.27	0.15	-8.47	13.7
Ave. Pulses: 84, Rng/Prof Aspect@90m/s: 5.7	vn_jmp(dB)	-2.34	2.41	0.16	-8.36	14.0



IHOP 2002 (dual-antenna config, modes 1,3,4,7) Data (cal: 49.0,50.0)

W2002-06-21-10-46-34 - PPMAG4	Min	Max	Mean	Std	Varc%
IRIG:1,UTC: 10:46:21.22 to 13:48:33.67, Dur: 10932s	-67.67	-63.94	-65.61	-75.70	9.8
TimeLngth: 10932.44s, TimeInt: 29ms (34.3pps)	-66.80	-62.79	-64.66	-74.67	10.0
TimeCor=-13.0s, DSPDif(mn,min,mx):29,28,464	-9.54	-3.77	-6.63	-12.44	26.2
PPS(min,max,std): 17,36,2.76	-9.94	-2.33	-5.40	-9.80	36.4
Prof: 398 to 375046, NumProf(t/r): 374648/17069	ppN(m/s)	-12.54	11.94	-0.06	4.16
ProcTime/Recs: 12:33:47-12:42:10/221897-238965	ppT(m/s)	-99.07	94.30	-0.44	32.88
MxACQtime: 33ms; DRate: 191.8KB/s; Flags: 1, 0, 0	hh/vv(dB)	-NaN	40.74	18.70	28.40 933.
Pulse: 275ns, IFilt: 5.0MHz; ppPol: HH HV VV	vh/hh(dB)	-NaN	-19.87	-26.52	-23.45 203.
TxPol: HHVV, PRF: 20 10 20 10 kHz	hv/vv(dB)	-NaN	-19.71	-40.90	-38.22 185.
Range: Delay 75m, Spacing 15m, Gates 100	hn/jmp(dB)	-2.10	2.27	0.15	-8.47 13.7
Ave. Pulses: 84, Rng/Prof Aspect@90m/s: 5.7	vn/jmp(dB)	-2.34	2.41	0.16	-8.36 14.0



IHOP 2002 (dual-antenna config, modes 1,3,4,7) Data (cal: 49.0,50.0)

W2002-06-21-10-46-34 - PPMAG4
 IRIG:1,UTC: 10:46:21.22 to 13:48:33.67, Dur: 10932s
 TimeLngth: 10932.44s, TimeInt: 29ms (34.3pps)
 TimeCor=-13.0s, DSPDif(mn,min,mx):29,28,464
 PPS(min,max,std): 17,36,2.76
 Prof: 398 to 375046, NumProf(t/r): 374648/17069
 ProcTime/Recs: 12:33:47-12:42:10/221897-238965
 MxACQtime: 33ms; DRate: 191.8KB/s; Flags: 1, 0, 0
 Pulse: 275ns, IFfilt: 5.0MHz; ppPol: HH HV VV
 TxPol: HHVV, PRF: 20 10 20 10 kHz
 Range: Delay 75m, Spacing 15m, Gates 100
 Ave. Pulses: 84, Rng/Prof Aspect@90m/s: 5.7

	Min	Max	Mean	Std	Varc%
hhN(dB)	-67.67	-63.94	-65.61	-75.70	9.8
vvN(dB)	-66.80	-62.79	-64.66	-74.67	10.0
hhL(dB)	-9.54	-3.77	-6.63	-12.44	26.2
vvL(dB)	-9.94	-2.33	-5.40	-9.80	36.4
ppN(m/s)	-12.54	11.94	-0.06	4.16	
ppT(m/s)	-99.07	94.30	-0.44	32.88	
hh/vv(dB)	-NaN	40.74	18.70	28.40	933.
vh/hh(dB)	-NaN	-19.87	-26.52	-23.45	203.
hv/vv(dB)	-NaN	-19.71	-40.90	-38.22	185.
hnjmp(dB)	-2.10	2.27	0.15	-8.47	13.7
vnjmp(dB)	-2.34	2.41	0.16	-8.36	14.0