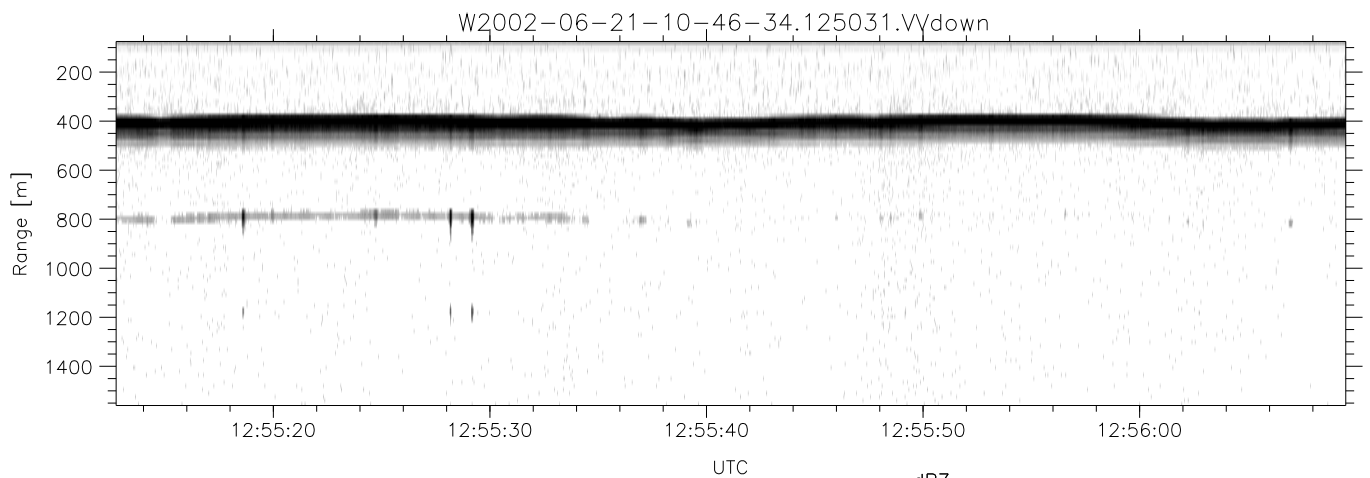
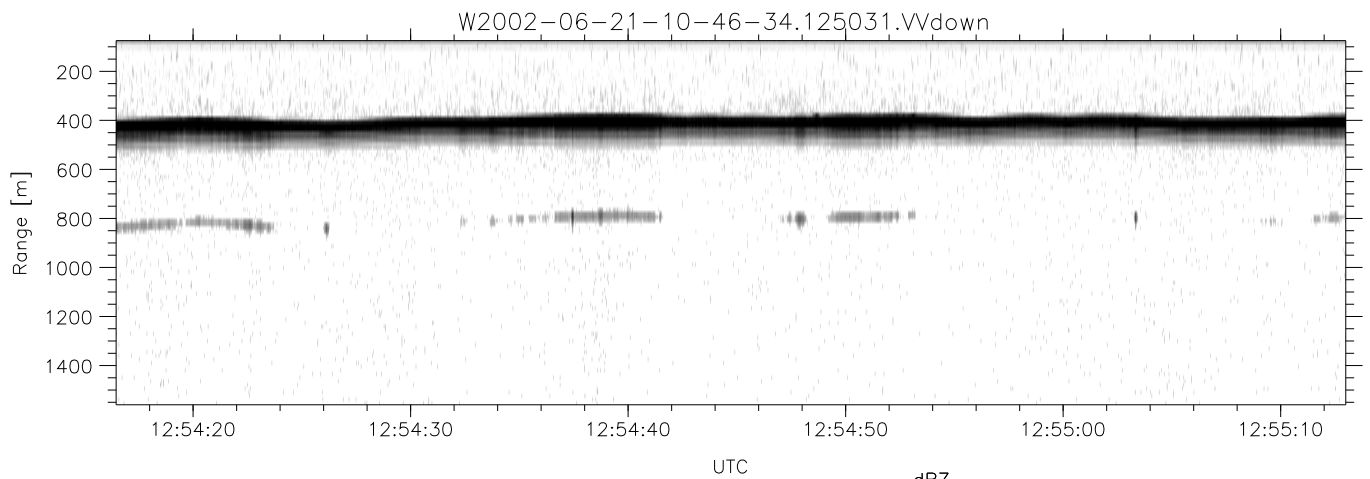
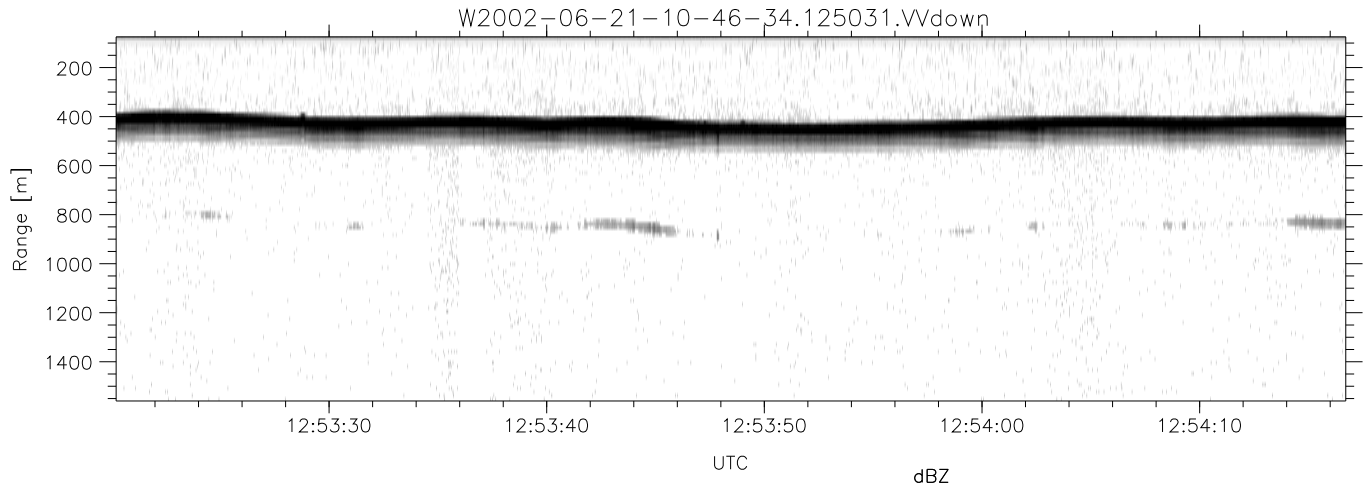


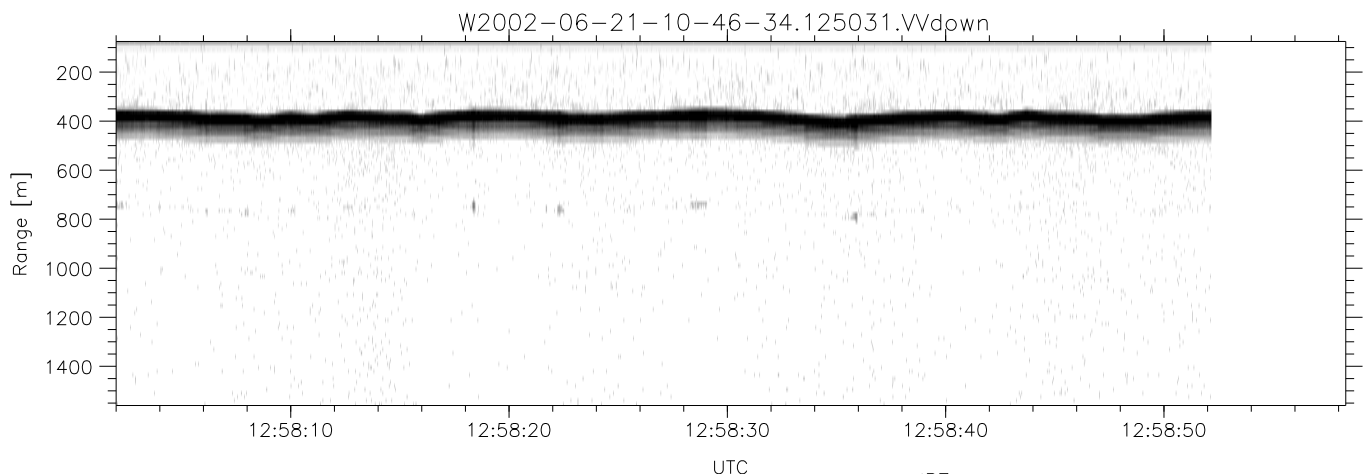
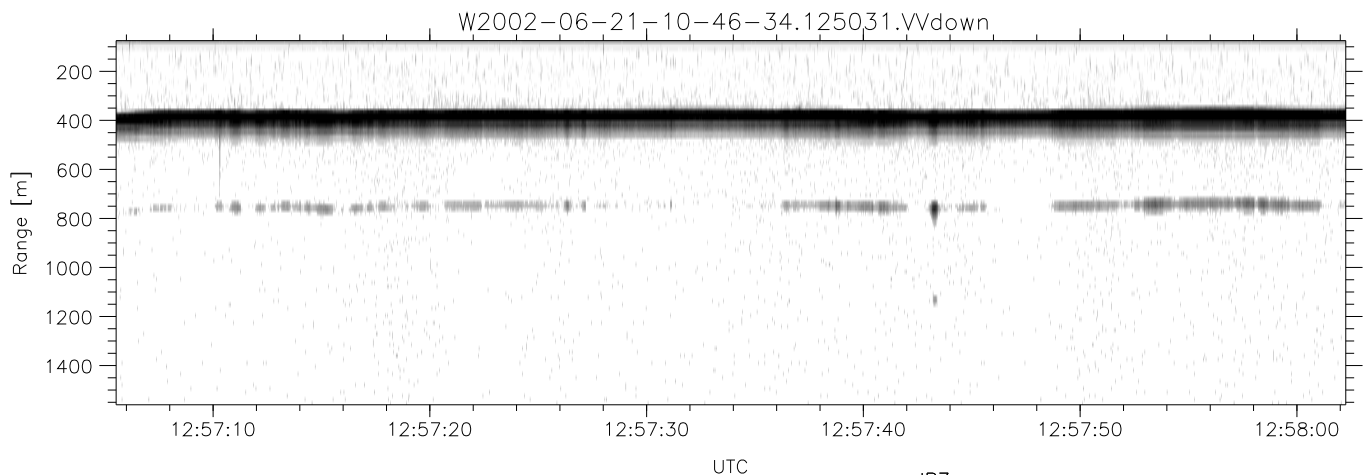
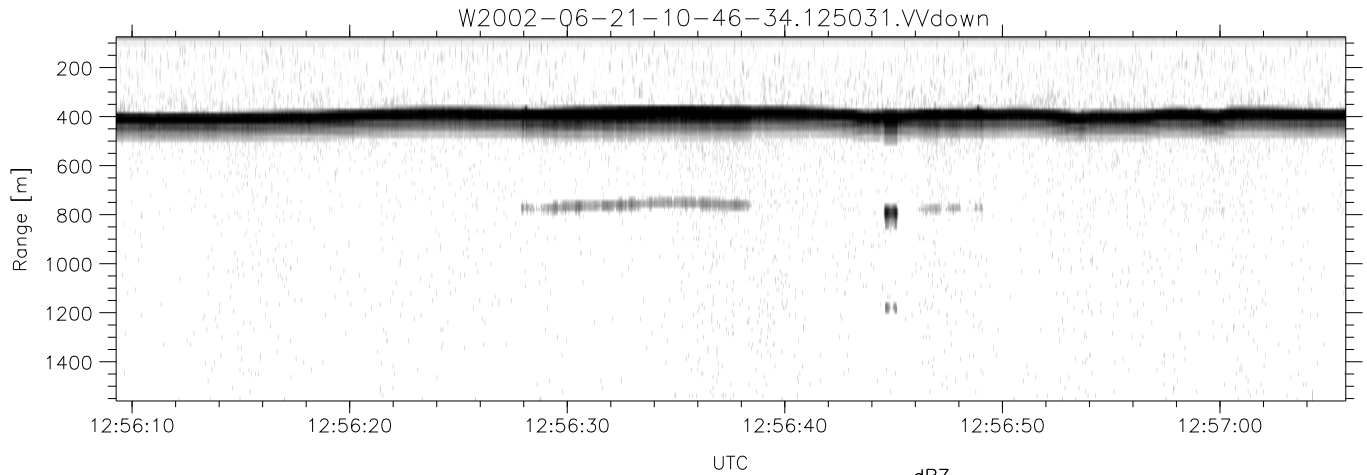
IHOP 2002 (dual-antenna config, modes 1,3,4,7) Data (cal: 49.0,50.0)

W2002-06-21-10-46-34 - PPMAG4	Min	Max	Mean	Std	Varc%	
IRIG:1,UTC: 10:46:21.22 to 13:48:33.67, Dur: 10932s	hhN (dB)	-67.84	-64.11	-65.62	-75.59	10.1
TimeLngth: 10932.44s, TimeInt: 29ms (34.3pps)	vvN (dB)	-66.50	-63.18	-64.72	-74.74	10.0
TimeCor=-13.0s, DSPDif(mn,min,mx):29,28,358	hhL (dB)	-6.97	-3.43	-4.90	-14.67	10.5
PPS(min,max,std): 24,36,2.30	vvL (dB)	-6.92	-2.98	-4.61	-14.19	11.0
Prof: 398 to 375046, NumProf(t/r): 374648/17069	ppN (m/s)	-12.69	12.66	0.06	4.11	
ProcTime/Recs: 12:50:31-12:58:52/256035-273103	ppT (m/s)	-100.2	100.05	0.45	32.47	
MxACQtime: 33ms; DRate: 191.8KB/s; Flags: 1, 0, 0	hh/vv (dB)	-NaN	45.49	-NaN	38.03	-225
Pulse: 275ns, IFilt: 5.0MHz; ppPol: HH HV VV	vh/hh (dB)	-44.80	-31.18	-34.21	-35.24	78.8
TxPol: HHVV, PRF: 20 10 20 10 kHz	hv/vv (dB)	-NaN	-34.57	-53.99	-46.13	611.
Range: Delay 75m, Spacing 15m, Gates 100	hnjmp (dB)	-2.15	2.46	0.16	-8.41	13.9
Ave. Pulses: 84, Rng/Prof Aspect@90m/s: 5.7	vnjmp (dB)	-2.44	2.31	0.19	-8.41	13.8



IHOP 2002 (dual-antenna config, modes 1,3,4,7) Data (cal: 49.0,50.0)

W2002-06-21-10-46-34 - PPMAG4	Min	Max	Mean	Std	Varc%
IRIG:1,UTC: 10:46:21.22 to 13:48:33.67, Dur: 10932s	-67.84	-64.11	-65.62	-75.59	10.1
TimeLngth: 10932.44s, TimeInt: 29ms (34.3pps)	-66.50	-63.18	-64.72	-74.74	10.0
TimeCor=-13.0s, DSPDif(mn,min,mx):29,28,358	-6.97	-3.43	-4.90	-14.67	10.5
PPS(min,max,std): 24,36,2.30	-6.92	-2.98	-4.61	-14.19	11.0
Prof: 398 to 375046, NumProf(t/r): 374648/17069	ppN(m/s)	-12.69	12.66	0.06	4.11
ProcTime/Recs: 12:50:31-12:58:52/256035-273103	ppT(m/s)	-100.2	100.05	0.45	32.47
MxAcQtime: 33ms; DRate: 191.8KB/s; Flags: 1, 0, 0	hh/vv(dB)	-NaN	45.49	-NaN	38.03 -225
Pulse: 275ns, IFilt: 5.0MHz; ppPol: HH HV VV	vh/hh(dB)	-44.80	-31.18	-34.21	-35.24 78.8
TxPol: HHVV, PRF: 20 10 20 10 kHz	hv/vv(dB)	-NaN	-34.57	-53.99	-46.13 611.
Range: Delay 75m, Spacing 15m, Gates 100	hnjmp(dB)	-2.15	2.46	0.16	-8.41 13.9
Ave. Pulses: 84, Rng/Prof Aspect@90m/s: 5.7	vnjmp(dB)	-2.44	2.31	0.19	-8.41 13.8



IHOP 2002 (dual-antenna config, modes 1,3,4,7) Data (cal: 49.0,50.0)

W2002-06-21-10-46-34 - PPMAG4
 IRIG:1,UTC: 10:46:21.22 to 13:48:33.67, Dur: 10932s
 TimeLngth: 10932.44s, TimeInt: 29ms (34.3pps)
 TimeCor=-13.0s, DSPDif(mn,min,mx):29,28,358
 PPS(min,max,std): 24,36,2.30
 Prof: 398 to 375046, NumProf(t/r): 374648/17069
 ProcTime/Recs: 12:50:31-12:58:52/256035-273103
 MxACQtime: 33ms; DRate: 191.8KB/s; Flags: 1, 0, 0
 Pulse: 275ns, IFfilt: 5.0MHz; ppPol: HH HV VV
 TxPol: HHVV, PRF: 20 10 20 10 kHz
 Range: Delay 75m, Spacing 15m, Gates 100
 Ave. Pulses: 84, Rng/Prof Aspect@90m/s: 5.7

	Min	Max	Mean	Std	Varc%
hhN(dB)	-67.84	-64.11	-65.62	-75.59	10.1
vvN(dB)	-66.50	-63.18	-64.72	-74.74	10.0
hhL(dB)	-6.97	-3.43	-4.90	-14.67	10.5
vvL(dB)	-6.92	-2.98	-4.61	-14.19	11.0
ppN(m/s)	-12.69	12.66	0.06	4.11	
ppT(m/s)	-100.2	100.05	0.45	32.47	
hh/vv(dB)	-NaN	45.49	-NaN	38.03	-225
vh/hh(dB)	-44.80	-31.18	-34.21	-35.24	78.8
hv/vv(dB)	-NaN	-34.57	-53.99	-46.13	611.
hnjmp(dB)	-2.15	2.46	0.16	-8.41	13.9
vnjmp(dB)	-2.44	2.31	0.19	-8.41	13.8