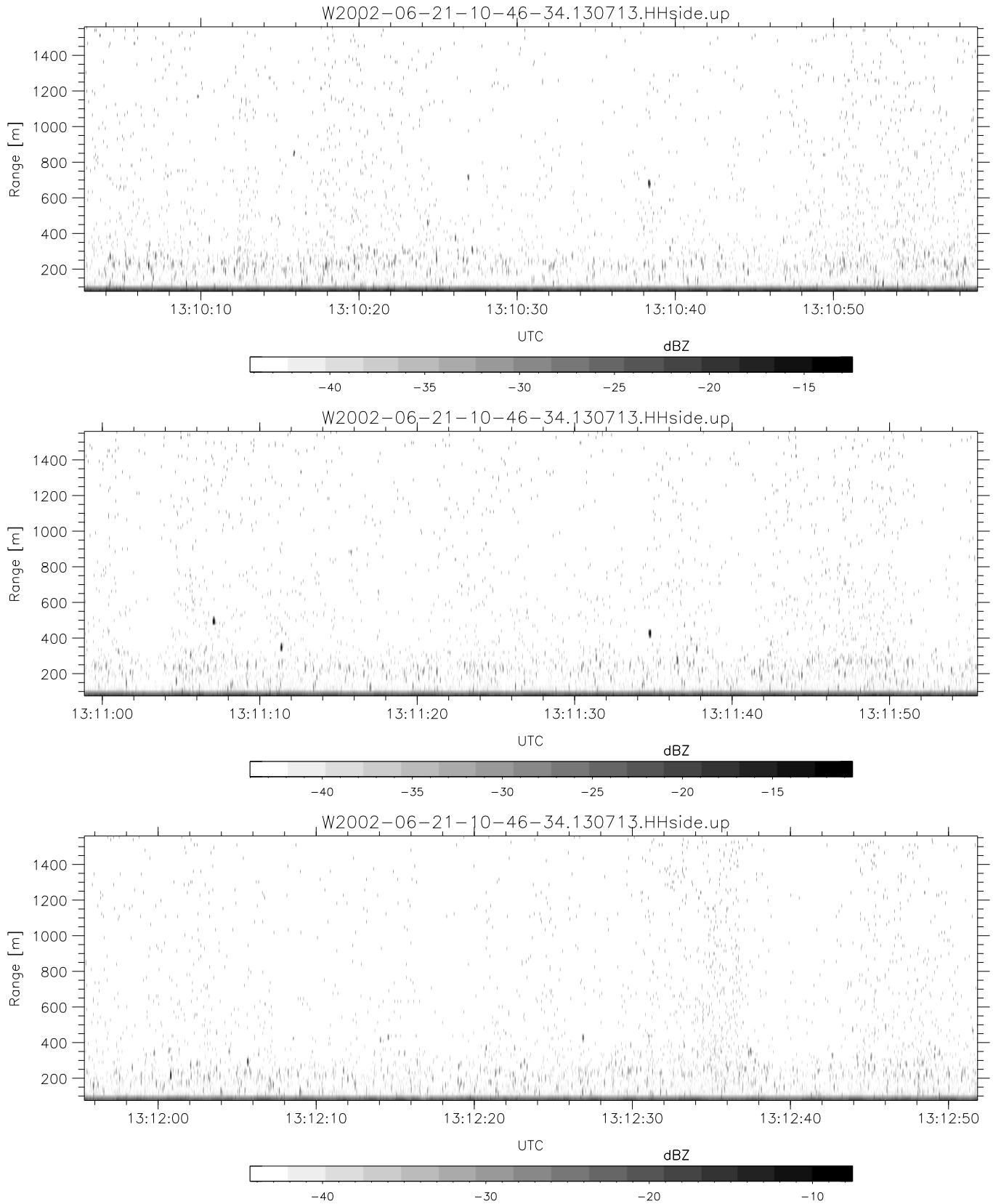


IHOP 2002 (dual-antenna config, modes 1,3,4,7) Data (cal: 49.0,50.0)

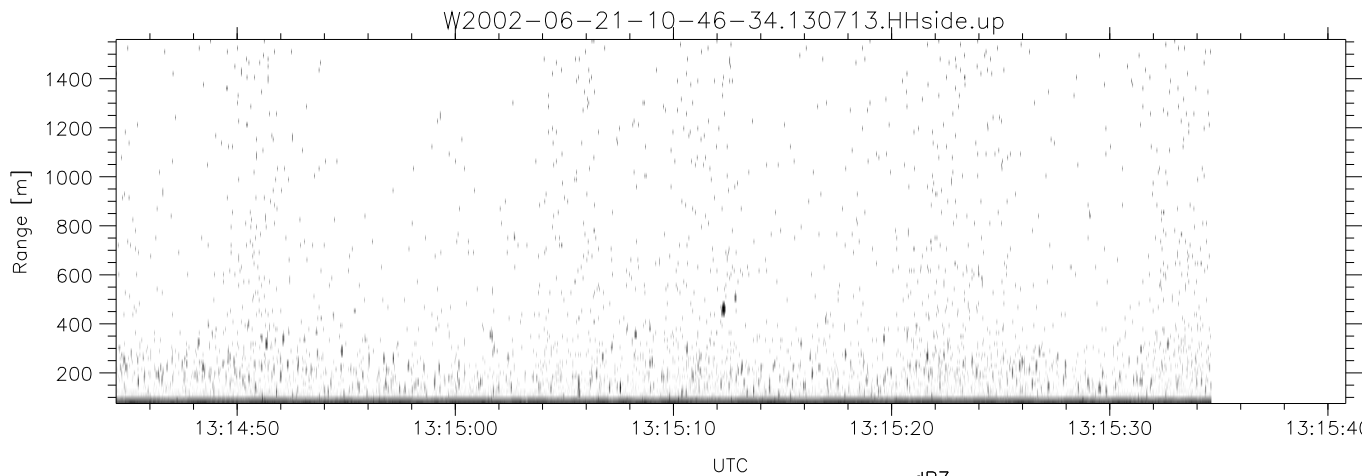
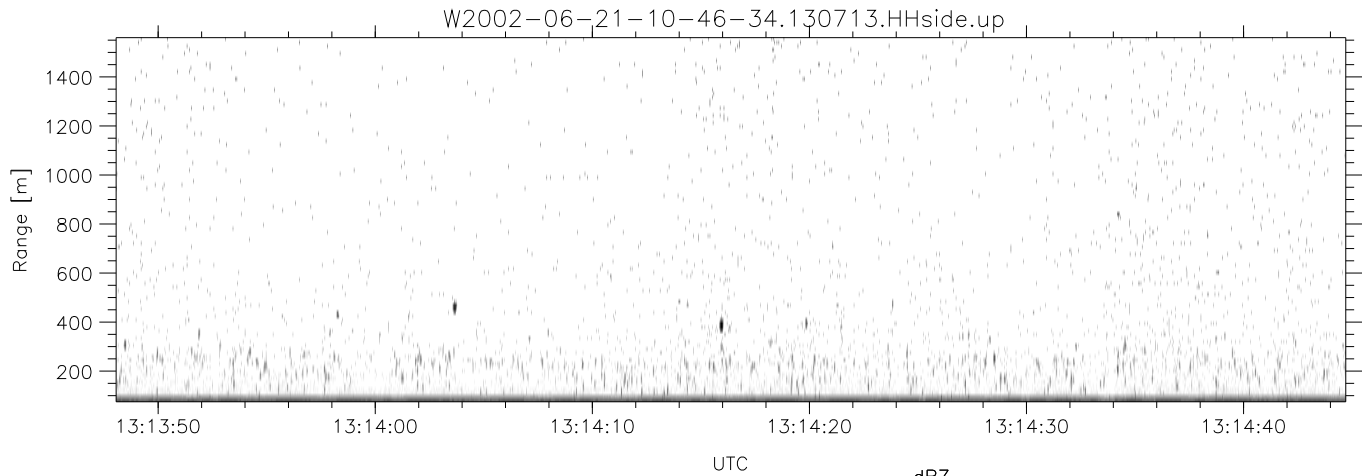
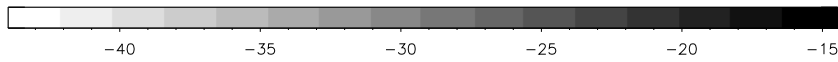
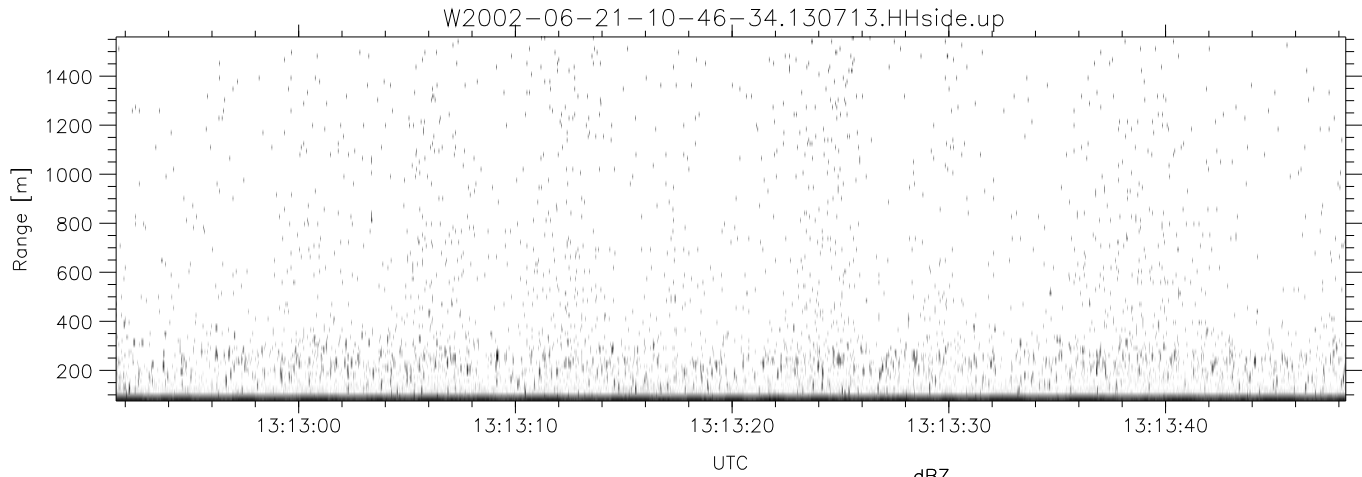
W2002-06-21-10-46-34 - PPMAG4  
 IRIG:1,UTC: 10:46:21.22 to 13:48:33.67, Dur: 10932s  
 TimeLngth: 10932.44s, TimeInt: 29ms (34.3pps)  
 TimeCor=-13.0s, DSPDif(mn,min,mx):29,28,384  
 PPS(min,max,std): 23,36,2.40  
 Prof: 398 to 375046, NumProf(t/r): 374648/17069  
 ProcTime/Recs: 13:07:13-13:15:34/290173-307241  
 MxACQtime: 33ms; DRate: 191.8KB/s; Flags: 1, 0, 0  
 Pulse: 275ns, IFfilt: 5.0MHz; ppPol: HH HV VV  
 TxPol: HHVV, PRF: 20 10 20 10 kHz  
 Range: Delay 75m, Spacing 15m, Gates 100  
 Ave. Pulses: 84, Rng/Prof Aspect@90m/s: 5.7

	Min	Max	Mean	Std	Varc%
hhN(dB)	-68.03	-64.43	-66.03	-76.02	10.0
vvN(dB)	-67.19	-63.14	-64.96	-74.92	10.1
hhL(dB)	-19.18	-2.62	-6.70	-11.77	31.1
vvL(dB)	-11.58	-1.79	-5.20	-10.02	32.9
ppN(m/s)	-12.34	12.36	-0.04	4.14	
ppT(m/s)	-97.48	97.64	-0.30	32.70	
hh/vv(dB)	-NaN	41.13	17.56	27.92	1088
vh/hh(dB)	-99.00	-99.00	-99.00	-99.00	-99.
hv/vv(dB)	-NaN	-19.09	-42.08	-38.77	214.
hnjmp(dB)	-2.01	2.73	0.18	-8.33	14.1
vnjmp(dB)	-2.06	2.64	0.18	-8.36	14.0



IHOP 2002 (dual-antenna config, modes 1,3,4,7) Data (cal: 49.0,50.0)

W2002-06-21-10-46-34 - PPMAG4						
IRIG:1,UTC: 10:46:21.22 to 13:48:33.67, Dur: 10932s	hhN (dB)	-68.03	-64.43	-66.03	-76.02	10.0
TimeLngth: 10932.44s, TimeInt: 29ms (34.3pps)	vvN (dB)	-67.19	-63.14	-64.96	-74.92	10.1
TimeCor=-13.0s, DSPDif(mn,min,mx):29,28,384	hhL (dB)	-19.18	-2.62	-6.70	-11.77	31.1
PPS(min,max,std): 23,36,2.40	vvL (dB)	-11.58	-1.79	-5.20	-10.02	32.9
Prof: 398 to 375046, NumProf(t/r): 374648/17069	ppN (m/s)	-12.34	12.36	-0.04	4.14	
ProcTime/Recs: 13:07:13-13:15:34/290173-307241	ppT (m/s)	-97.48	97.64	-0.30	32.70	
MxACQtime: 33ms; DRate: 191.8KB/s; Flags: 1, 0, 0	hh/vv (dB)	-NaN	41.13	17.56	27.92	1088
Pulse: 275ns, IFilt: 5.0MHz; ppPol: HH HV VV	vh/hh (dB)	-99.00	-99.00	-99.00	-99.00	-99.
TxPol: HHVV, PRF: 20 10 20 10 kHz	hv/vv (dB)	-NaN	-19.09	-42.08	-38.77	214.
Range: Delay 75m, Spacing 15m, Gates 100	hn_jmp (dB)	-2.01	2.73	0.18	-8.33	14.1
Ave. Pulses: 84, Rng/Prof Aspect@90m/s: 5.7	vn_jmp (dB)	-2.06	2.64	0.18	-8.36	14.0



IHOP 2002 (dual-antenna config, modes 1,3,4,7) Data (cal: 49.0,50.0)

W2002-06-21-10-46-34 - PPMAG4  
 IRIG:1,UTC: 10:46:21.22 to 13:48:33.67, Dur: 10932s  
 TimeLngth: 10932.44s, TimeInt: 29ms (34.3pps)  
 TimeCor=-13.0s, DSPDif(mn,min,mx):29,28,384  
 PPS(min,max,std): 23,36,2.40  
 Prof: 398 to 375046, NumProf(t/r): 374648/17069  
 ProcTime/Recs: 13:07:13-13:15:34/290173-307241  
 MxACQtime: 33ms; DRate: 191.8KB/s; Flags: 1, 0, 0  
 Pulse: 275ns, IFfilt: 5.0MHz; ppPol: HH HV VV  
 TxPol: HHVV, PRF: 20 10 20 10 kHz  
 Range: Delay 75m, Spacing 15m, Gates 100  
 Ave. Pulses: 84, Rng/Prof Aspect@90m/s: 5.7

	Min	Max	Mean	Std	Varc%
hhN(dB)	-68.03	-64.43	-66.03	-76.02	10.0
vvN(dB)	-67.19	-63.14	-64.96	-74.92	10.1
hhL(dB)	-19.18	-2.62	-6.70	-11.77	31.1
vvL(dB)	-11.58	-1.79	-5.20	-10.02	32.9
ppN(m/s)	-12.34	12.36	-0.04	4.14	
ppT(m/s)	-97.48	97.64	-0.30	32.70	
hh/vv(dB)	-NaN	41.13	17.56	27.92	1088
vh/hh(dB)	-99.00	-99.00	-99.00	-99.00	-99.
hv/vv(dB)	-NaN	-19.09	-42.08	-38.77	214.
hnjmp(dB)	-2.01	2.73	0.18	-8.33	14.1
vnjmp(dB)	-2.06	2.64	0.18	-8.36	14.0