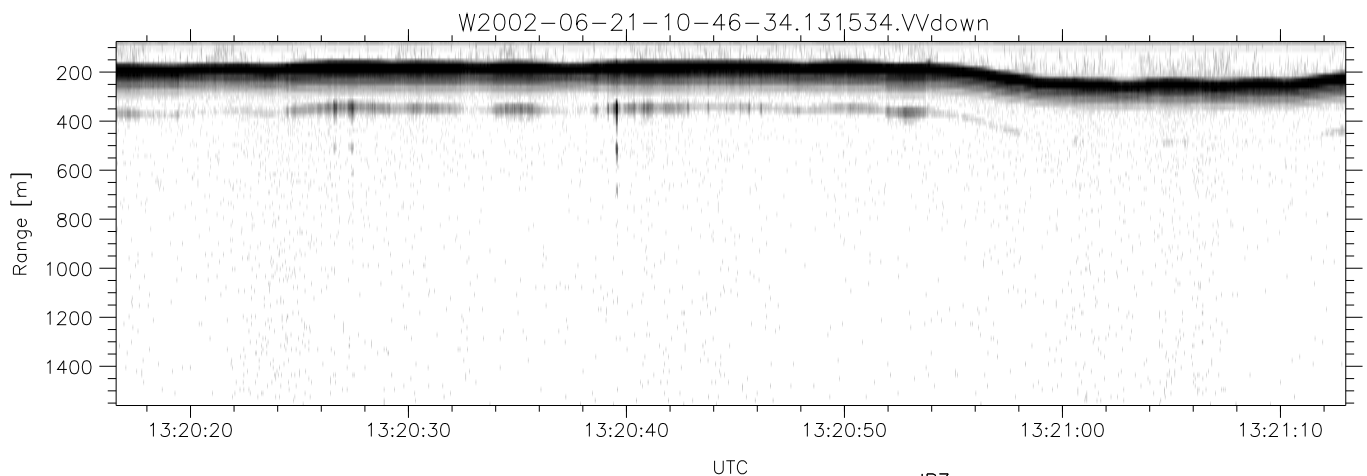
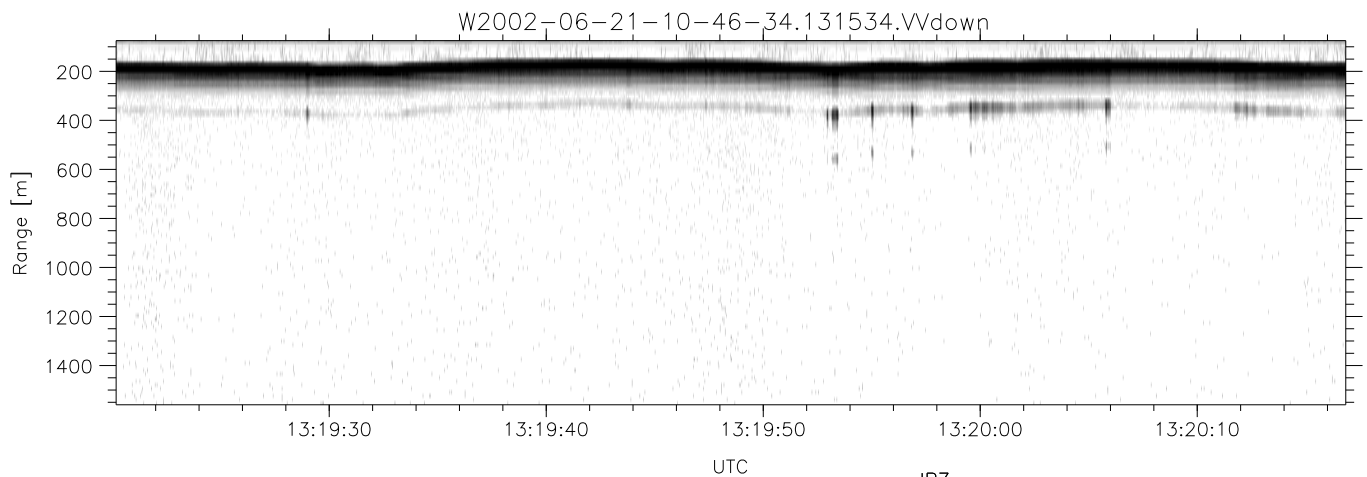
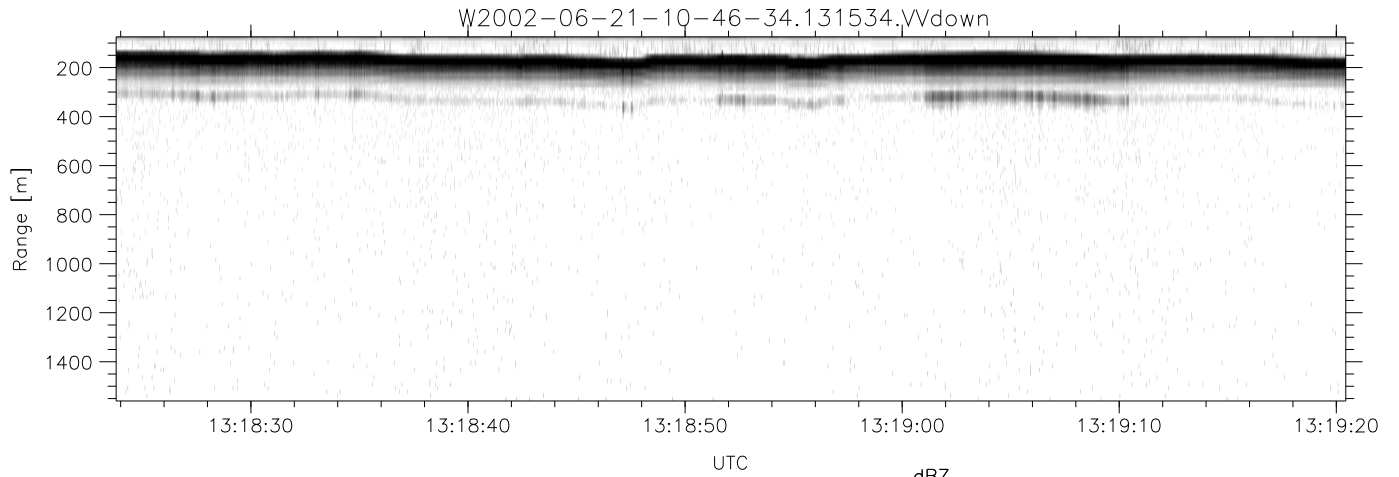


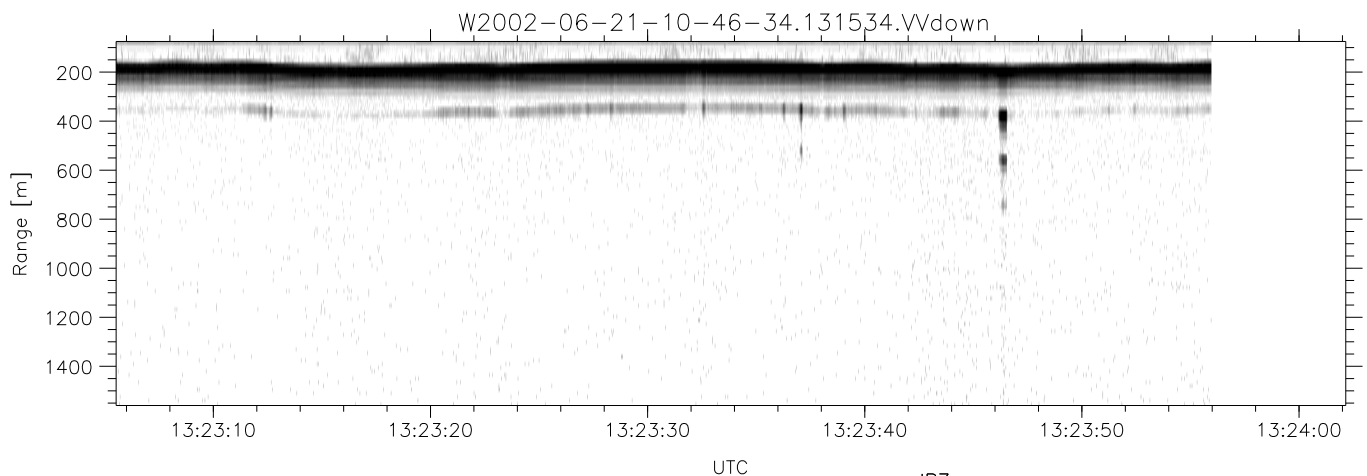
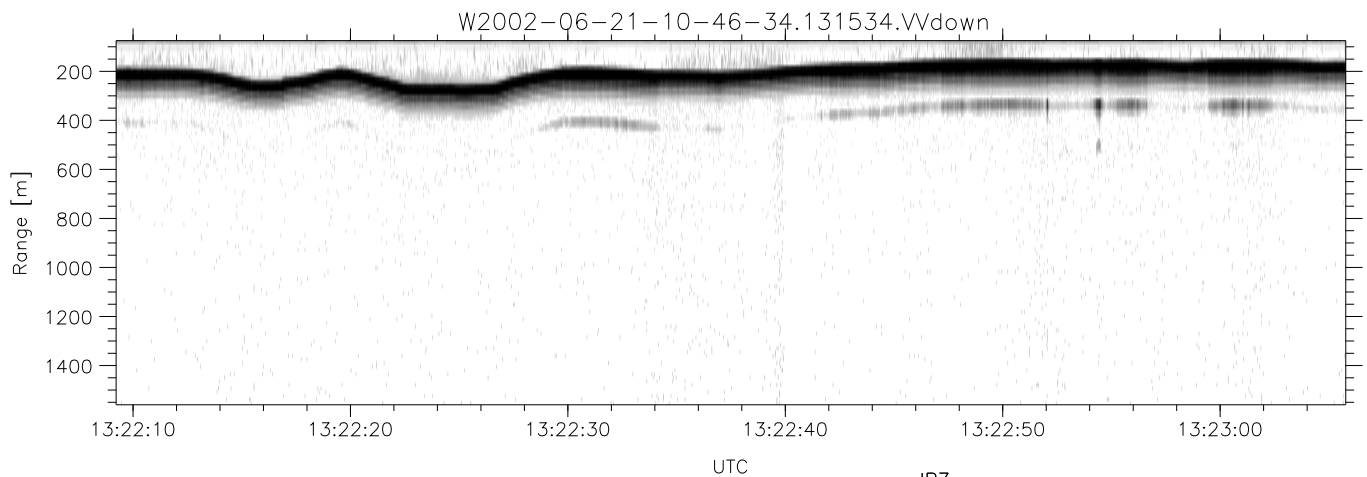
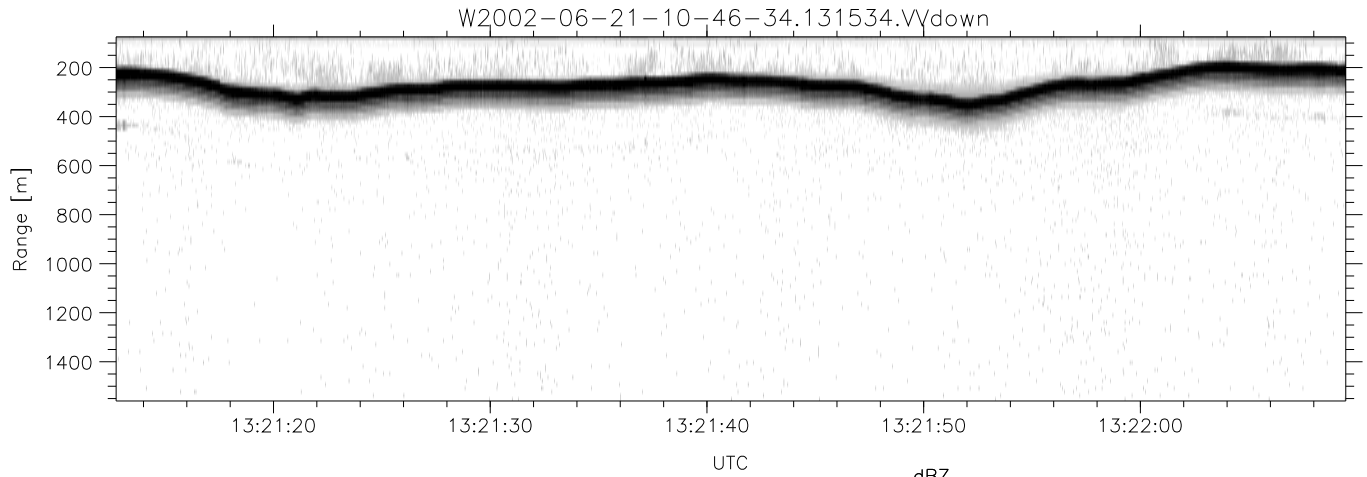
IHOP 2002 (dual-antenna config, modes 1,3,4,7) Data (cal: 49.0,50.0)

	Min	Max	Mean	Std	Varc%
W2002-06-21-10-46-34 - PPMAG4					
IRIG:1,UTC: 10:46:21.22 to 13:48:33.67, Dur: 10932s	hhN (dB)	-67.95 -64.57	-66.13	-76.17	9.9
TimeLngth: 10932.44s, TimeInt: 29ms (34.3pps)	vvN (dB)	-67.05 -63.47	-65.04	-75.02	10.0
TimeCor=-13.0s, DSPDif(mn,min,mx):29,28,392	hhL (dB)	-15.43 -5.00	-6.99	-13.85	20.6
PPS(min,max,std): 22,36,2.43	vvL (dB)	-10.08 -2.44	-5.33	-10.04	33.8
Prof: 398 to 375046, NumProf(t/r): 374648/17069	ppN (m/s)	-12.89 12.56	-0.08	4.14	
ProcTime/Recs: 13:15:34-13:23:55/307242-324310	ppT (m/s)	-101.8 99.20	-0.60	32.68	
MxACQtime: 33ms; DRate: 191.8KB/s; Flags: 1, 0, 0	hh/vv (dB)	-NaN 44.98	18.71	30.13	1385
Pulse: 275ns, IFfilt: 5.0MHz; ppPol: HH HV VV	vh/hh (dB)	-35.48 4.05	1.32	1.07	94.5
TxPol: HHVV, PRF: 20 10 20 10 kHz	hv/vv (dB)	-NaN -33.58	-50.84	-45.79	320.
Range: Delay 75m, Spacing 15m, Gates 100	hn_jmp (dB)	-2.28 2.19	-0.07	-8.62	14.0
Ave. Pulses: 84, Rng/Prof Aspect@90m/s: 5.7	vn_jmp (dB)	-2.33 2.22	-0.09	-8.60	14.1



IHOP 2002 (dual-antenna config, modes 1,3,4,7) Data (cal: 49.0,50.0)

W2002-06-21-10-46-34 - PPMAG4	Min	Max	Mean	Std	Varc%	
IRIG:1,UTC: 10:46:21.22 to 13:48:33.67, Dur: 10932s	hhN (dB)	-67.95	-64.57	-66.13	-76.17	9.9
TimeLngth: 10932.44s, TimeInt: 29ms (34.3pps)	vvN (dB)	-67.05	-63.47	-65.04	-75.02	10.0
TimeCor=-13.0s, DSPDif(mn,min,mx):29,28,392	hhL (dB)	-15.43	-5.00	-6.99	-13.85	20.6
PPS(min,max,std): 22,36,2.43	vvL (dB)	-10.08	-2.44	-5.33	-10.04	33.8
Prof: 398 to 375046, NumProf(t/r): 374648/17069	ppN (m/s)	-12.89	12.56	-0.08	4.14	
ProcTime/Recs: 13:15:34-13:23:55/307242-324310	ppT (m/s)	-101.8	99.20	-0.60	32.68	
MxACQtime: 33ms; DRate: 191.8KB/s; Flags: 1, 0, 0	hh/vv (dB)	-NaN	44.98	18.71	30.13	1385
Pulse: 275ns, IFilt: 5.0MHz; ppPol: HH HV VV	vh/hh (dB)	-35.48	4.05	1.32	1.07	94.5
TxPol: HHVV, PRF: 20 10 20 10 kHz	hv/vv (dB)	-NaN	-33.58	-50.84	-45.79	320.
Range: Delay 75m, Spacing 15m, Gates 100	hn/jmp (dB)	-2.28	2.19	-0.07	-8.62	14.0
Ave. Pulses: 84, Rng/Prof Aspect@90m/s: 5.7	vn/jmp (dB)	-2.33	2.22	-0.09	-8.60	14.1



IHOP 2002 (dual-antenna config, modes 1,3,4,7) Data (cal: 49.0,50.0)

W2002-06-21-10-46-34 - PPMAG4	Min	Max	Mean	Std	Varc%	
IRIG:1,UTC: 10:46:21.22 to 13:48:33.67, Dur: 10932s	hhN(dB)	-67.95	-64.57	-66.13	-76.17	9.9
TimeLngth: 10932.44s, TimeInt: 29ms (34.3pps)	vvN(dB)	-67.05	-63.47	-65.04	-75.02	10.0
TimeCor=-13.0s, DSPDif(mn,min,mx):29,28,392	hhL(dB)	-15.43	-5.00	-6.99	-13.85	20.6
PPS(min,max,std): 22,36,2.43	vvL(dB)	-10.08	-2.44	-5.33	-10.04	33.8
Prof: 398 to 375046, NumProf(t/r): 374648/17069	ppN(m/s)	-12.89	12.56	-0.08	4.14	
ProcTime/Recs: 13:15:34-13:23:55/307242-324310	ppT(m/s)	-101.8	99.20	-0.60	32.68	
MxACQtime: 33ms; DRate: 191.8KB/s; Flags: 1, 0, 0	hh/vv(dB)	-NaN	44.98	18.71	30.13	1385
Pulse: 275ns, IFilt: 5.0MHz; ppPol: HH HV VV	vh/hh(dB)	-35.48	4.05	1.32	1.07	94.5
TxPol: HHVV, PRF: 20 10 20 10 kHz	hv/vv(dB)	-NaN	-33.58	-50.84	-45.79	320.
Range: Delay 75m, Spacing 15m, Gates 100	hnjmp(dB)	-2.28	2.19	-0.07	-8.62	14.0
Ave. Pulses: 84, Rng/Prof Aspect@90m/s: 5.7	vnjmp(dB)	-2.33	2.22	-0.09	-8.60	14.1