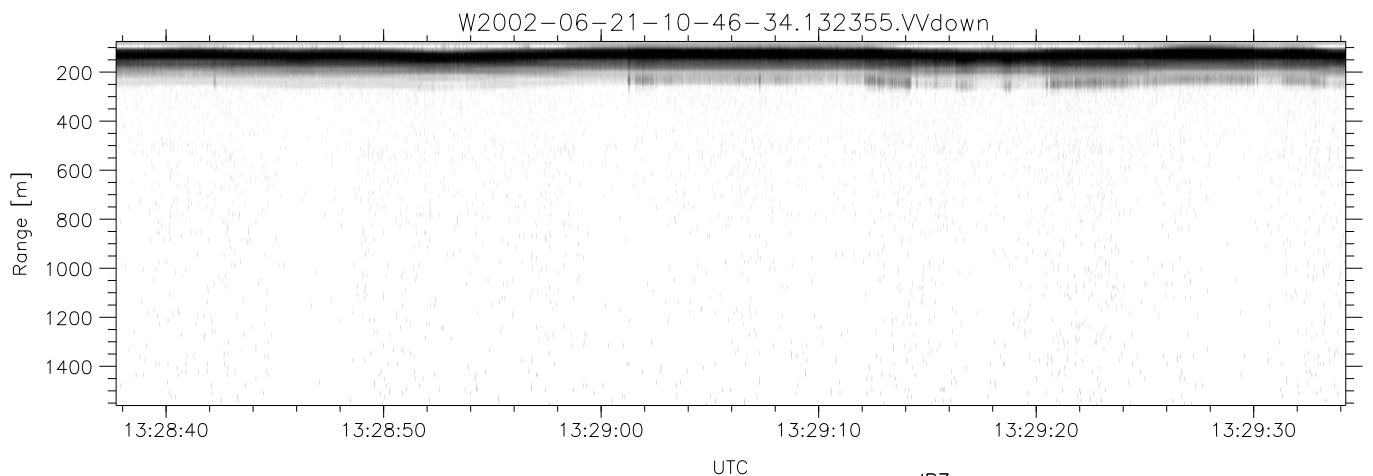
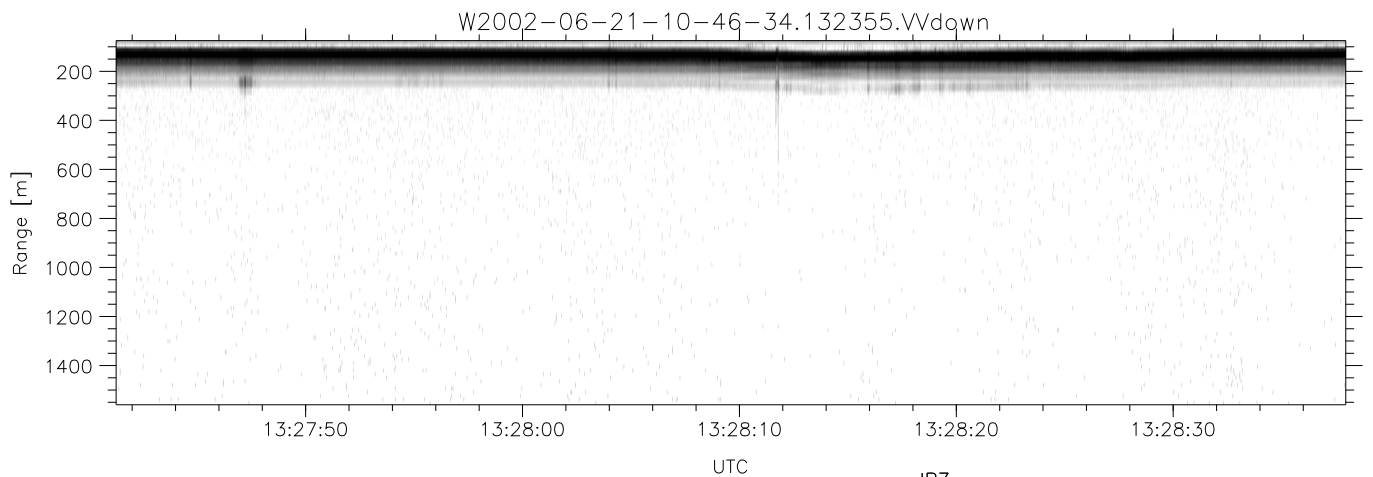
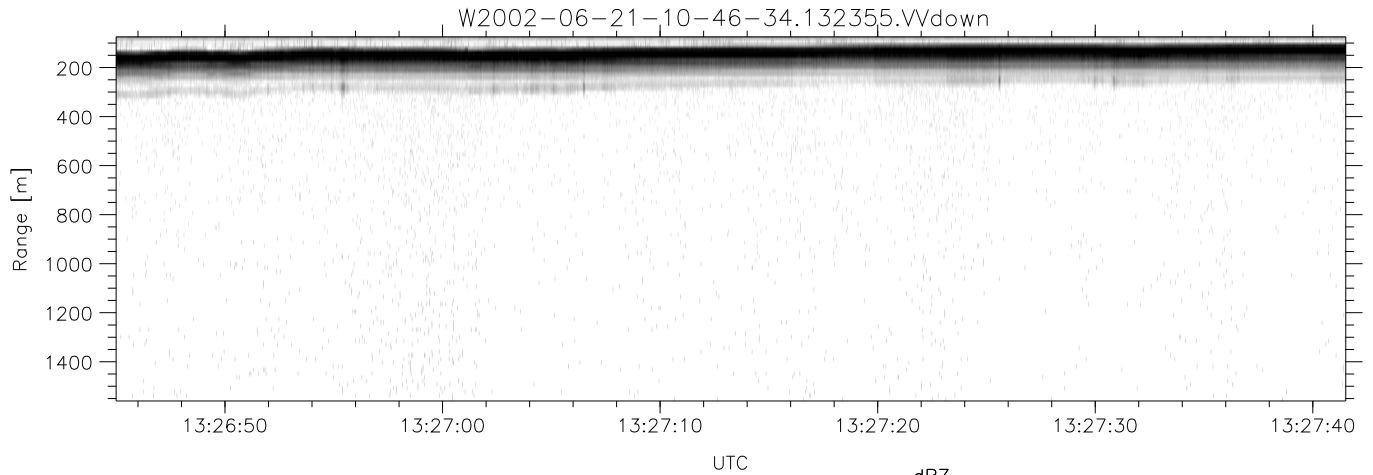


IHOP 2002 (dual-antenna config, modes 1,3,4,7) Data (cal: 49.0,50.0)

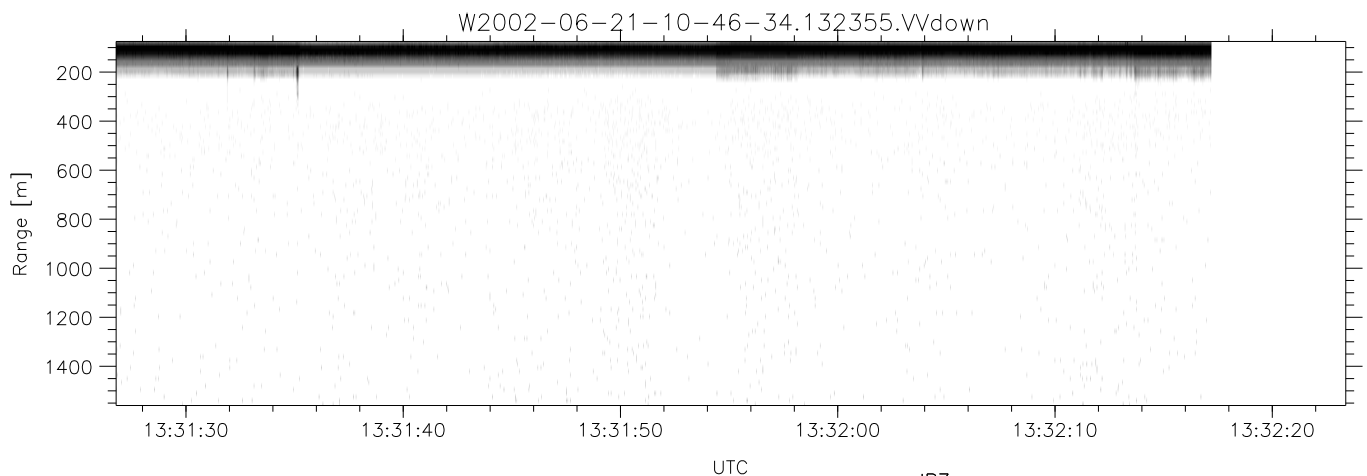
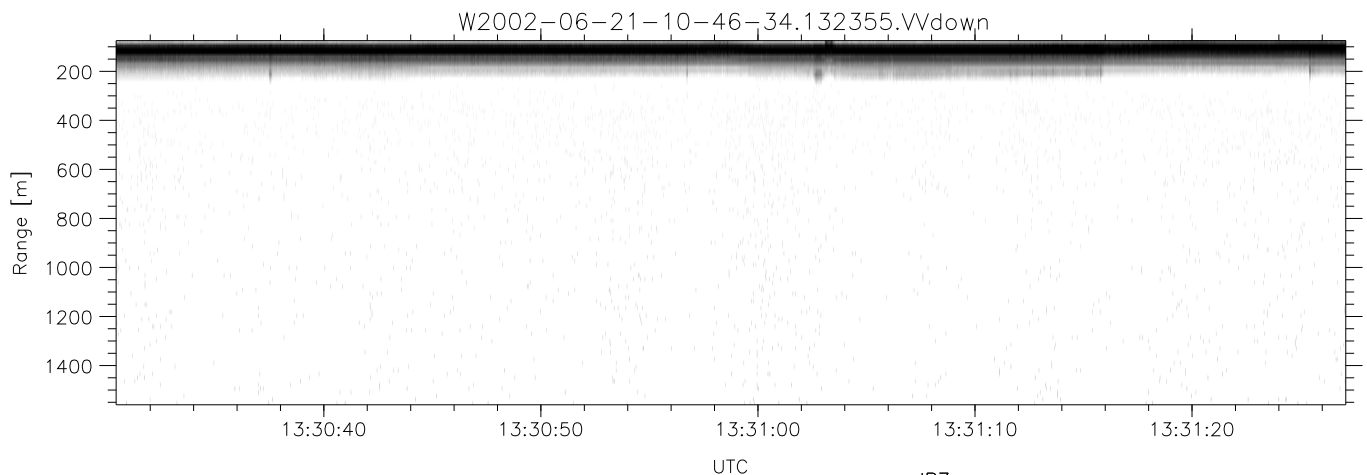
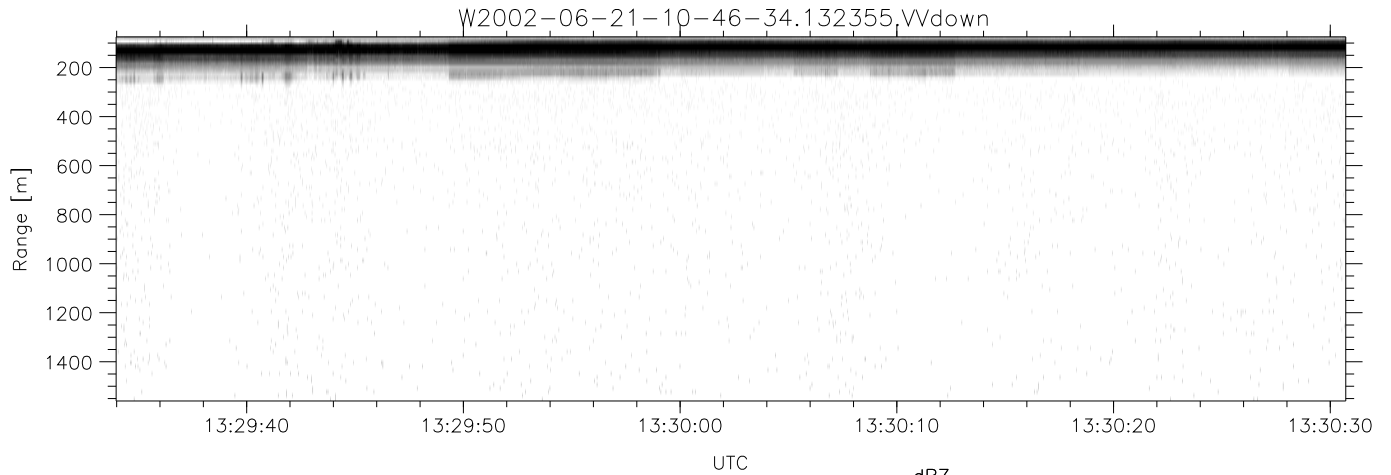
W2002-06-21-10-46-34 - PPMAG4  
 IRIG:1,UTC: 10:46:21.22 to 13:48:33.67, Dur: 10932s  
 TimeLngth: 10932.44s, TimeInt: 29ms (34.3pps)  
 TimeCor=-13.0s, DSPDif(mn,min,mx):29,28,392  
 PPS(min,max,std): 22,36,2.40  
 Prof: 398 to 375046, NumProf(t/r): 374648/17069  
 ProcTime/Recs: 13:23:55-13:32:17/324311-341379  
 MxACQtime: 33ms; DRate: 191.8KB/s; Flags: 1, 0, 0  
 Pulse: 275ns, IFfilt: 5.0MHz; ppPol: HH HV VV  
 TxPol: HHVV, PRF: 20 10 20 10 kHz  
 Range: Delay 75m, Spacing 15m, Gates 100  
 Ave. Pulses: 84, Rng/Prof Aspect@90m/s: 5.7

|           | Min    | Max    | Mean   | Std    | Varc% |
|-----------|--------|--------|--------|--------|-------|
| hhN(dB)   | -68.01 | -64.53 | -66.17 | -76.21 | 9.9   |
| vvN(dB)   | -67.44 | -63.51 | -65.12 | -75.12 | 10.0  |
| hhL(dB)   | -12.28 | -5.37  | -7.37  | -14.30 | 20.3  |
| vvL(dB)   | -8.55  | -2.08  | -5.37  | -10.57 | 30.1  |
| ppN(m/s)  | -12.92 | 12.40  | 0.01   | 4.13   |       |
| ppT(m/s)  | -102.0 | 98.00  | 0.08   | 32.62  |       |
| hh/vv(dB) | -NaN   | 35.08  | 12.43  | 21.15  | 745.  |
| vh/hh(dB) | -99.00 | -99.00 | -99.00 | -99.00 | -99.  |
| hv/vv(dB) | -NaN   | -24.59 | -45.72 | -42.33 | 218.  |
| hnjmp(dB) | -2.45  | 2.40   | 0.17   | -8.37  | 14.0  |
| vnjmp(dB) | -2.10  | 2.46   | 0.19   | -8.35  | 14.0  |



IHOP 2002 (dual-antenna config, modes 1,3,4,7) Data (cal: 49.0,50.0)

|   | Min        | Max    | Mean   | Std    | Varc%  |      |
|---|------------|--------|--------|--------|--------|------|
| W2002-06-21-10-46-34 - PPMAG4                       |            |        |        |        |        |      |
| IRIG:1,UTC: 10:46:21.22 to 13:48:33.67, Dur: 10932s | hhN (dB)   | -68.01 | -64.53 | -66.17 | -76.21 | 9.9  |
| TimeLngth: 10932.44s, TimeInt: 29ms (34.3pps)       | vvN (dB)   | -67.44 | -63.51 | -65.12 | -75.12 | 10.0 |
| TimeCor=-13.0s, DSPDif(mn,min,mx):29,28,392         | hhL (dB)   | -12.28 | -5.37  | -7.37  | -14.30 | 20.3 |
| PPS(min,max,std): 22,36,2.40                        | vvL (dB)   | -8.55  | -2.08  | -5.37  | -10.57 | 30.1 |
| Prof: 398 to 375046, NumProf(t/r): 374648/17069     | ppN (m/s)  | -12.92 | 12.40  | 0.01   | 4.13   |      |
| ProcTime/Recs: 13:23:55-13:32:17/324311-341379      | ppT (m/s)  | -102.0 | 98.00  | 0.08   | 32.62  |      |
| MxACQtime: 33ms; DRate: 191.8KB/s; Flags: 1, 0, 0   | hh/vv (dB) | -NaN   | 35.08  | 12.43  | 21.15  | 745. |
| Pulse: 275ns, IFilt: 5.0MHz; ppPol: HH HV VV        | vh/hh (dB) | -99.00 | -99.00 | -99.00 | -99.00 | -99. |
| TxPol: HHVV, PRF: 20 10 20 10 kHz                   | hv/vv (dB) | -NaN   | -24.59 | -45.72 | -42.33 | 218. |
| Range: Delay 75m, Spacing 15m, Gates 100            | hnjmp (dB) | -2.45  | 2.40   | 0.17   | -8.37  | 14.0 |
| Ave. Pulses: 84, Rng/Prof Aspect@90m/s: 5.7         | vnjmp (dB) | -2.10  | 2.46   | 0.19   | -8.35  | 14.0 |



IHOP 2002 (dual-antenna config, modes 1,3,4,7) Data (cal: 49.0,50.0)

W2002-06-21-10-46-34 - PPMAG4  
 IRIG:1,UTC: 10:46:21.22 to 13:48:33.67, Dur: 10932s  
 TimeLngth: 10932.44s, TimeInt: 29ms (34.3pps)  
 TimeCor=-13.0s, DSPDif(mn,min,mx):29,28,392  
 PPS(min,max,std): 22,36,2.40  
 Prof: 398 to 375046, NumProf(t/r): 374648/17069  
 ProcTime/Recs: 13:23:55-13:32:17/324311-341379  
 MxACQtime: 33ms; DRate: 191.8KB/s; Flags: 1, 0, 0  
 Pulse: 275ns, IFfilt: 5.0MHz; ppPol: HH HV VV  
 TxPol: HHVV, PRF: 20 10 20 10 kHz  
 Range: Delay 75m, Spacing 15m, Gates 100  
 Ave. Pulses: 84, Rng/Prof Aspect@90m/s: 5.7

|           | Min    | Max    | Mean   | Std    | Varc% |
|-----------|--------|--------|--------|--------|-------|
| hhN(dB)   | -68.01 | -64.53 | -66.17 | -76.21 | 9.9   |
| vvN(dB)   | -67.44 | -63.51 | -65.12 | -75.12 | 10.0  |
| hhL(dB)   | -12.28 | -5.37  | -7.37  | -14.30 | 20.3  |
| vvL(dB)   | -8.55  | -2.08  | -5.37  | -10.57 | 30.1  |
| ppN(m/s)  | -12.92 | 12.40  | 0.01   | 4.13   |       |
| ppT(m/s)  | -102.0 | 98.00  | 0.08   | 32.62  |       |
| hh/vv(dB) | -NaN   | 35.08  | 12.43  | 21.15  | 745.  |
| vh/hh(dB) | -99.00 | -99.00 | -99.00 | -99.00 | -99.  |
| hv/vv(dB) | -NaN   | -24.59 | -45.72 | -42.33 | 218.  |
| hnjmp(dB) | -2.45  | 2.40   | 0.17   | -8.37  | 14.0  |
| vnjmp(dB) | -2.10  | 2.46   | 0.19   | -8.35  | 14.0  |