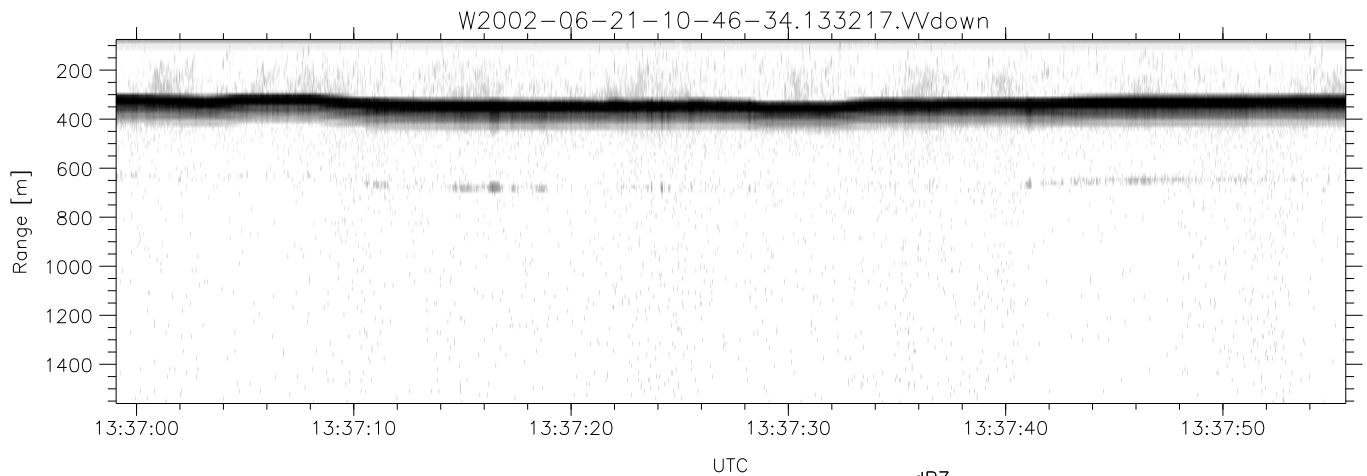
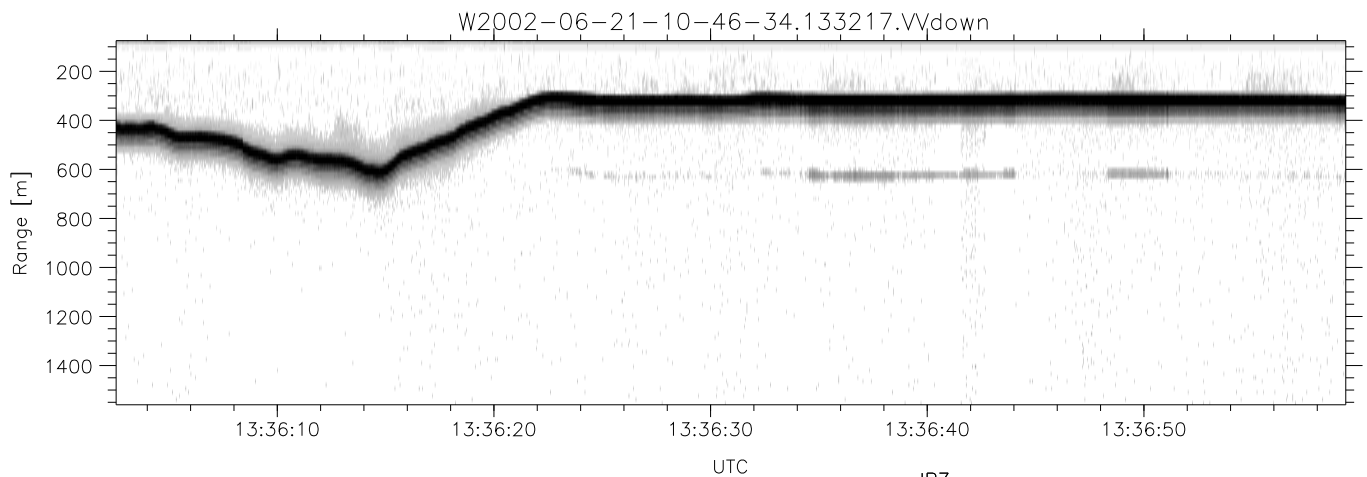
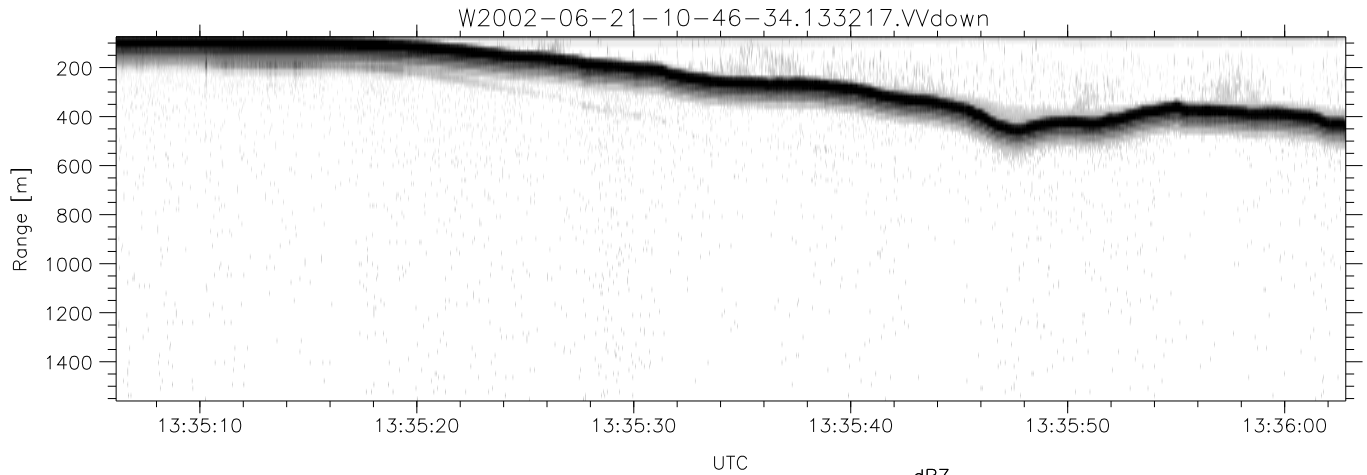


IHOP 2002 (dual-antenna config, modes 1,3,4,7) Data (cal: 49.0,50.0)

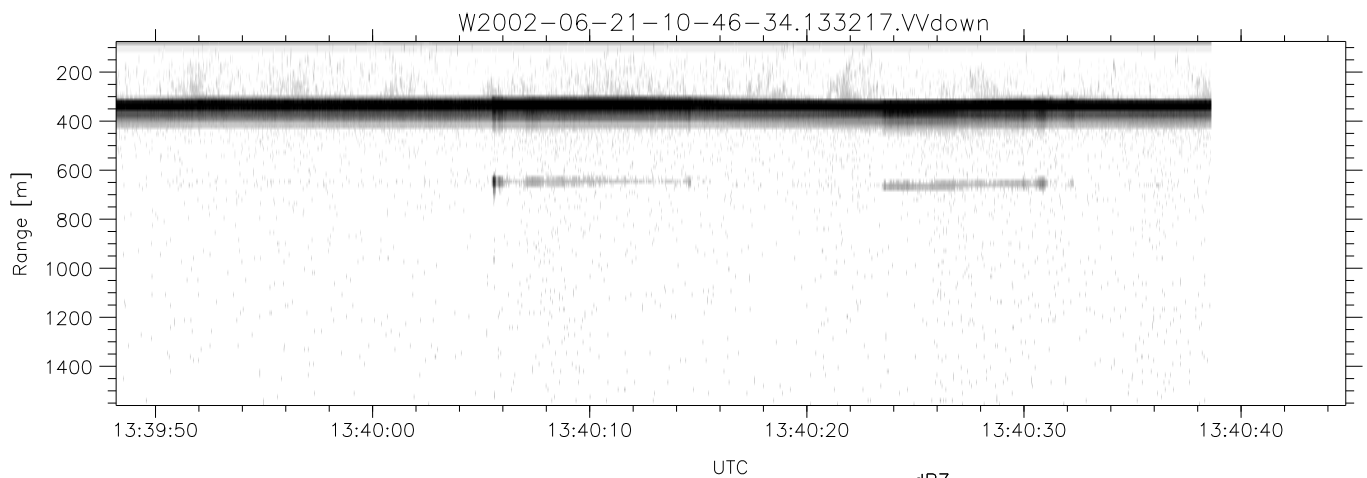
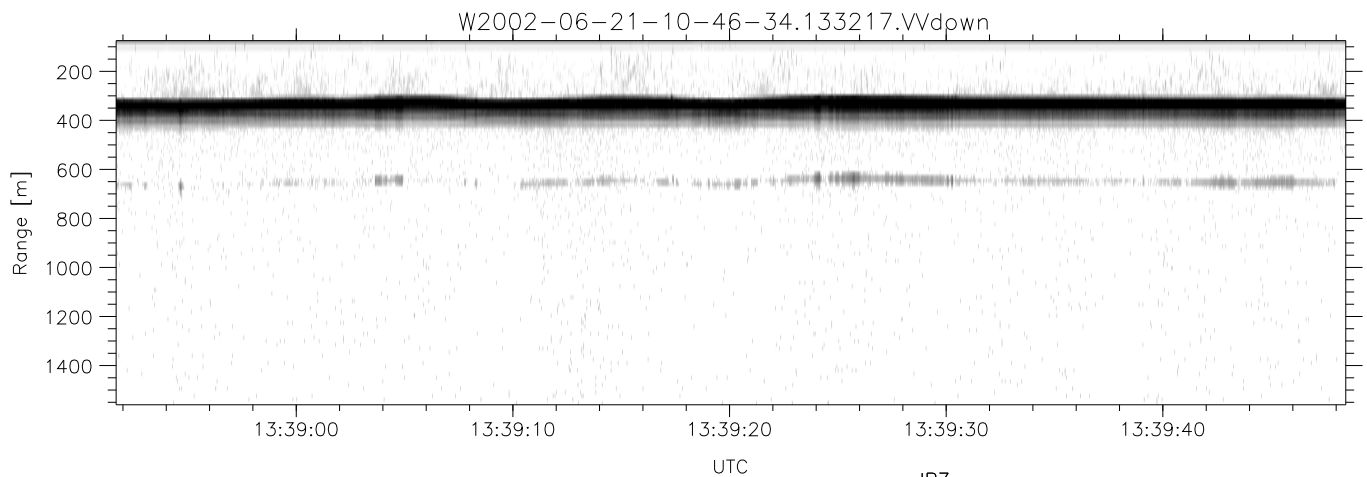
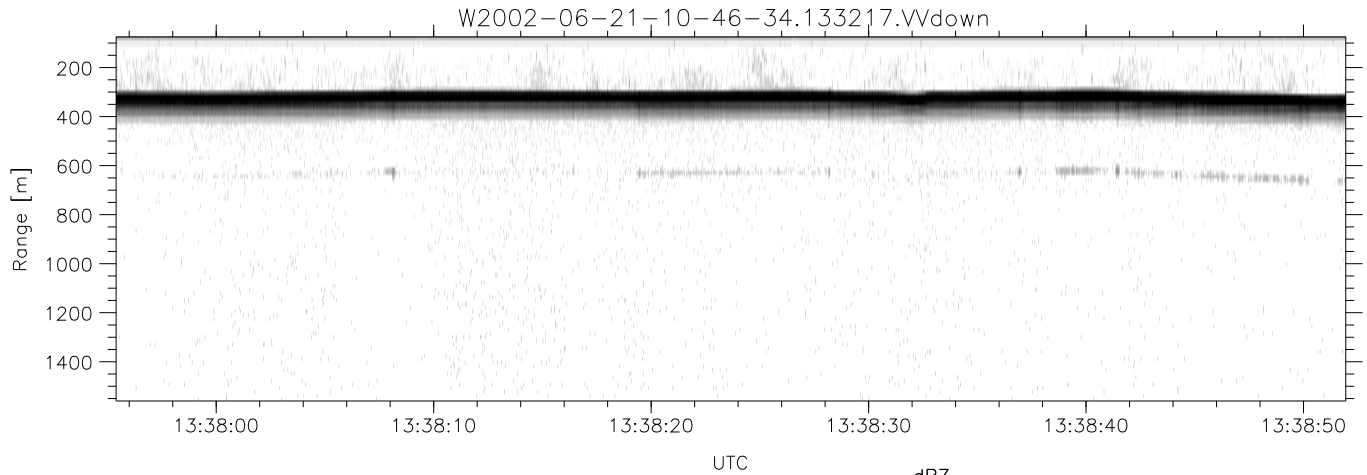
W2002-06-21-10-46-34 - PPMAG4	Min	Max	Mean	Std	Varc%	
IRIG:1,UTC: 10:46:21.22 to 13:48:33.67, Dur: 10932s	hhN(dB)	-67.90	-64.57	-66.19	-76.25	9.9
TimeLngth: 10932.44s, TimeInt: 29ms (34.3pps)	vvN(dB)	-66.97	-63.52	-65.17	-75.13	10.1
TimeCor=-13.0s, DSPDif(mn,min,mx):29,28,346	hhL(dB)	-11.10	-4.69	-6.89	-13.37	22.5
PPS(min,max,std): 24,36,2.43	vvL(dB)	-9.36	-1.61	-4.73	-10.49	26.5
Prof: 398 to 375046, NumProf(t/r): 374648/17069	ppN(m/s)	-12.59	12.36	-0.03	4.15	
ProcTime/Recs: 13:32:17-13:40:38/341380-358448	ppT(m/s)	-99.47	97.63	-0.21	32.79	
MxACQtime: 33ms; DRate: 191.8KB/s; Flags: 1, 0, 0	hh/vv(dB)	-NaN	57.83	30.95	44.12	2074
Pulse: 275ns, IFfilt: 5.0MHz; ppPol: HH HV VV	vh/hh(dB)	-40.10	-34.44	-35.77	-38.39	54.8
TxPol: HHVV, PRF: 20 10 20 10 kHz	hv/vv(dB)	-NaN	-15.13	-44.27	-38.40	386.
Range: Delay 75m, Spacing 15m, Gates 100	hn/jmp(dB)	-2.51	2.14	-0.09	-8.65	13.9
Ave. Pulses: 84, Rng/Prof Aspect@90m/s: 5.7	vn/jmp(dB)	-2.85	2.08	-0.09	-8.62	14.0



IHOP 2002 (dual-antenna config, modes 1,3,4,7) Data (cal: 49.0,50.0)

W2002-06-21-10-46-34 - PPMAG4
 IRIG:1,UTC: 10:46:21.22 to 13:48:33.67, Dur: 10932s
 TimeLngth: 10932.44s, TimeInt: 29ms (34.3pps)
 TimeCor=-13.0s, DSPDif(mn,min,mx):29,28,346
 PPS(min,max,std): 24,36,2.43
 Prof: 398 to 375046, NumProf(t/r): 374648/17069
 ProcTime/Recs: 13:32:17-13:40:38/341380-358448
 MxACQtime: 33ms; DRate: 191.8KB/s; Flags: 1, 0, 0
 Pulse: 275ns, IFfilt: 5.0MHz; ppPol: HH HV VV
 TxPol: HHVV, PRF: 20 10 20 10 kHz
 Range: Delay 75m, Spacing 15m, Gates 100
 Ave. Pulses: 84, Rng/Prof Aspect@90m/s: 5.7

	Min	Max	Mean	Std	Varc%
hhN(dB)	-67.90	-64.57	-66.19	-76.25	9.9
vvN(dB)	-66.97	-63.52	-65.17	-75.13	10.1
hhL(dB)	-11.10	-4.69	-6.89	-13.37	22.5
vvL(dB)	-9.36	-1.61	-4.73	-10.49	26.5
ppN(m/s)	-12.59	12.36	-0.03	4.15	
ppT(m/s)	-99.47	97.63	-0.21	32.79	
hh/vv(dB)	-NaN	57.83	30.95	44.12	2074
vh/hh(dB)	-40.10	-34.44	-35.77	-38.39	54.8
hv/vv(dB)	-NaN	-15.13	-44.27	-38.40	386.
hnjmp(dB)	-2.51	2.14	-0.09	-8.65	13.9
vnjmp(dB)	-2.85	2.08	-0.09	-8.62	14.0



IHOP 2002 (dual-antenna config, modes 1,3,4,7) Data (cal: 49.0,50.0)

W2002-06-21-10-46-34 - PPMAG4
 IRIG:1,UTC: 10:46:21.22 to 13:48:33.67, Dur: 10932s
 TimeLngth: 10932.44s, TimeInt: 29ms (34.3pps)
 TimeCor=-13.0s, DSPDif(mn,min,mx):29,28,346
 PPS(min,max,std): 24,36,2.43
 Prof: 398 to 375046, NumProf(t/r): 374648/17069
 ProcTime/Recs: 13:32:17-13:40:38/341380-358448
 MxACQtime: 33ms; DRate: 191.8KB/s; Flags: 1, 0, 0
 Pulse: 275ns, IFfilt: 5.0MHz; ppPol: HH HV VV
 TxPol: HHVV, PRF: 20 10 20 10 kHz
 Range: Delay 75m, Spacing 15m, Gates 100
 Ave. Pulses: 84, Rng/Prof Aspect@90m/s: 5.7

	Min	Max	Mean	Std	Varc%
hhN(dB)	-67.90	-64.57	-66.19	-76.25	9.9
vvN(dB)	-66.97	-63.52	-65.17	-75.13	10.1
hhL(dB)	-11.10	-4.69	-6.89	-13.37	22.5
vvL(dB)	-9.36	-1.61	-4.73	-10.49	26.5
ppN(m/s)	-12.59	12.36	-0.03	4.15	
ppT(m/s)	-99.47	97.63	-0.21	32.79	
hh/vv(dB)	-NaN	57.83	30.95	44.12	2074
vh/hh(dB)	-40.10	-34.44	-35.77	-38.39	54.8
hv/vv(dB)	-NaN	-15.13	-44.27	-38.40	386.
hnjmp(dB)	-2.51	2.14	-0.09	-8.65	13.9
vnjmp(dB)	-2.85	2.08	-0.09	-8.62	14.0