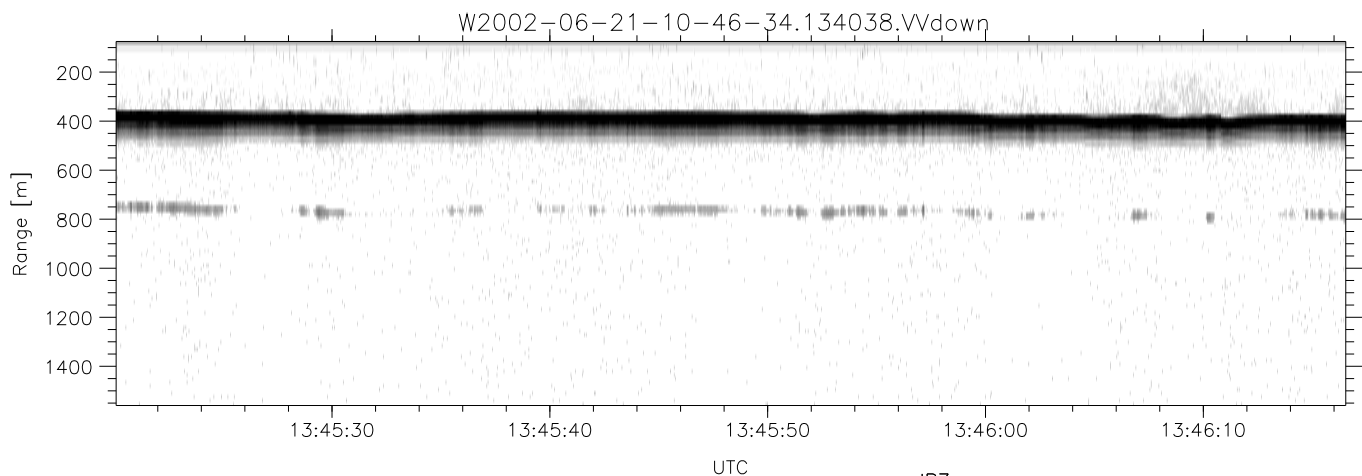
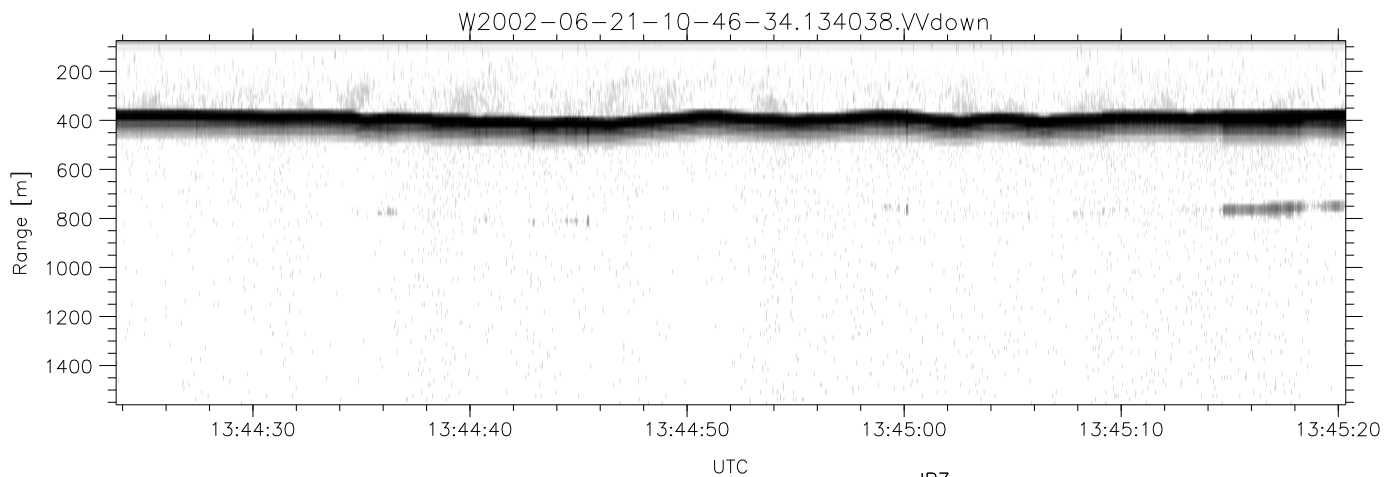
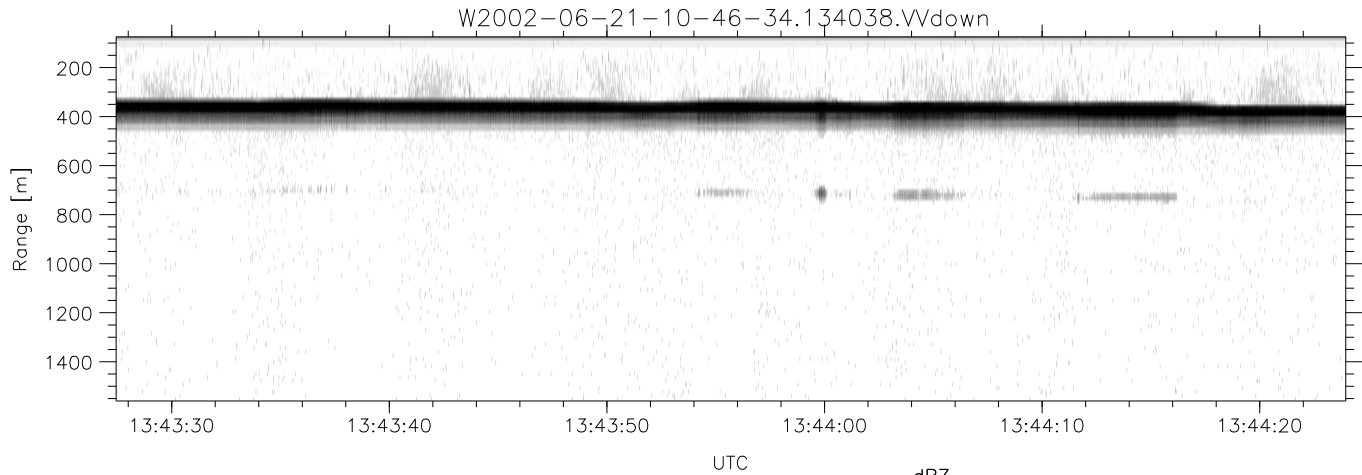


IHOP 2002 (dual-antenna config, modes 1,3,4,7) Data (cal: 49.0,50.0)

W2002-06-21-10-46-34 - PPMAG4
 IRIG:1,UTC: 10:46:21.22 to 13:48:33.67, Dur: 10932s
 TimeLngth: 10932.44s, TimeInt: 29ms (34.3pps)
 TimeCor=-13.0s, DSPDif(mn,min,mx):29,28,367
 PPS(min,max,std): 23,36,2.35
 Prof: 398 to 375046, NumProf(t/r): 374648/16199
 ProcTime/Recs: 13:40:38-13:48:33/358449-374647
 MxACQtime: 33ms; DRate: 191.8KB/s; Flags: 1, 0, 0
 Pulse: 275ns, IFfilt: 5.0MHz; ppPol: HH HV VV
 TxPol: HHVV, PRF: 20 10 20 10 kHz
 Range: Delay 75m, Spacing 15m, Gates 100
 Ave. Pulses: 84, Rng/Prof Aspect@90m/s: 5.7

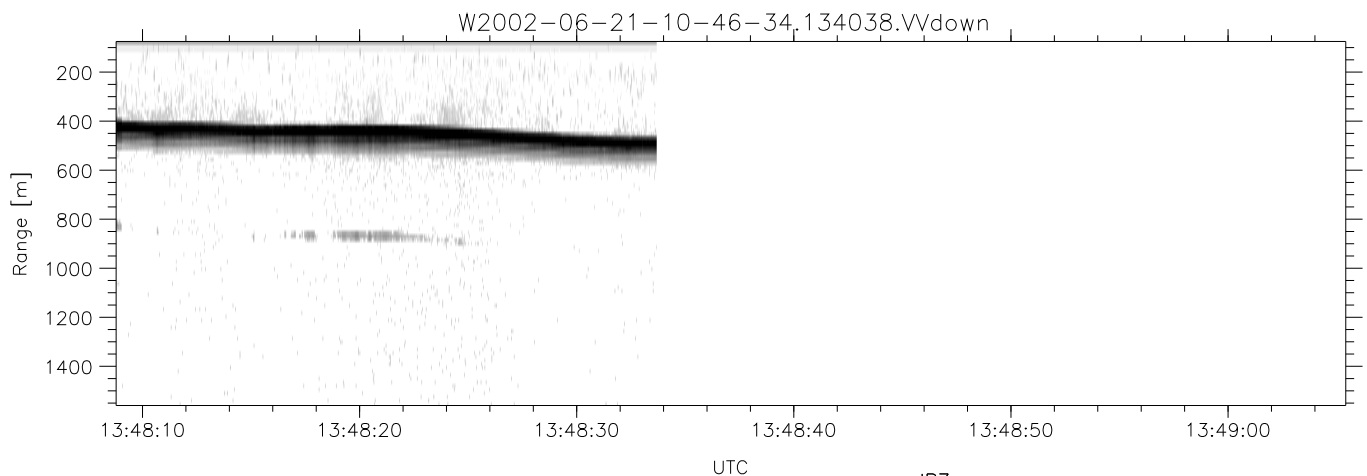
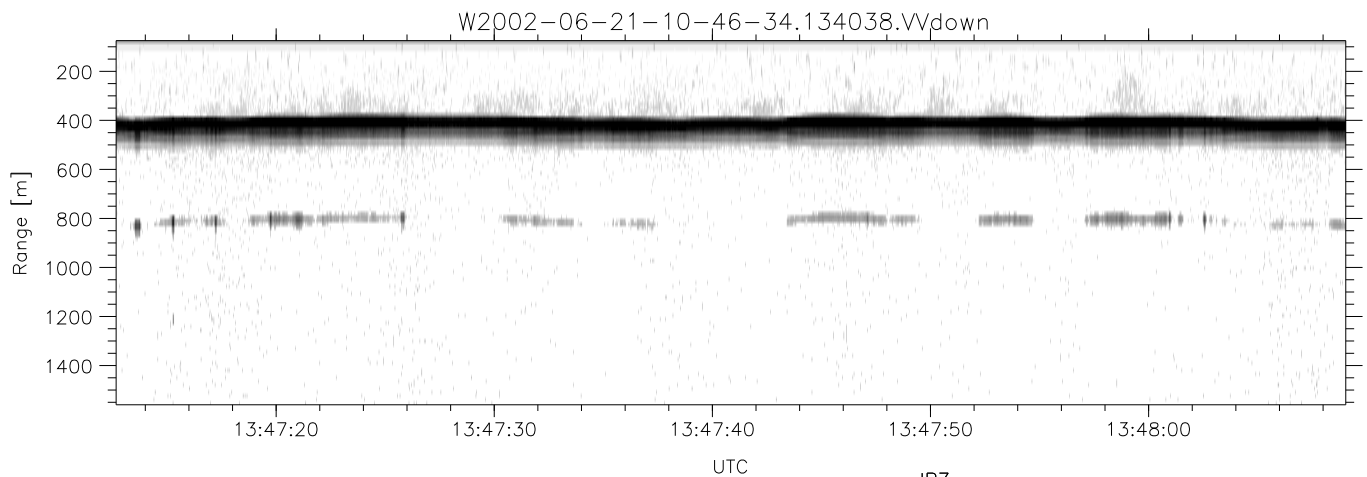
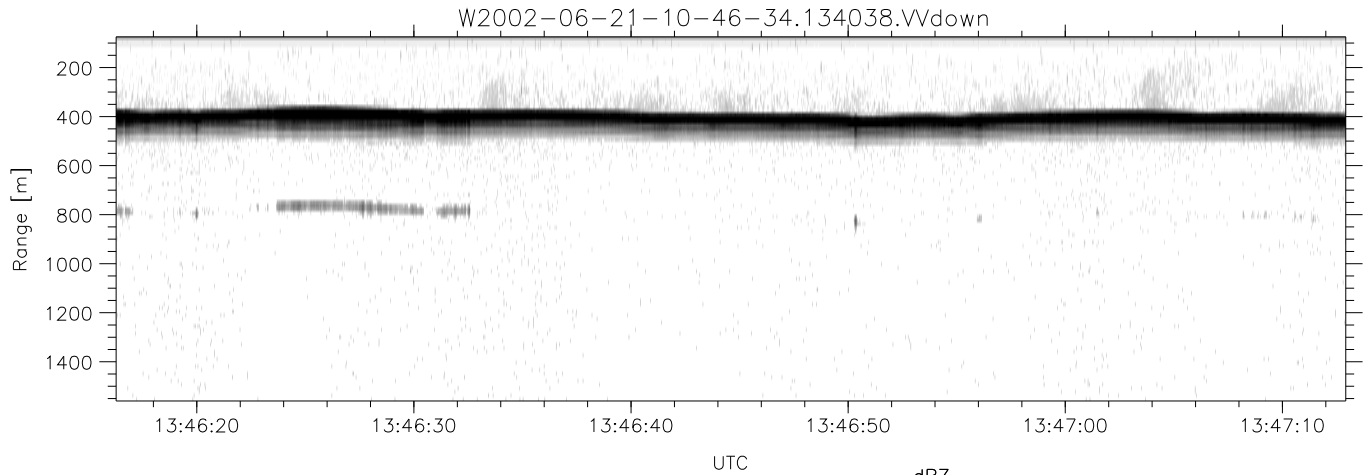
	Min	Max	Mean	Std	Varc%
hhN(dB)	-68.01	-64.66	-66.23	-76.25	10.0
vvN(dB)	-67.17	-63.54	-65.21	-75.19	10.0
hhL(dB)	-8.44	-5.12	-6.16	-16.89	8.5
vvL(dB)	-6.20	-2.57	-4.40	-13.96	11.1
ppN(m/s)	-12.63	12.33	-0.05	4.13	
ppT(m/s)	-99.76	97.40	-0.39	32.64	
hh/vv(dB)	-NaN	43.33	25.77	33.37	575.
vh/hh(dB)	-NaN	-30.76	-33.83	-34.57	84.2
hv/vv(dB)	-NaN	-34.85	-53.30	-46.97	429.
hnjmp(dB)	-2.15	2.45	0.17	-8.35	14.1
vnjmp(dB)	-2.13	2.63	0.18	-8.33	14.1



IHOP 2002 (dual-antenna config, modes 1,3,4,7) Data (cal: 49.0,50.0)

W2002-06-21-10-46-34 - PPMAG4
 IRIG:1,UTC: 10:46:21.22 to 13:48:33.67, Dur: 10932s
 TimeLngth: 10932.44s, TimeInt: 29ms (34.3pps)
 TimeCor=-13.0s, DSPDif(mn,min,mx):29,28,367
 PPS(min,max,std): 23,36,2.35
 Prof: 398 to 375046, NumProf(t/r): 374648/16199
 ProcTime/Recs: 13:40:38-13:48:33/358449-374647
 MxAcQtime: 33ms; DRate: 191.8KB/s; Flags: 1, 0, 0
 Pulse: 275ns, IFfilt: 5.0MHz; ppPol: HH HV VV
 TxPol: HHVV, PRF: 20 10 20 10 kHz
 Range: Delay 75m, Spacing 15m, Gates 100
 Ave. Pulses: 84, Rng/Prof Aspect@90m/s: 5.7

	Min	Max	Mean	Std	Varc%
hhN(dB)	-68.01	-64.66	-66.23	-76.25	10.0
vvN(dB)	-67.17	-63.54	-65.21	-75.19	10.0
hhL(dB)	-8.44	-5.12	-6.16	-16.89	8.5
vvL(dB)	-6.20	-2.57	-4.40	-13.96	11.1
ppN(m/s)	-12.63	12.33	-0.05	4.13	
ppT(m/s)	-99.76	97.40	-0.39	32.64	
hh/vv(dB)	-NaN	43.33	25.77	33.37	575.
vh/hh(dB)	-NaN	-30.76	-33.83	-34.57	84.2
hv/vv(dB)	-NaN	-34.85	-53.30	-46.97	429.
hnjmp(dB)	-2.15	2.45	0.17	-8.35	14.1
vnjmp(dB)	-2.13	2.63	0.18	-8.33	14.1



IHOP 2002 (dual-antenna config, modes 1,3,4,7) Data (cal: 49.0,50.0)

W2002-06-21-10-46-34 - PPMAG4
 IRIG:1,UTC: 10:46:21.22 to 13:48:33.67, Dur: 10932s
 TimeLngth: 10932.44s, TimeInt: 29ms (34.3pps)
 TimeCor=-13.0s, DSPDif(mn,min,mx):29,28,367
 PPS(min,max,std): 23,36,2.35
 Prof: 398 to 375046, NumProf(t/r): 374648/16199
 ProcTime/Recs: 13:40:38-13:48:33/358449-374647
 MxACQtime: 33ms; DRate: 191.8KB/s; Flags: 1, 0, 0
 Pulse: 275ns, IFilt: 5.0MHz; ppPol: HH HV VV
 TxPol: HHVV, PRF: 20 10 20 10 kHz
 Range: Delay 75m, Spacing 15m, Gates 100
 Ave. Pulses: 84, Rng/Prof Aspect@90m/s: 5.7

	Min	Max	Mean	Std	Varc%
hhN(dB)	-68.01	-64.66	-66.23	-76.25	10.0
vvN(dB)	-67.17	-63.54	-65.21	-75.19	10.0
hhL(dB)	-8.44	-5.12	-6.16	-16.89	8.5
vvL(dB)	-6.20	-2.57	-4.40	-13.96	11.1
ppN(m/s)	-12.63	12.33	-0.05	4.13	
ppT(m/s)	-99.76	97.40	-0.39	32.64	
hh/vv(dB)	-NaN	43.33	25.77	33.37	575.
vh/hh(dB)	-NaN	-30.76	-33.83	-34.57	84.2
hv/vv(dB)	-NaN	-34.85	-53.30	-46.97	429.
hnjmp(dB)	-2.15	2.45	0.17	-8.35	14.1
vnjmp(dB)	-2.13	2.63	0.18	-8.33	14.1