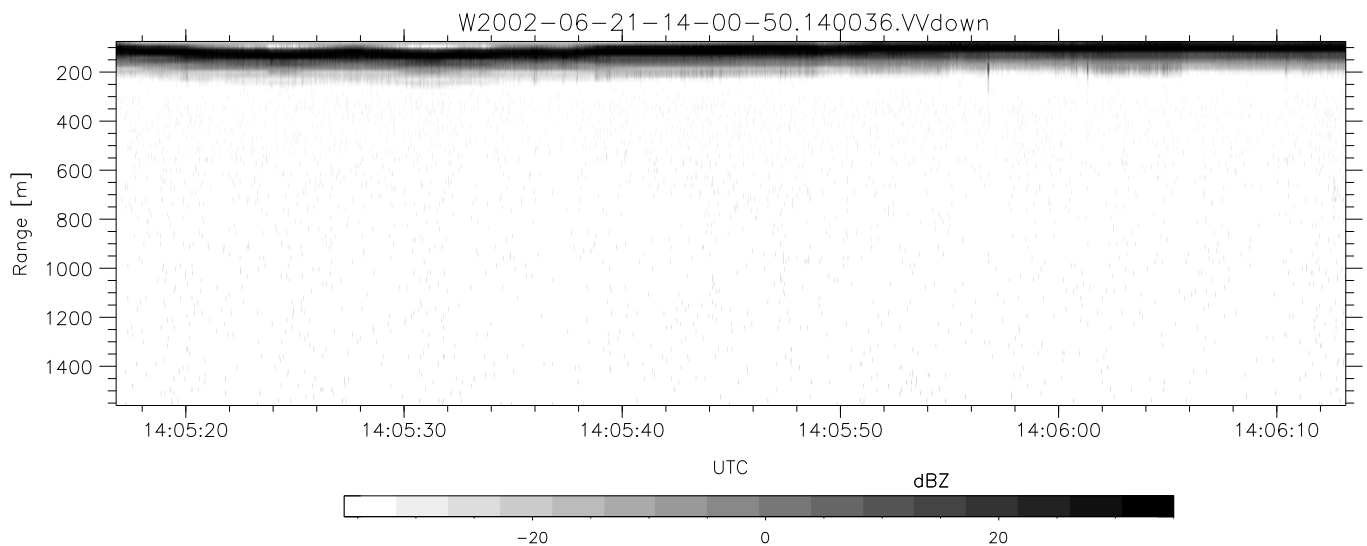
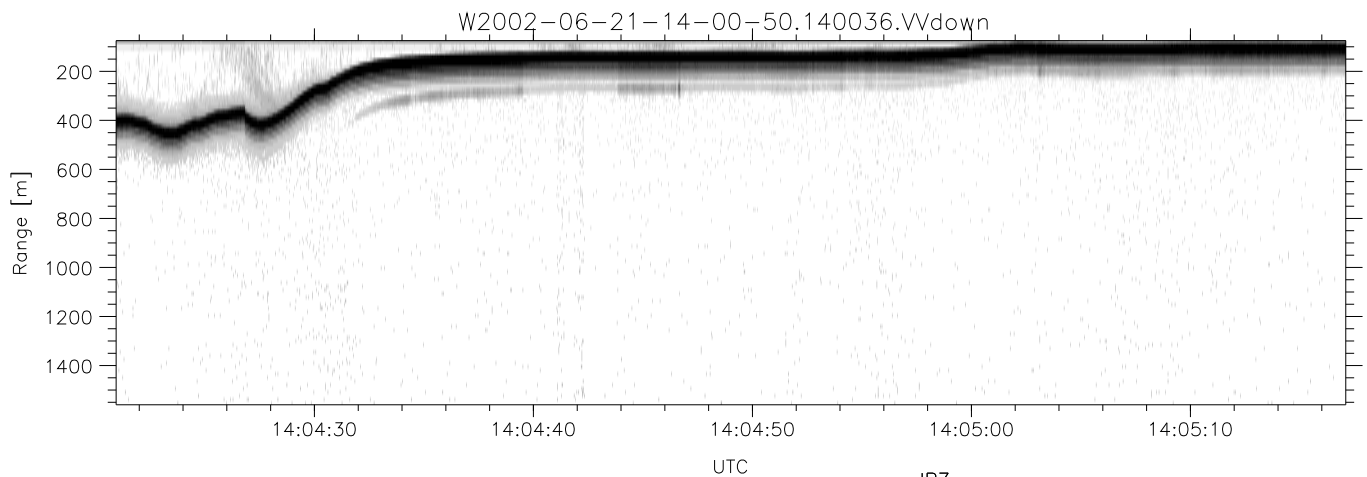
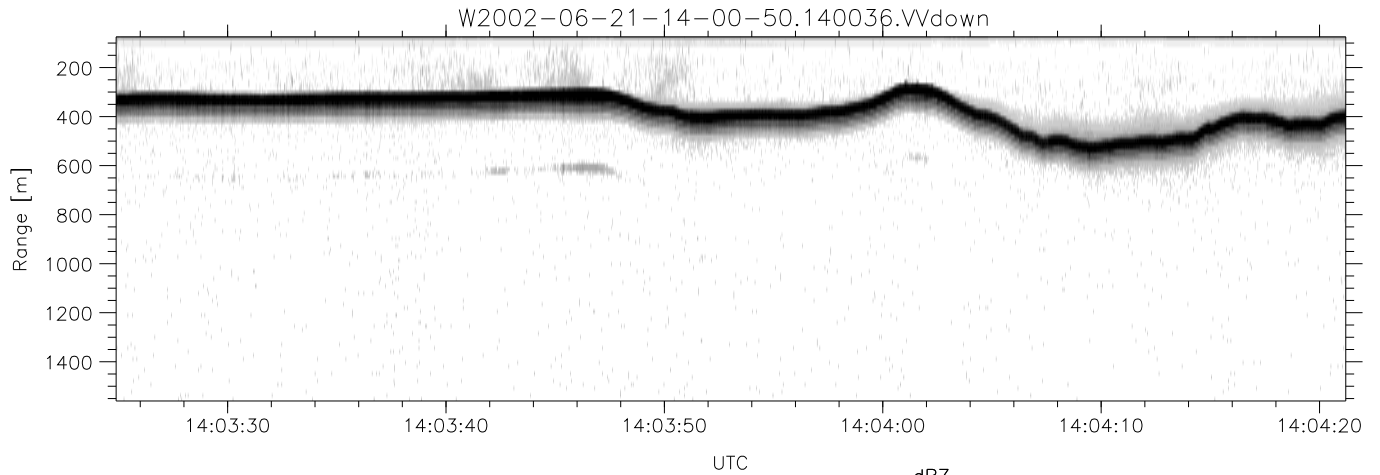


IHOP 2002 (dual-antenna config, modes 1,3,4,7) Data (cal: 49.0,50.0)

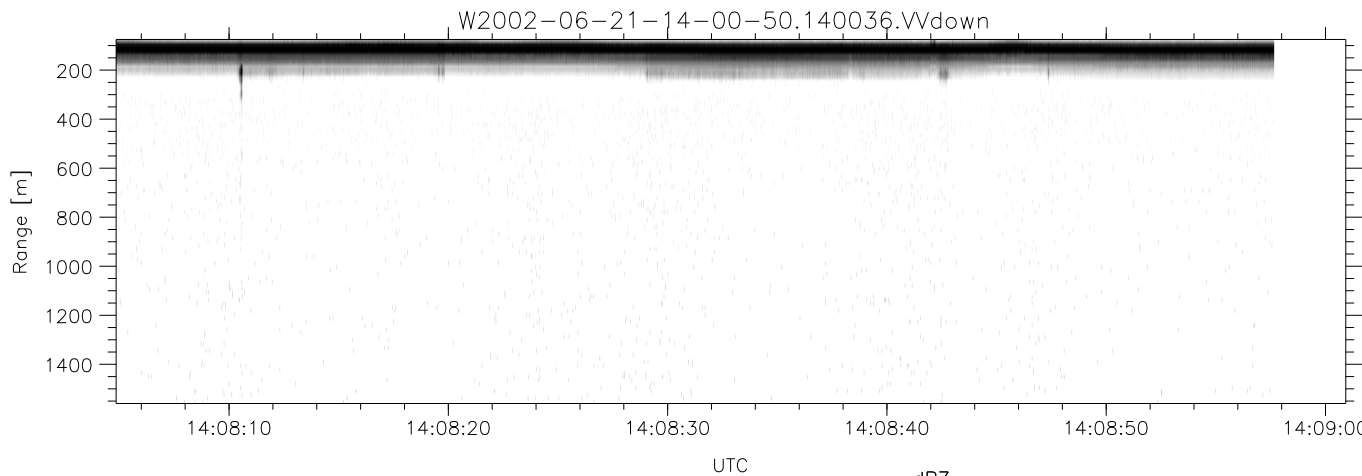
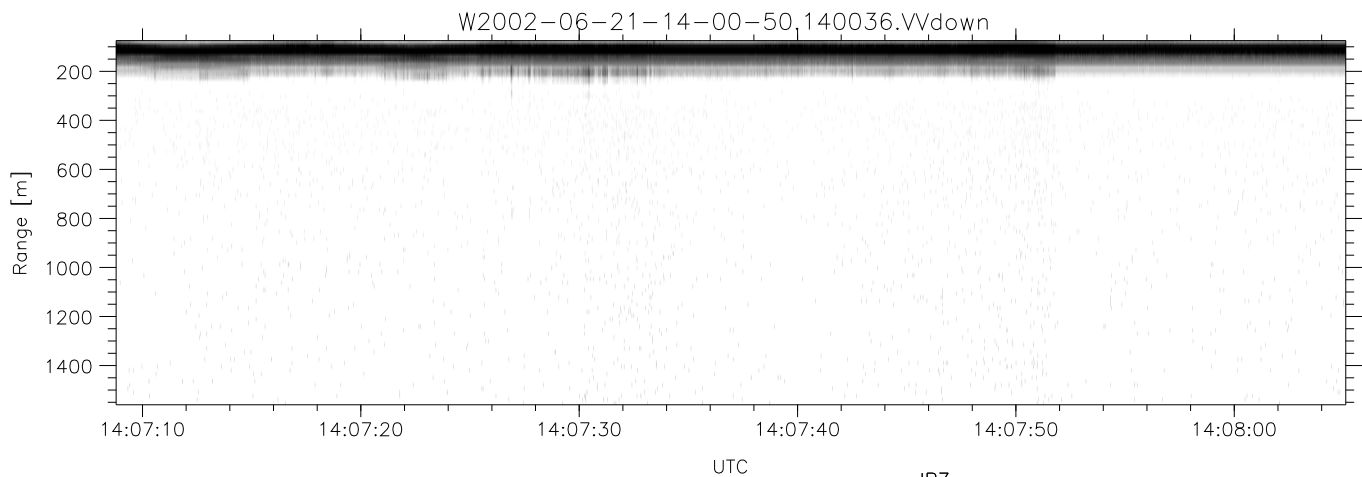
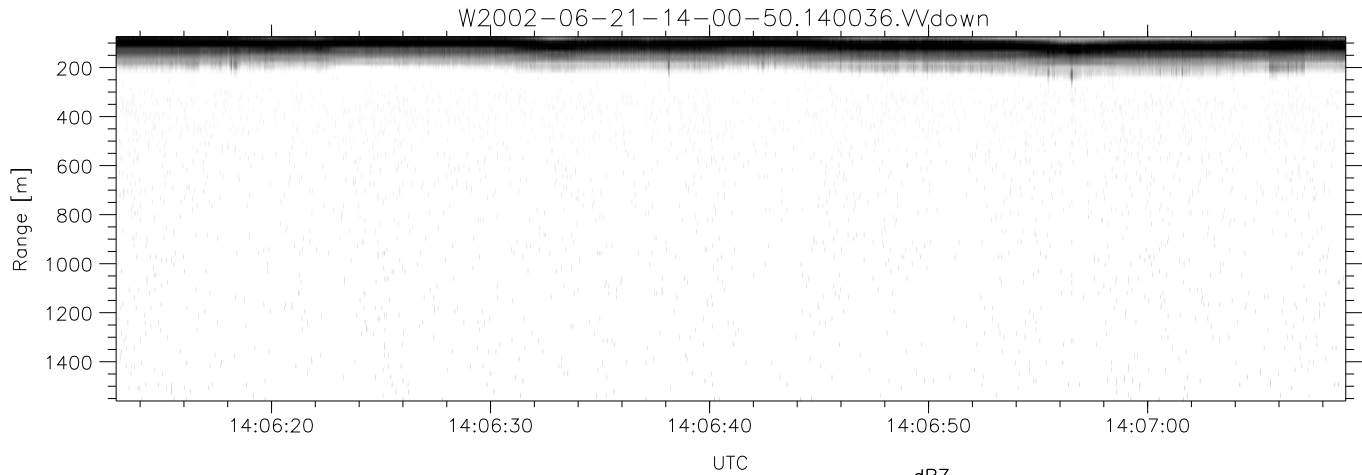
W2002-06-21-14-00-50 - PPMAG4
 IRIG:1,UTC: 14:00:36.77 to 14:31:39.35, Dur: 1863s
 TimeLngth: 1862.58s, TimeInt: 29ms (34.1pps)
 TimeCor=-13.0s, DSPDif(mn,min,mx):29,28,363
 PPS(min,max,std): 20,36,2.29
 Prof: 6973 to 70443, NumProf(t/r): 63470/17069
 ProcTime/Recs: 14:00:36-14:08:57/0-17068
 MxAcQtime: 33ms; DRate: 190.7KB/s; Flags: 0, 0, 0
 Pulse: 275ns, IFilt: 5.0MHz; ppPol: HH HV VV
 TxPol: HHVV, PRF: 20 10 20 10 kHz
 Range: Delay 75m, Spacing 15m, Gates 100
 Ave. Pulses: 84, Rng/Prof Aspect@90m/s: 5.7

	Min	Max	Mean	Std	Varc%
hhN(dB)	-68.12	-64.82	-66.30	-76.33	9.9
vvN(dB)	-67.29	-63.73	-65.31	-75.27	10.1
hhL(dB)	-17.20	-4.40	-7.36	-12.63	29.7
vvL(dB)	-9.32	-1.35	-4.99	-10.32	29.3
ppN(m/s)	-12.55	12.70	-0.08	4.16	
ppT(m/s)	-99.11	100.36	-0.66	32.88	
hh/vv(dB)	-NaN	43.07	13.09	30.89	6029
vh/hh(dB)	-37.10	-30.52	-34.15	-35.84	67.8
hv/vv(dB)	-NaN	-17.83	-44.19	-38.07	410.
hnjmp(dB)	-2.02	2.35	0.17	-8.37	14.0
vnjmp(dB)	-2.10	2.48	0.18	-8.33	14.1



IHOP 2002 (dual-antenna config, modes 1,3,4,7) Data (cal: 49.0,50.0)

	Min	Max	Mean	Std	Varc%	
W2002-06-21-14-00-50 - PPMAG4						
IRIG:1,UTC: 14:00:36.77 to 14:31:39.35, Dur: 1863s	hhN(dB)	-68.12	-64.82	-66.30	-76.33	9.9
TimeLngth: 1862.58s, TimeInt: 29ms (34.1pps)	vvN(dB)	-67.29	-63.73	-65.31	-75.27	10.1
TimeCor=-13.0s, DSPDif(mn,min,mx):29,28,363	hhL(dB)	-17.20	-4.40	-7.36	-12.63	29.7
PPS(min,max,std): 20,36,2.29	vvL(dB)	-9.32	-1.35	-4.99	-10.32	29.3
Prof: 6973 to 70443, NumProf(t/r): 63470/17069	ppN(m/s)	-12.55	12.70	-0.08	4.16	
ProcTime/Recs: 14:00:36-14:08:57/0-17068	ppT(m/s)	-99.11	100.36	-0.66	32.88	
MxAcQtime: 33ms; DRate: 190.7KB/s; Flags: 0, 0, 0	hh/vv(dB)	-NaN	43.07	13.09	30.89	6029
Pulse: 275ns, IFilt: 5.0MHz; ppPol: HH HV VV	vh/hh(dB)	-37.10	-30.52	-34.15	-35.84	67.8
TxPol: HHVV, PRF: 20 10 20 10 kHz	hv/vv(dB)	-NaN	-17.83	-44.19	-38.07	410.
Range: Delay 75m, Spacing 15m, Gates 100	hn_jmp(dB)	-2.02	2.35	0.17	-8.37	14.0
Ave. Pulses: 84, Rng/Prof Aspect@90m/s: 5.7	vn_jmp(dB)	-2.10	2.48	0.18	-8.33	14.1



IHOP 2002 (dual-antenna config, modes 1,3,4,7) Data (cal: 49.0,50.0)

W2002-06-21-14-00-50 - PPMAG4	Min	Max	Mean	Std	Varc%	
IRIG:1,UTC: 14:00:36.77 to 14:31:39.35, Dur: 1863s	hhN(dB)	-68.12	-64.82	-66.30	-76.33	9.9
TimeLngth: 1862.58s, TimeInt: 29ms (34.1pps)	vvN(dB)	-67.29	-63.73	-65.31	-75.27	10.1
TimeCor=-13.0s, DSPDif(mn,min,mx):29,28,363	hhL(dB)	-17.20	-4.40	-7.36	-12.63	29.7
PPS(min,max,std): 20,36,2.29	vvL(dB)	-9.32	-1.35	-4.99	-10.32	29.3
Prof: 6973 to 70443, NumProf(t/r): 63470/17069	ppN(m/s)	-12.55	12.70	-0.08	4.16	
ProcTime/Recs: 14:00:36-14:08:57/0-17068	ppT(m/s)	-99.11	100.36	-0.66	32.88	
MxACQtime: 33ms; DRate: 190.7KB/s; Flags: 0, 0, 0	hh/vv(dB)	-NaN	43.07	13.09	30.89	6029
Pulse: 275ns, IFfilt: 5.0MHz; ppPol: HH HV VV	vh/hh(dB)	-37.10	-30.52	-34.15	-35.84	67.8
TxPol: HHVV, PRF: 20 10 20 10 kHz	hv/vv(dB)	-NaN	-17.83	-44.19	-38.07	410.
Range: Delay 75m, Spacing 15m, Gates 100	hnjmp(dB)	-2.02	2.35	0.17	-8.37	14.0
Ave. Pulses: 84, Rng/Prof Aspect@90m/s: 5.7	vnjmp(dB)	-2.10	2.48	0.18	-8.33	14.1