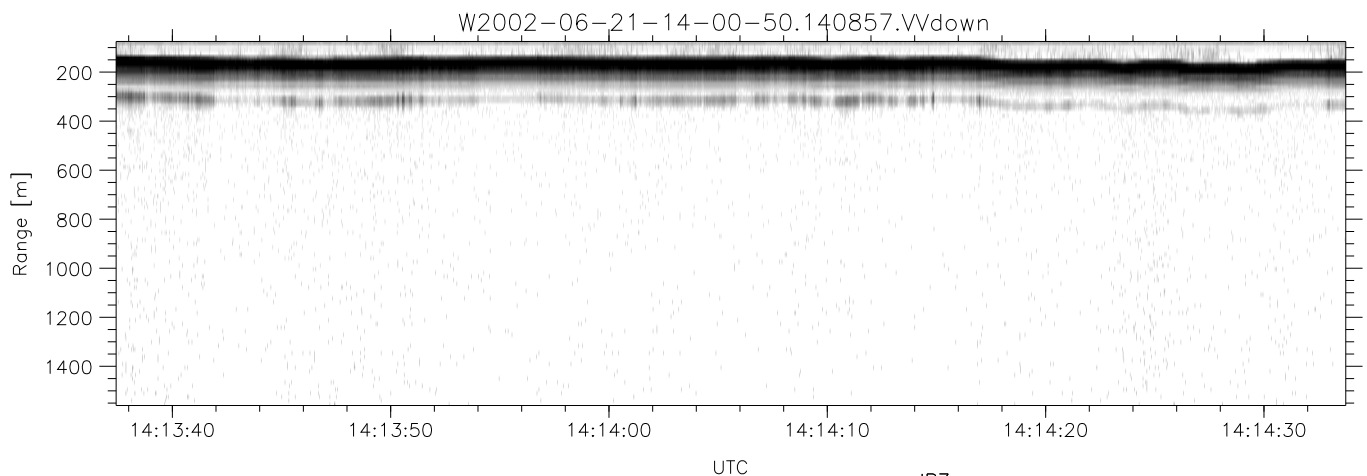
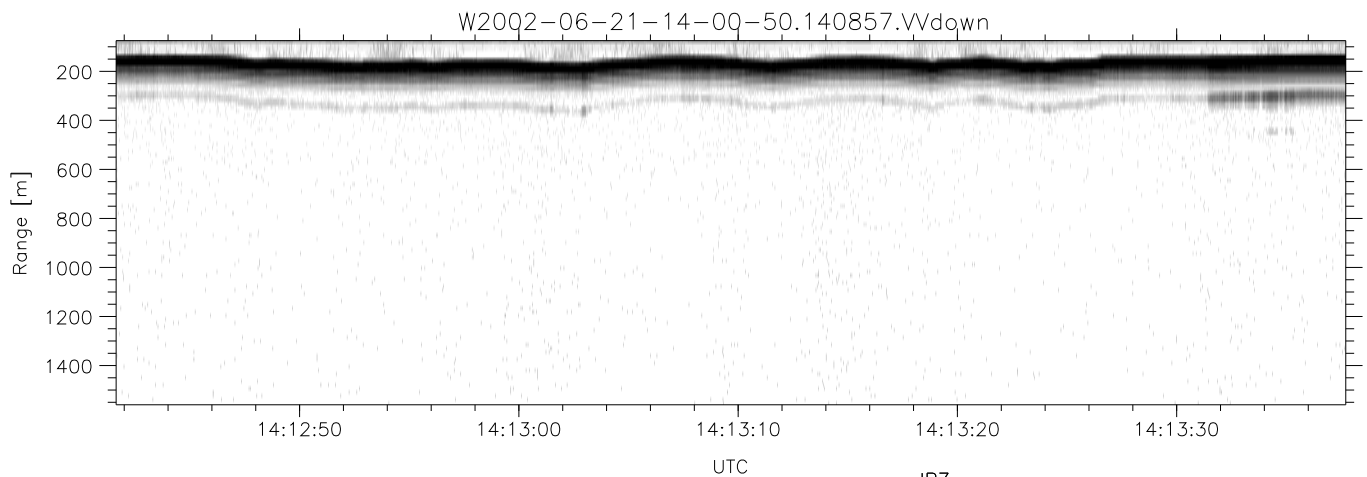
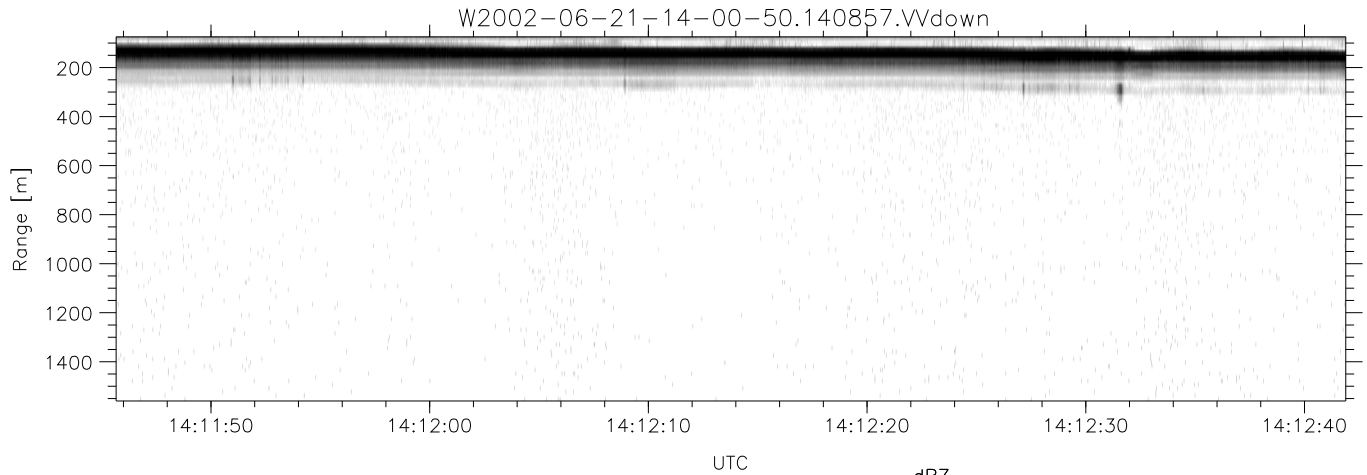


IHOP 2002 (dual-antenna config, modes 1,3,4,7) Data (cal: 49.0,50.0)

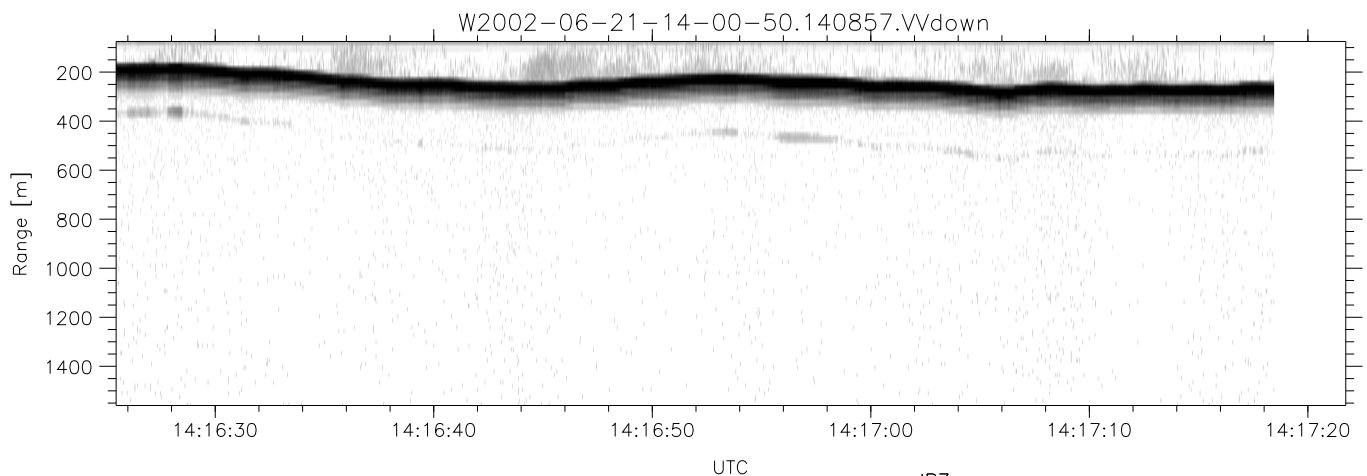
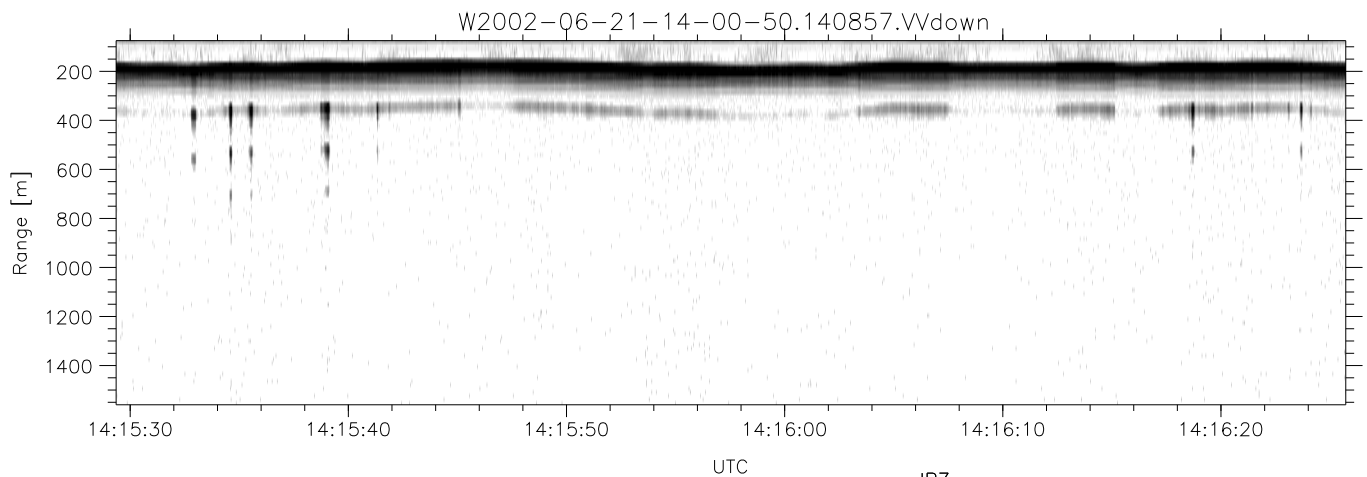
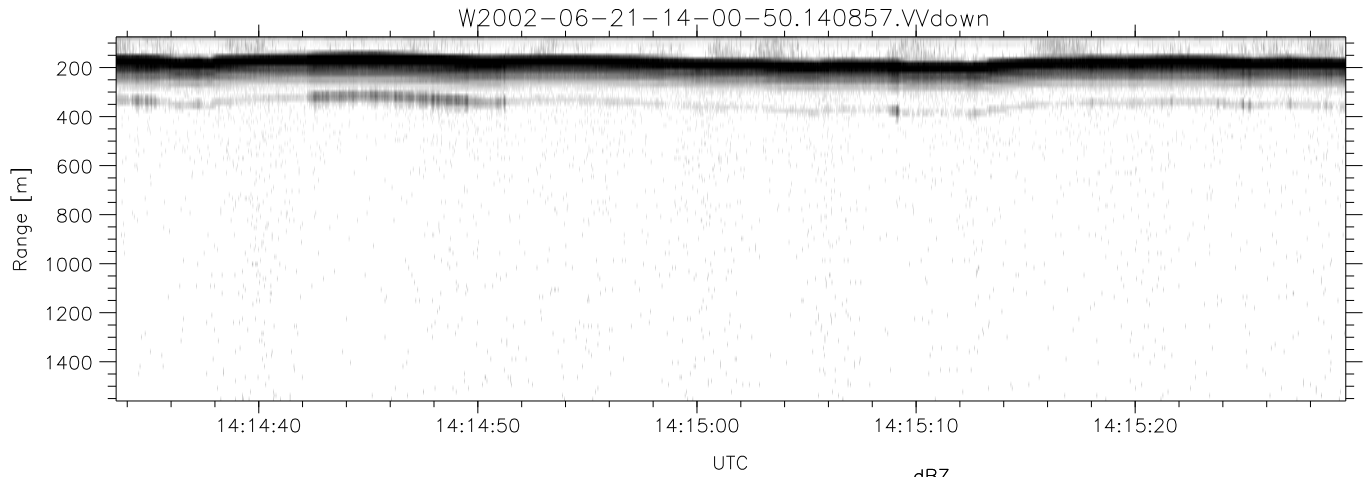
W2002-06-21-14-00-50 - PPMAG4
 IRIG:1,UTC: 14:00:36.77 to 14:31:39.35, Dur: 1863s
 TimeLngth: 1862.58s, TimeInt: 29ms (34.1pps)
 TimeCor=-13.0s, DSPDif(mn,min,mx):29,28,367
 PPS(min,max,std): 23,36,2.40
 Prof: 6973 to 70443, NumProf(t/r): 63470/17069
 ProcTime/Recs: 14:08:57-14:17:18/17069-34137
 MxACQtime: 33ms; DRate: 190.7KB/s; Flags: 0, 0, 0
 Pulse: 275ns, IFfilt: 5.0MHz; ppPol: HH HV VV
 TxPol: HHVV, PRF: 20 10 20 10 kHz
 Range: Delay 75m, Spacing 15m, Gates 100
 Ave. Pulses: 84, Rng/Prof Aspect@90m/s: 5.7

	Min	Max	Mean	Std	Varc%
hhN(dB)	-68.14	-64.68	-66.34	-76.37	9.9
vvN(dB)	-67.07	-63.80	-65.35	-75.32	10.1
hhL(dB)	-15.17	-5.56	-8.29	-17.45	12.1
vvL(dB)	-9.57	-2.78	-5.74	-11.09	29.1
ppN(m/s)	-12.82	12.21	-0.07	4.14	
ppT(m/s)	-101.2	96.42	-0.54	32.74	
hh/vv(dB)	-NaN	34.13	-NaN	29.31	-300
vh/hh(dB)	-99.00	-99.00	-99.00	-99.00	-99.
hv/vv(dB)	-NaN	-30.22	-49.20	-45.21	250.
hnjmp(dB)	-2.18	2.11	-0.09	-8.69	13.8
vnjmp(dB)	-2.64	2.01	-0.10	-8.60	14.1



IHOP 2002 (dual-antenna config, modes 1,3,4,7) Data (cal: 49.0,50.0)

W2002-06-21-14-00-50 - PPMAG4	Min	Max	Mean	Std	Varc%	
IRIG:1,UTC: 14:00:36.77 to 14:31:39.35, Dur: 1863s	hhN (dB)	-68.14	-64.68	-66.34	-76.37	9.9
TimeLngth: 1862.58s, TimeInt: 29ms (34.1pps)	vvN (dB)	-67.07	-63.80	-65.35	-75.32	10.1
TimeCor=-13.0s, DSPDif(mn,min,mx):29,28,367	hhL (dB)	-15.17	-5.56	-8.29	-17.45	12.1
PPS(min,max,std): 23,36,2.40	vvL (dB)	-9.57	-2.78	-5.74	-11.09	29.1
Prof: 6973 to 70443, NumProf(t/r): 63470/17069	ppN (m/s)	-12.82	12.21	-0.07	4.14	
ProcTime/Recs: 14:08:57-14:17:18/17069-34137	ppT (m/s)	-101.2	96.42	-0.54	32.74	
MxACQtime: 33ms; DRate: 190.7KB/s; Flags: 0, 0, 0	hh/vv (dB)	-NaN	34.13	-NaN	29.31	-300
Pulse: 275ns, IFfilt: 5.0MHz; ppPol: HH HV VV	vh/hh (dB)	-99.00	-99.00	-99.00	-99.00	-99.
TxPol: HHVV, PRF: 20 10 20 10 kHz	hv/vv (dB)	-NaN	-30.22	-49.20	-45.21	250.
Range: Delay 75m, Spacing 15m, Gates 100	hn/jmp (dB)	-2.18	2.11	-0.09	-8.69	13.8
Ave. Pulses: 84, Rng/Prof Aspect@90m/s: 5.7	vn/jmp (dB)	-2.64	2.01	-0.10	-8.60	14.1



IHOP 2002 (dual-antenna config, modes 1,3,4,7) Data (cal: 49.0,50.0)

W2002-06-21-14-00-50 - PPMAG4
 IRIG:1,UTC: 14:00:36.77 to 14:31:39.35, Dur: 1863s
 TimeLngth: 1862.58s, TimeInt: 29ms (34.1pps)
 TimeCor=-13.0s, DSPDif(mn,min,mx):29,28,367
 PPS(min,max,std): 23,36,2.40
 Prof: 6973 to 70443, NumProf(t/r): 63470/17069
 ProcTime/Recs: 14:08:57-14:17:18/17069-34137
 MxACQtime: 33ms; DRate: 190.7KB/s; Flags: 0, 0, 0
 Pulse: 275ns, IFilt: 5.0MHz; ppPol: HH HV VV
 TxPol: HHVV, PRF: 20 10 20 10 kHz
 Range: Delay 75m, Spacing 15m, Gates 100
 Ave. Pulses: 84, Rng/Prof Aspect@90m/s: 5.7

	Min	Max	Mean	Std	Varc%
hhN(dB)	-68.14	-64.68	-66.34	-76.37	9.9
vvN(dB)	-67.07	-63.80	-65.35	-75.32	10.1
hhL(dB)	-15.17	-5.56	-8.29	-17.45	12.1
vvL(dB)	-9.57	-2.78	-5.74	-11.09	29.1
ppN(m/s)	-12.82	12.21	-0.07	4.14	
ppT(m/s)	-101.2	96.42	-0.54	32.74	
hh/vv(dB)	-NaN	34.13	-NaN	29.31	-300
vh/hh(dB)	-99.00	-99.00	-99.00	-99.00	-99.
hv/vv(dB)	-NaN	-30.22	-49.20	-45.21	250.
hnjmp(dB)	-2.18	2.11	-0.09	-8.69	13.8
vnjmp(dB)	-2.64	2.01	-0.10	-8.60	14.1