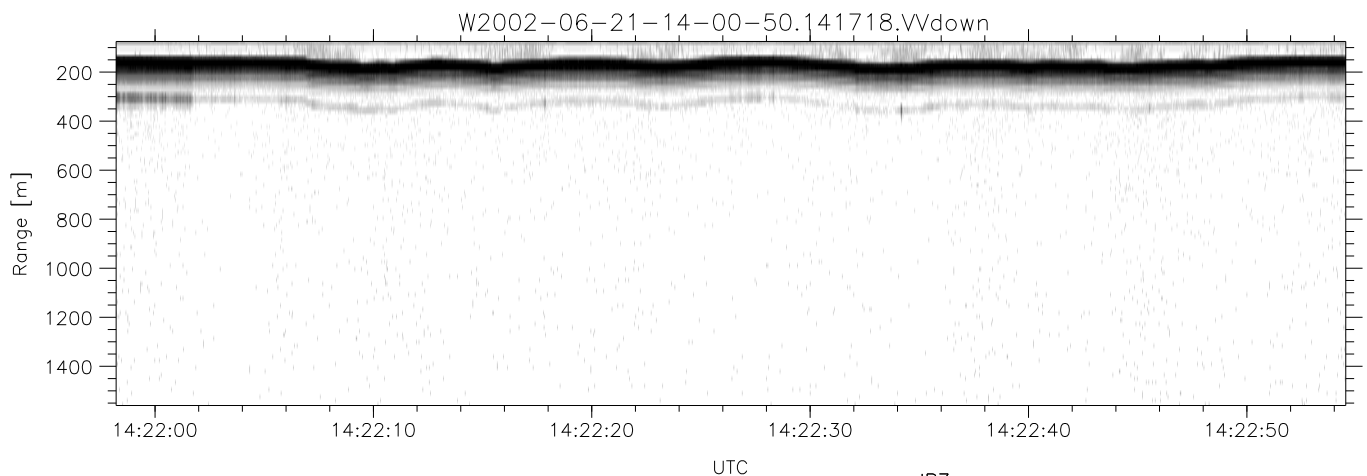
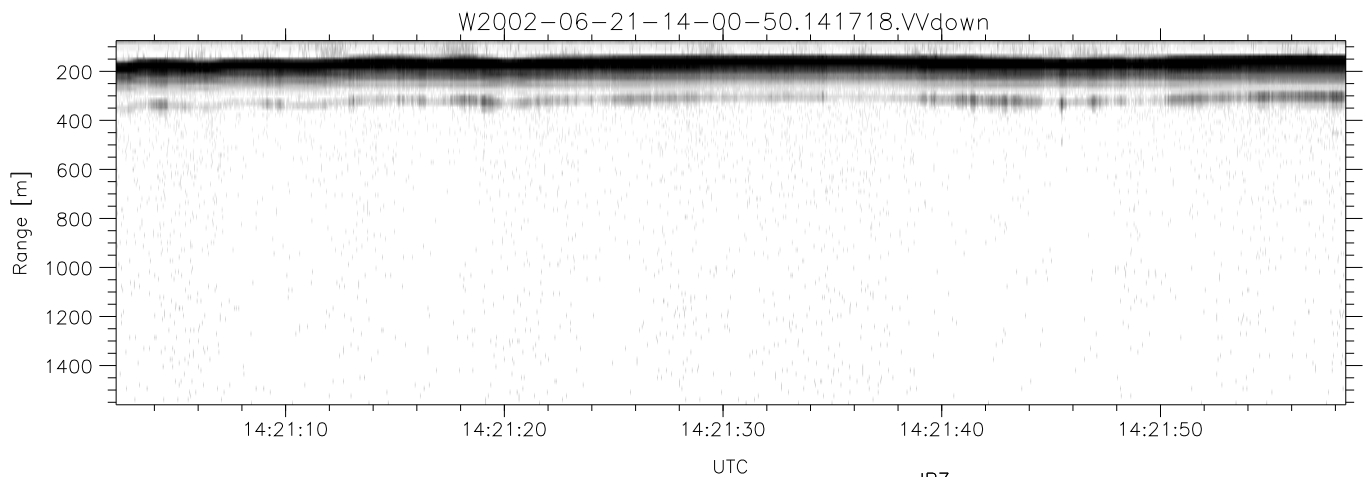
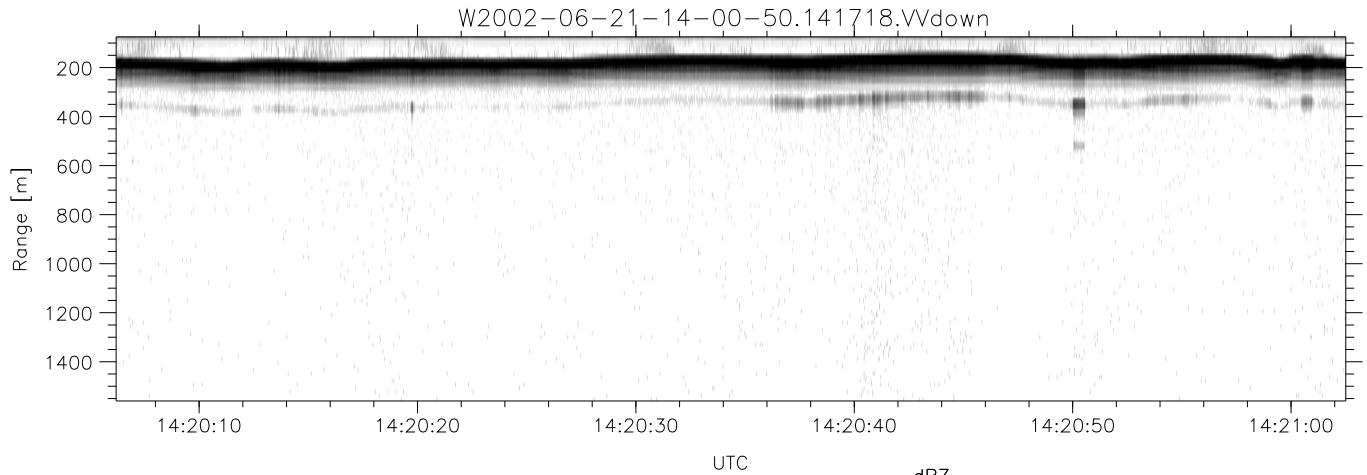


IHOP 2002 (dual-antenna config, modes 1,3,4,7) Data (cal: 49.0,50.0)

W2002-06-21-14-00-50 - PPMAG4  
 IRIG:1,UTC: 14:00:36.77 to 14:31:39.35, Dur: 1863s  
 TimeLngth: 1862.58s, TimeInt: 29ms (34.1pps)  
 TimeCor=-13.0s, DSPDif(mn,min,mx):29,28,375  
 PPS(min,max,std): 23,36,2.32  
 Prof: 6973 to 70443, NumProf(t/r): 63470/17069  
 ProcTime/Recs: 14:17:18-14:25:39/34138-51206  
 MxACQtime: 33ms; DRate: 190.7KB/s; Flags: 0, 0, 0  
 Pulse: 275ns, IFfilt: 5.0MHz; ppPol: HH HV VV  
 TxPol: HHVV, PRF: 20 10 20 10 kHz  
 Range: Delay 75m, Spacing 15m, Gates 100  
 Ave. Pulses: 84, Rng/Prof Aspect@90m/s: 5.7

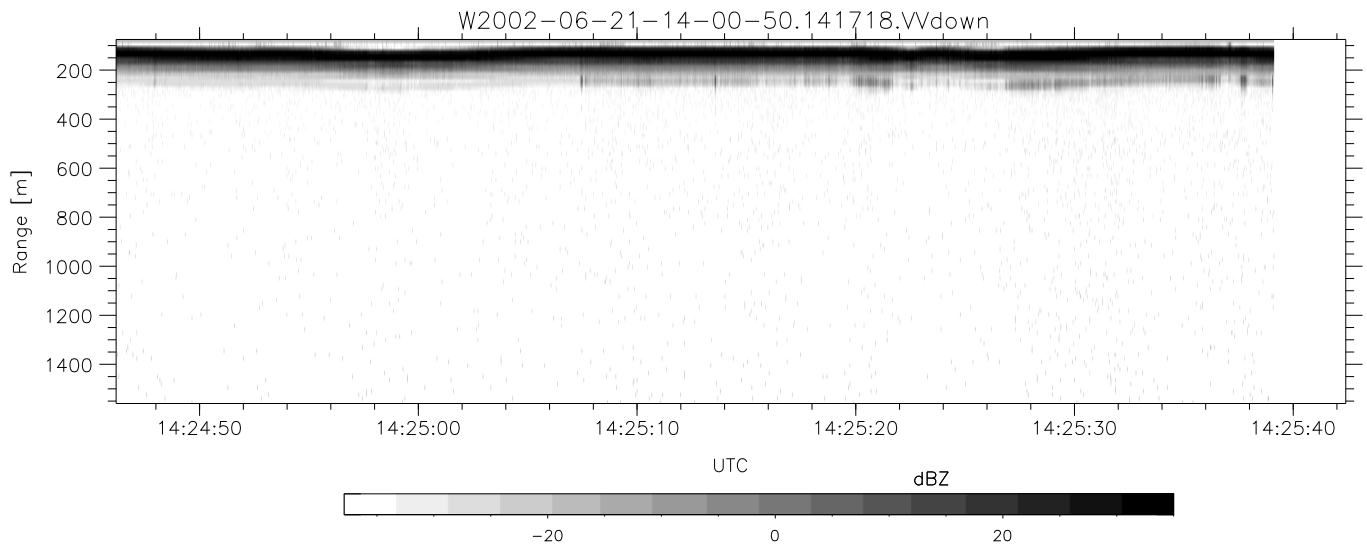
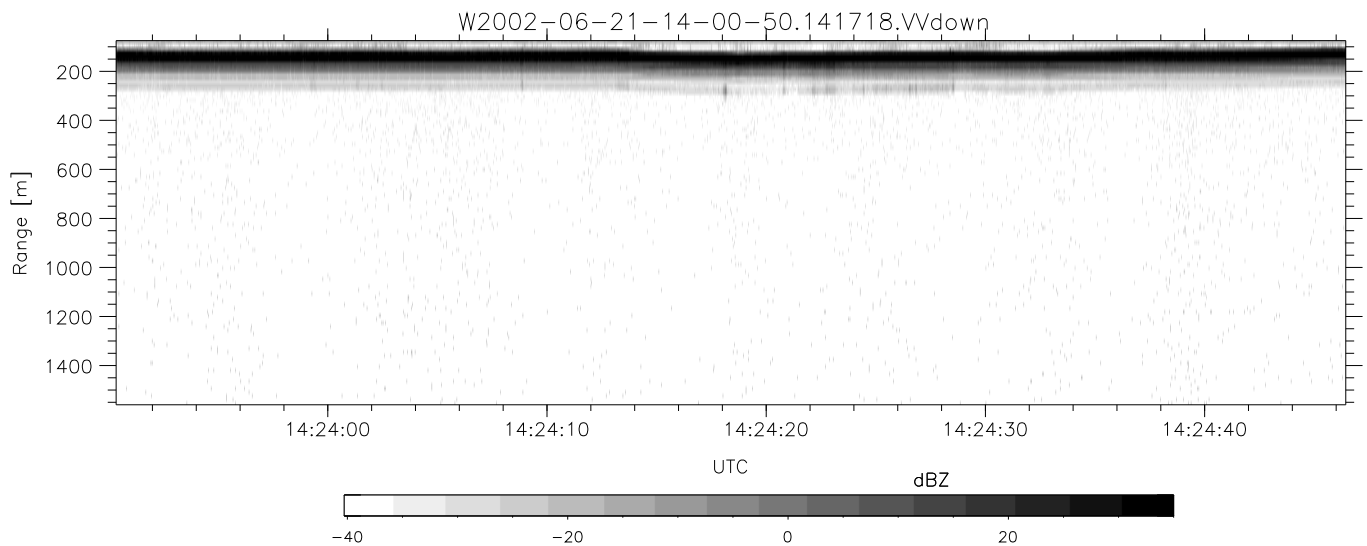
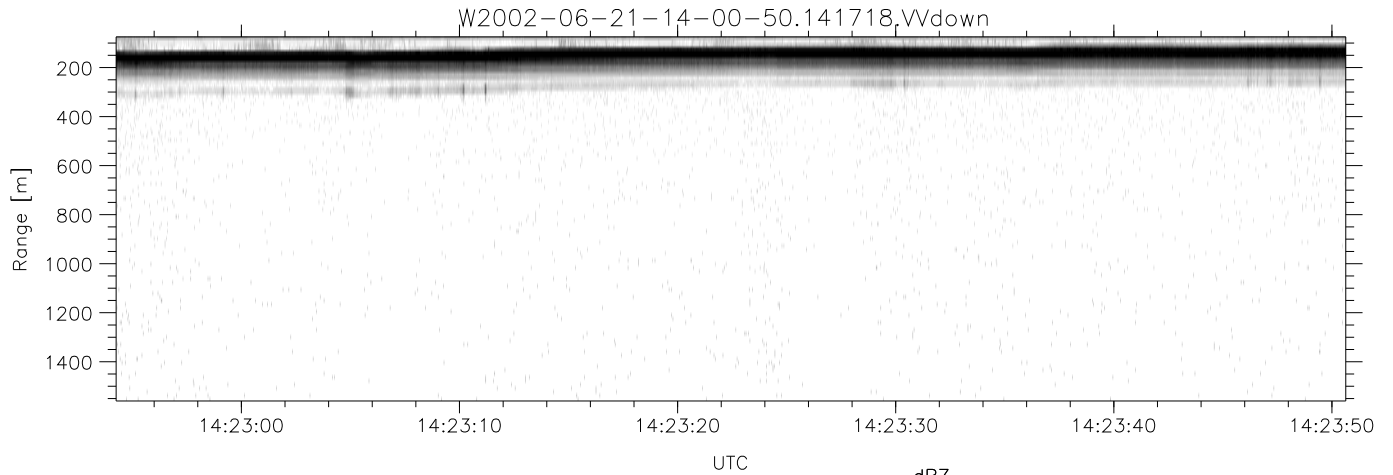
	Min	Max	Mean	Std	Varc%
hhN(dB)	-68.36	-64.86	-66.36	-76.40	9.9
vvN(dB)	-67.15	-63.77	-65.38	-75.27	10.3
hhL(dB)	-13.25	-6.51	-8.02	-17.31	11.8
vvL(dB)	-8.54	-2.84	-5.62	-10.99	29.0
ppN(m/s)	-12.80	12.62	0.02	4.14	
ppT(m/s)	-101.1	99.67	0.16	32.68	
hh/vv(dB)	-NaN	33.44	-NaN	34.29	-532
vh/hh(dB)	-40.34	-10.03	-16.89	-14.13	189.
hv/vv(dB)	-NaN	-30.01	-50.45	-45.79	292.
hnjmp(dB)	-2.11	2.28	0.17	-8.43	13.8
vnjmp(dB)	-2.07	2.47	0.19	-8.22	14.4



IHOP 2002 (dual-antenna config, modes 1,3,4,7) Data (cal: 49.0,50.0)

W2002-06-21-14-00-50 - PPMAG4  
 IRIG:1,UTC: 14:00:36.77 to 14:31:39.35, Dur: 1863s  
 TimeLngth: 1862.58s, TimeInt: 29ms (34.1pps)  
 TimeCor=-13.0s, DSPDif(mn,min,mx):29,28,375  
 PPS(min,max,std): 23,36,2.32  
 Prof: 6973 to 70443, NumProf(t/r): 63470/17069  
 ProcTime/Recs: 14:17:18-14:25:39/34138-51206  
 MxACQtime: 33ms; DRate: 190.7KB/s; Flags: 0, 0, 0  
 Pulse: 275ns, IFfilt: 5.0MHz; ppPol: HH HV VV  
 TxPol: HHVV, PRF: 20 10 20 10 kHz  
 Range: Delay 75m, Spacing 15m, Gates 100  
 Ave. Pulses: 84, Rng/Prof Aspect@90m/s: 5.7

	Min	Max	Mean	Std	Varc%
hhN(dB)	-68.36	-64.86	-66.36	-76.40	9.9
vvN(dB)	-67.15	-63.77	-65.38	-75.27	10.3
hhL(dB)	-13.25	-6.51	-8.02	-17.31	11.8
vvL(dB)	-8.54	-2.84	-5.62	-10.99	29.0
ppN(m/s)	-12.80	12.62	0.02	4.14	
ppT(m/s)	-101.1	99.67	0.16	32.68	
hh/vv(dB)	-NaN	33.44	-NaN	34.29	-532
vh/hh(dB)	-40.34	-10.03	-16.89	-14.13	189.
hv/vv(dB)	-NaN	-30.01	-50.45	-45.79	292.
hnjmp(dB)	-2.11	2.28	0.17	-8.43	13.8
vnjmp(dB)	-2.07	2.47	0.19	-8.22	14.4



IHOP 2002 (dual-antenna config, modes 1,3,4,7) Data (cal: 49.0,50.0)

W2002-06-21-14-00-50 - PPMAG4	Min	Max	Mean	Std	Varc%	
IRIG:1,UTC: 14:00:36.77 to 14:31:39.35, Dur: 1863s	hhN (dB)	-68.36	-64.86	-66.36	-76.40	9.9
TimeLngth: 1862.58s, TimeInt: 29ms (34.1pps)	vvN (dB)	-67.15	-63.77	-65.38	-75.27	10.3
TimeCor=-13.0s, DSPDif(mn,min,mx):29,28,375	hhL (dB)	-13.25	-6.51	-8.02	-17.31	11.8
PPS(min,max,std): 23,36,2.32	vvL (dB)	-8.54	-2.84	-5.62	-10.99	29.0
Prof: 6973 to 70443, NumProf(t/r): 63470/17069	ppN (m/s)	-12.80	12.62	0.02	4.14	
ProcTime/Recs: 14:17:18-14:25:39/34138-51206	ppT (m/s)	-101.1	99.67	0.16	32.68	
MxACQtime: 33ms; DRate: 190.7KB/s; Flags: 0, 0, 0	hh/vv (dB)	-NaN	33.44	-NaN	34.29	-532
Pulse: 275ns, IFilt: 5.0MHz; ppPol: HH HV VV	vh/hh (dB)	-40.34	-10.03	-16.89	-14.13	189.
TxPol: HHVV, PRF: 20 10 20 10 kHz	hv/vv (dB)	-NaN	-30.01	-50.45	-45.79	292.
Range: Delay 75m, Spacing 15m, Gates 100	hn_jmp (dB)	-2.11	2.28	0.17	-8.43	13.8
Ave. Pulses: 84, Rng/Prof Aspect@90m/s: 5.7	vn_jmp (dB)	-2.07	2.47	0.19	-8.22	14.4