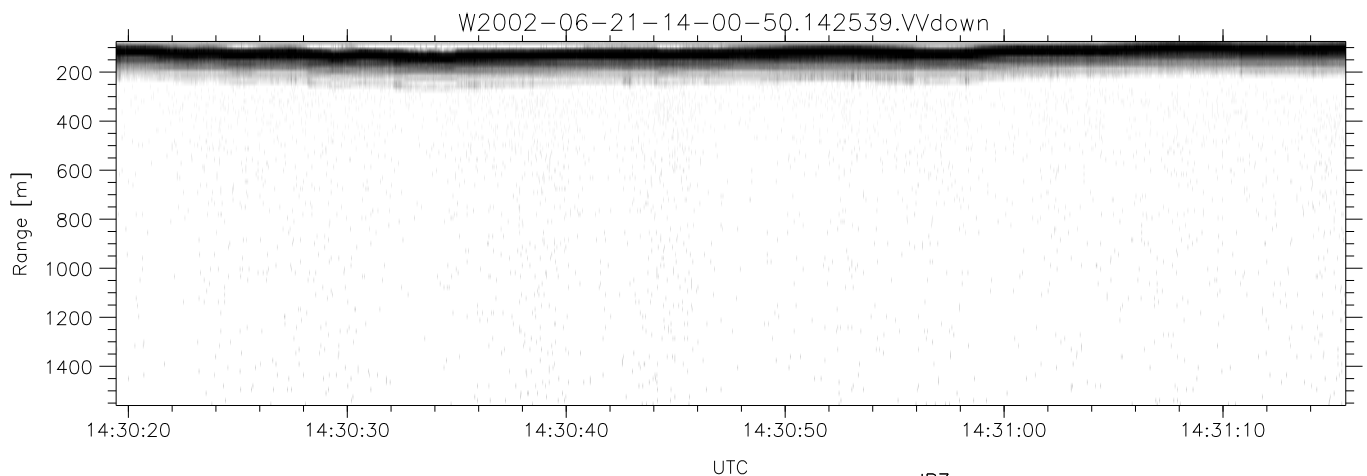
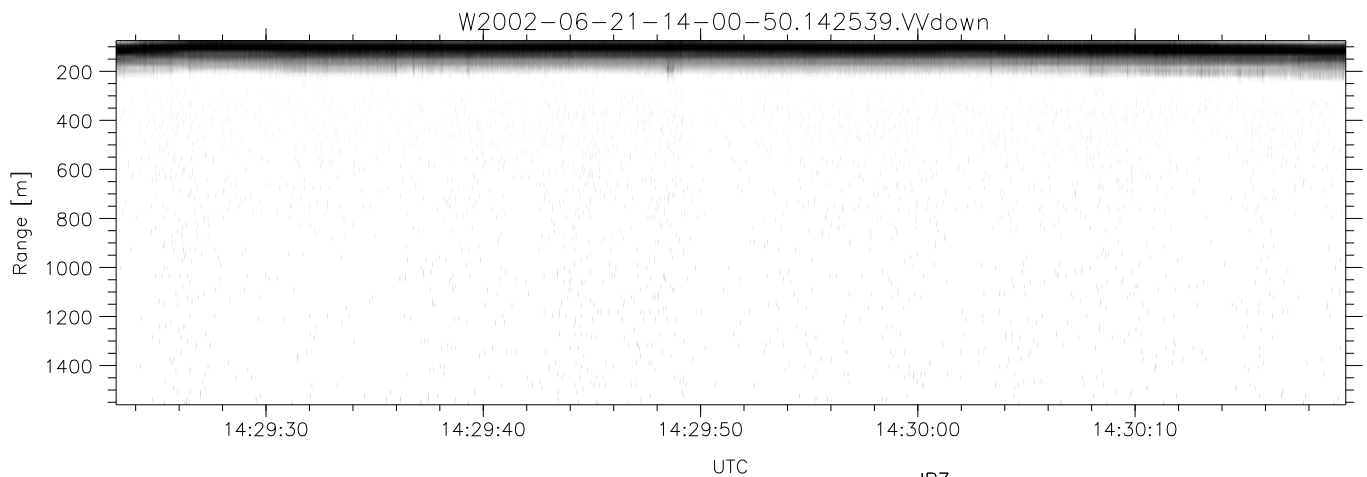
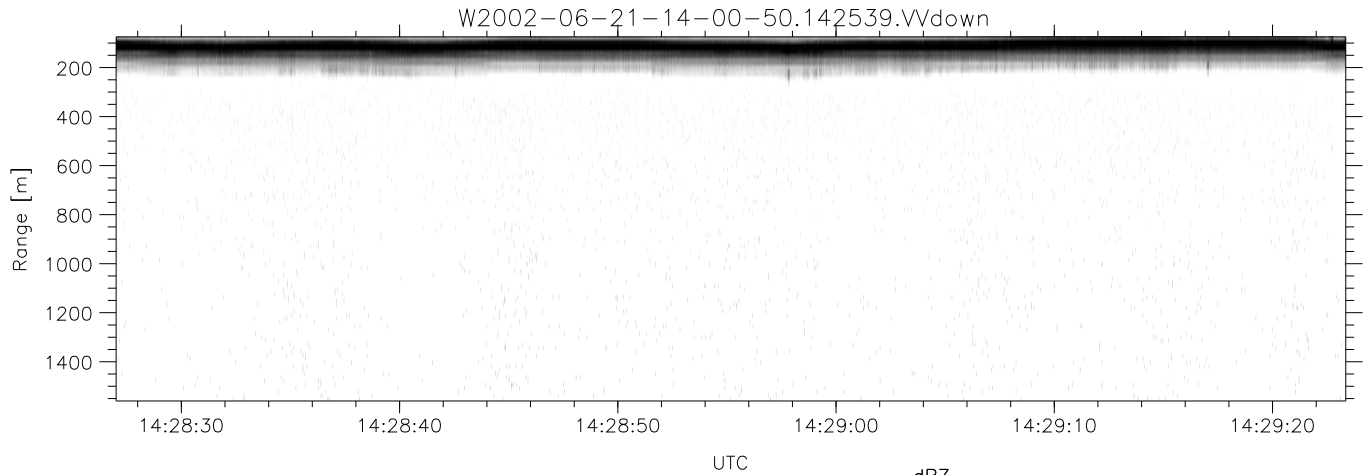


IHOP 2002 (dual-antenna config, modes 1,3,4,7) Data (cal: 49.0,50.0)

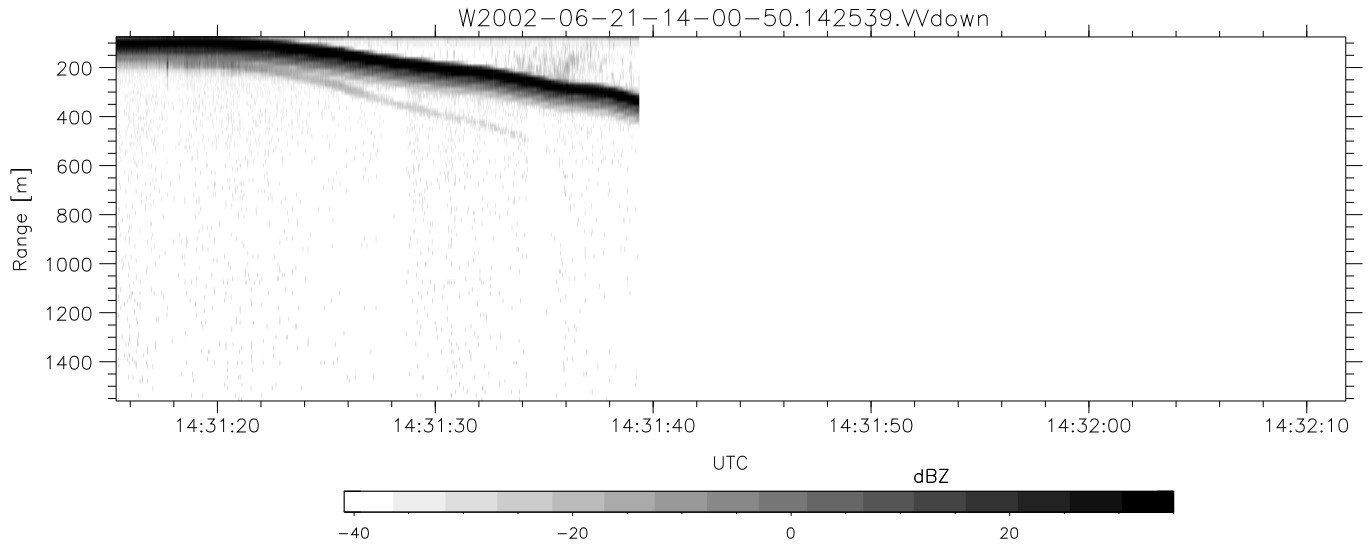
W2002-06-21-14-00-50 - PPMAG4
 IRIG:1,UTC: 14:00:36.77 to 14:31:39.35, Dur: 1863s
 TimeLngth: 1862.58s, TimeInt: 29ms (34.1pps)
 TimeCor=-13.0s, DSPDif(mn,min,mx):29,28,376
 PPS(min,max,std): 23,36,2.38
 Prof: 6973 to 70443, NumProf(t/r): 63470/12263
 ProcTime/Recs: 14:25:39-14:31:39/51207-63469
 MxACQtime: 33ms; DRate: 190.7KB/s; Flags: 0, 0, 0
 Pulse: 275ns, IFfilt: 5.0MHz; ppPol: HH HV VV
 TxPol: HHVV, PRF: 20 10 20 10 kHz
 Range: Delay 75m, Spacing 15m, Gates 100
 Ave. Pulses: 84, Rng/Prof Aspect@90m/s: 5.7

	Min	Max	Mean	Std	Varc%
hhN(dB)	-68.15	-64.98	-66.41	-76.38	10.1
vvN(dB)	-67.25	-63.74	-65.41	-75.35	10.1
hhL(dB)	-17.97	-5.66	-8.03	-17.13	12.3
vvL(dB)	-11.01	-2.86	-5.88	-11.34	28.4
ppN(m/s)	-12.60	12.28	0.04	4.11	
ppT(m/s)	-99.52	97.04	0.34	32.46	
hh/vv(dB)	-NaN	34.53	-NaN	26.38	-412
vh/hh(dB)	-99.00	-99.00	-99.00	-99.00	-99.
hv/vv(dB)	-NaN	-22.41	-42.46	-40.66	151.
hnjmp(dB)	-2.14	1.92	-0.10	-8.66	13.9
vnjmp(dB)	-2.33	1.98	-0.11	-8.66	14.0



IHOP 2002 (dual-antenna config, modes 1,3,4,7) Data (cal: 49.0,50.0)

	Min	Max	Mean	Std	Varc%	
W2002-06-21-14-00-50 - PPMAG4						
IRIG:1,UTC: 14:00:36.77 to 14:31:39.35, Dur: 1863s	hhN (dB)	-68.15	-64.98	-66.41	-76.38	10.1
TimeLngth: 1862.58s, TimeInt: 29ms (34.1pps)	vvN (dB)	-67.25	-63.74	-65.41	-75.35	10.1
TimeCor=-13.0s, DSPDif(mn,min,mx):29,28,376	hhL (dB)	-17.97	-5.66	-8.03	-17.13	12.3
PPS(min,max,std): 23,36,2.38	vvL (dB)	-11.01	-2.86	-5.88	-11.34	28.4
Prof: 6973 to 70443, NumProf(t/r): 63470/12263	ppN (m/s)	-12.60	12.28	0.04	4.11	
ProcTime/Recs: 14:25:39-14:31:39/51207-63469	ppT (m/s)	-99.52	97.04	0.34	32.46	
MxACQtime: 33ms; DRate: 190.7KB/s; Flags: 0, 0, 0	hh/vv (dB)	-NaN	34.53	-NaN	26.38	-412
Pulse: 275ns, IFfilt: 5.0MHz; ppPol: HH HV VV	vh/hh (dB)	-99.00	-99.00	-99.00	-99.00	-99.
TxPol: HHVV, PRF: 20 10 20 10 kHz	hv/vv (dB)	-NaN	-22.41	-42.46	-40.66	151.
Range: Delay 75m, Spacing 15m, Gates 100	hn_jmp (dB)	-2.14	1.92	-0.10	-8.66	13.9
Ave. Pulses: 84, Rng/Prof Aspect@90m/s: 5.7	vn_jmp (dB)	-2.33	1.98	-0.11	-8.66	14.0



IHOP 2002 (dual-antenna config, modes 1,3,4,7) Data (cal: 49.0,50.0)

W2002-06-21-14-00-50 - PPMAG4						
IRIG:1,UTC: 14:00:36.77 to 14:31:39.35, Dur: 1863s	hhN(dB)	Min	Max	Mean	Std	Varc%
TimeLngth: 1862.58s, TimeInt: 29ms (34.1pps)	vvN(dB)	-68.15	-64.98	-66.41	-76.38	10.1
TimeCor=-13.0s, DSPDif(mn,min,mx):29,28,376	hhL(dB)	-67.25	-63.74	-65.41	-75.35	10.1
PPS(min,max,std): 23,36,2.38	vvL(dB)	-17.97	-5.66	-8.03	-17.13	12.3
Prof: 6973 to 70443, NumProf(t/r): 63470/12263	ppN(m/s)	-11.01	-2.86	-5.88	-11.34	28.4
ProcTime/Recs: 14:25:39-14:31:39/51207-63469	ppT(m/s)	-12.60	12.28	0.04	4.11	
MxACQtime: 33ms; DRate: 190.7KB/s; Flags: 0, 0, 0	hh/vv(dB)	-99.52	97.04	0.34	32.46	
Pulse: 275ns, IFilt: 5.0MHz; ppPol: HH HV VV	vh/vv(dB)	-NaN	34.53	-NaN	26.38	-412
TxPol: HHVV, PRF: 20 10 20 10 kHz	hh/hh(dB)	-99.00	-99.00	-99.00	-99.00	-99.
Range: Delay 75m, Spacing 15m, Gates 100	hv/vv(dB)	-NaN	-22.41	-42.46	-40.66	151.
Ave. Pulses: 84, Rng/Prof Aspect@90m/s: 5.7	hn/jmp(dB)	-2.14	1.92	-0.10	-8.66	13.9
	vn/jmp(dB)	-2.33	1.98	-0.11	-8.66	14.0