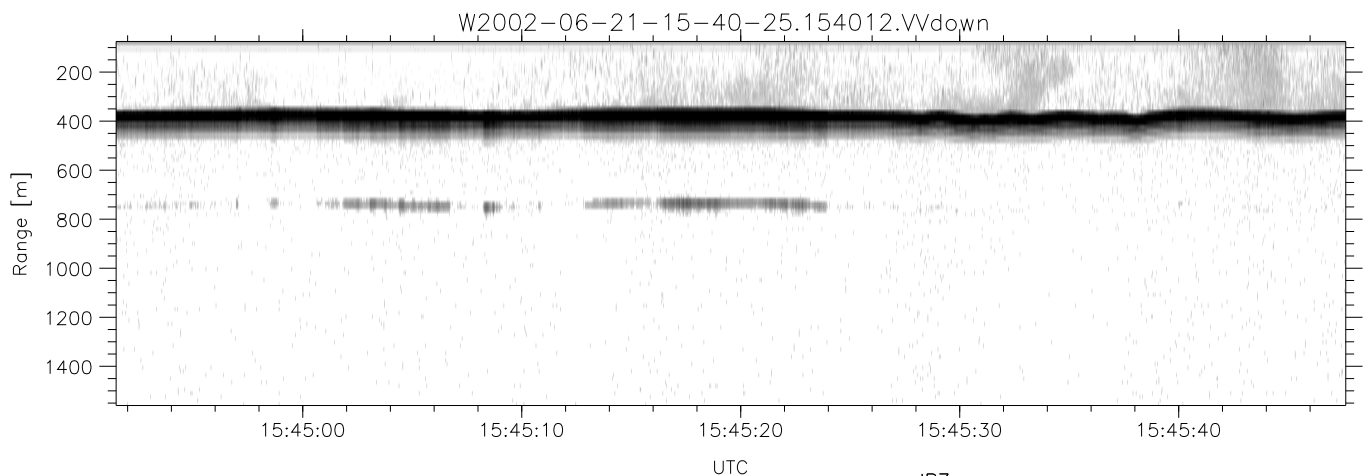
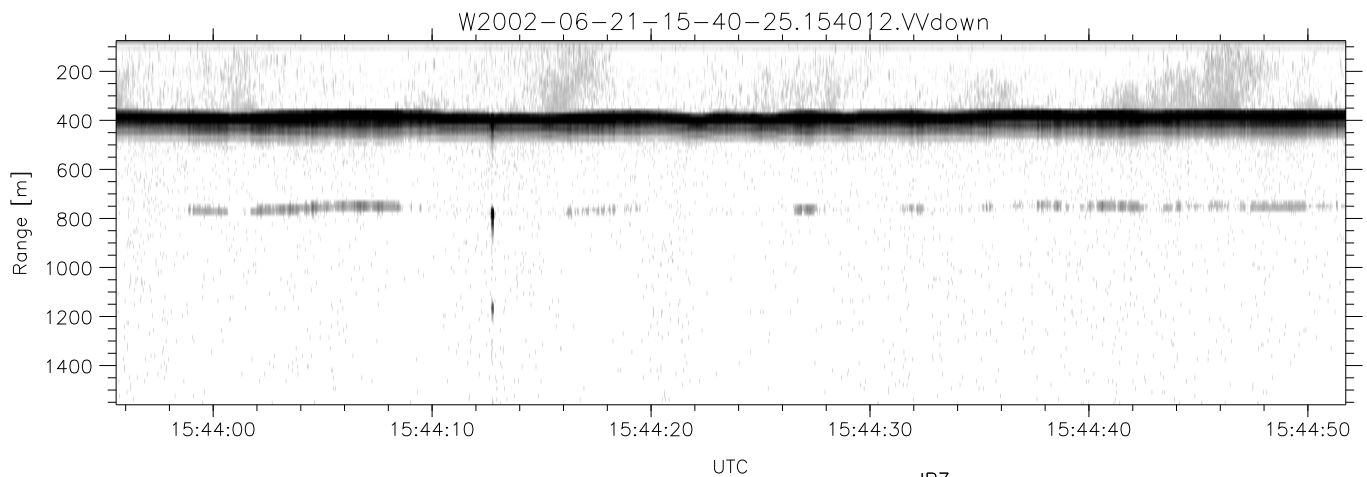
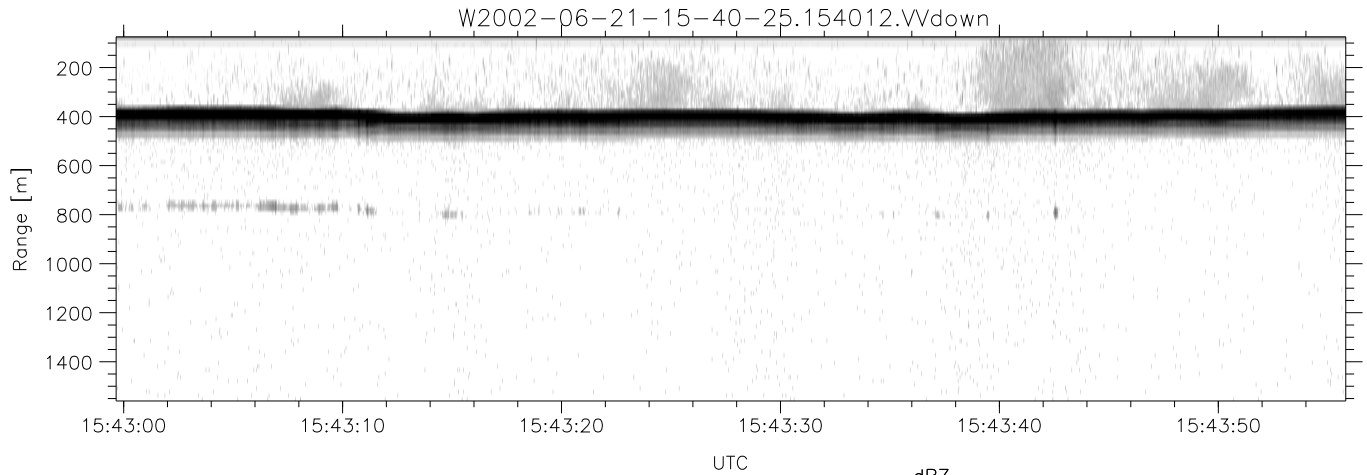


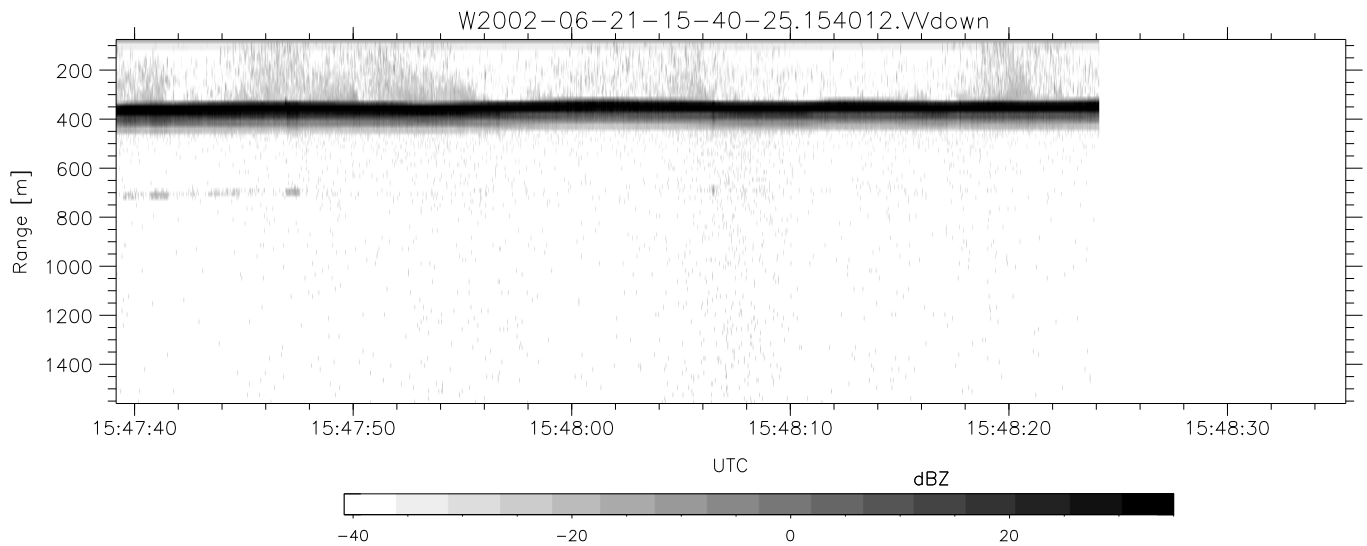
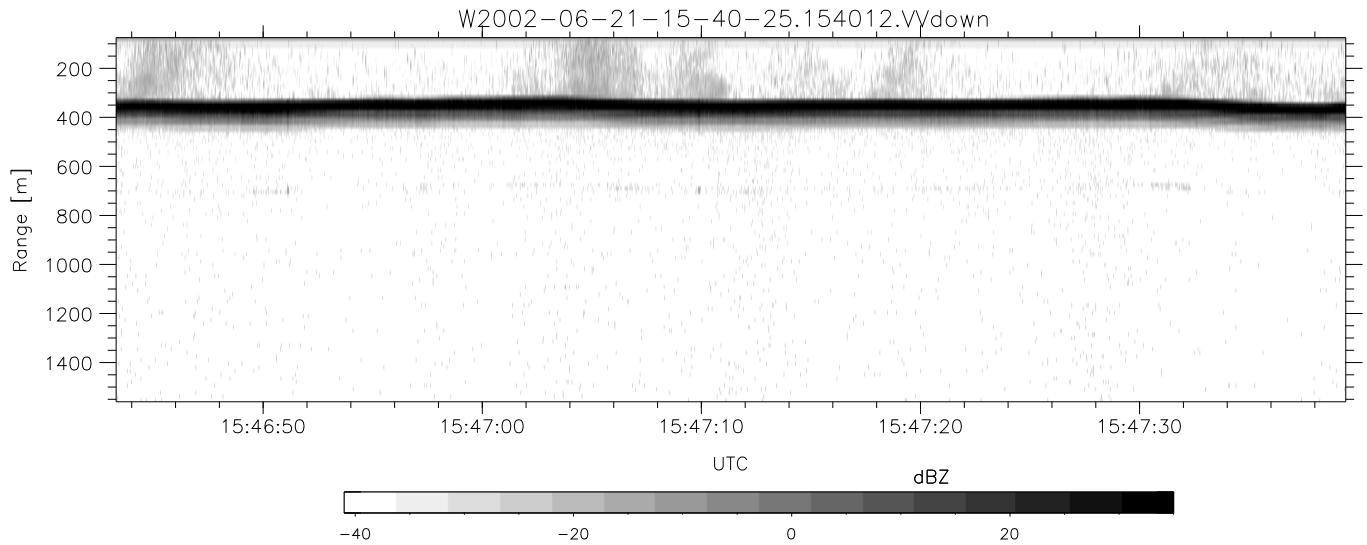
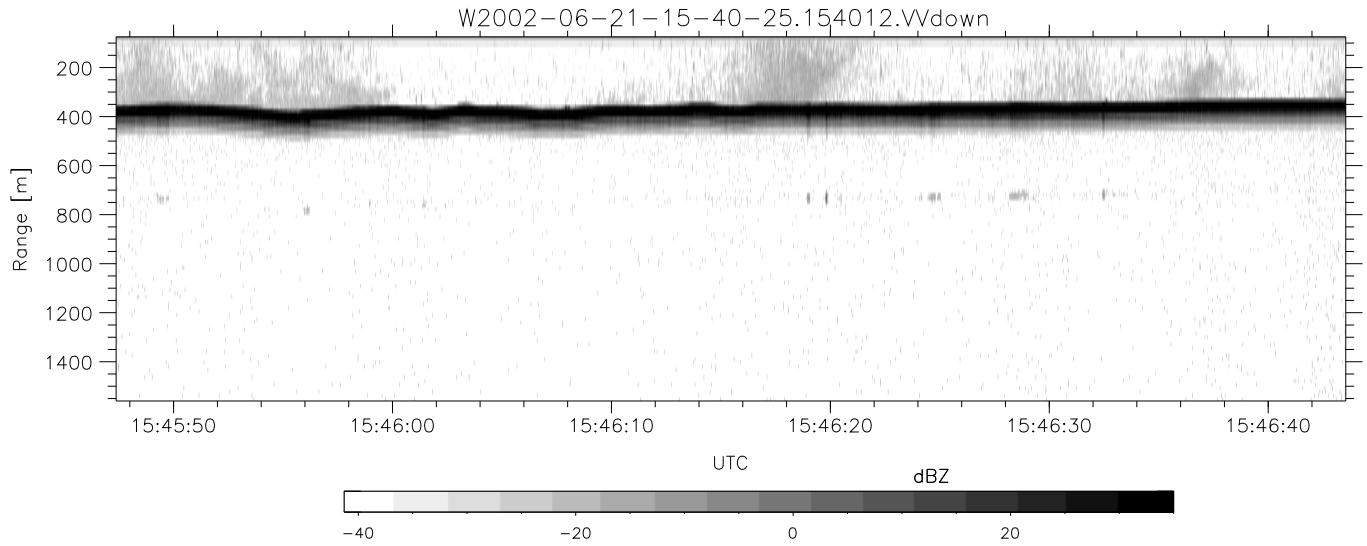
IHOP 2002 (dual-antenna config, modes 1,3,4,7) Data (cal: 49.0,50.0)

W2002-06-21-15-40-25 - PPMAG4	Min	Max	Mean	Std	Varc%	
IRIG:1,UTC: 15:40:12.02 to 16:35:14.72, Dur: 3302s	hhN (dB)	-67.91	-61.65	-66.12	-74.89	13.2
TimeLngth: 3302.70s, TimeInt: 28ms (34.6pps)	vvN (dB)	-66.85	-60.61	-65.09	-73.96	12.9
TimeCor=-13.0s, DSPDif(mn,min,mx):28,28,308	hhL (dB)	-10.12	-3.91	-5.38	-12.49	19.5
PPS(min,max,std): 20,36,2.20	vvL (dB)	-7.30	-0.52	-2.83	-10.84	15.8
Prof: 19014 to 133361, NumProf(t/r): 114347/17069	ppN (m/s)	-12.40	12.51	0.07	4.16	
ProcTime/Recs: 15:40:12-15:48:24/0-17068	ppT (m/s)	-98.00	98.86	0.52	32.88	
MxACQtime: 33ms; DRate: 193.8KB/s; Flags: 0, 0, 0	hh/vv (dB)	-NaN	50.07	21.85	34.75	1947
Pulse: 275ns, IFilt: 5.0MHz; ppPol: HH HV VV	vh/hh (dB)	-NaN	-36.24	-42.48	-38.64	242.
TxPol: HHVV, PRF: 20 10 20 10 kHz	hv/vv (dB)	-NaN	-28.19	-53.82	-44.82	794.
Range: Delay 75m, Spacing 15m, Gates 100	hn/jmp (dB)	-2.84	1.97	-0.08	-8.70	13.7
Ave. Pulses: 84, Rng/Prof Aspect@90m/s: 5.8	vn/jmp (dB)	-2.66	2.14	-0.10	-8.57	14.2



IHOP 2002 (dual-antenna config, modes 1,3,4,7) Data (cal: 49.0,50.0)

W2002-06-21-15-40-25 - PPMAG4	Min	Max	Mean	Std	Varc%	
IRIG:1,UTC: 15:40:12.02 to 16:35:14.72, Dur: 3302s	hhN(dB)	-67.91	-61.65	-66.12	-74.89	13.2
TimeLngth: 3302.70s, TimeInt: 28ms (34.6pps)	vvN(dB)	-66.85	-60.61	-65.09	-73.96	12.9
TimeCor=-13.0s, DSPDif(mn,min,mx):28,28,308	hhL(dB)	-10.12	-3.91	-5.38	-12.49	19.5
PPS(min,max,std): 20,36,2.20	vvL(dB)	-7.30	-0.52	-2.83	-10.84	15.8
Prof: 19014 to 133361, NumProf(t/r): 114347/17069	ppN(m/s)	-12.40	12.51	0.07	4.16	
ProcTime/Recs: 15:40:12-15:48:24/0-17068	ppT(m/s)	-98.00	98.86	0.52	32.88	
MxACQtime: 33ms; DRate: 193.8KB/s; Flags: 0, 0, 0	hh/vv(dB)	-NaN	50.07	21.85	34.75	1947
Pulse: 275ns, IFilt: 5.0MHz; ppPol: HH HV VV	vh/hh(dB)	-NaN	-36.24	-42.48	-38.64	242.
TxPol: HHVV, PRF: 20 10 20 10 kHz	hv/vv(dB)	-NaN	-28.19	-53.82	-44.82	794.
Range: Delay 75m, Spacing 15m, Gates 100	hnjmp(dB)	-2.84	1.97	-0.08	-8.70	13.7
Ave. Pulses: 84, Rng/Prof Aspect@90m/s: 5.8	vnjmp(dB)	-2.66	2.14	-0.10	-8.57	14.2



IHOP 2002 (dual-antenna config, modes 1,3,4,7) Data (cal: 49.0,50.0)

	Min	Max	Mean	Std	Varc%	
W2002-06-21-15-40-25 - PPMAG4						
IRIG:1,UTC: 15:40:12.02 to 16:35:14.72, Dur: 3302s	hhN (dB)	-67.91	-61.65	-66.12	-74.89	13.2
TimeLngth: 3302.70s, TimeInt: 28ms (34.6pps)	vvN (dB)	-66.85	-60.61	-65.09	-73.96	12.9
TimeCor=-13.0s, DSPDif(mn,min,mx):28,28,308	hhL (dB)	-10.12	-3.91	-5.38	-12.49	19.5
PPS(min,max,std): 20,36,2.20	vvL (dB)	-7.30	-0.52	-2.83	-10.84	15.8
Prof: 19014 to 133361, NumProf(t/r): 114347/17069	ppN (m/s)	-12.40	12.51	0.07	4.16	
ProcTime/Recs: 15:40:12-15:48:24/0-17068	ppT (m/s)	-98.00	98.86	0.52	32.88	
MxACQtime: 33ms; DRate: 193.8KB/s; Flags: 0, 0, 0	hh/vv (dB)	-NaN	50.07	21.85	34.75	1947
Pulse: 275ns, IFilt: 5.0MHz; ppPol: HH HV VV	vh/hh (dB)	-NaN	-36.24	-42.48	-38.64	242.
TxPol: HHVV, PRF: 20 10 20 10 kHz	hv/vv (dB)	-NaN	-28.19	-53.82	-44.82	794.
Range: Delay 75m, Spacing 15m, Gates 100	hnjmp (dB)	-2.84	1.97	-0.08	-8.70	13.7
Ave. Pulses: 84, Rng/Prof Aspect@90m/s: 5.8	vnjmp (dB)	-2.66	2.14	-0.10	-8.57	14.2