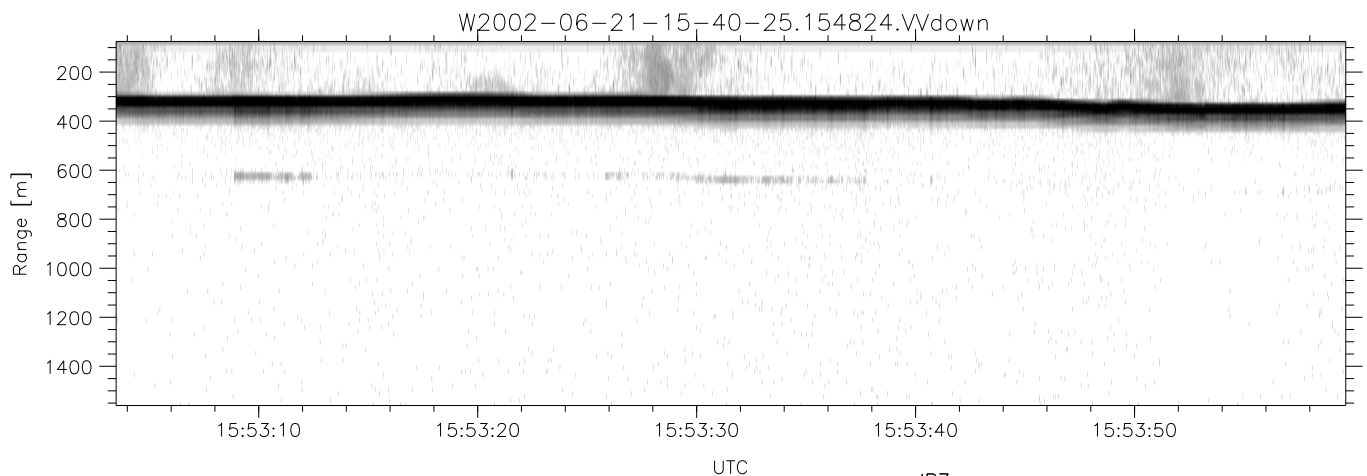
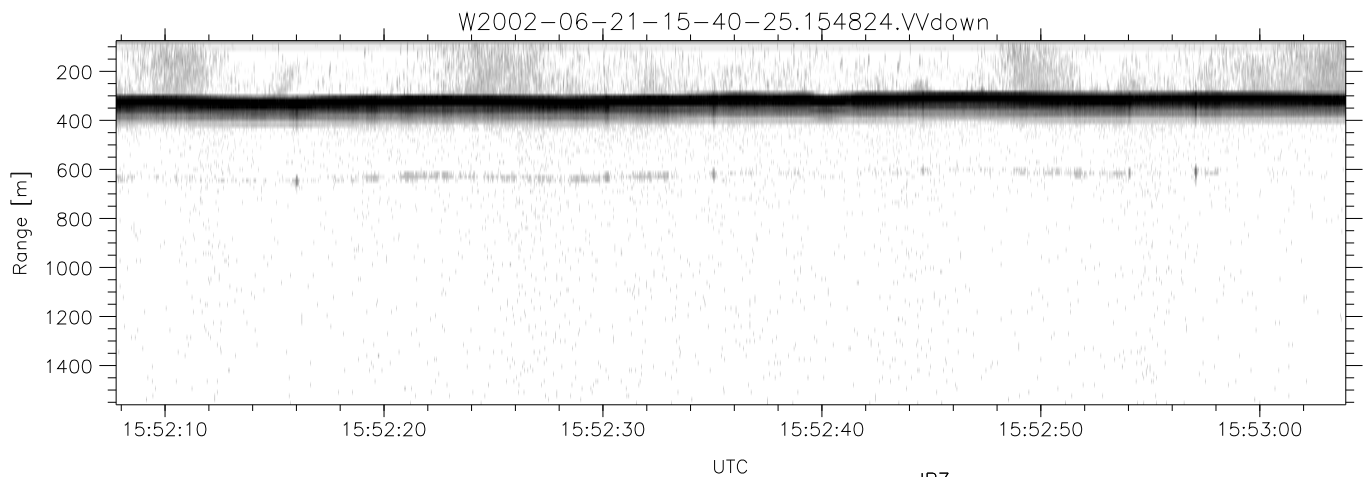
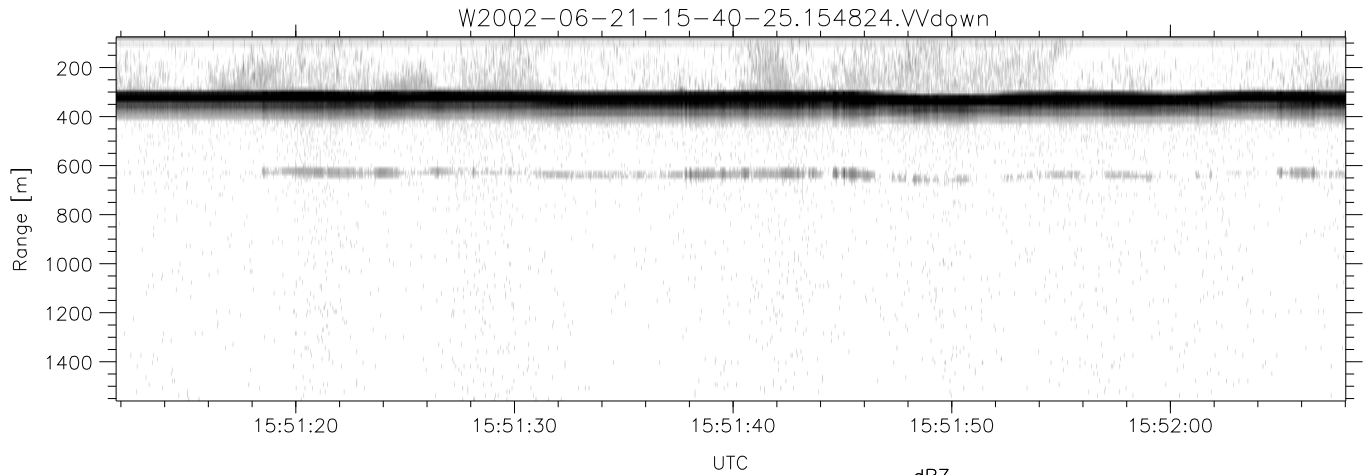


IHOP 2002 (dual-antenna config, modes 1,3,4,7) Data (cal: 49.0,50.0)

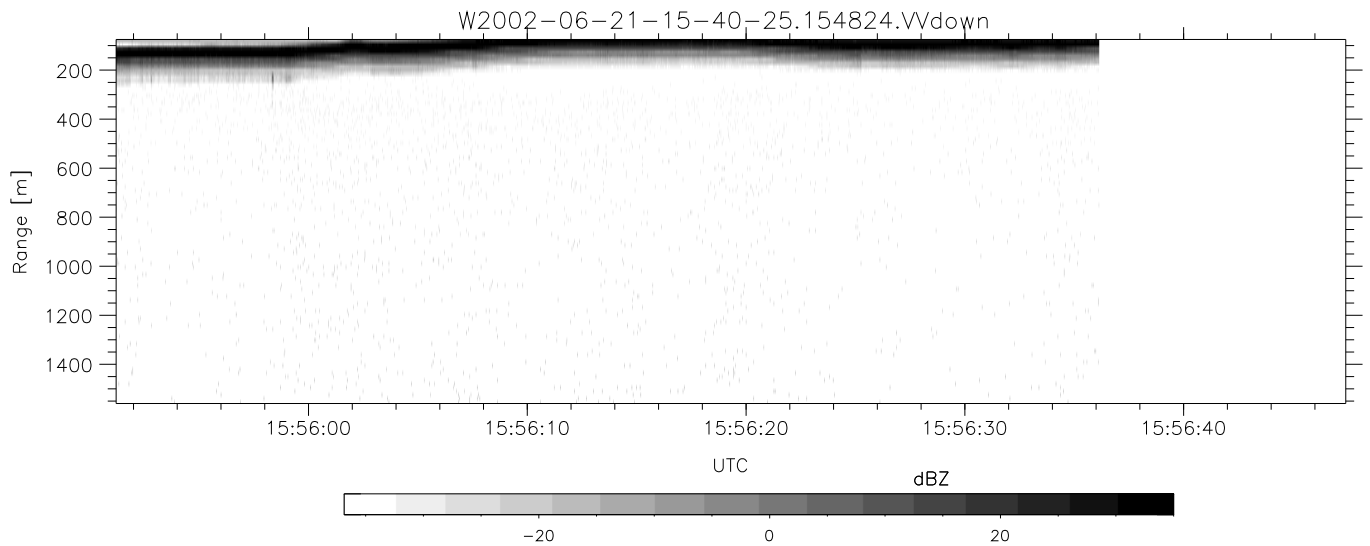
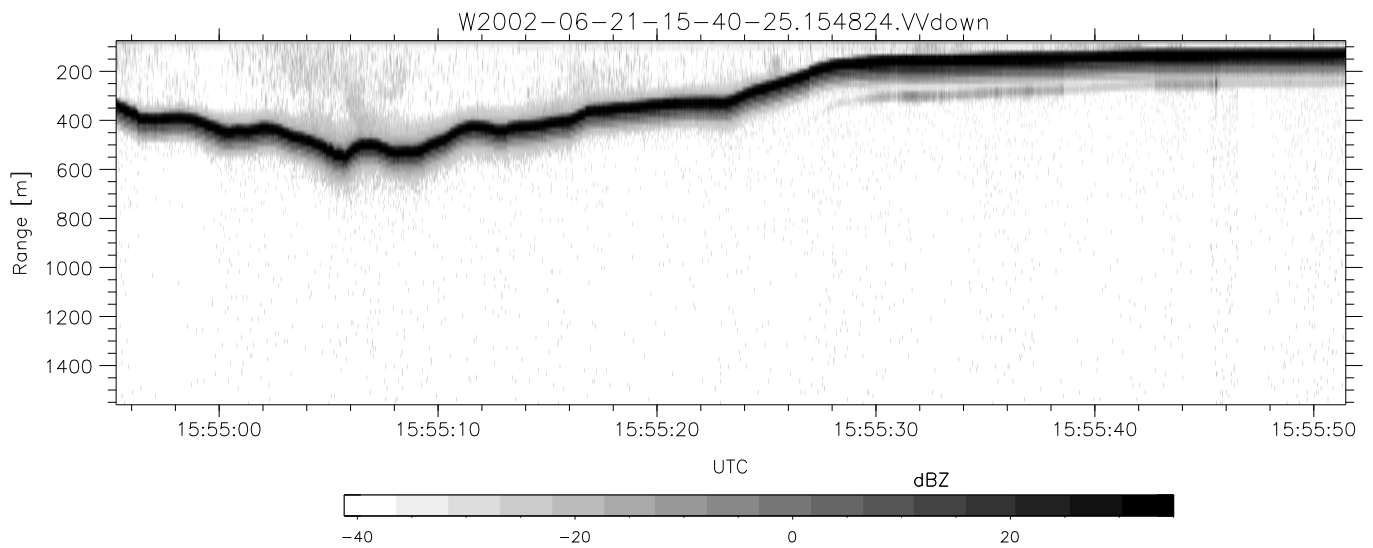
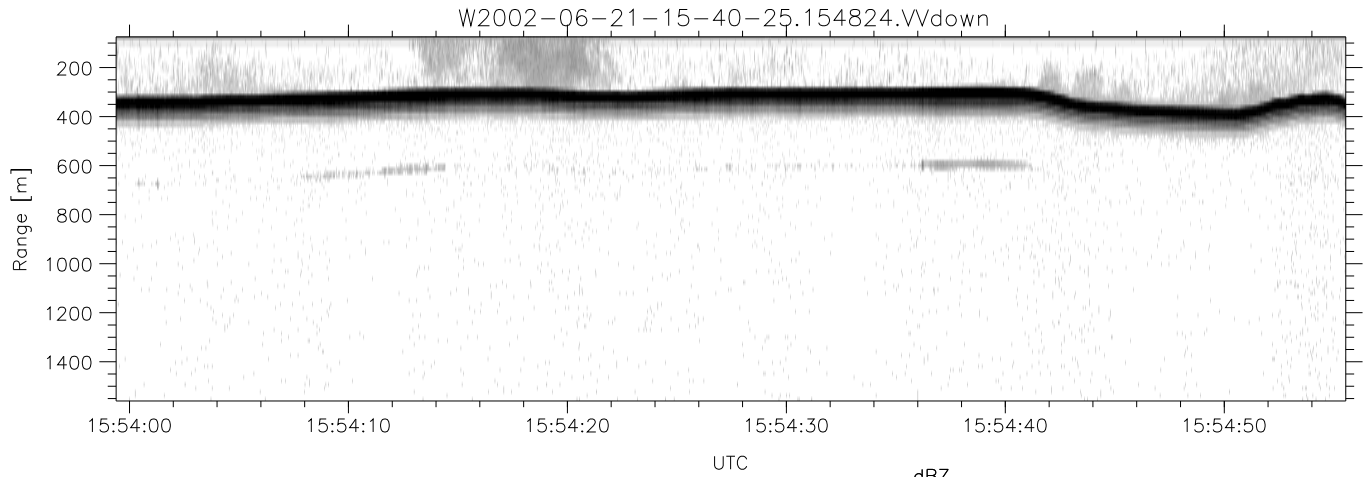
W2002-06-21-15-40-25 - PPMAG4	Min	Max	Mean	Std	Varc%	
IRIG:1,UTC: 15:40:12.02 to 16:35:14.72, Dur: 3302s	hhN(dB)	-67.97	-64.64	-66.20	-76.25	9.9
TimeLngth: 3302.70s, TimeInt: 28ms (34.6pps)	vvN(dB)	-67.06	-63.52	-65.16	-75.12	10.1
TimeCor=-13.0s, DSPDif(mn,min,mx):28,28,301	hhL(dB)	-10.89	-3.76	-5.54	-11.65	24.5
PPS(min,max,std): 26,36,2.10	vvL(dB)	-7.42	-0.53	-3.16	-9.75	21.9
Prof: 19014 to 133361, NumProf(t/r): 114347/17069	ppN(m/s)	-12.43	12.59	-0.04	4.14	
ProcTime/Recs: 15:48:24-15:56:36/17069-34137	ppT(m/s)	-98.20	99.49	-0.35	32.67	
MxACQtime: 33ms; DRate: 193.8KB/s; Flags: 0, 0, 0	hh/vv(dB)	-NaN	44.09	14.87	31.73	4843
Pulse: 275ns, IFilt: 5.0MHz; ppPol: HH HV VV	vh/hh(dB)	-NaN	-29.97	-34.26	-35.71	71.7
TxPol: HHVV, PRF: 20 10 20 10 kHz	hv/vv(dB)	-NaN	-19.93	-46.51	-36.30	1049
Range: Delay 75m, Spacing 15m, Gates 100	hn/jmp(dB)	-2.08	2.40	0.17	-8.44	13.8
Ave. Pulses: 84, Rng/Prof Aspect@90m/s: 5.8	vn/jmp(dB)	-2.19	2.62	0.20	-8.27	14.2



IHOP 2002 (dual-antenna config, modes 1,3,4,7) Data (cal: 49.0,50.0)

W2002-06-21-15-40-25 - PPMAG4
 IRIG:1,UTC: 15:40:12.02 to 16:35:14.72, Dur: 3302s
 TimeLngth: 3302.70s, TimeInt: 28ms (34.6pps)
 TimeCor=-13.0s, DSPDif(mn,min,mx):28,28,301
 PPS(min,max,std): 26,36,2.10
 Prof: 19014 to 133361, NumProf(t/r): 114347/17069
 ProcTime/Recs: 15:48:24-15:56:36/17069-34137
 MxACQtime: 33ms; DRate: 193.8KB/s; Flags: 0, 0, 0
 Pulse: 275ns, IFilt: 5.0MHz; ppPol: HH HV VV
 TxPol: HHVV, PRF: 20 10 20 10 kHz
 Range: Delay 75m, Spacing 15m, Gates 100
 Ave. Pulses: 84, Rng/Prof Aspect@90m/s: 5.8

	Min	Max	Mean	Std	Varc%
hhN(dB)	-67.97	-64.64	-66.20	-76.25	9.9
vvN(dB)	-67.06	-63.52	-65.16	-75.12	10.1
hhL(dB)	-10.89	-3.76	-5.54	-11.65	24.5
vvL(dB)	-7.42	-0.53	-3.16	-9.75	21.9
ppN(m/s)	-12.43	12.59	-0.04	4.14	
ppT(m/s)	-98.20	99.49	-0.35	32.67	
hh/vv(dB)	-NaN	44.09	14.87	31.73	4843
vh/hh(dB)	-NaN	-29.97	-34.26	-35.71	71.7
hv/vv(dB)	-NaN	-19.93	-46.51	-36.30	1049
hnjmp(dB)	-2.08	2.40	0.17	-8.44	13.8
vnjmp(dB)	-2.19	2.62	0.20	-8.27	14.2



IHOP 2002 (dual-antenna config, modes 1,3,4,7) Data (cal: 49.0,50.0)

	Min	Max	Mean	Std	Varc%
W2002-06-21-15-40-25 - PPMAG4					
IRIG:1,UTC: 15:40:12.02 to 16:35:14.72, Dur: 3302s					
TimeLngth: 3302.70s, TimeInt: 28ms (34.6pps)					
TimeCor=-13.0s, DSPDif(mn,min,mx):28,28,301					
PPS(min,max,std): 26,36,2.10					
Prof: 19014 to 133361, NumProf(t/r): 114347/17069	hhN(dB)	-67.97 -64.64	-66.20	-76.25	9.9
MxACQtime: 33ms; DRate: 193.8KB/s; Flags: 0, 0, 0	vvN(dB)	-67.06 -63.52	-65.16	-75.12	10.1
Pulse: 275ns, IFilt: 5.0MHz; ppPol: HH HV VV	hhL(dB)	-10.89 -3.76	-5.54	-11.65	24.5
TxPol: HHVV, PRF: 20 10 20 10 kHz	vvL(dB)	-7.42 -0.53	-3.16	-9.75	21.9
Range: Delay 75m, Spacing 15m, Gates 100	ppN(m/s)	-12.43 12.59	-0.04	4.14	
Ave. Pulses: 84, Rng/Prof Aspect@90m/s: 5.8	ppT(m/s)	-98.20 99.49	-0.35	32.67	
	hh/vv(dB)	-NaN 44.09	14.87	31.73	4843
	vh/hh(dB)	-NaN -29.97	-34.26	-35.71	71.7
	hv/vv(dB)	-NaN -19.93	-46.51	-36.30	1049
	hnjmp(dB)	-2.08 2.40	0.17	-8.44	13.8
	vnjmp(dB)	-2.19 2.62	0.20	-8.27	14.2