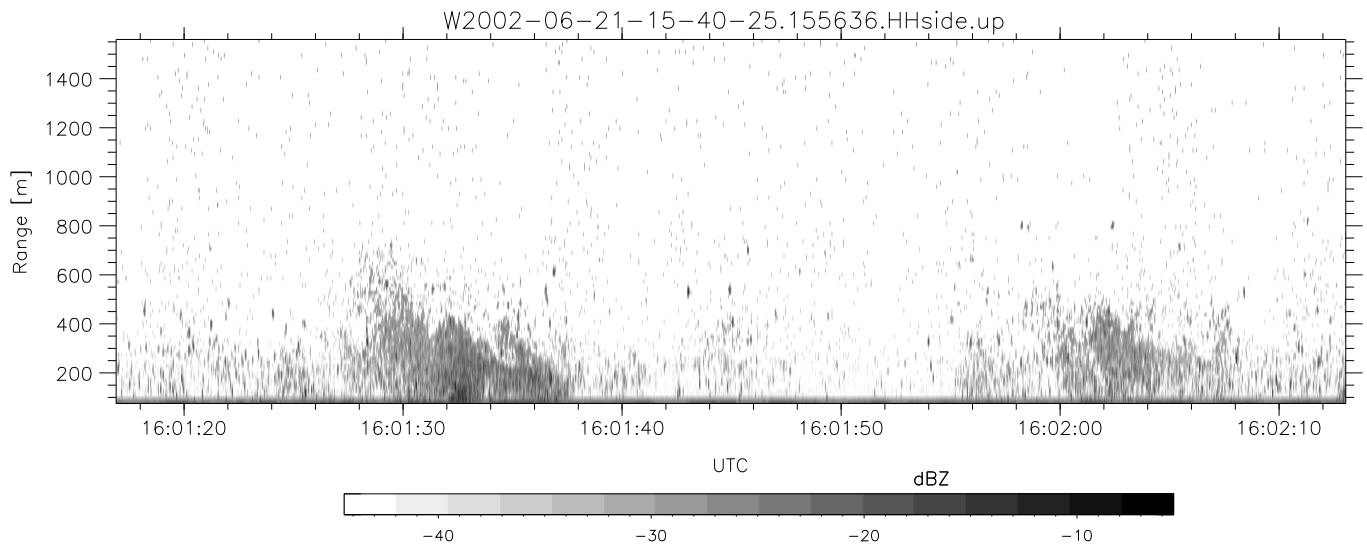
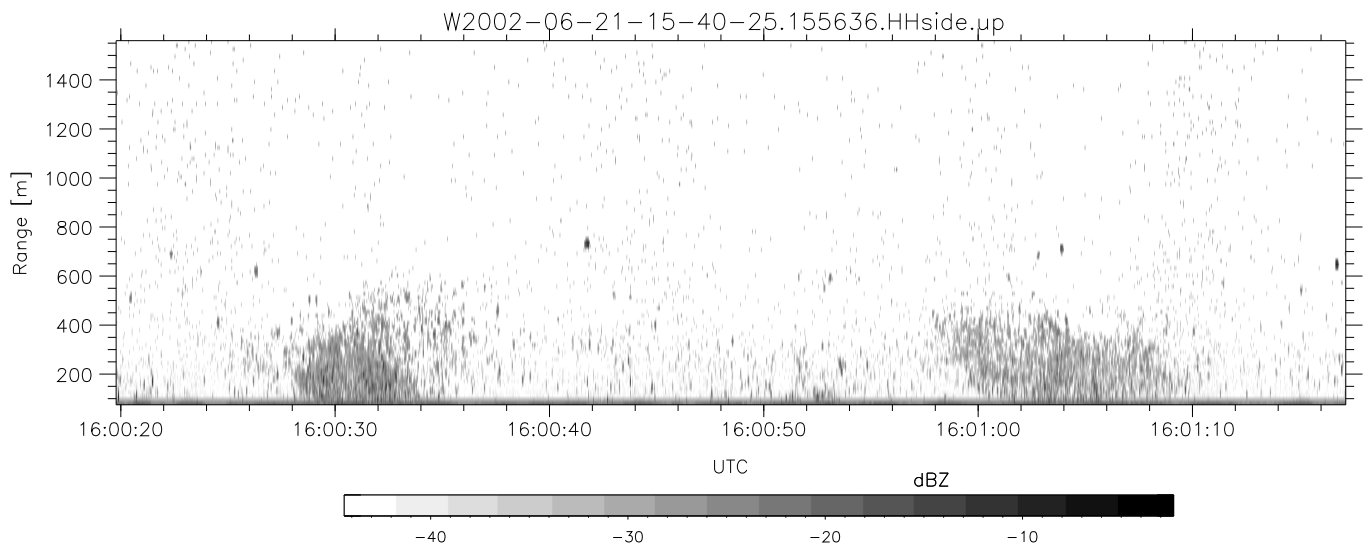
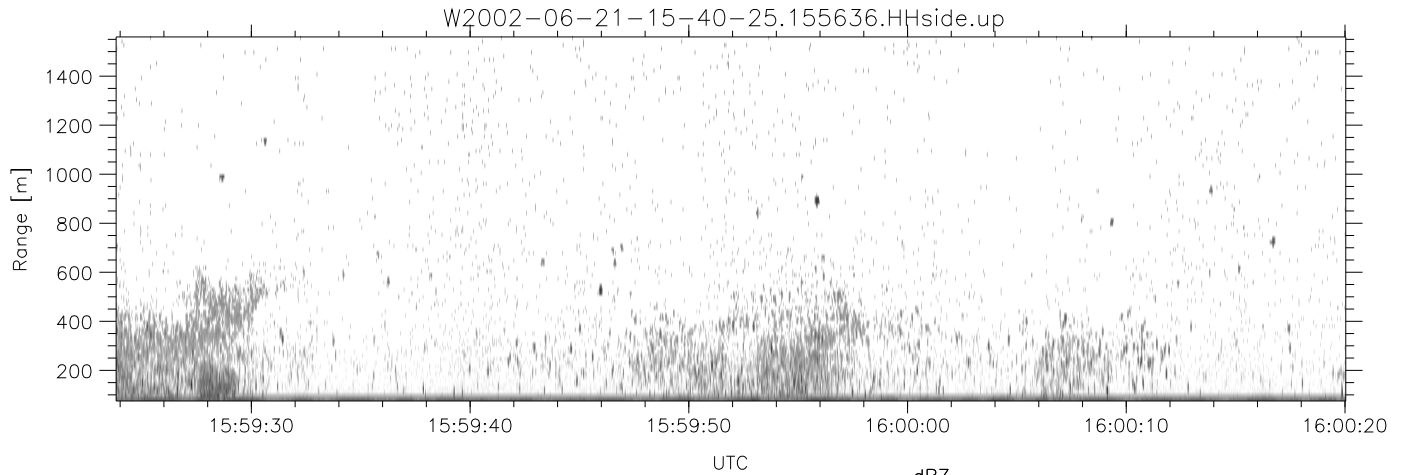


IHOP 2002 (dual-antenna config, modes 1,3,4,7) Data (cal: 49.0,50.0)

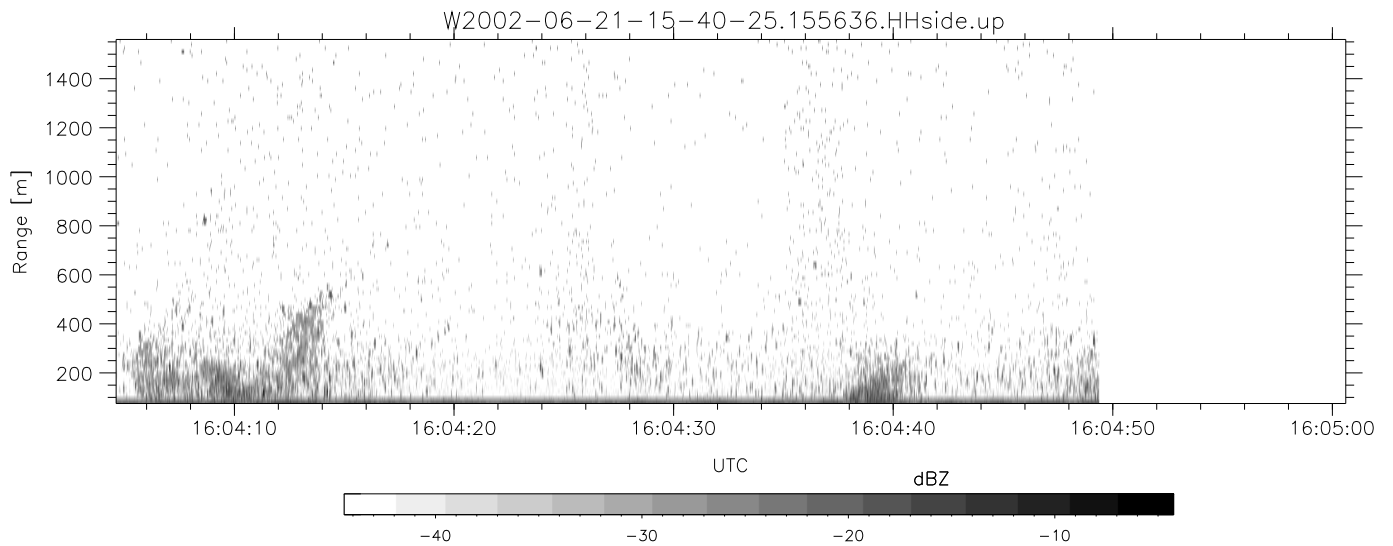
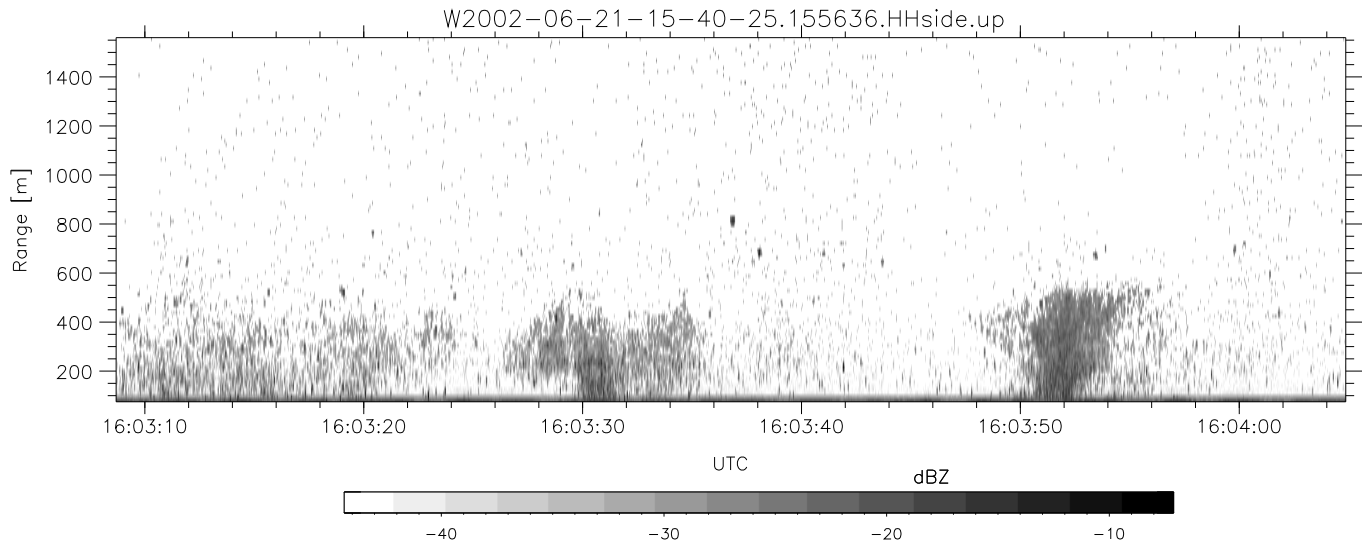
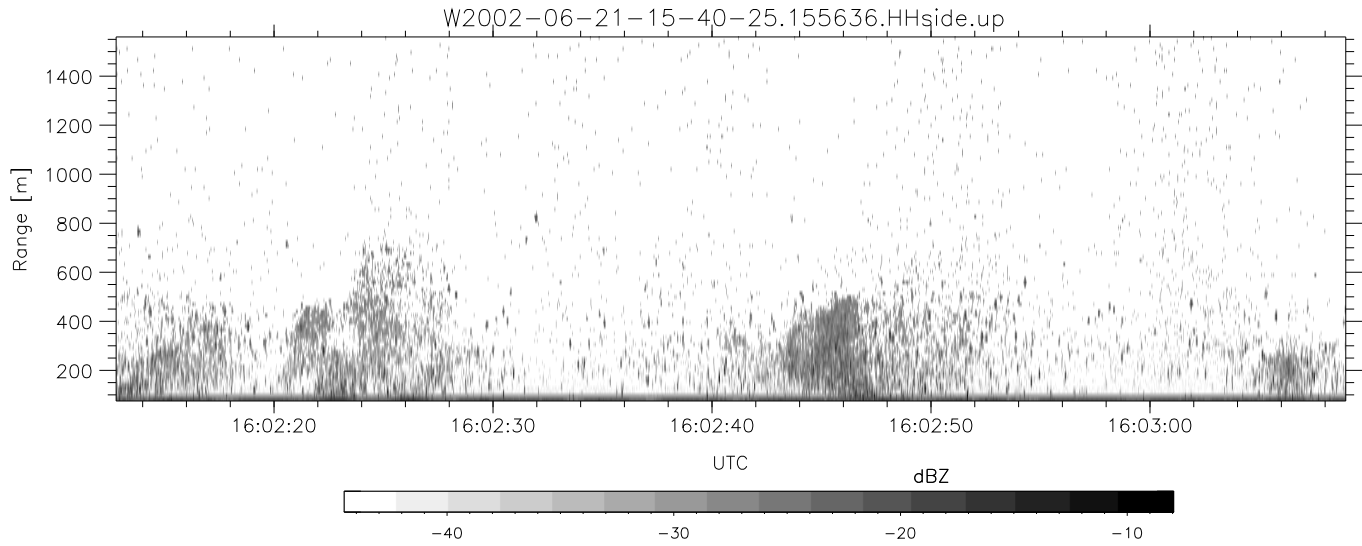
W2002-06-21-15-40-25 - PPMAG4
 IRIG:1,UTC: 15:40:12.02 to 16:35:14.72, Dur: 3302s
 TimeLngth: 3302.70s, TimeInt: 28ms (34.6pps)
 TimeCor=-13.0s, DSPDif(mn,min,mx):28,28,322
 PPS(min,max,std): 24,36,2.26
 Prof: 19014 to 133361, NumProf(t/r): 114347/17069
 ProcTime/Recs: 15:56:36-16:04:49/34138-51206
 MxACQtime: 33ms; DRate: 193.8KB/s; Flags: 0, 0, 0
 Pulse: 275ns, IFfilt: 5.0MHz; ppPol: HH HV VV
 TxPol: HHVV, PRF: 20 10 20 10 kHz
 Range: Delay 75m, Spacing 15m, Gates 100
 Ave. Pulses: 84, Rng/Prof Aspect@90m/s: 5.8

	Min	Max	Mean	Std	Varc%
hhN(dB)	-68.15	-64.79	-66.28	-76.31	9.9
vvN(dB)	-67.32	-63.76	-65.24	-75.21	10.1
hhL(dB)	-13.87	-4.15	-8.14	-15.12	20.1
vvL(dB)	-8.09	-1.76	-4.70	-10.67	25.3
ppN(m/s)	-11.84	12.61	-0.03	4.13	
ppT(m/s)	-93.55	99.64	-0.23	32.64	
hh/vv(dB)	-NaN	38.69	5.95	23.08	5164
vh/hh(dB)	-41.12	-0.83	-9.13	-6.39	188.
hv/vv(dB)	-NaN	-18.06	-40.02	-37.15	193.
hnjmp(dB)	-2.54	2.16	-0.09	-8.62	14.0
vnjmp(dB)	-2.47	1.97	-0.10	-8.59	14.2



IHOP 2002 (dual-antenna config, modes 1,3,4,7) Data (cal: 49.0,50.0)

W2002-06-21-15-40-25 - PPMAG4	Min	Max	Mean	Std	Varc%	
IRIG:1,UTC: 15:40:12.02 to 16:35:14.72, Dur: 3302s	hhN (dB)	-68.15	-64.79	-66.28	-76.31	9.9
TimeLngth: 3302.70s, TimeInt: 28ms (34.6pps)	vvN (dB)	-67.32	-63.76	-65.24	-75.21	10.1
TimeCor=-13.0s, DSPDif(mn,min,mx):28,28,322	hhL (dB)	-13.87	-4.15	-8.14	-15.12	20.1
PPS(min,max,std): 24,36,2.26	vvL (dB)	-8.09	-1.76	-4.70	-10.67	25.3
Prof: 19014 to 133361, NumProf(t/r): 114347/17069	ppN (m/s)	-11.84	12.61	-0.03	4.13	
ProcTime/Recs: 15:56:36-16:04:49/34138-51206	ppT (m/s)	-93.55	99.64	-0.23	32.64	
MxAcQtime: 33ms; DRate: 193.8KB/s; Flags: 0, 0, 0	hh/vv (dB)	-NaN	38.69	5.95	23.08	5164
Pulse: 275ns, IFilt: 5.0MHz; ppPol: HH HV VV	vh/hh (dB)	-41.12	-0.83	-9.13	-6.39	188.
TxPol: HHVV, PRF: 20 10 20 10 kHz	hv/vv (dB)	-NaN	-18.06	-40.02	-37.15	193.
Range: Delay 75m, Spacing 15m, Gates 100	hn/jmp (dB)	-2.54	2.16	-0.09	-8.62	14.0
Ave. Pulses: 84, Rng/Prof Aspect@90m/s: 5.8	vn/jmp (dB)	-2.47	1.97	-0.10	-8.59	14.2



IHOP 2002 (dual-antenna config, modes 1,3,4,7) Data (cal: 49.0,50.0)

	Min	Max	Mean	Std	Varc%
W2002-06-21-15-40-25 - PPMAG4					
IRIG:1,UTC: 15:40:12.02 to 16:35:14.72, Dur: 3302s	hhN (dB)	-68.15 -64.79	-66.28	-76.31	9.9
TimeLngth: 3302.70s, TimeInt: 28ms (34.6pps)	vvN (dB)	-67.32 -63.76	-65.24	-75.21	10.1
TimeCor=-13.0s, DSPDif(mn,min,mx):28,28,322	hhL (dB)	-13.87 -4.15	-8.14	-15.12	20.1
PPS(min,max,std): 24,36,2.26	vvL (dB)	-8.09 -1.76	-4.70	-10.67	25.3
Prof: 19014 to 133361, NumProf(t/r): 114347/17069	ppN (m/s)	-11.84 12.61	-0.03	4.13	
ProcTime/Recs: 15:56:36-16:04:49/34138-51206	ppT (m/s)	-93.55 99.64	-0.23	32.64	
MxAcQtime: 33ms; DRate: 193.8KB/s; Flags: 0, 0, 0	hh/vv (dB)	-NaN 38.69	5.95	23.08	5164
Pulse: 275ns, IFilt: 5.0MHz; ppPol: HH HV VV	vh/hh (dB)	-41.12 -0.83	-9.13	-6.39	188.
TxPol: HHVV, PRF: 20 10 20 10 kHz	hv/vv (dB)	-NaN -18.06	-40.02	-37.15	193.
Range: Delay 75m, Spacing 15m, Gates 100	hn/jmp (dB)	-2.54 2.16	-0.09	-8.62	14.0
Ave. Pulses: 84, Rng/Prof Aspect@90m/s: 5.8	vn/jmp (dB)	-2.47 1.97	-0.10	-8.59	14.2