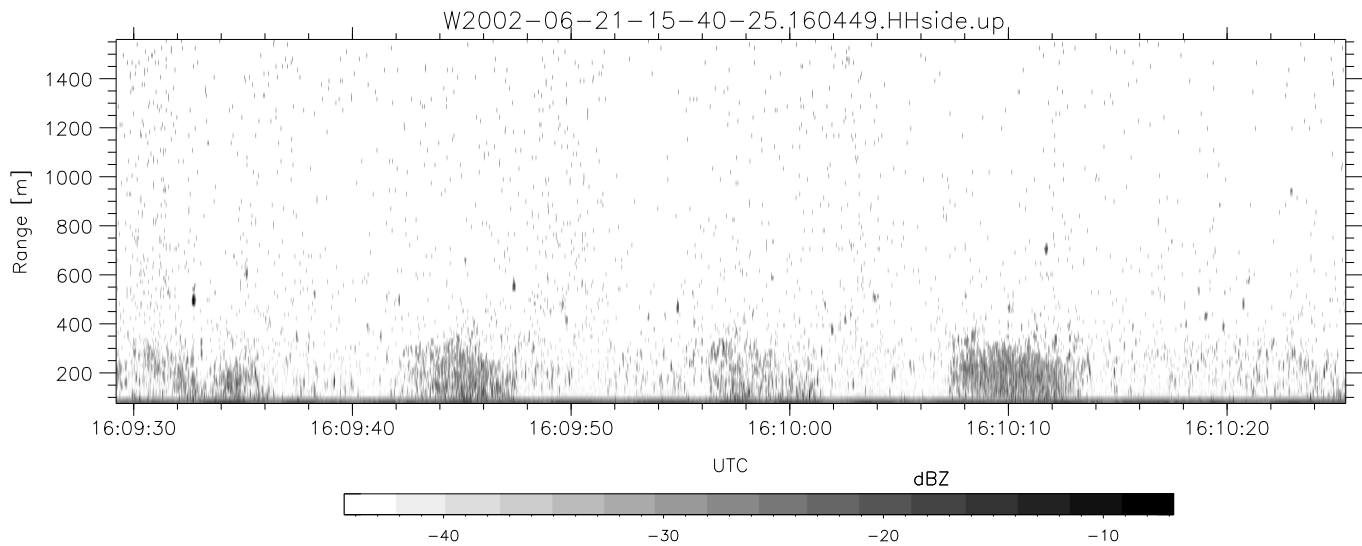
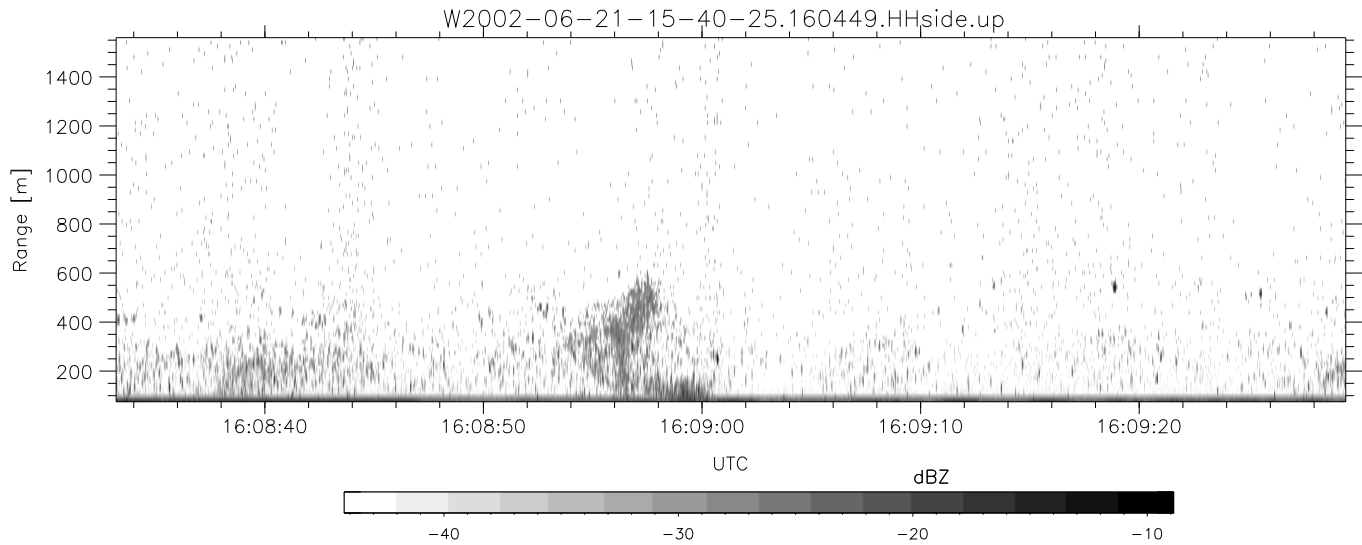
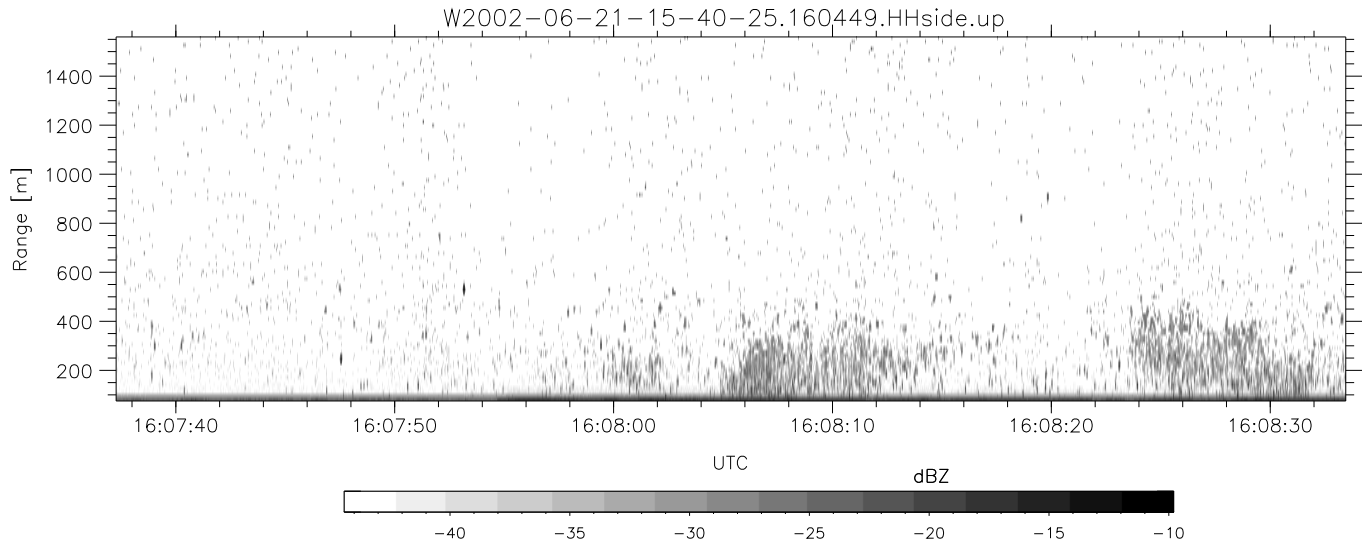


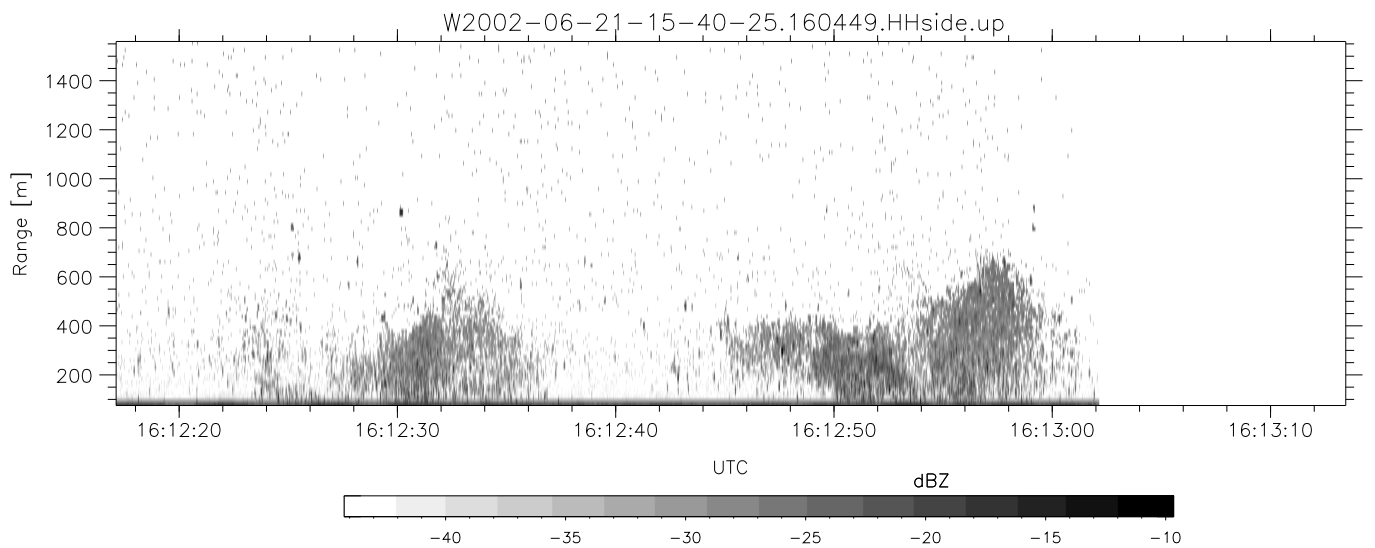
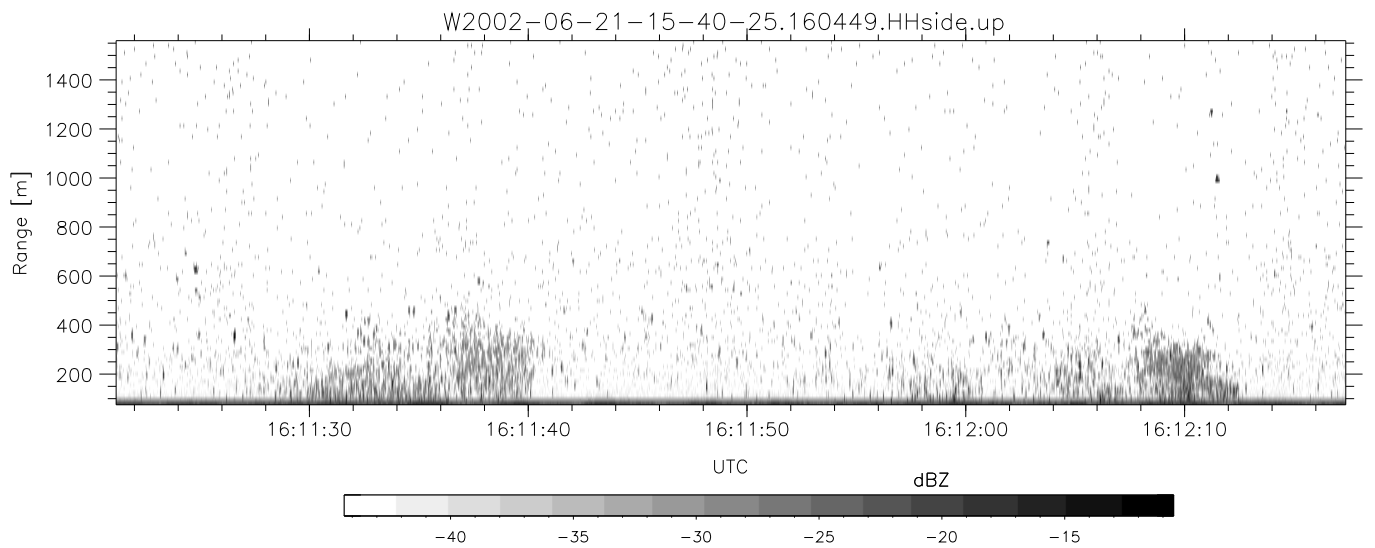
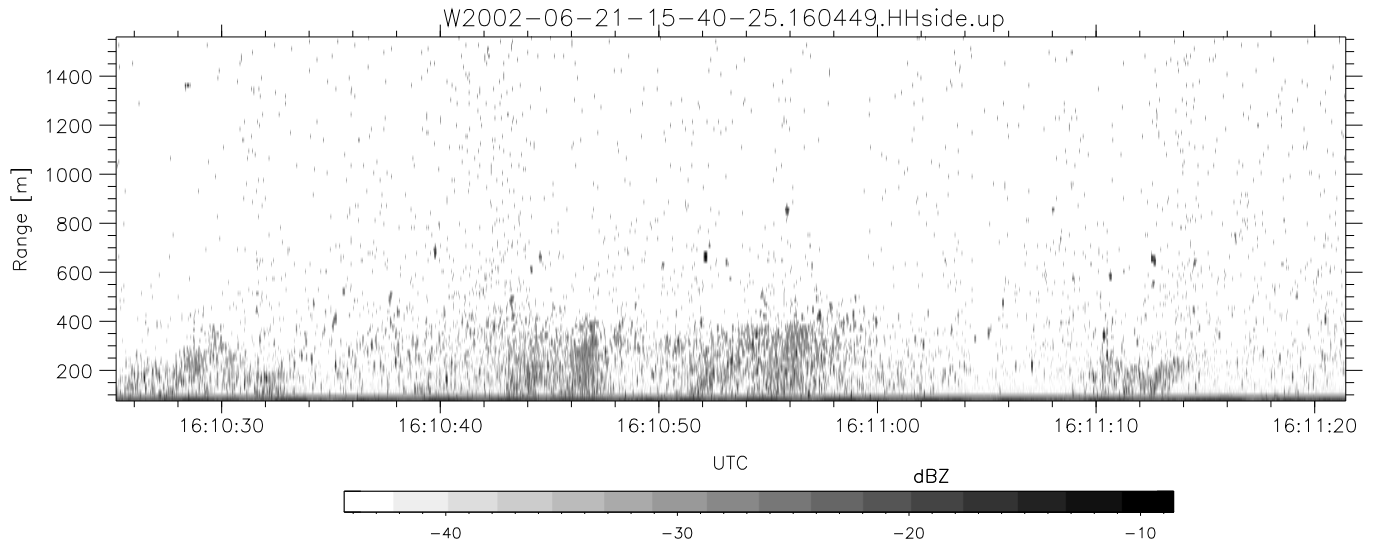
IHOP 2002 (dual-antenna config, modes 1,3,4,7) Data (cal: 49.0,50.0)

	Min	Max	Mean	Std	Varc%	
W2002-06-21-15-40-25 - PPMAG4						
IRIG:1,UTC: 15:40:12.02 to 16:35:14.72, Dur: 3302s	hhN (dB)	-68.10	-64.70	-66.30	-76.34	9.9
TimeLngth: 3302.70s, TimeInt: 28ms (34.6pps)	vvN (dB)	-67.14	-63.53	-65.28	-75.22	10.1
TimeCor=-13.0s, DSPDif(mn,min,mx):28,28,238	hhL (dB)	-11.95	-4.84	-8.45	-15.51	19.7
PPS(min,max,std): 25,36,2.22	vvL (dB)	-7.73	-1.76	-5.18	-11.41	23.8
Prof: 19014 to 133361, NumProf(t/r): 114347/17069	ppN (m/s)	-12.29	12.57	-0.02	4.12	
ProcTime/Recs: 16:04:49-16:13:02/51207-68275	ppT (m/s)	-97.09	99.28	-0.13	32.58	
MxACQtime: 33ms; DRate: 193.8KB/s; Flags: 0, 0, 0	hh/vv (dB)	-NaN	39.96	1.95	26.96	3162
Pulse: 275ns, IFfilt: 5.0MHz; ppPol: HH HV VV	vh/hh (dB)	-99.00	-99.00	-99.00	-99.00	-99.
TxPol: HHVV, PRF: 20 10 20 10 kHz	hv/vv (dB)	-NaN	-25.28	-50.22	-45.00	332.
Range: Delay 75m, Spacing 15m, Gates 100	hnjmp (dB)	-2.13	2.26	0.17	-8.46	13.7
Ave. Pulses: 84, Rng/Prof Aspect@90m/s: 5.8	vnjmp (dB)	-2.01	2.81	0.19	-8.31	14.1



IHOP 2002 (dual-antenna config, modes 1,3,4,7) Data (cal: 49.0,50.0)

	Min	Max	Mean	Std	Varc%	
W2002-06-21-15-40-25 - PPMAG4						
IRIG:1,UTC: 15:40:12.02 to 16:35:14.72, Dur: 3302s	hhN (dB)	-68.10	-64.70	-66.30	-76.34	9.9
TimeLngth: 3302.70s, TimeInt: 28ms (34.6pps)	vvN (dB)	-67.14	-63.53	-65.28	-75.22	10.1
TimeCor=-13.0s, DSPDif(mn,min,mx):28,28,238	hhL (dB)	-11.95	-4.84	-8.45	-15.51	19.7
PPS(min,max,std): 25,36,2.22	vvL (dB)	-7.73	-1.76	-5.18	-11.41	23.8
Prof: 19014 to 133361, NumProf(t/r): 114347/17069	ppN (m/s)	-12.29	12.57	-0.02	4.12	
ProcTime/Recs: 16:04:49-16:13:02/51207-68275	ppT (m/s)	-97.09	99.28	-0.13	32.58	
MxACQtime: 33ms; DRate: 193.8KB/s; Flags: 0, 0, 0	hh/vv (dB)	-NaN	39.96	1.95	26.96	3162
Pulse: 275ns, IFilt: 5.0MHz; ppPol: HH HV VV	vh/hh (dB)	-99.00	-99.00	-99.00	-99.00	-99.
TxPol: HHVV, PRF: 20 10 20 10 kHz	hv/vv (dB)	-NaN	-25.28	-50.22	-45.00	332.
Range: Delay 75m, Spacing 15m, Gates 100	hnjmp (dB)	-2.13	2.26	0.17	-8.46	13.7
Ave. Pulses: 84, Rng/Prof Aspect@90m/s: 5.8	vnjmp (dB)	-2.01	2.81	0.19	-8.31	14.1



IHOP 2002 (dual-antenna config, modes 1,3,4,7) Data (cal: 49.0,50.0)

	Min	Max	Mean	Std	Varc%	
W2002-06-21-15-40-25 - PPMAG4						
IRIG:1,UTC: 15:40:12.02 to 16:35:14.72, Dur: 3302s	hhN (dB)	-68.10	-64.70	-66.30	-76.34	9.9
TimeLngth: 3302.70s, TimeInt: 28ms (34.6pps)	vvN (dB)	-67.14	-63.53	-65.28	-75.22	10.1
TimeCor=-13.0s, DSPDif(mn,min,mx):28,28,238	hhL (dB)	-11.95	-4.84	-8.45	-15.51	19.7
PPS(min,max,std): 25,36,2.22	vvL (dB)	-7.73	-1.76	-5.18	-11.41	23.8
Prof: 19014 to 133361, NumProf(t/r): 114347/17069	ppN (m/s)	-12.29	12.57	-0.02	4.12	
ProcTime/Recs: 16:04:49-16:13:02/51207-68275	ppT (m/s)	-97.09	99.28	-0.13	32.58	
MxACQtime: 33ms; DRate: 193.8KB/s; Flags: 0, 0, 0	hh/vv (dB)	-NaN	39.96	1.95	26.96	3162
Pulse: 275ns, IFilt: 5.0MHz; ppPol: HH HV VV	vh/hh (dB)	-99.00	-99.00	-99.00	-99.00	-99.
TxPol: HHVV, PRF: 20 10 20 10 kHz	hv/vv (dB)	-NaN	-25.28	-50.22	-45.00	332.
Range: Delay 75m, Spacing 15m, Gates 100	hnjmp (dB)	-2.13	2.26	0.17	-8.46	13.7
Ave. Pulses: 84, Rng/Prof Aspect@90m/s: 5.8	vnjmp (dB)	-2.01	2.81	0.19	-8.31	14.1