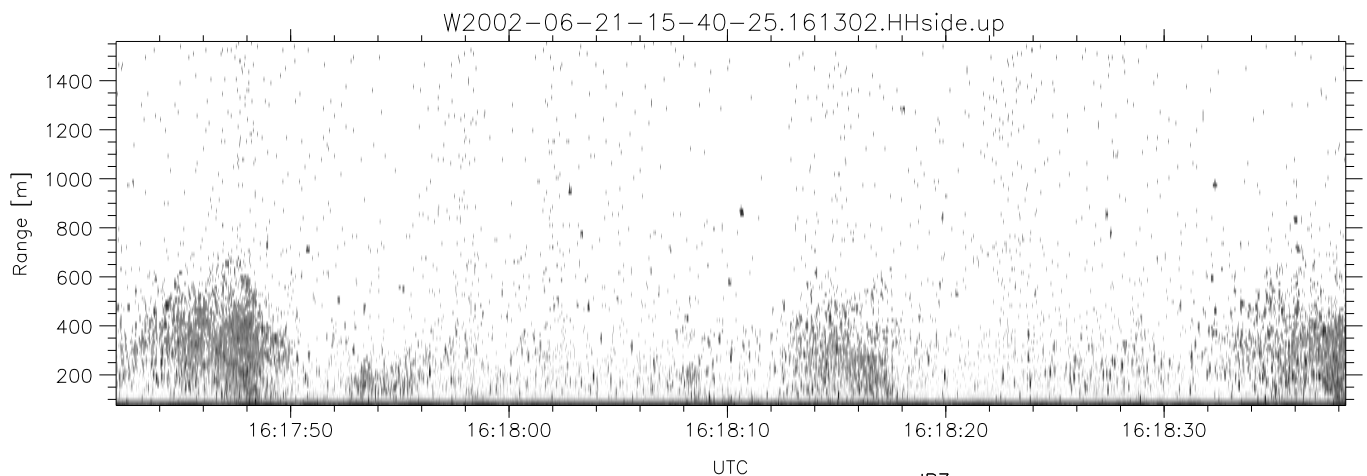
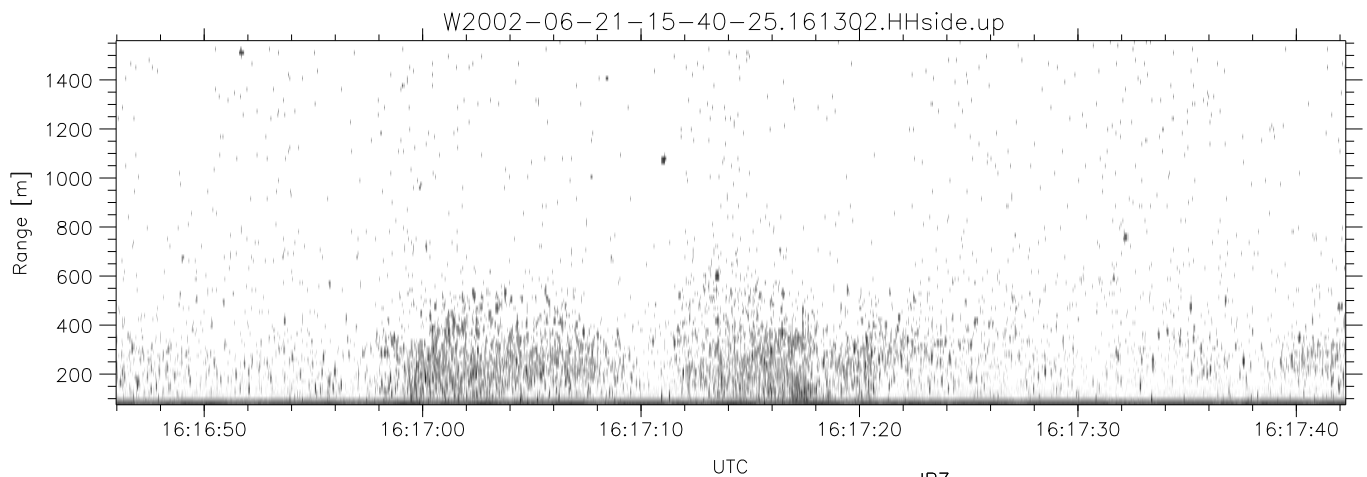
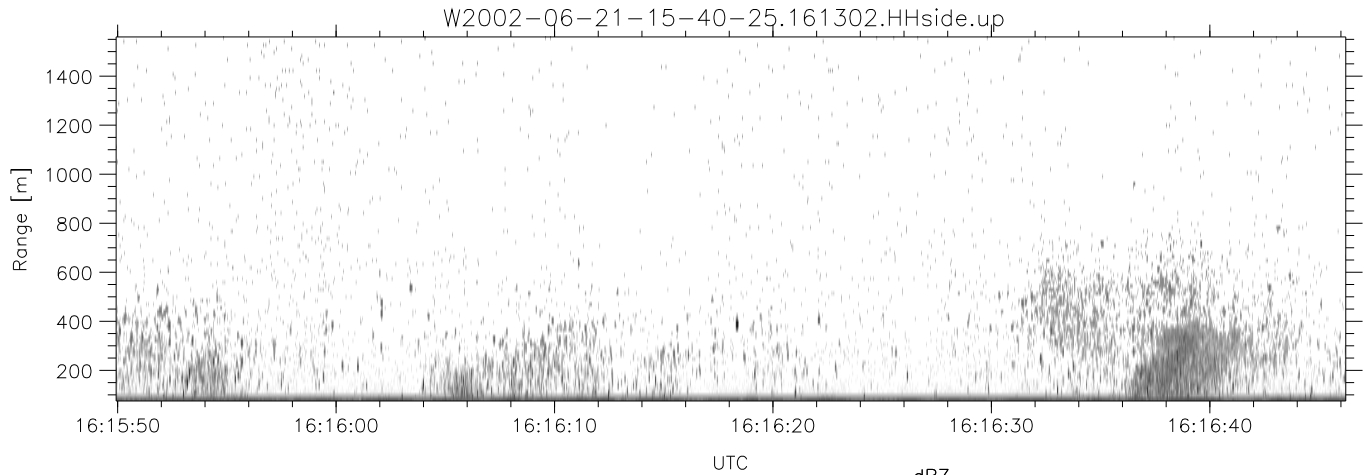


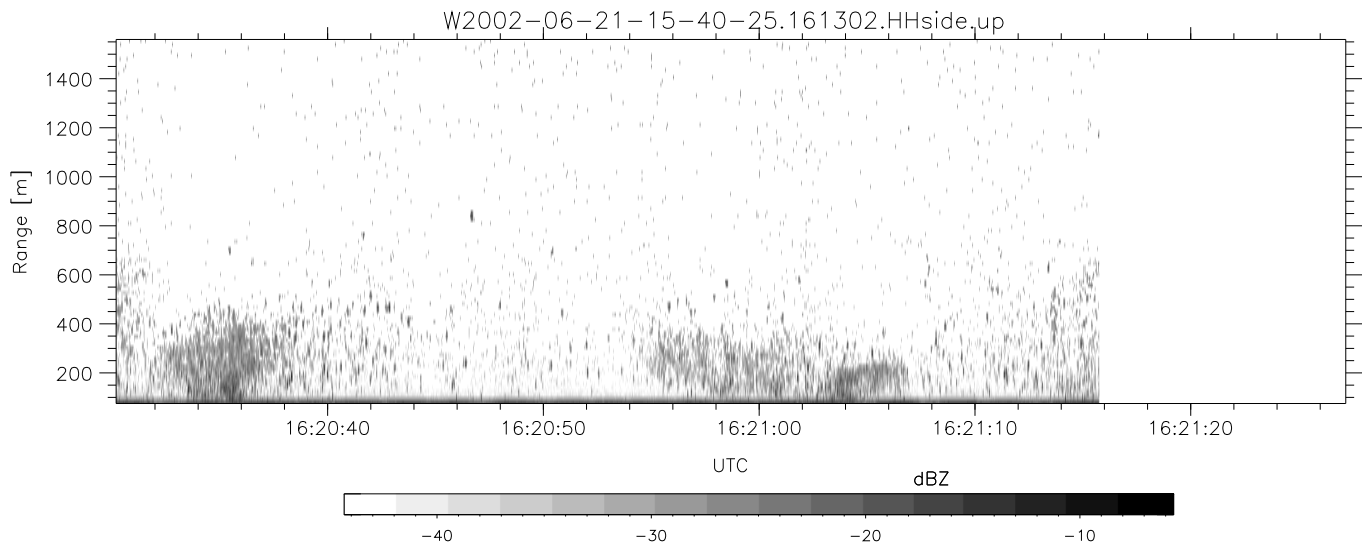
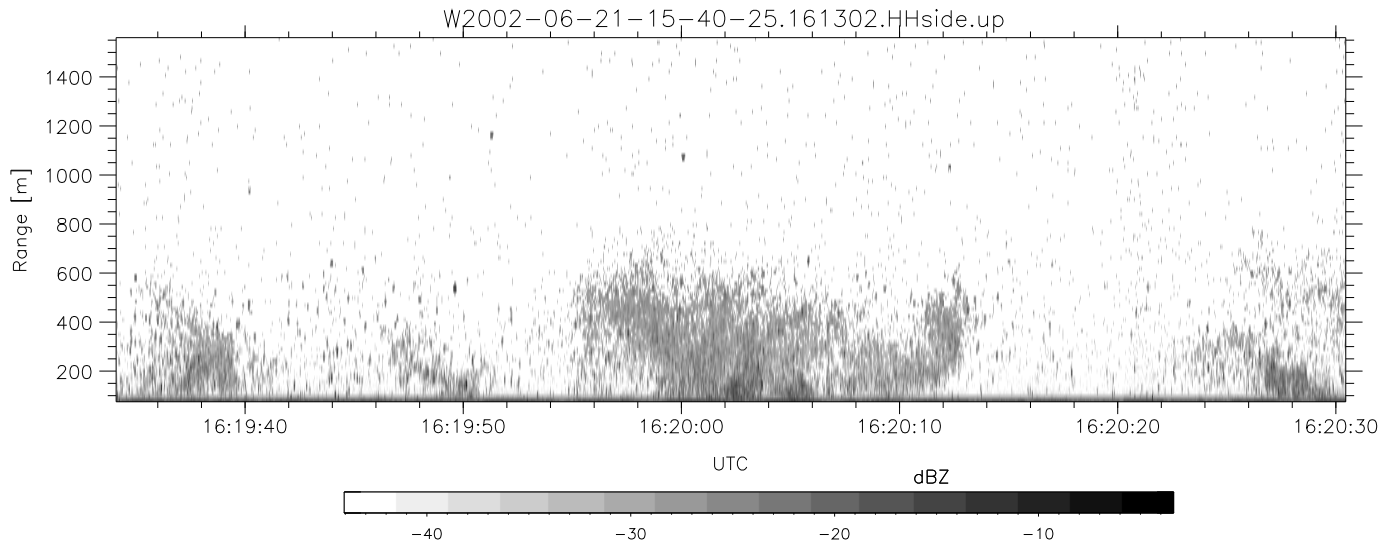
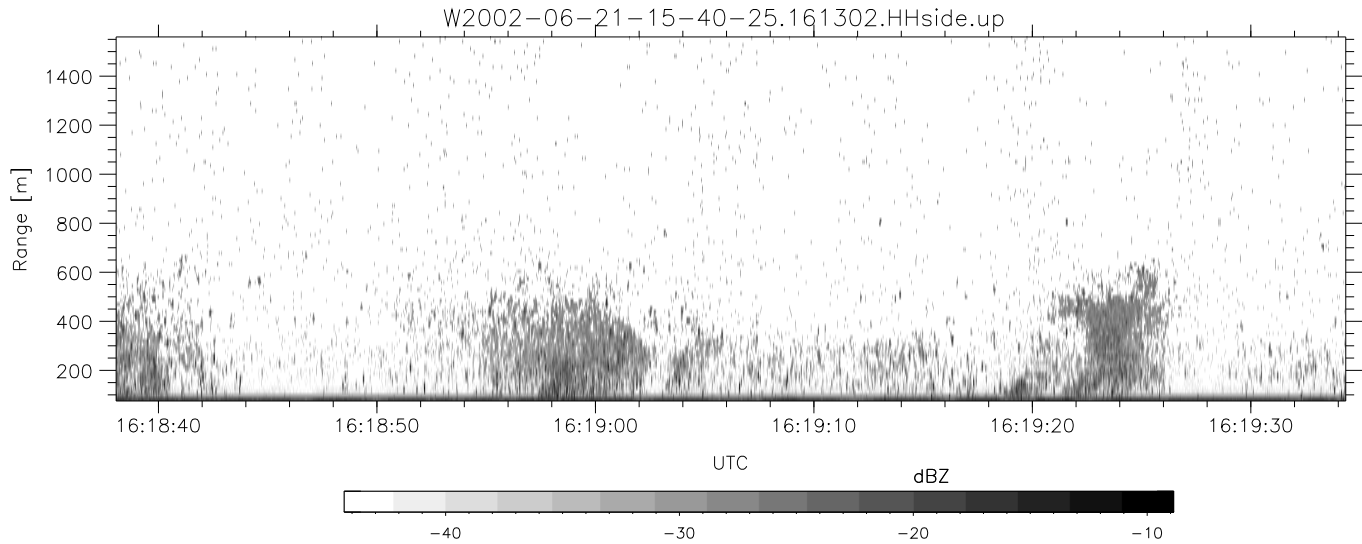
IHOP 2002 (dual-antenna config, modes 1,3,4,7) Data (cal: 49.0,50.0)

	Min	Max	Mean	Std	Varc%	
W2002-06-21-15-40-25 - PPMAG4						
IRIG:1,UTC: 15:40:12.02 to 16:35:14.72, Dur: 3302s	hhN(dB)	-68.03	-64.77	-66.38	-76.36	10.1
TimeLngth: 3302.70s, TimeInt: 28ms (34.6pps)	vvN(dB)	-67.35	-63.65	-65.36	-75.30	10.1
TimeCor=-13.0s, DSPDif(mn,min,mx):29,28,322	hhL(dB)	-15.41	-4.68	-8.11	-15.32	19.0
PPS(min,max,std): 25,36,2.21	vvL(dB)	-13.59	-2.58	-5.28	-11.99	21.3
Prof: 19014 to 133361, NumProf(t/r): 114347/17069	ppN(m/s)	-12.21	12.00	-0.11	4.12	
ProcTime/Recs: 16:13:02-16:21:15/68276-85344	ppT(m/s)	-96.50	94.77	-0.86	32.55	
MxACQtime: 33ms; DRate: 193.8KB/s; Flags: 0, 0, 0	hh/vv(dB)	-NaN	40.67	3.25	28.04	3011
Pulse: 275ns, IFilt: 5.0MHz; ppPol: HH HV VV	vh/hh(dB)	-NaN	-3.77	-12.17	-9.07	204.
TxPol: HHVV, PRF: 20 10 20 10 kHz	hv/vv(dB)	-NaN	-20.42	-40.26	-38.78	140.
Range: Delay 75m, Spacing 15m, Gates 100	hnjmp(dB)	-2.16	2.41	-0.10	-8.59	14.1
Ave. Pulses: 84, Rng/Prof Aspect@90m/s: 5.8	vnjmp(dB)	-2.48	2.13	-0.10	-8.62	14.1



IHOP 2002 (dual-antenna config, modes 1,3,4,7) Data (cal: 49.0,50.0)

W2002-06-21-15-40-25 - PPMAG4	Min	Max	Mean	Std	Varc%
IRIG:1,UTC: 15:40:12.02 to 16:35:14.72, Dur: 3302s	-68.03	-64.77	-66.38	-76.36	10.1
TimeLngth: 3302.70s, TimeInt: 28ms (34.6pps)	-67.35	-63.65	-65.36	-75.30	10.1
TimeCor=-13.0s, DSPDif(mn,min,mx):29,28,322	-15.41	-4.68	-8.11	-15.32	19.0
PPS(min,max,std): 25,36,2.21	-13.59	-2.58	-5.28	-11.99	21.3
Prof: 19014 to 133361, NumProf(t/r): 114347/17069	ppN(m/s)	-12.21	12.00	-0.11	4.12
ProcTime/Recs: 16:13:02-16:21:15/68276-85344	ppT(m/s)	-96.50	94.77	-0.86	32.55
MxAcQtime: 33ms; DRate: 193.8KB/s; Flags: 0, 0, 0	hh/vv(dB)	-NaN	40.67	3.25	28.04 3011
Pulse: 275ns, IFilt: 5.0MHz; ppPol: HH HV VV	vh/hh(dB)	-NaN	-3.77	-12.17	-9.07 204.
TxPol: HHVV, PRF: 20 10 20 10 kHz	hv/vv(dB)	-NaN	-20.42	-40.26	-38.78 140.
Range: Delay 75m, Spacing 15m, Gates 100	hn/jmp(dB)	-2.16	2.41	-0.10	-8.59 14.1
Ave. Pulses: 84, Rng/Prof Aspect@90m/s: 5.8	vn/jmp(dB)	-2.48	2.13	-0.10	-8.62 14.1



IHOP 2002 (dual-antenna config, modes 1,3,4,7) Data (cal: 49.0,50.0)

	Min	Max	Mean	Std	Varc%	
W2002-06-21-15-40-25 - PPMAG4						
IRIG:1,UTC: 15:40:12.02 to 16:35:14.72, Dur: 3302s	hhN (dB)	-68.03	-64.77	-66.38	-76.36	10.1
TimeLngth: 3302.70s, TimeInt: 28ms (34.6pps)	vvN (dB)	-67.35	-63.65	-65.36	-75.30	10.1
TimeCor=-13.0s, DSPDif(mn,min,mx):29,28,322	hhL (dB)	-15.41	-4.68	-8.11	-15.32	19.0
PPS(min,max,std): 25,36,2.21	vvL (dB)	-13.59	-2.58	-5.28	-11.99	21.3
Prof: 19014 to 133361, NumProf(t/r): 114347/17069	ppN (m/s)	-12.21	12.00	-0.11	4.12	
ProcTime/Recs: 16:13:02-16:21:15/68276-85344	ppT (m/s)	-96.50	94.77	-0.86	32.55	
MxACQtime: 33ms; DRate: 193.8KB/s; Flags: 0, 0, 0	hh/vv (dB)	-NaN	40.67	3.25	28.04	3011
Pulse: 275ns, IFfilt: 5.0MHz; ppPol: HH HV VV	vh/hh (dB)	-NaN	-3.77	-12.17	-9.07	204.
TxPol: HHVV, PRF: 20 10 20 10 kHz	hv/vv (dB)	-NaN	-20.42	-40.26	-38.78	140.
Range: Delay 75m, Spacing 15m, Gates 100	hn/jmp (dB)	-2.16	2.41	-0.10	-8.59	14.1
Ave. Pulses: 84, Rng/Prof Aspect@90m/s: 5.8	vn/jmp (dB)	-2.48	2.13	-0.10	-8.62	14.1