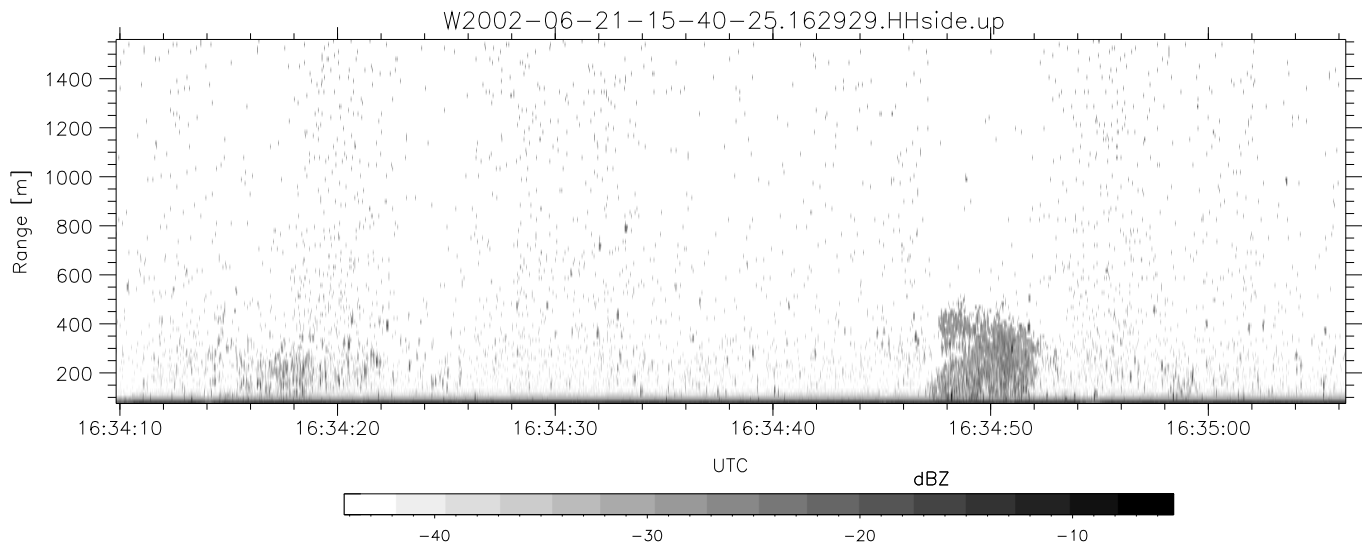
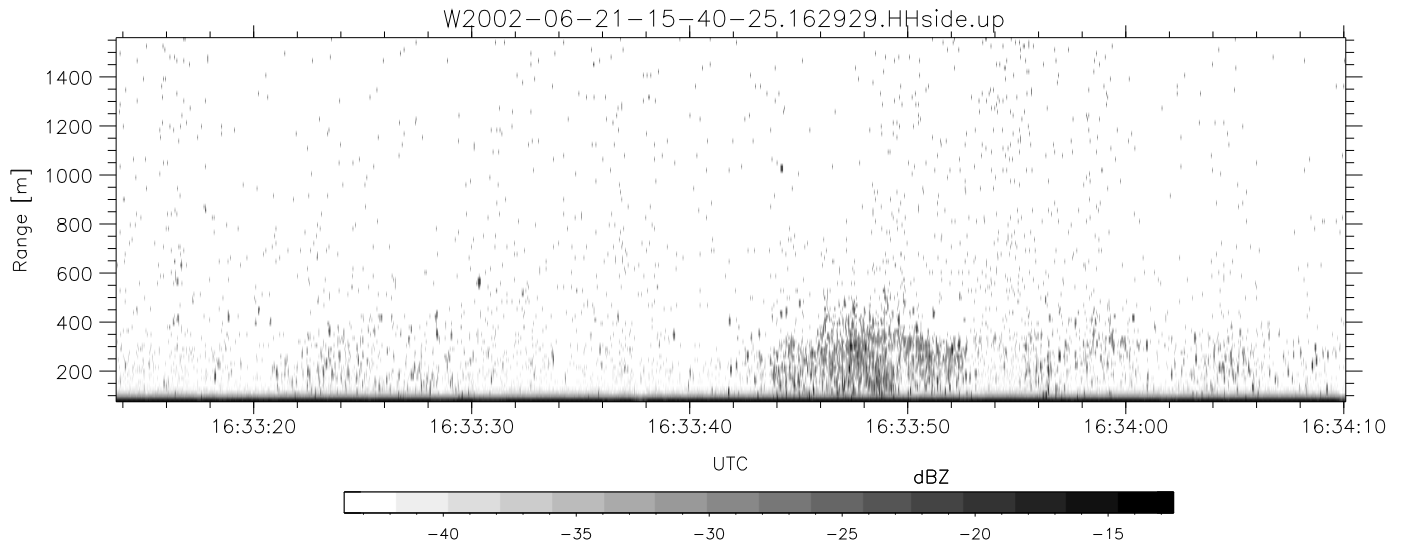
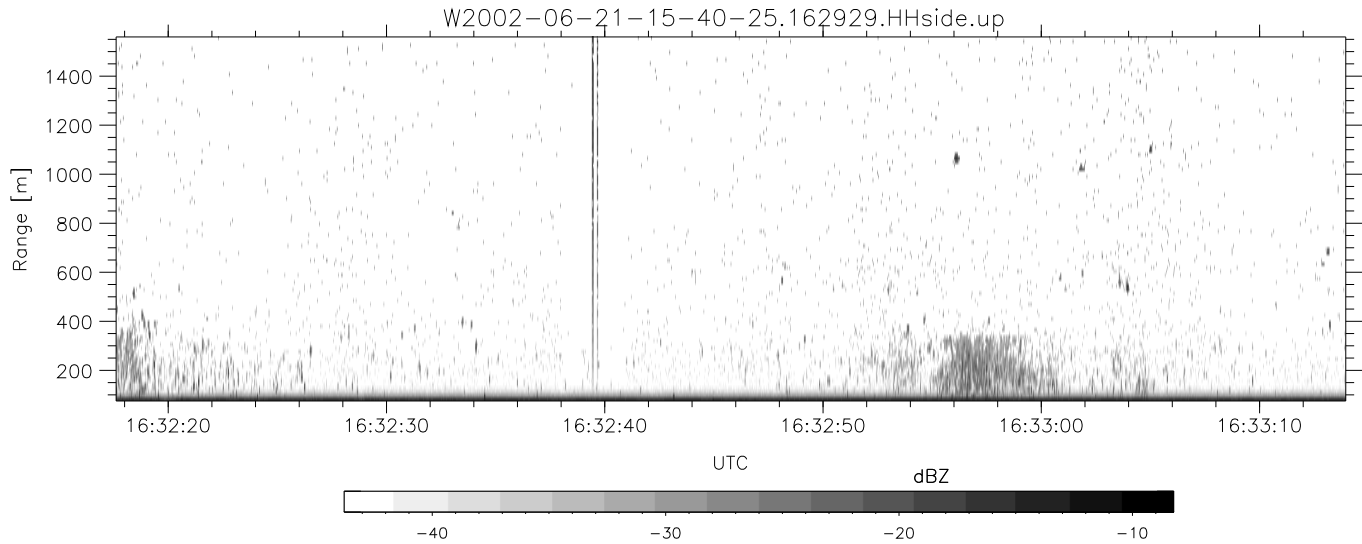


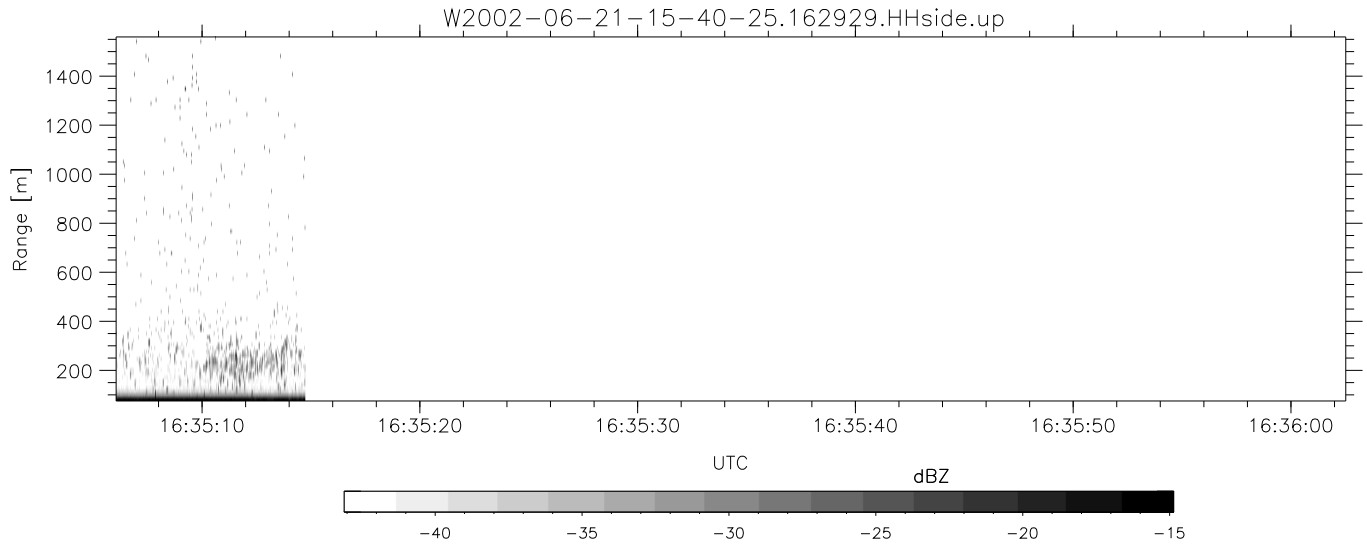
IHOP 2002 (dual-antenna config, modes 1,3,4,7) Data (cal: 49.0,50.0)

	Min	Max	Mean	Std	Varc%	
W2002-06-21-15-40-25 - PPMAG4						
IRIG:1,UTC: 15:40:12.02 to 16:35:14.72, Dur: 3302s	hhN (dB)	-68.18	-64.52	-66.53	-76.52	10.0
TimeLngth: 3302.70s, TimeInt: 28ms (34.6pps)	vvN (dB)	-67.62	-63.57	-65.44	-75.35	10.2
TimeCor=-13.0s, DSPDif(mn,min,mx):28,28,306	hhL (dB)	-10.80	-4.38	-5.72	-14.13	14.4
PPS(min,max,std): 23,36,2.23	vvL (dB)	-9.16	-2.00	-4.50	-10.95	22.7
Prof: 19014 to 133361, NumProf(t/r): 114347/11933	ppN (m/s)	-12.30	11.98	-0.04	4.15	
ProcTime/Recs: 16:29:29-16:35:14/102414-114346	ppT (m/s)	-97.19	94.64	-0.31	32.78	
MxAcQtime: 33ms; DRate: 193.8KB/s; Flags: 0, 0, 0	hh/vv (dB)	-NaN	49.80	22.60	34.80	1659
Pulse: 275ns, IFilt: 5.0MHz; ppPol: HH HV VV	vh/hh (dB)	-99.00	-99.00	-99.00	-99.00	-99.
TxPol: HHVV, PRF: 20 10 20 10 kHz	hv/vv (dB)	-NaN	-33.68	-54.31	-47.37	495.
Range: Delay 75m, Spacing 15m, Gates 100	hn/jmp (dB)	-2.95	2.20	-0.08	-8.63	14.0
Ave. Pulses: 84, Rng/Prof Aspect@90m/s: 5.8	vn/jmp (dB)	-2.32	2.22	-0.09	-8.53	14.3



IHOP 2002 (dual-antenna config, modes 1,3,4,7) Data (cal: 49.0,50.0)

	Min	Max	Mean	Std	Varc%	
W2002-06-21-15-40-25 - PPMAG4						
IRIG:1,UTC: 15:40:12.02 to 16:35:14.72, Dur: 3302s	hhN (dB)	-68.18	-64.52	-66.53	-76.52	10.0
TimeLngth: 3302.70s, TimeInt: 28ms (34.6pps)	vvN (dB)	-67.62	-63.57	-65.44	-75.35	10.2
TimeCor=-13.0s, DSPDif(mn,min,mx):28,28,306	hhL (dB)	-10.80	-4.38	-5.72	-14.13	14.4
PPS(min,max,std): 23,36,2.23	vvL (dB)	-9.16	-2.00	-4.50	-10.95	22.7
Prof: 19014 to 133361, NumProf(t/r): 114347/11933	ppN (m/s)	-12.30	11.98	-0.04	4.15	
ProcTime/Recs: 16:29:29-16:35:14/102414-114346	ppT (m/s)	-97.19	94.64	-0.31	32.78	
MxACQtime: 33ms; DRate: 193.8KB/s; Flags: 0, 0, 0	hh/vv (dB)	-NaN	49.80	22.60	34.80	1659
Pulse: 275ns, IFfilt: 5.0MHz; ppPol: HH HV VV	vh/hh (dB)	-99.00	-99.00	-99.00	-99.00	-99.
TxPol: HHVV, PRF: 20 10 20 10 kHz	hv/vv (dB)	-NaN	-33.68	-54.31	-47.37	495.
Range: Delay 75m, Spacing 15m, Gates 100	hnjmp (dB)	-2.95	2.20	-0.08	-8.63	14.0
Ave. Pulses: 84, Rng/Prof Aspect@90m/s: 5.8	vnjmp (dB)	-2.32	2.22	-0.09	-8.53	14.3



IHOP 2002 (dual-antenna config, modes 1,3,4,7) Data (cal: 49.0,50.0)

W2002-06-21-15-40-25 - PPMAG4						
IRIG:1,UTC: 15:40:12.02 to 16:35:14.72, Dur: 3302s	hhN(dB)	Min	Max	Mean	Std	Varc%
TimeLngth: 3302.70s, TimeInt: 28ms (34.6pps)	vvN(dB)	-68.18	-64.52	-66.53	-76.52	10.0
TimeCor=-13.0s, DSPDif(mn,min,mx):28,28,306	hhL(dB)	-67.62	-63.57	-65.44	-75.35	10.2
PPS(min,max,std): 23,36,2.23	vvL(dB)	-10.80	-4.38	-5.72	-14.13	14.4
Prof: 19014 to 133361, NumProf(t/r): 114347/11933	ppN(m/s)	-9.16	-2.00	-4.50	-10.95	22.7
ProcTime/Recs: 16:29:29-16:35:14/102414-114346	ppT(m/s)	-12.30	11.98	-0.04	4.15	
MxACQtime: 33ms; DRate: 193.8KB/s; Flags: 0, 0, 0	hh/vv(dB)	-97.19	94.64	-0.31	32.78	
Pulse: 275ns, IFfilt: 5.0MHz; ppPol: HH HV VV	vh/vv(dB)	-NaN	49.80	22.60	34.80	1659
TxPol: HHVV, PRF: 20 10 20 10 kHz	hh/vv(dB)	-99.00	-99.00	-99.00	-99.00	-99.
Range: Delay 75m, Spacing 15m, Gates 100	hv/vv(dB)	-NaN	-33.68	-54.31	-47.37	495.
Ave. Pulses: 84, Rng/Prof Aspect@90m/s: 5.8	hnjmp(dB)	-2.95	2.20	-0.08	-8.63	14.0
	vnjmp(dB)	-2.32	2.22	-0.09	-8.53	14.3