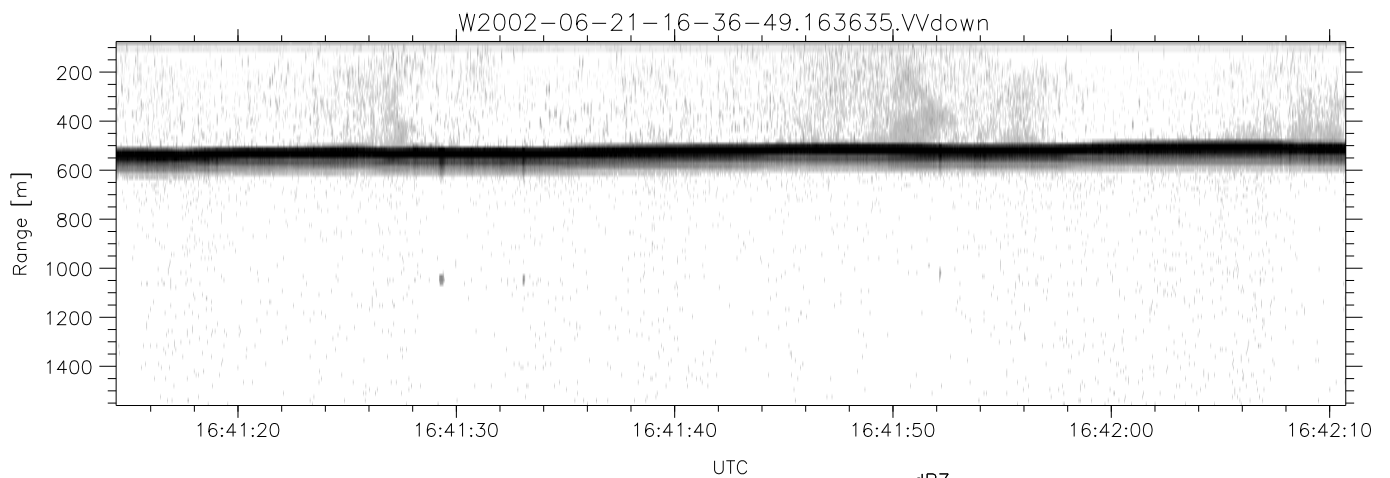
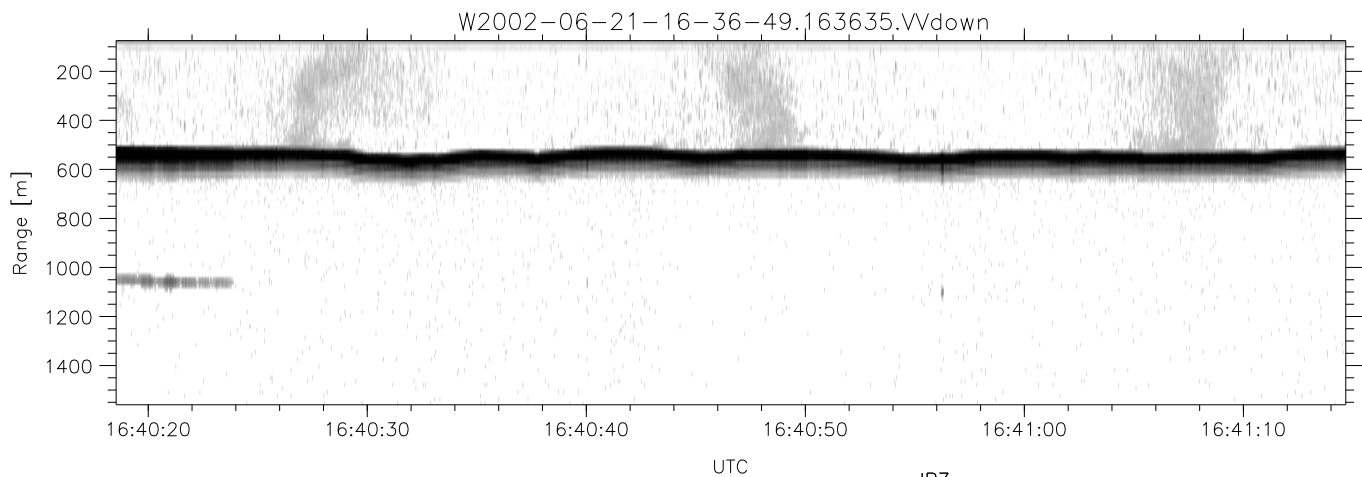
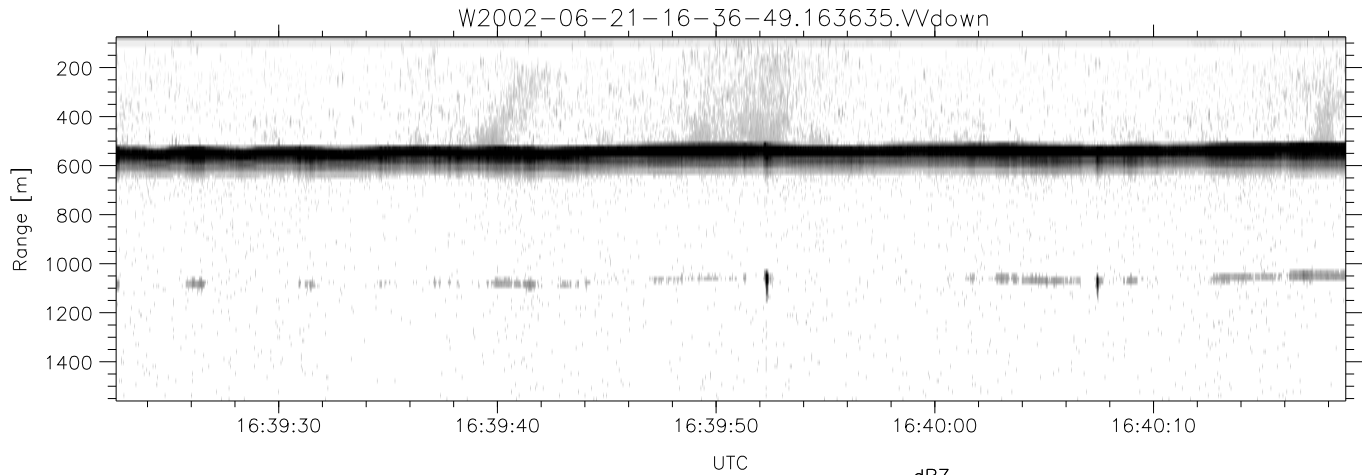


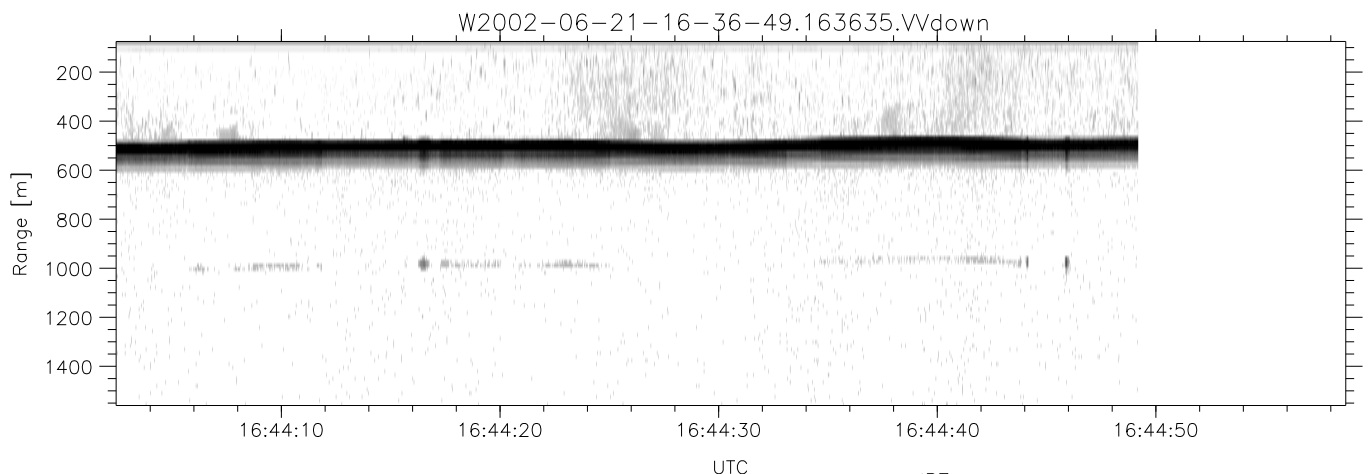
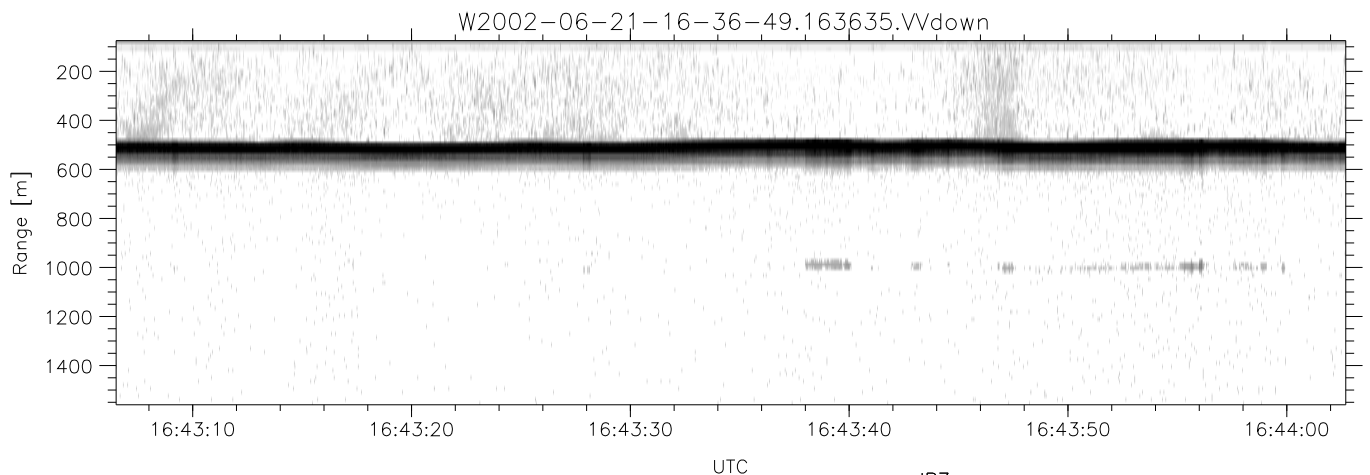
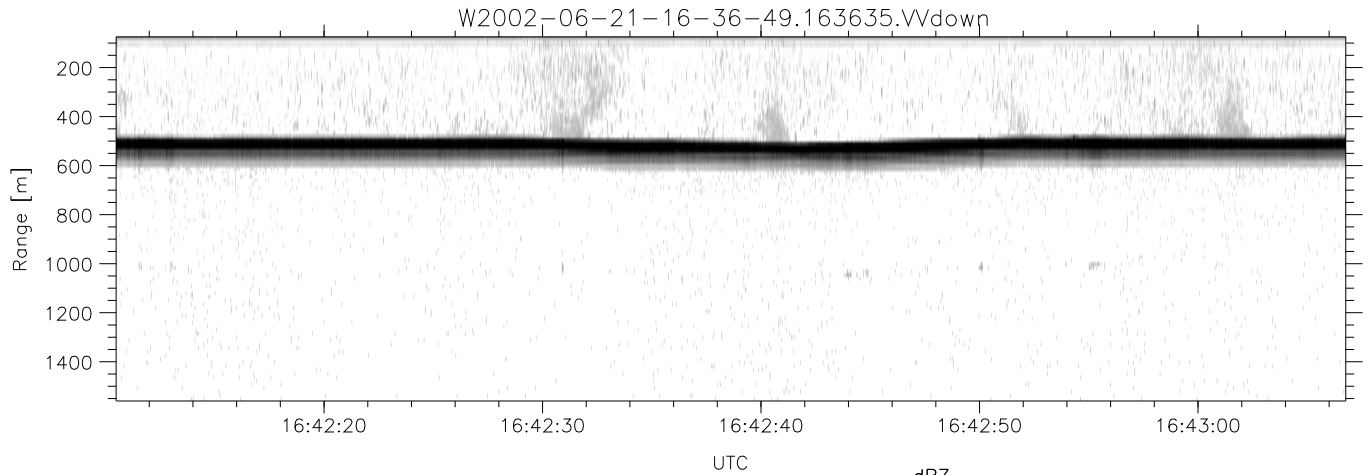
IHOP 2002 (dual-antenna config, modes 1,3,4,7) Data (cal: 49.0,50.0)

	Min	Max	Mean	Std	Varc%	
W2002-06-21-16-36-49 - PPMAG4						
IRIG:1,UTC: 16:36:35.09 to 16:49:51.75, Dur: 796s	hhN (dB)	-68.17	-62.91	-66.56	-75.94	11.5
TimeLngth: 796.66s, TimeInt: 28ms (34.5pps)	vvN (dB)	-67.43	-61.05	-65.47	-74.64	12.1
TimeCor=-13.0s, DSPDif(mn,min,mx):28,28,357	hhL (dB)	-10.20	-4.19	-6.34	-15.47	12.2
PPS(min,max,std): 19,36,2.33	vvL (dB)	-9.16	-1.62	-4.49	-11.34	20.6
Prof: 369 to 27848, NumProf(t/r): 27479/17069	ppN (m/s)	-12.45	12.72	0.03	4.12	
ProcTime/Recs: 16:36:35-16:44:49/0-17068	ppT (m/s)	-98.39	100.46	0.20	32.52	
MxACQtime: 33ms; DRate: 193.1KB/s; Flags: 0, 0, 0	hh/vv (dB)	-NaN	41.71	15.88	30.18	2689
Pulse: 275ns, IFfilt: 5.0MHz; ppPol: HH HV VV	vh/hh (dB)	-43.96	-32.93	-36.07	-36.21	96.8
TxPol: HHVV, PRF: 20 10 20 10 kHz	hv/vv (dB)	-NaN	-29.74	-54.39	-45.62	753.
Range: Delay 75m, Spacing 15m, Gates 100	hn/jmp (dB)	-2.00	2.79	0.18	-8.32	14.1
Ave. Pulses: 84, Rng/Prof Aspect@90m/s: 5.7	vn/jmp (dB)	-2.42	2.33	0.20	-8.30	14.1



IHOP 2002 (dual-antenna config, modes 1,3,4,7) Data (cal: 49.0,50.0)

	Min	Max	Mean	Std	Varc%	
W2002-06-21-16-36-49 - PPMAG4						
IRIG:1,UTC: 16:36:35.09 to 16:49:51.75, Dur: 796s	hhN (dB)	-68.17	-62.91	-66.56	-75.94	11.5
TimeLngth: 796.66s, TimeInt: 28ms (34.5pps)	vvN (dB)	-67.43	-61.05	-65.47	-74.64	12.1
TimeCor=-13.0s, DSPDif(mn,min,mx):28,28,357	hhL (dB)	-10.20	-4.19	-6.34	-15.47	12.2
PPS(min,max,std): 19,36,2.33	vvL (dB)	-9.16	-1.62	-4.49	-11.34	20.6
Prof: 369 to 27848, NumProf(t/r): 27479/17069	ppN (m/s)	-12.45	12.72	0.03	4.12	
ProcTime/Recs: 16:36:35-16:44:49/0-17068	ppT (m/s)	-98.39	100.46	0.20	32.52	
MxACQtime: 33ms; DRate: 193.1KB/s; Flags: 0, 0, 0	hh/vv (dB)	-NaN	41.71	15.88	30.18	2689
Pulse: 275ns, IFilt: 5.0MHz; ppPol: HH HV VV	vh/hh (dB)	-43.96	-32.93	-36.07	-36.21	96.8
TxPol: HHVV, PRF: 20 10 20 10 kHz	hv/vv (dB)	-NaN	-29.74	-54.39	-45.62	753.
Range: Delay 75m, Spacing 15m, Gates 100	hnjmp (dB)	-2.00	2.79	0.18	-8.32	14.1
Ave. Pulses: 84, Rng/Prof Aspect@90m/s: 5.7	vnjmp (dB)	-2.42	2.33	0.20	-8.30	14.1



IHOP 2002 (dual-antenna config, modes 1,3,4,7) Data (cal: 49.0,50.0)

W2002-06-21-16-36-49 - PPMAG4
 IRIG:1,UTC: 16:36:35.09 to 16:49:51.75, Dur: 796s
 TimeLngth: 796.66s, TimeInt: 28ms (34.5pps)
 TimeCor=-13.0s, DSPDif(mn,min,mx):28,28,357
 PPS(min,max,std): 19,36,2.33
 Prof: 369 to 27848, NumProf(t/r): 27479/17069
 ProcTime/Recs: 16:36:35-16:44:49/0-17068
 MxACQtime: 33ms; DRate: 193.1KB/s; Flags: 0, 0, 0
 Pulse: 275ns, IFfilt: 5.0MHz; ppPol: HH HV VV
 TxPol: HHVV, PRF: 20 10 20 10 kHz
 Range: Delay 75m, Spacing 15m, Gates 100
 Ave. Pulses: 84, Rng/Prof Aspect@90m/s: 5.7

	Min	Max	Mean	Std	Varc%
hhN(dB)	-68.17	-62.91	-66.56	-75.94	11.5
vvN(dB)	-67.43	-61.05	-65.47	-74.64	12.1
hhL(dB)	-10.20	-4.19	-6.34	-15.47	12.2
vvL(dB)	-9.16	-1.62	-4.49	-11.34	20.6
ppN(m/s)	-12.45	12.72	0.03	4.12	
ppT(m/s)	-98.39	100.46	0.20	32.52	
hh/vv(dB)	-NaN	41.71	15.88	30.18	2689
vh/hh(dB)	-43.96	-32.93	-36.07	-36.21	96.8
hv/vv(dB)	-NaN	-29.74	-54.39	-45.62	753.
hnjmp(dB)	-2.00	2.79	0.18	-8.32	14.1
vnjmp(dB)	-2.42	2.33	0.20	-8.30	14.1