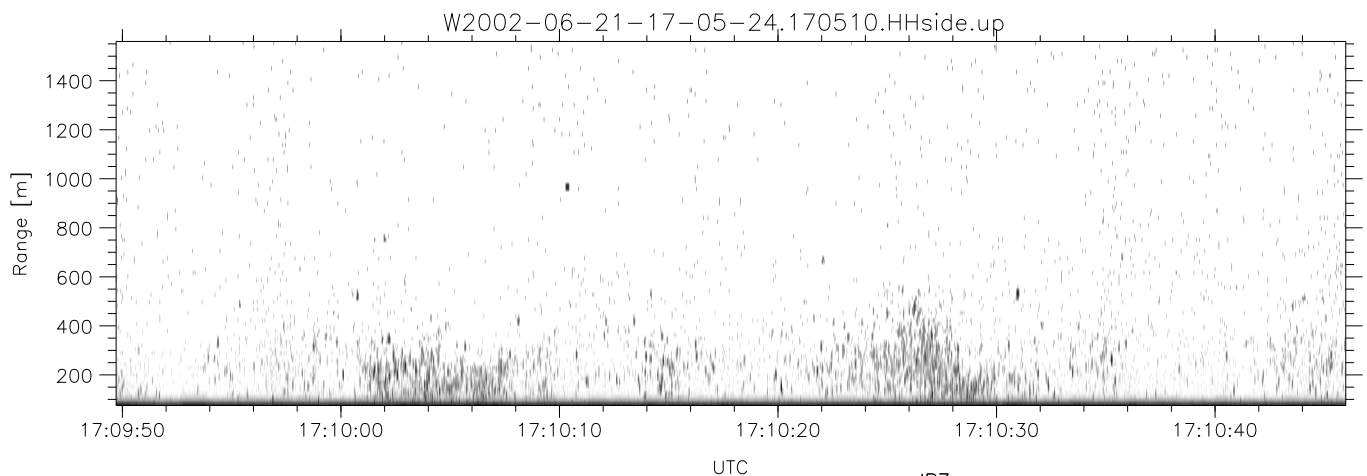
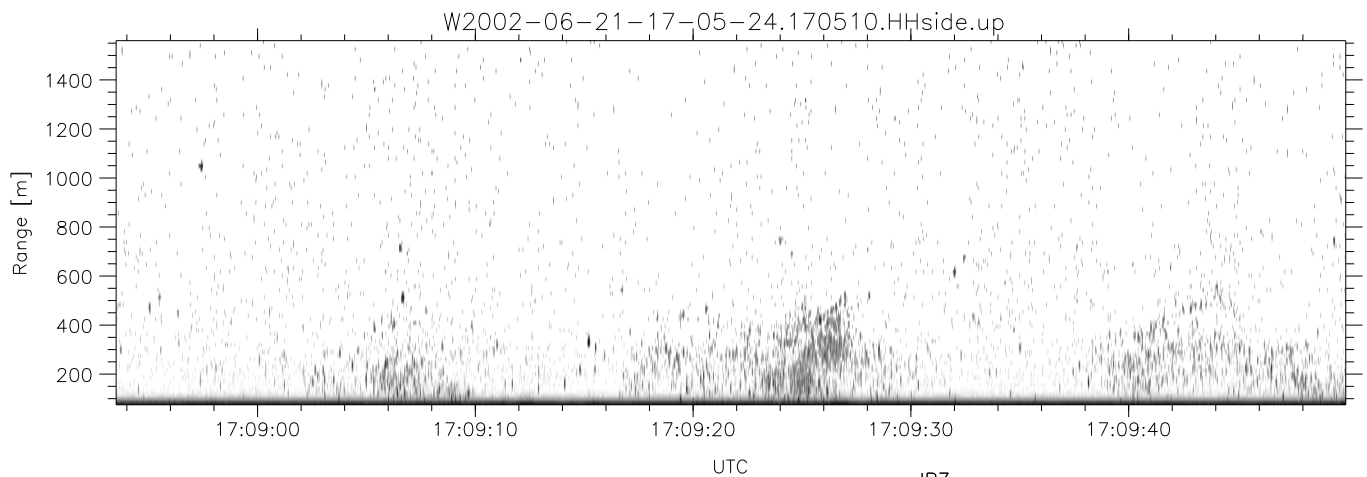
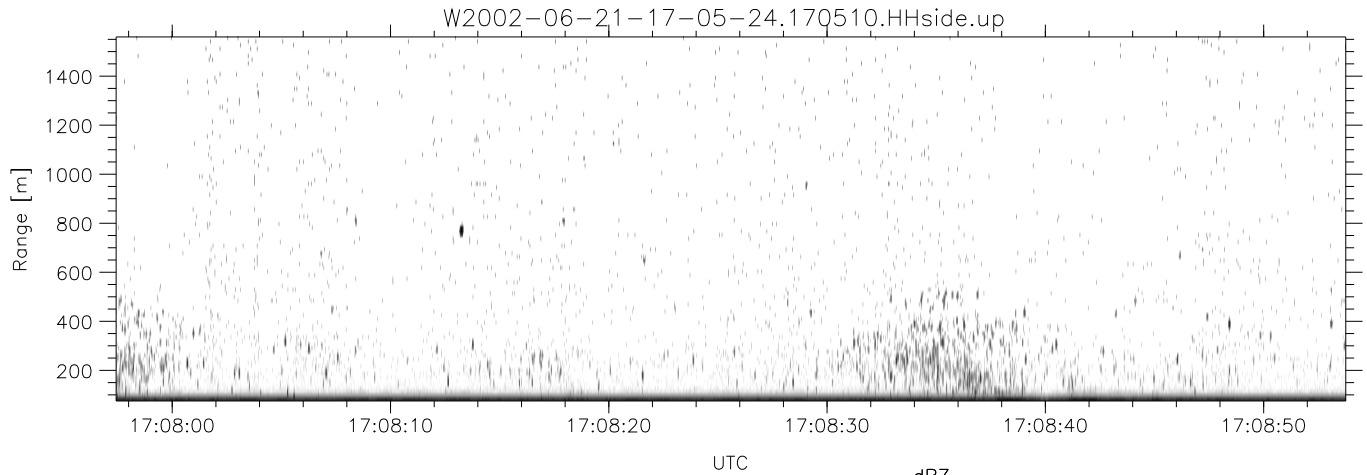


IHOP 2002 (dual-antenna config, modes 1,3,4,7) Data (cal: 49.0,50.0)

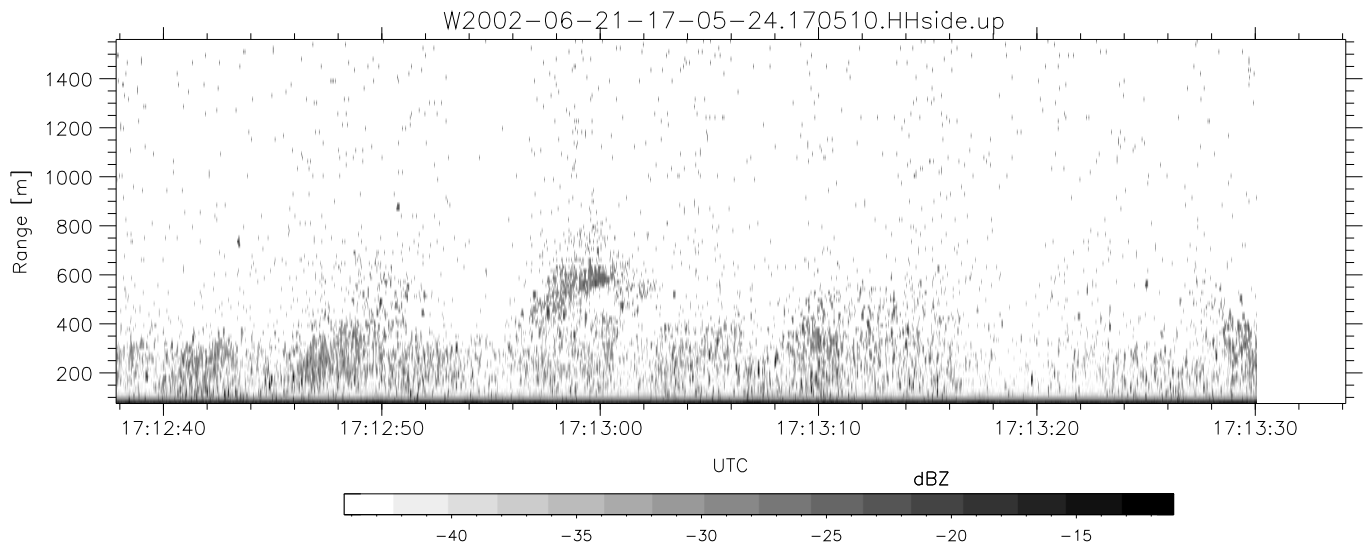
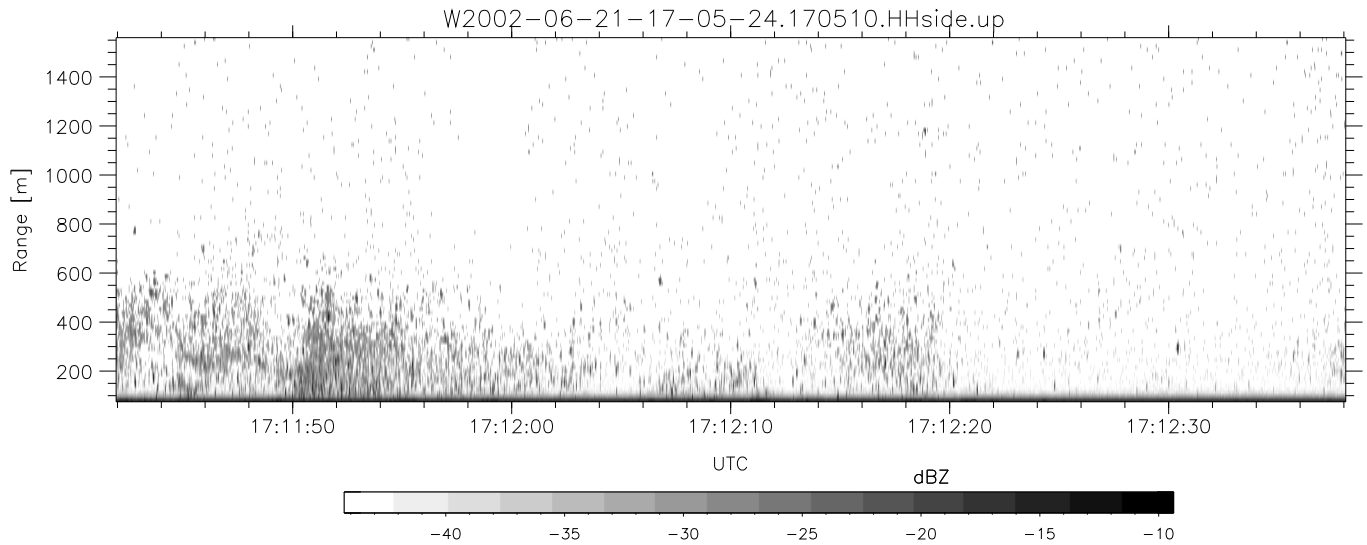
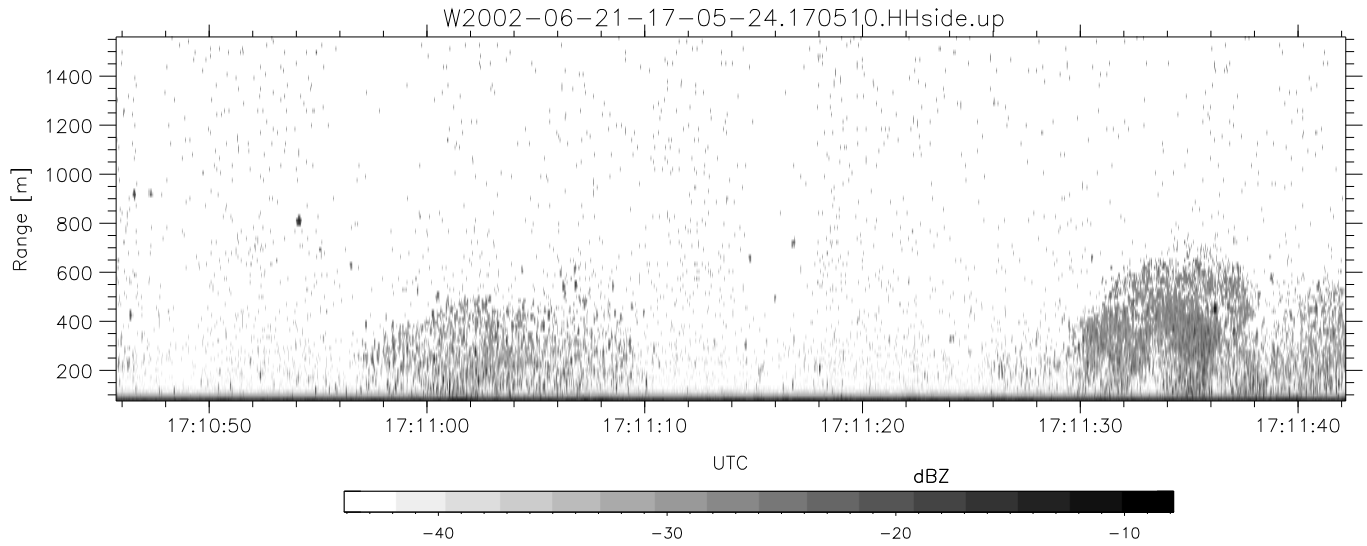
W2002-06-21-17-05-24 - PPMAG4
 IRIG:1,UTC: 17:05:10.09 to 17:18:13.56, Dur: 783s
 TimeLngth: 783.47s, TimeInt: 29ms (34.1pps)
 TimeCor=-13.0s, DSPDif(mn,min,mx):29,28,316
 PPS(min,max,std): 20,36,2.50
 Prof: 386 to 27123, NumProf(t/r): 26737/17069
 ProcTime/Recs: 17:05:10-17:13:30/0-17068
 MxACQtime: 33ms; DRate: 191.0KB/s; Flags: 0, 0, 0
 Pulse: 275ns, IFfilt: 5.0MHz; ppPol: HH HV VV
 TxPol: HHVV, PRF: 20 10 20 10 kHz
 Range: Delay 75m, Spacing 15m, Gates 100
 Ave. Pulses: 84, Rng/Prof Aspect@90m/s: 5.7

	Min	Max	Mean	Std	Varc%
hhN(dB)	-68.44	-65.02	-66.57	-76.41	10.4
vvN(dB)	-67.63	-64.11	-65.62	-75.58	10.1
hhL(dB)	-11.14	-3.81	-6.56	-14.54	15.9
vvL(dB)	-10.84	-1.68	-4.90	-10.83	25.6
ppN(m/s)	-12.06	12.51	-0.06	4.18	
ppT(m/s)	-95.27	98.80	-0.49	33.03	
hh/vv(dB)	-NaN	43.56	19.22	28.98	945.
vh/hh(dB)	-NaN	-33.44	-38.49	-36.10	173.
hv/vv(dB)	-NaN	-35.20	-54.08	-46.16	619.
hnjmp(dB)	-2.29	2.29	-0.07	-8.57	14.1
vnjmp(dB)	-2.37	2.16	-0.11	-8.61	14.1



IHOP 2002 (dual-antenna config, modes 1,3,4,7) Data (cal: 49.0,50.0)

W2002-06-21-17-05-24 - PPMAG4	Min	Max	Mean	Std	Varc%	
IRIG:1,UTC: 17:05:10.09 to 17:18:13.56, Dur: 783s	hhN(dB)	-68.44	-65.02	-66.57	-76.41	10.4
TimeLngth: 783.47s, TimeInt: 29ms (34.1pps)	vvN(dB)	-67.63	-64.11	-65.62	-75.58	10.1
TimeCor=-13.0s, DSPDif(mn,min,mx):29,28,316	hhL(dB)	-11.14	-3.81	-6.56	-14.54	15.9
PPS(min,max,std): 20,36,2.50	vvL(dB)	-10.84	-1.68	-4.90	-10.83	25.6
Prof: 386 to 27123, NumProf(t/r): 26737/17069	ppN(m/s)	-12.06	12.51	-0.06	4.18	
ProcTime/Recs: 17:05:10-17:13:30/0-17068	ppT(m/s)	-95.27	98.80	-0.49	33.03	
MxACQtime: 33ms; DRate: 191.0KB/s; Flags: 0, 0, 0	hh/vv(dB)	-NaN	43.56	19.22	28.98	945.
Pulse: 275ns, IFfilt: 5.0MHz; ppPol: HH HV VV	vh/hh(dB)	-NaN	-33.44	-38.49	-36.10	173.
TxPol: HHVV, PRF: 20 10 20 10 kHz	hv/vv(dB)	-NaN	-35.20	-54.08	-46.16	619.
Range: Delay 75m, Spacing 15m, Gates 100	hnjmp(dB)	-2.29	2.29	-0.07	-8.57	14.1
Ave. Pulses: 84, Rng/Prof Aspect@90m/s: 5.7	vnjmp(dB)	-2.37	2.16	-0.11	-8.61	14.1



IHOP 2002 (dual-antenna config, modes 1,3,4,7) Data (cal: 49.0,50.0)

W2002-06-21-17-05-24 - PPMAG4
 IRIG:1,UTC: 17:05:10.09 to 17:18:13.56, Dur: 783s
 TimeLngth: 783.47s, TimeInt: 29ms (34.1pps)
 TimeCor=-13.0s, DSPDif(mn,min,mx):29,28,316
 PPS(min,max,std): 20,36,2.50
 Prof: 386 to 27123, NumProf(t/r): 26737/17069
 ProcTime/Recs: 17:05:10-17:13:30/0-17068
 MxAcQtime: 33ms; DRate: 191.0KB/s; Flags: 0, 0, 0
 Pulse: 275ns, IFilt: 5.0MHz; ppPol: HH HV VV
 TxPol: HHVV, PRF: 20 10 20 10 kHz
 Range: Delay 75m, Spacing 15m, Gates 100
 Ave. Pulses: 84, Rng/Prof Aspect@90m/s: 5.7

	Min	Max	Mean	Std	Varc%
hhN(dB)	-68.44	-65.02	-66.57	-76.41	10.4
vvN(dB)	-67.63	-64.11	-65.62	-75.58	10.1
hhL(dB)	-11.14	-3.81	-6.56	-14.54	15.9
vvL(dB)	-10.84	-1.68	-4.90	-10.83	25.6
ppN(m/s)	-12.06	12.51	-0.06	4.18	
ppT(m/s)	-95.27	98.80	-0.49	33.03	
hh/vv(dB)	-NaN	43.56	19.22	28.98	945.
vh/hh(dB)	-NaN	-33.44	-38.49	-36.10	173.
hv/vv(dB)	-NaN	-35.20	-54.08	-46.16	619.
hnjmp(dB)	-2.29	2.29	-0.07	-8.57	14.1
vnjmp(dB)	-2.37	2.16	-0.11	-8.61	14.1