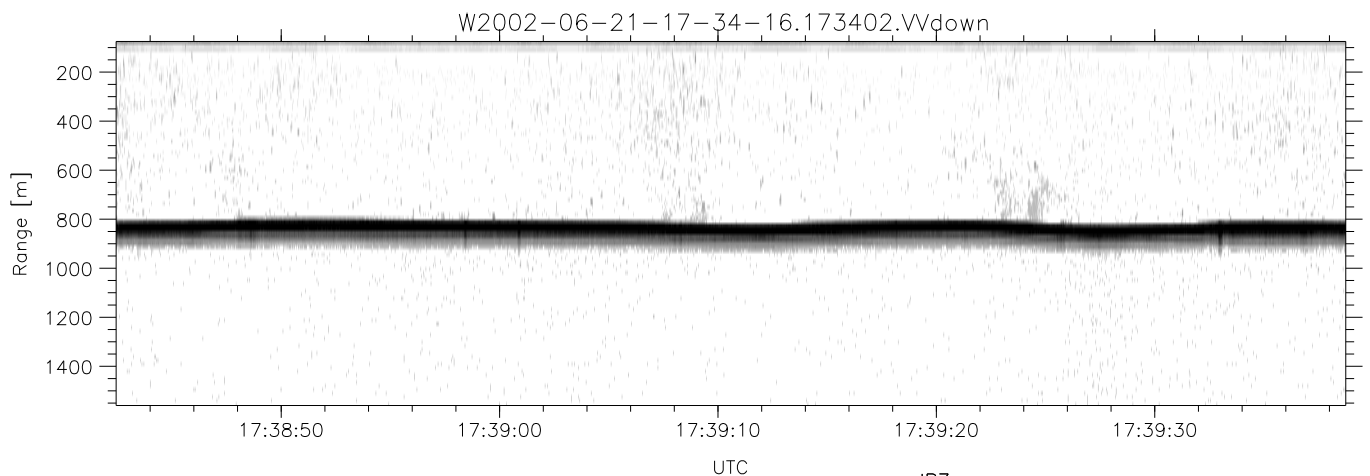
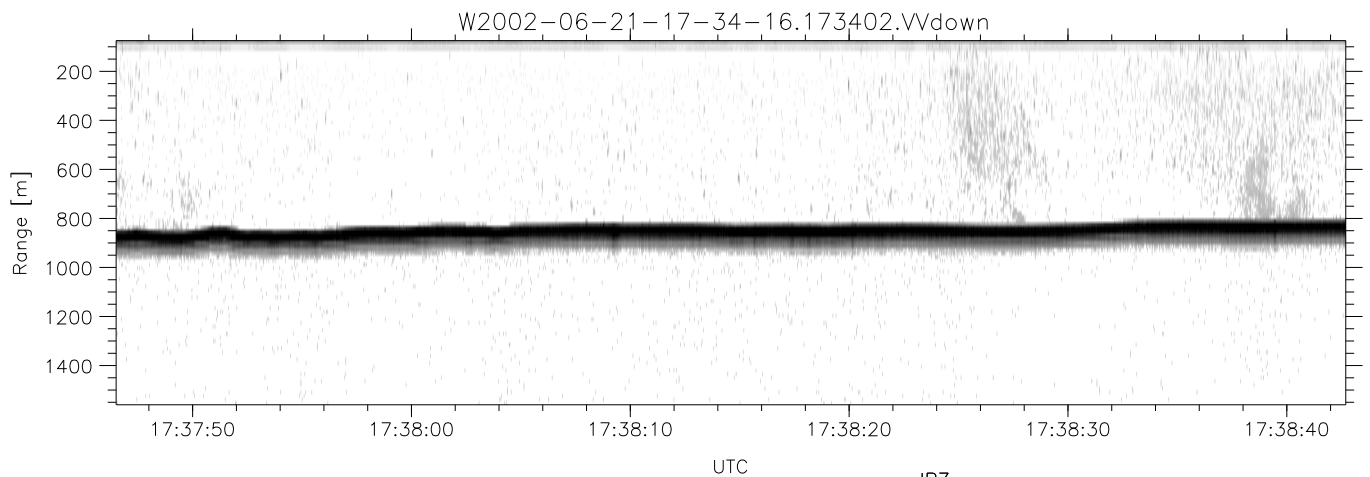
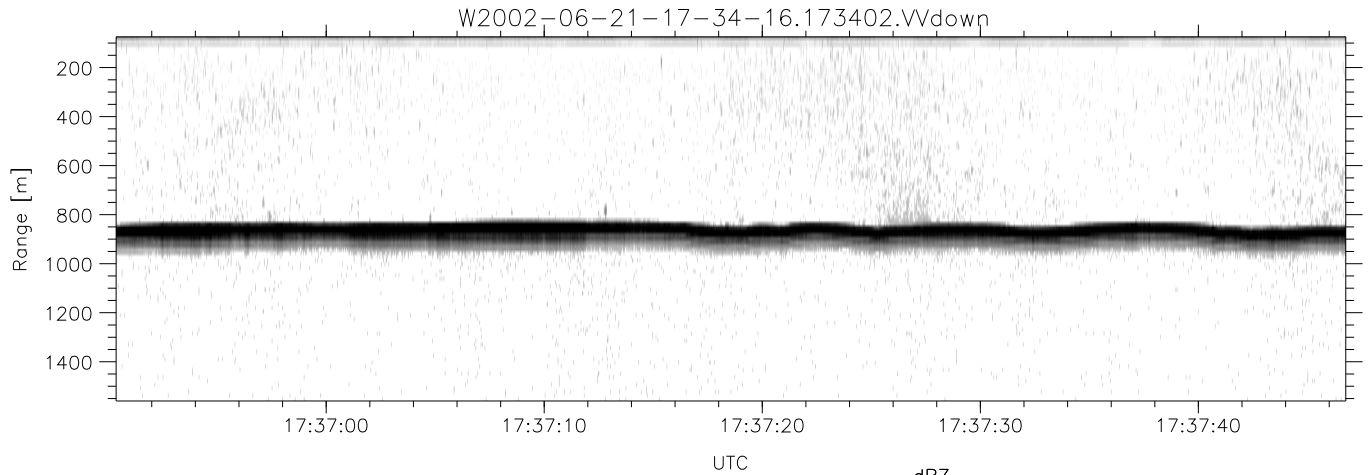


IHOP 2002 (dual-antenna config, modes 1,3,4,7) Data (cal: 49.0,50.0)

W2002-06-21-17-34-16 - PPMAG4
 IRIG:1,UTC: 17:34:02.69 to 17:46:31.07, Dur: 749s
 TimeLngth: 748.38s, TimeInt: 29ms (34.1pps)
 TimeCor=-13.0s, DSPDif(mn,min,mx):29,28,404
 PPS(min,max,std): 23,36,2.26
 Prof: 2329 to 27843, NumProf(t/r): 25514/17069
 ProcTime/Recs: 17:34:02-17:42:23/0-17068
 MxACQtime: 33ms; DRate: 190.8KB/s; Flags: 0, 0, 0
 Pulse: 275ns, IFfilt: 5.0MHz; ppPol: HH HV VV
 TxPol: HHVV, PRF: 20 10 20 10 kHz
 Range: Delay 75m, Spacing 15m, Gates 100
 Ave. Pulses: 84, Rng/Prof Aspect@90m/s: 5.7

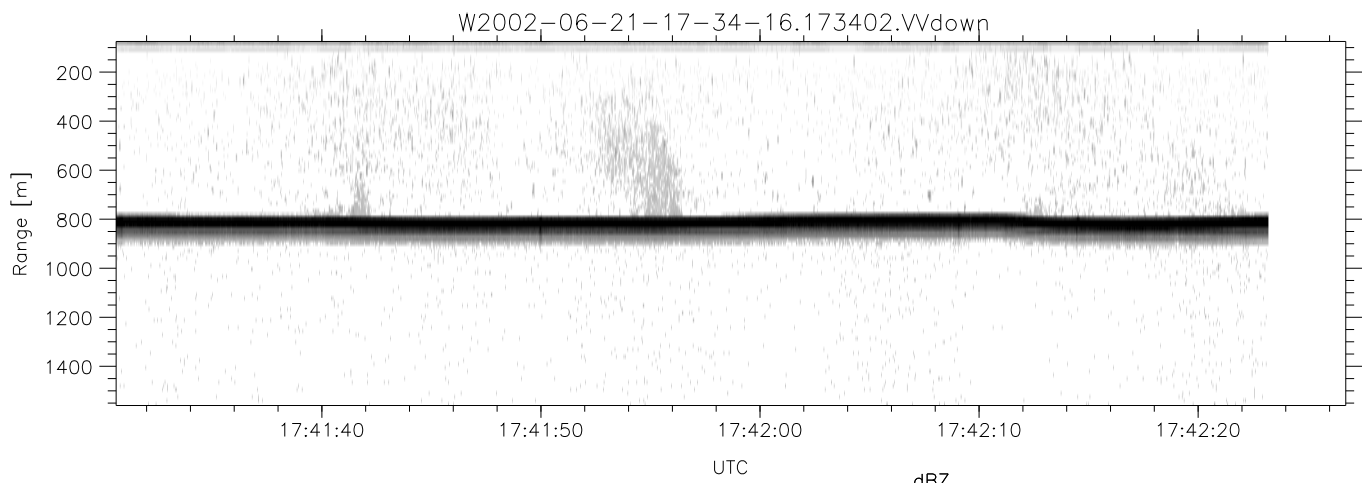
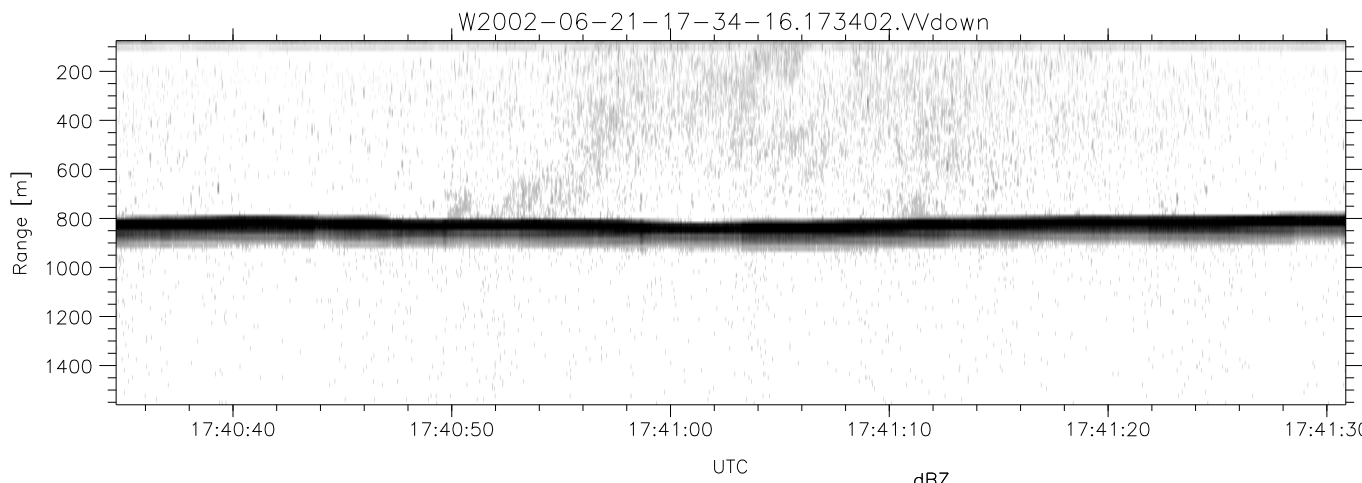
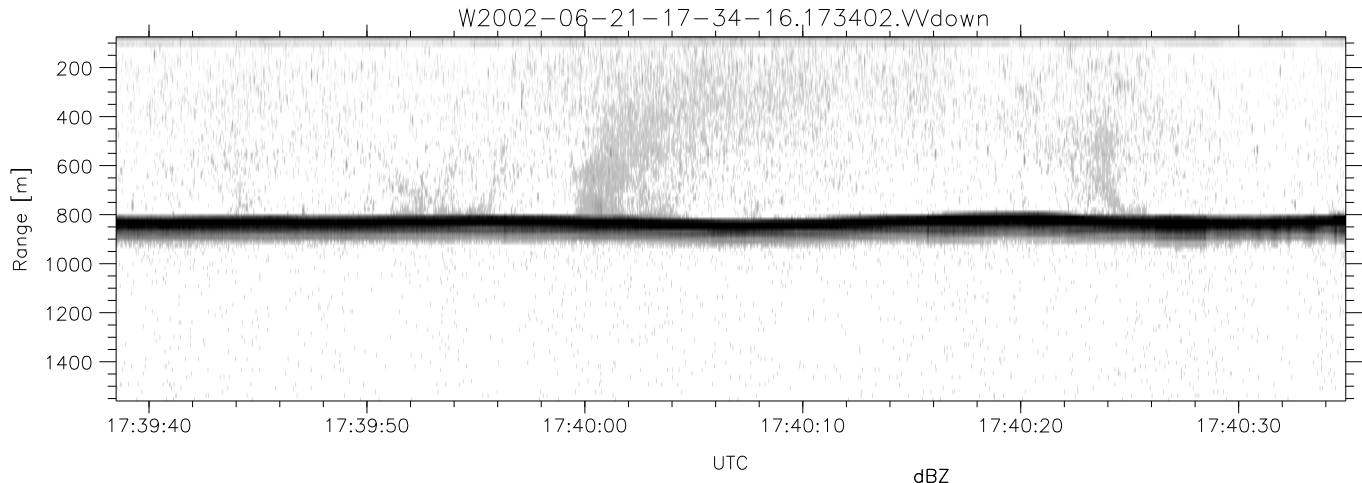
	Min	Max	Mean	Std	Varc%
hhN(dB)	-68.26	-63.64	-66.16	-75.48	11.7
vvN(dB)	-67.32	-62.32	-65.48	-74.60	12.2
hhL(dB)	-13.09	-3.26	-6.54	-10.26	42.4
vvL(dB)	-8.72	-0.69	-2.64	-8.56	25.6
ppN(m/s)	-12.36	12.81	0.01	4.11	
ppT(m/s)	-97.67	101.21	0.08	32.47	
hh/vv(dB)	-NaN	37.74	17.30	29.84	1794
vh/hh(dB)	-NaN	-34.73	-37.73	-38.65	81.0
hv/vv(dB)	-NaN	-31.56	-60.05	-45.09	3130
hnjmp(dB)	-2.15	2.16	0.17	-8.35	14.1
vnjmp(dB)	-2.19	2.31	0.20	-8.27	14.2



IHOP 2002 (dual-antenna config, modes 1,3,4,7) Data (cal: 49.0,50.0)

W2002-06-21-17-34-16 - PPMAG4
 IRIG:1,UTC: 17:34:02.69 to 17:46:31.07, Dur: 749s
 TimeLngth: 748.38s, TimeInt: 29ms (34.1pps)
 TimeCor=-13.0s, DSPDif(mn,min,mx):29,28,404
 PPS(min,max,std): 23,36,2.26
 Prof: 2329 to 27843, NumProf(t/r): 25514/17069
 ProcTime/Recs: 17:34:02-17:42:23/0-17068
 MxACQtime: 33ms; DRate: 190.8KB/s; Flags: 0, 0, 0
 Pulse: 275ns, IFilt: 5.0MHz; ppPol: HH HV VV
 TxPol: HHVV, PRF: 20 10 20 10 kHz
 Range: Delay 75m, Spacing 15m, Gates 100
 Ave. Pulses: 84, Rng/Prof Aspect@90m/s: 5.7

	Min	Max	Mean	Std	Varc%
hhN(dB)	-68.26	-63.64	-66.16	-75.48	11.7
vvN(dB)	-67.32	-62.32	-65.48	-74.60	12.2
hhL(dB)	-13.09	-3.26	-6.54	-10.26	42.4
vvL(dB)	-8.72	-0.69	-2.64	-8.56	25.6
ppN(m/s)	-12.36	12.81	0.01	4.11	
ppT(m/s)	-97.67	101.21	0.08	32.47	
hh/vv(dB)	-NaN	37.74	17.30	29.84	1794
vh/hh(dB)	-NaN	-34.73	-37.73	-38.65	81.0
hv/vv(dB)	-NaN	-31.56	-60.05	-45.09	3130
hnjmp(dB)	-2.15	2.16	0.17	-8.35	14.1
vnjmp(dB)	-2.19	2.31	0.20	-8.27	14.2



IHOP 2002 (dual-antenna config, modes 1,3,4,7) Data (cal: 49.0,50.0)

W2002-06-21-17-34-16 - PPMAG4
 IRIG:1,UTC: 17:34:02.69 to 17:46:31.07, Dur: 749s
 TimeLngth: 748.38s, TimeInt: 29ms (34.1pps)
 TimeCor=-13.0s, DSPDif(mn,min,mx):29,28,404
 PPS(min,max,std): 23,36,2.26
 Prof: 2329 to 27843, NumProf(t/r): 25514/17069
 ProcTime/Recs: 17:34:02-17:42:23/0-17068
 MxACQtime: 33ms; DRate: 190.8KB/s; Flags: 0, 0, 0
 Pulse: 275ns, IFilt: 5.0MHz; ppPol: HH HV VV
 TxPol: HHVV, PRF: 20 10 20 10 kHz
 Range: Delay 75m, Spacing 15m, Gates 100
 Ave. Pulses: 84, Rng/Prof Aspect@90m/s: 5.7

	Min	Max	Mean	Std	Varc%
hhN(dB)	-68.26	-63.64	-66.16	-75.48	11.7
vvN(dB)	-67.32	-62.32	-65.48	-74.60	12.2
hhL(dB)	-13.09	-3.26	-6.54	-10.26	42.4
vvL(dB)	-8.72	-0.69	-2.64	-8.56	25.6
ppN(m/s)	-12.36	12.81	0.01	4.11	
ppT(m/s)	-97.67	101.21	0.08	32.47	
hh/vv(dB)	-NaN	37.74	17.30	29.84	1794
vh/hh(dB)	-NaN	-34.73	-37.73	-38.65	81.0
hv/vv(dB)	-NaN	-31.56	-60.05	-45.09	3130
hnjmp(dB)	-2.15	2.16	0.17	-8.35	14.1
vnjmp(dB)	-2.19	2.31	0.20	-8.27	14.2