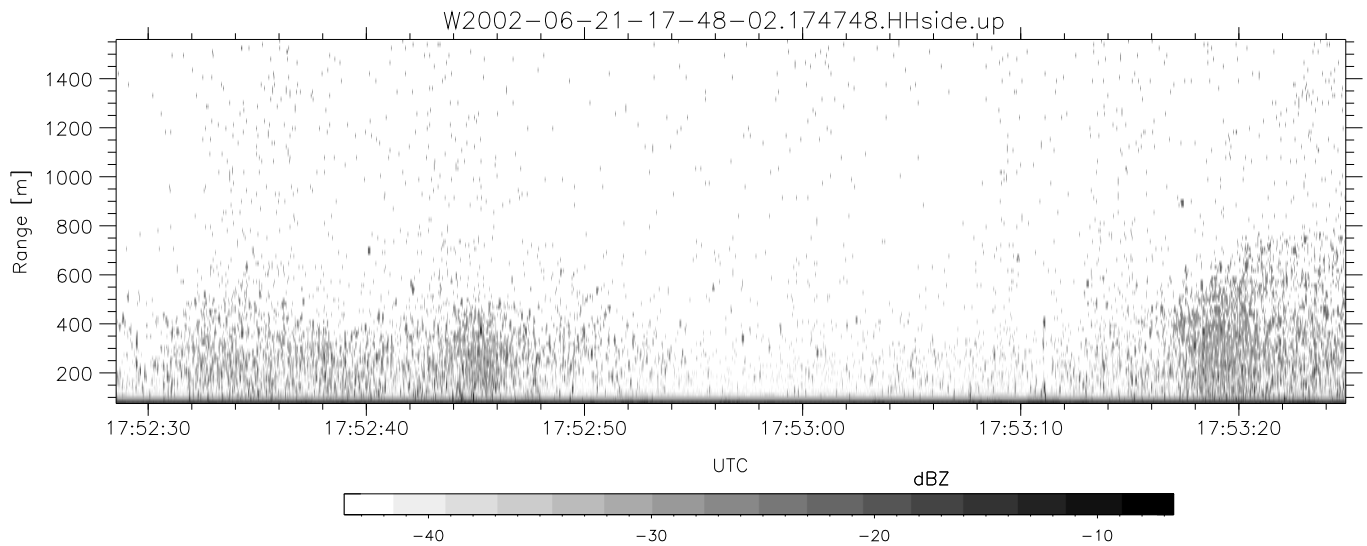
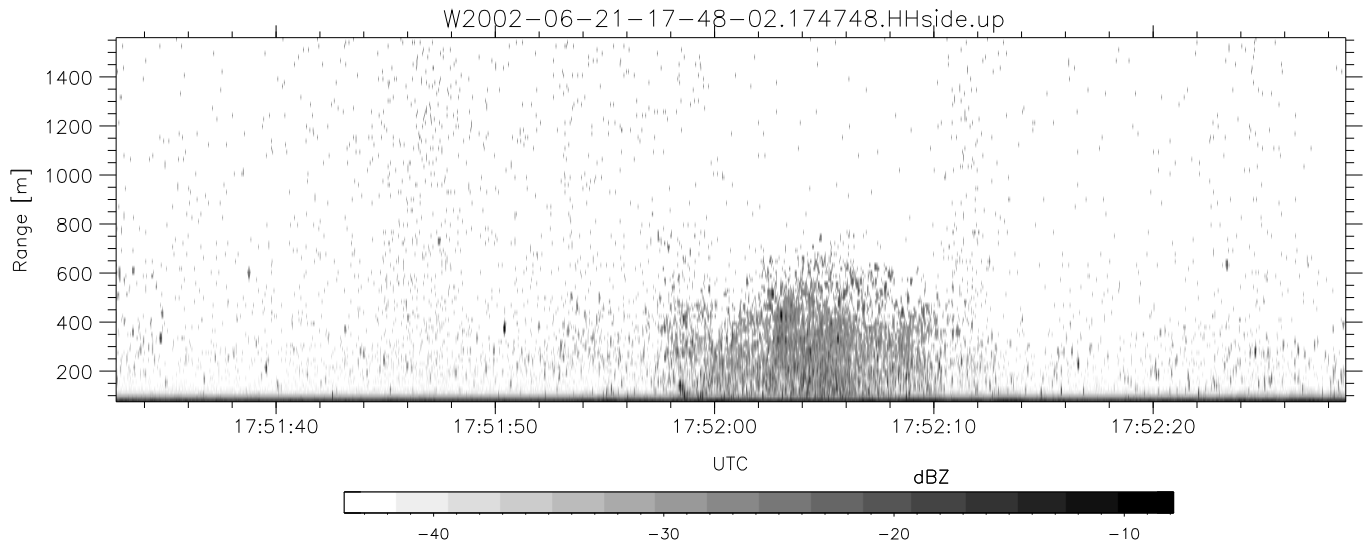
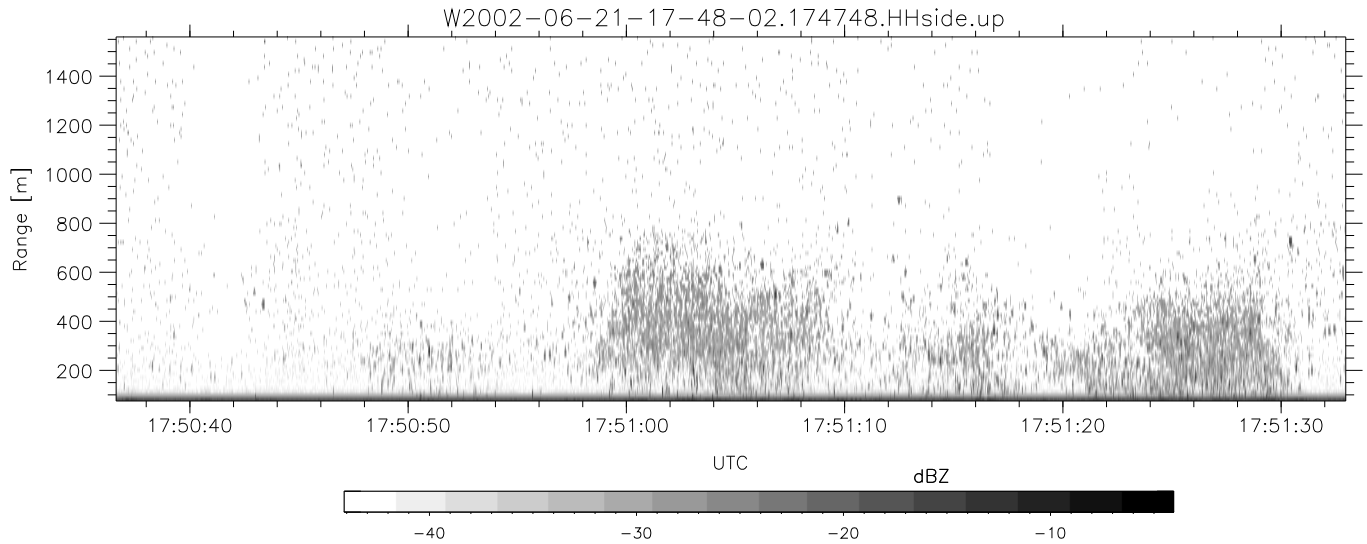


IHOP 2002 (dual-antenna config, modes 1,3,4,7) Data (cal: 49.0,50.0)

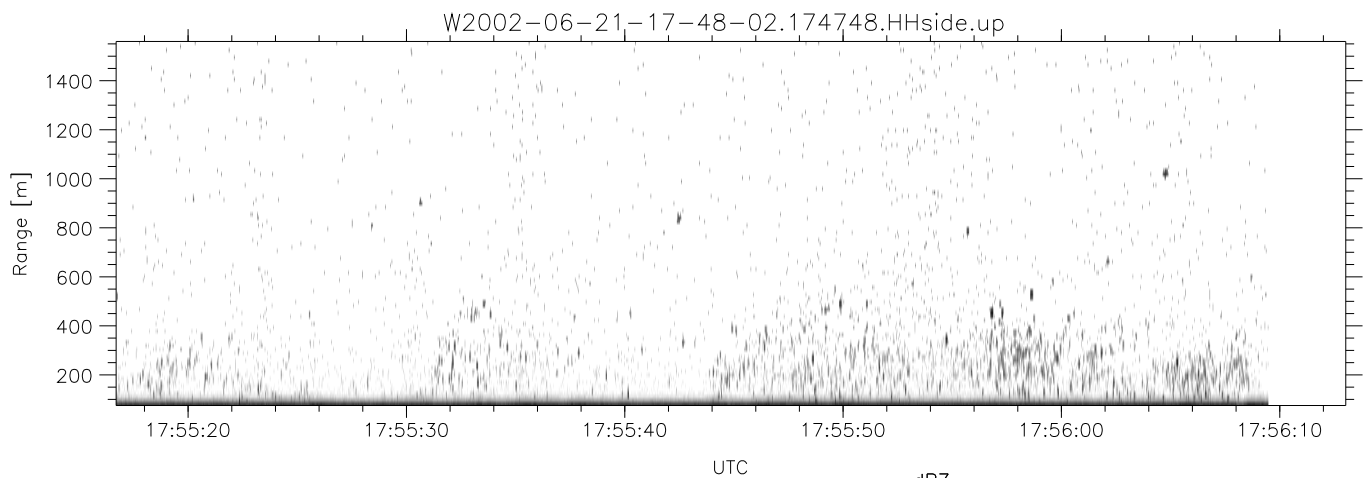
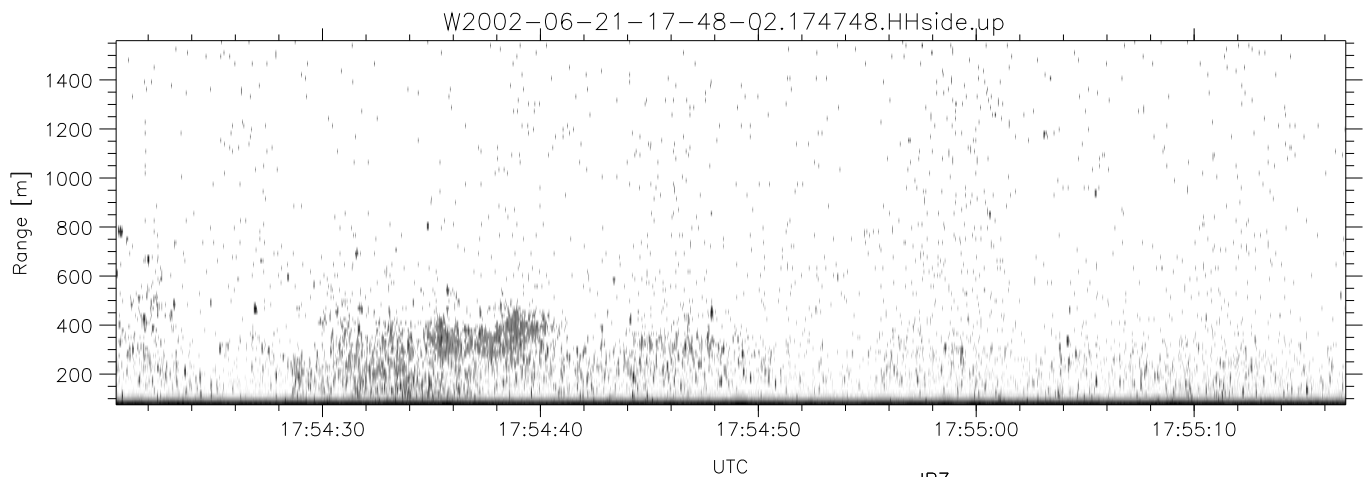
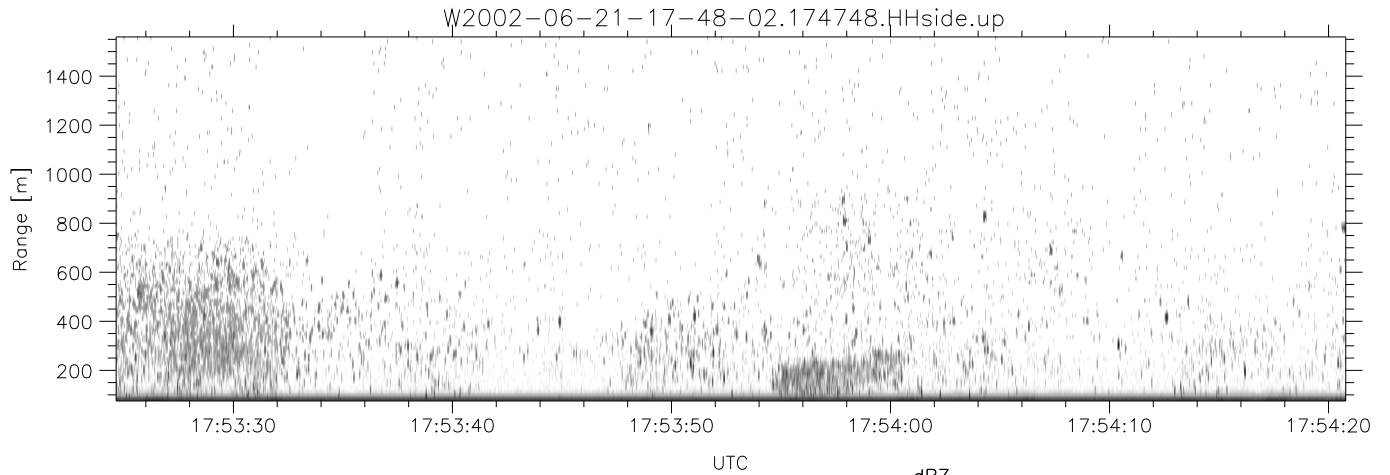
W2002-06-21-17-48-02 - PPMAG4
 IRIG:1,UTC: 17:47:48.81 to 17:59:54.10, Dur: 726s
 TimeLngth: 725.30s, TimeInt: 29ms (34.1pps)
 TimeCor=-13.0s, DSPDif(mn,min,mx):29,28,321
 PPS(min,max,std): 23,36,2.34
 Prof: 107 to 24836, NumProf(t/r): 24729/17069
 ProcTime/Recs: 17:47:48-17:56:09/0-17068
 MxACQtime: 33ms; DRate: 190.9KB/s; Flags: 0, 0, 0
 Pulse: 275ns, IFilt: 5.0MHz; ppPol: HH HV VV
 TxPol: HHVV, PRF: 20 10 20 10 kHz
 Range: Delay 75m, Spacing 15m, Gates 100
 Ave. Pulses: 84, Rng/Prof Aspect@90m/s: 5.7

	Min	Max	Mean	Std	Varc%
hhN(dB)	-68.35	-61.22	-66.58	-75.71	12.2
vvN(dB)	-67.47	-60.61	-65.56	-74.85	11.8
hhL(dB)	-11.29	-3.83	-6.31	-14.10	16.7
vvL(dB)	-10.49	-1.42	-4.97	-10.08	30.9
ppN(m/s)	-12.27	12.54	-0.04	4.09	
ppT(m/s)	-96.93	99.06	-0.33	32.33	
hh/vv(dB)	-NaN	46.53	14.08	35.17	1284
vh/hh(dB)	-NaN	-33.98	-39.39	-36.20	208.
hv/vv(dB)	-NaN	-28.28	-54.26	-45.65	725.
hnjmp(dB)	-3.60	2.84	0.18	-8.25	14.3
vnjmp(dB)	-2.66	2.47	0.18	-8.31	14.1



IHOP 2002 (dual-antenna config, modes 1,3,4,7) Data (cal: 49.0,50.0)

	Min	Max	Mean	Std	Varc%	
W2002-06-21-17-48-02 - PPMAG4						
IRIG:1,UTC: 17:47:48.81 to 17:59:54.10, Dur: 726s	hhN (dB)	-68.35	-61.22	-66.58	-75.71	12.2
TimeLngth: 725.30s, TimeInt: 29ms (34.1pps)	vvN (dB)	-67.47	-60.61	-65.56	-74.85	11.8
TimeCor=-13.0s, DSPDif(mn,min,mx):29,28,321	hhL (dB)	-11.29	-3.83	-6.31	-14.10	16.7
PPS(min,max,std): 23,36,2.34	vvL (dB)	-10.49	-1.42	-4.97	-10.08	30.9
Prof: 107 to 24836, NumProf(t/r): 24729/17069	ppN (m/s)	-12.27	12.54	-0.04	4.09	
ProcTime/Recs: 17:47:48-17:56:09/0-17068	ppT (m/s)	-96.93	99.06	-0.33	32.33	
MxACQtime: 33ms; DRate: 190.9KB/s; Flags: 0, 0, 0	hh/vv (dB)	-NaN	46.53	14.08	35.17	1284
Pulse: 275ns, IFfilt: 5.0MHz; ppPol: HH HV VV	vh/hh (dB)	-NaN	-33.98	-39.39	-36.20	208.
TxPol: HHVV, PRF: 20 10 20 10 kHz	hv/vv (dB)	-NaN	-28.28	-54.26	-45.65	725.
Range: Delay 75m, Spacing 15m, Gates 100	hn_jmp (dB)	-3.60	2.84	0.18	-8.25	14.3
Ave. Pulses: 84, Rng/Prof Aspect@90m/s: 5.7	vn_jmp (dB)	-2.66	2.47	0.18	-8.31	14.1



IHOP 2002 (dual-antenna config, modes 1,3,4,7) Data (cal: 49.0,50.0)

	Min	Max	Mean	Std	Varc%	
W2002-06-21-17-48-02 - PPMAG4						
IRIG:1,UTC: 17:47:48.81 to 17:59:54.10, Dur: 726s	hhN (dB)	-68.35	-61.22	-66.58	-75.71	12.2
TimeLngth: 725.30s, TimeInt: 29ms (34.1pps)	vvN (dB)	-67.47	-60.61	-65.56	-74.85	11.8
TimeCor=-13.0s, DSPDif(mn,min,mx):29,28,321	hhL (dB)	-11.29	-3.83	-6.31	-14.10	16.7
PPS(min,max,std): 23,36,2.34	vvL (dB)	-10.49	-1.42	-4.97	-10.08	30.9
Prof: 107 to 24836, NumProf(t/r): 24729/17069	ppN (m/s)	-12.27	12.54	-0.04	4.09	
ProcTime/Recs: 17:47:48-17:56:09/0-17068	ppT (m/s)	-96.93	99.06	-0.33	32.33	
MxAcQtime: 33ms; DRate: 190.9KB/s; Flags: 0, 0, 0	hh/vv (dB)	-NaN	46.53	14.08	35.17	1284
Pulse: 275ns, IFfilt: 5.0MHz; ppPol: HH HV VV	vh/hh (dB)	-NaN	-33.98	-39.39	-36.20	208.
TxPol: HHVV, PRF: 20 10 20 10 kHz	hv/vv (dB)	-NaN	-28.28	-54.26	-45.65	725.
Range: Delay 75m, Spacing 15m, Gates 100	hn_jmp (dB)	-3.60	2.84	0.18	-8.25	14.3
Ave. Pulses: 84, Rng/Prof Aspect@90m/s: 5.7	vn_jmp (dB)	-2.66	2.47	0.18	-8.31	14.1